

Technical drawing of a 4x15 cable. The drawing shows the cable's profile with dimensions: 4x 15 (30.5) for the overall dimensions and 2x 14 (28.7) for the inner dimensions. A cross-section view on the right shows the internal structure of the cable, with a legend indicating 4x 13 (0.91 to .03).

[illegible]

UNLESS OTHERWISE SPECIFIED AND/OR INDICATED:

DIMENSIONS ARE TO FACE OF VIEW SURF AND ARE AUTOMATICALLY ROUNDED BY COMPUTER FOR INSPECTION. USE WITH MODEL FOR PRECISE DIMENSIONS. FOR ALL OTHER DIMENSIONS NOT SHOWN SEE DRAWING OF THE BUILD, USE WITH MODEL FOR PRECISE TOOL PATH DATA.

REFERENCE WATTING COMPONENTS OR EQUIVALENT:

CONNECTOR ASSEMBLIES SHOWN ON PART 13300639 AND 13331419

THIS PART ACCEPTS THE FOLLOWING COMPONENTS OR EQUIVALENT:

CONNECTOR ASSEMBLIES SHOWN ON PART 13311168 & 13331414

FOR DEVICE CASE MOUNT CONFIGURATION REQUIREMENTS:

SEE PART 15016237

CAUTION: THE HEADER IN THIS ASSEMBLY IS A MODULAR COMPONENT USED IN MULTIPLE ASSEMBLIES. THE HEADER COMPONENT IS ALSO AVAILABLE IN VO MATERIAL. HEADER COMPONENTS ARE AVAILABLE IN TWO HEADERS WITHIN THIS FAMILY ARE USED. SEE ASSEMBLY 5020230 AND PART 1561786 FOR SHARED INDEXING.

THIS PRODUCT IS NOT DESIGNED FOR AN APPEARANCE ITEM, SINCE IMPERFECTIONS INCLUDING, BUT NOT LIMITED TO, FLOW MARKS, COAT BLEMISHES, GATE VESTIGES, AND SOFT FLIGHT DO NOT AFFECT THE FIT, FORM, OR FUNCTION OF THE PART. ARE PERMISSIBLE PER ASQP-A-3.2.5.5.01-EN.

RECOMMENDED FASTENER TIGHTENING TORQUE IS 25 ± 5% OVER TORQUE TESTING AND TORQUE TO FAILURE MUST BE PERFORMED BY DEVICE CASE OR TIER ONE SUPPLIER.

THIS ASSEMBLY MUST BE LEAK TESTED PER ES-A-755.

SEAL MAY BECOME DISLOADED DURING SHIPPING AND HANDLING. BEFORE ATTACHING TO THE MATING DEVICE OR COVER, THE OPERATOR MUST MAKE SURE THE SEAL IS INTACT AND PROPERLY ASSOCIATED WITH THE MATING PART.

HARNESS MANUFACTURER IS RESPONSIBLE FOR VALIDATING THE CONNECTION AS APPLIED ON CABLE TO THE REQUIREMENT OF SPECIFIC APPLICATION.

CONNECTOR DESIGNS PROVIDE THE FOLLOWING MINIMUM CREEPAGE DISTANCE WHEN USED AS A PLASTIC DOWEL OR SHIPPING CONTAINER MUST BE LINED WITH PLASTIC LINER. CONNECTOR PRINTS THAT WILL BE ASSEMBLED INTO THIS HEADER FOR DISTANCES:

ELECTRIC VEHICLE CHARGING AND OTHER HIGH DUTY CYCLE APPLICATIONS CARRYING ≥ 25A REQUIRE THE FOLLOWING

- MIN 5.0" MIN. OF COPPER CONDUCTORS
- TERMINAL TO CONDUCTOR INTERFERENCE DISTANCES ≥ 0.2 MILLIONS.
- MIN 5.0" MIN. OF COPPER CONDUCTORS
- TERMINAL TEMPERATURES NEED TO BE MEASURED IN THE VEHICLE APPLICATION TO INSURE T-RISE OVER AMBIENT IS ≤ 25 °C AT MAXIMUM CONTINUOUS CURRENT.

PARTS MUST BE PACKAGED IN COMPARTMENTAL CONTAINERS OR TRAYS AND BE PACKED IN A PLASTIC DOWEL OR SHIPPING CONTAINER MUST BE LINED WITH PLASTIC LINERS, GAO OR LINERS MUST BE SEALED TO AVOID FOREIGN MATTER.

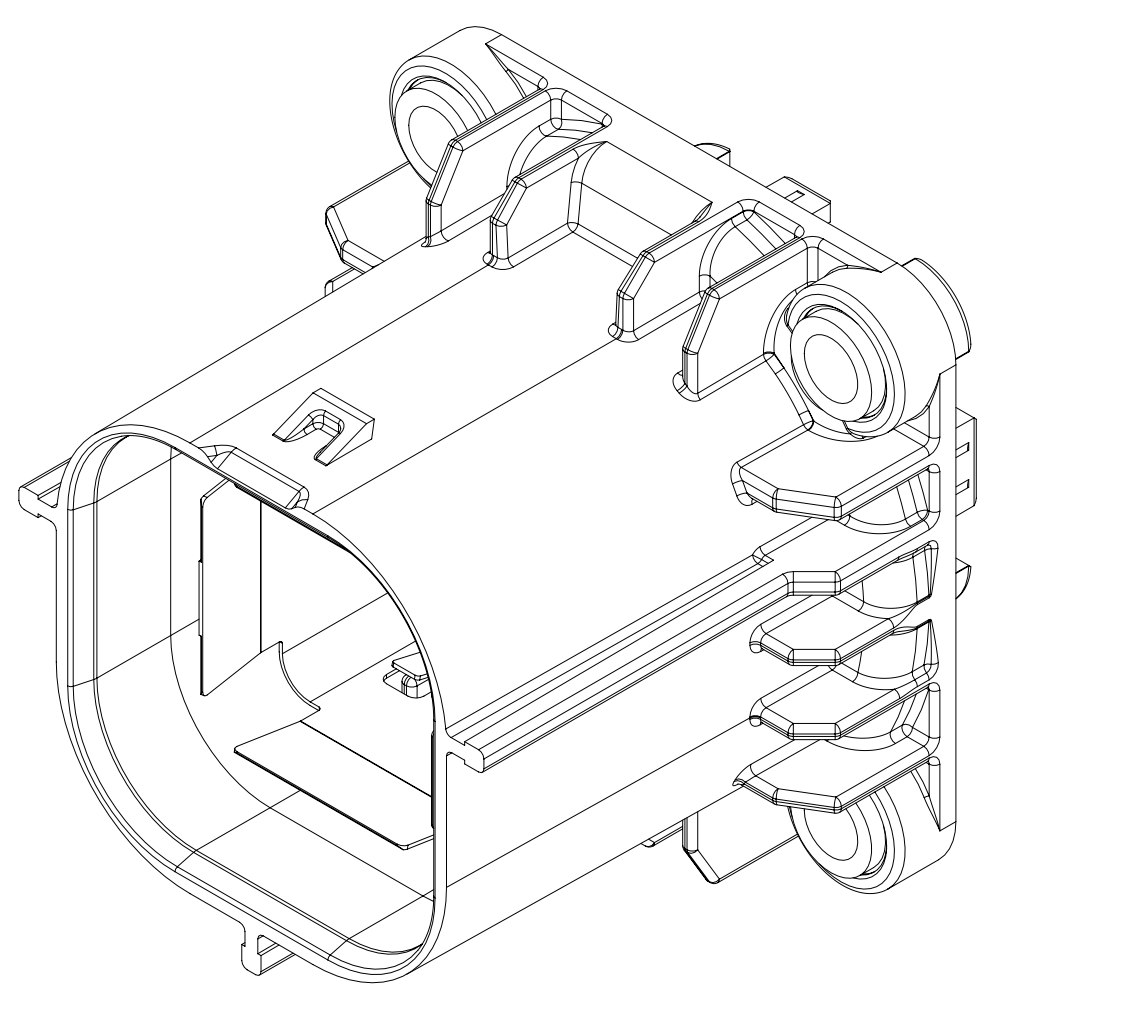
PARTS MUST BE FREE OF DUST, CARBON FIBER, LOOSE METAL SILVERS OR ANY PARTICULATE THAT MAY CAUSE FIT OR FUNCTION CONCERNS.

REFERENCE NUMBER 13357959 FOR ASSEMBLY/DISASSEMBLY INFORMATION.

CONNECTED WITH THE MATING DEVICE OR COVER. THE CONNECTOR ASSEMBLIES MUST WITHSTAND AN ELECTRICAL HI-POT TEST OF 3000 VOLTS FOR 10 SECONDS BETWEEN THE MATE TERMINALS AND SHIELD.

WARRANTY MUST BE APPLIED TO EVERY PART OF THE SEALING SURFACE. DRY-FILM APPLICATION MUST BE INSPECTED PER THE MEASUREMENT METHOD DEFINED IN THE CONTROL PLAN AND APPROVED BY THE PRODUCT ENGINEERING PORTFOLIO 2 Manager.

ALL LISTED ASSEMBLIES VALIDATED TO SAE/ASQC-A-2 REG. 331-2012; SAE/ASQC-A-2 REG. 331-2012



SYMBOL DEFINITION		
<p>2. DIMENSION WITHOUT AN INSPECTION REPORT SYMBOL DOES NOT REQUIRE INSPECTION. IT MAY BE CONTROLLED ON THE INDIVIDUAL COMPONENT DRAWING.</p>	<p>TOTAL NO. OF INSPECTIONS REQUIRED</p>	<p>55</p>
	<p>LAST NO. USED</p>	<p>35</p>

DATE	TIME	ZONE	REVISION HISTORY	Auth	Rev	APPROV
080619	R 01	-	RELEASED PART DRAWING	4355868	RAD	AAJ
16.10.19	R 02	-	3330632 - UPDATED PART ACCEPTANCE	440192	LWD	JAA
090C18	R 03	-	ALL PARTS - (0.9) WAS 0.9 10.2 & MPEC ON SEALING SURFACE AREA VALIDATION DATA NOTES, DRY FILM COLUMN INFO TO PART & C/H 4.5 AND REMOVED 350.34197 FROM PART ACCEPTANCE NOTE 3330633 - UPDATED PART AVAILABILITY	441208	LWD	JAA
150D18	R 04	-	ALL PARTS - ADDED "LOT IN SHIELD POSITION ACCEPTANCE" LABEL	441606	LWD	JAA
150E19	R 05	-	ALL PARTS - UPDATED ISOMETRIC VIEW	442399	ALL	JAA
27AU19	R 06	-	ALL PARTS - UPDATED VALIDATION DATA NOTE	443130	JOH	JAA

[illegible]

3330937

Mouser Electronics

Authorized Distributor

Click to View Pricing, Inventory, Delivery & Lifecycle Information:

[Aptiv:](#)
[33300633](#)