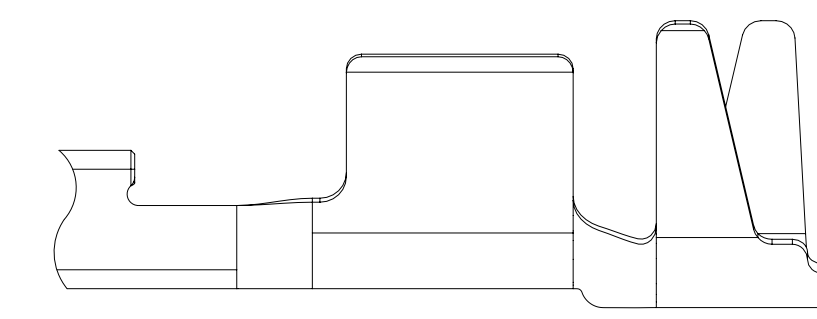
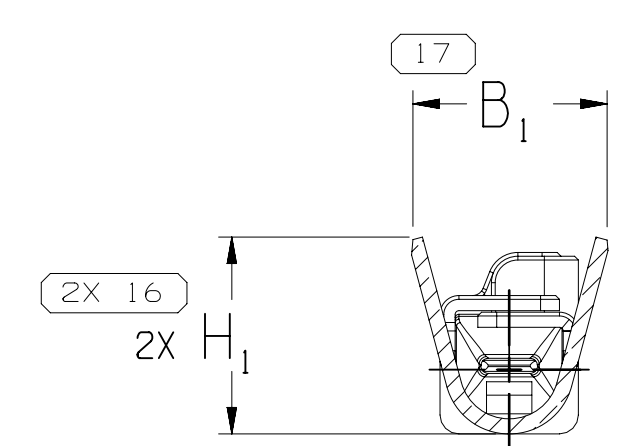
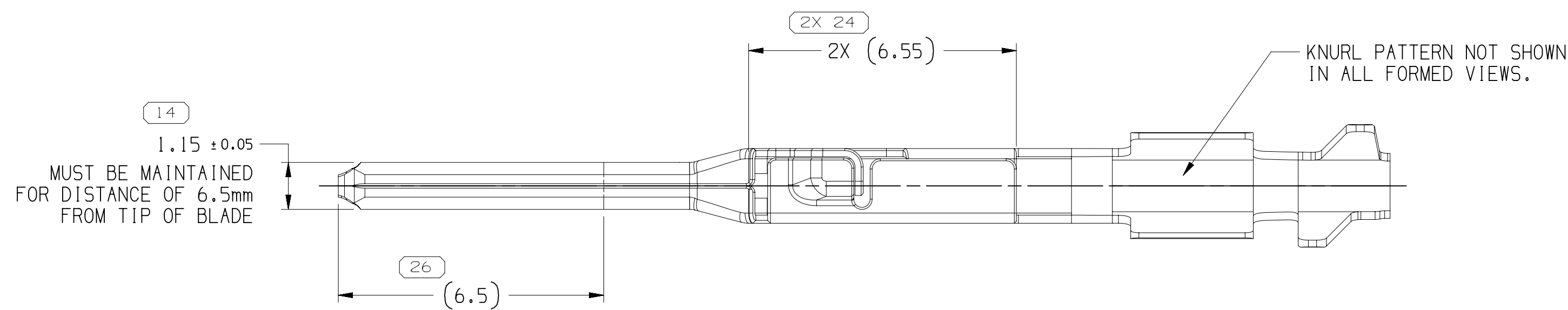


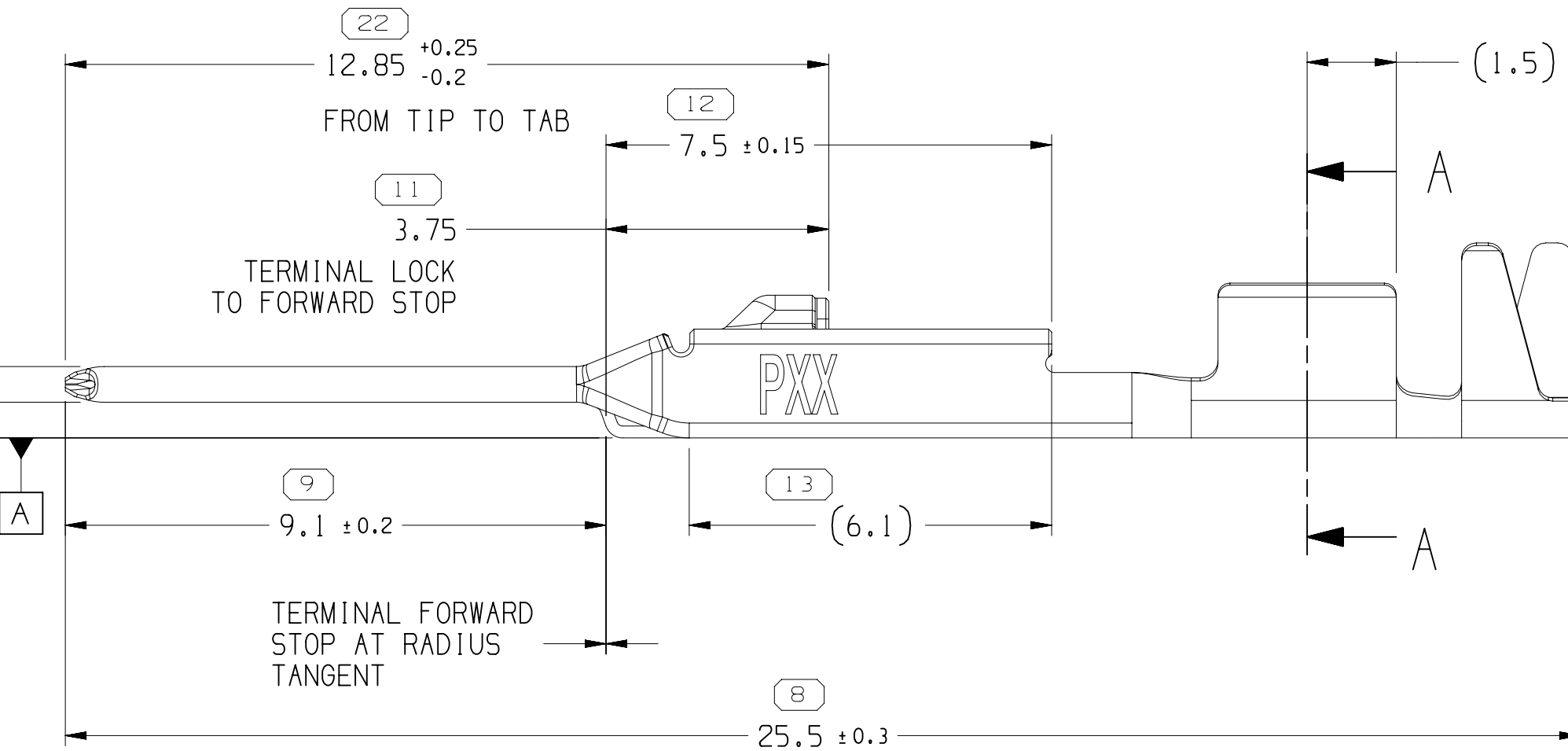
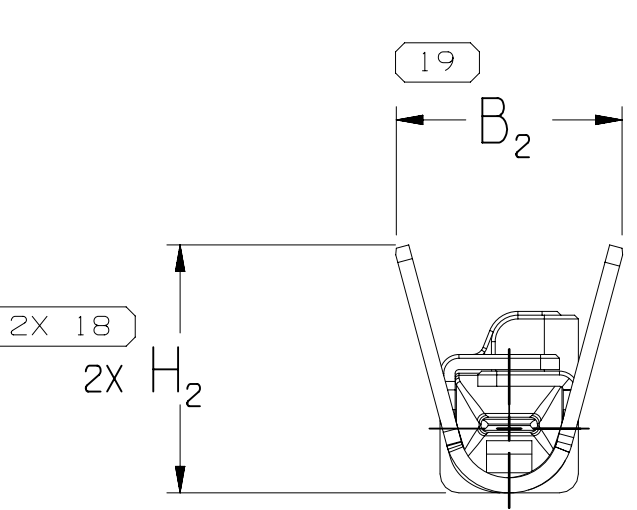
TERMINAL, CABLE ALIGNMENT & POSITION



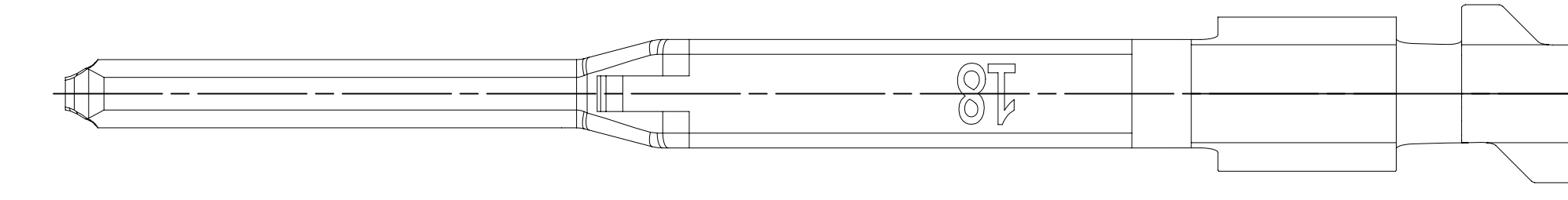
TYPE 102 SAME AS TYPE 101 EXCEPT AS SHOWN



SECTION A-A



TYPE 101



NOTES

- UNLESS OTHERWISE SPECIFIED AND/OR INDICATED:
 - DIMENSIONS ARE TO FACE OF VIEW SHOWN AND AUTOMATICALLY ROUNDED BY COMPUTER FOR INSPECTION (SEE MATH MODEL FOR PRECISE DIMENSIONS). FOR ALL OTHER DIMENSIONS NOT SHOWN BUT REQUIRED FOR TOOL BUILD, SEE MATH MODEL FOR PRECISE TOOL PATH DATA.
 - FOR TYPE 101 WITH CABLE SIZES UP TO 1.9mm O.D.; MAXIMUM INSULATION CRIMP WIDTH OF 1.9mm AND HEIGHT 1.9mm; MAXIMUM CORE CRIMP WIDTH IS 1.9mm.
 - FOR TYPE 101 WITH CABLE SIZES GREATER THAN 1.9mm BUT LESS THAN 2.34mm O.D.; MAXIMUM INSULATION CRIMP WIDTH OF 2.25mm AND HEIGHT 2.35mm; MAXIMUM CORE CRIMP WIDTH IS 1.9mm
 - FOR TYPE 102 WITH CABLE SIZES UP TO 2.4mm O.D.; MAXIMUM INSULATION CRIMP WIDTH OF 2.6mm AND HEIGHT 2.6mm; MAXIMUM CORE CRIMP WIDTH IS 1.9mm
 - PLATING TYPE:
 - REFLOW TIN 1.9 - 3.3 MICROMETERS THICK OVER NICKEL UNDERPLATE 0.13 - 0.5 MICROMETERS THICK.
 - SILVER 1.0 - 2.0 MICROMETERS THICK OVER NICKEL UNDERPLATE 0.127 - 0.254 MICROMETERS THICK.
 - MATTE TIN 1.9 - 7.0 MICROMETERS THICK OVER NICKEL UNDERPLATE 0.127 - 0.254 MICROMETERS THICK. (FOR USE WITH SELECTIVE SILVER PLATING SPECIFICATION)
- MAXIMUM CURRENT CAPACITY AS DEFINED BY USCAR-2 R6 SECTION 5.3.3 IS 16.5 AMPS WITH 1.5mm² COPPER CABLE.
- * DENOTES DIMENSIONS MADE AT CUT-OFF AND CRIMP DIE
- REFERENCE MATING COMPONENTS OR EQUIVALENTS: TERMINAL 35072409
- PARTS MEET THE PERFORMANCE REQUIREMENTS OF 6MW3191 JUNE 2012 AND SAE/USCAR-2 R6 REVISION FOR THE FOLLOWING CLASSIFICATIONS:
 - TEMPERATURE CLASS 3 (-40° TO 125° C)
 - VIBRATION CLASS 1 (ON BODY OR CHASSIS)
 - SEALING CLASS 1 (UNSEALED) FOR CABLE I.D. 25 & 15
 - SEALING CLASS 2 OR 3 (SEALED CONNECTOR DEPENDENT) FOR CABLE I.D. 21 & 18
- FOR TERMINALS PACKAGED & STORED IN THE APPROVED MANNER, TARNISH ON SILVER PLATED SURFACES WILL NOT AFFECT THE PERFORMANCE OF THE PART.
- 15 CABLE I.D. P/N IS NOT APPROVED FOR USE IN SUMITOMO CONNECTOR HOUSINGS - THE TERMINAL-CONNECTOR POLARIZATION FEATURE IN THE CONNECTOR CAVITY DOES NOT MEET REQUIREMENTS.

PLATING TYPE INFORMATION SHOWN ABOVE IS REFERENCE ONLY.
PLATING REQUIREMENTS ARE CONTAINED IN APPLICABLE MATERIAL SPECIFICATION.

| PART NO | REV | N/P | CABLE I.D. STATUS | TYPE | MAT'L SPEC | MAT'L SIZE | CONTACT AREA PLATING TYPE (SEE NOTE #3) | CRIMP AREA PLATING TYPE (SEE NOTE #3) | CONTACT PLATING I.D. | CABLE I.D. | CABLE SIZE (mm ²) | CABLE DIAMETER | B ₁ ±0.15 | B ₂ ±0.25 | B ₄ | (H ₁) | (H ₂) |
|----------|-----|-----|-------------------|------|----------------------------|------------|---|---------------------------------------|----------------------|------------|-------------------------------|----------------|----------------------|----------------------|----------------|-------------------|-------------------|
| 35267295 | 01 | AC | - | 101 | TIN PLATED COPPER ALLOY | 0.2 X 29.5 | I | I | SN | 21 | 0.35 - 0.5 | 1.2 - 1.83 | 2.1 | 2.85 | 1.88 | 2.05 | 3.15 |
| 35267294 | 01 | AC | - | 101 | TIN PLATED COPPER ALLOY | 0.2 X 29.5 | I | I | SN | 18 | 0.75 - 1.0 | 1.7 - 2.34 | 2.6 | 3 | 1.88 | 2.6 | 3.3 |
| 35267293 | 01 | AC | SEE NOTE #9 | 102 | TIN PLATED COPPER ALLOY | 0.2 X 29.5 | I | I | SN | 15 | 1.25 - 1.5 | 1.8 - 2.4 | 3.1 | 3.9 | 2.2 | 3.1 | 3.8 |
| 35271146 | 01 | AC | - | 101 | SILVER PLATED COPPER ALLOY | 0.2 X 29.5 | II | III | AG | 21 | 0.35 - 0.5 | 1.2 - 1.83 | 2.1 | 2.85 | 1.88 | 2.05 | 3.15 |
| 35271145 | 01 | AC | - | 101 | SILVER PLATED COPPER ALLOY | 0.2 X 29.5 | II | III | AG | 18 | 0.75 - 1.0 | 1.7 - 2.34 | 2.6 | 3 | 1.88 | 2.6 | 3.3 |
| 35271144 | 01 | AC | SEE NOTE #9 | 102 | SILVER PLATED COPPER ALLOY | 0.2 X 29.5 | II | III | AG | 15 | 1.25 - 1.5 | 1.8 - 2.4 | 3.1 | 3.9 | 2.2 | 3.1 | 3.8 |

| | | | |
|--|----|-----------------------------|--|
| 5 | | PROCESS SENSITIVE DIMENSION | |
| DIMENSIONS ENCLOSED IN () INDICATE REFERENCE DIMENSIONS AND NO TOLERANCE LIMITS ARE ESTABLISHED | | | |
| DIMENSIONAL RANGE (MM) | | CHART D | |
| FROM | 0 | > 12 | |
| TO | 12 | | |
| TOLERANCE UNLESS OTHERWISE SPECIFIED | | | |
| ±0.1 | | ±0.2 | |
| ANGULAR TOLERANCE | | ±2° | |

Mouser Electronics

Authorized Distributor

Click to View Pricing, Inventory, Delivery & Lifecycle Information:

[Aptiv:](#)

[35267295](#)