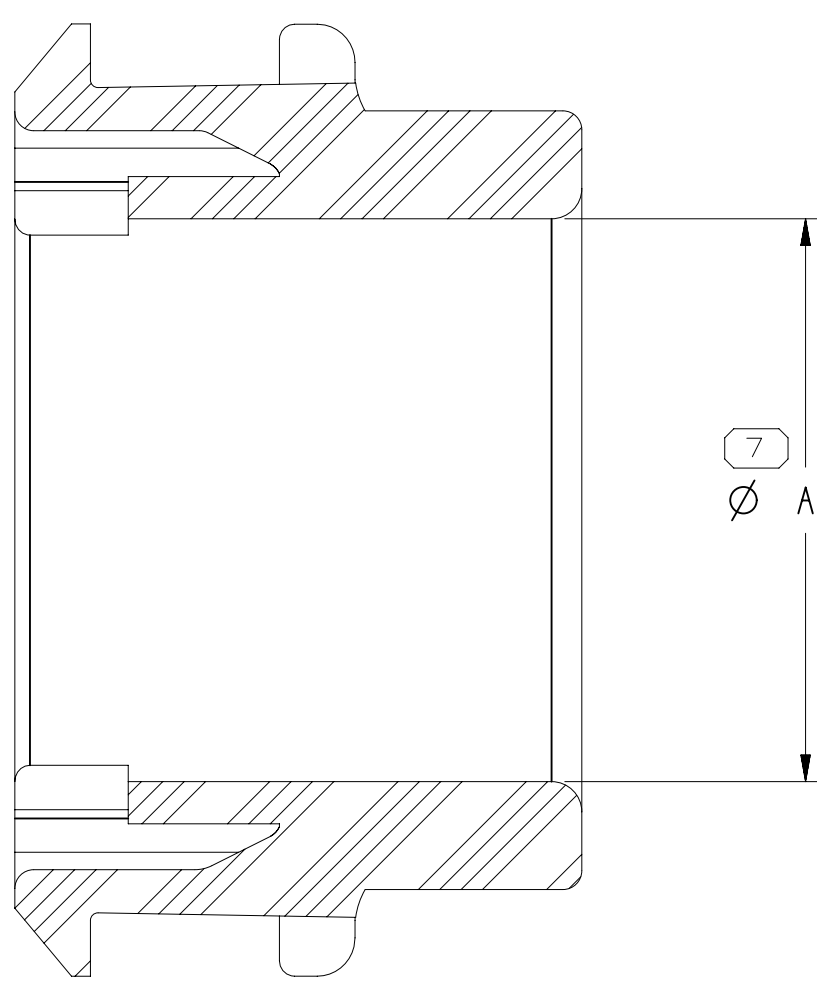
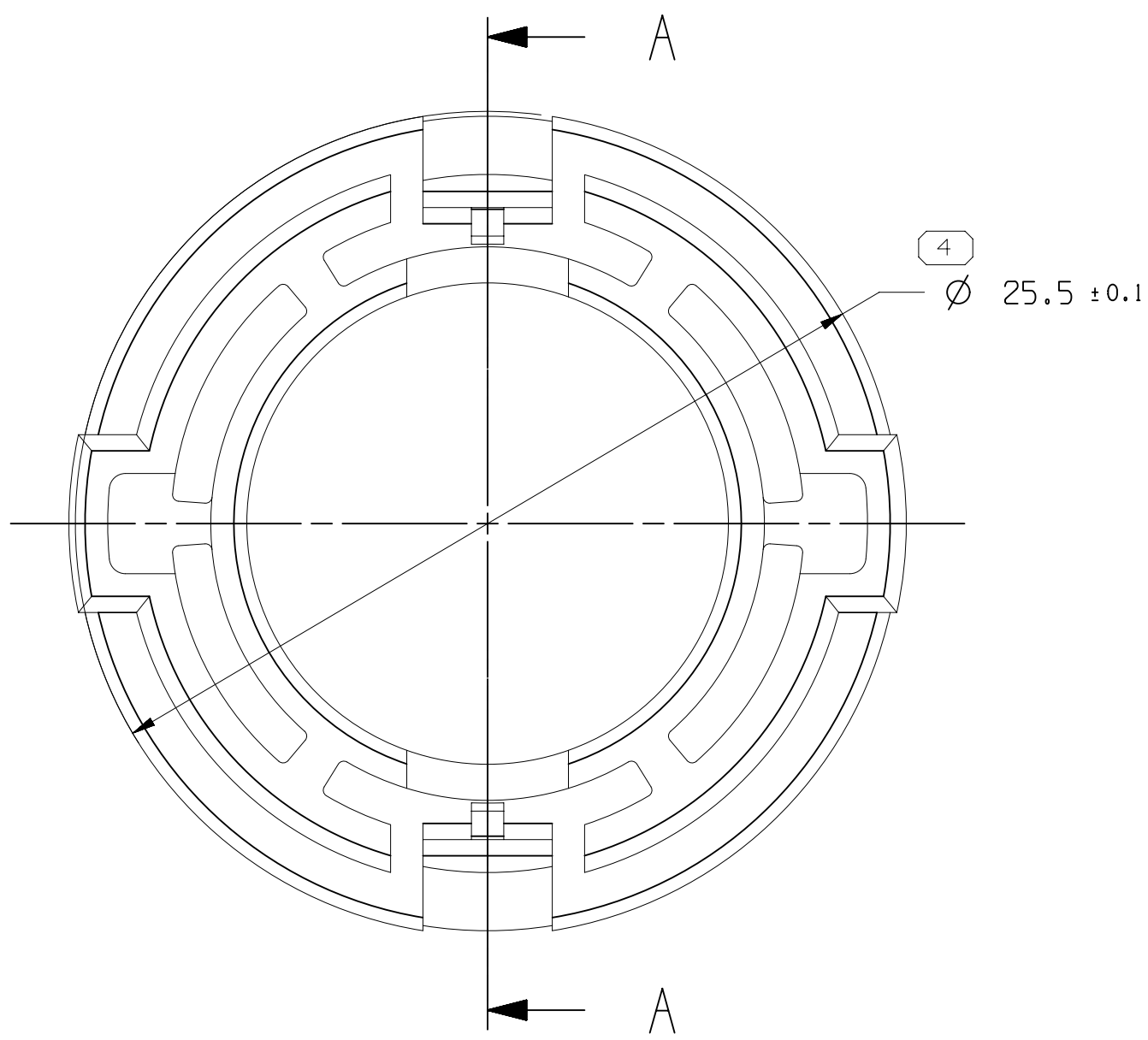
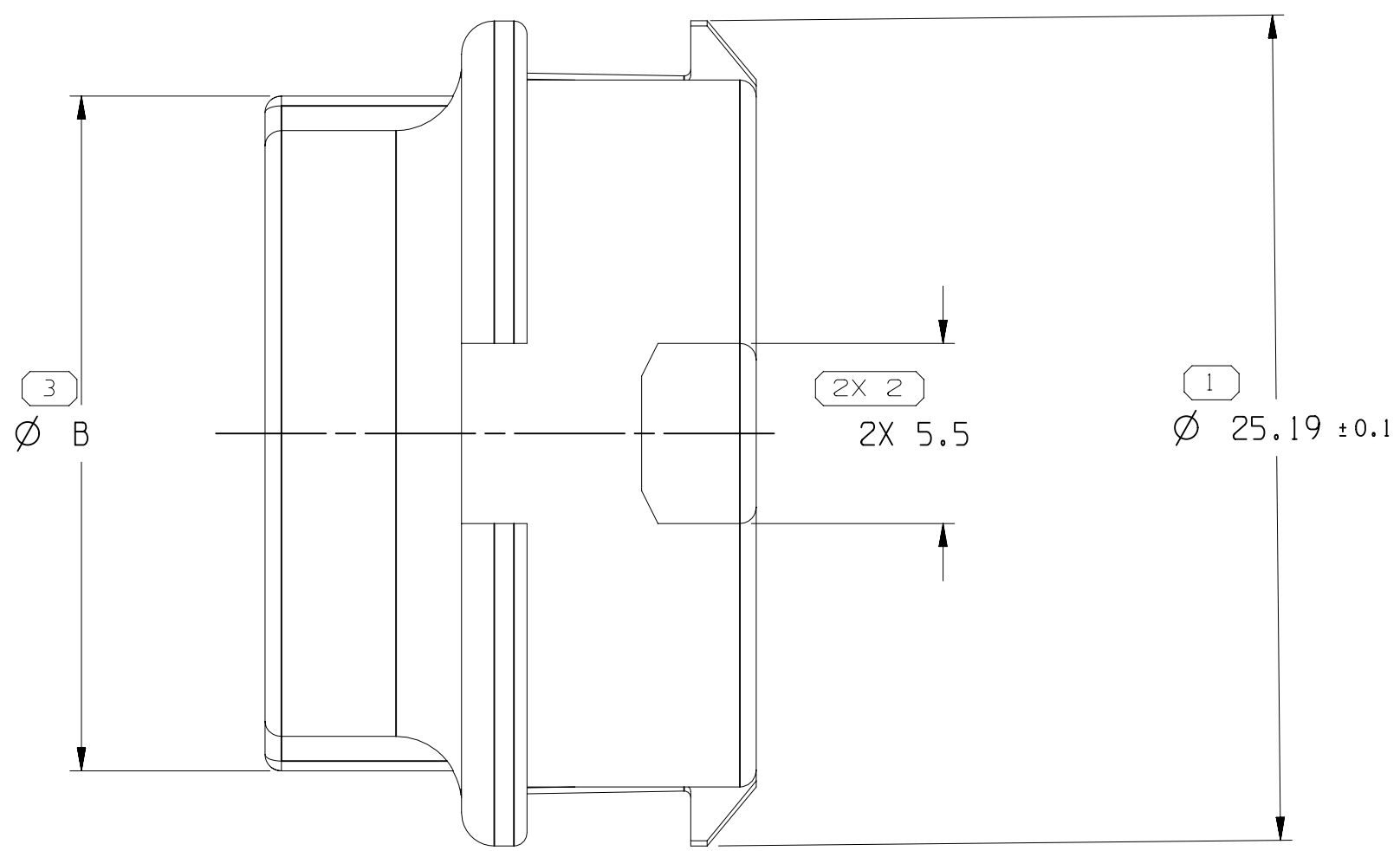
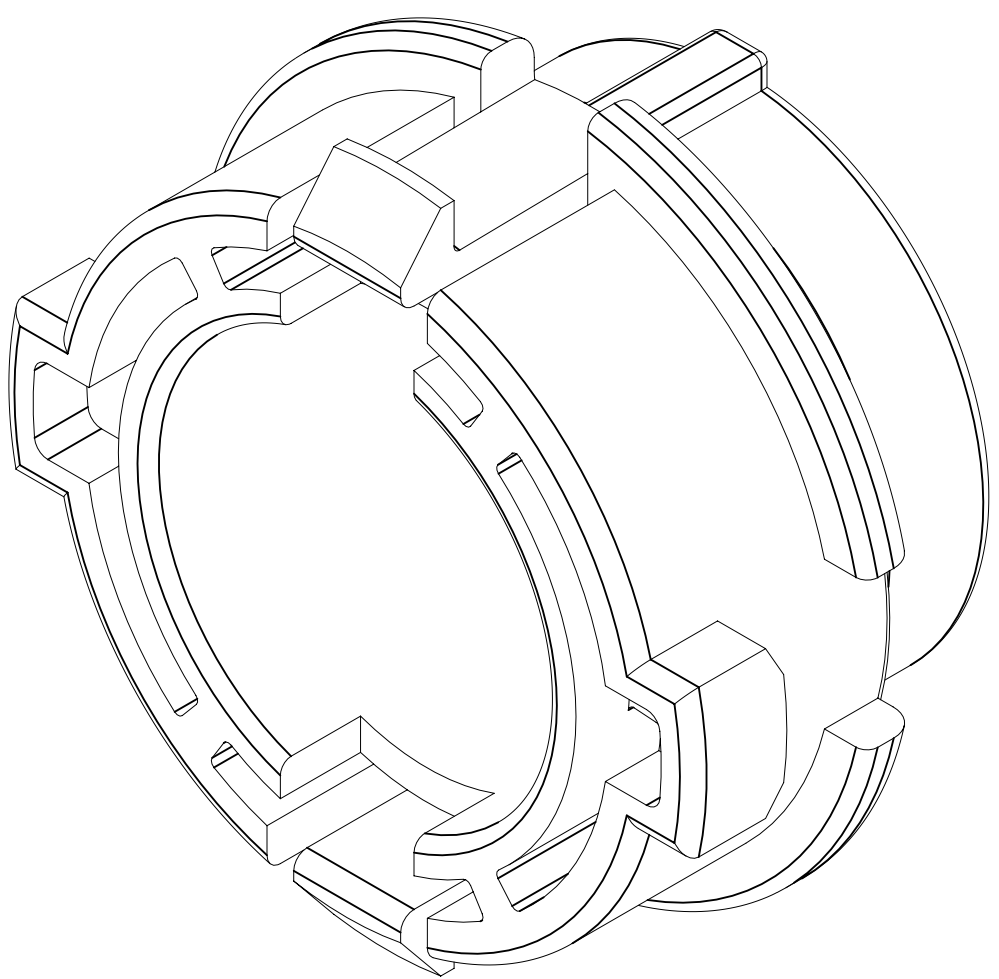
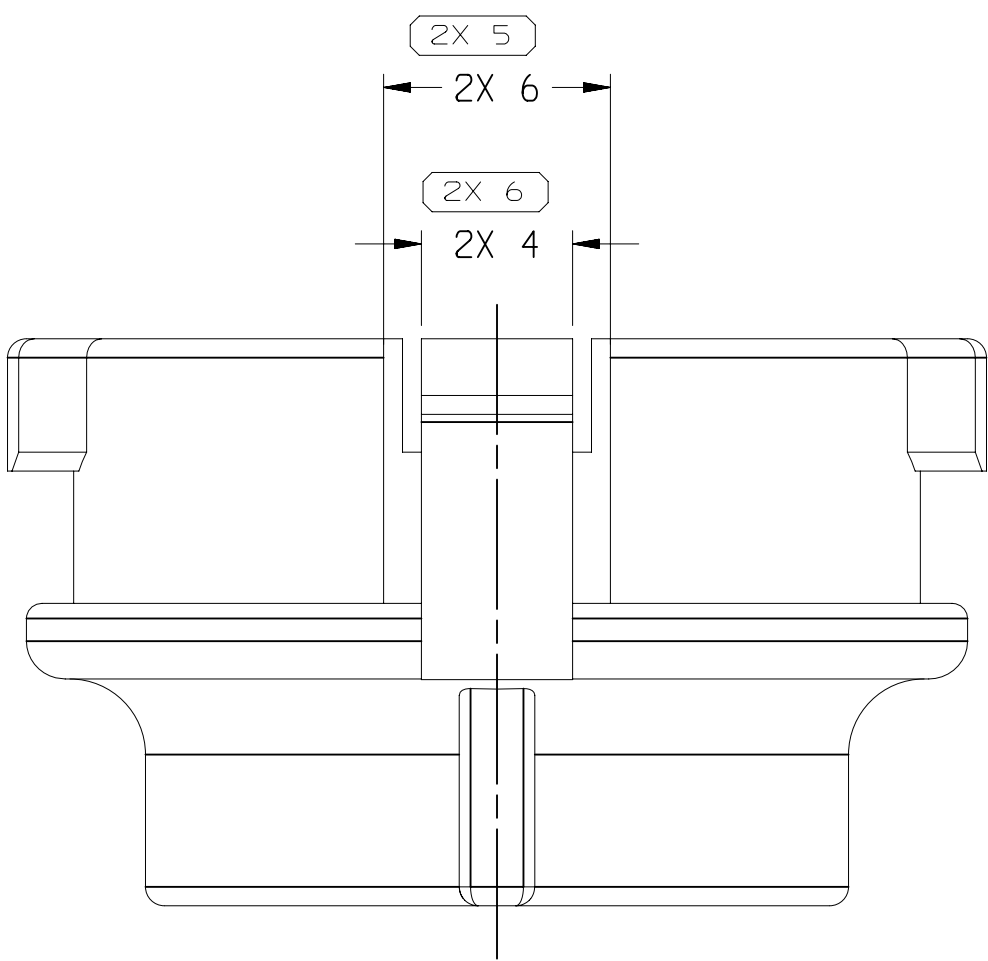


SYMBOL DEFINITION				MISSING SYMBOLS				DWG STATUS				ZONE		REVISION HISTORY				AUTH		DR		APVD/REV																	
								DATE				STG		REV		N/P		CHG						1		2													
A DIMENSION WITHOUT AN INSPECTION REPORT SYMBOL DOES NOT REQUIRE INSPECTION. IT MAY BE CONTROLLED ON THE INDIVIDUAL COMPONENT DRAWING.				TOTAL NO OF INSPECTIONS REQUIRED				10				NO MISSING SYMBOL NUMBER				12AU15				R		01		-		-		CREATED PART DRAWING				413313		ZLT		HSH		JHJ	



SECTION A - A



NOTES

- UNLESS OTHERWISE SPECIFIED AND/OR INDICATED:
DIMENSIONS ARE TO FACE OF VIEW SHOWN AND
AUTOMATICALLY ROUNDED BY COMPUTER FOR INSPECTION
(SEE MATH MODEL FOR PRECISE DIMENSIONS). FOR ALL
OTHER DIMENSIONS NOT SHOWN BUT REQUIRED FOR TOOL
BUILD, SEE MATH MODEL FOR PRECISE TOOL PATH DATA.
- MATERIAL RECYCLING CODE PER ISO 11469. (11X10.1) CHARACTERS
AS SHOWN TO BE LOCATED ON ANY EXTERIOR SURFACE.
- (11X10.1) DELPHI CORPORATE BRAND TO BE LOCATED ON ANY
EXTERIOR SURFACE, PREFERABLY VISIBLE AT FINAL ASSEMBLY.
OPTIONAL CONSTRUCTION FOR EXISTING TOOLING MAY BE "PED".
- THIS PART USED IN ASSEMBLIES UTILIZING HIGH VOLTAGE
PASSTHROUGH CONNECTOR AND HV SHIELDED CABLE PER
COROPLAST LV216-2 TABLE A.2

PART NO	REV	N/P	STATUS	MATERIAL SPECIFICATION AND COLOR	VOLUME CM³	CABLE SIZE MM²	CABLE O.D. MM²	A±0.1	B±0.1
33112613	01	-	-	POLYAMIDE BRN	1.649	50	15.8 +0/-0.6	16.2	21.0
13894241	01	-	-	POLYAMIDE ORN	2.151	35	14.4 +0/-0.6	14.9	20.6
13888023	01	-	-	POLYAMIDE NAT	2.834	25	12.2 +0/-0.6	12.7	20.6

5		PROCESS SENSITIVE DIMENSION	
DIMENSIONS ENCLOSED IN [] INDICATE REFERENCE DIMENSIONING AND NO TOLERANCE LIMITS ARE ESTABLISHED		CHART	
FROM	TO	1	2
0	20	30	70
20	30	70	100
30	70	100	150
70	100	150	200
100	150	200	250
150	200	250	300
200	250	300	400
TOLERANCE (UNLESS OTHERWISE SPECIFIED)		±1	±1.2
ANGULAR TOLERANCE		±2°	

THIRD ANGLE PROJECTION		DO NOT SCALE	
USE MATH DATA		NX	
REFERENCE			

APTIV		CONNECTION SYSTEMS	
Ankang, China		COPYRIGHT 2015 APTIV. ALL RIGHTS RESERVED.	
THIS DRAWING IS THE PROPERTY OF APTIV AND CONTAINS APTIV CONFIDENTIAL INFORMATION. THE REPRODUCTION, DISTRIBUTION AND UTILIZATION OF THIS DOCUMENT OR ITS RELATED CAD DATA, AS WELL AS COMMUNICATION OF ANY CONTENT TO OTHERS, WITHOUT EXPRESS AUTHORIZATION, IS PROHIBITED.			
DR		DATE	
APVD1 LITONG ZHANG		12AU15	
APVD2 SUIBIN HUANG		12AU15	
APVD3 HUAJUN JIN		12AU15	
APVD4			
SUBSTANCES OF CONCERN AND RECYCLED CONTENT PER APTIV 10949001			
MATERIAL SEC CHART			
DRAWING NAME		TAXI LOCK TPA/SEAL	
DRAWING NUMBER		13894242	
SIZE		SCALE	
A0		5:1	
FRAME NO		SHEET NO	
1		1 OF 1	
STG		REV	
R		01	
N/P		AB	

Mouser Electronics

Authorized Distributor

Click to View Pricing, Inventory, Delivery & Lifecycle Information:

[Aptiv:](#)
[13888023](#)