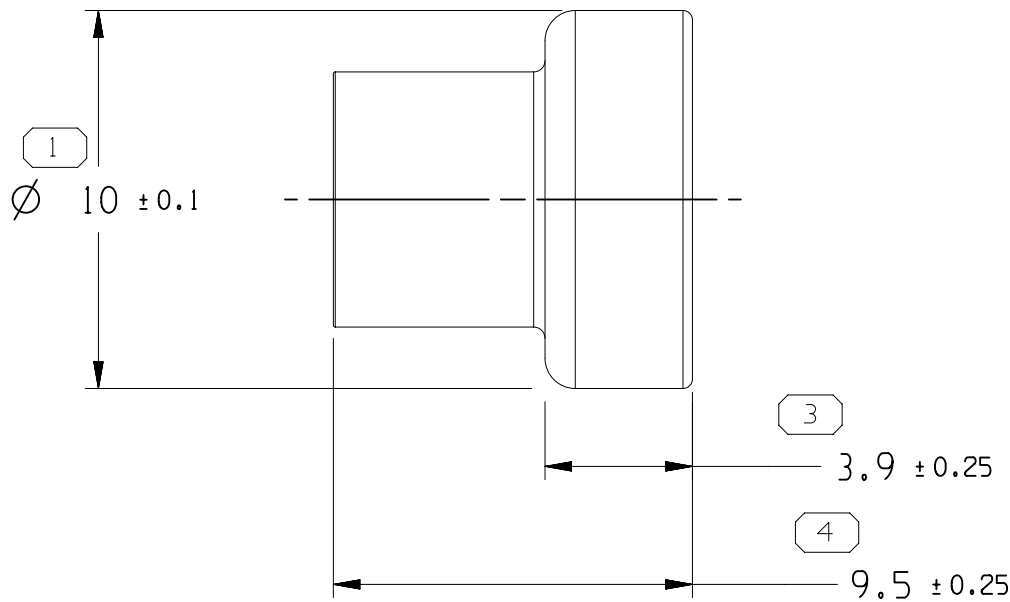
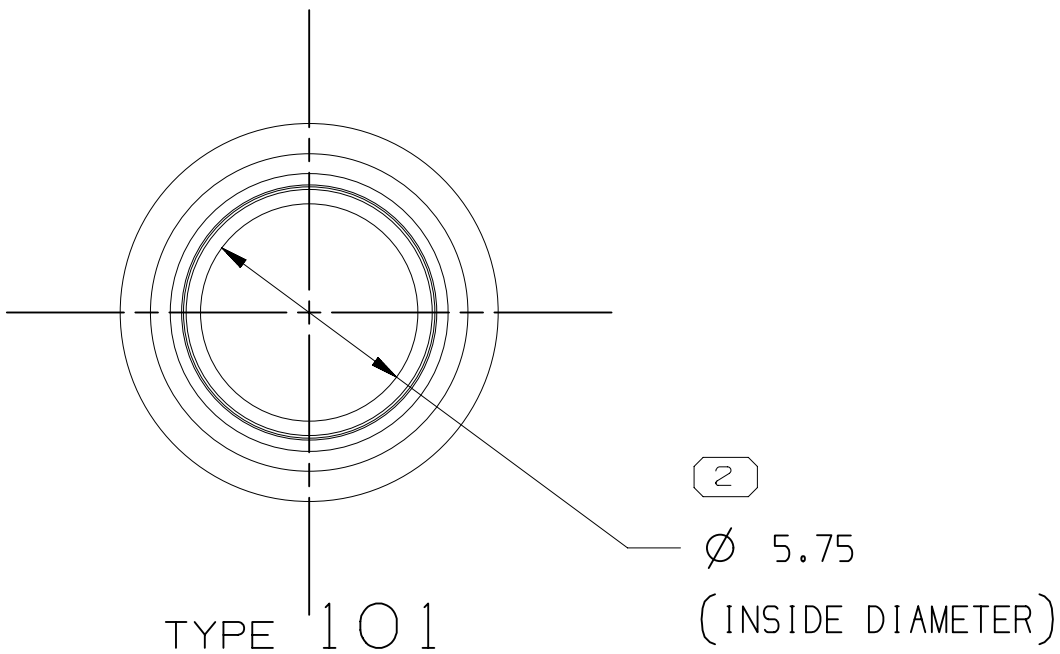
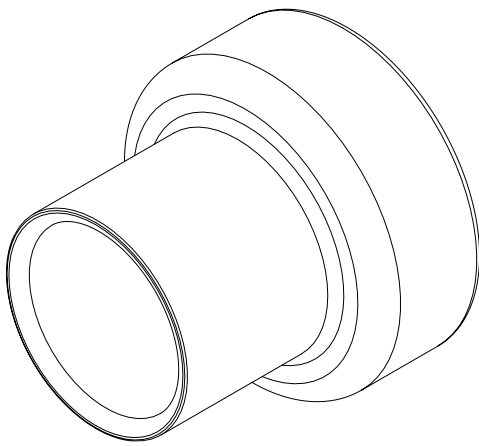
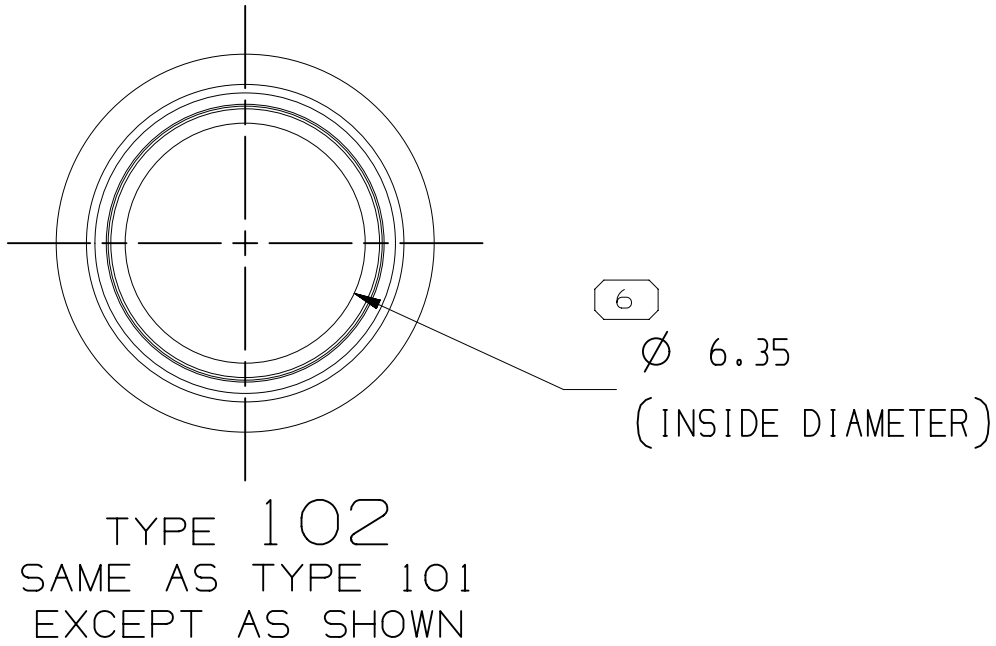


| SYMBOL DEFINITION | | |
|--|--|---|
| A DIMENSION WITHOUT AN INSPECTION REPORT SYMBOL □ DOES NOT REQUIRE INSPECTION. IT MAY BE CONTROLLED ON THE INDIVIDUAL COMPONENT DRAWING. | TOTAL NO OF INSPECTIONS REQUIRED | 5 |
| | LAST NO. USED | 6 |

| MISSING SYMBOLS | DWG STATUS | | | | | ZONE | REVISION HISTORY | AUTH | DR | APVD 1 | APVD 2 |
|-----------------|------------|-----|-----|-----|-----|------|----------------------|--------|----|-----------|-----------|
| | DATE | STG | REV | N/P | CHG | | | | | | |
| 5 | 19AP21 | R | 01 | - | - | | RELEASE PART DRAWING | 446645 | JL | AM | JL |



NOTES

- UNLESS OTHERWISE SPECIFIED AND/OR INDICATED:
DIMENSIONS ARE TO FACE OF VIEW SHOWN AND AUTOMATICALLY ROUNDED BY COMPUTER FOR INSPECTION (SEE MATH MODEL FOR PRECISE DIMENSIONS). FOR ALL OTHER DIMENSIONS NOT SHOWN BUT REQUIRED FOR TOOL BUILD, SEE MATH MODEL FOR PRECISE TOOL PATH DATA.
- THIS COMPONENT IS USED IN CONJUNCTION WITH COMPONENTS SHOWN ON TAXI 13737697.
- PART MECHANICAL AND ENVIRONMENTAL IS DESIGN TO CONFORM TO SAE/USCAR-37 (AUG 2008): CRIMP SHIELDED CABLE RETENTION FORCE IS 175N MIN.
- THIS DRAWING IS FOR CHINA USE ONLY.

| | | | |
|----------|-----|------|----------------|
| 33292551 | 01 | 102 | |
| 35559436 | 01 | 101 | CHANGAN P/N |
| 13737702 | 02 | | |
| PART NO | REV | TYPE | REMARK |

| 1 PROCESS SENSITIVE DIMENSION | | |
|--|---------|------|
| DIMENSIONS ENCLOSED IN () INDICATE REFERENCE DIMENSIONS AND NO TOLERANCE LIMITS ARE ESTABLISHED | | |
| DIMENSIONAL RANGE (MM) | CHART D | |
| FROM 0 | TO 12 | > 12 |
| TOLERANCE UNLESS OTHERWISE SPECIFIED | | |
| ±0.1 | ±0.2 | |
| ANGULAR TOLERANCE ±2° | | |

LINE DRAWN THROUGH A PART NUMBER INDICATES THAT PHYSICAL PARTS ARE NOT AVAILABLE FOR ORDERING.

PART NUMBERS THAT DO NOT HAVE A LINE PRESENT INDICATE THAT PHYSICAL PARTS ARE AVAILABLE FOR ORDERING.

CONTACT APTIV SALES TO ASSURE AVAILABILITY OF PARTS.

DWG TYPE

PART DRAWING

STYLE

VOLUME (CM³)

DISTR CODE

D

UNLESS OTHERWISE SPECIFIED

THIS DOCUMENT IS IN ACCORDANCE WITH ASME Y14.5M-1994 AS AMENDED BY THE GM GLOBAL DIMENSIONING AND TOLERANCING ADDENDUM-2001. SEPARATE PATTERNS OF FEATURES MAY BE GAGED SEPARATELY REGARDLESS OF DATUM REFERENCES.

ALL DIMENSIONS ARE IN MILLIMETERS

REFERENCE

THIRD ANGLE PROJECTION

DO NOT SCALE

USE MATH DATA

CAD

NX

• APTIV •

CONNECTION SYSTEMS

Anting, China

COPYRIGHT 2021 APTIV. ALL RIGHTS RESERVED.

THIS DRAWING IS THE PROPERTY OF APTIV AND CONTAINS APTIV CONFIDENTIAL INFORMATION. THE REPRODUCTION, DISTRIBUTION AND UTILIZATION OF THIS DOCUMENT OR ITS RELATED CAD MATH DATA, AS WELL AS COMMUNICATION OF ANY CONTENT TO OTHERS, WITHOUT EXPRESS AUTHORIZATION, IS PROHIBITED.

DR

DATE

APVD1 JUN LIN

19AP21

APVD2 ARTHUR MA

19AP21

APVD3 JUN LIN

19AP21

APVD4

APVD5

SUBSTANCES OF CONCERN AND RECYCLED
CONTENT PER APTIV 10949001

MATERIAL
PLATED BRONZE

DRAWING NAME

TAXI TERM M FERRULE COAX SN

DRAWING NUMBER

13737701

SIZE A2

SCALE 5:1

FRAME NO 1 OF 1

SHEET NO 1 OF 1

STG R

REV 01

N/P -

Mouser Electronics

Authorized Distributor

Click to View Pricing, Inventory, Delivery & Lifecycle Information:

[Aptiv:](#)
[33292551](#)