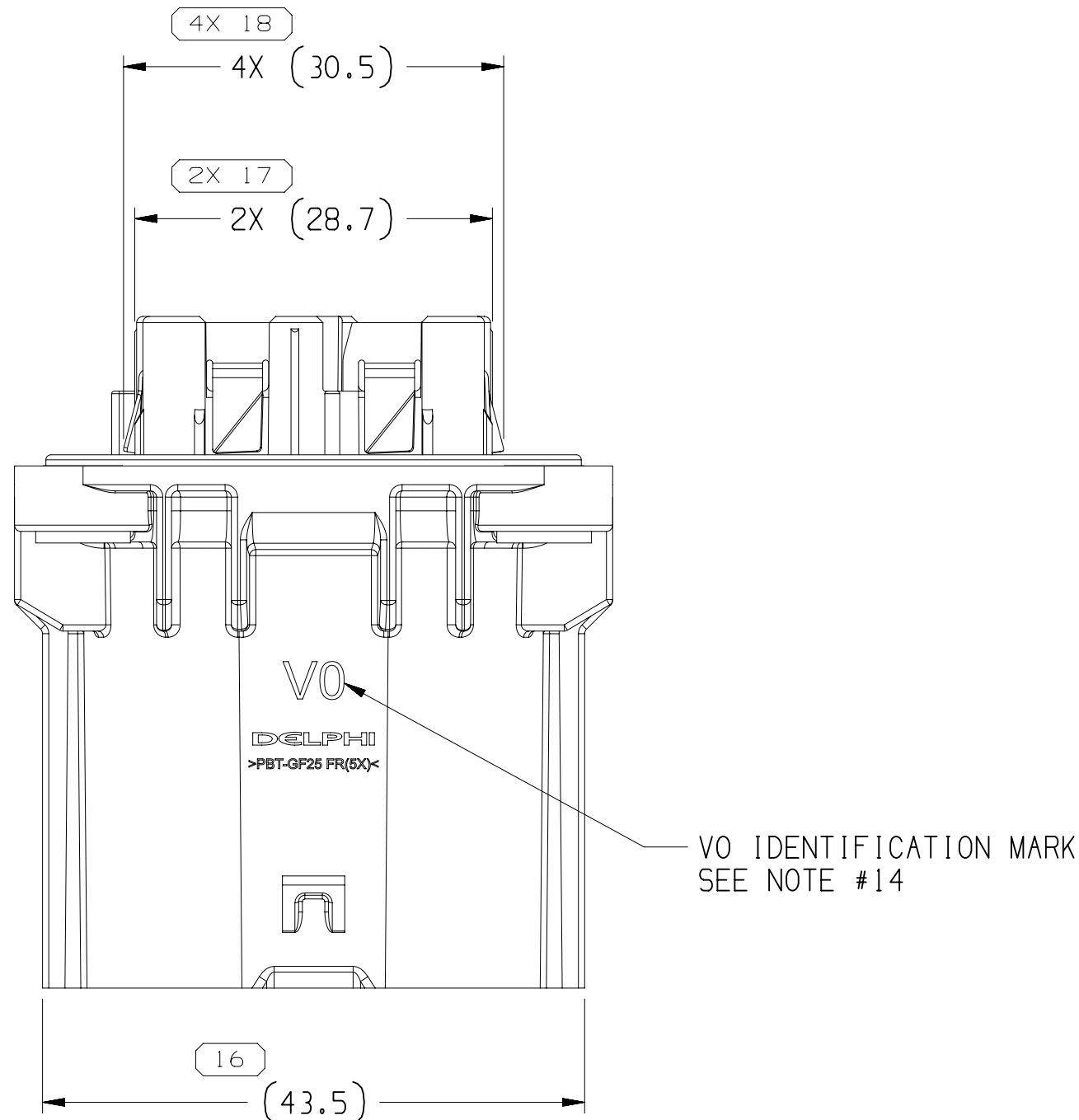
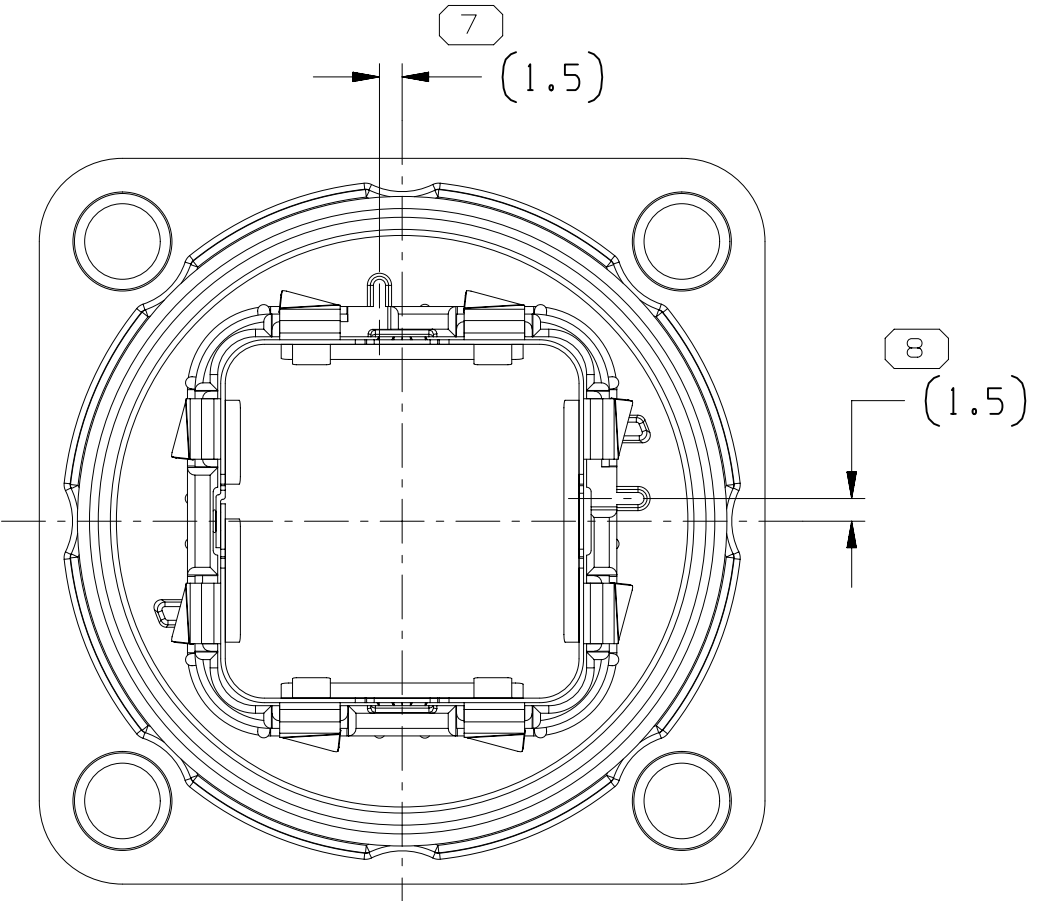
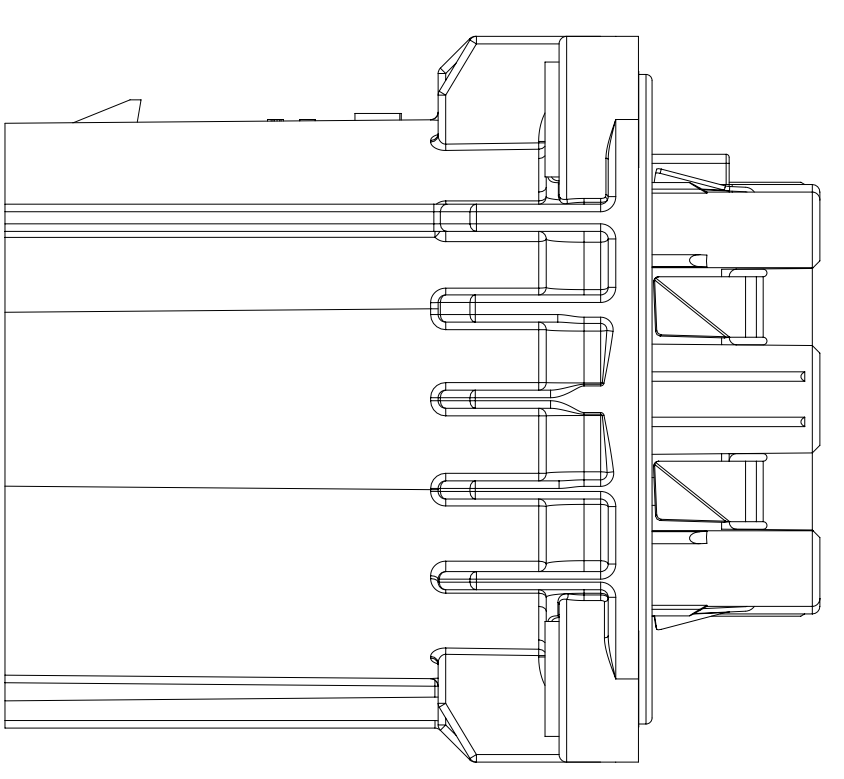
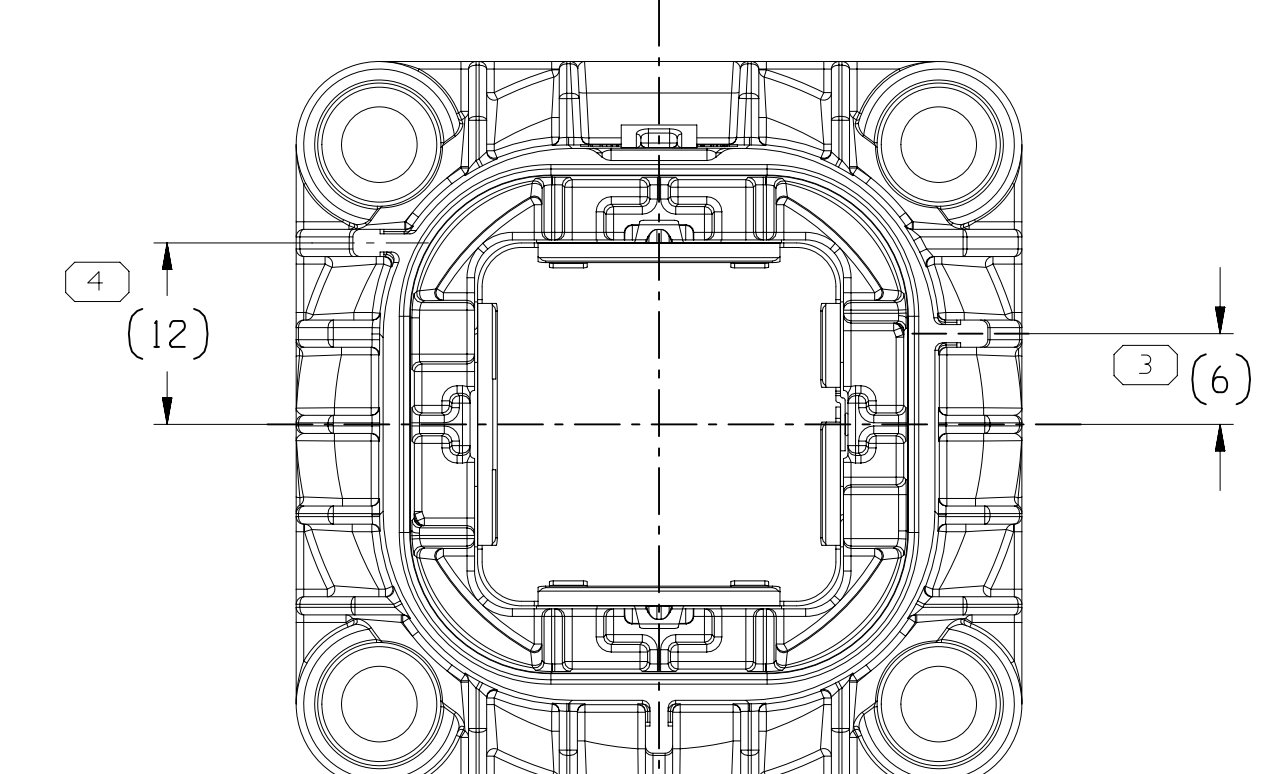


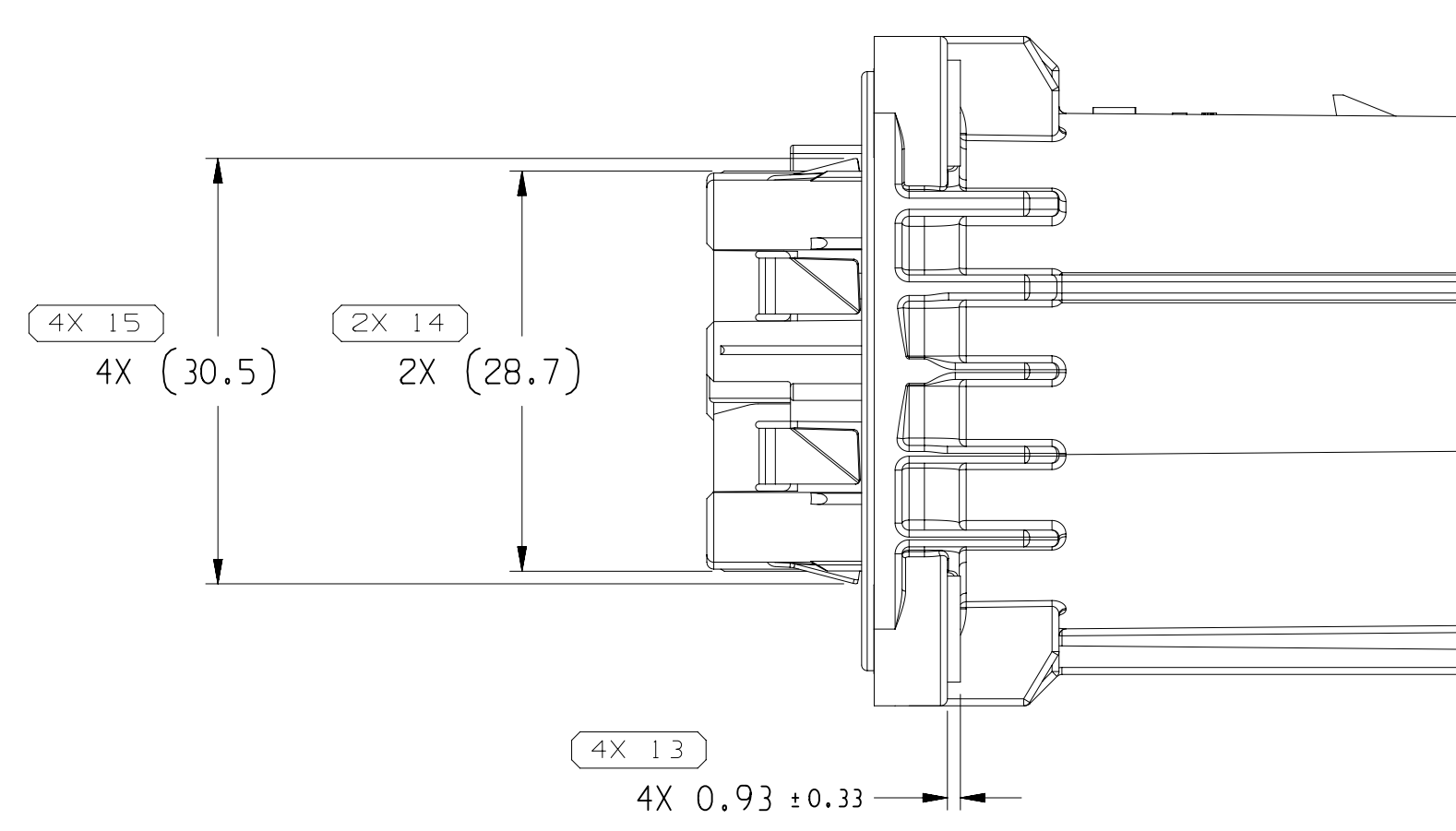
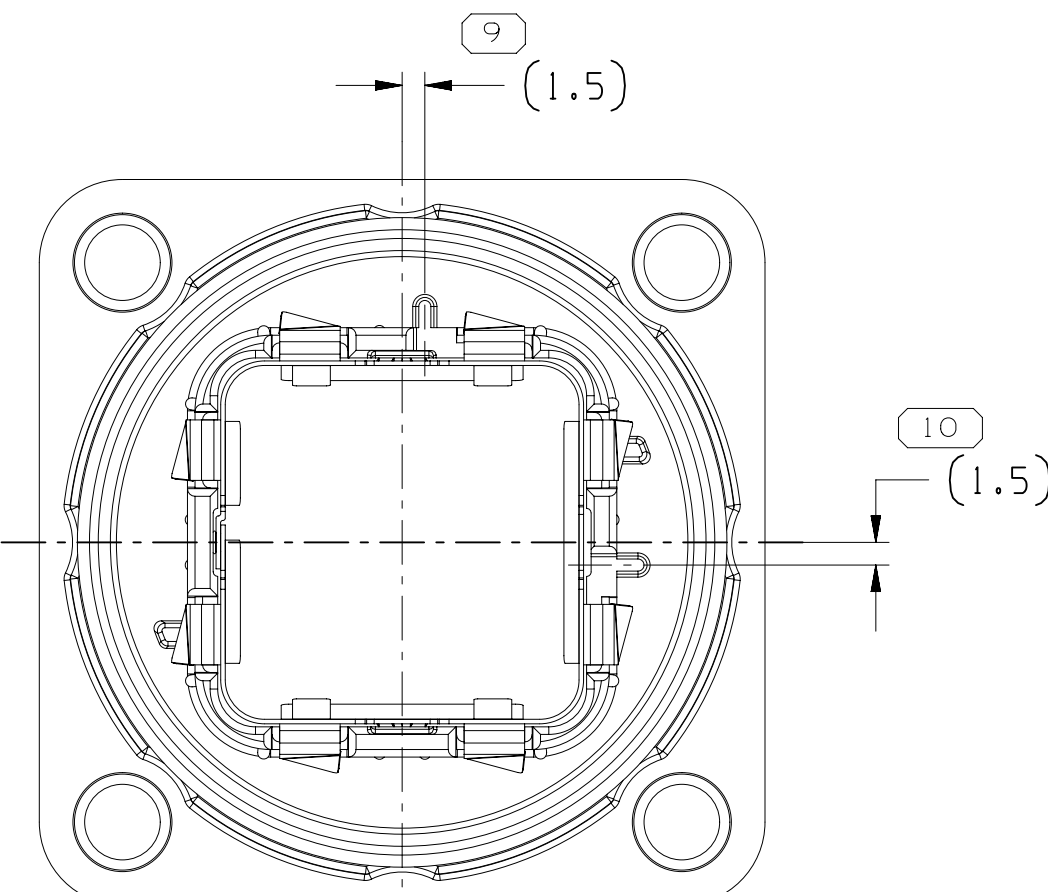
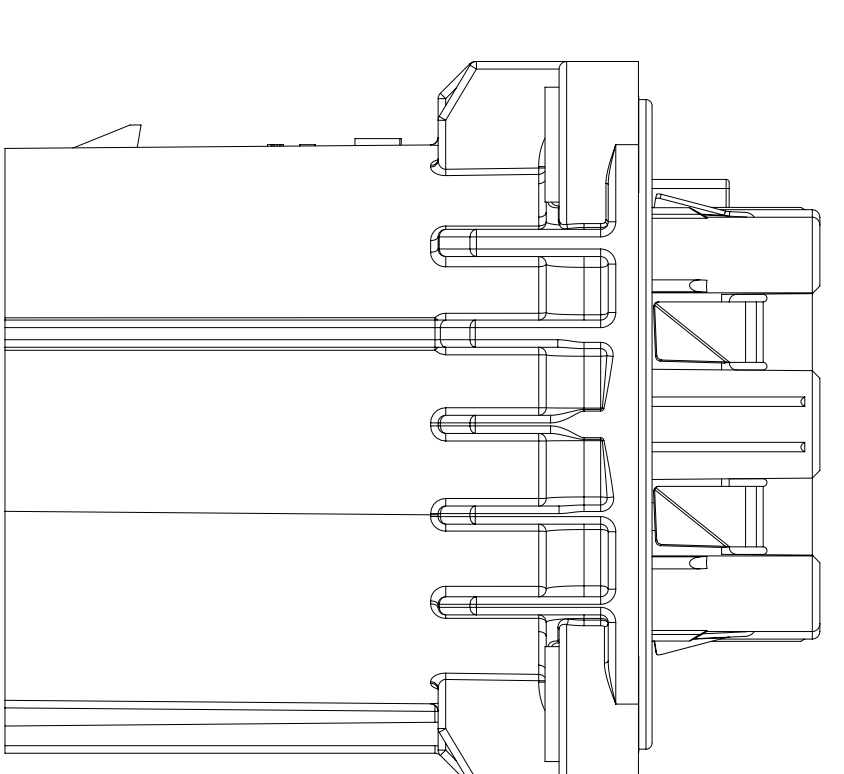
TYPE 102
SAME AS TYPE 101
EXCEPT AS SHOWN



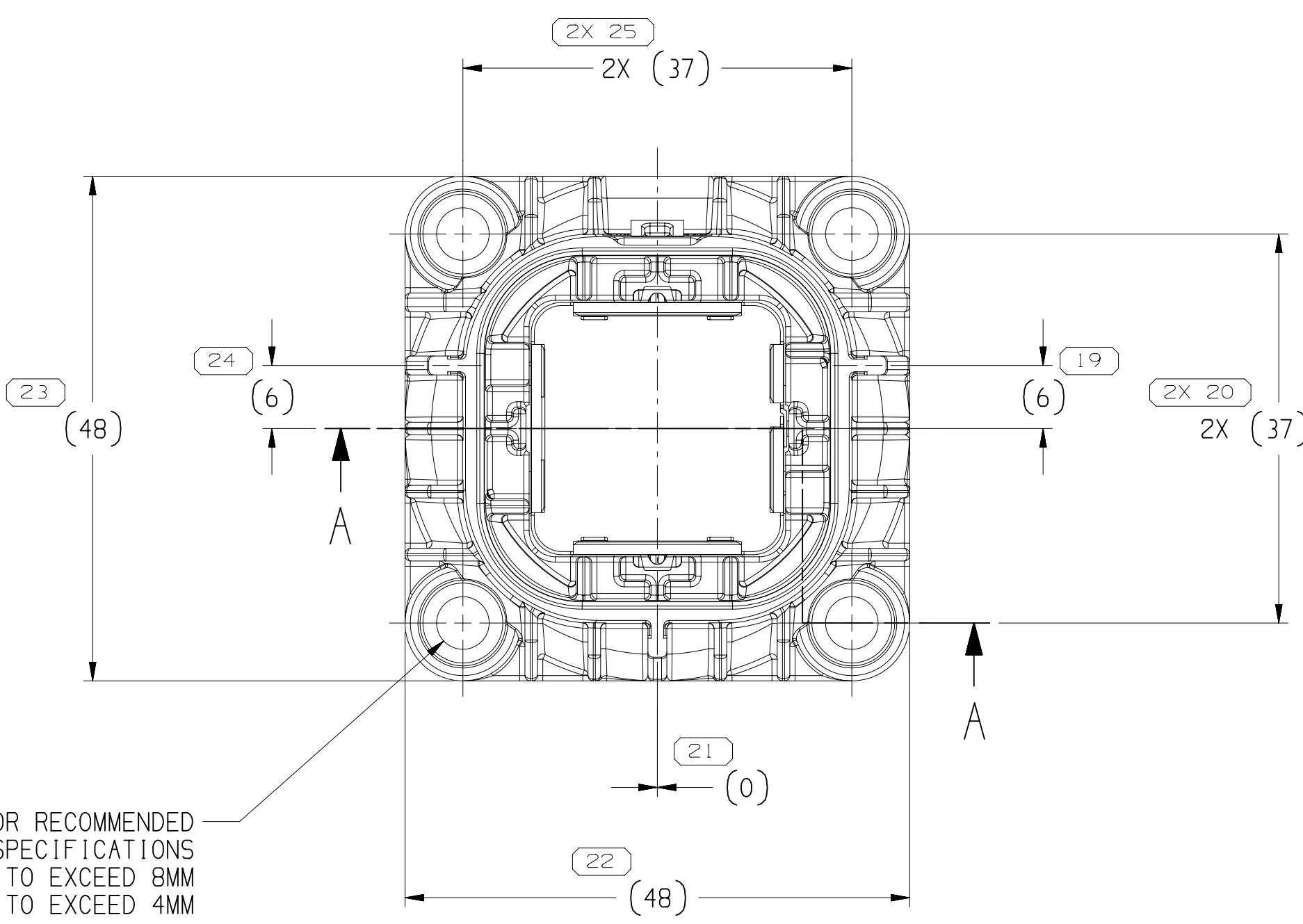
V0 IDENTIFICATION MARK
SEE NOTE #14



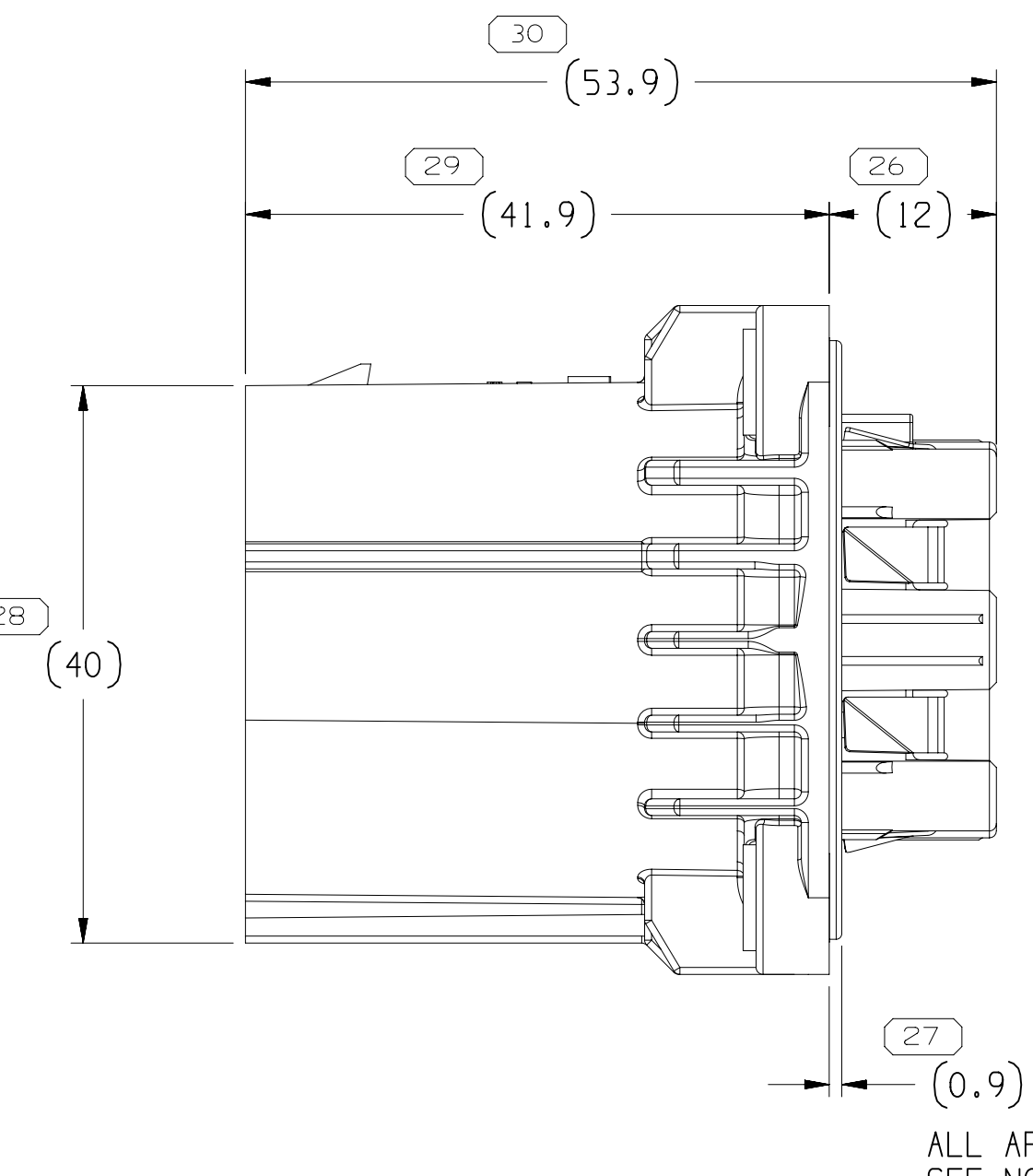
TYPE 103
SAME AS TYPE 101
EXCEPT AS SHOWN



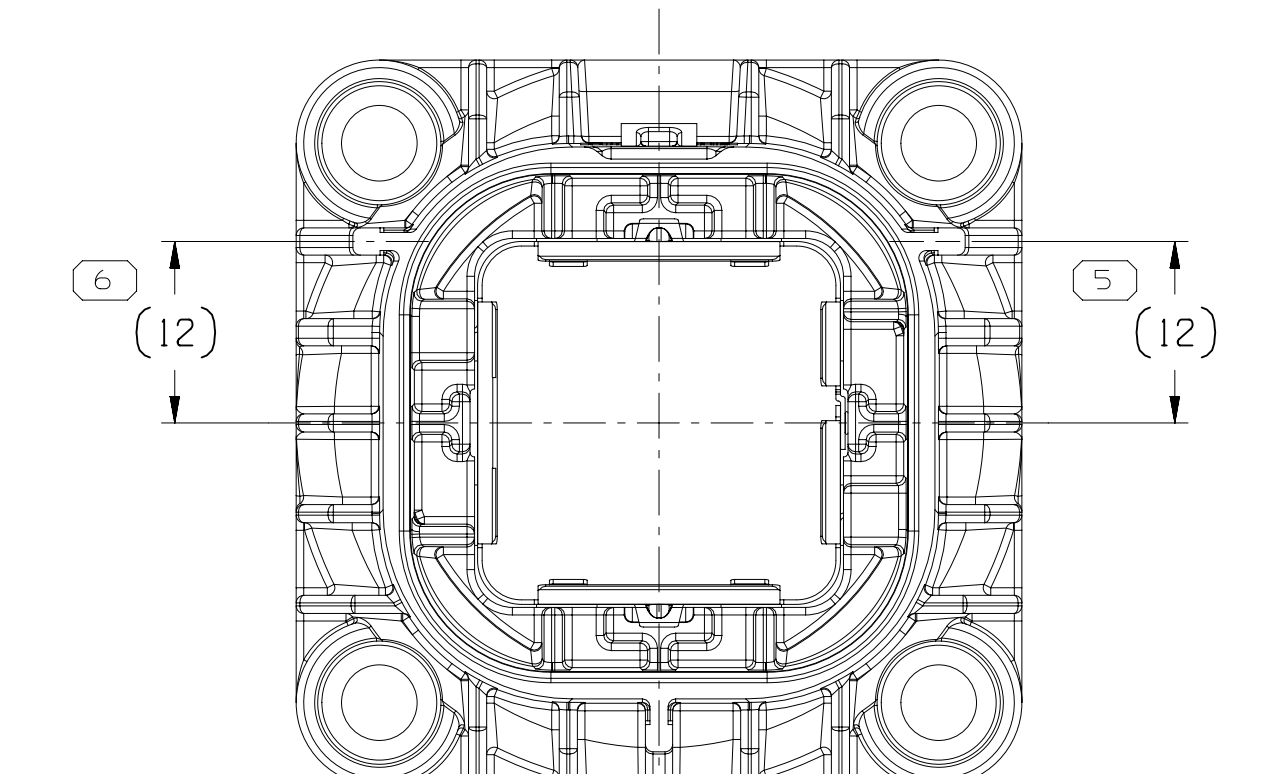
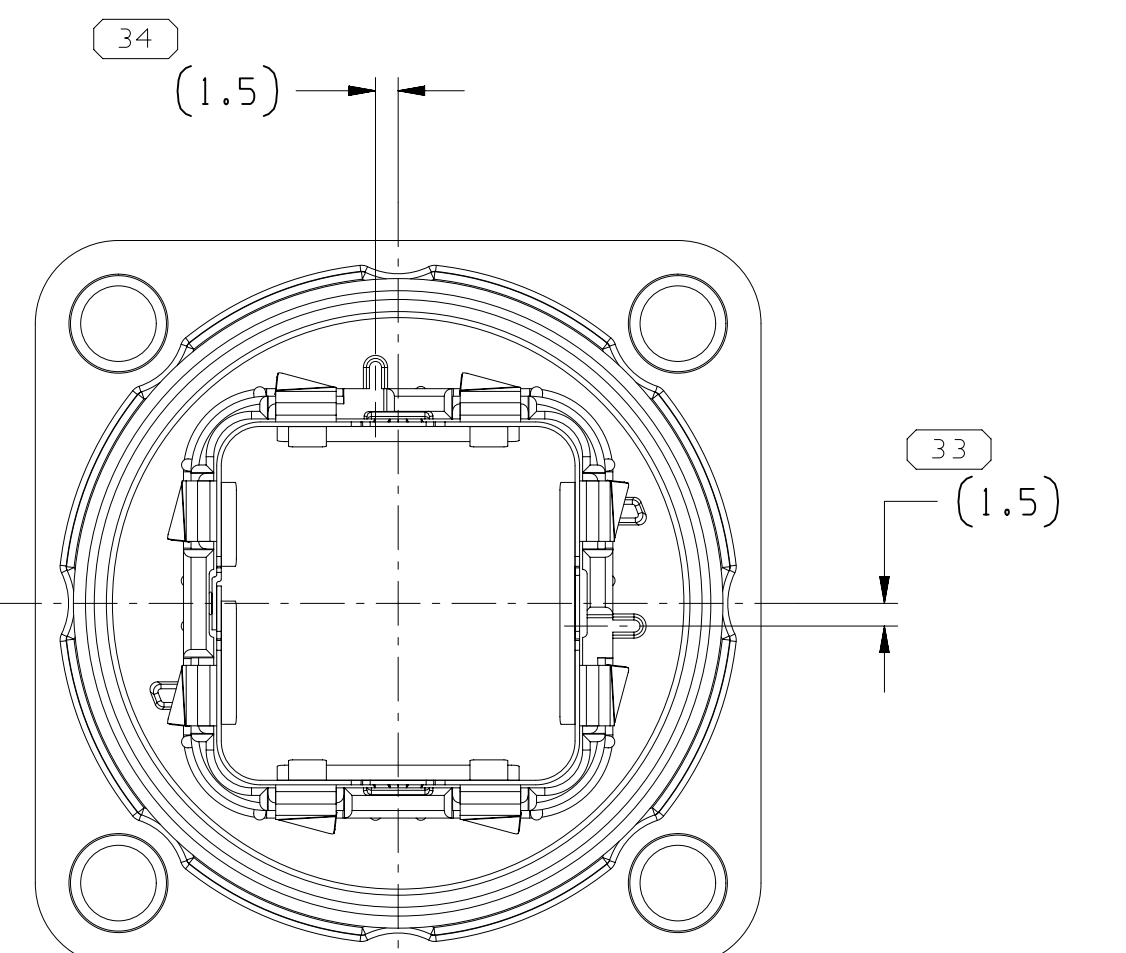
4X SEE NOTE #7 FOR RECOMMENDED
FASTENER TIGHTENING SPECIFICATIONS
M4 FASTENER HEAD DO NOT TO EXCEED 9MM
M4 FASTENER HEAD HEIGHT NOT TO EXCEED 4MM



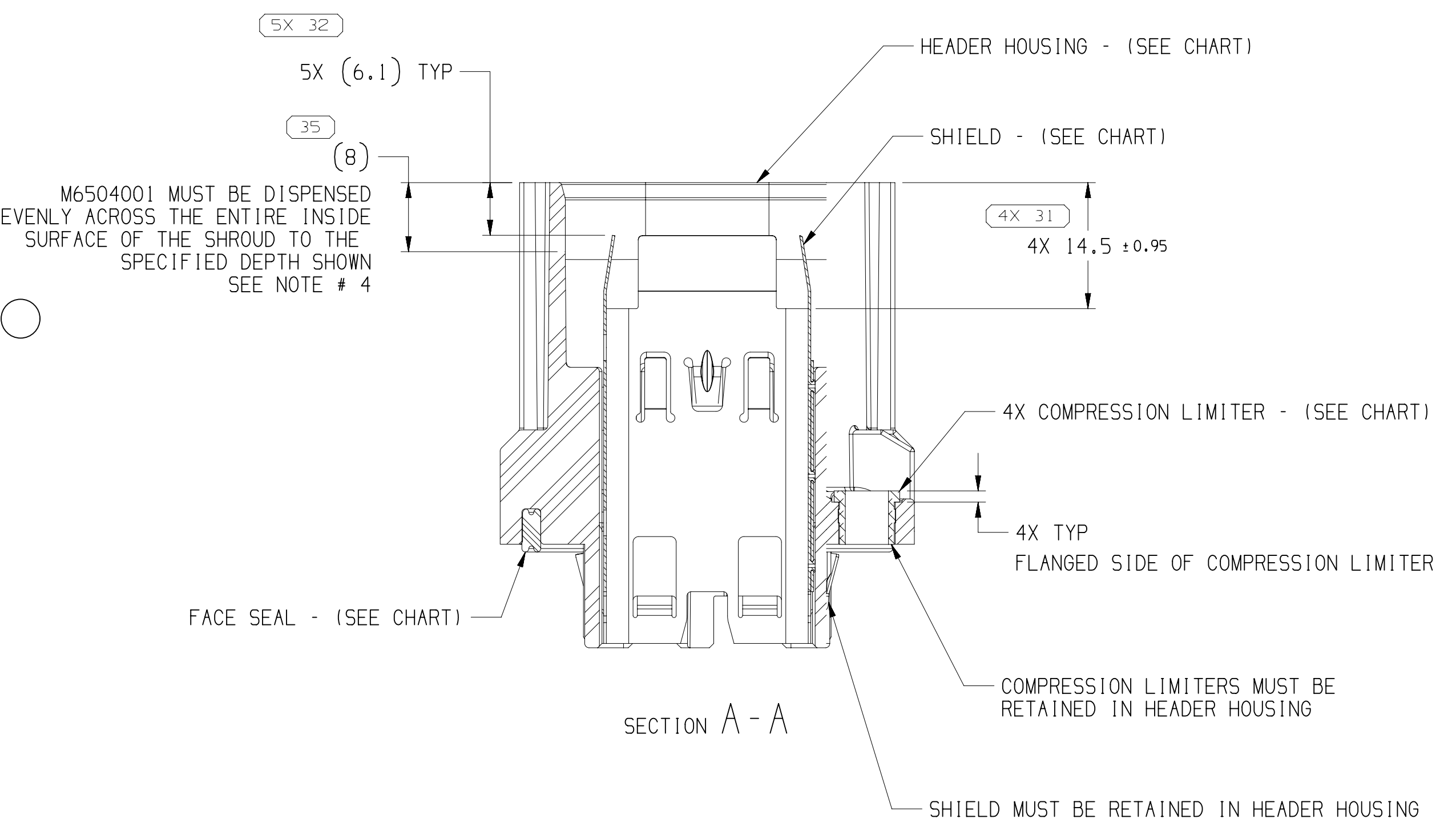
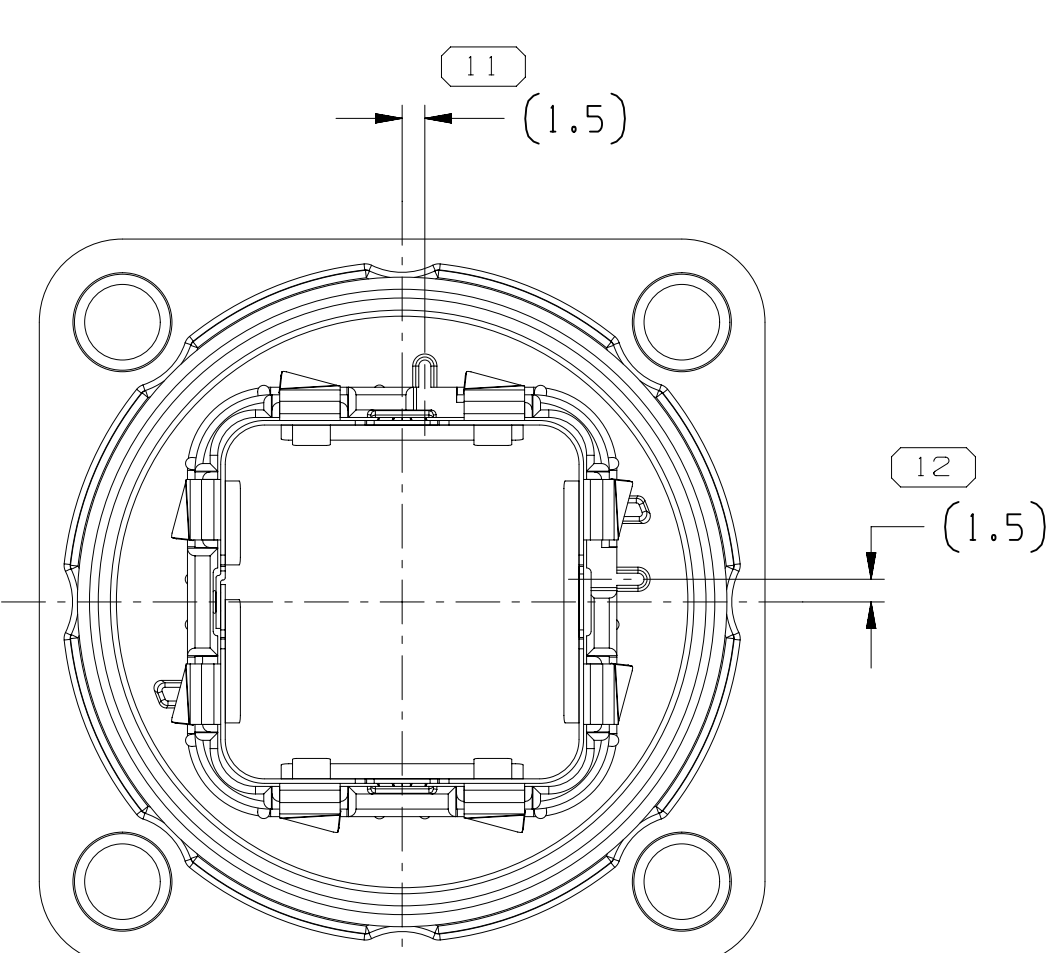
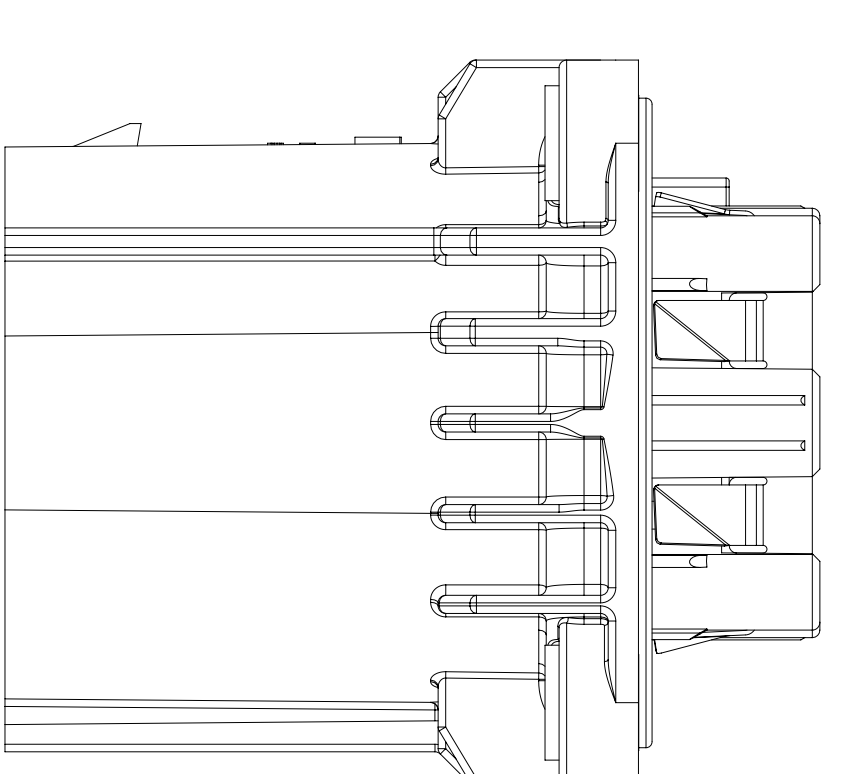
TYPE 101



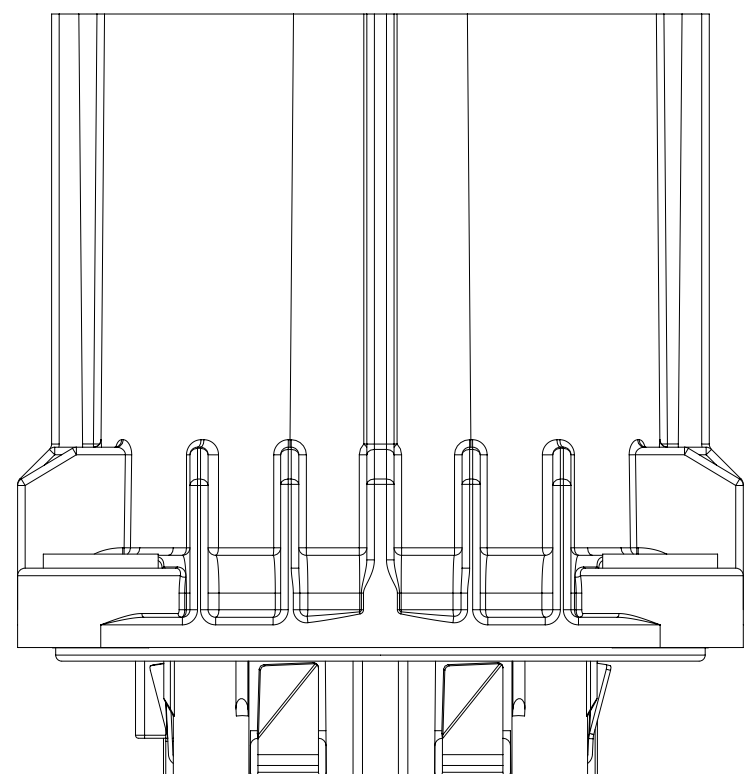
ALL AROUND
SEE NOTE # 9



TYPE 104
SAME AS TYPE 101
EXCEPT AS SHOWN



M6504001 MUST BE DISPENSED
EVENLY ACROSS THE ENTIRE INSIDE
SURFACE OF THE SHROUD TO THE
SPECIFIED DEPTH SHOWN
SEE NOTE # 4



Part No.	Rev	N/P	Type	Header Housing I-REQ'D	Shield I-REQ'D	Face Seal I-REQ'D	Compression Limiter 4-REQ'D	Dry-Film I-REQ'D	Qty - (Refer Control Plan)
35161789	02	AA	104	35132012					
35161788	02	AA	103	35132011					
35161787	02	AA	102	35132010					
35099959	02	AA	101	35132009					

- NOTES
- UNLESS OTHERWISE SPECIFIED AND/OR INDICATED:
DIMENSIONS ARE TO FACE OF VIEW SHOWN AND
AUTOMATICALLY ROUNDED BY COMPUTER FOR INSPECTION
(SEE MATH MODEL FOR PRECISE DIMENSIONS). FOR ALL
OTHER DIMENSIONS NOT SHOWN BUT REQUIRED FOR TOOL
BUILD, SEE MATH MODEL FOR PRECISE TOOL PATH DATA.
 - PARTS MEET THE PERFORMANCE REQUIREMENTS OF SAE/USCAR-2 R6,
SAE/USCAR-37 AUG 2008, FOR THE FOLLOWING CLASSIFICATIONS:
TEMPERATURE CLASS 3 (-40° C TO 125° C)
VIBRATION CLASS 1 (ON BODY OR CHASSIS)
SEALING CLASS 3 (P/V LEAK/ SUBMERSION/ HIGH PRESSURE SPRAY)
REFERENCE MANUAL 33357995 FOR ASSEMBLY/DISASSEMBLY INFORMATION.
 - M6504001 MUST BE APPLIED EVENLY ACROSS THE SEALING SURFACE. DRY-FILM
APPLICATION MUST BE INSPECTED PER THE MEASUREMENT METHOD DEFINED IN THE
CONTROL PLAN AND APPROVED BY THE PRODUCT ENGINEERING PORTFOLIO MANAGER.
 - PARTS MUST BE FREE OF DUST, CARDBOARD FIBER, LOOSE METAL SLIVERS OR ANY
PARTICULATE MATTER THAT MAY CAUSE FIT OR FUNCTION CONCERNS.
 - THIS PRODUCT IS NOT CATEGORIZED AS AN APPEARANCE ITEM. MINOR
IMPERFECTIONS INCLUDING, BUT NOT LIMITED TO, FLOW MARKS, COLOR
BLEMISHES, GATE VESTIGES, AND SOFT FLASH THAT DO NOT AFFECT THE
FIT, FORM, OR FUNCTION OF THE PART ARE PERMISSIBLE PER EAMP-4.3.CS-01.EN.
 - RECOMMENDED FASTENER TIGHTENING TORQUE IS 2.5NM. OVER TORQUE TESTING AND
TORQUE TO FAILURE MUST BE PERFORMED BY DEVICE CASE OR TIER ONE SUPPLIER.
 - THIS ASSEMBLY MUST BE LEAK TESTED PER ES-A-755 BY THE CONNECTION SYSTEM SUPPLIER.
 - SEAL MAY BECOME DILLODGED DURING SHIPPING AND HANDLING. BEFORE ATTACHING
TO THE MATING DEVICE OR COVER, THE OPERATOR MUST MAKE SURE THE SEAL IS
INTACT AND PROPERLY ASSEMBLED AS SHOWN.
 - WIRING SUPPLIER MUST VERIFY AND COMPLETE CABLE ASSEMBLY VALIDATION PER CUSTOMER
REQUIREMENTS. THIS WOULD INCLUDE CRIMP VALIDATION STUDIES FOR SELECTED
CABLE & TERMINAL COMBINATIONS.
 - PARTS MUST BE APPROPRIATELY PACKAGED TO AVOID ANY DAMAGE DURING SHIPPING
OR HANDLING. THE SHIPPING CONTAINER MUST BE LINED WITH PLASTIC LINERS.
BAG OR LINERS MUST BE SEALED TO AVOID FOREIGN MATTER.
 - CAUTION:
THIS HEADER ASSEMBLY IS A MODULAR COMPONENT USED IN MULTIPLE SYSTEMS.
WHEN SELECTING INDEXES ALSO SEE TAXI 33300637 FOR DETAILS ON SHARED INDEXING.
THE HEADER COMPONENT SHOWN ON THIS TAXI IS MADE FROM V-0 MATERIAL.
THE SAME HEADER IS ALSO AVAILABLE IN H-B MATERIAL SHOWN ON TAXI 33300637.
FOR MATING PART DETAILS PLEASE SEE THE INDIVIDUAL APPLICATION DRAWINGS.
 - WHEN MATED WITH AN INNER CONNECTOR AND FULLY POPULATED WITH TERMINALS THE SYSTEM
MUST BE TESTED TO 3000 VOLTS (AC) FOR 10 SECONDS
BETWEEN THE POWER TERMINALS AND THE POWER TERMINALS & SHIELD COMBINATION.
 - FOR APPLICATION DATA SEE THE INDIVIDUAL APPLICATION DRAWINGS.

APTIV

CONNECTION SYSTEMS

THIS DRAWING IS THE PROPERTY OF APTIV AND CONTAINS APTIV
CONFIDENTIAL INFORMATION. THE INFORMATION CONTAINED HEREIN IS
UNCLASSIFIED BY THIS DOCUMENT IS TO BE RELEASED TO THE PUBLIC BY APTIV
IN ACCORDANCE WITH THE APTIV INFORMATION POLICY.

DATE: 18-JUN-19

TIME: 14:25:08

35161786

1 OF 2

35161786

1 OF 2

Mouser Electronics

Authorized Distributor

Click to View Pricing, Inventory, Delivery & Lifecycle Information:

[Aptiv:](#)
[35099959](#)