

11 10 9 8 7 6 5 4 3 2 1

H

G

F

E

D

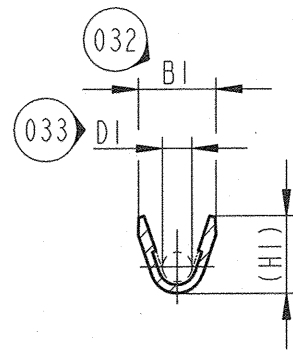
C

B

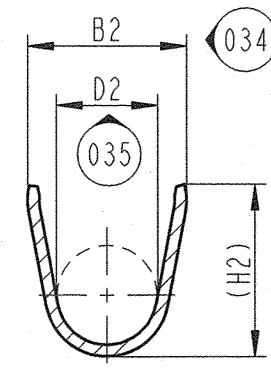
A

EUR C04 112 F29

A-A

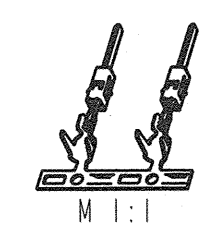
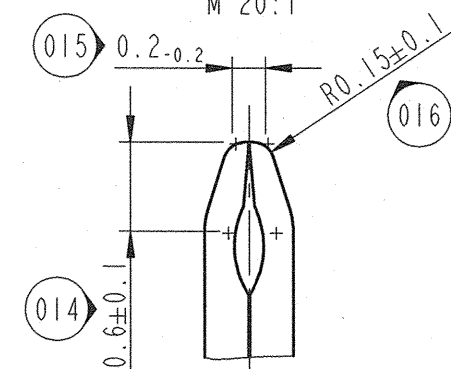


B-B

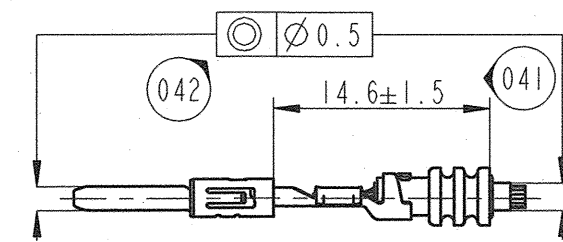


X

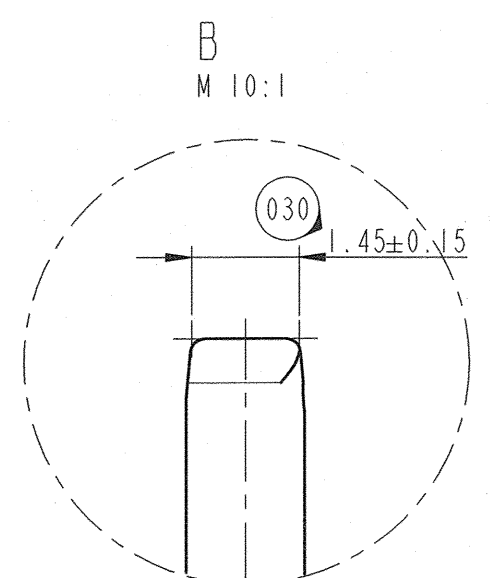
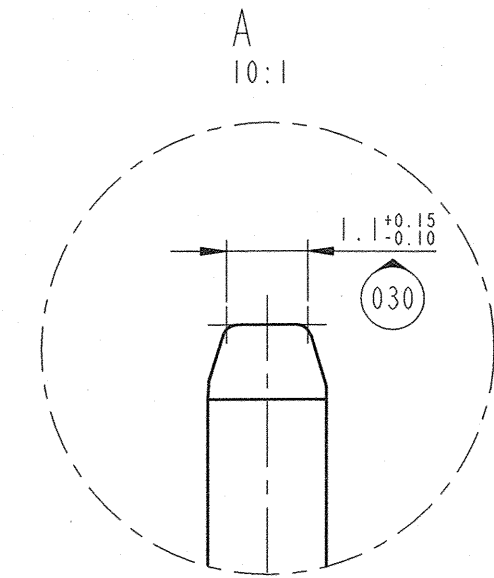
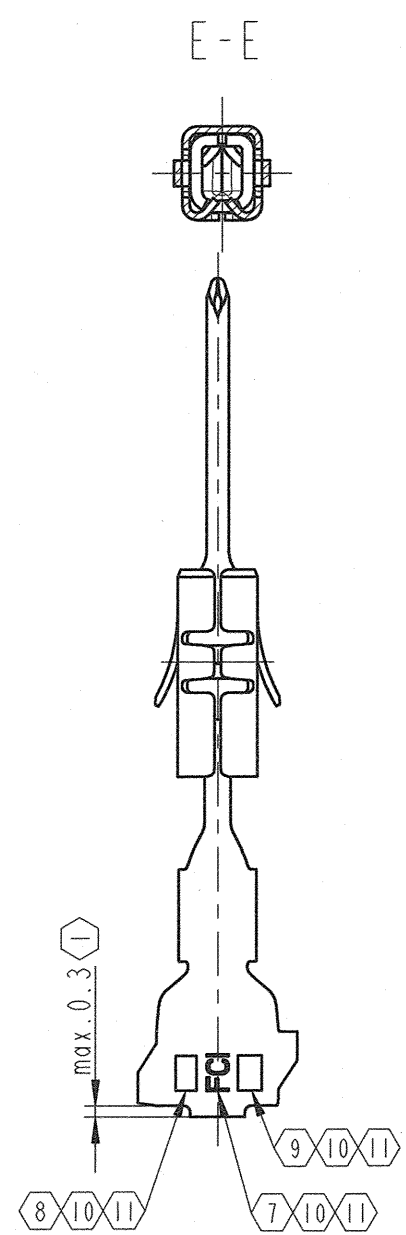
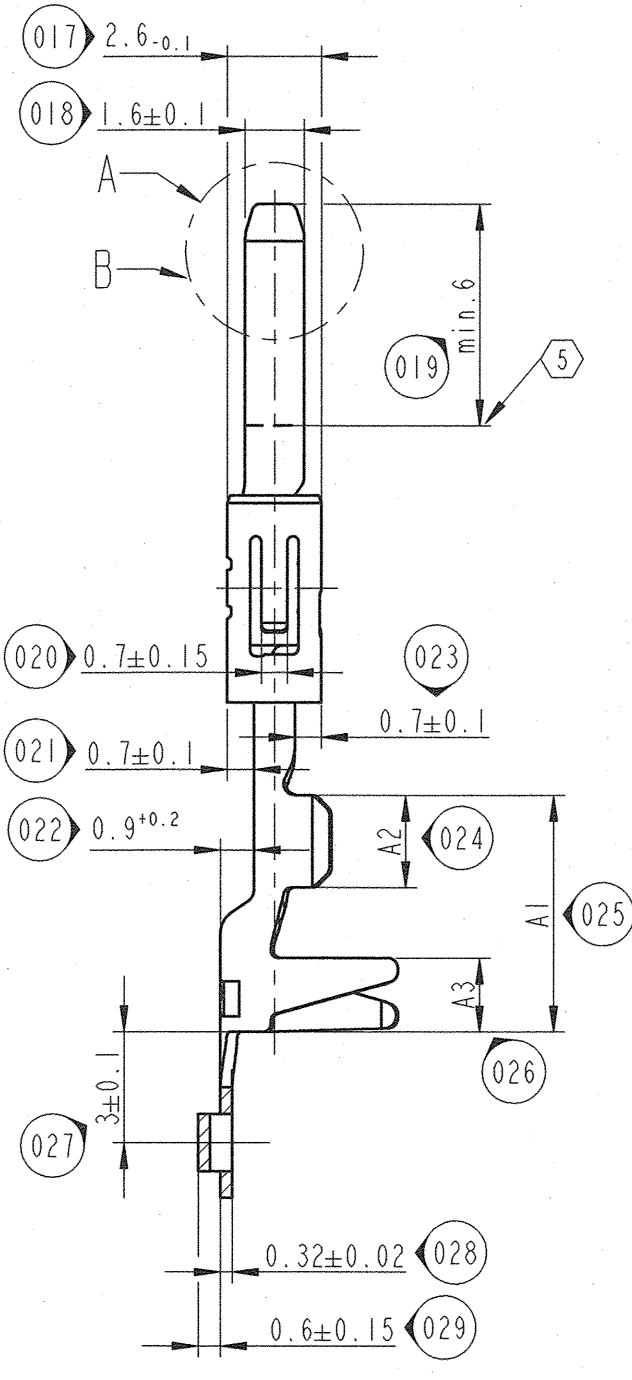
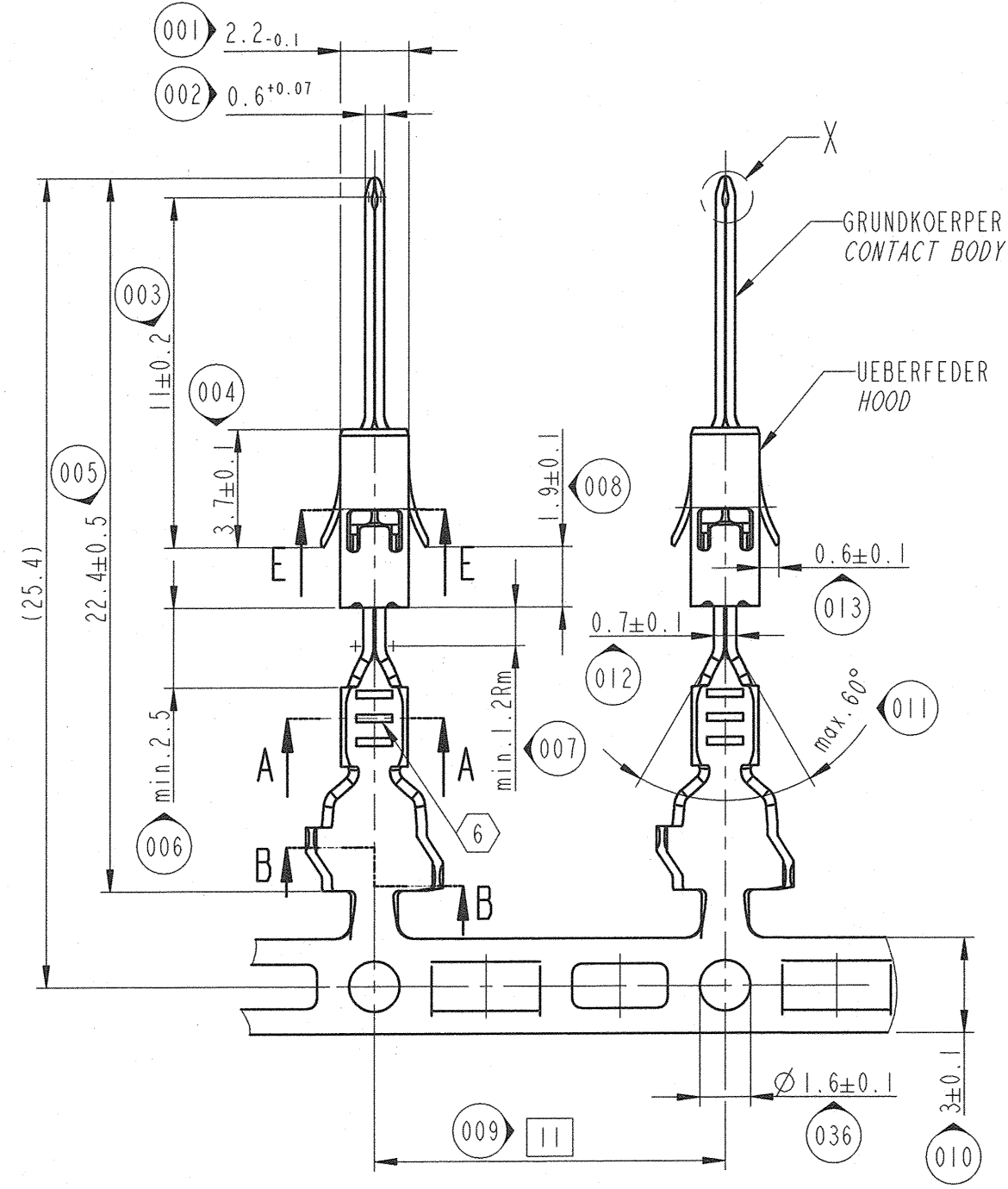
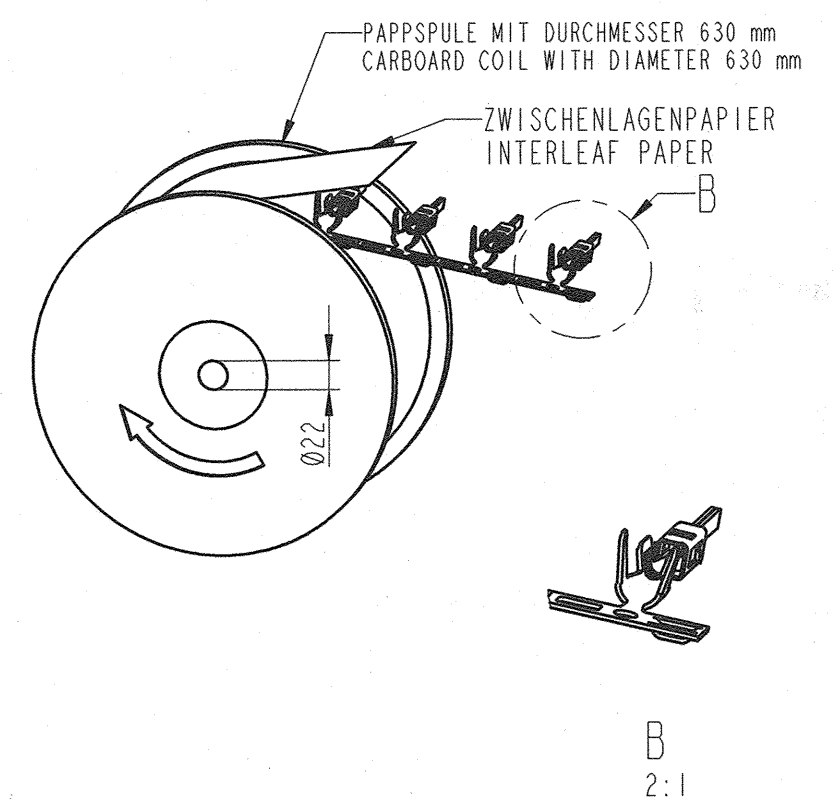
M 20:1



ANSCHLAGBILD
CRIMPED ON WIRE
M2:1



LIEFERZUSTAND (NICHT MASSSTÄBLICH)
DELIVERY CONDITION (DO NOT SCALE)
BAND VON LINKS NACH RECHTS ABLAUFEND
FEED DIRECTION FROM LEFT TO RIGHT



BEMERKUNGEN / NOTES

- MASZ GILT NUR FÜR KABELKONFEKTIONÄR
DIMENSION ONLY FOR HARNESSMAKER
- DIE VERARBEITUNG DER FLACHSTECKER ERFOLGT NACH FCI-CRIMP-SPEZIFIKATION 9 084 10 00 BLATT I
THE MALE TERMINALS MUST CRIMP ACCORDING FCI-CRIMP-SPECIFICATION 9 084 10 00 SHEET I
- CRIMPDIMENSIONIERUNG ERFOLGT FÜR FLRY-LEITUNG NACH DIN 72551-6/ CRIMP DIMENSIONS WERE DESIGNED FOR FLRY-WIRES ACCORDING TO DIN 72551-6
- DER EINSATZ DER DICHTUNG IST VOM AUSSEN-Ø DER LEITUNG UND NICHT VOM LEITUNGSQUERSCHNITT ABHÄNGIG: DER KAMMER-Ø BETRÄGT 3.6±0.11-0.15
THE USE OF SWS IS DEPENDS ON THE INSULATION-Ø ONLY AND NOT FORM THE WIRE SECTION: THE CAVITY-Ø IS 3.6±0.11-0.15
- VEREDLUNGSBEREICH FÜR GOLDVERSIONEN ALLSEITIG ÜBER EINER UNTERNICKELUNG
PLATING AREA FOR GOLDVERSIONS ALL SIDES OVER UNDERLAYER Ni
- CRIMPBereich (1-3)µm MATT Sn(GOLDDERVERSIONEN)
CRIMP AREA (1-3)µm MATT Sn(GOLDDERVERSIONEN)
- FCI-FIRMENZEICHEN/ FCI-SUPPLIER CODE
- TEILECODE / PART CODE
- WOCHE UND JAHR DER HERSTELLUNG
WEEK AND YEAR OF PRODUCTION

33402329	(1.5-3)µm Ag	3M	> 1.0 - 1.5	CuFe2P F42	6.4	3.0	2.0	3.0	4.3	1.4	2.7	3.1	5.0	A	6 099 39 34	1.9 - 2.4	GELB YELLOW
6 010 20 44	0.8µm NiAu	3H		CuSn4 F47										B			
6 010 20 41	1-3µm Sn	3T		CuFe2P F42										A			
6 010 07 41	1-3µm Sn	3L		CuFe2P F42										A			
33402328	(1.5-3)µm Ag	2M	0.5 - 1.0	CuFe2P F42	6.4	3.0	2.0	2.5	4.3	1.2	2.7	2.7	4.8	A	6 099 39 28	1.6 - 1.9	GRAU GREY
6 010 20 34	0.8µm NiAu	2H		CuSn4 F47										B			
6 010 20 31	1-3µm Sn	2T		CuFe2P F42										A			
6 010 13 34	1.27µm NiAu	2E		CuSn4 F47										A			
6 010 07 34	0.8µm NiAu	2V	> 0.2 - 0.35	CuFe2P F42	6.4	2.5	2.0	2.1	4.3	0.8	2.7	2.1	4.8	A	6 099 39 13	1.2 - 1.6	ROT RED
6 010 07 31	1-3µm Sn	2L		CuFe2P F42										B			
6 010 20 14	0.8µm NiAu	1H		CuSn4 F47										A			
6 010 20 11	1-3µm Sn	1T		CuFe2P F42										A			
6 010 13 14	1.27µm NiAu	1E	> 0.2 - 0.35	CuSn4 F47	6.4	2.5	2.0	2.1	4.3	0.8	2.7	2.1	4.8	A	6 099 39 13	1.2 - 1.6	ROT RED
6 010 07 14	0.8µm NiAu	1V		CuFe2P F42										B			
6 010 07 11	1-3µm Sn	1L		CuFe2P F42										A			
6 010 07 11	1-3µm Sn	1L		CuFe2P F42										A			
ZEICHNUNGS-NR. DRAWING-NO.	OBERFLÄCHE CONTACT FINISH	TEILE CODE PART CODE	KABELQUERSCHN. (mm²) KABEL: FLR WIRE SIZE (mm²)	GRUNDKÖRPER CONTACT BODY	UEBERFEDER CANTILEVER SPRING	A1 ±0.2	A2 ±0.1	A3 ±0.2	B1 ±0.3	B2 ±0.3	D1 ±0.3	D2 ±0.3	(H1) (H2)	FRONT NACH ACC. DETAIL	DELPHI-TEILE NR. DICHTUNG DELPHI PART -NO SWS	ISOLATIONS-Ø LEITUNG INSULATION-Ø WIRE	FARBE DICHTUNG COLOUR SWS

Rm = Radiusmitte
radius center point
E = Eckenmasz
width across corners

14-07511	10.07.14	E	A-C 10-11	NEW PART NUMBERS FOR SILVER PLATED PARTS WERE ADDED (SEE TABLE); NOTE NUMBER 10 AND 11 WERE DELETED	St.Mueller	P.Nuetzel	Hoernlein
538708	16.02.11	D	C10 D06 C03/D03 C03/C01	Redrawn in Pro-E; Crimp code deleted; Part code added; Week and year of production added; Note added; Note added; 3D view added;	Sathish	St.Mueller	Hoernlein
479706	12.07.06	C04	-	UEBERARBEITUNG	S.Weiss	P.Nuetzel	Hoernlein
ECN-NO. ECN NUMBER	DATE DATUM	DOI MM / YY REVISION INDEX	POSITION POSITION	CHANGE DESCRIPTION ÄNDERUNG	DRAWN BY GEZ.	CHK. BY GEZ.	APPR. BY GEZ.
PRODUCT SPEC. PRODUKT SPEZIFIK.	PACKAGING SPEC. VERPACKUNGS SPEZIFIK.	APPLICATION SPEC. ANWENDUNGS SPEZIFIK.	COPYRIGHT DELPHI CORPORATION AND/OR ITS AFFILIATES. ALL RIGHTS RESERVED. REVISED THIS DRAWING IS THE PROPERTY OF DELPHI CORPORATION. THE REPRODUCTION, DISTRIBUTION AND UTILIZATION OF THIS DOCUMENT OR ITS RELATED AND MATERIELS WITHOUT EXPRESS DATA, AS WELL AS COMMUNICATION OF ANY CONTENT TO OTHERS, WITHOUT EXPRESS AUTHORIZATION IS PROHIBITED.	DELPHI DELPHI PACKARD ELECTRICAL/ELECTRONIC ARCHITECTURE NUREMBERG GERMANY			CAD SYSTEM pro / eng.
TOLERANCES TOLERANZEN	MATERIAL MATERIAL	COLOUR FARBE	ECO Loc. Code STANDORT CODE	ISO PROJECTION ISO PROJEKTION	DIMENSION IN MILLIMETERS BEMASSUNG IN MILLIMETERN	DWG SIZE FORMAT A2	SHEET BLATT
COUNTERPART NO. GEGENSTÜCK NR.	DATE DATUM	NAME NAME	TITLE BENENNUNG	DRAWING NUMBER ZEICHN. NUMBER	FILE NAME DATE / NAME	SCALE M: 1:1	
DO NOT SCALE DRAWING ZEICHNUNG NICHT VERMESSEN	DATE DATUM	NAME NAME	TITLE BENENNUNG	MALE CONTACT DCS2-1.5 FOR APPLICATION WITH SWS	6 010 07 11		
DRAWN BY GEZ.	11.08.	S.Mueller	ESR NO. ESR NUMBER	CAT. NO. KATALOG NR.	60100711C-B1.EDRW		
CHECKED BY GEZ.	11.08.	S.Mueller					
APPROVED BY GEZ.	11.08.	G.May					

Mouser Electronics

Authorized Distributor

Click to View Pricing, Inventory, Delivery & Lifecycle Information:

[Aptiv:](#)
[10779703](#)