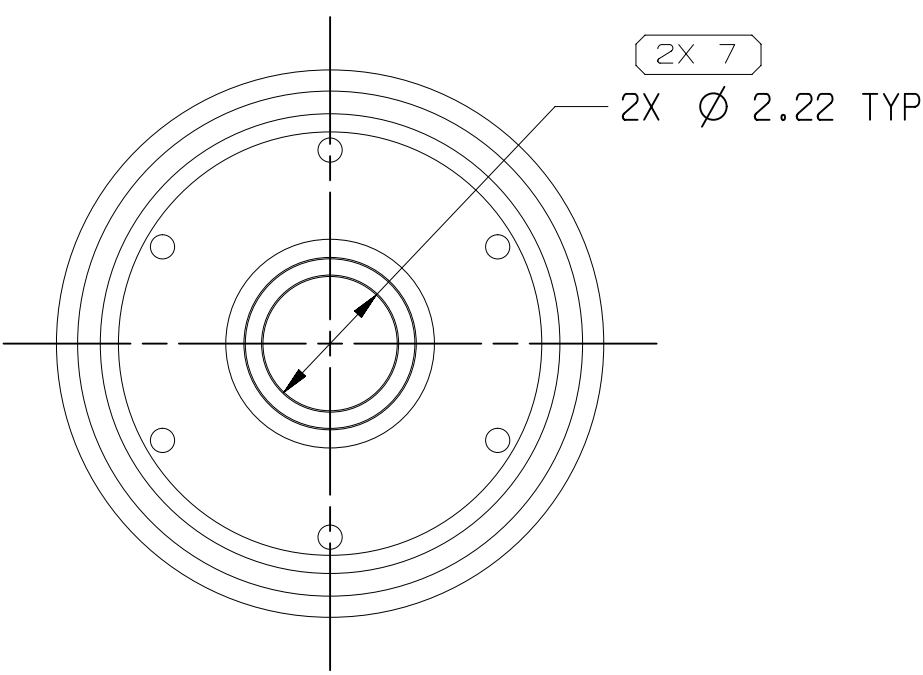
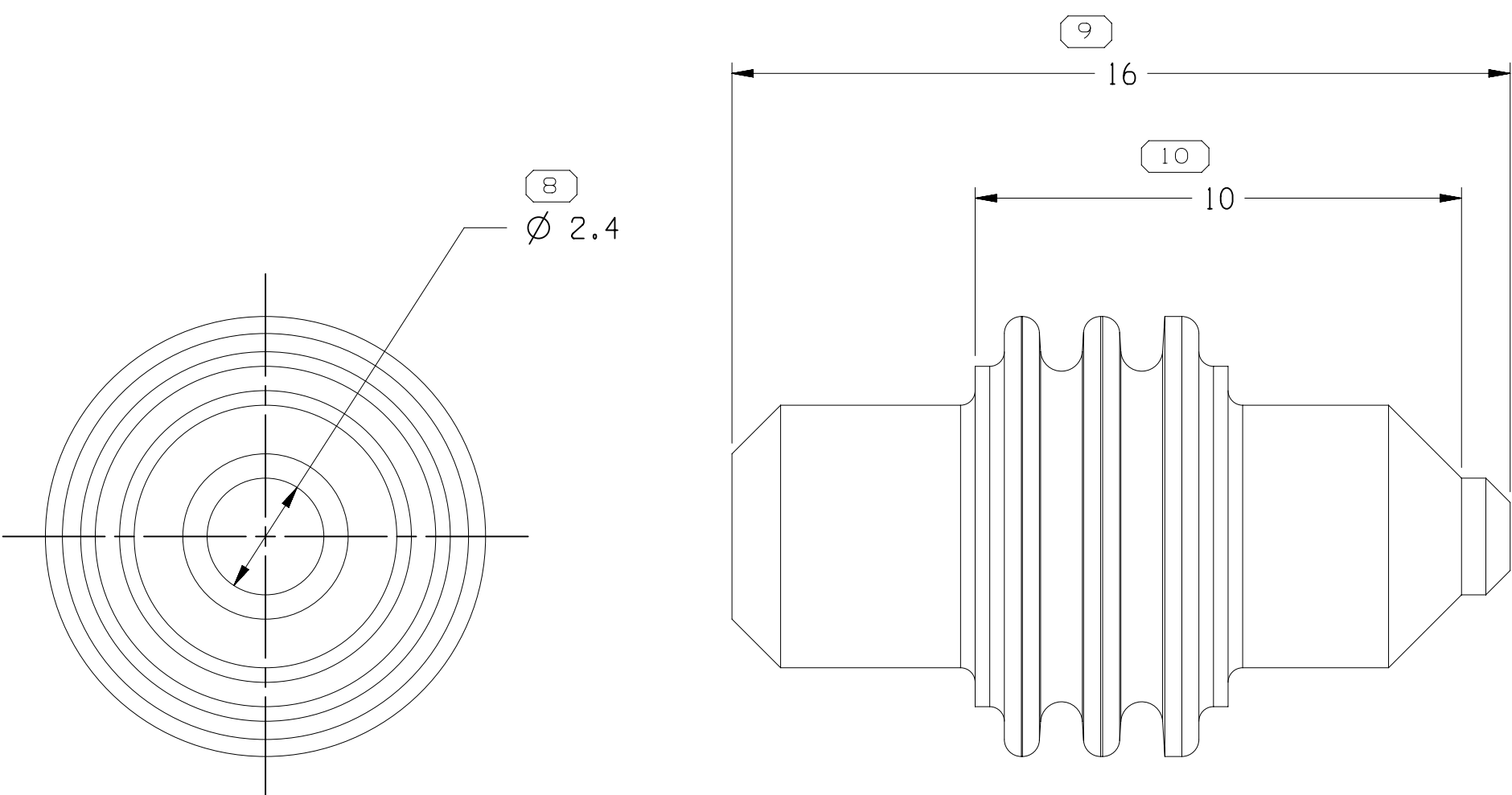


TYPE 102
SAME AS TYPE 101
EXCEPT AS SHOWN



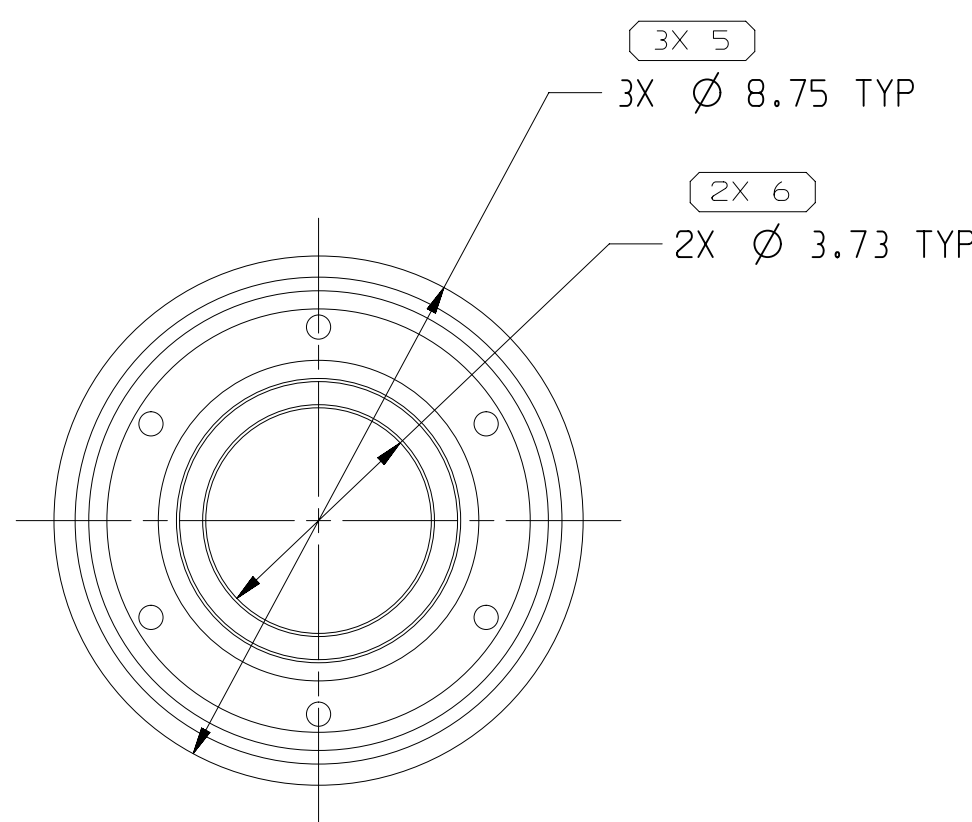
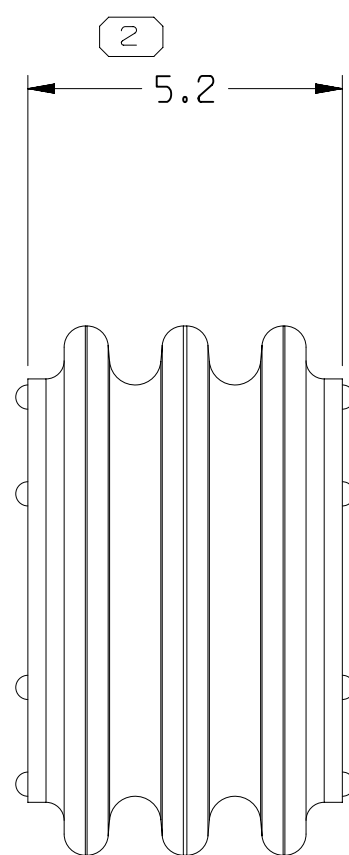
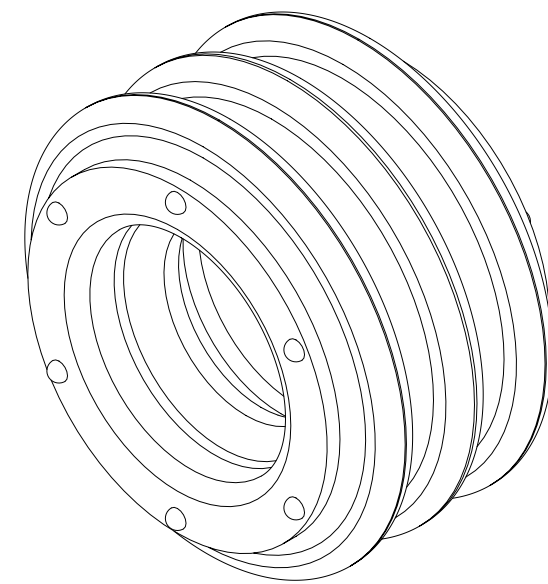
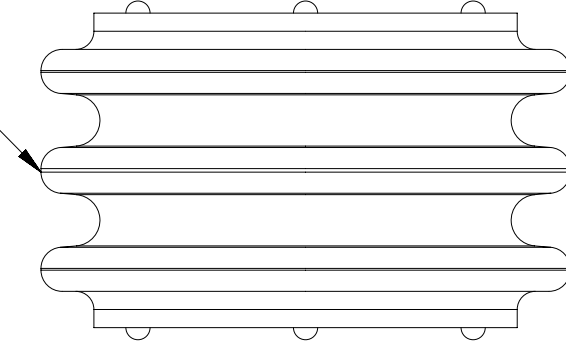
TYPE 103
SAME AS TYPE 102
EXCEPT AS SHOWN



TYPE 104
SAME AS TYPE 102
EXCEPT AS SHOWN

33359662	01	AB	RUBBER COMPOUND GRAY	104	N/A	0.415
33359660	01	AA	RUBBER COMPOUND RED	103	RTK-031 (3.3)	0.268
33359661	01	AA	RUBBER COMPOUND WHITE	102	RG-174 (2.8)	0.284
33359659	02	AA	RUBBER COMPOUND GREEN	101	RG-58 (4.95)	0.166
PART NO	REV	N/P	MATERIAL SPECIFICATION AND COLOR	TYPE	CABLE SIZE OD	VOLUME

12
SEALING RIBS MUST BE FREE OF
SINKS, VOIDS, KNIT LINES AND
FLASH, ALL AROUND PART.



TYPE 101

NOTES

- UNLESS OTHERWISE SPECIFIED AND/OR INDICATED:

DIMENSIONS ARE TO FACE OF VIEW SHOWN AND
AUTOMATICALLY ROUNDED BY COMPUTER FOR INSPECTION
(SEE MATH MODEL FOR PRECISE DIMENSIONS). FOR ALL
OTHER DIMENSIONS NOT SHOWN BUT REQUIRED FOR TOOL
BUILD, SEE MATH MODEL FOR PRECISE TOOL PATH DATA.

- PARTS ARE TO BE PACKAGED IN SEALED PLASTIC BAGS. GROSS
WEIGHT INCLUDING CARTON IS NOT TO EXCEED 5 POUNDS.

SYMBOL DEFINITION

A DIMENSION WITHOUT AN INSPECTION REPORT SYMBOL
DOES NOT REQUIRE INSPECTION. IT MAY BE
CONTROLLED ON THE INDIVIDUAL COMPONENT DRAWING.

TOTAL NO OF
INSPECTIONS
REQUIRED

19

LAST NO.
USED

12

MISSING SYMBOLS

NO MISSING SYMBOL
NUMBER

DWG STATUS					ZONE	REVISION HISTORY	AUTH	DR	APVD	APVD
DATE	STG	REV	N/P	CHG						
13JL16	R	01	-	-		ALL PARTS - RELEASED	433660	TAI	TAI	DIW
15JA18	R	02	-	-		33359659 - MAT'L GENERIC CALLOUT WAS RUBBER COMPOUND ORANGE	438757	JVM	JVM	DIW
03JN19	R	03	-	-		33359659 & 33359661-62 - UPDATED PART AVAILABILITY	443483	LVD	RNL	RNL
05AU19	R	04	-	-		33359660 - UPDATED PART AVAILABILITY	444166	RNL	RNL	CEL
15NO19	R	05	-	-		33359662 - CORRECTED COLOR TO GRAY	550553	AHY	AHY	RNL

DWG STATUS					ZONE	REVISION HISTORY	AUTH	DR	APVD	APVD
DATE	STG	REV	N/P	CHG						
13JL16	R	01	-	-		ALL PARTS - RELEASED	433660	TAI	TAI	DIW
15JA18	R	02	-	-		33359659 - MAT'L GENERIC CALLOUT WAS RUBBER COMPOUND ORANGE	438757	JVM	JVM	DIW
03JN19	R	03	-	-		33359659 & 33359661-62 - UPDATED PART AVAILABILITY	443483	LVD	RNL	RNL
05AU19	R	04	-	-		33359660 - UPDATED PART AVAILABILITY	444166	RNL	RNL	CEL
15NO19	R	05	-	-		33359662 - CORRECTED COLOR TO GRAY	550553	AHY	AHY	RNL

• APTIV •

CONNECTION SYSTEMS

WARREN, OH
COPYRIGHT 2016 APTIV. ALL RIGHTS RESERVED.

THIS DRAWING IS THE PROPERTY OF APTIV AND CONTAINS APTIV
CONFIDENTIAL INFORMATION. THE REPRODUCTION, DISTRIBUTION AND
UTILIZATION OF THIS DOCUMENT OR ITS RELATED CAD DATA, AS WELL
AS COMMUNICATION OF ANY CONTENT TO OTHERS, WITHOUT EXPRESS
AUTHORIZATION, IS PROHIBITED.

DR		DATE	
APVD1	T. ILER	13JL16	
APVD2	T. ILER	13JL16	
APVD3	D. WAKEFORD	13JL16	
APVD4			
APVD5			
SUBSTANCES OF CONCERN AND RECYCLED CONTENT PER APTIV 10949001			
MATERIAL SEE CHART			
DRAWING NAME TAXI SEAL CBL 1W			
DRAWING NUMBER 33359663			
SIZE A1	SCALE 8:1	FRAME NO 1 OF 1	SHEET NO 1 OF 1
STG R	REV 05	N/P -	

A LINE DRAWN THROUGH A PART NUMBER INDICATES THAT PHYSICAL PARTS ARE NOT AVAILABLE FOR ORDERING.	
PART NUMBERS THAT DO NOT HAVE A LINE PRESENT INDICATE THAT PHYSICAL PARTS ARE AVAILABLE FOR ORDERING.	
CONTACT APTIV SALES TO ASSURE AVAILABILITY OF PARTS.	
DWG TYPE PART DRAWING	
STYLE	
VOLUME (CM ³)	DISTR CODE D
UNLESS OTHERWISE SPECIFIED THIS DOCUMENT IS IN ACCORDANCE WITH ASME Y14.5M-1994 AS AMENDED BY THE QM GLOBAL DIMENSIONING AND TOLERANCING ADDENDUM-2001. SEPARATE PATTERNS OF FEATURES MAY BE GAGED SEPARATELY REGARDLESS OF DATUM REFERENCES.	
ALL DIMENSIONS ARE IN MILLIMETERS	
REFERENCE	
THIRD ANGLE PROJECTION	DO NOT SCALE USE MATH DATA

DIMENSIONAL RANGE (MM)										CHART	E1
FROM	> 0	> 20	> 30	> 70	> 100	> 150	> 200	> 250	> 300		
TO	20	30	70	100	150	200	250	300	400		
TOLERANCE UNLESS OTHERWISE SPECIFIED											
	±0.15	±0.2	±0.3	±0.4	±0.5	±0.6	±0.8	±1	±1.2		
ANGULAR TOLERANCE ±2°											

2	PROCESS SENSITIVE DIMENSION
DIMENSIONS ENCLOSED IN () INDICATE REFERENCE DIMENSIONS AND NO TOLERANCE LIMITS ARE ESTABLISHED	

Mouser Electronics

Authorized Distributor

Click to View Pricing, Inventory, Delivery & Lifecycle Information:

[Aptiv:](#)

[33359660](#)