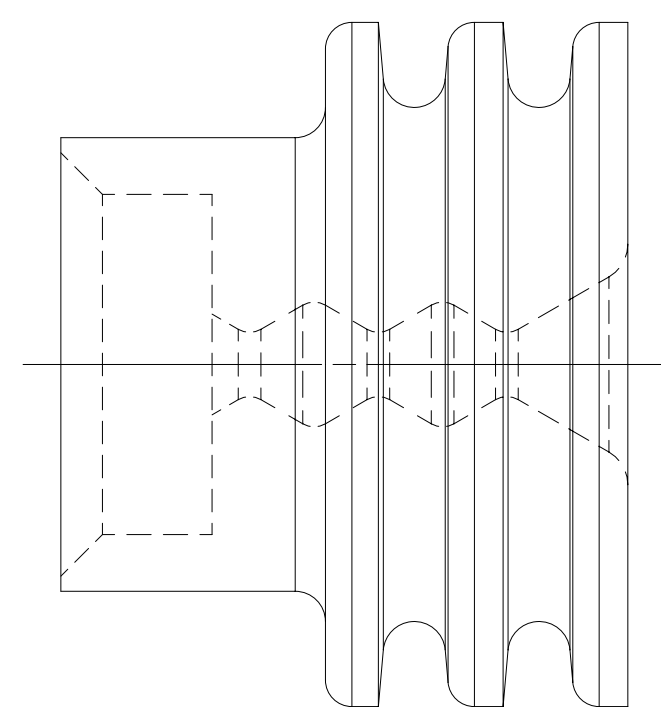


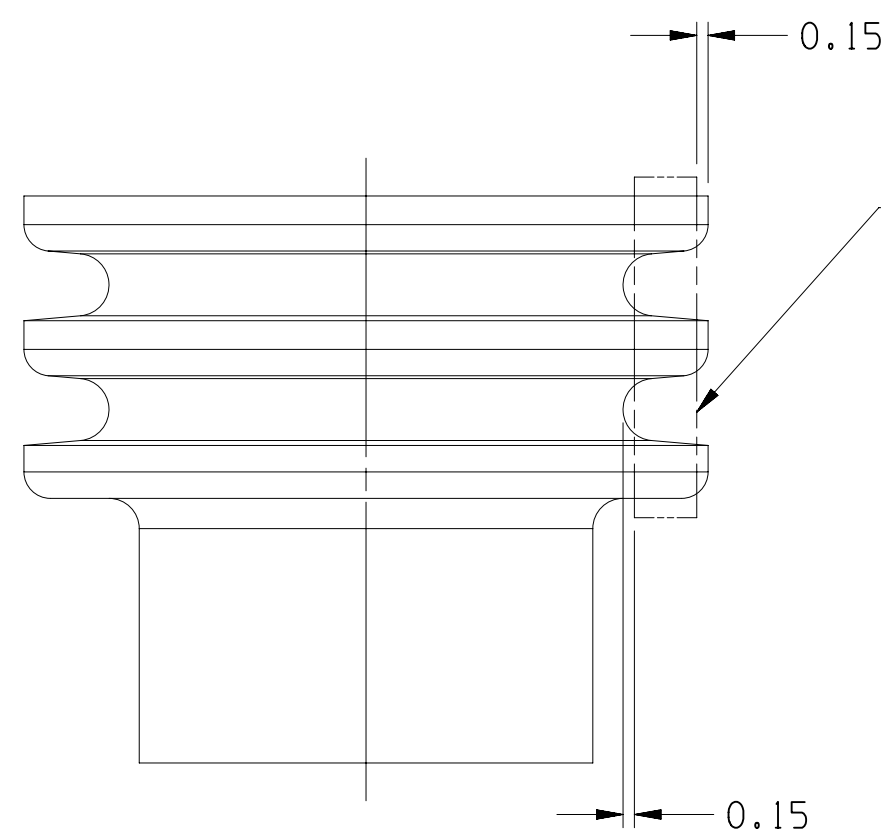
OPTIONAL CONSTRUCTION 1  
(ANTI-STICK RING)



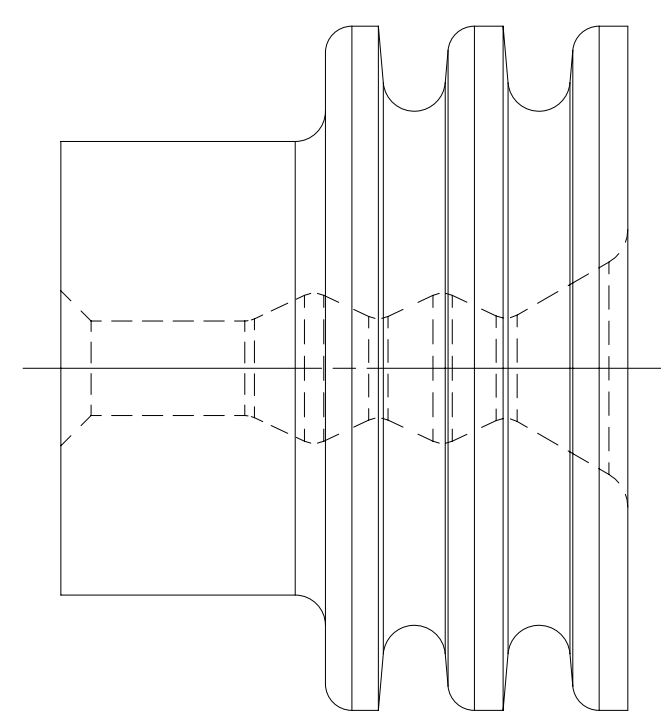
OPTIONAL CONSTRUCTION 2  
THIS IS THE PREFERRED CONSTRUCTION FOR NEW  
TOOL BUILDS  
(ANTI-STICK RING)



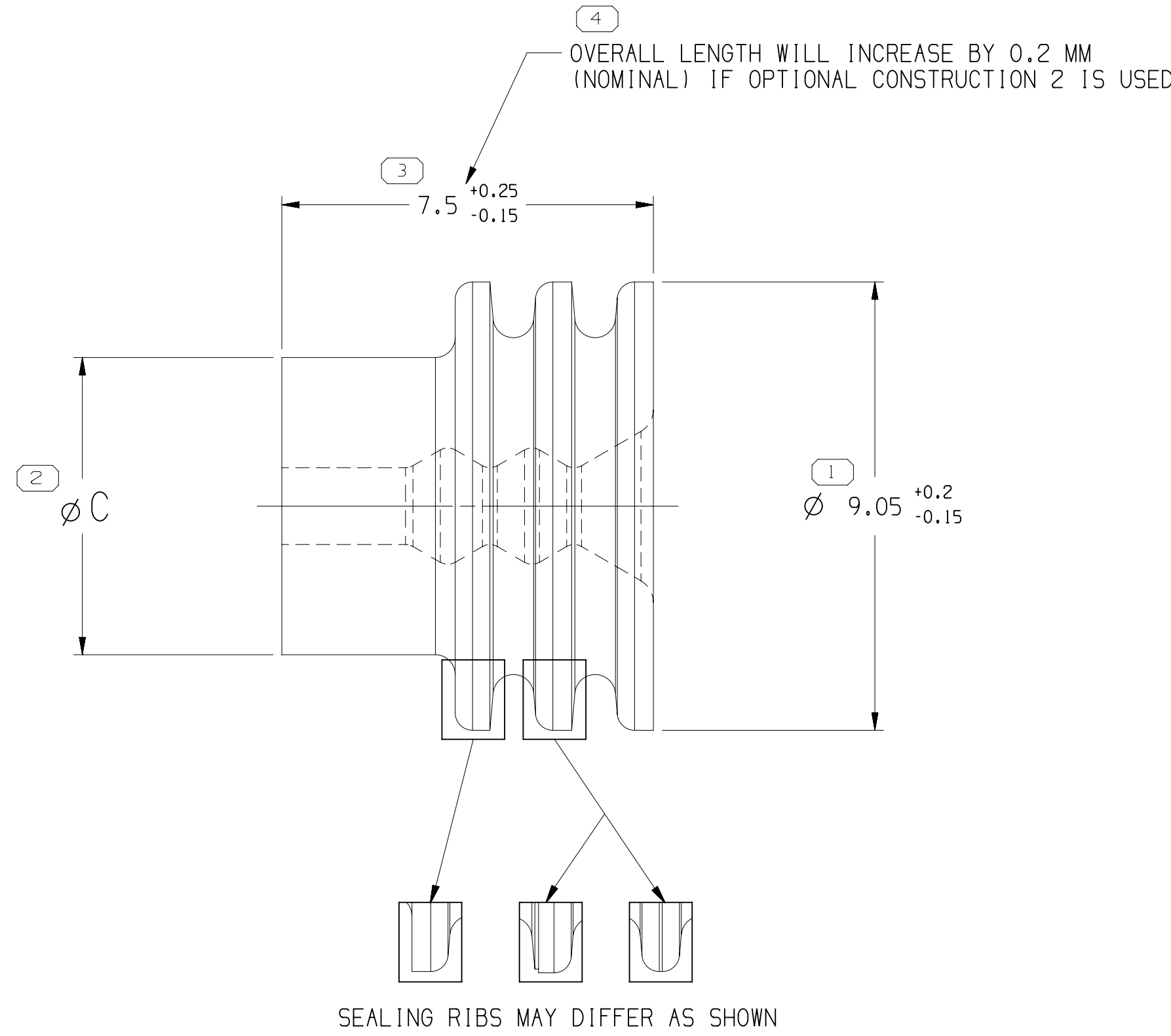
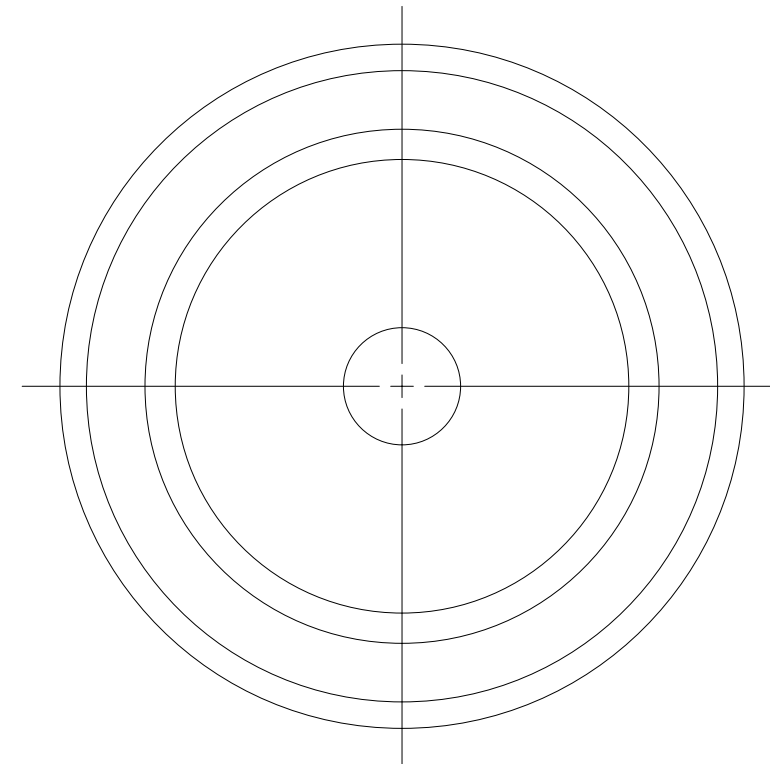
TYPE 202  
SAME AS TYPE 201  
EXCEPT AS SHOWN



SEALING RIBS MUST BE FREE OF  
SINKS, VOIDS, KNIT LINES AND  
FLASH IN THE AREA SHOWN  
ALL AROUND PART.  
SEE VPS A-121 FOR ADDITIONAL  
INFORMATION.



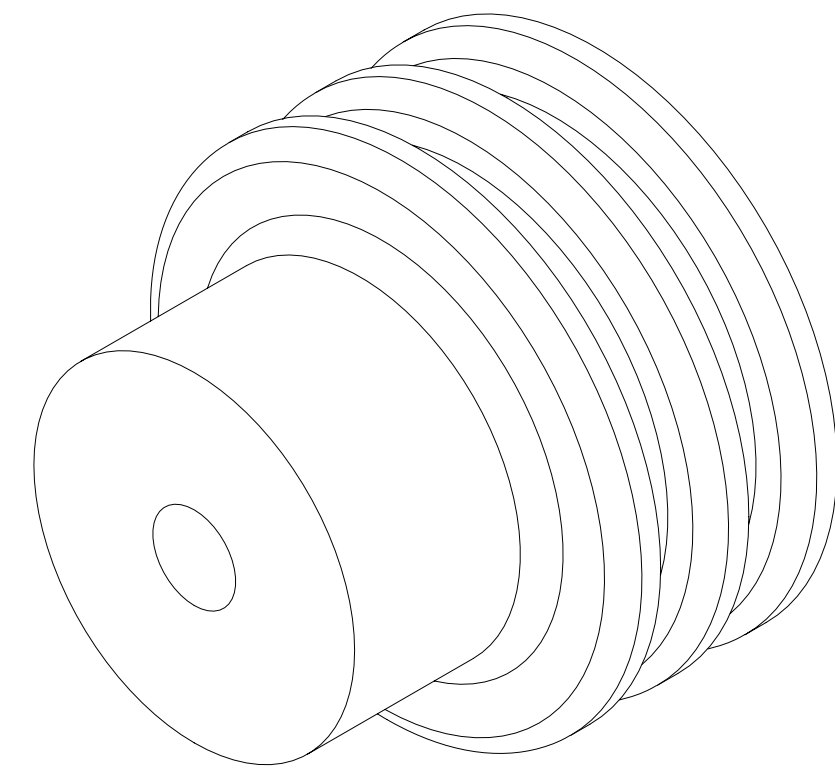
TYPE 203  
SAME AS TYPE 201  
EXCEPT AS SHOWN



TYPE 201

PART NO	REV	N/P	MATERIAL SPECIFICATION AND COLOR	TYPE	CABLE O.D. ±0.05 SEE NOTE #4	CAVITY ID	EQUIVALENT CABLE SEAL	VOLUME	REPLACED BY
15324992	02	AA	SILICONE METHYL/VINYL RED-BROWN	203	1.7-1.29	6	8.5	-	0.299
15324991	01	AG	SILICONE METHYL/VINYL YELLOW	203	2.15-1.6	6	8.5	12052930	0.292
15324990	01	AG	SILICONE METHYL/VINYL PURPLE	201	4.5-3.61	6	8.5	12048443	0.235
15324989	01	AG	SILICONE METHYL/VINYL RED	201	3.76-2.81	6	8.5	12048442	0.264
15324988	01	AG	SILICONE METHYL/VINYL WHITE	201	2.85-2.01	6	8.5	12048441	0.287
15324987	01	AG	SILICONE METHYL/VINYL ORANGE	201	5.16-4.4	6.5	8.5	12034170	0.223
12162067	A9	-	SILICONE METHYL/VINYL PINK	203	1.7-1.29	6	8.5	-	0.299
*12110210	B4	-	SILICONE METHYL/VINYL GREEN	202	2.12-1.67	6.5	8.5	-	0.267
12034170	B7	-	SILICONE METHYL/VINYL ORANGE	201	5.16-4.4	6.5	8.5	15324987	0.223
12052930	05	AF	SILICONE METHYL/VINYL YELLOW	203	2.15-1.6	6	8.5	15324991	0.292
12048312	A3	-	SILICONE METHYL/VINYL BLUE	201	4.21-3.5	6.5	8.5	-	0.257
12048443	03	AE	SILICONE METHYL/VINYL PURPLE	201	4.5-3.61	6	8.5	15324990	0.235
12048442	03	AE	SILICONE METHYL/VINYL RED	201	3.76-2.81	6	8.5	15324989	0.264
12048441	03	AE	SILICONE METHYL/VINYL WHITE	201	2.85-2.01	6	8.5	15324988	0.287

SYMBOL DEFINITION		MISSING SYMBOLS	
A DIMENSION WITHOUT AN INSPECTION REPORT SYMBOL DOES NOT REQUIRE INSPECTION. IT MAY BE CONTROLLED ON THE INDIVIDUAL COMPONENT DRAWING.	TOTAL NO OF INSPECTIONS REQUIRED	5	NO MISSING SYMBOL NUMBER
	LAST NO. USED		



#### NOTES

- UNLESS OTHERWISE SPECIFIED AND/OR INDICATED:  
DIMENSIONS ARE TO FACE OF VIEW SHOWN AND  
AUTOMATICALLY ROUNDED BY COMPUTER FOR INSPECTION.  
(SEE MATH MODEL FOR PRECISE DIMENSIONS.) FOR ALL  
OTHER DIMENSIONS NOT SHOWN BUT REQUIRED FOR TOOL  
BUILD, SEE MATH MODEL FOR PRECISE TOOL PATH DATA.
- PARTS ARE TO BE PACKAGED IN SEALED PLASTIC BAGS. GROSS  
WEIGHT INCLUDING CARTON IS NOT TO EXCEED 34 POUNDS.
- DESIGNED AS A PUSH ON SEAL. SEAL SLIDES OVER INSULATION  
WINGS. A TERMINAL CANNOT BE CRIMPED OVER THIS SEAL.
- TO IMPROVE SEAL PROCESSING ON SLIPPERY OR SMOOTH CABLE  
INSULATION, THE APPLICATION ENGINEER MAY SPECIFY THE  
NEXT SMALLER SEAL SIZE P.N. IN PLACE OF THE INDICATED  
SEAL FOR THE "CABLE O.D." LISTED IN THE CHART.
- 12110210 CAN BE REPLACED BY ANY SEAL  
ON THIS PAGE IN CONJUNCTION WITH 12124471 OR 12124598  
TERMINAL DEPENDING ON CABLE OD.
- THIS PRODUCT IS NOT CATEGORIZED AS AN APPEARANCE ITEM. MINOR  
IMPERFECTIONS INCLUDING, BUT NOT LIMITED TO, FLOW MARKS, COLOR  
BLEMISHES, GATE VESTIGE, AND SOFT FLASH THAT DO NOT AFFECT THE  
FIT, FORM, OR FUNCTION OF THE PART ARE PERMISSIBLE PER EANP\_4-3-CS-01.EN.
- SEE 12010295 SHEET 6 FOR MYLAR ASSEMBLY INFORMATION.
- CORPORATE BRAND TO BE APPLIED TO PRODUCT DESIGN PER  
THE LATEST REVISION OF ESD S1085201.

DIMENSIONAL RANGE (MM)		CHART	
FROM	TO	FROM	TO
0	20	20	30
20	30	30	40
30	40	40	50
40	50	50	60
50	60	60	70
60	70	70	80
70	80	80	90
80	90	90	100
90	100	100	110
100	110	110	120
110	120	120	130
120	130	130	140
130	140	140	150
140	150	150	160
150	160	160	170
160	170	170	180
170	180	180	190
180	190	190	200
190	200	200	210
200	210	210	220
210	220	220	230
220	230	230	240
230	240	240	250
240	250	250	260
250	260	260	270
260	270	270	280
270	280	280	290
280	290	290	300
290	300	300	310
300	310	310	320
310	320	320	330
320	330	330	340
330	340	340	350
340	350	350	360
350	360	360	370
360	370	370	380
370	380	380	390
380	390	390	400

A LINE DRAWN THROUGH A PART NUMBER INDICATES THAT PHYSICAL PARTS ARE NOT AVAILABLE FOR ORDERING.		B PART NUMBERS THAT DO NOT HAVE A LINE PRESENT INDICATE THAT PHYSICAL PARTS ARE AVAILABLE FOR ORDERING.	
PART NUMBERS THAT DO NOT HAVE A LINE PRESENT INDICATE THAT PHYSICAL PARTS ARE AVAILABLE FOR ORDERING.		CONTACT APTIV SALES TO ASSURE AVAILABILITY OF PARTS.	
DMS TYPE		PART DRAWING	
STYLE			
VOLUME (CM) SEE CHART		DISTR CODE D	
UNLESS OTHERWISE SPECIFIED			
THIS DOCUMENT IS IN ACCORDANCE WITH ASME Y14.5M-1994 AS MODIFIED BY THE GM GLOBAL DIMENSIONING AND TOLERANCING ADDENDUM-2003. SEPARATE PATTERNING OF FEATURES MAY BE ORDERED SEPARATELY REGARDLESS OF DATUM REFERENCES.			
ALL DIMENSIONS ARE IN MILLIMETERS			
REFERENCE			
THIRD ANGLE PROJECTION		DO NOT SCALE	
USE MATH DATA		NX	

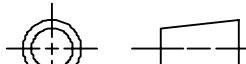


<div>•APTIV•</div> <div>CONNECTION SYSTEMS</div> <div>WHIRLED, OH</div> <div>COPYRIGHT 1989 APTIV, ALL RIGHTS RESERVED.</div> <div>THIS DRAWING IS THE PROPERTY OF APTIV AND CONTAINS APTIV CONFIDENTIAL INFORMATION. THE REPRODUCTION, DISTRIBUTION AND UTILIZATION OF THIS DOCUMENT OR ITS RELATED CAD FILES, AS WELL AS COMMUNICATION OF ANY CONTENT TO OTHERS, BY ANY MEANS ELECTRONIC OR MECHANICAL, IS PROHIBITED.</div>											
								DATE			
DW											
APV001 J. J. HOUGELMAN								13JA89			
APV002 T. MUDREY								26JA89			
APV003 A. HERMANN								31JA89			
APV004											
APV005											
SUBSTANCES OF CONCERN AND RECYCLED CONTENT PER APTIV 10949001											
SEE CHART											
DRAWING NAME											
TAXI SEAL CBL 1W M/W											
DRAWING NUMBER											
12010295											
SIZE		SCALE		FRAME NO.		SHEET NO.		STO		REV	
A0		1:1		1 OF 2		2 OF		R		14	

S	DWG STATUS				ZONE	REVISION HISTORY	AUTH	DR	APV	S
	DATE	STG	REV	N/P						
30M099	R	001	-	-	-	ALL PARTS - REDRAWN TO PD: 15324987-92 RELEASED	990005	JLZ	GMC	RH
07N000	R	002	-	-	-	15324987-92 - REVISED	202978	JLZ	EAR	JH
15MR04	R	03	-	-	-	12052930, 12048441, 12048442 & 12048443 PER NIN ENO B0L15, ALL PARTS - UPDATED MATERIAL SPEC	251701	RH	RH	M
17N004	-	04	-	-	-	12048441 THRU 12048443 & 12052930 - REVISED DRAWING CHART	261371	JS	JS	M
01FE05	R	05	-	-	-	REVISED TOLERANCE	263812	WM	MM	M
09MR06	R	06	-	-	-	15324987-92 - UPDATED PDM ATTRIBUTES	276506	JBD	AUG	JS
26MY06	R	07	-	-	-	REMOVED TYPES 204, 205 & 206 AND OPTIONAL CONSTRUCTION VIEWS; ALL ACTIVE PARTS 7.5 +0/-0.15 WAS 7.5 +0.15, 9.05 +0.2/-0.15 WAS 9.05 +0.15; 12048433, 12052452-53, 12052931, 12050703, 12162068, 12048441-43, 12052930, 12034170 & 12162067 RESTRICTED; 15324987-90 & 15324991-92 - WERE TYPE 204 & 206, UPDATED MAT'L SPEC AND ADDED ALTERNATE MAT'L SPEC	281060	JPH	JVM	M
17AU06	R	08	-	-	-	15324992 - OBSOLETE	283517	CCV	AUG	M
030C06	R	09	-	-	-	ALL ACTIVE PARTS - ADDED SEALING RIBS LABEL, OVERALL LENGTH LABEL, SEALING RIBS VIEWS & NOTE, ANTI-STICK RING OPTIONAL CONSTRUCTION VIEWS AND DIMS (2 PLCS); 12162067-68 - WERE RESTRICTED	285210	JBD	FRG	M
24JL09	R	10	-	-	-	ALL PARTS - ADDED VOLUME COLUMN AND UPDATED MATERIAL CALLOUTS	408462	ECB	AUG	M
15JN10	R	11	-	-	-	12048433, 12052452-53, 12052931, 12050703, 12124843 & 12162068 - MOVED TO SHT 6; 12048441-43 & 12052930 - OBSOLETE AND ADDED "REPLACED BY" COLUMN ON CHART	411067	AGM	JAA	M
20SE18	R	12	-	-	-	15324992 - RE-INSTATED ADDING ANTI-STICK RING AND UPDATED MAT'L CALLOUT	441097	LVD	JAA	VR
08AU19	R	13	-	-	-	12162067 - OBSOLETE AND ADDED "REPLACED BY" INFO	444186	DAV	EVV	CF
05OC21	R	14	-	-	-	ALL ACTIVE PARTS - REVISED "TO IMPROVE SEAL" NOTE	555461	GDH	JAA	AO

A		B				
INDICATES LINE DRAWN THROUGH A PART NUMBER INDICATES THAT PHYSICAL PARTS ARE NOT AVAILABLE FOR ORDERING.	PART NUMBERS THAT DO NOT HAVE A LINE PRESENT INDICATE THAT PHYSICAL PARTS ARE AVAILABLE FOR ORDERING.	CONTACT APTIV SALES TO ASSURE AVAILABILITY OF PARTS.	DMS TYPE			
		STYLE		PART DRAWING		
		VOLUME (CM)		DISTR CODE		
		SEE CHART		D		
		UNLESS OTHERWISE SPECIFIED		THIS DOCUMENT IS IN ACCORDANCE WITH ASME Y14.5M-1994 AS MODIFIED BY THE GM GLOBAL DIMENSIONING AND TOLERANCING ADDENDUM-2003. SEPARATE PATTERNING OF FEATURES MAY BE ORDERED SEPARATELY REGARDLESS OF DATUM REFERENCES.		
		ALL DIMENSIONS ARE IN MILLIMETERS		REFERENCE		
		THIRD ANGLE PROJECTION		DO NOT SCALE		
		USE MATH DATA		NX		

A LINE DRAWN THROUGH A PART NUMBER INDICATES THAT PHYSICAL PARTS ARE NOT AVAILABLE FOR ORDERING.	
PART NUMBERS THAT DO NOT HAVE A LINE PRESENT INDICATE THAT PHYSICAL PARTS ARE AVAILABLE FOR ORDERING.	
CONTACT APTIV SALES TO ASSURE AVAILABILITY OF PARTS.	
DMS TYPE	
STYLE	
PART DRAWING	
VOLUME (CM)	DISTR CODE
SEE CHART	D
UNLESS OTHERWISE SPECIFIED	

CONNECTION SYSTEMS	
WARREN, OH	
COPYRIGHT 1989 APTIV. ALL RIGHTS RESERVED.	
THIS DRAWING IS THE PROPERTY OF APTIV AND CONTAINS APTIV CONFIDENTIAL INFORMATION. THE REPRODUCTION, DISTRIBUTION AND UTILIZATION OF THIS DOCUMENT OR ITS RELATED DATA, AS WELL AS COMMUNICATION OF ANY CONTENT TO OTHERS, WITHOUT EXPRESS AUTHORIZATION, IS PROHIBITED.	
DR	
APVD1 J. HOUGELMAN	13JAB9
APVD2 T. MUDREY	26JAB9
APVD3 A. HERMANN	31JAB9
APVD4	

<p>THIS DOCUMENT IS IN ACCORDANCE WITH ASME Y14.5M-1994 AS MODIFIED BY THE GM GLOBAL DIMENSIONING AND TOLERANCING ADDENDUM-2003. SEPARATE PATTERNING OF FEATURES MAY BE ORDERED SEPARATELY REGARDLESS OF DATUM REFERENCES.</p> <p>ALL DIMENSIONS ARE IN MILLIMETERS</p> <p>REFERENCE</p> <p>THIRD ANGLE PROJECTION</p>  <p>DO NOT SCALE</p>   <p>USE MATH DATA</p>		APPROVES		SUBSTANCES OF CONCERN AND RECYCLED CONTENT PER APTIV 10749001							
		MATERIAL SEE CHART									
		DRAWING NAME									
				TAXI SEAL CBL 1W M/P							
		DRAWING NUMBER		12010295							
SIZE		SCALE		FRAME NO		SHEET NO		REV		N	
A0		10:1		1 OF 2		2 OF		14		-	
3		2				1					

A		B			
INDICATES LINE DRAWN THROUGH A PART NUMBER INDICATES THAT PHYSICAL PARTS ARE NOT AVAILABLE FOR ORDERING.	PART NUMBERS THAT DO NOT HAVE A LINE PRESENT INDICATE THAT PHYSICAL PARTS ARE AVAILABLE FOR ORDERING.	CONTACT APTIV SALES TO ASSURE AVAILABILITY OF PARTS.	DMS TYPE		
STYLE		PART DRAWING			
VOLUME (CM)		DISTR CODE			
SEE CHART		D			
UNLESS OTHERWISE SPECIFIED		THIS DOCUMENT IS IN ACCORDANCE WITH ASME Y14.5M-1994 AS MODIFIED BY THE GM GLOBAL DIMENSIONING AND TOLERANCING ADDENDUM-2003. SEPARATE PATTERNING OF FEATURES MAY BE ORDERED SEPARATELY REGARDLESS OF DATUM REFERENCES.			
ALL DIMENSIONS ARE IN MILLIMETERS		REFERENCE			
THIRD ANGLE PROJECTION		DO NOT SCALE			
USE MATH DATA		NX			

A		B			
INDICATES LINE DRAWN THROUGH A PART NUMBER INDICATES THAT PHYSICAL PARTS ARE NOT AVAILABLE FOR ORDERING.	PART NUMBERS THAT DO NOT HAVE A LINE PRESENT INDICATE THAT PHYSICAL PARTS ARE AVAILABLE FOR ORDERING.	CONTACT APTIV SALES TO ASSURE AVAILABILITY OF PARTS.	DMS TYPE		
STYLE		PART DRAWING			
VOLUME (CM)		DISTR CODE			
SEE CHART		D			
UNLESS OTHERWISE SPECIFIED		THIS DOCUMENT IS IN ACCORDANCE WITH ASME Y14.5M-1994 AS MODIFIED BY THE GM GLOBAL DIMENSIONING AND TOLERANCING ADDENDUM-2003. SEPARATE PATTERNING OF FEATURES MAY BE ORDERED SEPARATELY REGARDLESS OF DATUM REFERENCES.			
ALL DIMENSIONS ARE IN MILLIMETERS		REFERENCE			
THIRD ANGLE PROJECTION		DO NOT SCALE			
USE MATH DATA		NX			

A		B			
INDICATES LINE DRAWN THROUGH A PART NUMBER INDICATES THAT PHYSICAL PARTS ARE NOT AVAILABLE FOR ORDERING.	PART NUMBERS THAT DO NOT HAVE A LINE PRESENT INDICATE THAT PHYSICAL PARTS ARE AVAILABLE FOR ORDERING.	CONTACT APTIV SALES TO ASSURE AVAILABILITY OF PARTS.	DMS TYPE		
STYLE		PART DRAWING			
VOLUME (CM)		DISTR CODE			
SEE CHART		D			
UNLESS OTHERWISE SPECIFIED		THIS DOCUMENT IS IN ACCORDANCE WITH ASME Y14.5M-1994 AS MODIFIED BY THE GM GLOBAL DIMENSIONING AND TOLERANCING ADDENDUM-2003. SEPARATE PATTERNING OF FEATURES MAY BE ORDERED SEPARATELY REGARDLESS OF DATUM REFERENCES.			
ALL DIMENSIONS ARE IN MILLIMETERS		REFERENCE			
THIRD ANGLE PROJECTION		DO NOT SCALE			
USE MATH DATA		NX			

A		B			
INDICATES LINE DRAWN THROUGH A PART NUMBER INDICATES THAT PHYSICAL PARTS ARE NOT AVAILABLE FOR ORDERING.	PART NUMBERS THAT DO NOT HAVE A LINE PRESENT INDICATE THAT PHYSICAL PARTS ARE AVAILABLE FOR ORDERING.	CONTACT APTIV SALES TO ASSURE AVAILABILITY OF PARTS.	DMS TYPE		
STYLE		PART DRAWING			
VOLUME (CM)		DISTR CODE			
SEE CHART		D			
UNLESS OTHERWISE SPECIFIED		THIS DOCUMENT IS IN ACCORDANCE WITH ASME Y14.5M-1994 AS MODIFIED BY THE GM GLOBAL DIMENSIONING AND TOLERANCING ADDENDUM-2003. SEPARATE PATTERNING OF FEATURES MAY BE ORDERED SEPARATELY REGARDLESS OF DATUM REFERENCES.			
ALL DIMENSIONS ARE IN MILLIMETERS		REFERENCE			
THIRD ANGLE PROJECTION		DO NOT SCALE			
USE MATH DATA		NX			

A		B			
INDICATES LINE DRAWN THROUGH A PART NUMBER INDICATES THAT PHYSICAL PARTS ARE NOT AVAILABLE FOR ORDERING.	PART NUMBERS THAT DO NOT HAVE A LINE PRESENT INDICATE THAT PHYSICAL PARTS ARE AVAILABLE FOR ORDERING.	CONTACT APTIV SALES TO ASSURE AVAILABILITY OF PARTS.	DMS TYPE		
STYLE		PART DRAWING			
VOLUME (CM)		DISTR CODE			
SEE CHART		D			
UNLESS OTHERWISE SPECIFIED					

# Mouser Electronics

Authorized Distributor

Click to View Pricing, Inventory, Delivery & Lifecycle Information:

[Aptiv:](#)

[15324989](#)