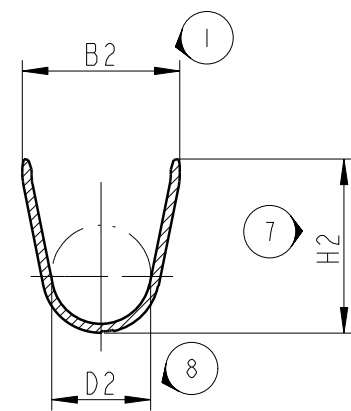


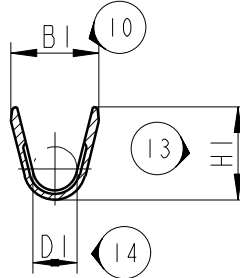
01AA

6 000 20 41 (13647358)	1-3µm Sn	>1.0-1.5	000	2.8	3.0	1.4	4.3	4.8	2.7	6.6	3.0	6 099 39 34	Gelb/Yellow
6 000 20 34 (13609492)	0.8 µm Au	0.50-1.00	3D	2.4	2.6	1.2	4.3	4.8	2.7	6.6	3.0	6 099 39 13	Rot/Red
33405737	1-3µm Sn		3A									6 099 39 28	Grau/Grey
6 000 20 31 (13609029)	1-3µm Sn		00									6 099 39 34	Gelb/Yellow
F427200 (13898605)	0.8 µm Au	>0.22-0.35	2D	1.9	1.85	0.8	4.3	4.6	2.6	6.1	2.5	6 099 39 13	Rot/Red
33405736	1-3µm Sn		2A										
F327200 (13898610)	1-3µm Sn		2A										
Teile Nr. Part no.	Ober- flaeche Surface finish	Crimp- bereich Crimp zone (mm²)	Teile- code Part code	B1 ±0.3	H1 ±0.3	D1 ±0.3	B2 ±0.3	H2 ±0.3	D2 ±0.3	L1 ±0.3	L2 ±0.2	EINZELADERDICHUNG SINGLE WIRE SEAL (EAA) / (SWS)	
				Crimpmasze / Crimp dimension									

A-A



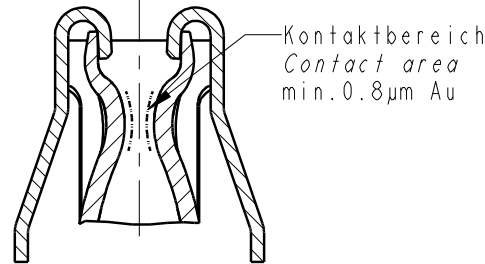
B-B



nur gueltig fuer Goldversionen
only valid for gold versions

X

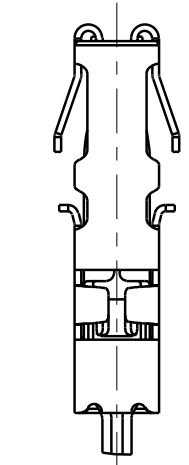
10:1



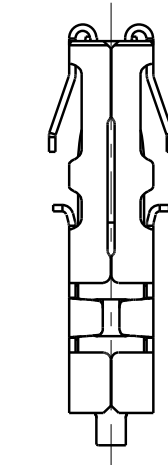
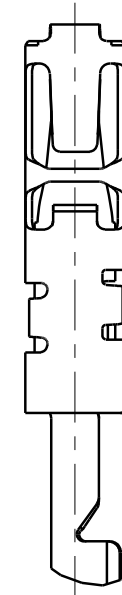
bei Teilennr. / at Part no.
33405736 / 33405737

01AB

Ueberfeder 180° gedreht
ohne Laserschweißpunkte
the Hood is 180° turned
without Laser welding points

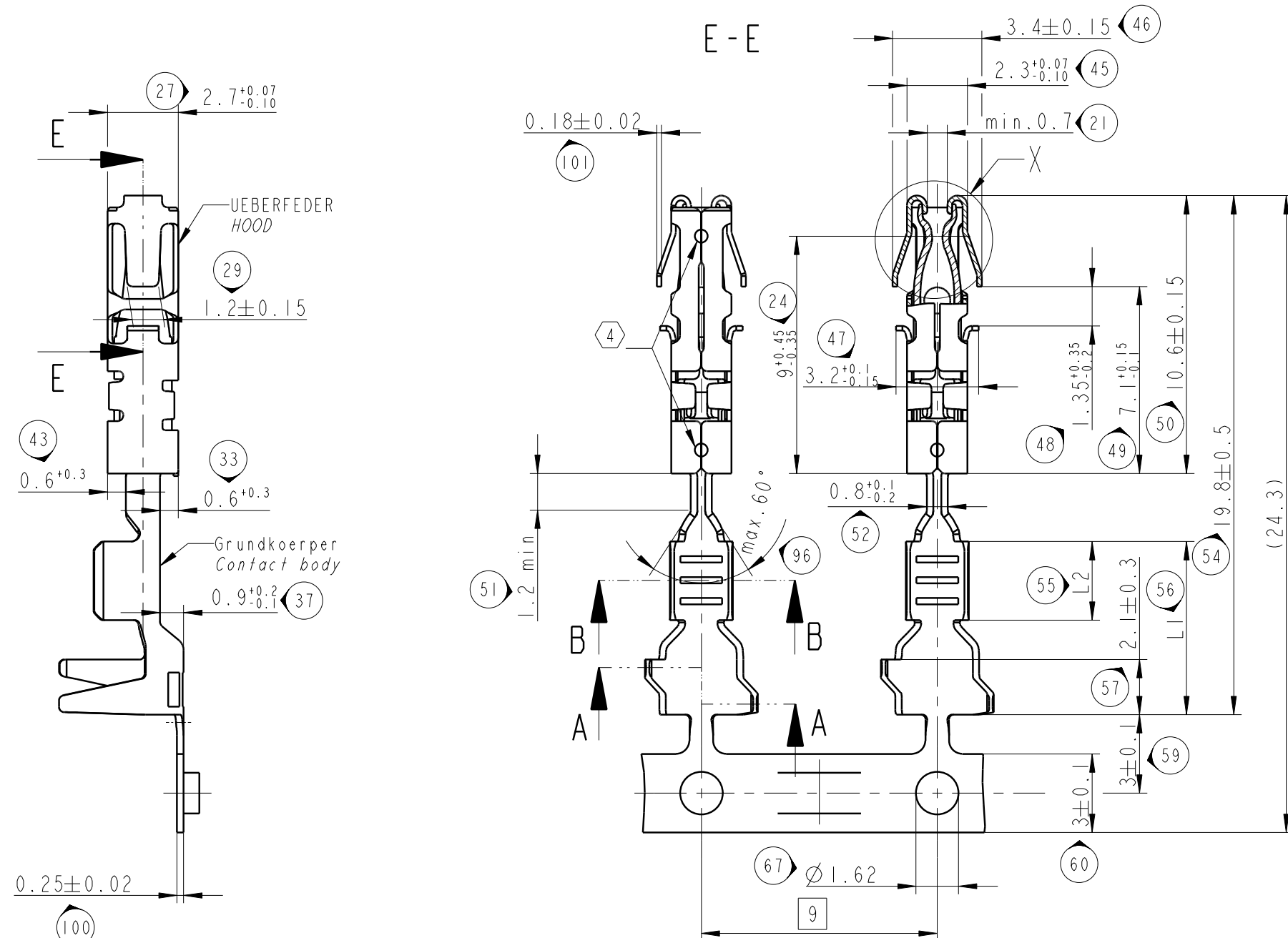


Vorderansicht
front side



Rueckansicht
back side

E-E



(24.3)

(60)

(67)

(9)

(100)

(101)

(102)

(103)

(104)

(105)

(106)

(107)

(108)

(109)

(110)

(111)

(112)

(113)

(114)

(115)

(116)

(117)

(118)

(119)

(120)

(121)

(122)

(123)

(124)

(125)

(126)

(127)

(128)

(129)

(130)

(131)

(132)

(133)

(134)

(135)

(136)

(137)

(138)

(139)

(140)

(141)

(142)

(143)

(144)

(145)

(146)

(147)

(148)

(149)

(150)

(151)

(152)

(153)

(154)

(155)

(156)

(157)

(158)

(159)

(160)

(161)

(162)

(163)

(164)

(165)

(166)

(167)

(168)

(169)

(170)

(171)

(172)

(173)

(174)

(175)

(176)

(177)

(178)

(179)

(180)

(181)

(182)

(183)

(184)

(185)

(186)

(187)

(188)

(189)

(190)

(191)

(192)

(193)

(194)

(195)

(196)

(197)

(198)

(199)

(200)

(201)

(202)

(203)

(204)

(205)

(206)

(207)

(208)

(209)

(210)

(211)

(212)

(213)

(214)

(215)

(216)

(217)

(218)

(219)

(220)

(221)

(222)

(223)

(224)

(225)

(226)

(227)

(228)

(229)

(230)

(231)

(232)

(233)

(234)

(235)

(236)

(237)

(238)

(239)

(240)

(241)

(242)

(243)

(244)

(245)

(246)

(247)

(248)

(249)

(250)

(251)

(252)

(253)

(254)

(255)

(256)

(257)

(258)

(259)

(260)

(261)

(262)

(263)

(264)

(265)

(266)

(267)

(268)

(269)

(270)

(271)

(272)

(273)

(274)

(275)

(276)

(277)

(278)

(279)

(280)

(281)

(282)

(283)

(284)

(285)

(286)

(287)

(288)

(289)

(290)

(291)

(292)

(293)

(294)

(295)

(296)

(297)

(298)

(299)

(300)

(301)

(302)

(303)

(304)

(305)

(306)

(307)

(308)

(309)

(310)

(311)

(312)

(313)

(314)

(315)

(316)

(317)

(318)

(319)

(320)

(321)

(322)

(323)

(324)

(325)

(326)

(327)

(328)

(329)

(330

Mouser Electronics

Authorized Distributor

Click to View Pricing, Inventory, Delivery & Lifecycle Information:

[Aptiv:](#)

[33405737](#)