

		11		10		9		8		7		6			
MVL-TEILE- NR. MVL-PART- NO.		DELPHI TEILE-NR. PART-NO.		ANSCHLUSS- BEREICH CRIMP SIZE (mm ²)	CRIMP- CODE	DRAHTQUER- SCHNITT WIRE SIZE (mm ²)	ISOLATION INSULATION D L (mm) ±0.4	DRAHTCRIMP WIRE CRIMP CH _C CW _C ±0.05	ISOLATIONS CRIMP INSULATIONS CRIMP CH _I ±0.05 CW _I ±0.15	CRIMP-TYPE	LI	MVL-APPLIKATOR MVL-APPLICATOR			
H	6 000 03 11/14	10864924,	15510047	>0.22-0.35	□	0.25	TBD	TBD	TBD	TBD	TBD	TBD	TBD		
	6 000 05 11/14	10763182,	10751588			3.8	1.01±0.03	1.67	2.00±0.05	2.1	L 0.3 ^{+0.2}	6 520 04 10			
	6 000 13 14	33504747													
	6 010 02 11/14	10864932,	13539675												
	6 010 06 11/14	10775249,	10751586												
	6 010 14 14	33504723													
6 010 19 11/14	10866290,	33504724	0.35	1.2-1.4	1.67	1.75±0.05	1.95								
	F088000	33511723													
	F188000	33504748													
	F288000	33504749													
G	6 000 03 31/34	15365811,	13539674	0.5-1.0	□□	0.50	1.4-1.6	1.17 ±0.04	2.07	1.95±0.05	2.30	L UMFASSUNGS- CRIMP WRAP- CRIMP	0.4±0.2	6 520 04 11	
	6 000 05 31/34	15380673,	10751587			4.3	1.17±0.04	2.08	2.15±0.05	2.30					
	6 000 13 34	33504750													
	6 010 02 31/34	10864947,	13665836								AWG20 TXL				1.6-1.8
	6 010 06 31/34	10756897,	10751589												
	6 010 14 34	33504725													
6 010 19 31/34	10863773,	33504726	0.75	1.7-1.9	1.2±0.04	2.08	2.25±0.05	2.35							
	F388000	33511724													
	F488000	33504751													
	F588000	33504752													
	6 000 05 41/44	10769219,	33504753	>1-1.5	□□□	AWG16 TXL	2.05-2.3	1.28±0.05	2.35	2.6 ±0.05	2.70	0.4±0.2	6 520 04 12 Rev. B L		
	6 000 13 44	33504754				4.3	1.33±0.05	2.37	2.75±0.05	2.8					
	6 010 06 41	10769218													
	6 010 19 41/44	33504755,	33504727								1.4			2.2-2.4	
	F688000	33511725													
	F788000	33504756													
F888000	33504757		1.5	2.2-2.4	1.38±0.05	2.37	2.75±0.05	2.8							

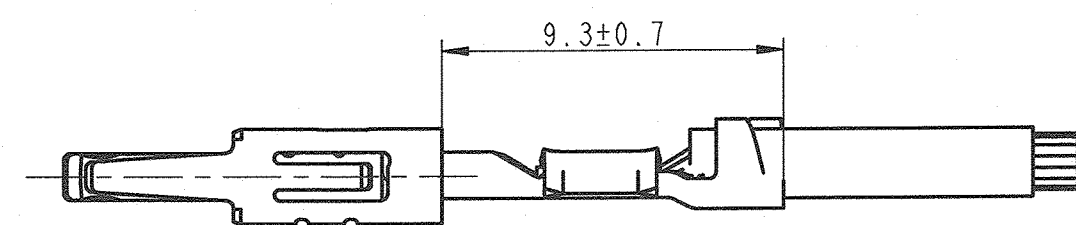


BILD 1: FLACHKONTAKT DCS2-1.5 NORMALE ANWENDUNG
PICTURE 1: FEMALE TERMINAL DCS2-1.5 NORMAL APPLICATION

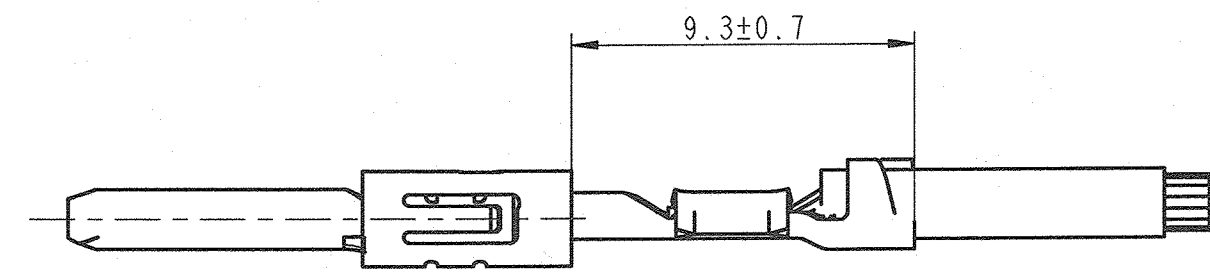
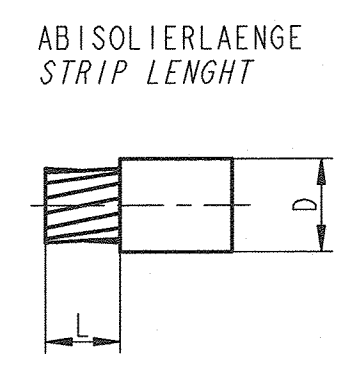
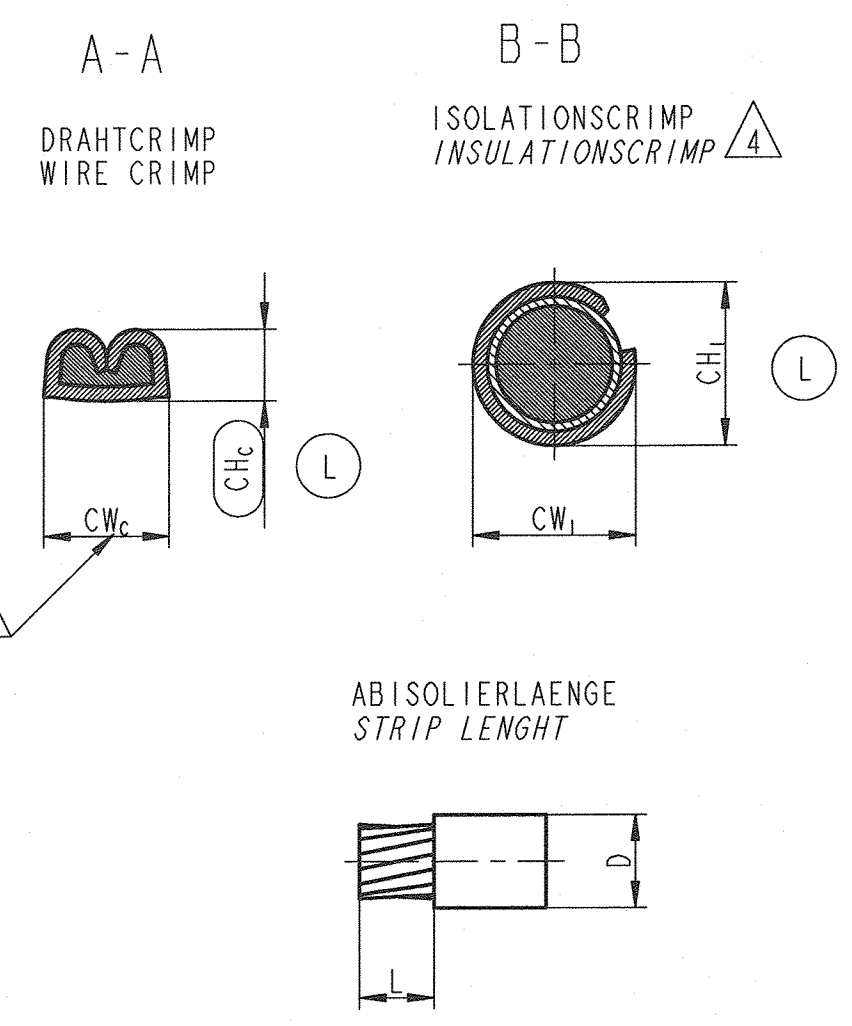
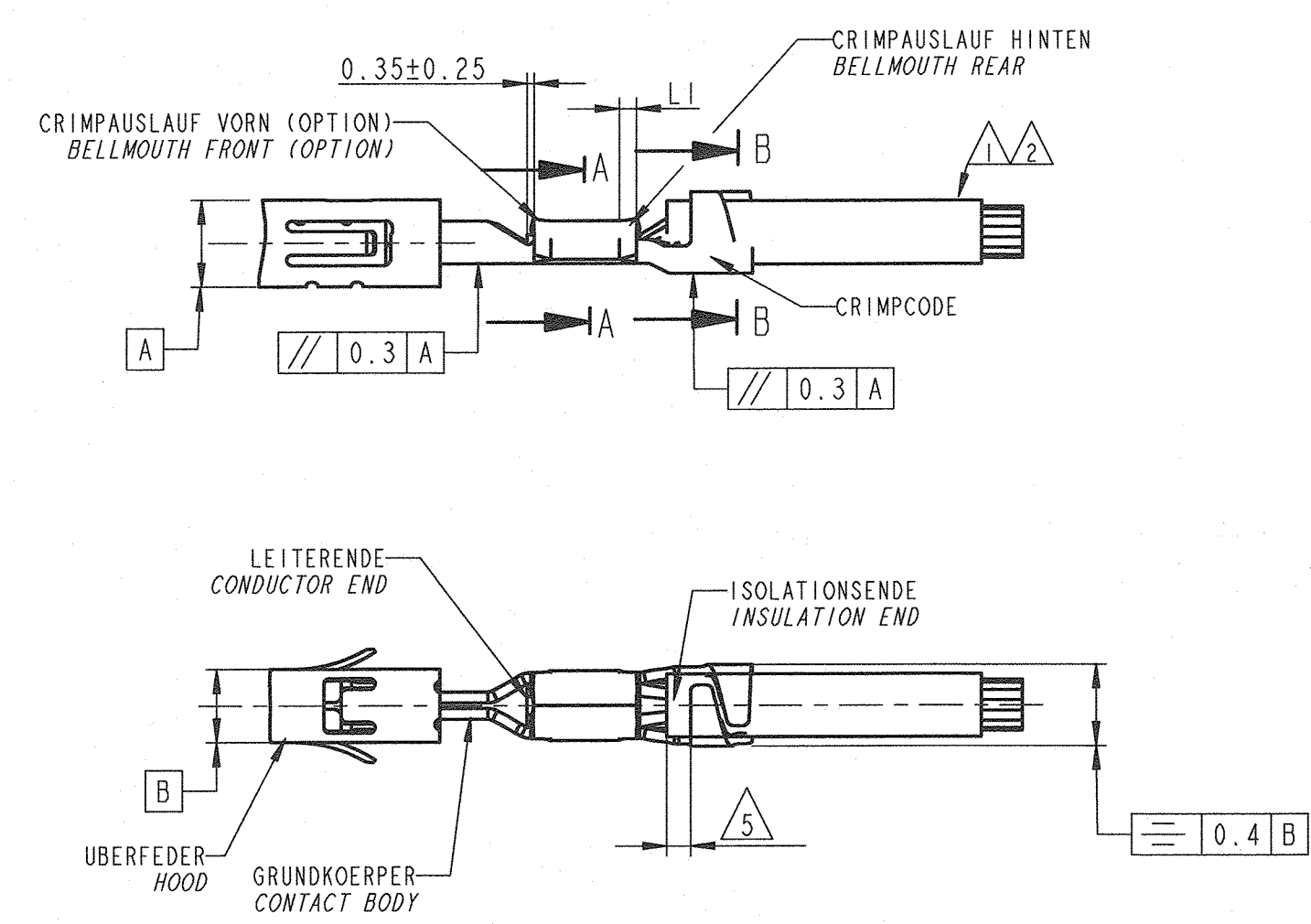


BILD 2: FLACHSTECKER DCS2-1.5 NORMALE ANWENDUNG
PICTURE 2: MALE TERMINAL DCS2-1.5 NORMAL APPLICATION



BEMERKUNGEN / NOTES

1 LEITUNGEN FLR NACH DIN 72551-6, AUSGENOMMEN DIE AWG-LEITUNGEN
WIRE TYPES FLR DIN 72551-6 UNLESS AWG- WIRES/ CABLES

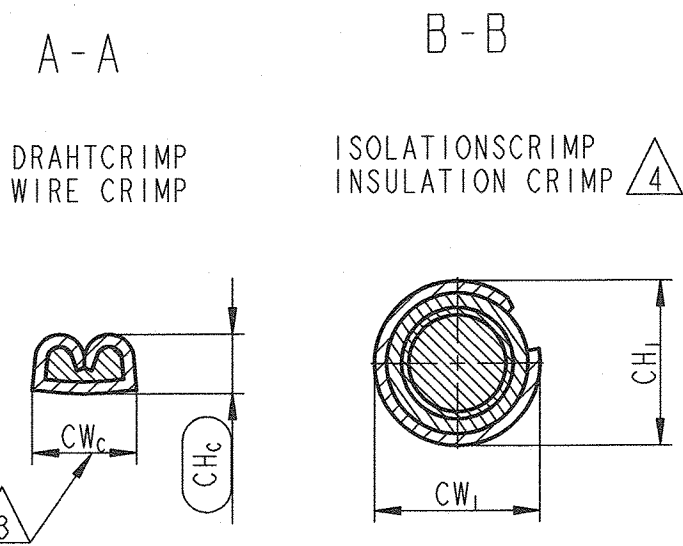
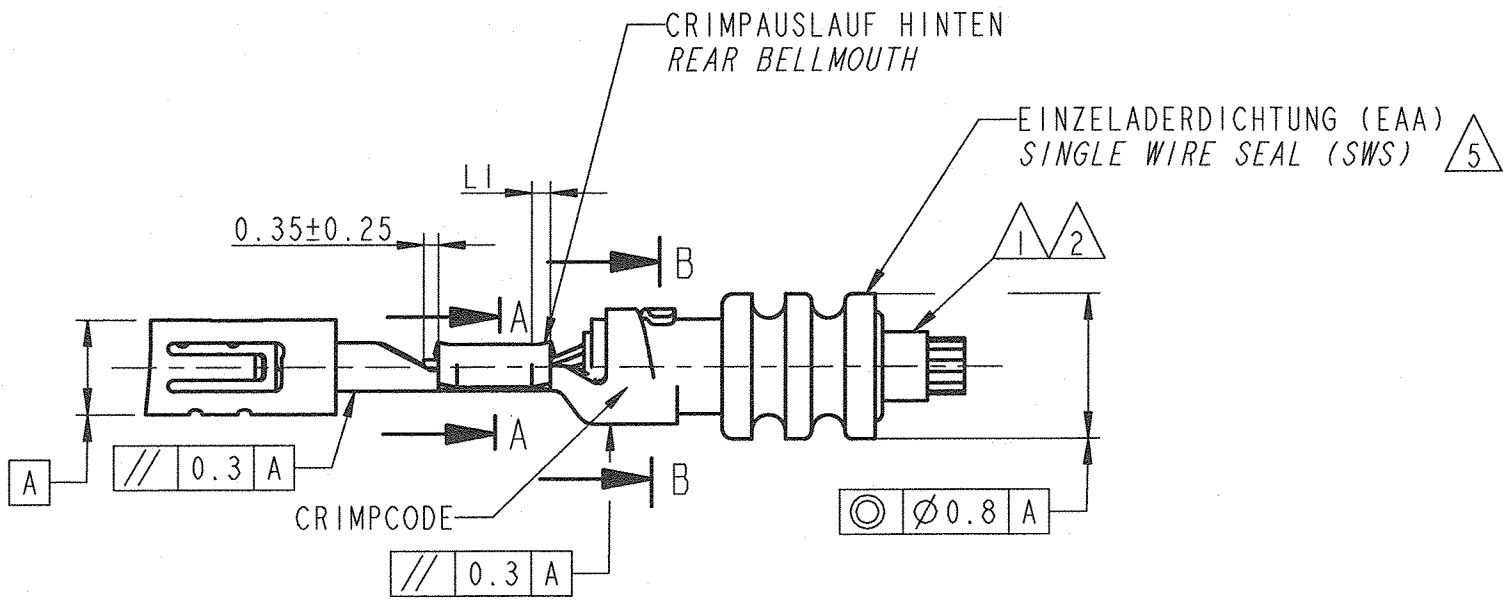
2 AUSREISSKRAFT DES LEITERS AUS DEM DRAHTCRIMP SIEHE: 1 EXTRACTION FORCE OF WIRE OUT THE WIRE CRIMP SEE: DIN EN 60 352-2.

3 CW_C EFFEKTIVE CRIMPBREITE DRAHTCRIMP / EFFECTIVE CRIMP WIDTH WIRE CRIMP

4 ES GELTEN DIE ALLGEMEINEN RICHTLINIEN ZUR VERARBEITUNG VON KONTAKTEN MIT OFFENEN CRIMPHUELSEN NACH DELPHI- VERARBEITUNGS-
SPEZIFIKATION 9 902 0020 UND DIE DIN EN 60 352-2.
GENERAL GUIDLINES FOR THE APPLICATION OF CONTACTS WITH OPEN CRIMP BARRELS IS VALID TO DELPHI SPECIFICATION1: 9 902 00 20 AND DIN EN 60352-2.

16-18104	05.07.16	L	F-H 8 H7 G8 D6	Column Delphi part no. added; CWI had a tolerance field ±0.1; LI for wire range (>0.22-0.35)mm ² was 0.25±0.15; CWI for 0.5mm ² was 2.15 and for 1mm ² was CWI 2.55; wire crimp height and wire crimp width were changed for the wire crimp range (>1-1.5)mm ² ; new applicator is necessary for (>1-1.5)mm ² ; section A-A CHC was SC- dimension; Section B-B: CHI was (CHI)	P. Nuetzel	R. Reger	St. Müller						
14-06082	20.05.14	X		CHC and CWC were complete changed; the values CHC were as follow: 0.35mm ² and AWG22 was 1.06±0.03; 0.5mm ² and AWG 20 was 1.2±0.5; 0.75mm ² was 1.27±0.05; 1.0mm ² was 1.35±0.05; the values CWC was for the crimp range (>0.2-0.35) mm ² 1.6±0.25 and for the 2 other crimp ranges 2.0±0.25; the insulation crimp height CHI was as follow: for 0.35mm ² and AWG22- 1.8±0.2; for 0.5- 1.95±0.1/-0.05, for AWG 20- 2.1, for 0.75- 2.25±0.1/-0.05 for 1mm ² - 2.45±0.1/-0.05; for AWG16 was the value 2.7±0.1; for 1.4mm ² - and 1.5mm ² - 2.7±0.1; Values for CWI were as follow: 0.35 mm ² and AWG 22: 1.8±0.2 (0.5-1.0)mm ² and AWG 20: 2.2±0.3 (>1-1.5)mm ² and AWG 16: 2.8±0.05	St. Müller	P. Nuetzel	F. Pacher						
ECN-NO. ECN NUMBER	DATE DATUM	DD/ MM / YY	REVISION INDEX	POSITION POSITION	CHANGE DESCRIPTION ÄNDERUNG			DRAWN BY GEZ.	CHK. BY GEZ.	APPR. BY GEZ.			
PRODUCT SPEC. PRODUKT SPECIFIK.	PACKAGING SPEC. VERPACKUNGS SPECIFIK.	APPLICATION SPEC. ANWENDUNGS SPECIFIK.		COPYRIGHT DELPHI CORPORATION AND/OR ITS AFFILIATES. ALL RIGHTS RESERVED. REVISED THIS DRAWING IS THE PROPERTY OF DELPHI CORPORATION. THE REPRODUCTION, DISTRIBUTION AND UTILIZATION OF THIS DOCUMENT OR ITS RELATED CAD DATA DISTRIBUTION AND UTILIZATION OF THIS DOCUMENT OR ITS RELATED CAD DATA, AS WELL AS COMMUNICATION OF ANY CONTENT TO OTHERS, WITHOUT EXPRESS AUTHORIZATION IS PROHIBITED.				DELPHI CORPORATION DELPHI PACKARD ELECTRICAL/ELECTRONIC ARCHITECTURE NÜRNBERG GERMANY					
TOLERANCES TOLERANZEN	MATERIAL MATERIAL	SURFACE FINISH OBERFLÄCHE		CAD SYSTEM				pro / eng.					
COUNTERPART N. GEGENSTÜCK N.	COLOUR FARBE	TOOL NO. WERKZEUG N.		ISO PROJECTION ISO PROJEKTION				DIMENSION IN MILLIMETERS BEMASSUNG IN MILLIMETERN					
DO NOT SCALE DRAWING ZEICHNUNG NICHT VERMESSEN	DATE DATUM	NAME NAME		ECON. Loc. Code STANDORT CODE				DRAWING NUMBER ZEICHN. NUMMER					
DRAWN BY GEZ.	26.03.08	A. Bauer		CRIMP- SPEC. FLKT. UND FLST. DCS2-1.5 NWD				9 084 10 00					
CHECKED BY GEZ.	26.03.08	P. Nuetzel		CRIMP SPEC. FEMALE AND MALE DCS2-1.5 NWP				2 of 3					
APPROVED BY GEZ.	26.03.08	J. Muehl.		CAT. NO. KATALOG N.				FILE NAME DATEI NAME					
								90841000.LC					
								SCALE M: 10:1					

		11		10		9		8		7		6		5			
MVL-TEILE- NR. MVL-PART- NO.	DELPHI TEILE-NR. PART-NO:	ANSCHLUSS- BEREICH CRIMP SIZE (mm ²)	CRIMP- CODE	DRAHTQUER- SCHNITT WIRE SIZE (mm ²)	ISOLATION D INSULATION D (mm)	L ±0.4	DRAHTCRIMP WIRE CRIMP	ISOLATIONS CRIMP	ISOLATIONS CRIMP	ISOLATIONS CRIMP	ISOLATIONS CRIMP	ISOLATIONS CRIMP	EINZELADERDICHUNG (EAA) SINGLE WIRE SEAL (SWS)	ISOLATIONS-Ø INSULATION-Ø	MVL-APPLIKATOR MVL-APPLICATOR		
							CH _C ±0.04	CW _C ±0.05	CH _I ±0.05	CW _I ±0.15	CRIMP TYPE	L1±0.2	MVL-NR. MVL-NO.	VERITAS-NR. VERITAS-NO.	FARBE COLOR		
6 000 12 34	10847167	0.5-1.0	00	0.50	1.4-1.6	4.3	1.17	2.07	3.15	3.20	UMFASSUNGS- CRIMP WRAP CRIMP	0.4	6 099 39 28	17 541	GRAU GREY	1.4-1.9	6 520 04 14
6 000 15 34	10811962																
6 010 01 34	13760268																
6 010 13 34	33504736																
6 010 07 34	10779703																



BILDI. FLACHKONTAKT DCS2-1.5 MIT EINZELDICHUNG
PICTURE1. FEMALE TERMINAL DCS2-1.5 WITH SINGLE WIRE SEAL

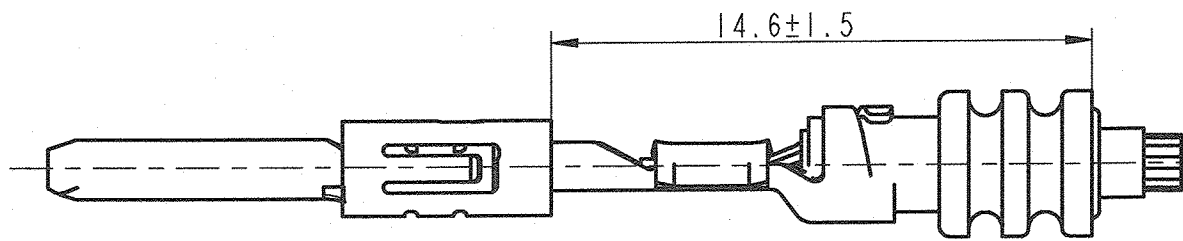
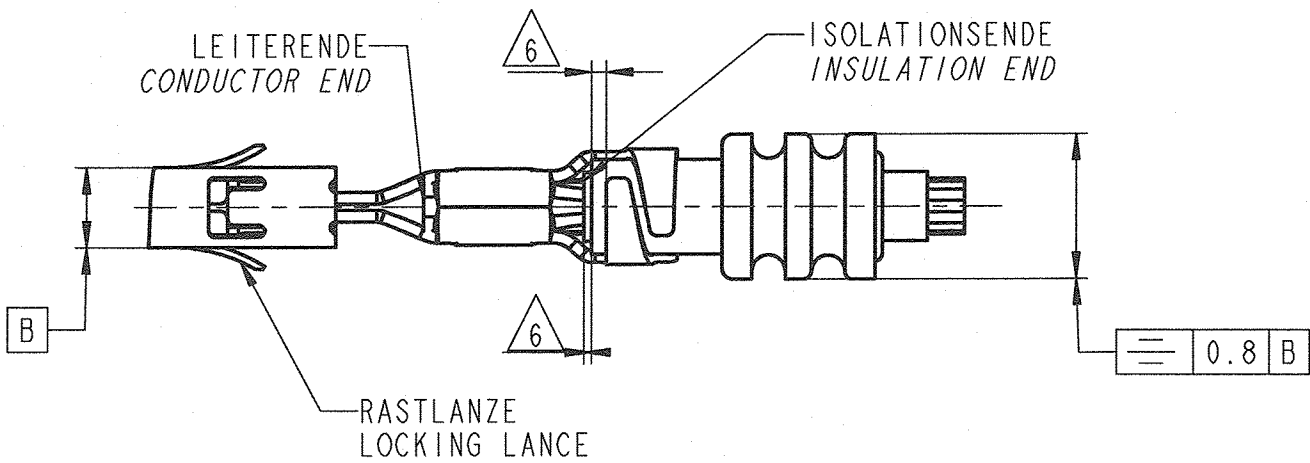
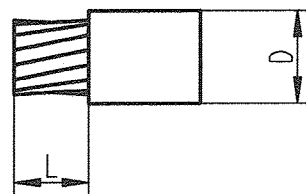


BILD2. FLACHSTECKER DCS2-1.5 MIT EINZELDICHUNG
PICTURE 2. MALE TERMINAL DCS2-1.5 WITH SINGLE WIRE SEAL



ABISOLIERLAENGE
STRIP LENGTH



NUR GUELTIG NUR FUER SONDERANWENDUNG DELPHI/ FRANCE
ONLY AVAILABLE FOR SPECIAL APPLICATION DELPHI/ FRANCE

BEMERKUNGEN / NOTES

- LEITUNGEN FLR NACH DIN 72551-6, AUSGENOMMEN DIE AWG-LEITUNGEN
WIRE TYPES FLR DIN 72551-6 UNLESS AWG- WIRES/ CABLES
- AUSREISSKRAFT DES LEITERS AUS DEM DRAHTCRIMP SIEHE: 1 EXTRACTION FORCE OF WIRE OUT THE
WIRE CRIMP SEE: DIN EN 60 352-2.
- CW_C EFFEKTIVE CRIMPBREITE DRAHTCRIMP 1 EFFECTIVE CRIMP WIDTH WIRE CRIMP
- DIE VERWENDUNG DER EINZELDICHUNGEN IST ABHÄNGIG VOM ISOLATIONS-DURCHMESSER DER LEITUNG UND NICHT VOM LEITUNGSQUERSCHNITT. DURCH
DEN CRIMPVORGANG DARF DIE EINZELDICHUNG IM BEREICH DES BUNDDURCHMESSERS NICHT EINGESCHNITTEN ODER VERLETZT WERDEN. DRUCKSTELLEN
UND MARKIERUNGEN SIND ZULAESSIG, WENN SIE NICHT ZUR RISSBILDUNG ODER DURCHTRENNEN DER DICHUNG FUEHREN.
THE APPLICATION OF SINGLE WIRE SEALS IS DEPENDS ON THE INSULATION DIAMETER AND NOT FROM THE WIRE SECTION. AFTER CRIMPING
THE SWS DO NOT HAVE VISIBLE CUTS OR NOTCHES AROUND THE DIAMETER OF COLLAR. ONLY PRESSURE POINTS OR MARKS ALLOWED,
WHICH CAN NOT CAUSE TEARING OR SPLITTING OF IN THE LONG TERM.
- ES GELTEN DIE ALLGEMEINEN RICHTLINIEN ZUR VERARBEITUNG VON KONTAKTEN MIT OFFENEN CRIMPHUELSEN NACH DELPHI- VERARBEITUNGS-
SPEZIFIKATION 9 902 0020, DIE ALLGEMEINEN RICHTLINIEN ZUR VERARBEITUNG VON EINZELDICHUNGEN 9 902 00 30 SOWIE DIE DIN EN 60 352-2.
GENERAL GUIDLINES FOR THE APPLICATION OF CONTACTS WITH OPEN CRIMP BARRELS IS VALID TO DELPHI SPECIFICATION1: 9 902 00 20,
THE GENERAL GUIDLINES FOR APPLICATIONS WITH SINGLE WIRESEALS 9 902 00 30 AND DIN EN 60352-2.

16-1804	05.07.16	L	Column with Delphi part no. added (see table); CWI was 3.25±0.15			P. Nuetzel	R. Reger	St. Müller
14-00082	20.005.14	K	CHW WAS 1.2±0.05 and CWW was 2±0.25;			St. Müller	P. Nuetzel	F. Pacher
12-00079	15.02.12	H	CH _I was changed to 3.3±0.15; Notes were updated					
ECN-NO. ECN NUMBER	DATE DATUM	DD / MM / YY	REVISION INDEX	POSITION POSITION	CHANGE DESCRIPTION ÄNDERUNG	DRAWN BY GEZ.	CHK. BY GEZ.	APPR. BY GEZ.
PRODUCT SPEC. PRODUKT SPEZIFIK.	PACKAGING SPEC. VERPACKUNGS SPEZIFIK.		APPLICATION SPEC. ANWENDUNGS SPEZIFIK.		COPYRIGHT DELPHI CORPORATION AND/OR ITS AFFILIATES. ALL RIGHTS RESERVED. REVISED THIS DRAWING IS THE PROPERTY OF DELPHI CORPORATION. THE REPRODUCTION, DISTRIBUTION AND UTILIZATION OF THIS DOCUMENT OR ITS RELATED CAD DATA, AS WELL AS COMMUNICATION OF ANY CONTENT TO OTHERS, WITHOUT EXPRESS AUTHORIZATION IS PROHIBITED. DIESE ZEICHNUNG IST EIGENTUM DER FIRMA DELPHI UND ENTHÄLT DELPHI VERTRAULICHE INFORMATIONEN. DIE REPRODUKTION, VERTEILUNG UND NUTZUNG DIESER DOKUMENTE ODER DEREN INHALTSBEZUGEN CAD DATEN, SOWIE AUCH ALS KOMMUNIKATION VON BELIEBIGEN INHALT ZU ANDEREN, IST OHNE BEZUGSSTÄTTUNG DURCH DIE DELPHI CORPORATION UNZULÄSSIG.			
TOLERANCES -- TOLERANZEN --	MATERIAL : MATERIAL : ---		SURFACE FINISH OBERFLÄCHE		DELPHI CAD SYSTEM			
COUNTERPART N. GEGENSTÜCK N.	COLOUR : FARBE : ---		TOOL NO. Werkzeug Nr.		ECO Loc. Code STANDORT CODE GN		DELPHI PACKARD ELECTRICAL/ELECTRONIC ARCHITECTURE NUERNBERG GERMANY	
DO NOT SCALE DRAWING ZEICHNUNG NICHT VERMESSEN	DATE DATUM	NAME NAME	TITLE BENENNUNG		ISO PROJECTION 1:1 PROJEKTION		DIMENSION IN MILLIMETERS BEMASSUNG IN MILLIMETERN	
DRAWN BY GEZ.	DATE DATUM	NAME NAME	TITLE BENENNUNG		ISO PROJECTION 1:1 PROJEKTION		DIMENSION IN MILLIMETERS BEMASSUNG IN MILLIMETERN	
CHECKED BY GEZ.	DATE DATUM	NAME NAME	TITLE BENENNUNG		ISO PROJECTION 1:1 PROJEKTION		DIMENSION IN MILLIMETERS BEMASSUNG IN MILLIMETERN	
APPROVED BY GEZ.	DATE DATUM	NAME NAME	TITLE BENENNUNG		ISO PROJECTION 1:1 PROJEKTION		DIMENSION IN MILLIMETERS BEMASSUNG IN MILLIMETERN	
26.03.08 A. Bauer			CRIMP- SPEZ. FLKT. UND FLST. DCS2-1.5 WD		9 084 10 00		3 of 3	
26.03.08 P. Nuetzel			CRIMP SPEC. FEMALE AND MALE DCS2-1.5 WP		90841000_L.C		SCALE M: 10:1	
26.03.08 J. Muehl			ESR NO. ESR NUMBER		CAT. NO. KATALOG Nr.		FILE NAME DATEI NAME	

Mouser Electronics

Authorized Distributor

Click to View Pricing, Inventory, Delivery & Lifecycle Information:

[Aptiv:](#)

[10763184](#)