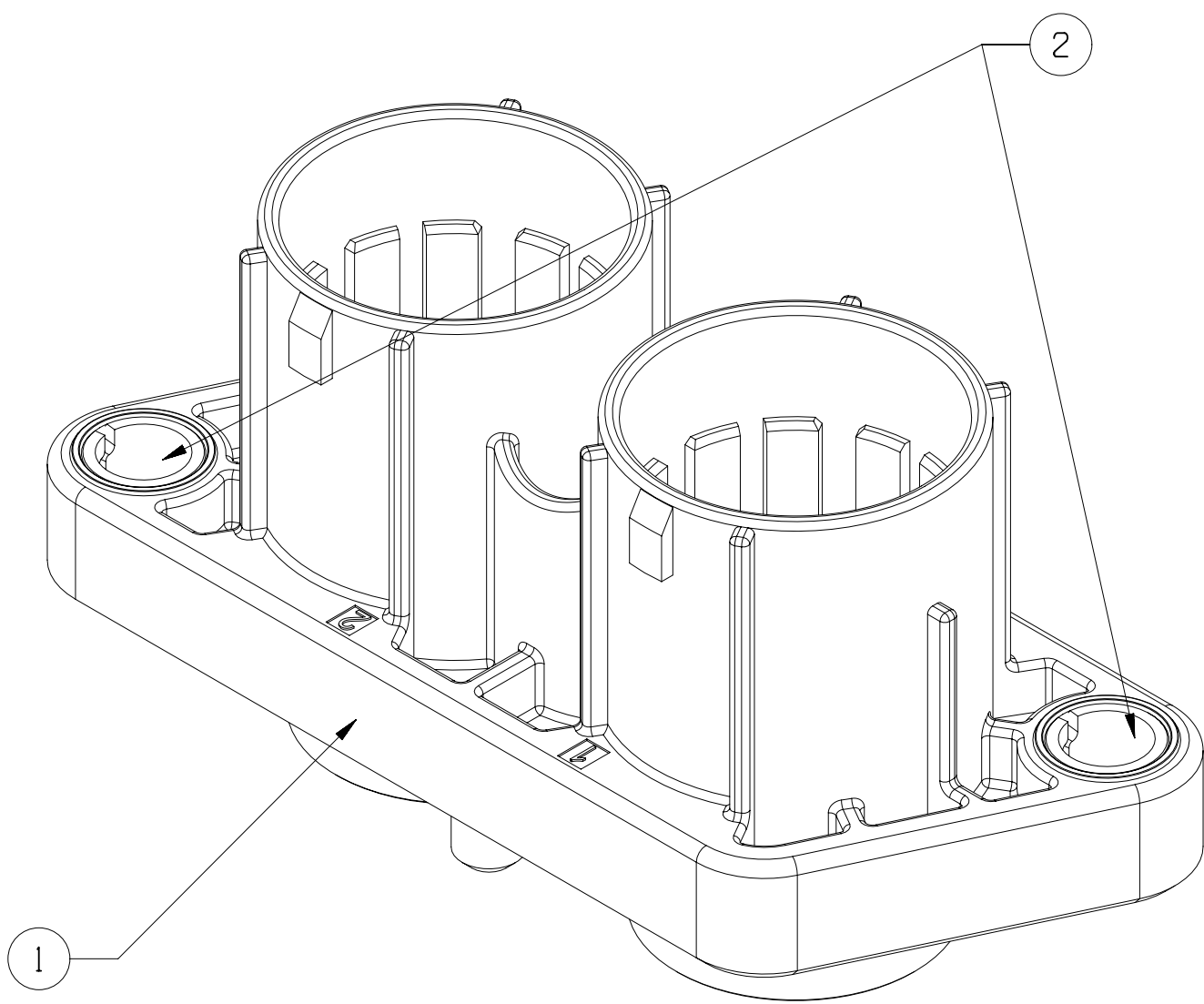
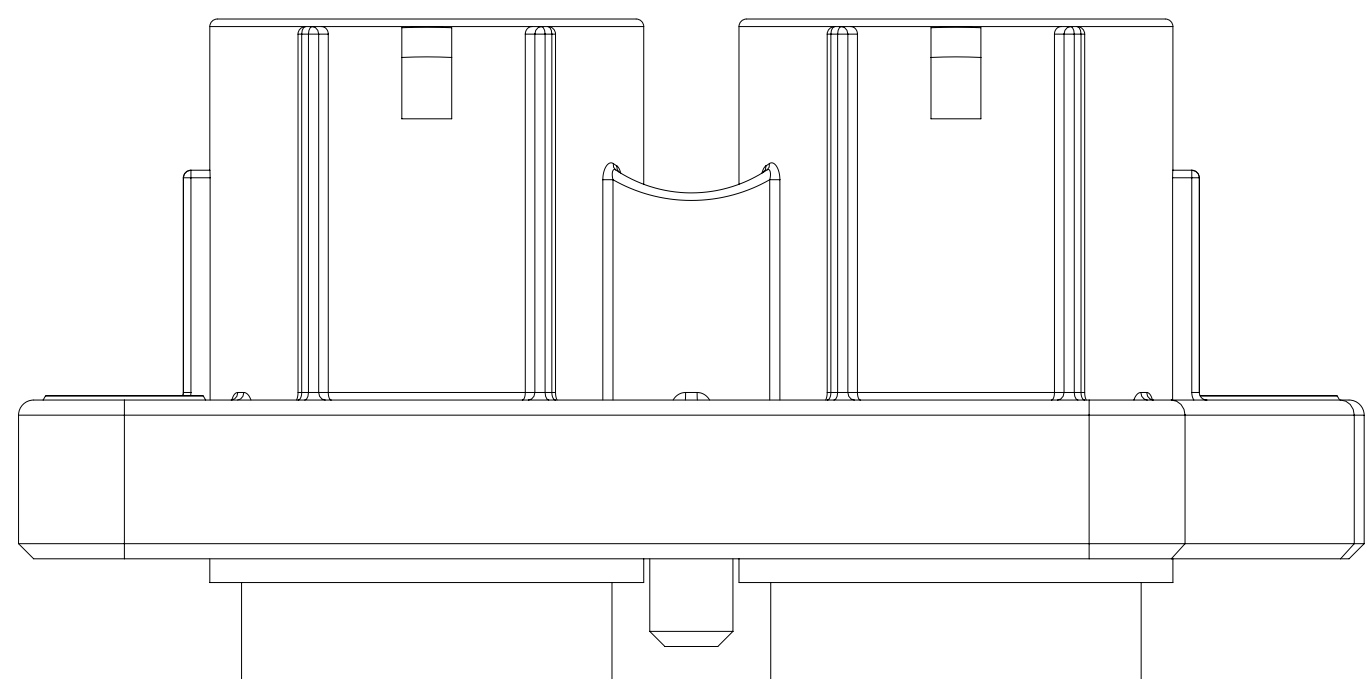
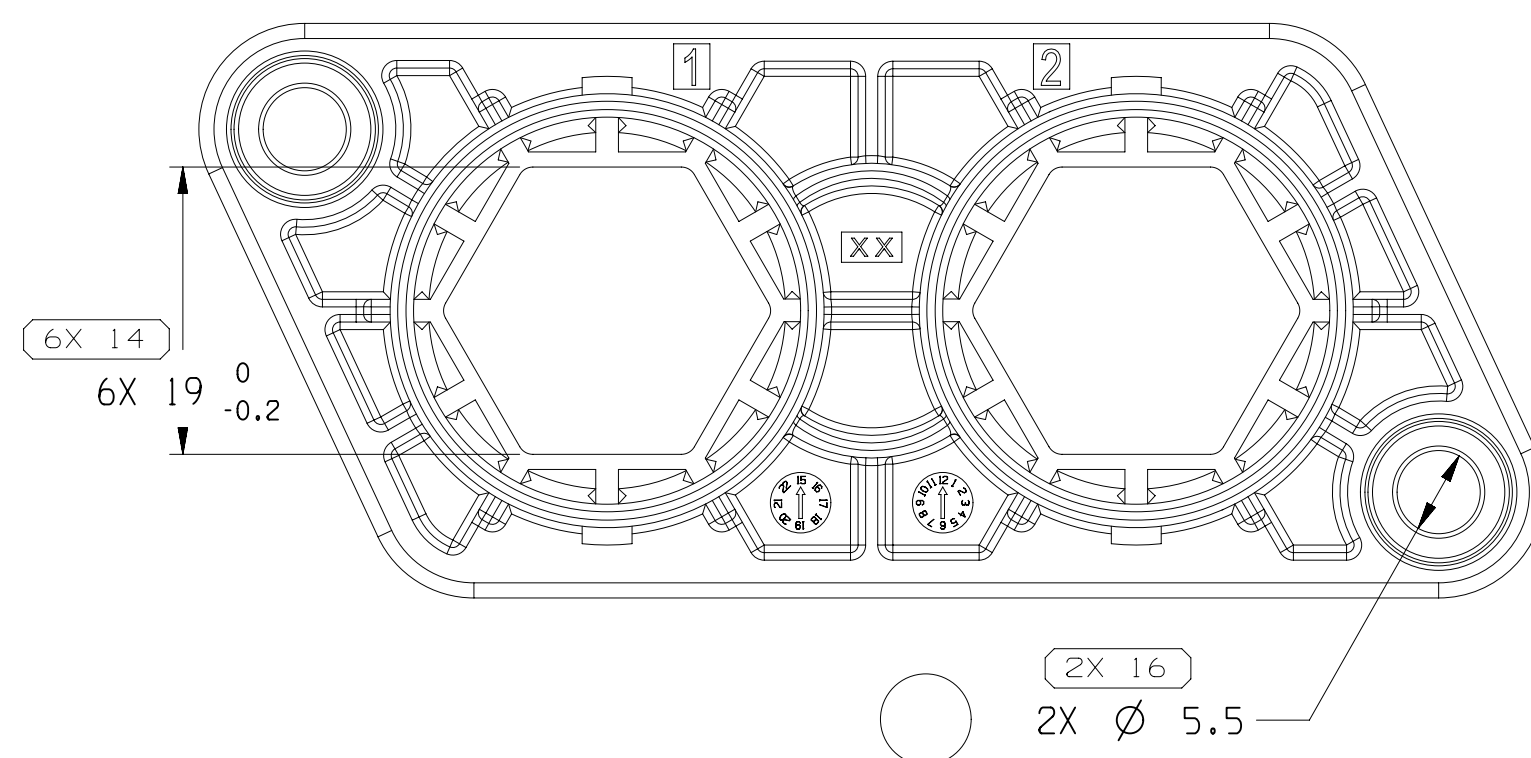
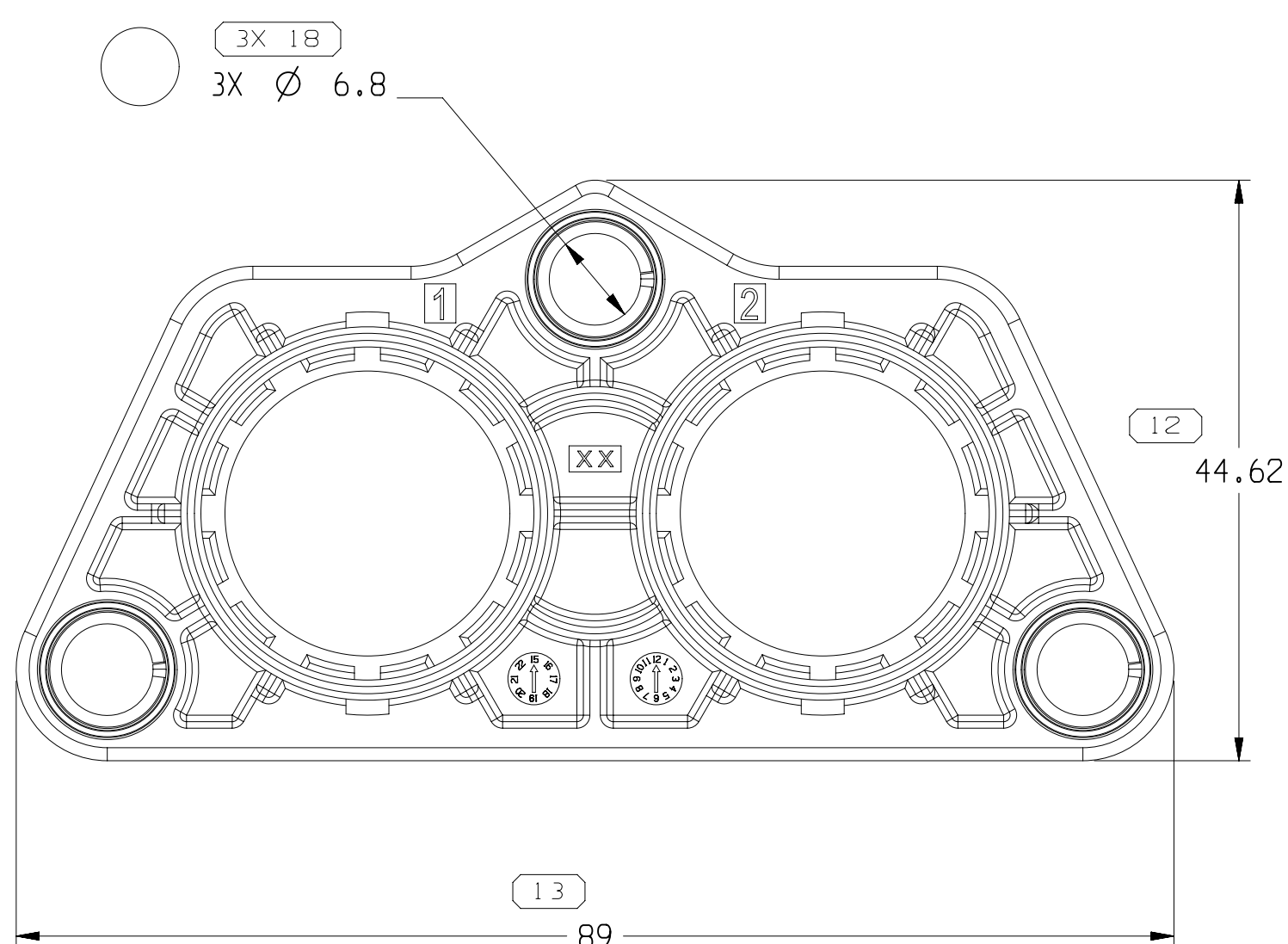
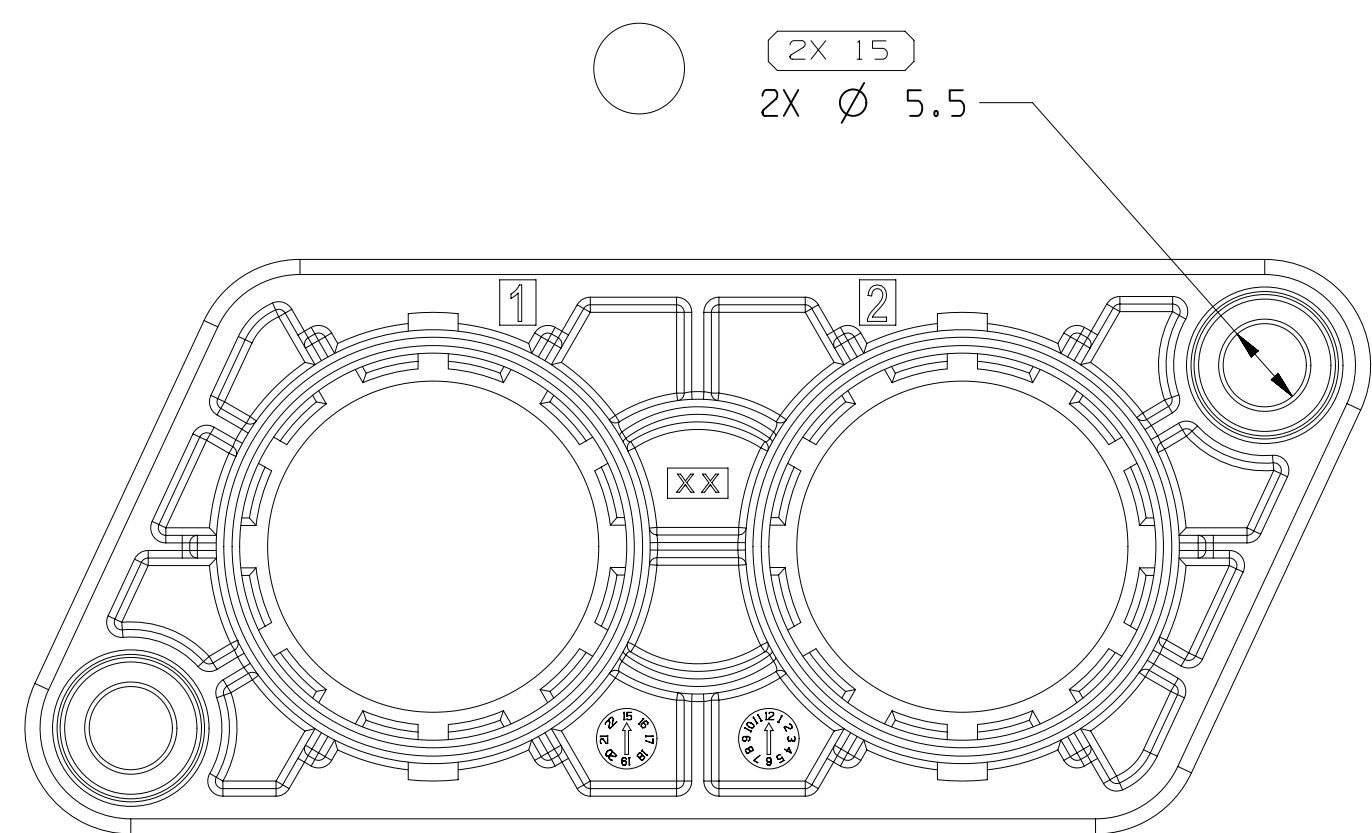
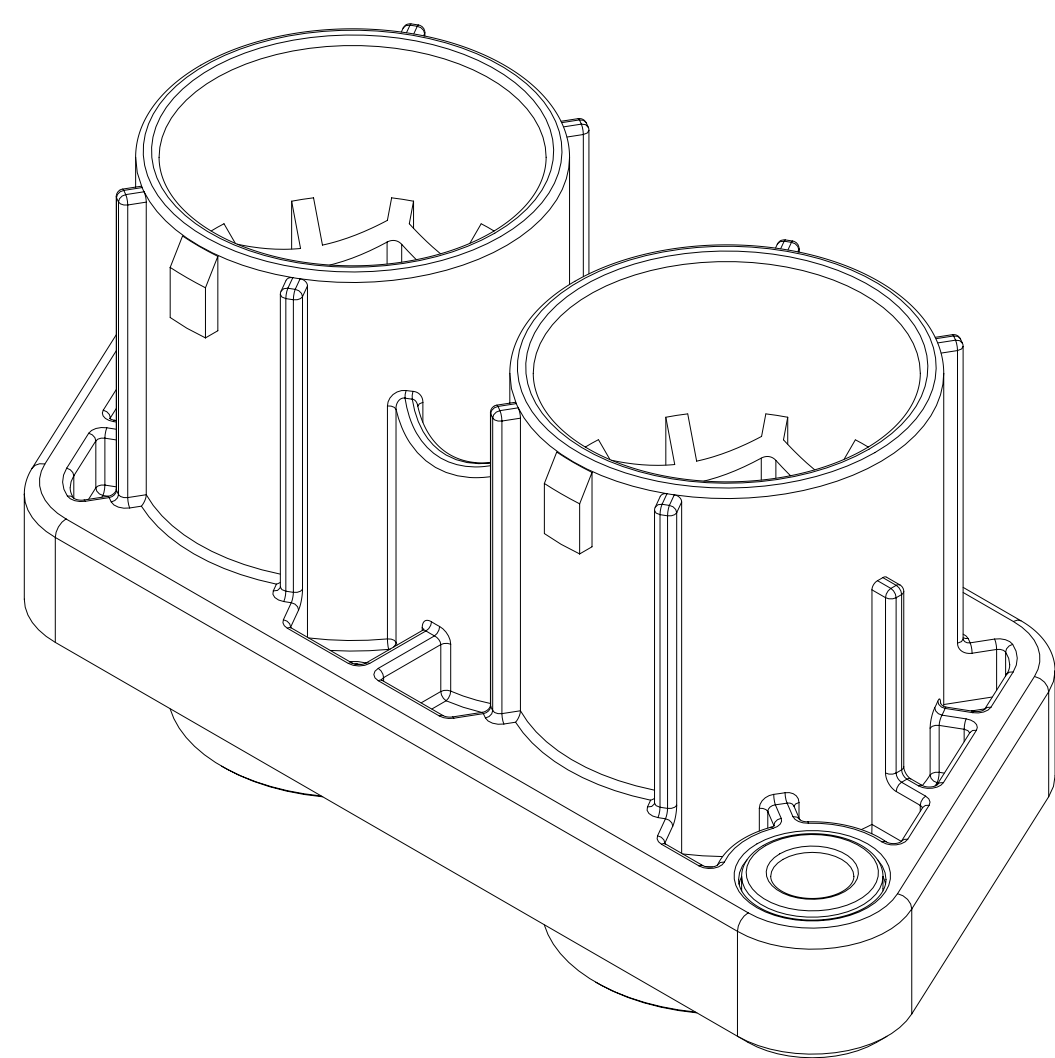
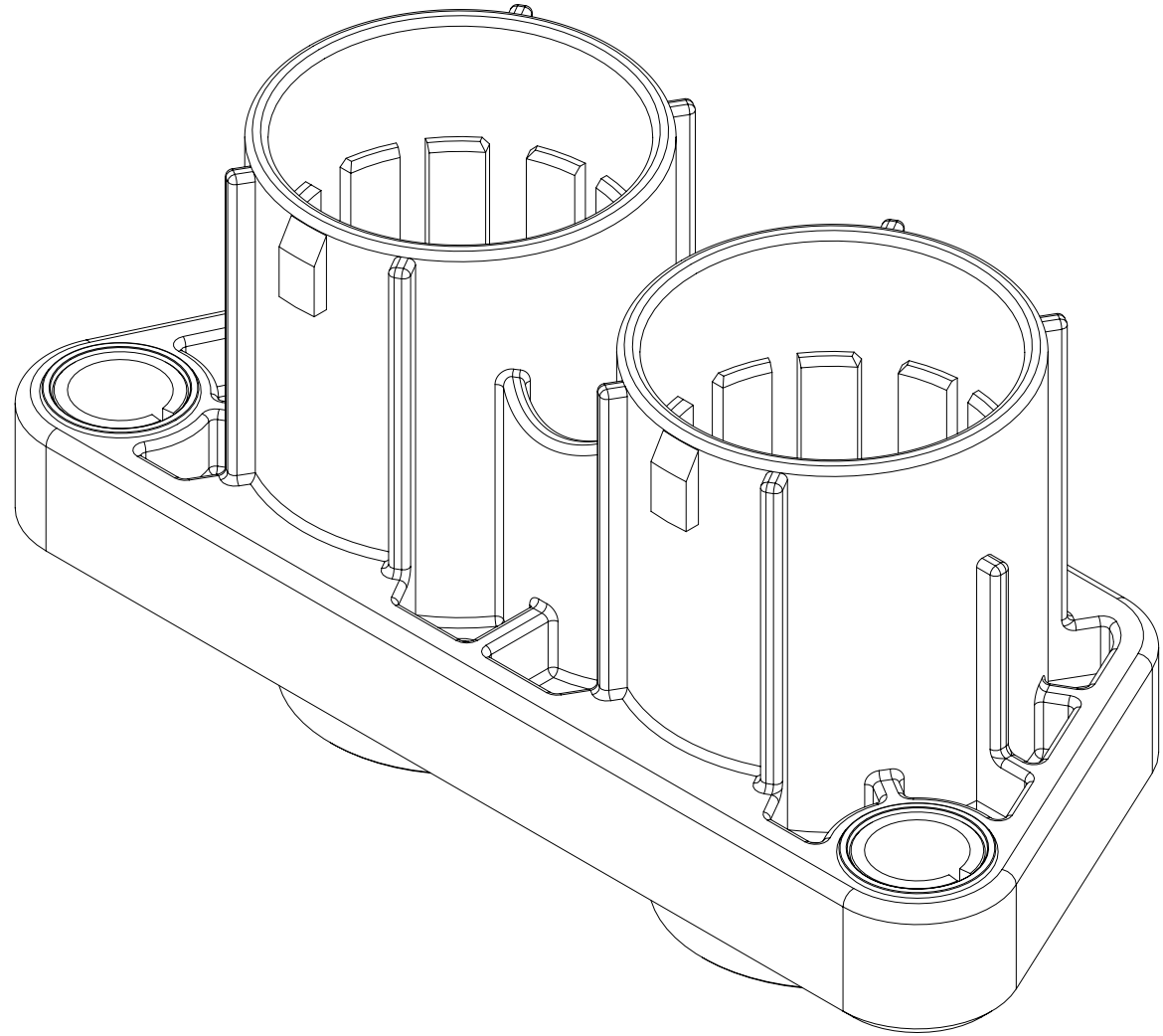
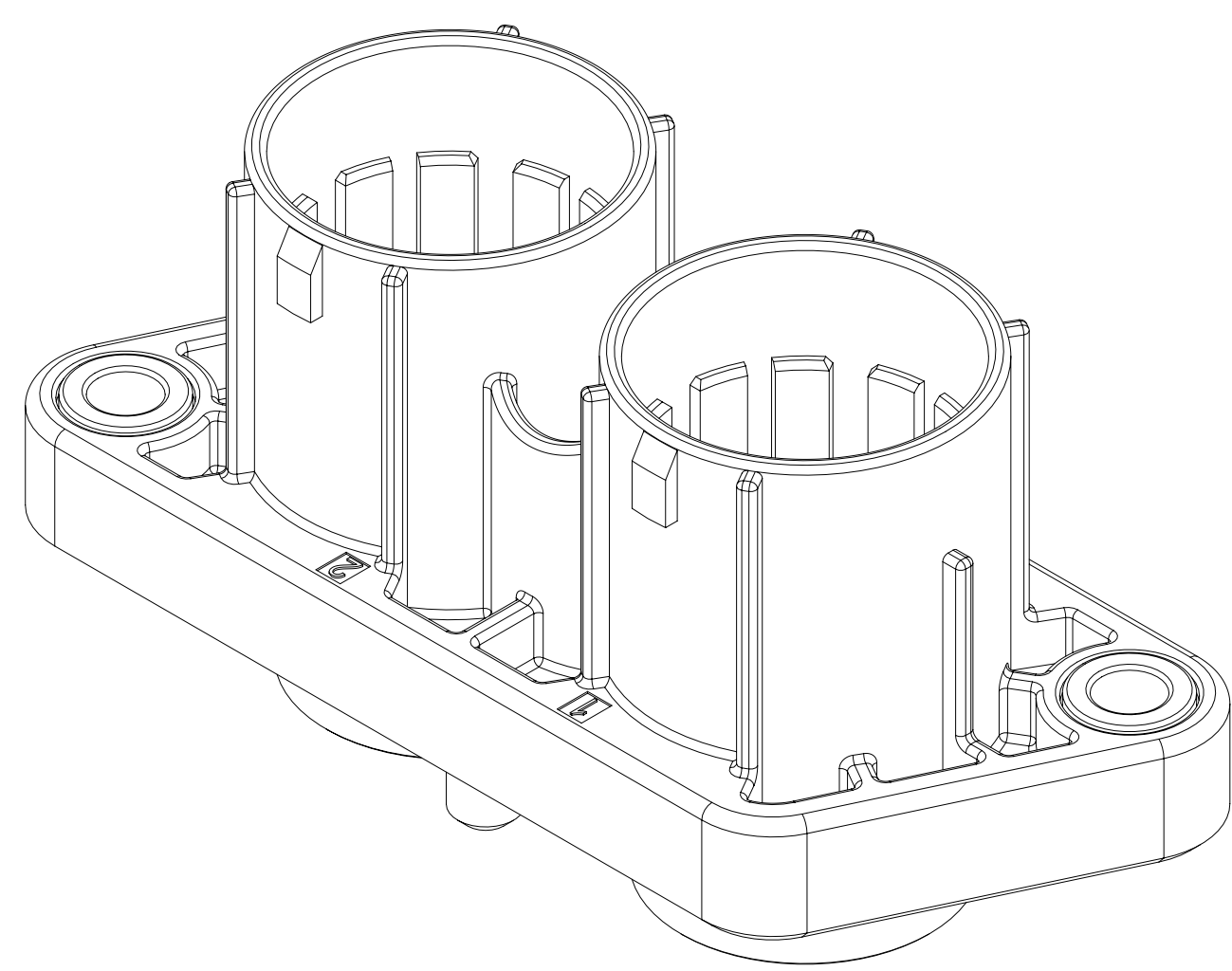
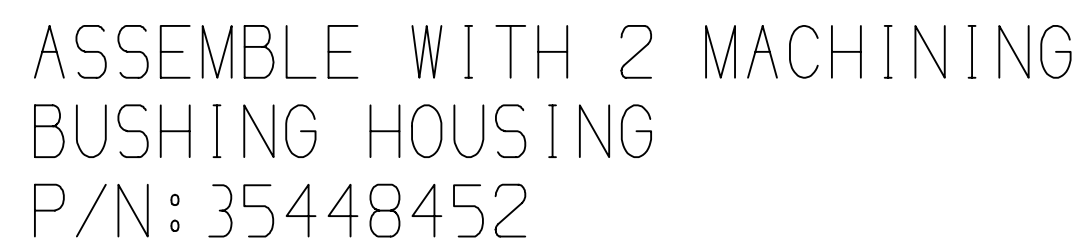


SYMBOL DEFINITION		
A DIMENSION WITHOUT AN INSPECTION REPORT SYMBOL DOES NOT REQUIRE INSPECTION. IT MAY BE CONTROLLED ON THE INDIVIDUAL COMPONENT DRAWING.	TOTAL NO. OF INSPECTIONS REQUIRED	28
	LAST NO. USED	18

MISSING SYMBOLS		DWG STATUS				ZONE	REVISION HISTORY		AUTH	DR	APV	2
NO MISSING SYMBOL NUMBER		DATE	DTG	REV	N/P	CHG						
25DEC18		R	01	-	-		CREATED PART DRAWING	440367	L6	ATY	YZ	
160C19		R	01	AA	-		ADD P/N 35340211	444671		L6	WZM	
08MY20		R	02	-	-		REVISED BUSHING TYPE IN 35340211, ADDED NEW COMPONENT 35448452# ADDED DIM #15, #16, #17, #18	445397		L6	WZM	



2	3544845	-	MACHINING BUSHING	2	PCS	2.52
1	35448451	-	2 SCREW HOLE HOUSING	1	PCS	38.01
-	35448452	01	ASM 2WAY PASSTROUGH HOUSING WITH 2 MACHINING BUSHING	-	-	43.05
2	35448453	-	MACHINING BUSHING	2	PCS	2.52
1	35340212	-	2 SCREW HOLE MIRRORED HOUSING	1	PCS	39.82
-	35340211	02	ASM 2WAY MIRRORED PASSTROUGH HOUSING WITH 2 MACHINING BUSHING	-	-	44.86
2	35197272	-	STAMPING BUSHING	3	PCS	2.21
1	35197713	-	3 SCREW HOLE HOUSING	1	PCS	38.136
-	35197715	01	ASM 2WAY PASSTROUGH HOUSING WITH 3 STAMPING BUSHING	-	-	44.77
2	35197272	-	STAMPING BUSHING	2	PCS	2.21
1	35197714	-	2 SCREW HOLE HOUSING	1	PCS	37.61
-	35197716	01	ASM 2WAY PASSTROUGH HOUSING WITH 2 STAMPING BUSHING	-	-	42.03
ITEM	PART NUMBER	REV	DESCRIPTION	QTY	UOM	REF. WEIGHT (G)

- ## NOTES

1. UNLESS OTHERWISE SPECIFIED AND/OR INDICATED:

DIMENSIONS ARE TO FACE OF VIEW SHOWN AND
AUTOMATICALLY ROUNDED BY COMPUTER FOR INSPECTION
SEE MATH MODEL FOR PRECISION (DIMENSIONS), FOR ALL
OTHER DIMENSIONS NOT SHOWN BUT REQUIRED FOR TOOL
BUILD, SEE MATH MODEL FOR PRECISE TOOL PATH DATA
2. THIS PRODUCT IS NOT CATEGORIZED AS AN APPEARANCE I
MINOR IMPERFECTIONS INCLUDING, BUT NOT LIMITED TO,
FLAKING, PLOTTING, OR BURNISHES, GATE VESTIGES, AND SOFT
FLASH THAT DO NOT AFFECT THE FIT, FORM, OR FUNCTION
OF THE PART ARE PERMISSIBLE PER ENP4-3.CS.01.EN.
3. THE COMPONENTS SHOWN IN THIS DRAWING USED IN ASSEM
SHOWN ON LAYOUT DRAWING 352199S1.
4. PLOTTING FLATLINE IN CARTON.
5. TIGHTENING TORQUES:
STAMPING BUSHING FOR M6 19 NM (+0.9),
MACHINING BUSHING FOR M6 16 NM (+0.6).
6. RAW MATERIAL OF ALL PLASTIC COMPONENTS MEET UL-V0.

A LINE DRAWN THROUGH A PART NUMBER INDICATES THAT PHYSICAL PARTS ARE NOT AVAILABLE FOR ORDERING.
 PART NUMBERS THAT DO NOT HAVE A LINE PRESENT INDICATE THAT PHYSICAL PARTS ARE AVAILABLE FOR ORDERING.
 CONTACT ACTIVIST SALES TO ASSURE AVAILABILITY PARTS
 TWO THIRDS OF THE WAY
 PART DRAWING
 STYLE
 VOLUME (10M)
 SEE CHART
 DISTR CODE
 UNLESS OTHERWISE SPECIFIED
 THIS DOCUMENT IS IN ACCORDANCE WITH ASME Y14.5M-1994
 AS MODIFIED BY THE ASME Y14.5M-1994 DIMENSIONING AND
 TOLERANCING ADDENDUM 2001. SEPARATE PATTERNS OF
 DIMENSIONS WILL BE ISSUED SEPARATELY. REGARDS OF DATUM
 REFERENCES
 ALL DIMENSIONS ARE IN MILLIMETERS
 REFERENCE
 THIRD ANGLE
 PROJECTION
 DO NOT
 SCALE
 USE MATH DATA
 CAD
 NX

<h1 style="text-align: center;">• APTIV •</h1> <p style="text-align: center;">CONNECTION SYSTEMS</p> <p style="text-align: center;">Inching, China</p> <p style="text-align: center;">COPYRIGHT 2018 APTIV. ALL RIGHTS RESERVED.</p> <p style="text-align: center;">THIS DRAWING IS THE PROPERTY OF APTIV AND CONTAINS APTIV CONFIDENTIAL INFORMATION. THE REPRODUCTION, DISTRIBUTION AND UTILIZATION OF THIS DOCUMENT OR ITS RELATED CAD DATA, AS WELL AS COMBINATION OF ANY CONTENT TO OTHERS, WITHOUT EXPRESS AUTHORIZATION, IS PROHIBITED.</p>									
DR					DATE				
APVD1	LINK GAO				25DE18				
APVD2	ANYANG ZHANG				25DE18				
APVD3	TIMON YU				25DE18				
APVD4									
APVD5	SUBSTANCES OF CONCERN AND RECYCLED CONTENT PER APTIV 10949001								
MATERIAL SPEC SHEET									
DRAWING NAME									
TAXI ASM MOUN HOUSING									
DRAWING NUMBER									
35197330									
SIZE	SCALE	FRAME NO	1 OF 2	SHEET NO	1 OF 1	STD	REV	REV	REV
A0	2:1	1	0	1	0	0	0	0	0

	3	PROCESS SENSITIVE DIMENSION
DIMENSIONS ENCLOSED IN () INDICATE REFERENCE DIMENSIONS AND NO TOLERANCE LIMITS ARE ESTABLISHED		
DIMENSIONAL RANGE FROM > 0 TO > 6	MM > 0 > 10 > 120 > 160 > 200 > 250 > 315 > 400	CHART M > 0 > 10 > 120 > 160 > 200 > 250 > 315 > 400
TOLERANCE UNLESS OTHERWISE SPECIFIED ±0.1 ±0.2 ±0.3 ±0.4 ±0.45 ±0.55 ±0.7 ±0.85 ±1.05 ANGULAR TOLERANCE ±1°		

Mouser Electronics

Authorized Distributor

Click to View Pricing, Inventory, Delivery & Lifecycle Information:

[Aptiv:](#)

[35197716](#)