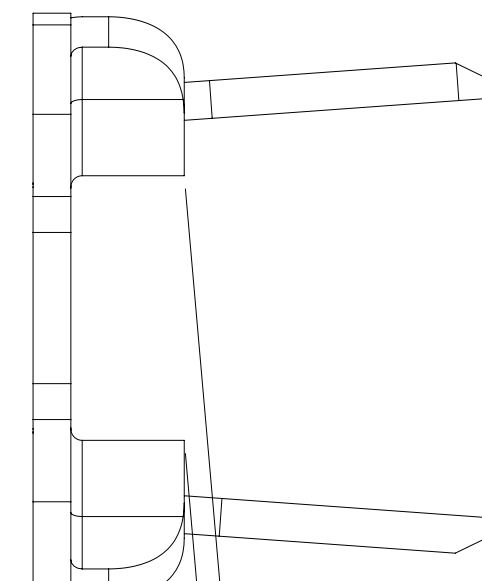
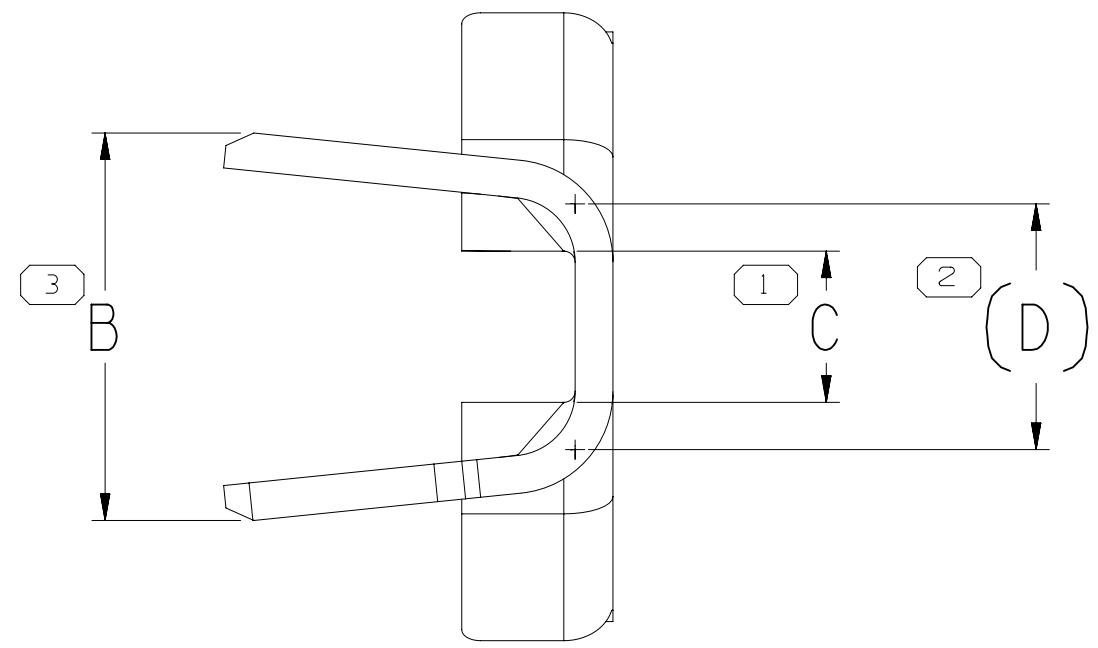
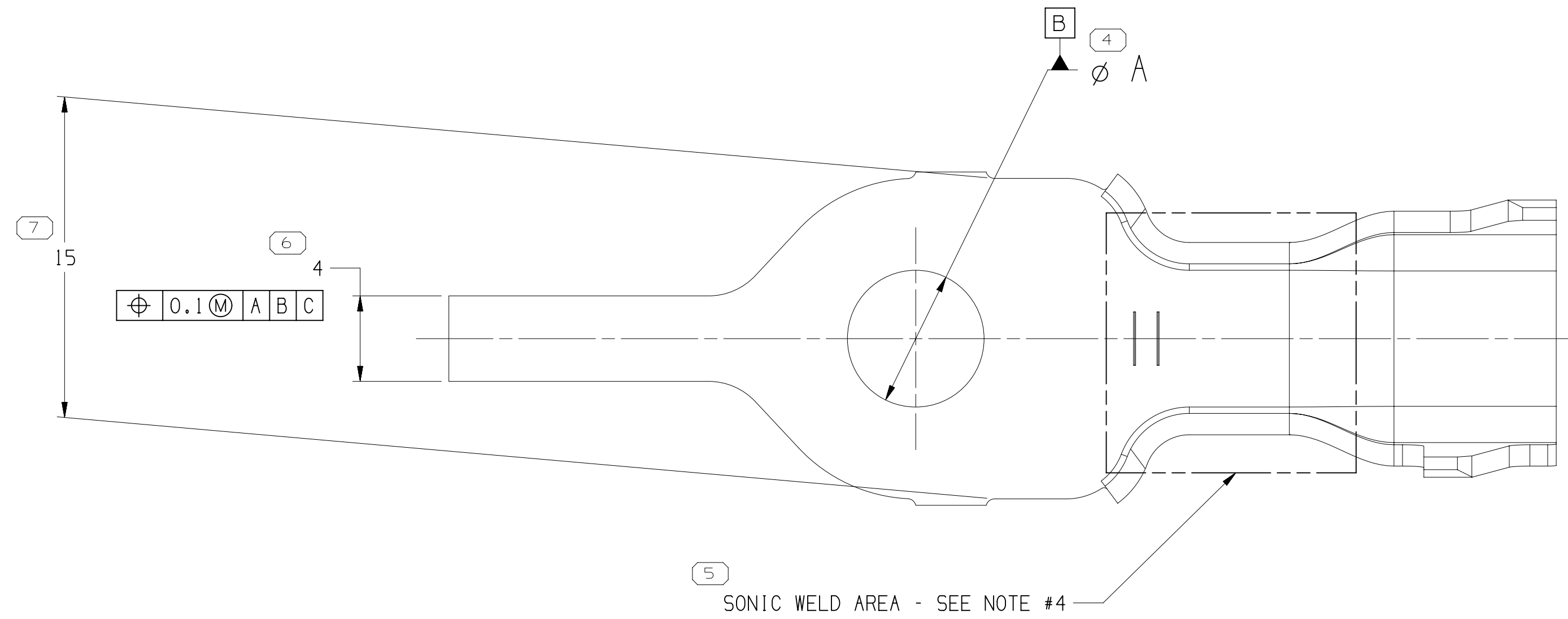


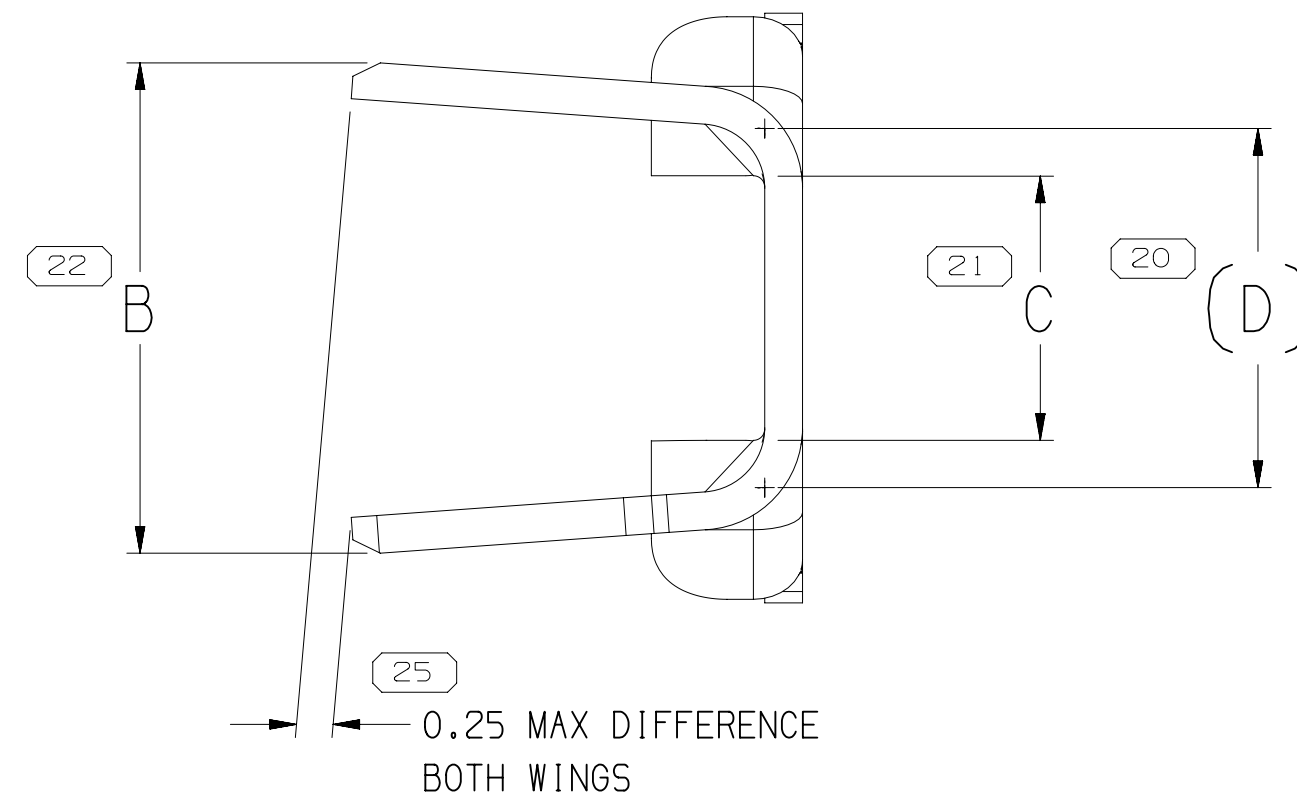
TYPE 1102  
SAME AS TYPE 1101  
EXCEPT AS SHOWN



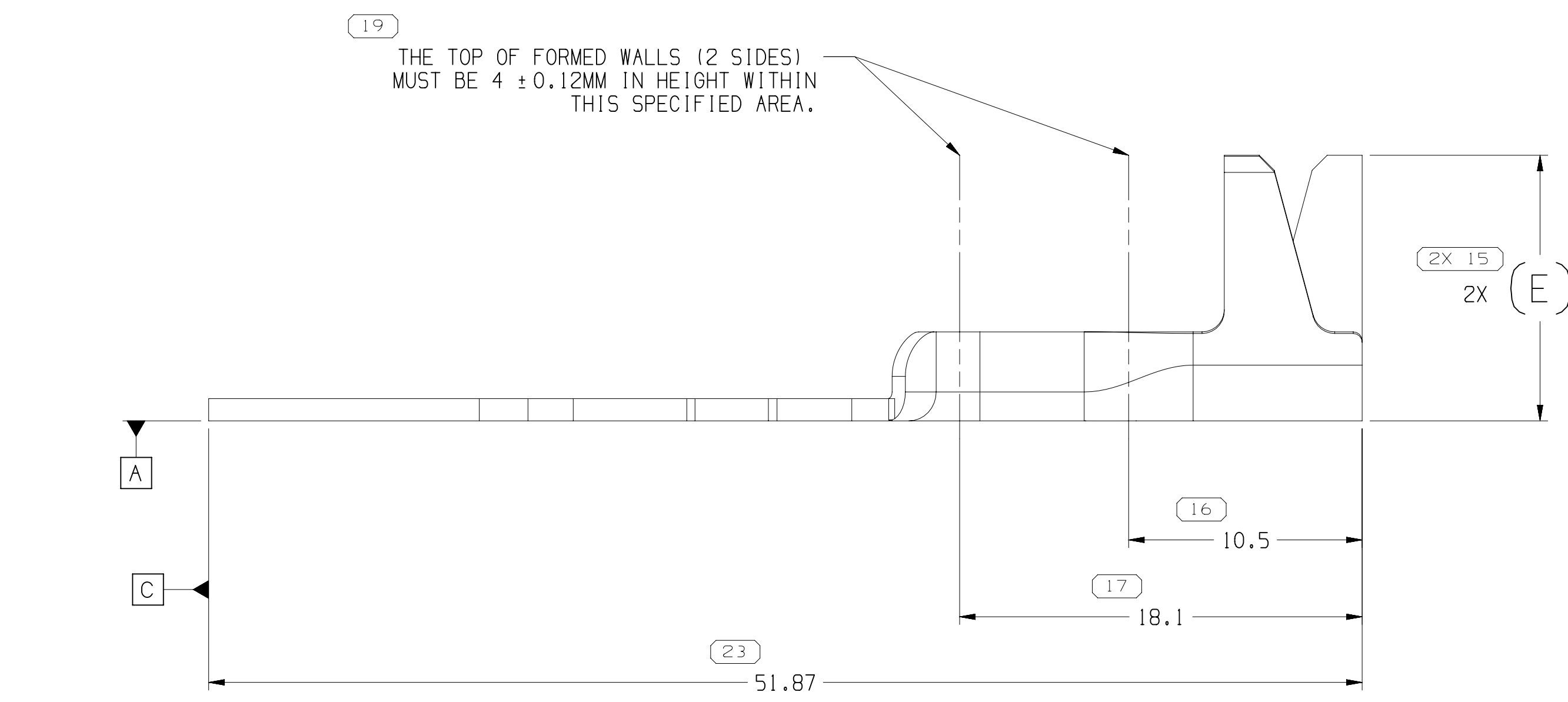
0.25 MAX DIFFERENCE  
BOTH WINGS



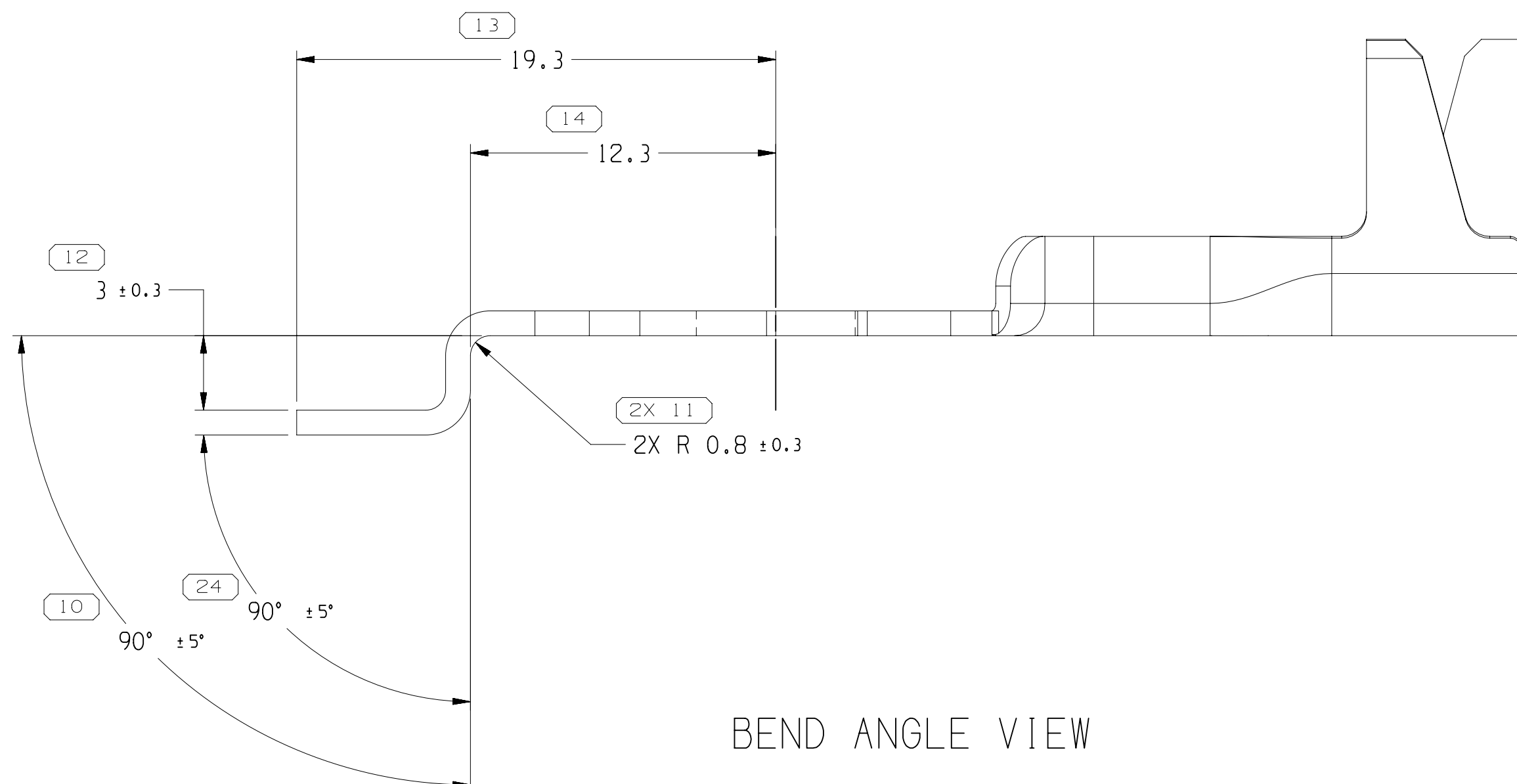
SONIC WELD AREA - SEE NOTE #4



0.25 MAX DIFFERENCE  
BOTH WINGS



TYPE 1101



BEND ANGLE VIEW  
TYPE 1101 & 1102

- NOTES
- UNLESS OTHERWISE SPECIFIED AND/OR INDICATED: DIMENSIONS ARE TO FACE OF VIEW SHOWN AND AUTOMATICALLY ROUNDED BY COMPUTER FOR INSPECTION (SEE MATH MODEL FOR PRECISE DIMENSIONS). FOR ALL OTHER DIMENSIONS NOT SHOWN BUT REQUIRED FOR TOOL BUILD, SEE MATH MODEL FOR PRECISE TOOL PATH DATA.
  - TERMINAL MUST BE MADE USING FIN-LUBE 0177 STAMPING LUBE OIL. ANY OTHER LUBRICANT MUST BE APPROVED BY PRODUCT ENGINEERING.
  - TERMINALS ARE TO BE SINGULATED FROM CARRIER AND PLACED IN CLEAN CLOSED PLASTIC BAG PRIOR TO STORAGE AND SHIPMENT.
  - SONIC WELD AREA AS DEFINED ON DRAWING MUST BE KEPT FREE OF TIN PLATING OR OTHER COATING/PLATING.
  - PARTS SHALL BE FREE OF DEBRIS, RESIDUAL ABRASIVE MATERIALS, CORROSION PRODUCTS, OIL/LUBRICANT AND ANY EXTERNAL RESIDUE.
  - PARTS MUST BE KEPT THE SONIC WELDING AREA DRY PRIOR TO THE WELDING PROCESS.

12.8	1/2	M12
10.34	3/8	M10
8.5	5/16	M8
6.4	1/4	M6
5.53	3/16	M5
4.4	5/32	M4
Ø A ±0.13	STANDARD	METRIC
HOLE	SCREW/STUD SIZE	

22	PROCESS SENSITIVE DIMENSION
22	DIMENSIONS ENCLOSED IN ( ) INDICATE DIMENSIONS ARE ESTABLISHED BY INSPECTION AND NO TOLERANCE IS TO BE ESTABLISHED
22	UNLESS OTHERWISE SPECIFIED, DIMENSIONS ARE TO FACE OF VIEW SHOWN AND AUTOMATICALLY ROUNDED BY COMPUTER FOR INSPECTION (SEE MATH MODEL FOR PRECISE DIMENSIONS). FOR ALL OTHER DIMENSIONS NOT SHOWN BUT REQUIRED FOR TOOL BUILD, SEE MATH MODEL FOR PRECISE TOOL PATH DATA.
22	ALL DIMENSIONS ARE IN MILLIMETERS

THIRD ANGLE PROJECTION	DO NOT SCALE	USE MATH DATA
------------------------	--------------	---------------

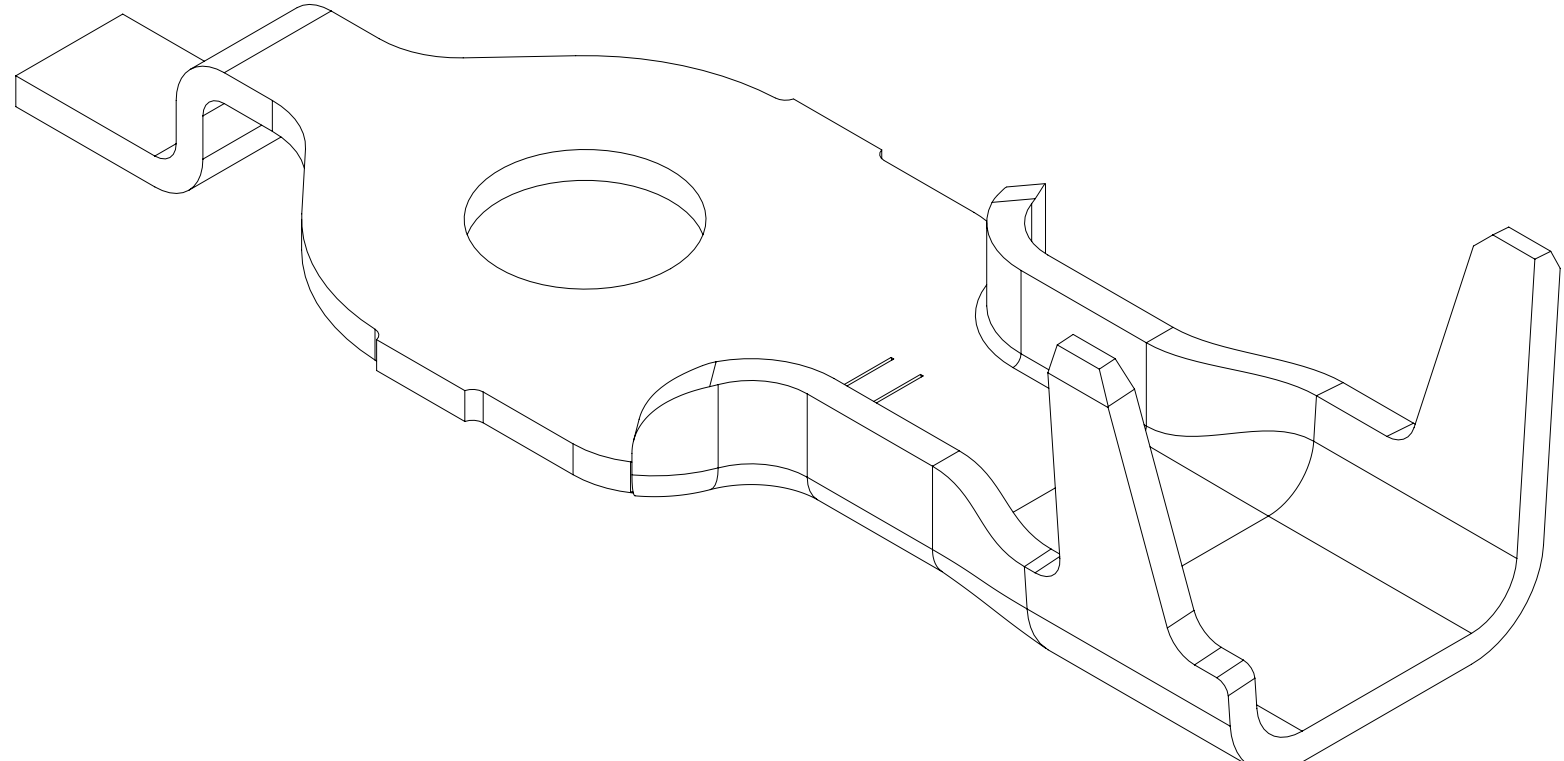
CONNECTION SYSTEMS				
WHEN, IN RIGHTS RESERVED.				
THIS DRAWING IS THE PROPERTY OF APV AND CONTAINS APV CONFIDENTIAL INFORMATION. THE REPRODUCTION, DISTRIBUTION AND UTILIZATION OF THIS DOCUMENT OR ITS RELATED DATA SHALL BE WELL AS COMMUNICATION BY ANY MEANS TO OTHERS, WITHOUT EXPRESS AUTHORIZATION, IS PROHIBITED.				
DATE	DATE			
APPROV: N. RODRIGUEZ	14MR17			
APPROV: N. RODRIGUEZ	14MR17			
APPROV: EDUARDO SOLANO	14MR17			
APPROV:				
SUBSTANCES OF CONCERN AND RECYCLED CONTENT (PER APV 11.10.2010)				
PROPERTY: SEE CHART				
DRAWING NAME: TAXI TERM RING SONIC				
DRAWING NUMBER: 15485965				
SIZE: A1x3	SCALE: 5:1	FRAME NO: 1 OF 2	SHEET NO: 11 OF 11	REV: R 05

DRAWING NUMBER: 15485965				
SIZE: A1x3	SCALE: 5:1	FRAME NO: 2 OF 2	SHEET NO: 11 OF 11	REV: R 05

35037582	02	AB	1.0 X 55	COPPER ALLOY	1102	X	-	-	YES	2.5 - 6.5	1 - 8	10.25	4	6.5	10.3
35037584	02	AC	1.0 X 55	COPPER ALLOY	1101	X	-	-	YES	6.5 - 13.5	1 - 12	12.97	7	9.5	11.94
PART NO	REV	N/P	MAT'L SIZE	MATERIAL SPECIFICATION	TYPE	M6	M8	M10	SCREW/STUD SIZE	ANTI-ROTATION	BUNDLE SIZE MMF	NO. OF WIRES (MIN-MAX)	B ±0.5	(D)	(E)

SYMBOL DEFINITION		MISSING SYMBOLS	
A DIMENSION WITHOUT AN INSPECTION REPORT SYMBOL ( ) DOES NOT REQUIRE INSPECTION. IT MAY BE CONTROLLED ON THE INDIVIDUAL COMPONENT DRAWING.		TOTAL NO. OF INSPECTIONS REQUIRED	25
LAST NO. USED		26	

DWG STATUS				ZONE		REVISION HISTORY		AUTH		DR		APPROV	
DATE	STG	REV	N/P	CHK									
14MR17	R	01	-	-	35037582 & 35037584 WERE PE 361846 & PE 361848 - RELEASED PART DRAWING	435979	NRW	NRW	NRW	NRW	NRW	NRW	NRW
15JN17	R	02	-	-	ALL PARTS - 6.4 WAS 6.7 & 4 WAS 4 ± 0.15, ADDED DIMS (3 PLCS), DATUMS A, B, C & SOFT POSITION CONTROL TO DIM A. REMOVED DIMS (3 PLCS) AND CORRECTED CALLOUT "TYPE 1101" & "TYPE 1102" INSTEAD OF "TYPE 101" & "TYPE 102"	436887	JGM	JGM	JGM	JGM	JGM	JGM	JGM
29JN17	R	03	-	-	35037582 RELEASED, 35037584 OBSOLETE	437121	LES	LES	LES	LES	LES	LES	LES
08MY19	R	04	-	-	35037584 - REINSTATED AND UPDATED PDM ATTRIBUTES: ALL PARTS - REMOVED "PRE-PLATED" NOTE	442909	DAV	JAN	OMS	OMS	OMS	OMS	OMS
15NO19	R	05	-	-	35037584 - REVISION 02AB WAS 03 FOR AUTH NUMBER 442909	550541	CGD	CGD	OMS	OMS	OMS	OMS	OMS



26028421

# Mouser Electronics

Authorized Distributor

Click to View Pricing, Inventory, Delivery & Lifecycle Information:

[Aptiv:](#)  
[35037582](#)