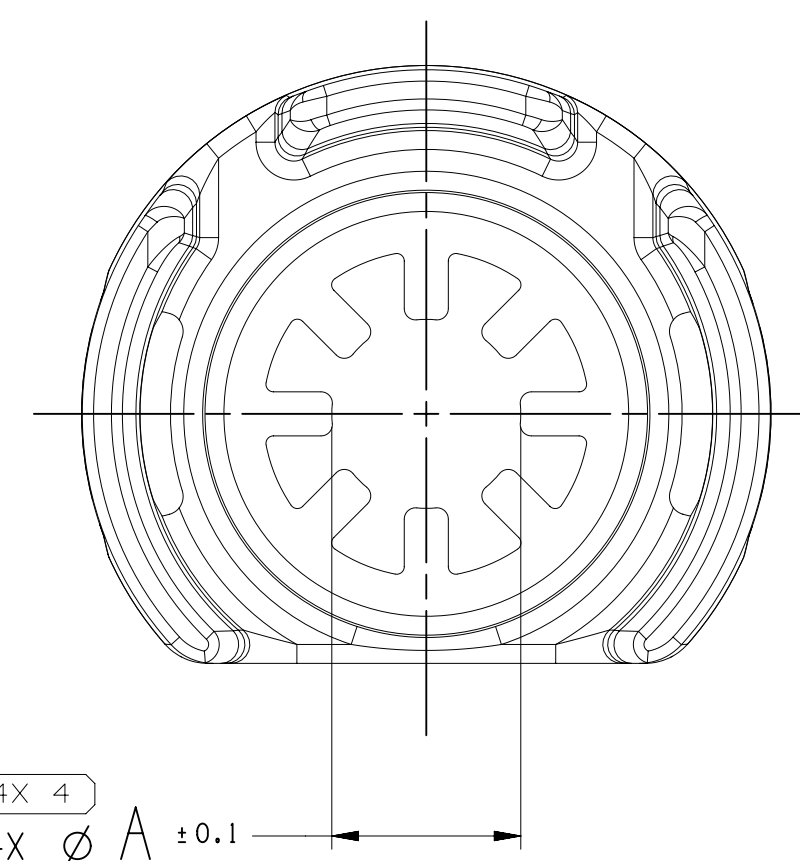
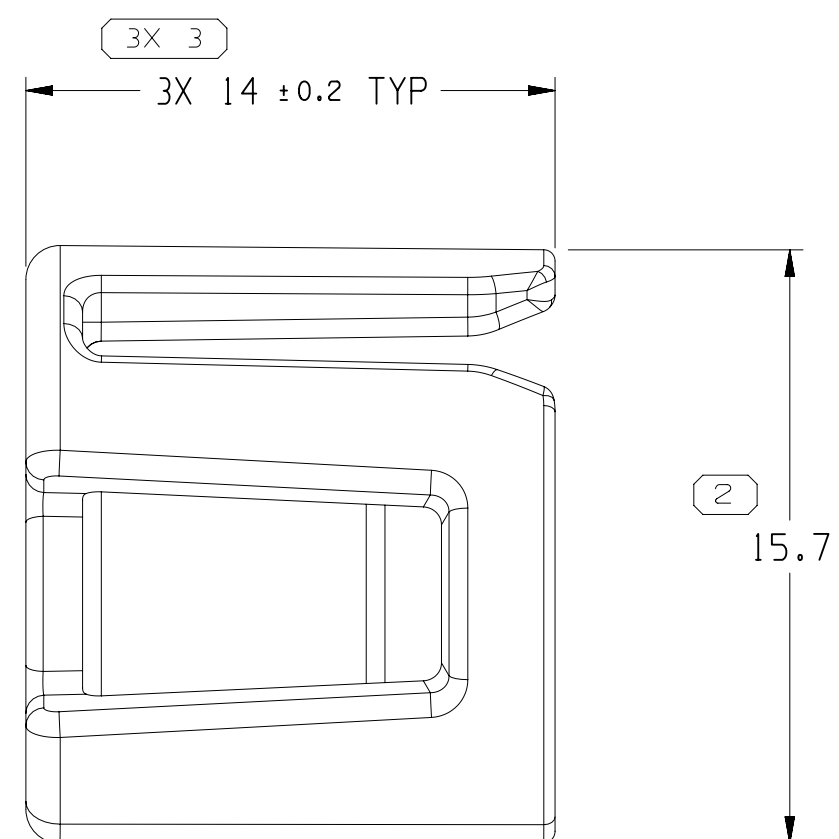
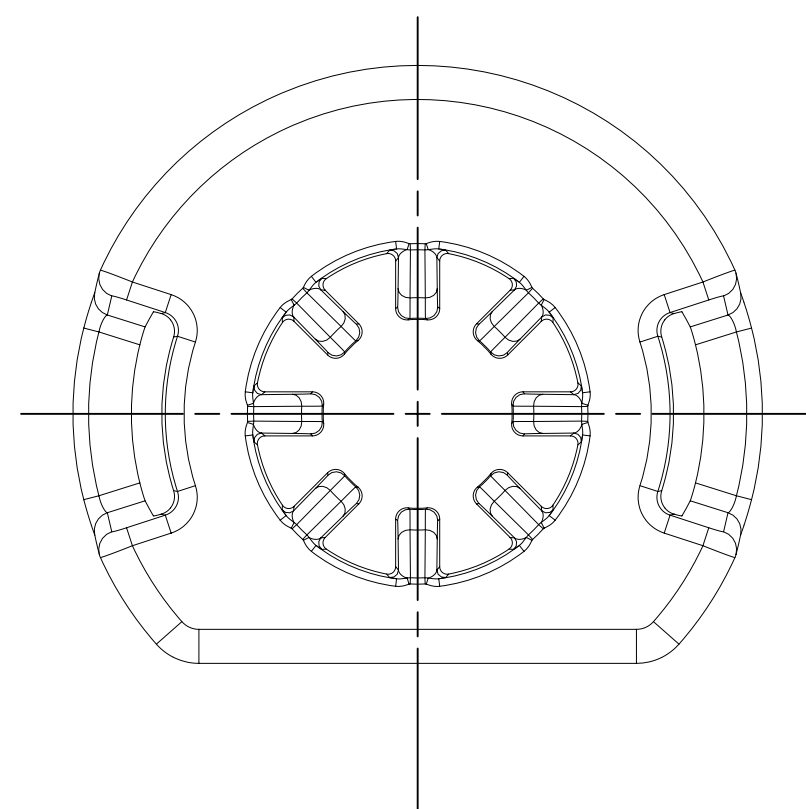
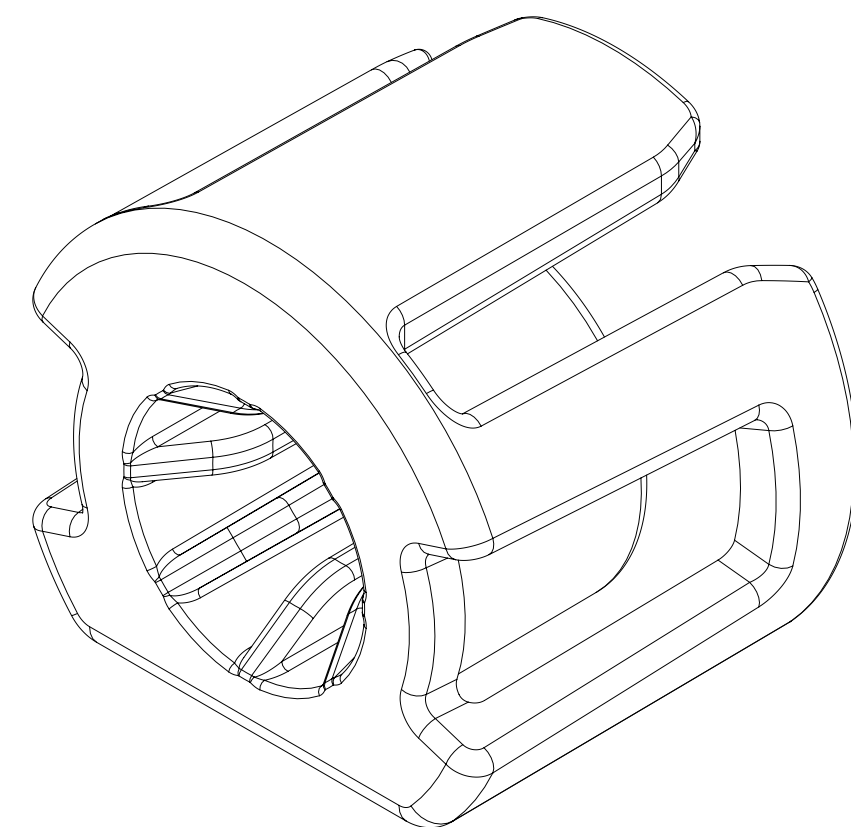
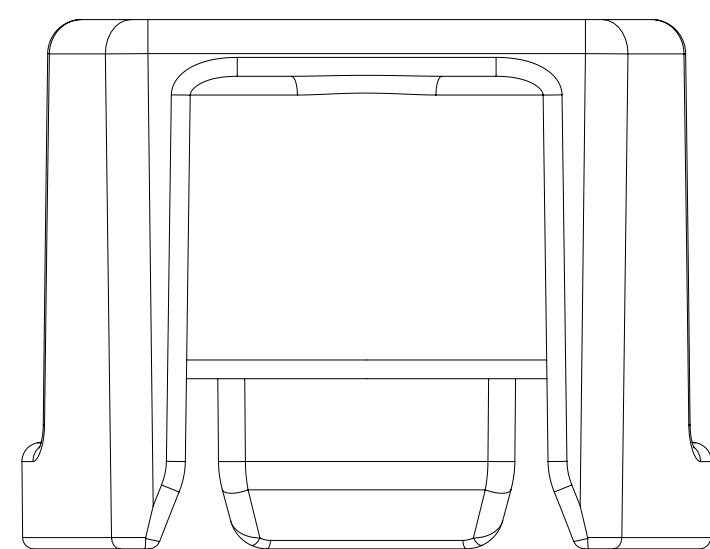


MISSING SYMBOLS  NO MISSING SYMBOL NUMBER	DWG STATUS					ZONE	REVISION HISTORY	AUTH	DR	APVD 1	APVD 2
	DATE	STG	REV	N/P	CHG						
	29SE20	R	01	-	-						
	20JL21	R	02	-	-	35586485 - RELEASED	554829	GDH	EVV	RIV	



TYPE 101



1. UNLESS OTHERWISE SPECIFIED AND/OR INDICATED:

DIMENSIONS ARE TO FACE OF VIEW SHOWN AND AUTOMATICALLY ROUNDED BY COMPUTER FOR INSPECTION (SEE MATH MODEL FOR PRECISE DIMENSIONS). FOR ALL OTHER DIMENSIONS NOT SHOWN BUT REQUIRED FOR TOOL BUILD, SEE MATH MODEL FOR PRECISE TOOL PATH DATA.

2. THIS PRODUCT IS NOT CATEGORIZED AS AN APPEARANCE ITEM, MINOR IMPERFECTIONS INCLUDING, BUT NOT LIMITED TO, FLOW MARKS, COLOR BLEMISHES, GATE VESTIGE, AND SOFT FLASH THAT DO NOT AFFECT THE FIT, FORM, OR FUNCTION OF THE PART ARE PERMISSIBLE PER DPNP-4.7-CS-01.

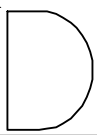
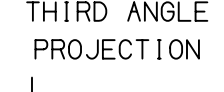

3. THIS PART ACCEPTS THE FOLLOWING COMPONENTS OR EQUIVALENT:

CONNECTOR ASSEMBLIES SHOWN ON TAXIS 35197172 & 35197133

4. CORPORATE BRAND TO BE APPLIED TO PRODUCT DESIGN PER THE LATEST REVISION OF ESD S1085201.

35586485	01	-	103	POLYESTER COMPOUND WHITE	1.163	7.5
35197163	01	-	102	POLYESTER COMPOUND ORANGE	1.196	6.5
35197162	01	-	101	POLYESTER COMPOUND BLACK	1.248	5
PART NO	REV	N/P	TYPE	MATERIAL SPECIFICATION AND COLOR	VOLUME (CM <sup>3</sup> )	$\phi \pm 0.1$

										<div style="border: 1px solid black; padding: 2px; display: inline-block;">1</div> PROCESS SENSITIVE DIMENSION	
DIMENSIONS ENCLOSED IN ( ) INDICATE REFERENCE DIMENSIONS AND NO TOLERANCE LIMITS ARE ESTABLISHED											
DIMENSIONAL RANGE (MM)										CHART E	
FROM TO	> 0	> 20 30	> 30 70	> 70 100	> 100 150	> 150 200	> 200 250	> 250 300	> 300 400		
TOLERANCE UNLESS OTHERWISE SPECIFIED											
	±0.15	±0.2	±0.3	±0.4	±0.5	±0.6	±0.8	±1	±1.2		

LINE DRAWN THROUGH A PART NUMBER INDICATES THAT PHYSICAL PARTS ARE NOT AVAILABLE FOR ORDERING.	
PART NUMBERS THAT DO NOT HAVE A LINE PRESENT INDICATE THAT PHYSICAL PARTS ARE AVAILABLE FOR ORDERING.	
CONTACT ACTIV SALES TO ASSURE AVAILABILITY OF PARTS.	
DWG TYPE	
PART DRAWING	
STYLE	
VOLUME (CM³)	DISTR CODE 
UNLESS OTHERWISE SPECIFIED THIS DOCUMENT IS IN ACCORDANCE WITH ASME Y14.5M-1994 AS AMENDED BY THE 0M GLOBAL DIMENSIONS AND TOLERANCING ADDENDUM-2001. SEPARATE PATTERNS OF FEATURES MAY BE OBTAINED SEPARATELY REGARDLESS OF DATUM REFERENCES.	
ALL DIMENSIONS ARE IN MILLIMETERS	
REFERENCE	
THIRD ANGLE PROJECTION 	DO NOT SCALE USE DATA 

<h1 style="margin: 0;">• APTIV •</h1> <p style="margin: 5px 0;">CONNECTION SYSTEMS</p> <p style="margin: 5px 0;">WARREN, OH</p> <p style="margin: 5px 0;">COPYRIGHT 2020 APTIV. ALL RIGHTS RESERVED.</p> <p style="margin: 10px 0;">THIS DRAWING IS THE PROPERTY OF APTIV AND CONTAINS APTIV CONFIDENTIAL INFORMATION. THE REPRODUCTION, DISTRIBUTION AND UTILIZATION OF THIS DOCUMENT OR ITS RELATED CAD MATH DATA, AS WELL AS COMMUNICATION OF ANY CONTENT TO OTHERS, WITHOUT EXPRESS AUTHORIZATION, IS PROHIBITED.</p>									
							DATE		
DR									
APVD1 GERARDO DAVILA							28SE20		
APVD2 J.S. ALVARADO							28SE20		
APVD3 EDUARDO RUIZ M.							28SE20		
APVD4									
APVD5									
SUBSTANCES OF CONCERN AND RECYCLED CONTENT PER APTIV 10949001									
MATERIAL SEE CHART									
DRAWING NAME									
TAXI LOCK RETAINER SEAL									
DRAWING NUMBER									
35197164									
SIZE	SCALE	FRAME NO	SHEET NO	STG	REV	N/P			
A1	5:1	1 OF 1	1 OF 1	R	02				

# Mouser Electronics

Authorized Distributor

Click to View Pricing, Inventory, Delivery & Lifecycle Information:

[Aptiv:](#)  
[35197162](#)