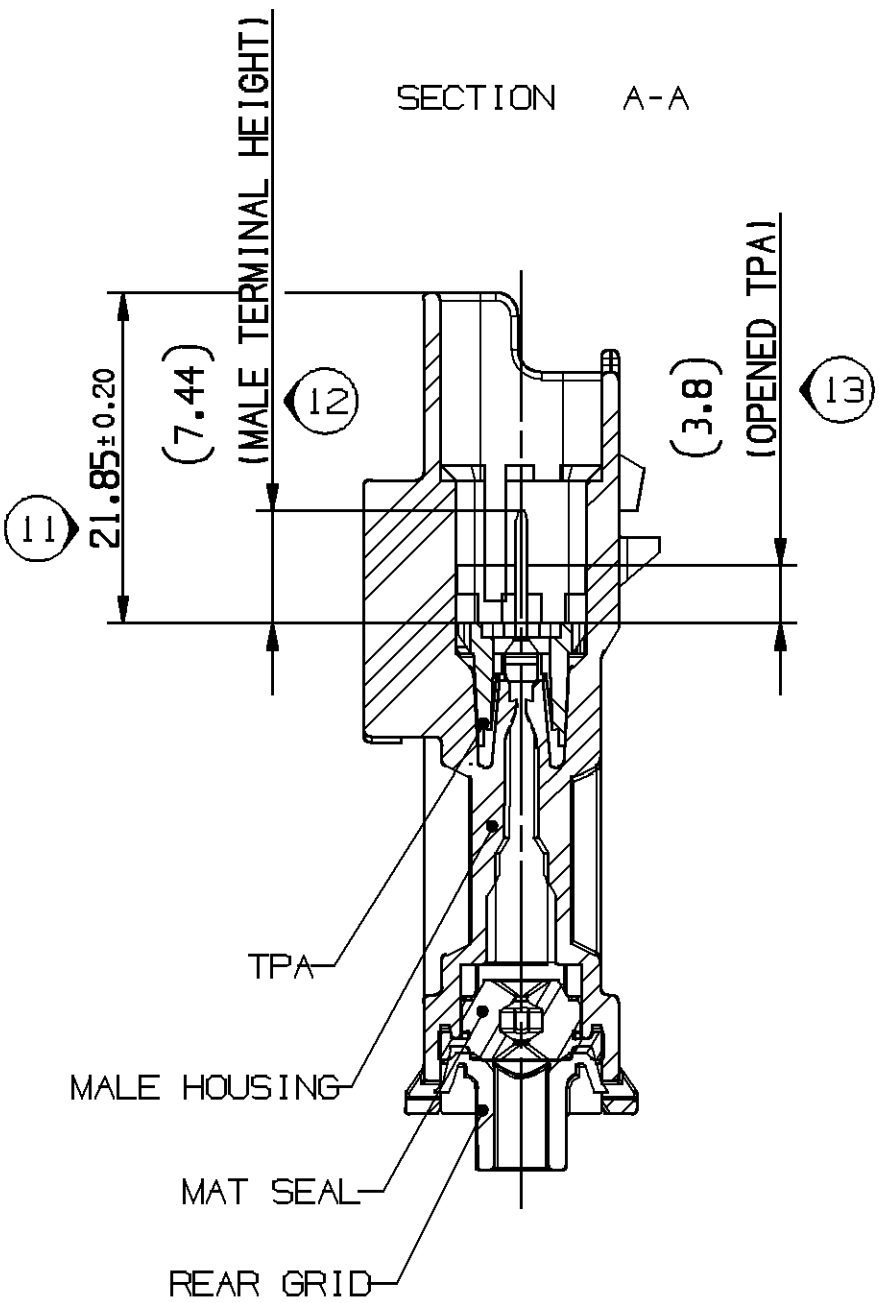
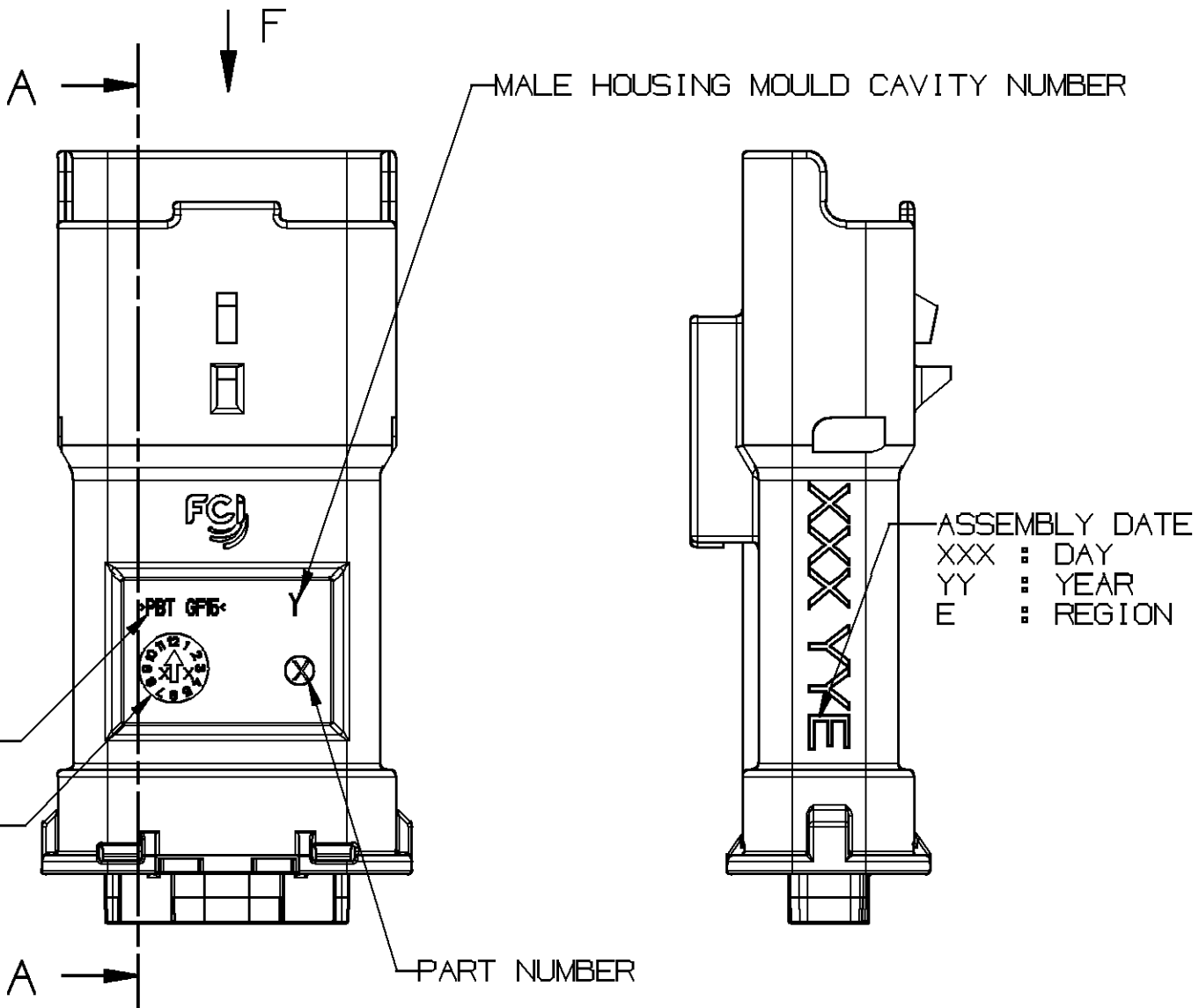
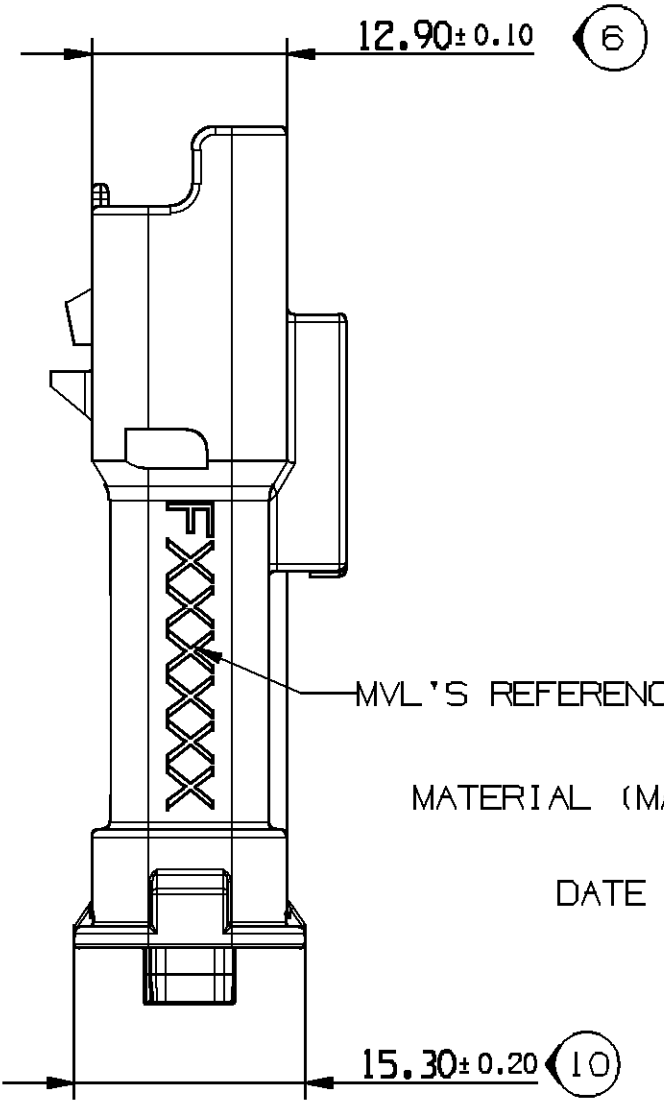
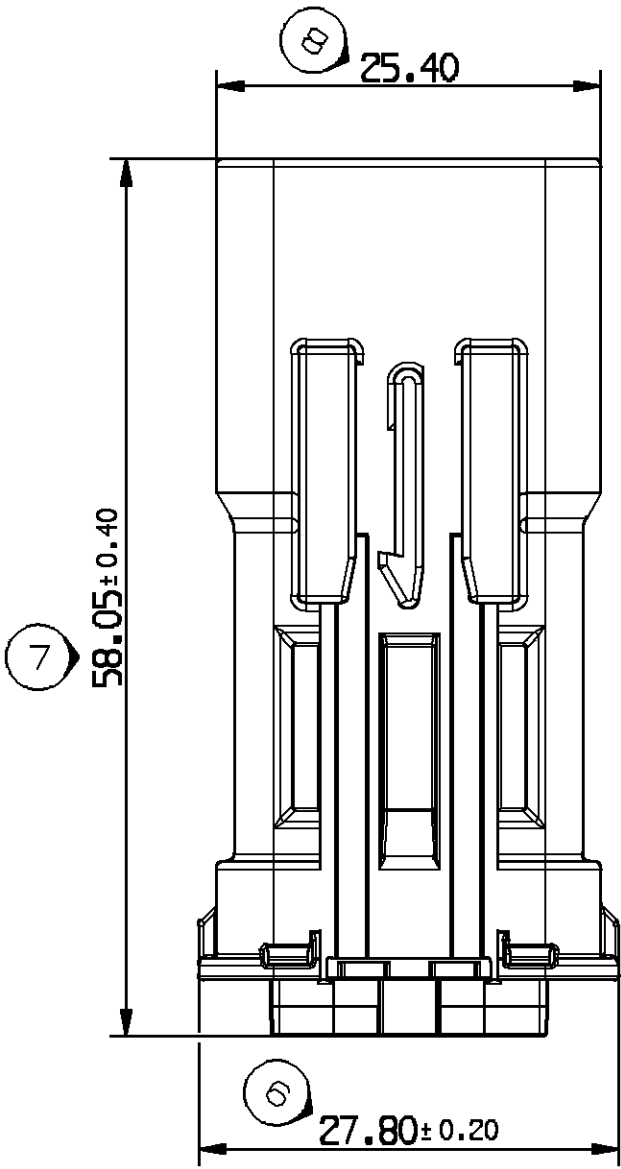
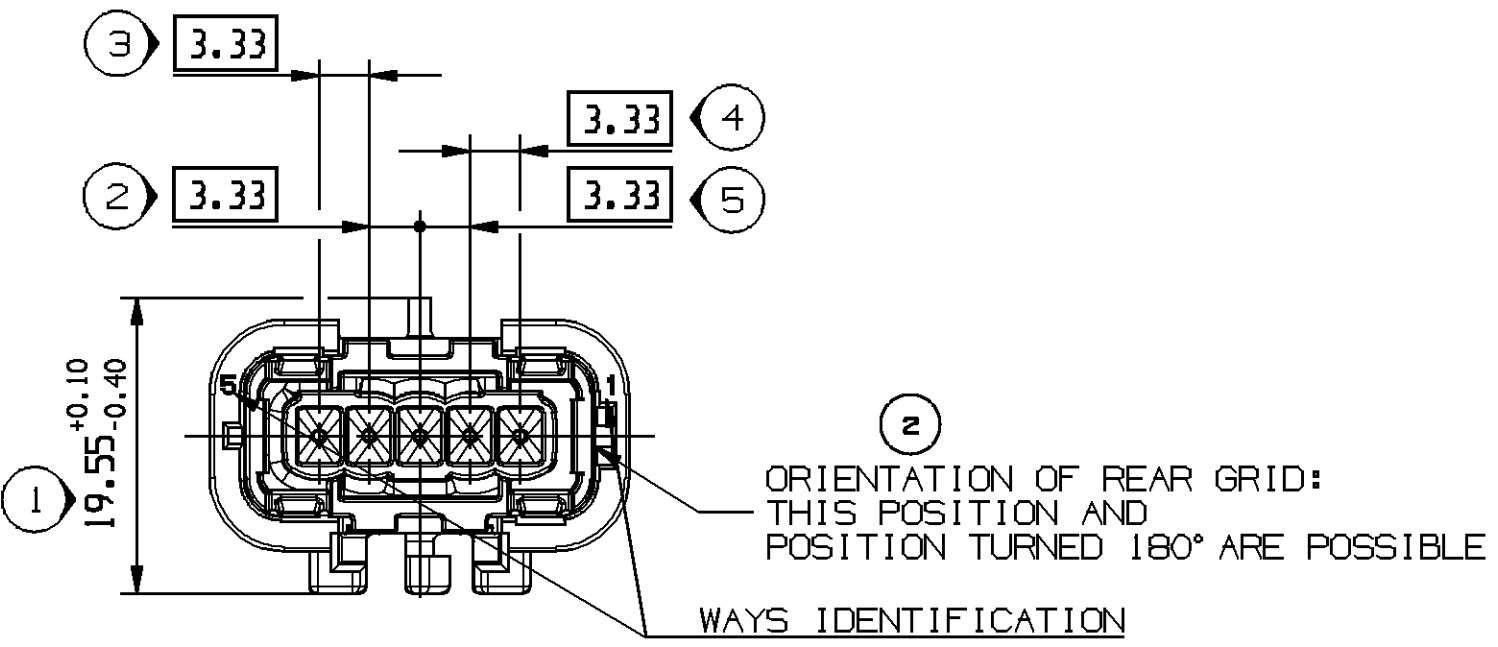
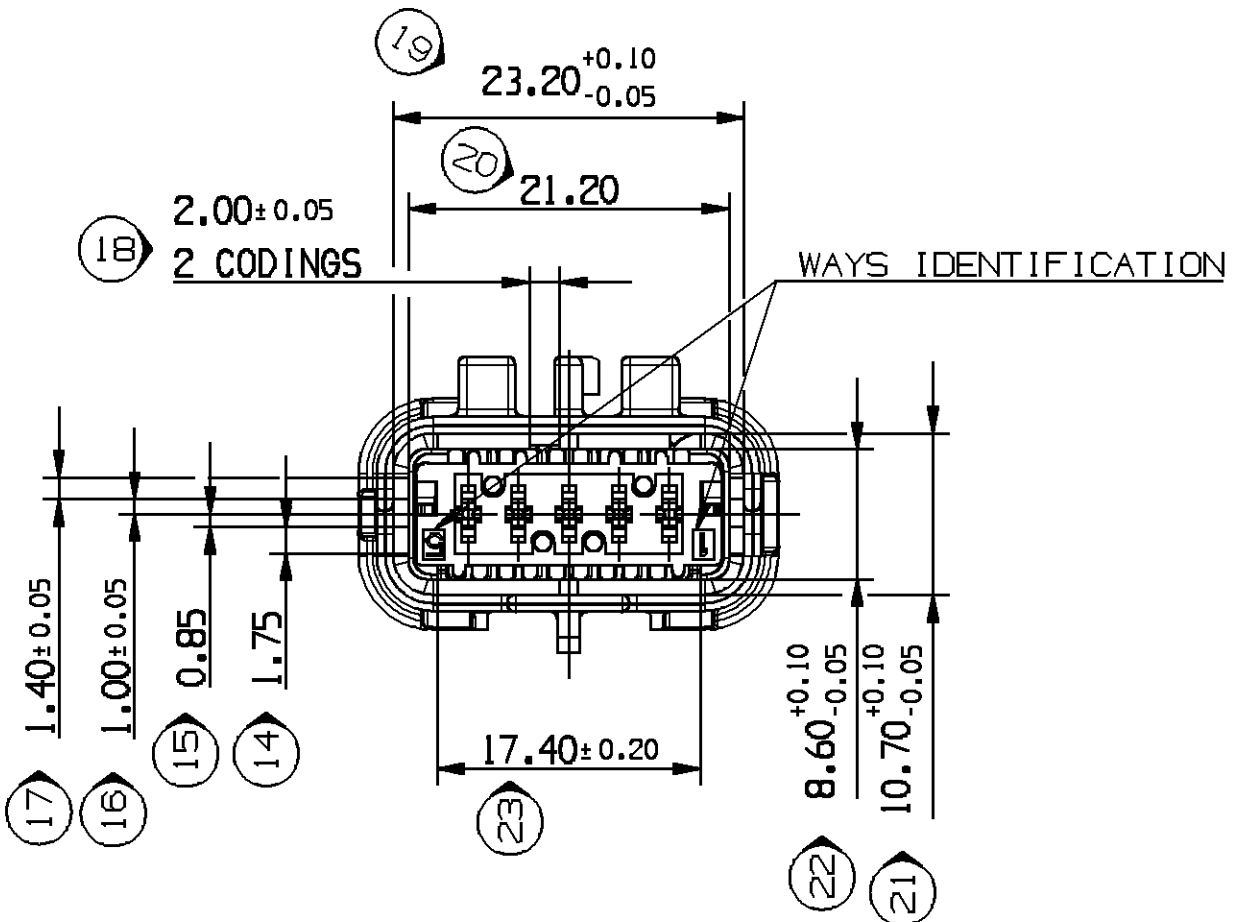


NOTE	SPECIFICATIONS
1	USER'S MANUAL MVL'S REFERENCE: PUL72 - ASSOCIATED PRODUCTS (TERMINAL, PLUG,...) ARE DEFINED IN THE USER'S MANUAL
2	WIRE INSULATION DIAMETER MINI=1.25 MAXI=2.60
3	DELIVERED CONNECTOR WEIGHT : 11 g
4	FEMALE/MALE CONNECTOR MATING FORCE F : 75 N
5	COMPATIBLE WITH CONNECTOR DRAWING PCC0802481

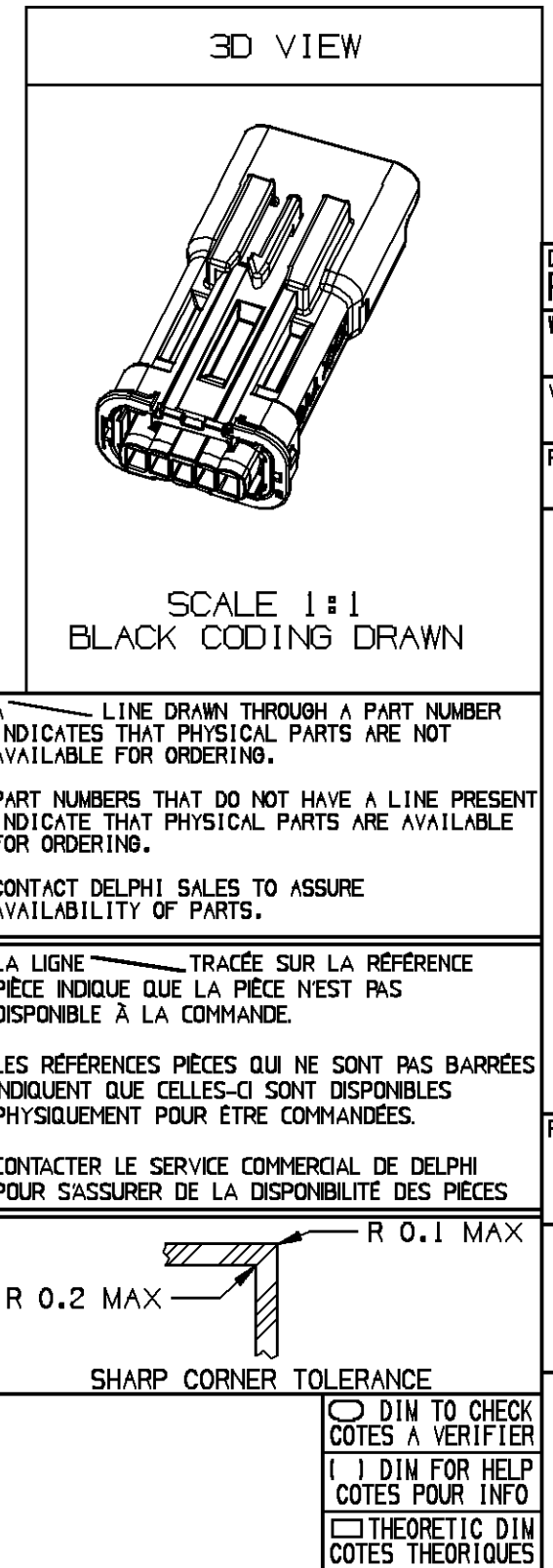
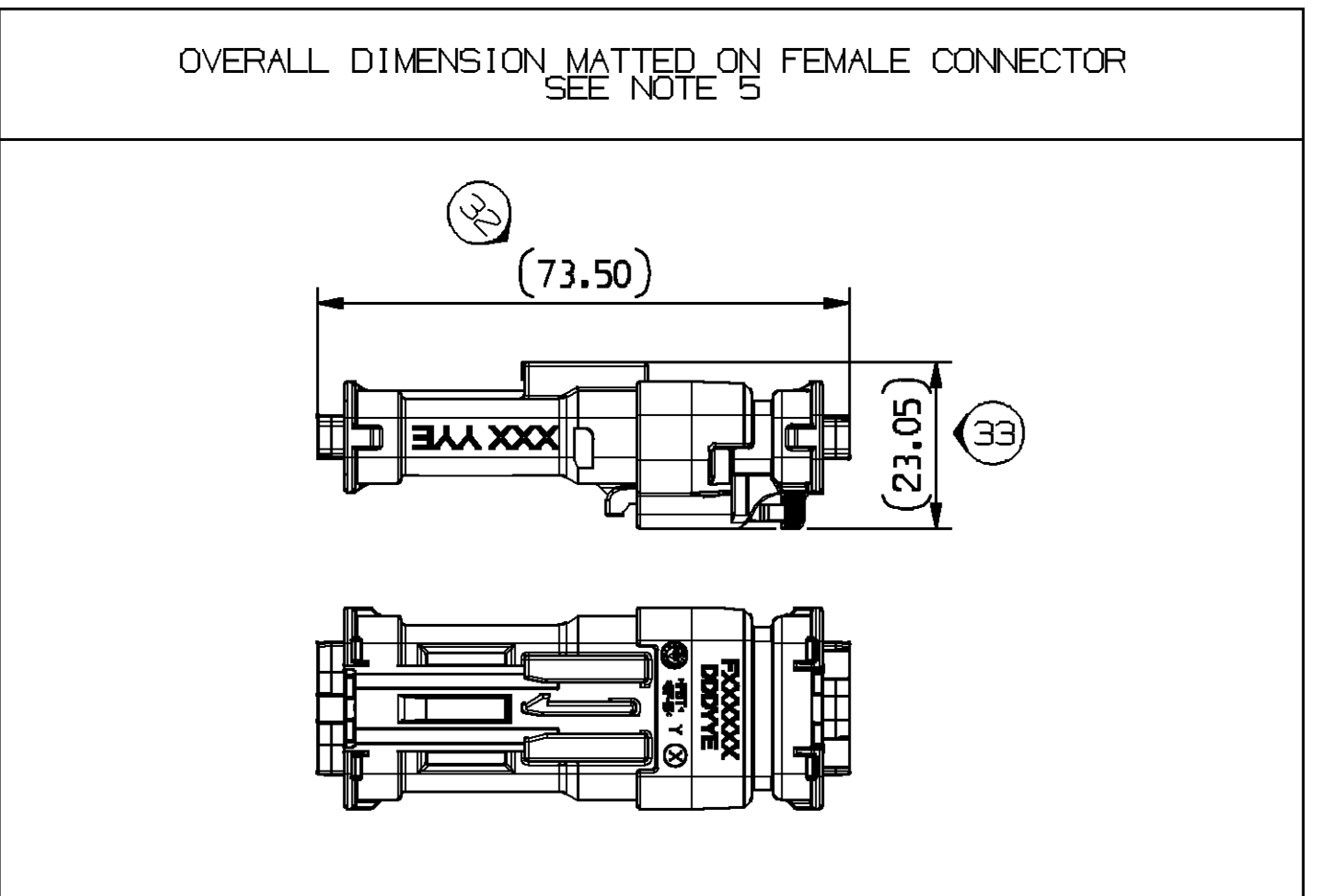
DWG STATUS				ZONE	REVISION HISTORY		AUTH	DR	APVD 1	APVD 2
DATE	STG	REV	N/P	CHG						
29JL14	R	01	-	-	DRAWING NUMBER PCC0816784 BECAME 33517519-CL001			DGL	DGL	DGL
31JL14	R	02	-	-	KEYS OF POLARIZATION OF REAR GRID ARE SUPPRESSED NOTE ADDED FOR REAR GRID DELPHI REFERENCE ADDED IN THE TABLE			SELVA	SANUP	LDIAZ
19FE16	R	02	AA	-	NOTE 1 IN THE TABLE UPDATED			NSUR	SANUP	GJA1



MALE HOUSING	S273700	33521982	PBT GF15	BLACK
	S373700	33521983		BLUE
	S473700	33521984		GREY
	S573700	33521985		RED
	S673700	33521986		PURPLE
TPA	S414700	33521987	PBT GF15	YELLOW
MAT SEAL	C493700	33503346	SILICONE	GREY
REAR GRID	S483700	33512022	PBT GF15	BLACK
DESCRIPTION	MVL SERIAL REF.	DELPHI SERIAL REF. (2)	MATERIAL	COLOUR



(30) 5.25	(31) 7.15	VIEW F TOLERANCES ±0.10 SCALE 1:1	
RED coding	PURPLE coding	-	COLOUR CODING
F443700	F543700	-	PART NUMBER
A	A	-	PART REVISION
33511736	33511737	-	PART NUMBER
01	01	-	PART REVISION
(24) 0.60	(25) 8.70	(26) 6.80	(27) 2.50
(28) 3.70	(29) 5.60	VIEW F TOLERANCES ±0.10 SCALE 1:1	
GREY coding	BLUE coding	BLACK coding	COLOUR CODING
F343700	F243700	F143700	PART NUMBER
A	A	A	PART REVISION
33511735	33511734	13855072	PART NUMBER
01	01	01	PART REVISION



DWG TYP PART DRAWING	DISTR CODE
WEIGHT (GR)	D
VOLUME (CM³)	
ROUTING	
UNLESS OTHERWISE SPECIFIED	
GENERAL TOLERANCES ACCORDING TO: ±0.1 ±2°	
GD&T ACCORDING TO:	
REFERENCE MVL DWG - PCC0816784	
FIRST ANGLE PROJECTION	
DO NOT SCALE	
USE MATH DATA	

<b>DELPHI</b> DELPHI PACKARD ELECTRICAL/ELECTRONIC ARCHITECTURE WARREN, OH COPYRIGHT 2013 DELPHI CORPORATION AND/OR ITS AFFILIATES. ALL RIGHTS RESERVED. REVISÉ 2014 THIS DRAWING IS THE PROPERTY OF DELPHI CORPORATION AND CONTAINS DELPHI CONFIDENTIAL INFORMATION. THE REPRODUCTION, DISTRIBUTION AND UTILIZATION OF THIS DOCUMENT OR ITS RELATED CAD MATH DATA, AS WELL AS COMMUNICATION OF ANY CONTENT TO OTHERS, WITHOUT EXPRESS AUTHORIZATION, IS PROHIBITED. CE PLAN EST LE PROPRIÉTÉ DE DELPHI CORPORATION ET CONTIENT DES INFORMATIONS DELPHI CONFIDENTIELLES. LA REPRODUCTION, LA DISTRIBUTION ET L'UTILISATION DE CE DOCUMENT OU DE SES DONNÉES MATHÉMATIQUES CAD, AINSI QUE LA COMMUNICATION DE TOUT CONTENU À AUTRUI, SANS AUTORISATION EXPRESSE EST INTERDITE.	
DR	SELVA
APVD1	SANUP
APVD2	LYDIE DIAZ
APVD3	PASCAL MENARD
APVD4	
APVD5	
SUBSTANCES OF CONCERN AND RECYCLED CONTENT PER DELPHI 10949001 MATIÈRES PROSCRITES ET CONTENU RECYCLABLE SELON DELPHI 10949001	
DRAWING NAME 5-WAY MALE SEALED CONNECTOR SENSOMATE SICMA 1.5	
DRAWING NUMBER 33517519	
SIZE	A1
SCALE	2:1
FRAME NO	1 OF 1
SHEET NO	1 OF 1
STG	R
REV	02
N/P	AA

# Mouser Electronics

Authorized Distributor

Click to View Pricing, Inventory, Delivery & Lifecycle Information:

[Aptiv:](#)  
[13855072](#)