

MVL-TEILE- NR. MVL-PART- NO.		DELPHI TEILE-NR. PART-NO.		ANSCHLUSS- BEREICH CRIMP SIZE (mm ²)	CRIMP- CODE	DRAHTQUER- SCHNITT WIRE SIZE (mm ²)	ISOLATION INSULATION D (mm)	±0.4	DRAHTCRIMP WIRE CRIMP CH _C	CW _C ±0.05	CH _I ±0.05	CW _I ±0.15	ISOLATIONS CRIMP INSULATIONS CRIMP CRIMP-TYPE	LI	MVL-APPLIKATOR MVL-APPLICATOR
6 000 03 11/14	10864924	15510047		>0.22-0.35	□	0.25	TBD	TBD	TBD	TBD	TBD	TBD	L 0.3 ^{+0.2}	TBD	TBD
6 000 05 11/14	10763182	10751588													
6 000 13 14	33504747														
6 010 02 11/14	10864932	13539675				AWG 22 TXL	1.45-1.65	3.8	1.01±0.03	1.67	2.00±0.05	2.1			
6 010 06 11/14	10775249	10751586		0.5-1.0	□□								L 0.4±0.2		
6 010 14 14	33504723														
6 010 19 11/14	10866290	33504724				0.35	1.2-1.4			1.67	1.75±0.05	1.95			
F088000	33511723														
F188000	33504748			>1-1.5	□□□	0.50	1.4-1.6		1.17 ±0.04	2.07	1.95±0.05	2.30	L UMFASSUNGS- CRIMP WRAP- CRIMP		
F288000	33504749														
						AWG20 TXL	1.6-1.8	4.3	1.17±0.04	2.08	2.15±0.05	2.30		6 520 04 11	
						0.75	1.7-1.9		1.2±0.04	2.08	2.25±0.05	2.35			
						1.00	1.9-2.1		1.25±0.04	2.08	2.45±0.05	2.45	L 0.4±0.2		
						AWG16 TXL	2.05-2.3		1.28±0.05	2.35	2.6 ±0.05	2.70			
						1.4	2.2-2.4	4.3	1.33±0.05	2.37	2.75±0.05	2.8	L 0.4±0.2		
						1.5	2.2-2.4		1.38±0.05	2.37	2.75±0.05	2.8			

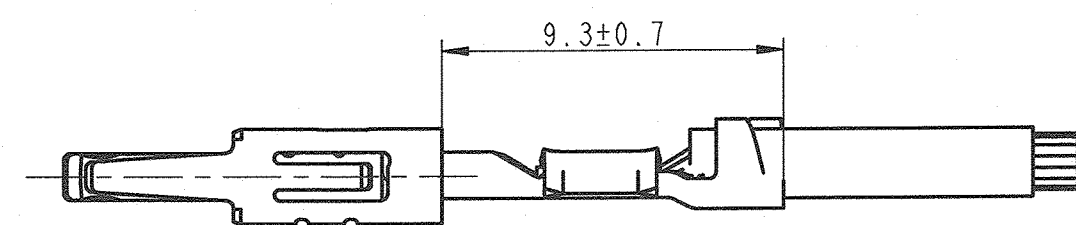


BILD 1: FLACHKONTAKT DCS2-1.5 NORMALE ANWENDUNG
PICTURE 1: FEMALE TERMINAL DCS2-1.5 NORMAL APPLICATION

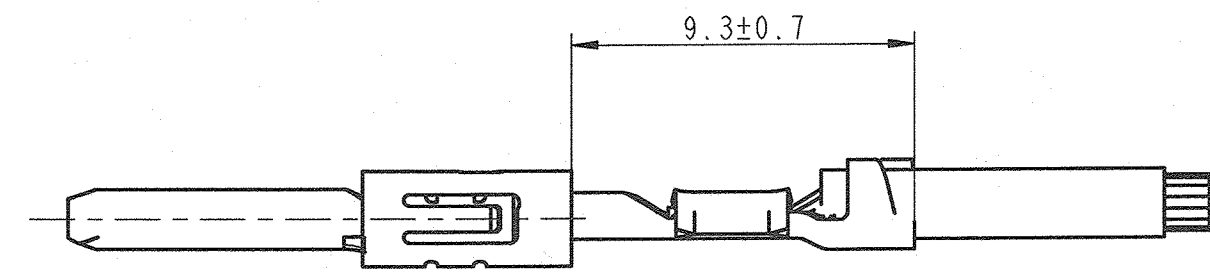
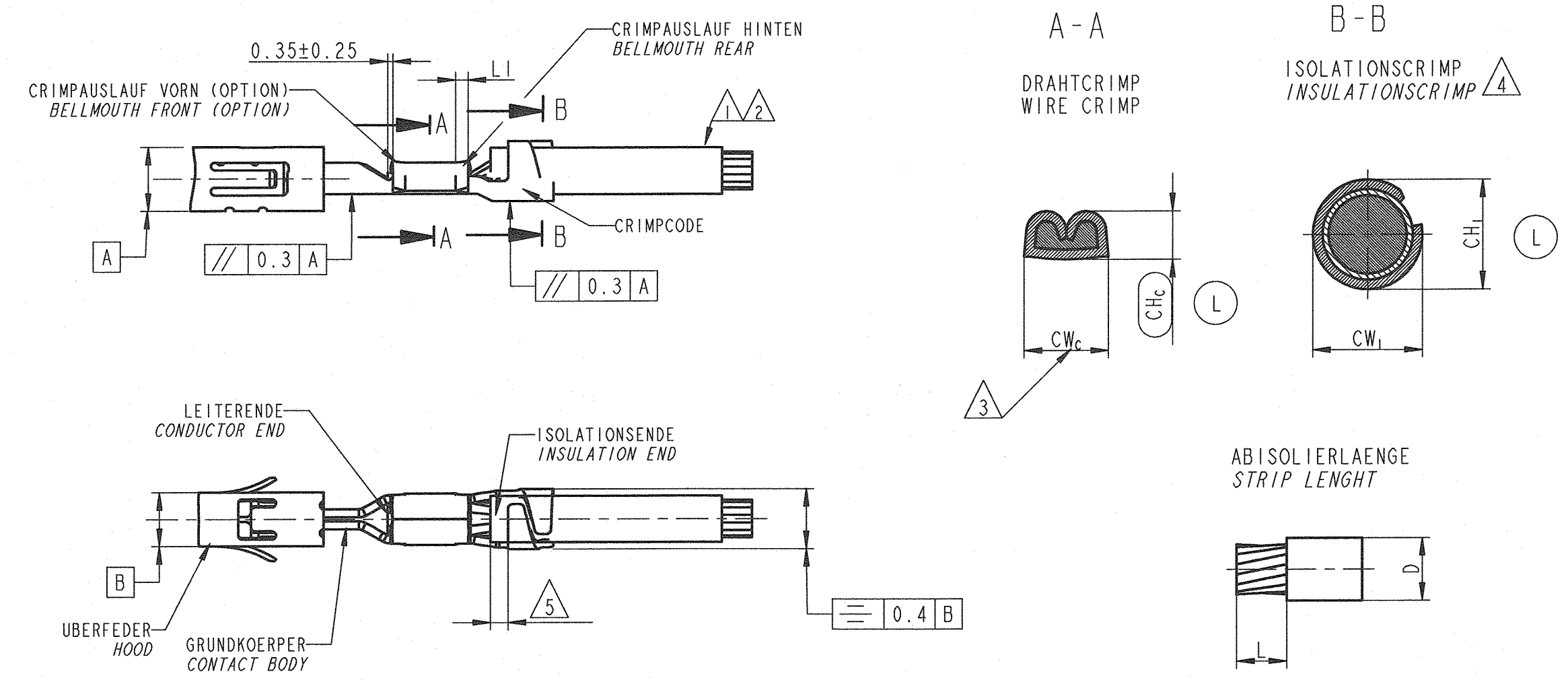


BILD 2: FLACHSTECKER DCS2-1.5 NORMALE ANWENDUNG
PICTURE 2: MALE TERMINAL DCS2-1.5 NORMAL APPLICATION



BEMERKUNGEN / NOTES

1 LEITUNGEN FLR NACH DIN 72551-6, AUSGENOMMEN DIE AWG-LEITUNGEN
WIRE TYPES FLR DIN 72551-6 UNLESS AWG- WIRES/ CABLES

2 AUSREISSKRAFT DES LEITERS AUS DEM DRAHTCRIMP SIEHE: 1 EXTRACTION FORCE OF WIRE OUT THE WIRE CRIMP SEE: DIN EN 60 352-2.

3 CW_C EFFEKTIVE CRIMPBREITE DRAHTCRIMP / EFFECTIVE CRIMP WIDTH WIRE CRIMP

4 ES GELTEN DIE ALLGEMEINEN RICHTLINIEN ZUR VERARBEITUNG VON KONTAKTEN MIT OFFENEN CRIMPHUELSEN NACH DELPHI- VERARBEITUNGS-
SPEZIFIKATION 9 902 0020 UND DIE DIN EN 60 352-2.
GENERAL GUIDLINES FOR THE APPLICATION OF CONTACTS WITH OPEN CRIMP BARRELS IS VALID TO DELPHI SPECIFICATION1: 9 902 00 20 AND DIN EN 60352-2.

16-18104	05.07.16	L	F-H 8 H7 G8 D6	Column Delphi part no. added; CWI had a tolerance field ±0.1; LI for wire range (>0.22-0.35)mm ² was 0.25±0.15; CWI for 0.5mm ² was 2.15 and for 1mm ² was CWI 2.55; wire crimp height and wire crimp width were changed for the wire crimp range (>1-1.5)mm ² ; new applicator is necessary for (>1-1.5)mm ² ; section A-A CHC was SC- dimension; Section B-B: CHI was (CHI)	P. Nuetzel	R. Reger	St. Müller			
14-06082	20.05.14	X		CHC and CWC were complete changed; the values CHC were as follow: 0.35mm ² and AWG22 was 1.06±0.03; 0.5mm ² and AWG 20 was 1.2±0.5; 0.75mm ² was 1.27±0.05; 1.0mm ² was 1.35±0.05; the values CWC was for the crimp range (>0.2-0.35) mm ² 1.6±0.25 and for the 2 other crimp ranges 2.0±0.25; the Insulation crimp height CHI was as follow: for 0.35mm ² and AWG22- 1.8±0.2; for 0.5- 1.95±0.1/-0.05, for AWG 20- 2.1, for 0.75- 2.25±0.1/-0.05 for 1mm ² - 2.45±0.1/-0.05; for AWG16 was the value 2.7±0.1; for 1.4mm ² - and 1.5mm ² - 2.7±0.1; Values for CWI were as follow: 0.35 mm ² and AWG 22: 1.8±0.2 (0.5-1.0)mm ² and AWG 20: 2.2±0.3 (>1-1.5)mm ² and AWG 16: 2.8±0.05	St. Müller	P. Nuetzel	F. Pacher			
ECN-NO. ECN NUMBER	DATE DATUM	DD/ MM / YY	REVISION INDEX	POSITION POSITION	CHANGE DESCRIPTION ÄNDERUNG			DRAWN BY GEZ.	CHK. BY GEZ.	APPR. BY GEZ.
PRODUCT SPEC. PRODUKT SPECIFIK.	PACKAGING SPEC. VERPACKUNGS SPECIFIK.	APPLICATION SPEC. ANWENDUNGS SPECIFIK.	COPYRIGHT DELPHI CORPORATION AND/OR ITS AFFILIATES. ALL RIGHTS RESERVED. REVISED THIS DRAWING IS THE PROPERTY OF DELPHI CORPORATION. THE REPRODUCTION, DISTRIBUTION AND UTILIZATION OF THIS DOCUMENT OR ITS RELATED CAD DATA DISTRIBUTION AND UTILIZATION OF THIS DOCUMENT OR ITS RELATED CAD DATA, AS WELL AS COMMUNICATION OF ANY CONTENT TO OTHERS, WITHOUT EXPRESS AUTHORIZATION IS PROHIBITED.					DELPHI CORPORATION DELPHI PACKARD ELECTRICAL/ELECTRONIC ARCHITECTURE NÜRNBERG GERMANY		
TOLERANCES TOLERANZEN	MATERIAL MATERIAL	COLOR FARBE	TOOL NO. Werkzeug Nr.	ECO Loc. Code STANDORT CODE	GN	SURFACE FINISH OBERFLÄCHE			DELPHI CAD SYSTEM	
COUNTERPART N. GEGENSTÜCK N.	DATE DATUM	NAME NAME	TITLE BENENNUNG	ISO PROJECTION ISO PROJEKTION			DIMENSION IN MILLIMETERS BEMASSUNG IN MILLIMETERN		DWG SIZE FORMAT	
DO NOT SCALE DRAWING ZEICHNUNG NICHT VERMESSEN	DATE DATUM	NAME NAME	TITLE BENENNUNG	DRAWING NUMBER ZEICHN. NUMMER			9 084 10 00		SHEET BLATT	
DRAWN BY GEZ.	26.03.08	A. Bauer	CRIMP- SPEC. FLKT. UND FLST. DCS2-1.5 NWD	FILE NAME DATEI NAME			90841000.LC		SCALE M: 10:1	
CHECKED BY GEZ.	26.03.08	P. Nuetzel	CRIMP SPEC. FEMALE AND MALE DCS2-1.5 NWP							
APPROVED BY GEZ.	26.03.08	J. Muehl.	ESR NO. ESR NUMBER							

11		10		9		8		7		6		5			
MVL-TEILE- NR. MVL-PART- NO.	DELPHI TEILE-NR. PART-NO:	ANSCHLUSS- BEREICH CRIMP SIZE (mm ²)	CRIMP- CODE	DRAHTQUER- SCHNITT WIRE SIZE (mm ²)	ISOLATION D INSULATION D (mm)	L ±0.4	DRAHTCRIMP WIRE CRIMP CH _C ±0.04 CW _C ±0.05	ISOLATIONS CRIMP INSULATIONS CRIMP CH _I ±0.05 CW _I ±0.15	CRIMP TYPE	L _I ±0.2	MVL-NR. MVL-NO.	VERITAS-NR. VERITAS-NO.	FARBE COLOR	ISOLATIONS-Ø INSULATION-Ø	MVL-APPLIKATOR MVL-APPLICATOR
6 000 12 34 6 000 15 34 6 010 01 34 6 010 13 34 6 010 07 34	10847167 10811962 13760268 33504736 10779703	0.5-1.0	00	0.50	1.4-1.6	4.3	1.17 2.07	3.15 3.20	UMFASSUNGS- CRIMP WRAP CRIMP	0.4	6 099 39 28	17 541	GRAU GREY	1.4-1.9	6 520 04 14

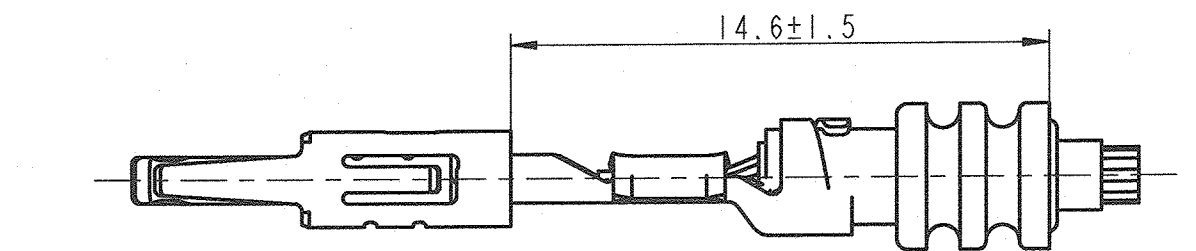
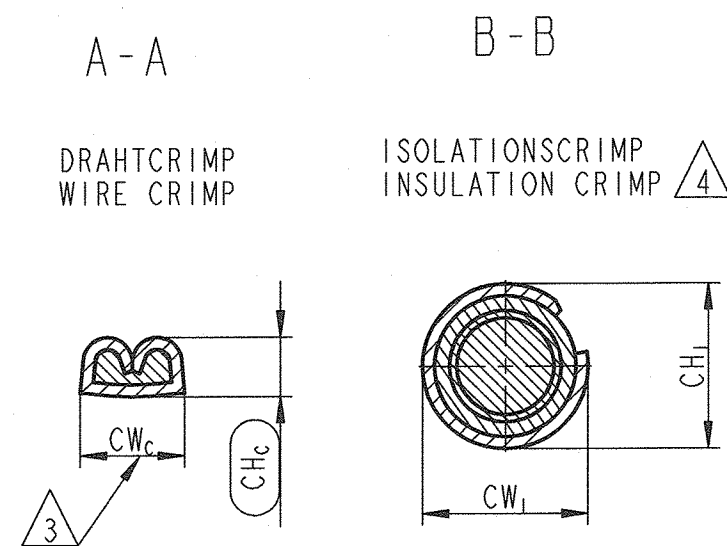
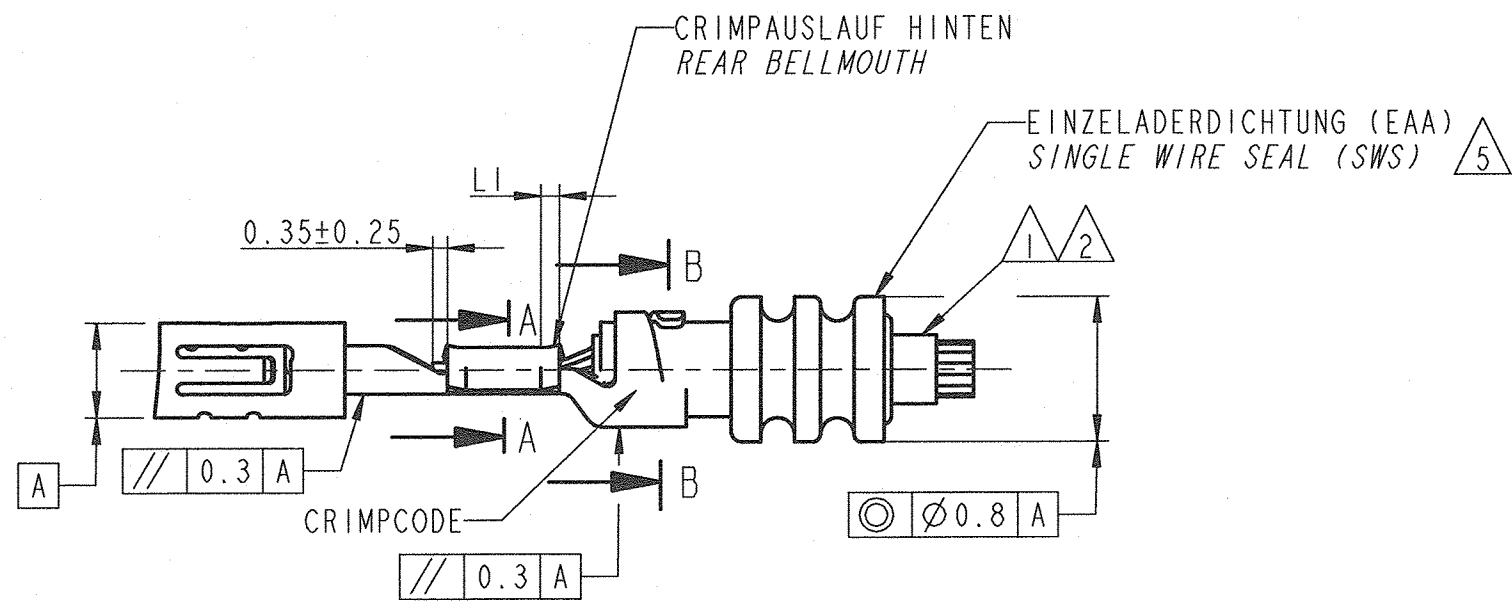


BILD1. FLACHKONTAKT DCS2-1.5 MIT EINZELDICHUNG
PICTURE1. FEMALE TERMINAL DCS2-1.5 WITH SINGLE WIRE SEAL

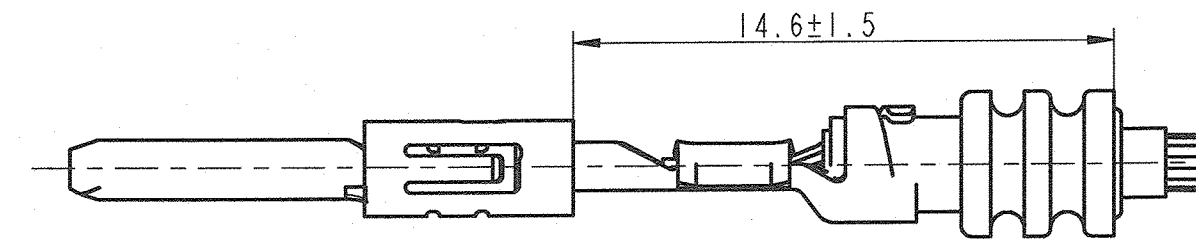
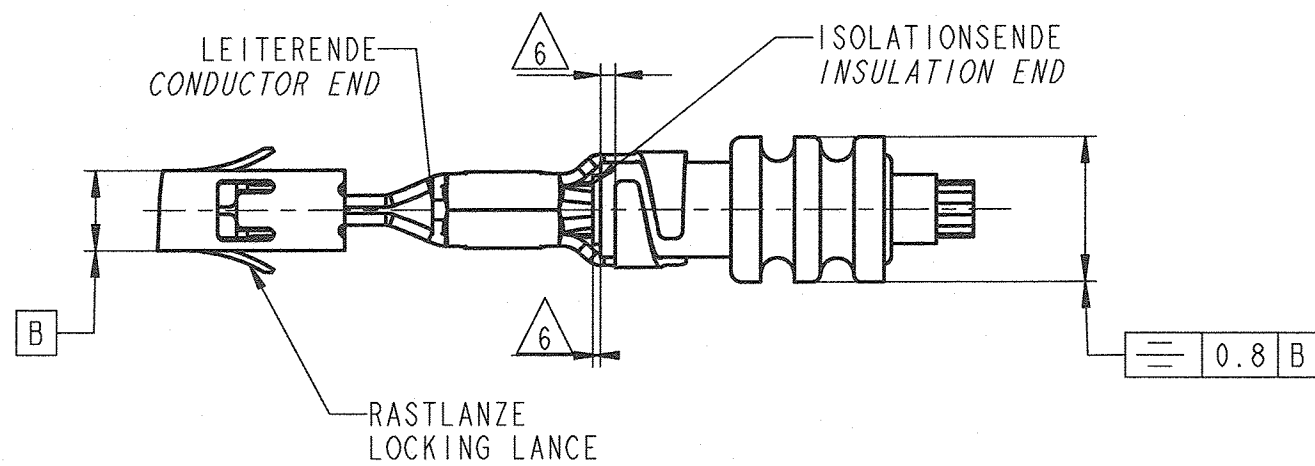


BILD2. FLACHSTECKER DCS2-1.5 MIT EINZELDICHUNG
PICTURE 2. MALE TERMINAL DCS2-1.5 WITH SINGLE WIRE SEAL



ABISOLIERLAENGE
STRIP LENGTH

NUR GUELTIG NUR FUER SONDERANWENDUNG DELPHI/ FRANCE
ONLY AVAILABLE FOR SPECIAL APPLICATION DELPHI/ FRANCE

BEMERKUNGEN / NOTES

- 1 LEITUNGEN FLR NACH DIN 72551-6, AUSGENOMMEN DIE AWG-LEITUNGEN
WIRE TYPES FLR DIN 72551-6 UNLESS AWG- WIRES/ CABLES
- 2 AUSREISSKRAFT DES LEITERS AUS DEM DRAHTCRIMP SIEHE: 1 EXTRACTION FORCE OF WIRE OUT THE
WIRE CRIMP SEE: DIN EN 60 352-2.
- 3 CW_C EFFEKTIVE CRIMPBREITE DRAHTCRIMP 1 EFFECTIVE CRIMP WIDTH WIRE CRIMP
- 4 DIE VERWENDUNG DER EINZELDICHUNGEN IST ABHÄNGIG VOM ISOLATIONS-DURCHMESSER DER LEITUNG UND NICHT VOM LEITUNGSQUERSCHNITT. DURCH DEN CRIMPVORGANG DARF DIE EINZELDICHUNG IM BEREICH DES BUNDDURCHMESSERS NICHT EINGESCHNITTEN ODER VERLETZT WERDEN. DRUCKSTELLEN UND MARKIERUNGEN SIND ZULAESSIG, WENN SIE NICHT ZUR RISSBILDUNG ODER DURCHTRENNEN DER DICHUNG FUEHREN.
THE APPLICATION OF SINGLE WIRE SEALS IS DEPENDS ON THE INSULATION DIAMETER AND NOT FROM THE WIRE SECTION. AFTER CRIMPING THE SWS DO NOT HAVE VISIBLE CUTS OR NOTCHES AROUND THE DIAMETER OF COLLAR. ONLY PRESSURE POINTS OR MARKS ALLOWED, WHICH CAN NOT CAUSE TEARING OR SPLITTING OF IN THE LONG TERM.
- 5 ES GELTEN DIE ALLGEMEINEN RICHTLINIEN ZUR VERARBEITUNG VON KONTAKTEN MIT OFFENEN CRIMPHUELSEN NACH DELPHI- VERARBEITUNGS-SPEZIFIKATION 9 902 0020, DIE ALLGEMEINEN RICHTLINIEN ZUR VERARBEITUNG VON EINZELDICHUNGEN 9 902 00 30 SOWIE DIE DIN EN 60 352-2. GENERAL GUIDLINES FOR THE APPLICATION OF CONTACTS WITH OPEN CRIMP BARRELS IS VALID TO DELPHI SPECIFICATION: 9 902 00 20, THE GENERAL GUIDLINES FOR APPLICATIONS WITH SINGLE WIRESEALS 9 902 00 30 AND DIN EN 60352-2.

16-1804	05.07.16	L	Column with Delphi part no. added (see table); CWI was 3.25±0.15	P. Nuetzel	R. Reger	St. Müller		
14-00082	20.005.14	K	CHW WAS 1.2±0.05 and CWW was 2±0.25;	St. Müller	P. Nuetzel	F. Pacher		
12-00079	15.02.12	H	CH _I was changed to 3.3±0.15; Notes were updated					
ECN-NO. ECN NUMBER	DATE DATUM	DD / MM / YY INDEX	REVISION POSITION	CHANGE DESCRIPTION ÄNDERUNG		DRAWN BY GEZ.	CHK. BY GEZ.	APPR. BY GEZ.
PRODUCT SPEC. PRODUKT SPECIFIK.	PACKAGING SPEC. VERPACKUNGS SPECIFIK.		APPLICATION SPEC. ANWENDUNGS SPECIFIK.	COPYRIGHT DELPHI CORPORATION AND/OR ITS AFFILIATES. ALL RIGHTS RESERVED. REVISED THIS DRAWING IS THE PROPERTY OF DELPHI CORPORATION. THE REPRODUCTION, DISTRIBUTION AND UTILIZATION OF THIS DOCUMENT OR ITS RELATED CAD DATA, AS WELL AS COMMUNICATION OF ANY CONTENT TO OTHERS, WITHOUT EXPRESS AUTHORIZATION IS PROHIBITED.		DIESE ZEICHNUNG IST EIGENTUM DER FIRMA DELPHI UND EXTERNELI DELPHI VERTRÄGLICHE LIEFERUNGEN. DIE REPRODUKTION, VERTEILUNG UND NUTZUNG DESSES DOKUMENTES ODER DEREN INHOLDENDE CAD DATEN, ODER AUCH ALS KOMMUNIKATION VON BELIEBIGEN ANSATZ ZU ANDERE, IST OHNE RECHTIGERGEBUNG DURCH DIE DELPHI CORPORATION UNTERSAGT.		
TOLERANCES -- TOLERANZEN	MATERIAL : MATERIAL : ---		SURFACE FINISH OBERFLÄCHE		CAD SYSTEM			
COUNTERPART N. GEGENSTÜCK N.	COLOUR : FARBE : ---		---		DELPHI DELPHI PACKARD ELECTRICAL/ELECTRONIC ARCHITECTURE NUREMBERG GERMANY			pro / eng.
DO NOT SCALE DRAWING ZEICHNUNG NICHT VERMESSEN	TOOL NO. WERKZEUG N.		ECO Loc. Code STANDORT CODE GN		C ISO PROJECTION ISO PROJEKTION			DWG SIZE FORMAT DIMENSION IN MILLIMETERS BEMASSUNG IN MILLIMETERN
DRAWN BY GEZ.	DATE DATUM	NAME NAME	TITLE BENENNUNG		DRAWING NUMBER ZEICHN. NUMBER			SHEET BLATT
CHECKED BY GEZ.	26.03.08	A. Bauer	CRIMP- SPEZ. FLKT. UND FLST. DCS2-1.5 WD		9 084 10 00			of 3
APPROVED BY GEZ.	26.03.08	P. Nuetzel	CRIMP SPEC. FEMALE AND MALE DCS2-1.5 WP		FILE NAME DATEI NAME			SCALE M: 10:1
	26.03.08	J. Muehl.	ESR NO. ESR NUMBER		CAT. NO. KATALOG N.		90841000_L.C	

Mouser Electronics

Authorized Distributor

Click to View Pricing, Inventory, Delivery & Lifecycle Information:

[Aptiv:](#)
[10864924](#)