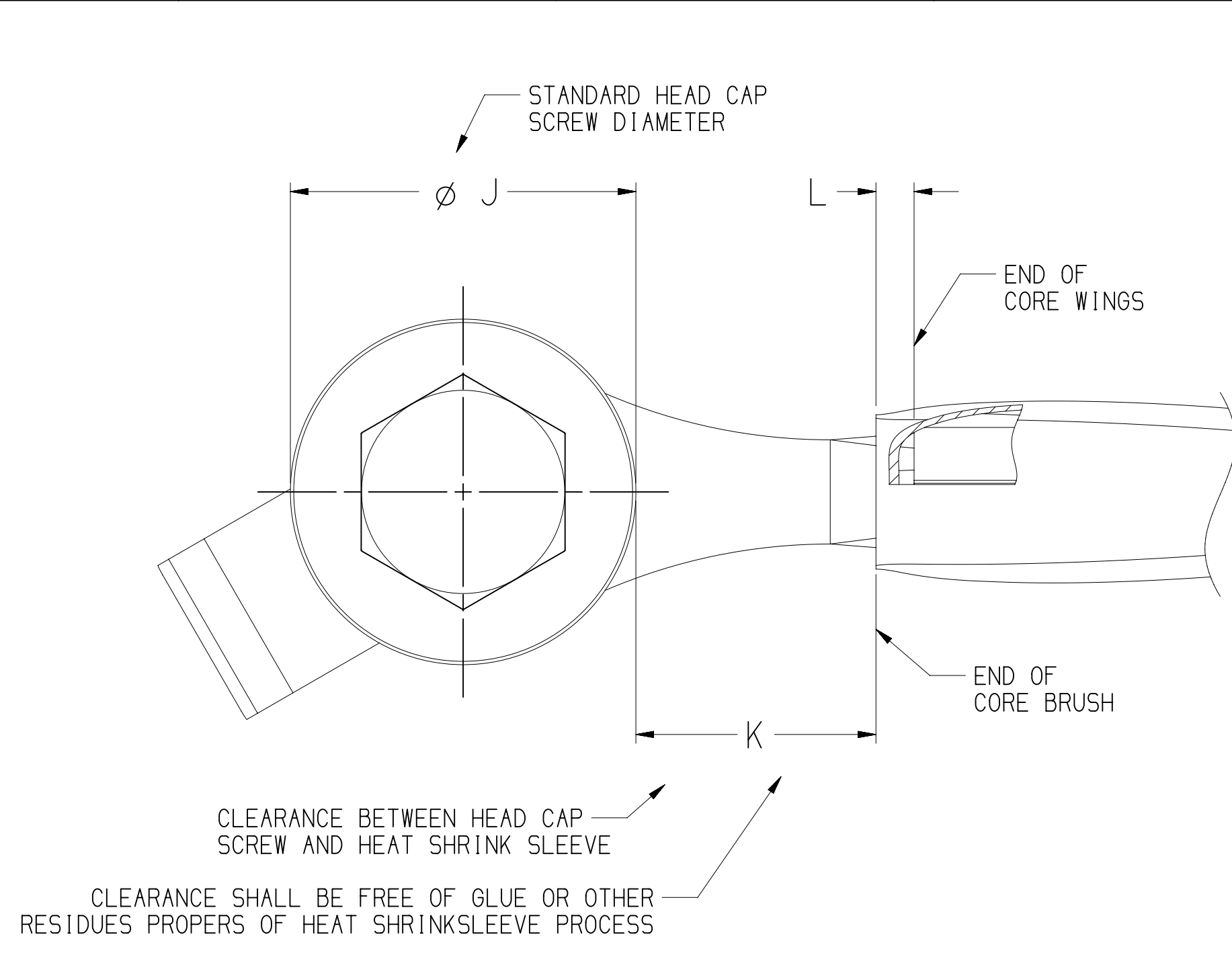
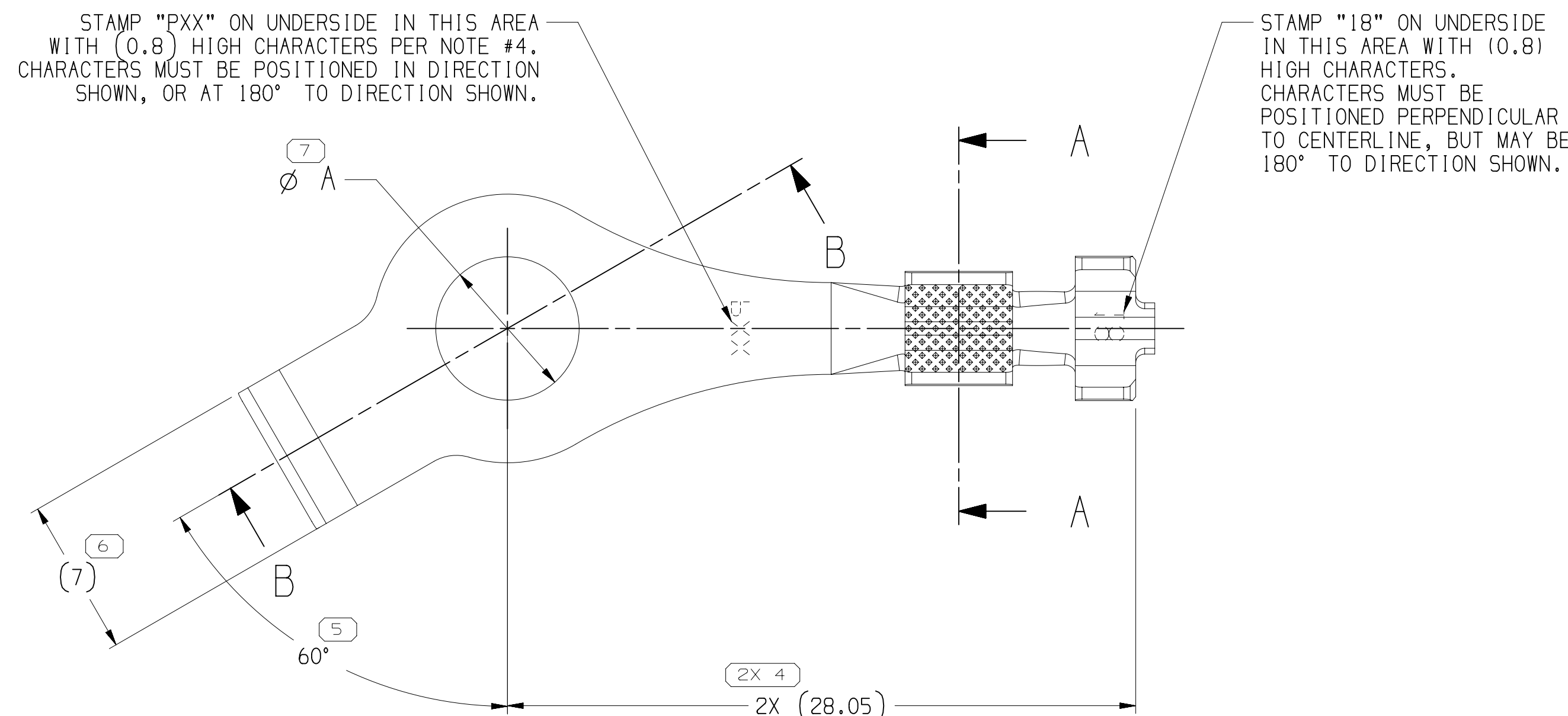
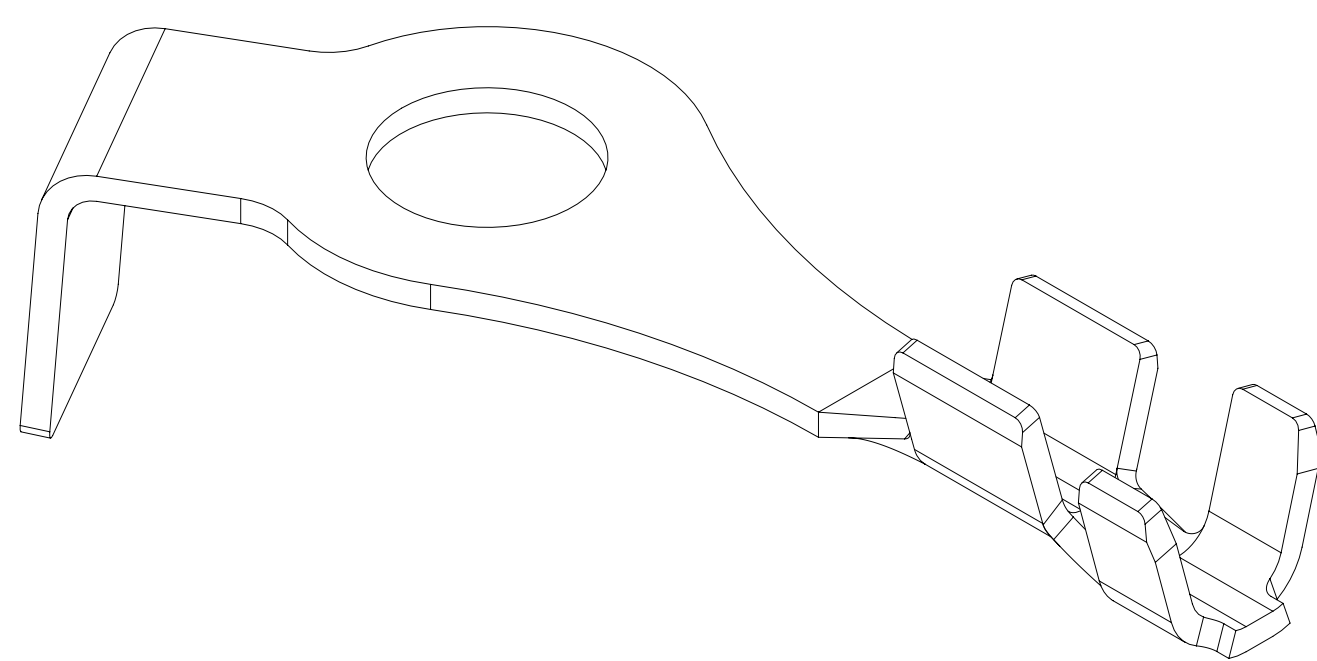


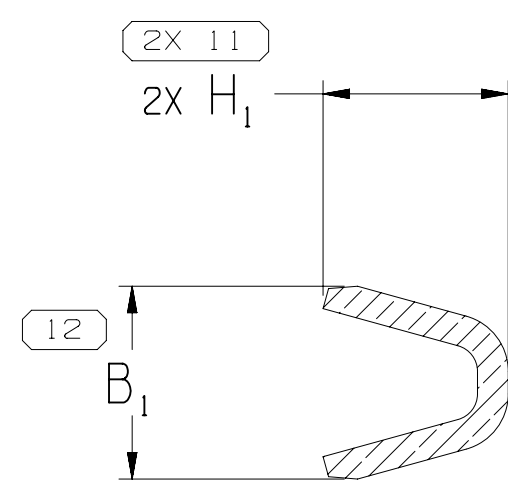
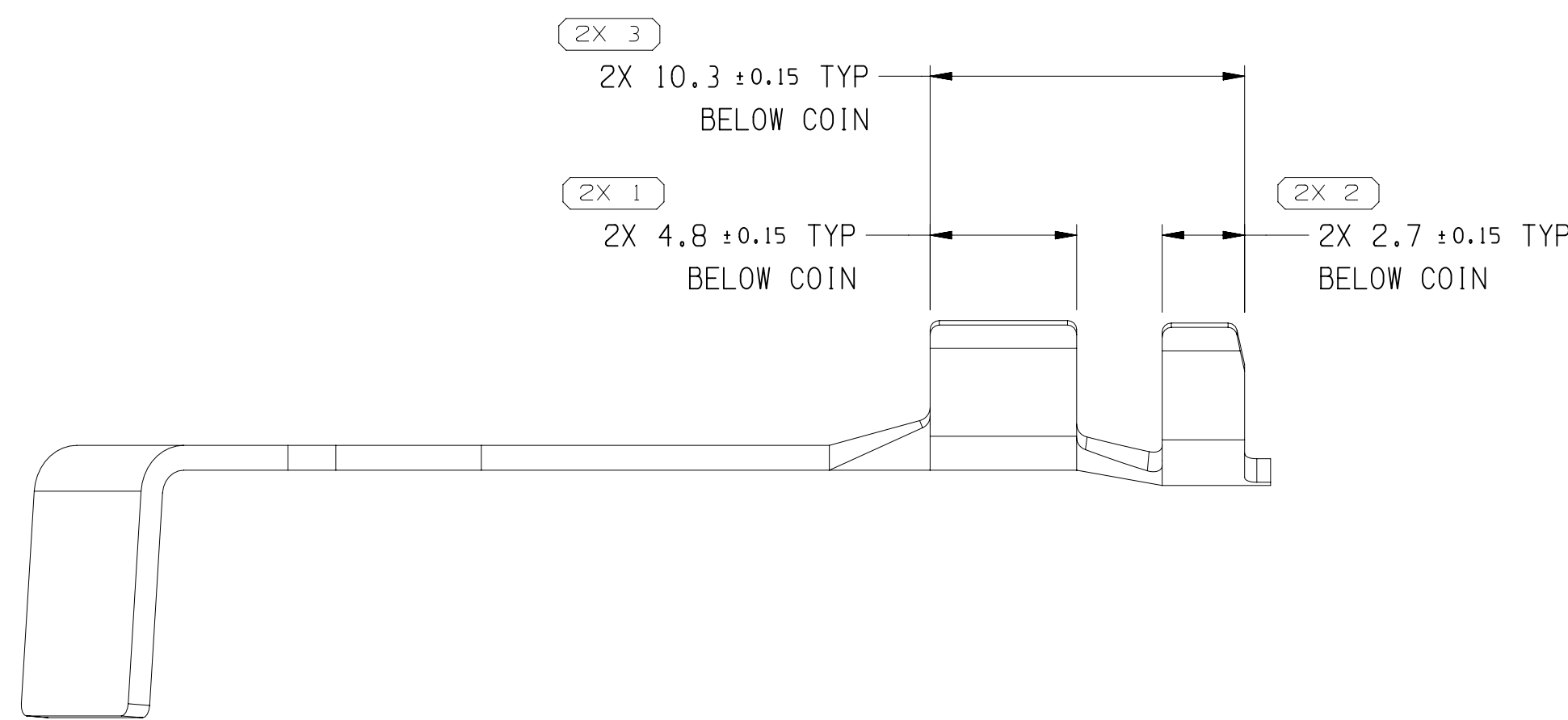
16 15 14 13 12 11 10 9 8 7 6 5 4 3 2 1



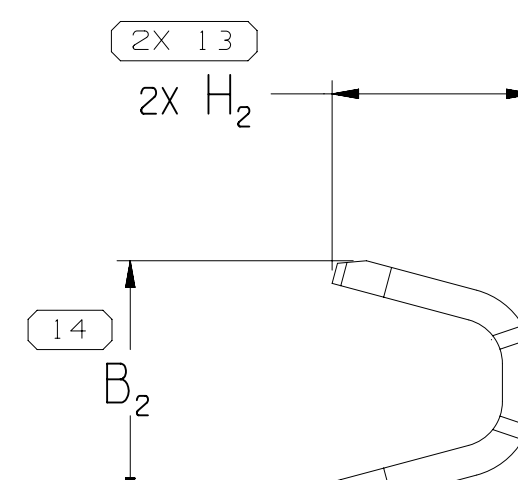
NECK CLEARANCE VIEW



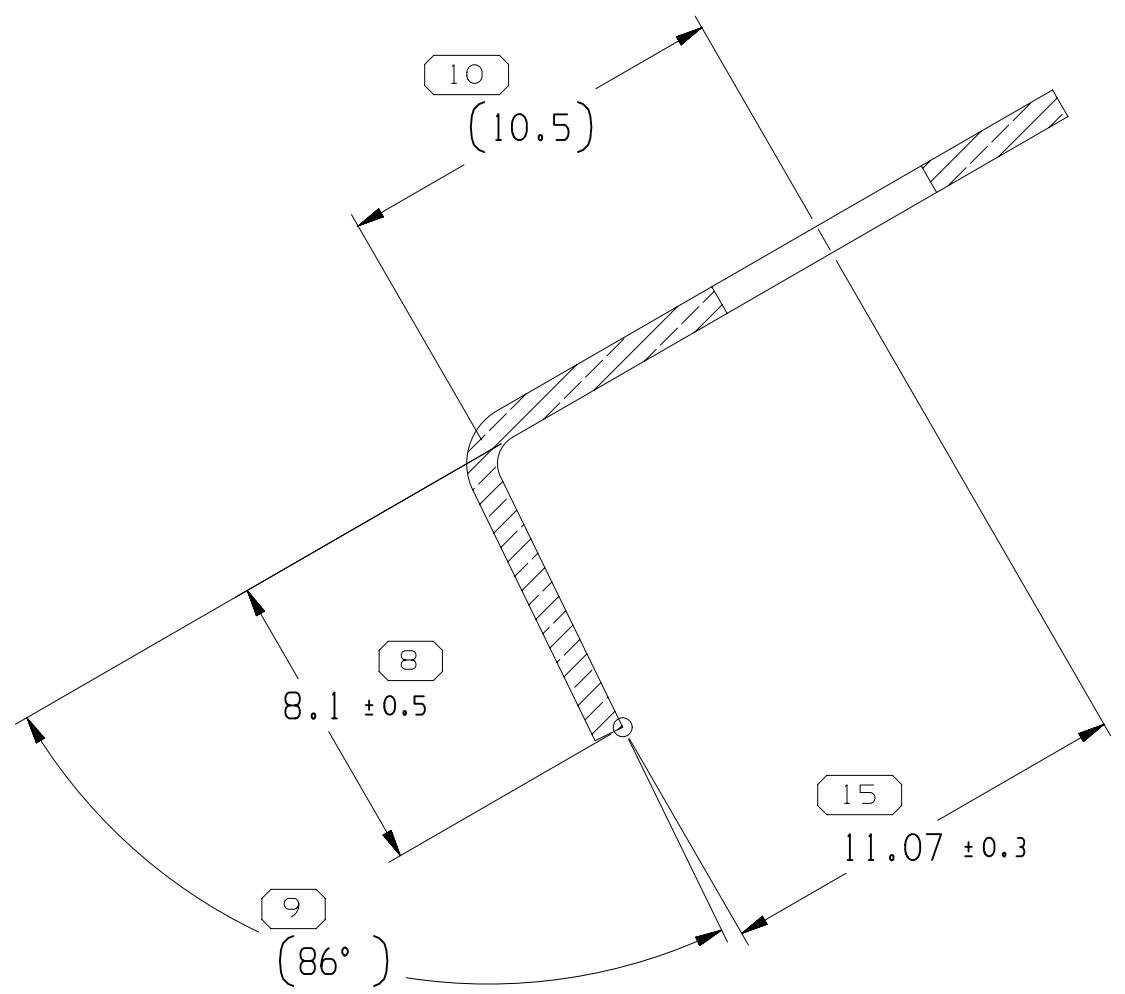
TYPE 201



SECTION A-A
CORE WINGS
VIEW



INSULATION WINGS
VIEW



SECTION B-B

NOTES

- UNLESS OTHERWISE SPECIFIED AND/OR INDICATED:
 - DIMENSIONS ARE TO FACE OF VIEW SHOWN AND AUTOMATICALLY ROUNDED BY COMPUTER FOR INSPECTION (SEE MATH MODEL FOR PRECISE DIMENSIONS). FOR ALL OTHER DIMENSIONS NOT SHOWN BUT REQUIRED FOR TOOL BUILD, SEE MATH MODEL FOR PRECISE TOOL PATH DATA.
- VISIBLE CRACKS ARE NOT PERMISSIBLE.
- R 0.4 PERMISSIBLE ON ALL "SHARP" CORNERS.
- "PXX" INDICATES "P" PLUS LAST TWO DIGITS OF MAKE DIE SERIES NUMBER (P01, P02, P03, ETC.).
- PARTS ARE SYMMETRICAL ABOUT CENTERLINE.
- TERMINAL SHALL BE FREE DEBRIS, RESIDUAL ABRASIVE MATERIALS, CORROSION PRODUCTS AND ANY EXTERNAL RESIDUES, NO LUBE EXCESS IS PERMISSIBLE.
- PARTS MUST BE FREE OF BURRS, OR OTHER IMPERFECTIONS THAT AFFECT FUNCTION OR FIT OF PARTS.

7 PROCESS SENSITIVE DIMENSION	
DIMENSIONS ENCLOSED IN () INDICATE REFERENCE DIMENSIONS AND NO TOLERANCE LIMITS ARE ESTABLISHED	
FROM 0 TO 12	CHART D > 12
TOLERANCE UNLESS OTHERWISE SPECIFIED	±0.1 ±0.2
ANGULAR TOLERANCE	±2°

THIRD ANGLE PROJECTION	DO NOT SCALE	USE MATH DATA
1	2	3

•APTIV• CONNECTION SYSTEMS WARREN, OH COPYRIGHT 2019 APTIV. ALL RIGHTS RESERVED. THIS DRAWING IS THE PROPERTY OF APTIV AND CONTAINS APTIV CONFIDENTIAL INFORMATION. THE REPRODUCTION, DISTRIBUTION AND UTILIZATION OF THIS DOCUMENT OR ITS RELATED CAD DATA, AS WELL AS COMMUNICATION OF ANY CONTENT TO OTHERS, WITHOUT EXPRESS AUTHORIZATION, IS PROHIBITED.	
DR: DANIEL ALVAREZ APVD1: CARLOS DELGADILLO APVD2: ANGELES GALLEGOS APVD3: ANGELES GALLEGOS APVD4: ANGELES GALLEGOS APVD5: ANGELES GALLEGOS	DATE: 23JA19 23JA19 23JA19 23JA19 23JA19
SUBSTANCES OF CONCERN AND RECYCLED CONTENT PER APTIV 10949001	
MATERIAL: SEC CHART	
DRAWING NUMBER: TAXI TERM RING SN	
35201848	
SIZE: A0	SCALE: 5:1
FRAME NO: 1	SHEET NO: 1 OF 1
STG: R	REV: 04

6.4	1/4	M6
Ø A ±0.15/0	STANDARD	METRIC
HOLE CLOSE FIT	SCREW/STUD SIZE	

35272345	03	AA	201	0.813 X 55.31MM	TIN PLATED COPPER ALLOY	0.75 - 1.00	18	-	X	-	-	X	X	-	5.1	6.45	4.9	5.32	13.6	9.45	1.5
PART NO	REV	N/P	TYPE	MAT'L SIZE	MAT'L SPEC	SIZE (MM)	ID	M5	M6	M8	+	-	DOWN	UP	B1 ± 0.3	B2 ± 0.3	(H1)	(H2)	Ø J	K	L
						CABLE		SCREW/STUD SIZE			TAB ANGLE		TAB POSITION								

Mouser Electronics

Authorized Distributor

Click to View Pricing, Inventory, Delivery & Lifecycle Information:

[Aptiv:](#)
[35272345](#)