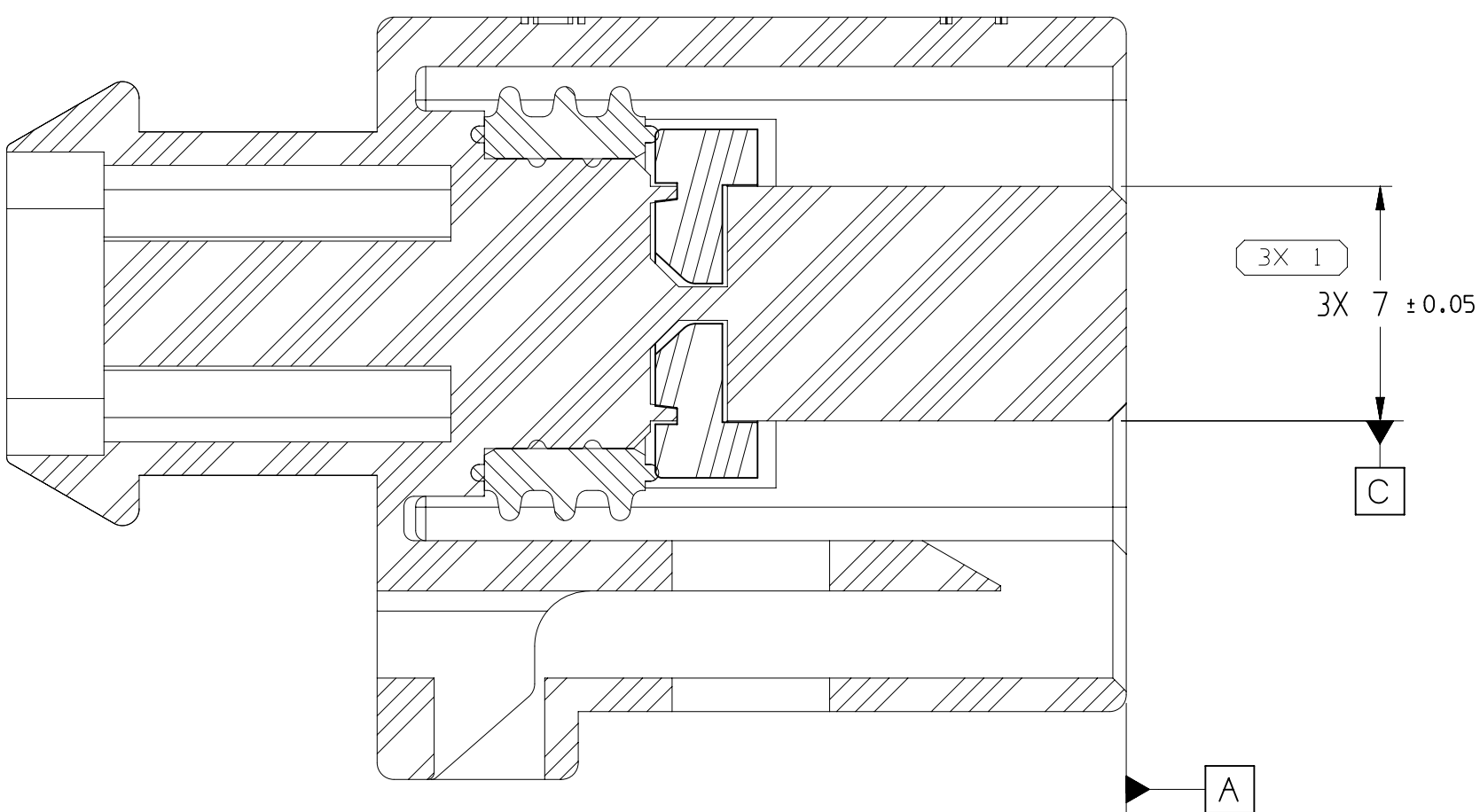
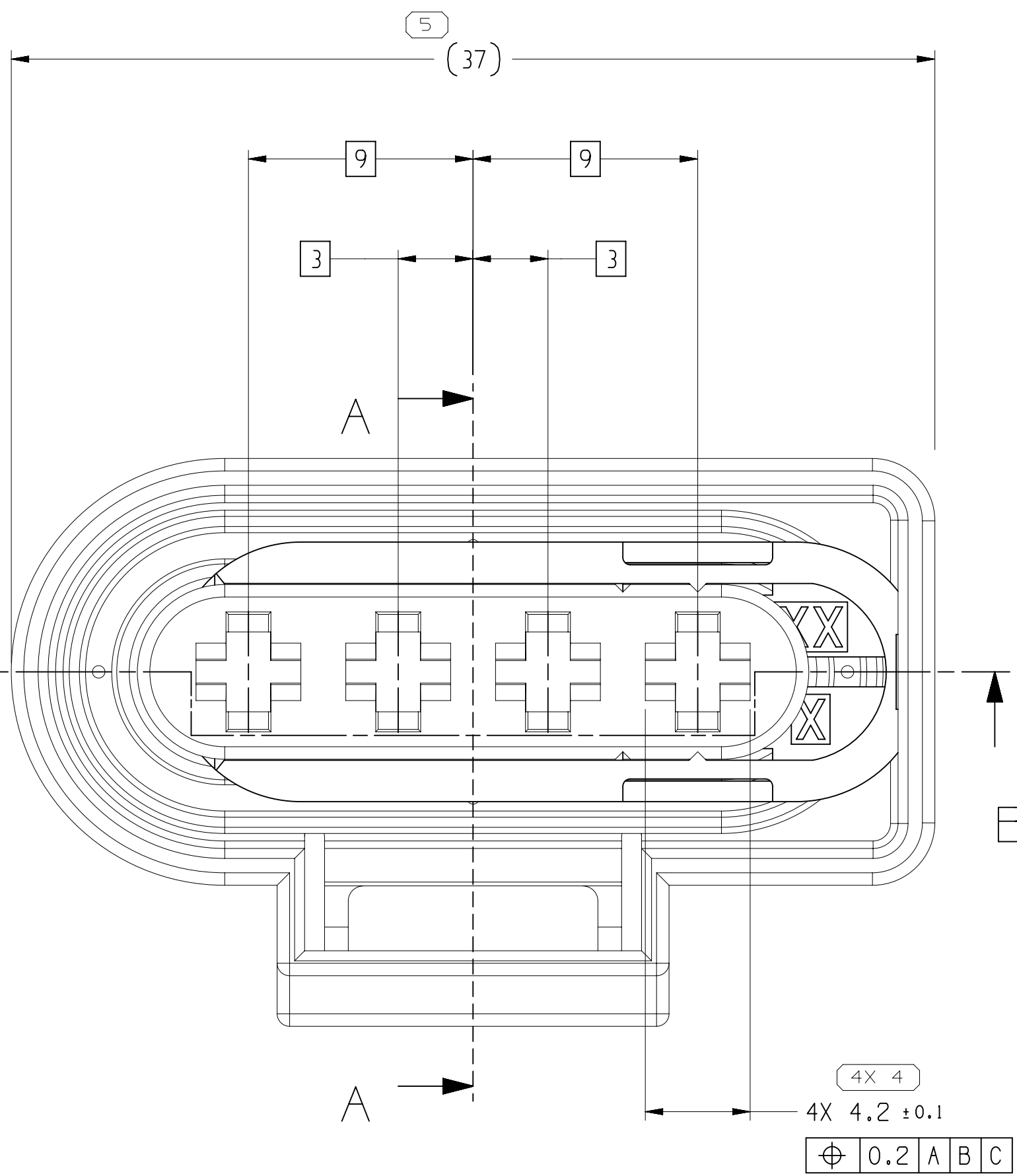
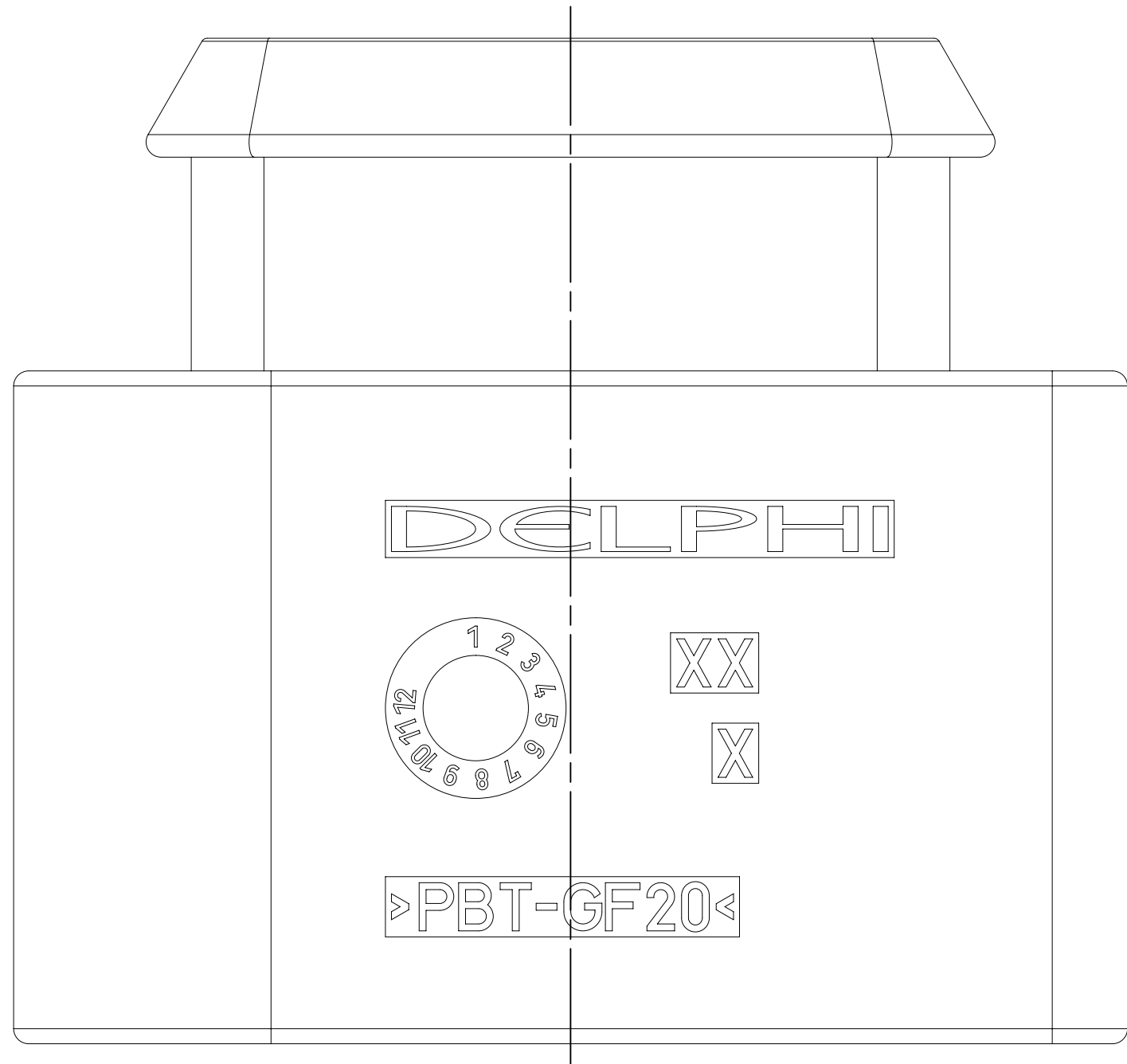
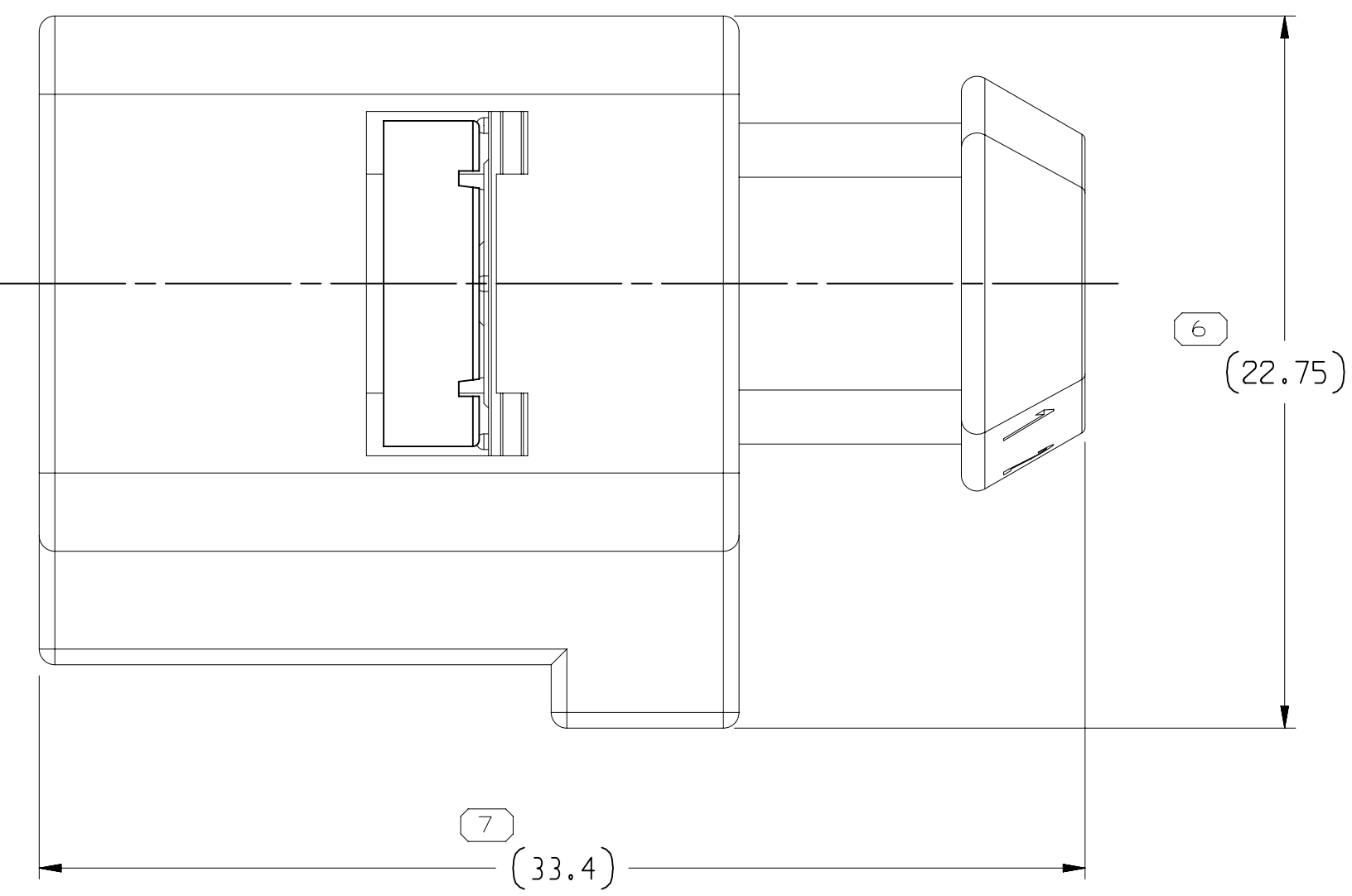
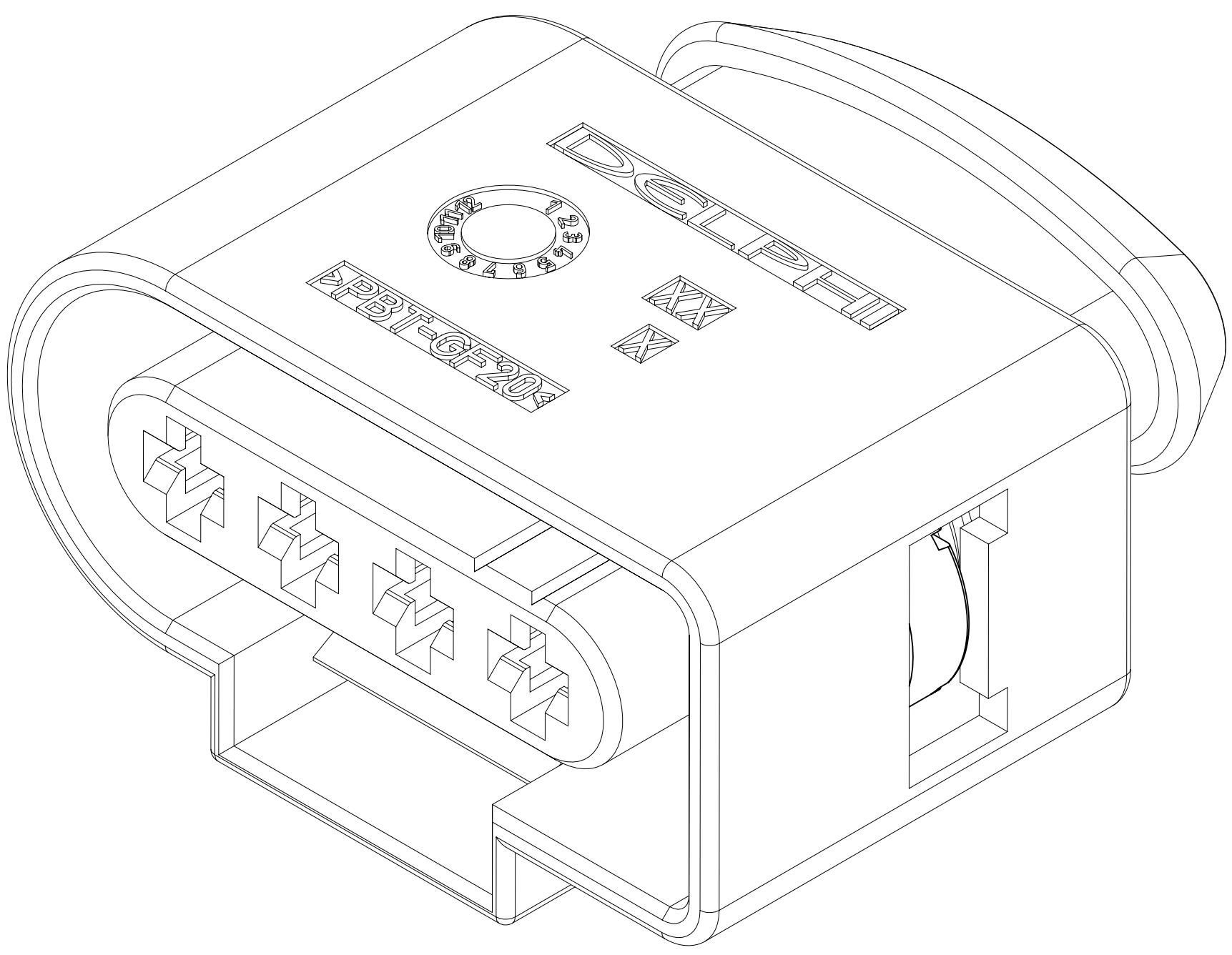
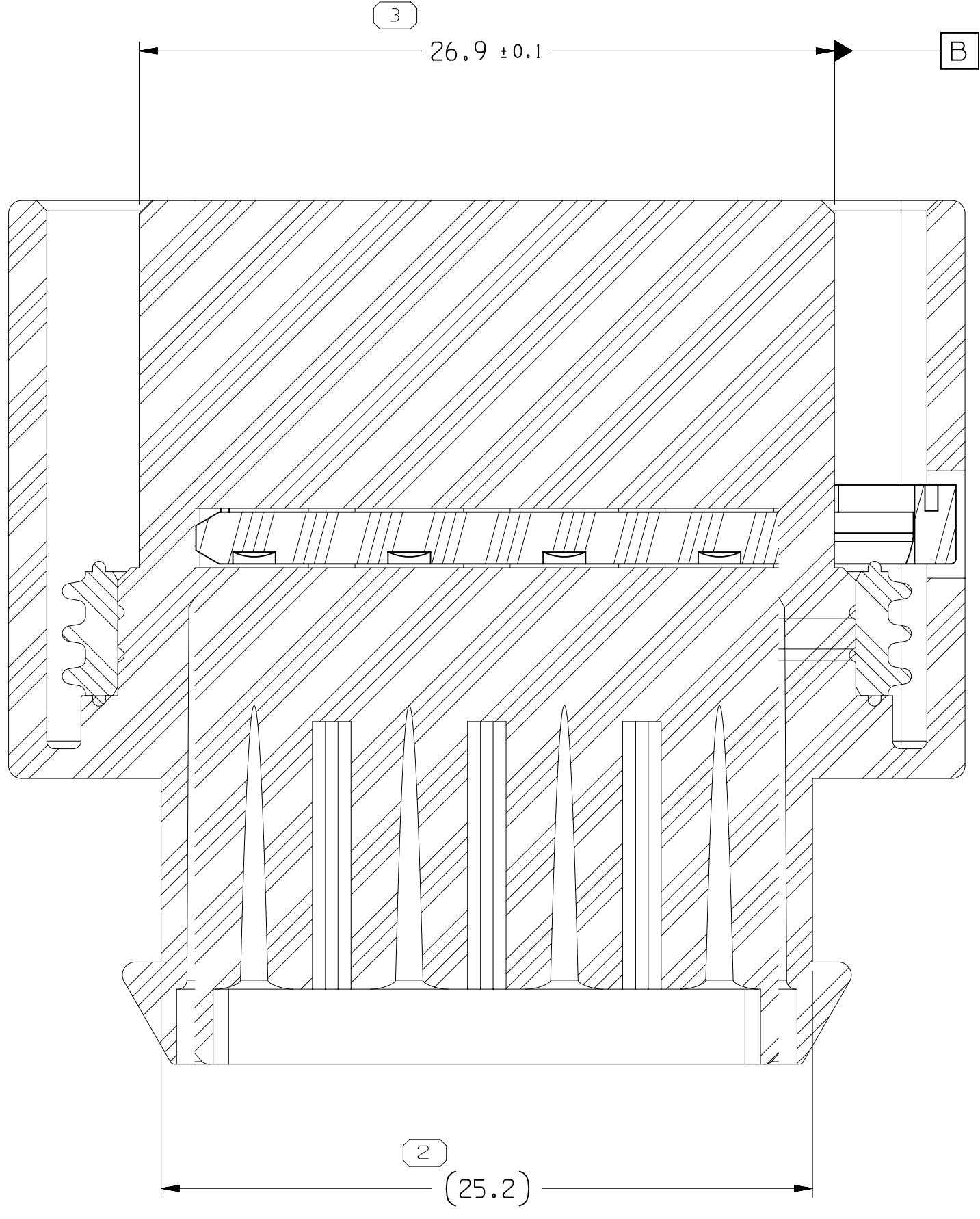


| SYMBOL DEFINITION   |                                  |    | MISSING SYMBOLS      |  |
|---|----------------------------------|----|----------------------|--|
| A DIMENSION WITHOUT AN INSPECTION REPORT SYMBOL<br>○ DOES NOT REQUIRE INSPECTION. IT MAY BE CONTROLLED ON THE INDIVIDUAL COMPONENT DRAWING. | TOTAL NO OF INSPECTIONS REQUIRED | 12 | NO MISSING OL NUMBER |  |
|   | LAST NO. USED                    | 7  |                      |  |

| DWG STATUS |     |     |     | 3   | 2  |  |  | 1      |
|------------|-----|-----|-----|-----|--|--|--|--------|
| DATE       | STG | REV | N/P | CHG | REVISION HISTORY   |  |  | AUTH   |
| 14JN19     | R   | 01  | -   | -   | 13601424 - WAS ON DRAWING 13601425, 3X 7 ± 0.05 WAS 7 & 26.9 ± 0.1 WAS 26.9 AND ADDED SEALING CODE NOTE: 35357261 - RELEASED |  |  | 443484 |
| 20FE20     | R   | 02  | -   | -   | 35357261 - UPDATED PART AVAILABILITY   |  |  | 551062 |



SECTION A - A



SECTION B - B

- NOTES
- UNLESS OTHERWISE SPECIFIED AND/OR INDICATED:  
DIMENSIONS ARE TO FACE OF VIEW SHOWN AND AUTOMATICALLY ROUNDED BY COMPUTER FOR INSPECTION (SEE MATH MODEL FOR PRECISE DIMENSIONS). FOR ALL OTHER DIMENSIONS NOT SHOWN BUT REQUIRED FOR TOOL BUILD, SEE MATH MODEL FOR PRECISE TOOL PATH DATA.
  - REFERENCE MATING COMPONENTS OR EQUIVALENT:  
ACTIVE TERMINAL SYSTEM 280 SEALED 15344661
  - THIS PRODUCT IS NOT CATEGORIZED AS AN APPEARANCE ITEM, MINOR IMPERFECTIONS INCLUDING, BUT NOT LIMITED TO, FLOW MARKS, COLOR BLEMISHES, GATE VESTIGE, AND SOFT FLASH THAT DO NOT AFFECT THE FIT, FORM, OR FUNCTION OF THE PART ARE PERMISSIBLE PER DPNP-4.7-CS-01.
  - PART MECHANICALLY AND ENVIRONMENTALLY CONFORMS TO SAE/USCAR-2 R4: CONNECTOR-CONNECTOR OR DEVICE MATING FORCE IS 100 N MAXIMUM, SECONDARY LOCK ENGAGE FORCE TO FINAL POSITION IS 8N <= X <= 60N, SECONDARY LOCK DISENGAGE FORCE FROM FINAL POSITION IS 8N <= X <= 60N, SECONDARY LOCK RETENTION FORCE FROM PRE-STAGE POSITION IS 8N MINIMUM
  - FOR APPLICATION DATA SEE THE INDIVIDUAL APPLICATION DRAWINGS.
  - PART(S) RESTRICTED FOR USE IN FCA 2019KB PLATFORM AND TESLA MODEL. REFER TO CHART FOR SPECIFIC RESTRICTED PART NUMBERS.
  - SEALING CODE 4 - DESIGN WILL MEET REQUIREMENTS OF SAE/USCAR-2 CONNECTOR SYSTEM ENVIRONMENTAL TEST FLOWCHART (PRESSURE/VACUUM AND SUBMERSION).

|          |     |     |           |                |           |                          |
|----------|-----|-----|-----------|----------------|-----------|--------------------------|
| 35357261 | 01  | AA  | 13601422  | 13601420       | 13601418  | -                        |
| 13601424 | 02  | AD  | 13601422  | 13601420       | 13601418  | RESTRICTED (SEE NOTE #6) |
| PART NO  | REV | N/P | CONN BODY | SECONDARY LOCK | CONN SEAL | RESTRICTED USAGE         |

| DIMENSIONAL RANGE (MM) |     | CHART |     |
|------------------------|-----|-------|-----|
| FROM                   | TO  | 1     | 2   |
| 0                      | 20  | 20    | 30  |
| 20                     | 30  | 30    | 40  |
| 30                     | 40  | 40    | 50  |
| 40                     | 50  | 50    | 60  |
| 50                     | 60  | 60    | 70  |
| 60                     | 70  | 70    | 80  |
| 70                     | 80  | 80    | 90  |
| 80                     | 90  | 90    | 100 |
| 90                     | 100 | 100   | 110 |
| 100                    | 110 | 110   | 120 |
| 110                    | 120 | 120   | 130 |
| 120                    | 130 | 130   | 140 |
| 130                    | 140 | 140   | 150 |
| 140                    | 150 | 150   | 160 |
| 150                    | 160 | 160   | 170 |
| 160                    | 170 | 170   | 180 |
| 170                    | 180 | 180   | 190 |
| 180                    | 190 | 190   | 200 |
| 190                    | 200 | 200   | 210 |
| 200                    | 210 | 210   | 220 |
| 210                    | 220 | 220   | 230 |
| 220                    | 230 | 230   | 240 |
| 230                    | 240 | 240   | 250 |
| 240                    | 250 | 250   | 260 |
| 250                    | 260 | 260   | 270 |
| 260                    | 270 | 270   | 280 |
| 270                    | 280 | 280   | 290 |
| 280                    | 290 | 290   | 300 |
| 290                    | 300 | 300   | 310 |
| 300                    | 310 | 310   | 320 |
| 310                    | 320 | 320   | 330 |
| 320                    | 330 | 330   | 340 |
| 330                    | 340 | 340   | 350 |
| 340                    | 350 | 350   | 360 |
| 350                    | 360 | 360   | 370 |
| 360                    | 370 | 370   | 380 |
| 370                    | 380 | 380   | 390 |
| 380                    | 390 | 390   | 400 |

APERTIV

CONNECTION SYSTEMS

WARREN, OH

COPYRIGHT 2019 APTIV, ALL RIGHTS RESERVED.

THIS DRAWING IS THE PROPERTY OF APTIV AND CONTAINS APTIV CONFIDENTIAL INFORMATION. THE REPRODUCTION, DISTRIBUTION AND UTILIZATION OF THIS DOCUMENT OR ITS RELATED CAD DATA, AS WELL AS COMMUNICATION OF ANY CONTENT TO OTHERS, WITHOUT EXPRESS AUTHORIZATION, IS PROHIBITED.

DR: LUIS VILLARREAL  
APVD: J.S. ALVARADO  
APVD: LUCIA MELCHOR  
APVD: LUCIA MELCHOR  
APVD: LUCIA MELCHOR

SUBSTANCES OF CONCERN AND RECYCLED CONTENT PER APTIV (1049200)

MATERIAL: SEE DRAWING

DRAWING NAME: TAXI ASM CONN 4 F ATS 2.B SLD

DRAWING NUMBER: 35360841

SIZE: A0  
SCALE: 5:1  
FRAME NO: 1 OF 1  
SHEET NO: 1 OF 1  
STG: R  
REV: 02

THIS DOCUMENT IS IN ACCORDANCE WITH ASME Y14.5M-1994 AS MODIFIED BY THE 2018 GLOBAL DIMENSIONS AND TOLERANCING ADDENDUM-2018. SEPARATE PATTERNING OF FEATURES MAY BE ISSUED SEPARATELY REGARDLESS OF DATUM REFERENCES.

ALL DIMENSIONS ARE IN MILLIMETERS

REFERENCE

THIRD ANGLE PROJECTION

DO NOT SCALE

USE MATH DATA

NX

# Mouser Electronics

Authorized Distributor

Click to View Pricing, Inventory, Delivery & Lifecycle Information:

[Aptiv:](#)

[13601424](#)