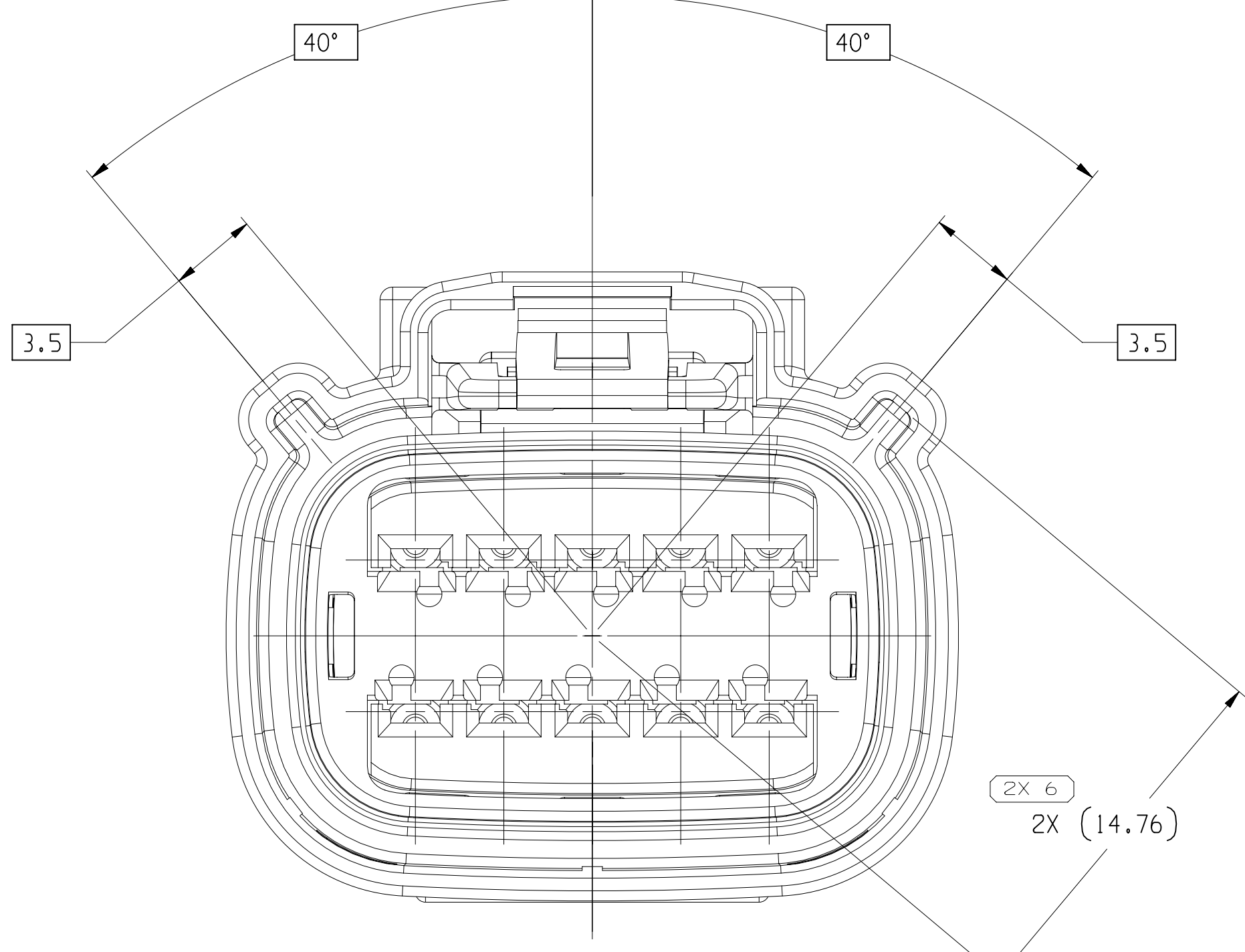
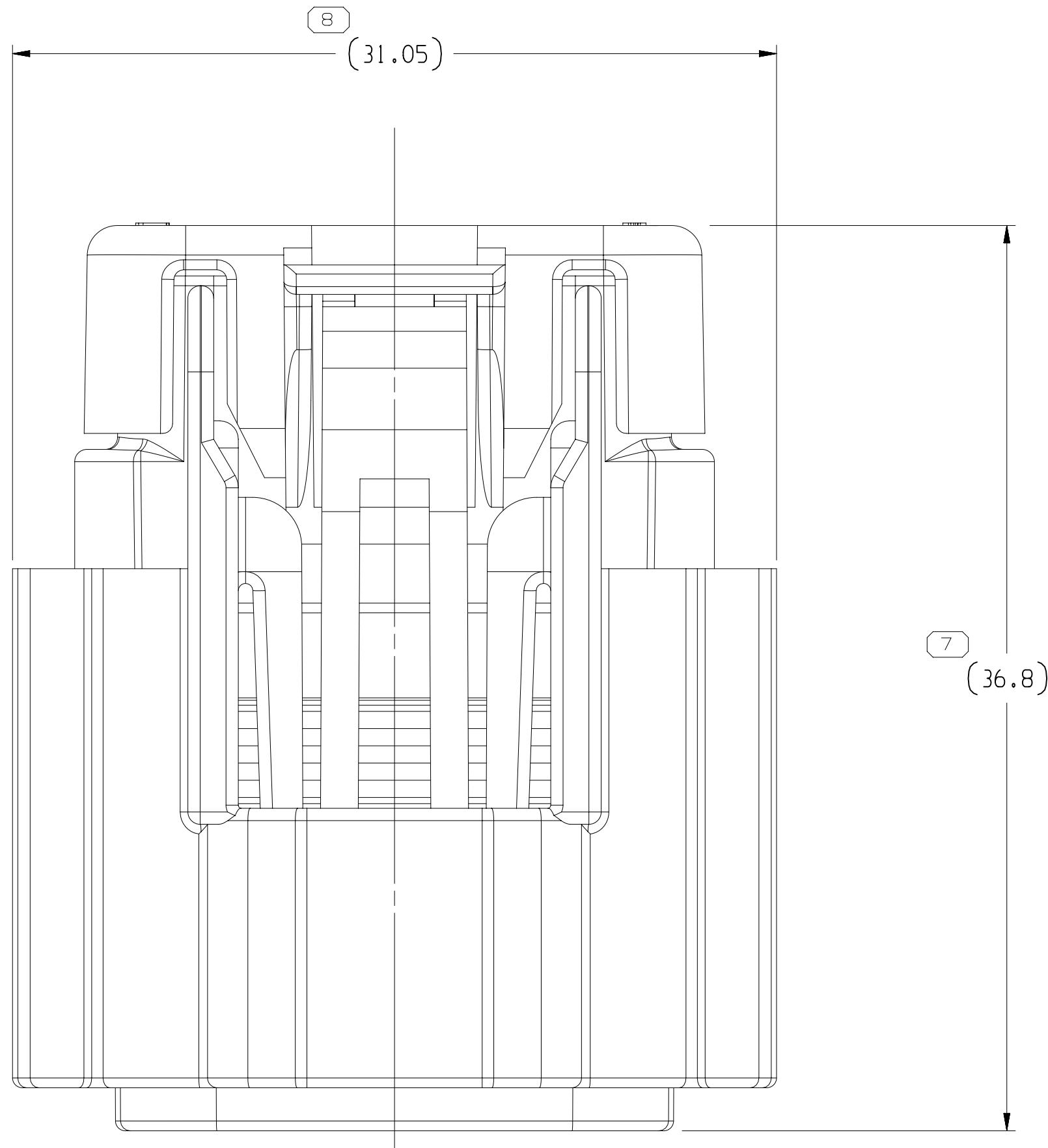


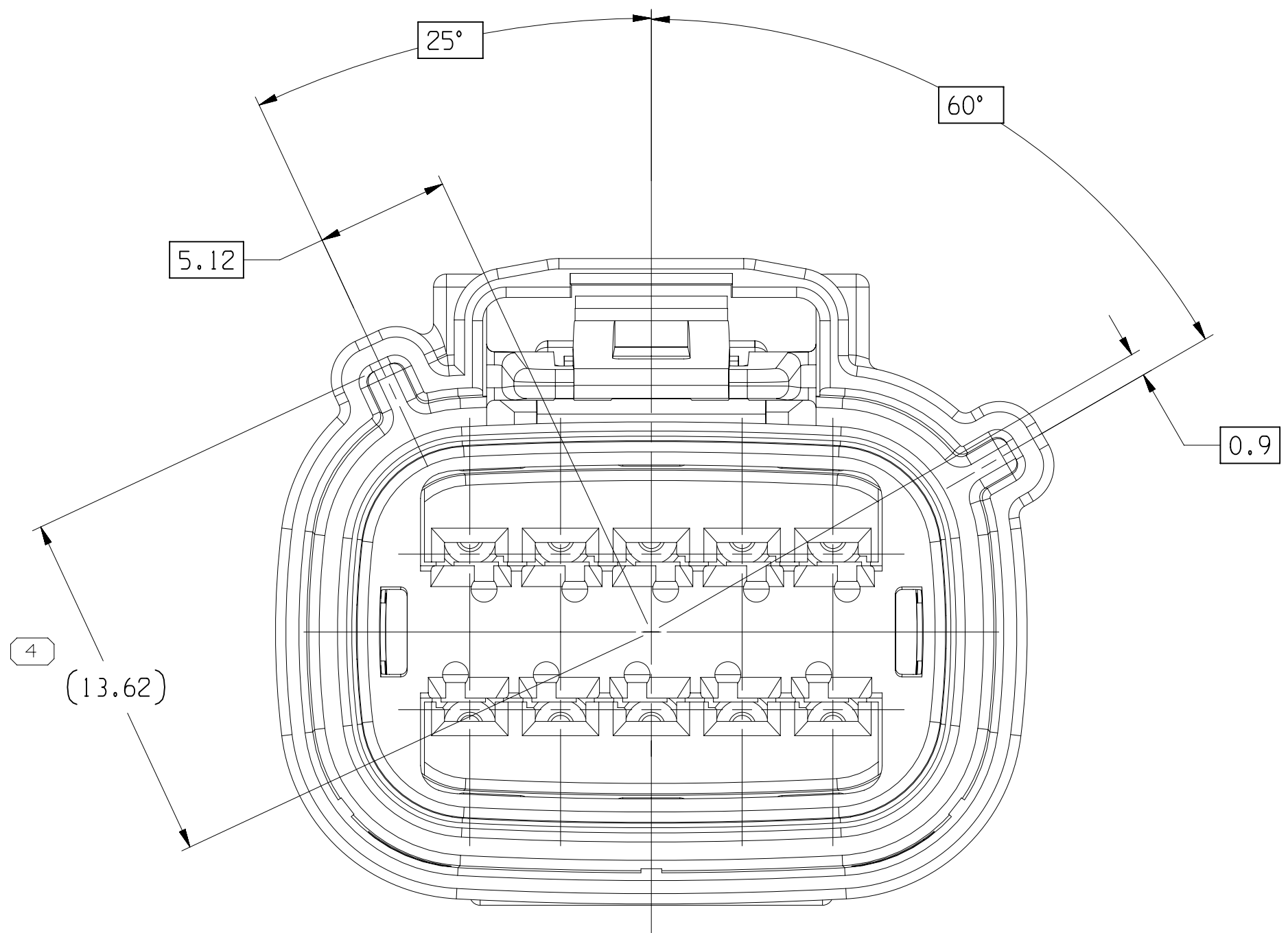
TYPE 102
SAME AS TYPE 101
EXCEPT AS SHOWN



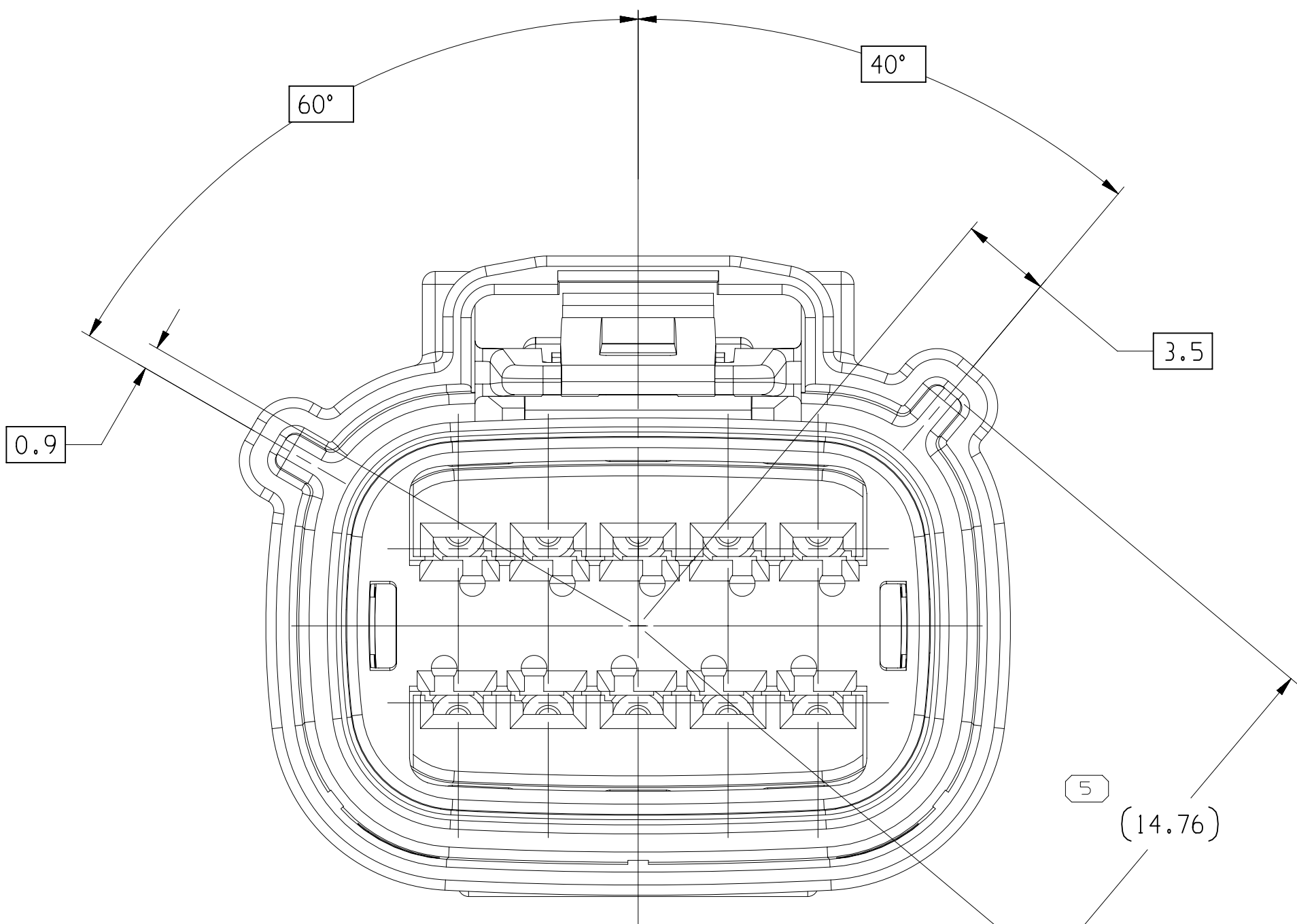
TYPE 105
SAME AS TYPE 101
EXCEPT AS SHOWN



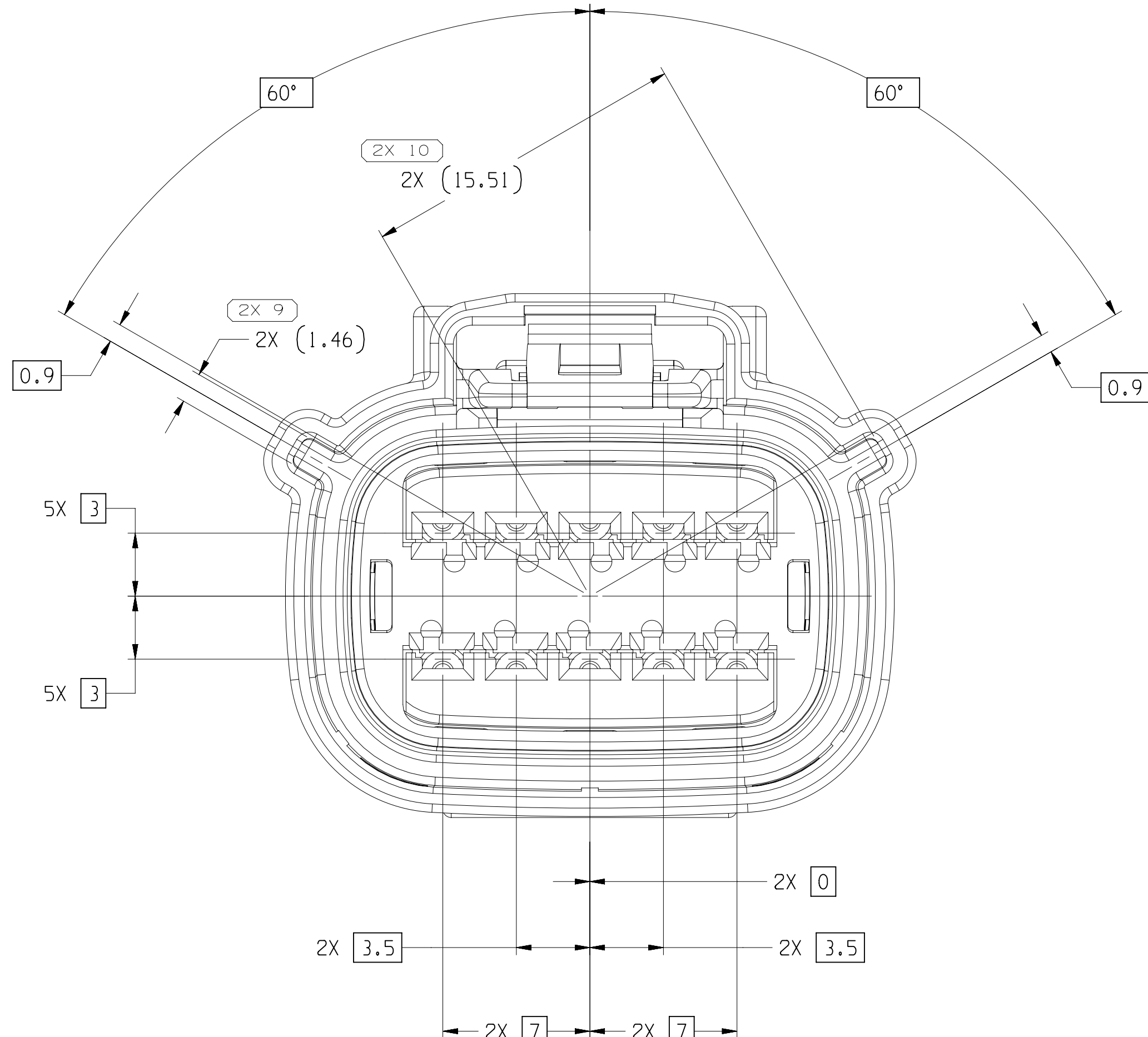
TYPE 101



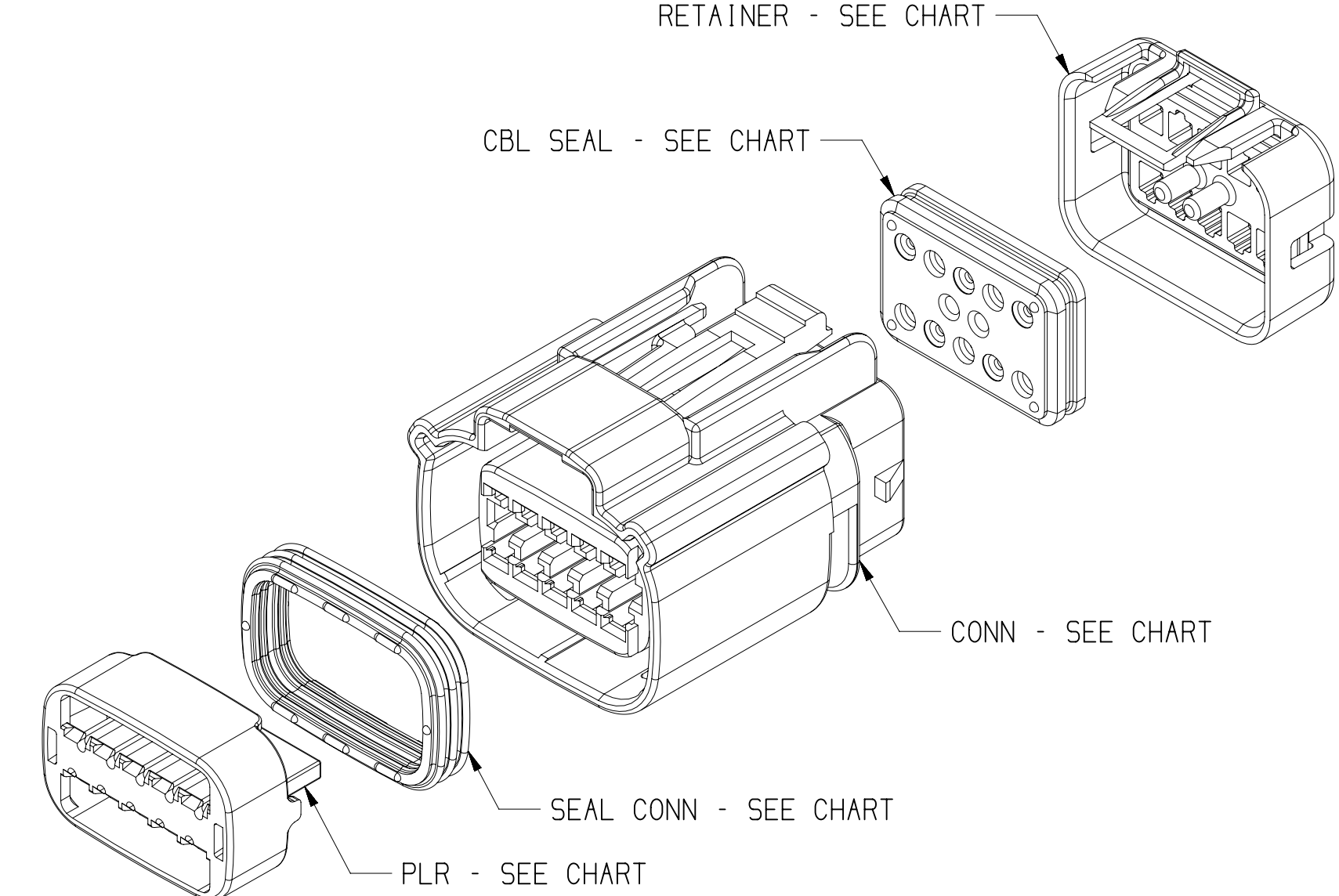
TYPE 103
SAME AS TYPE 101
EXCEPT AS SHOWN



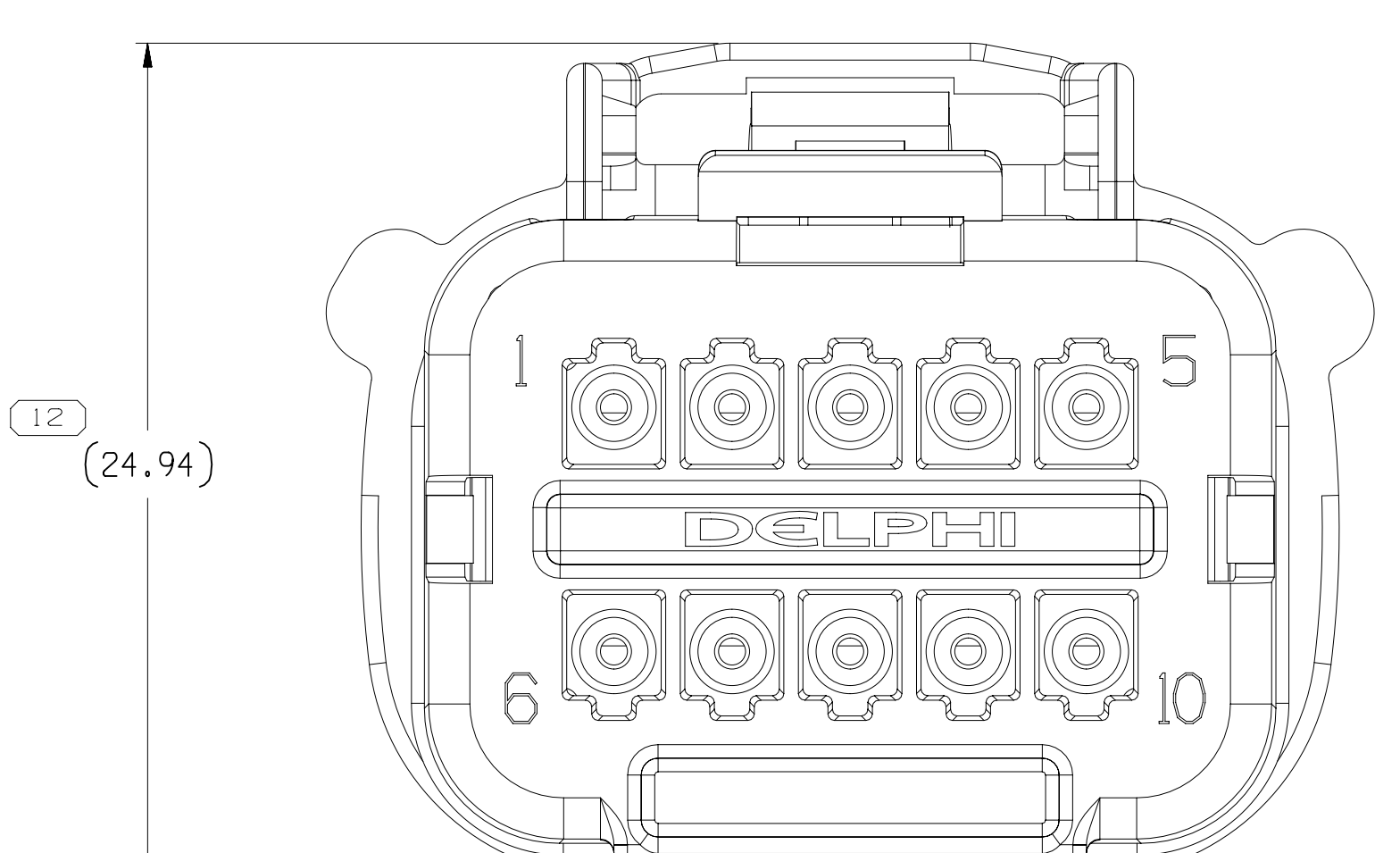
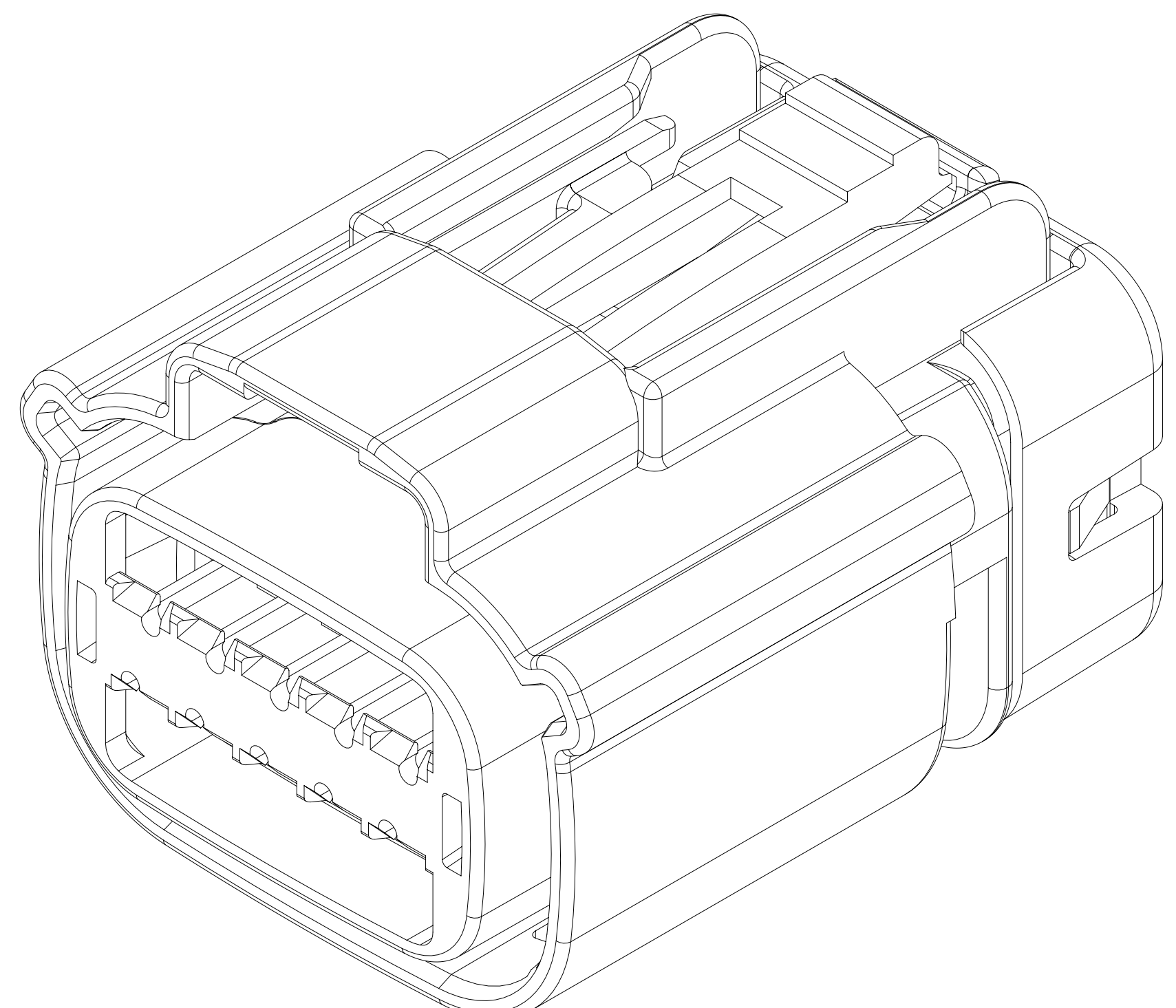
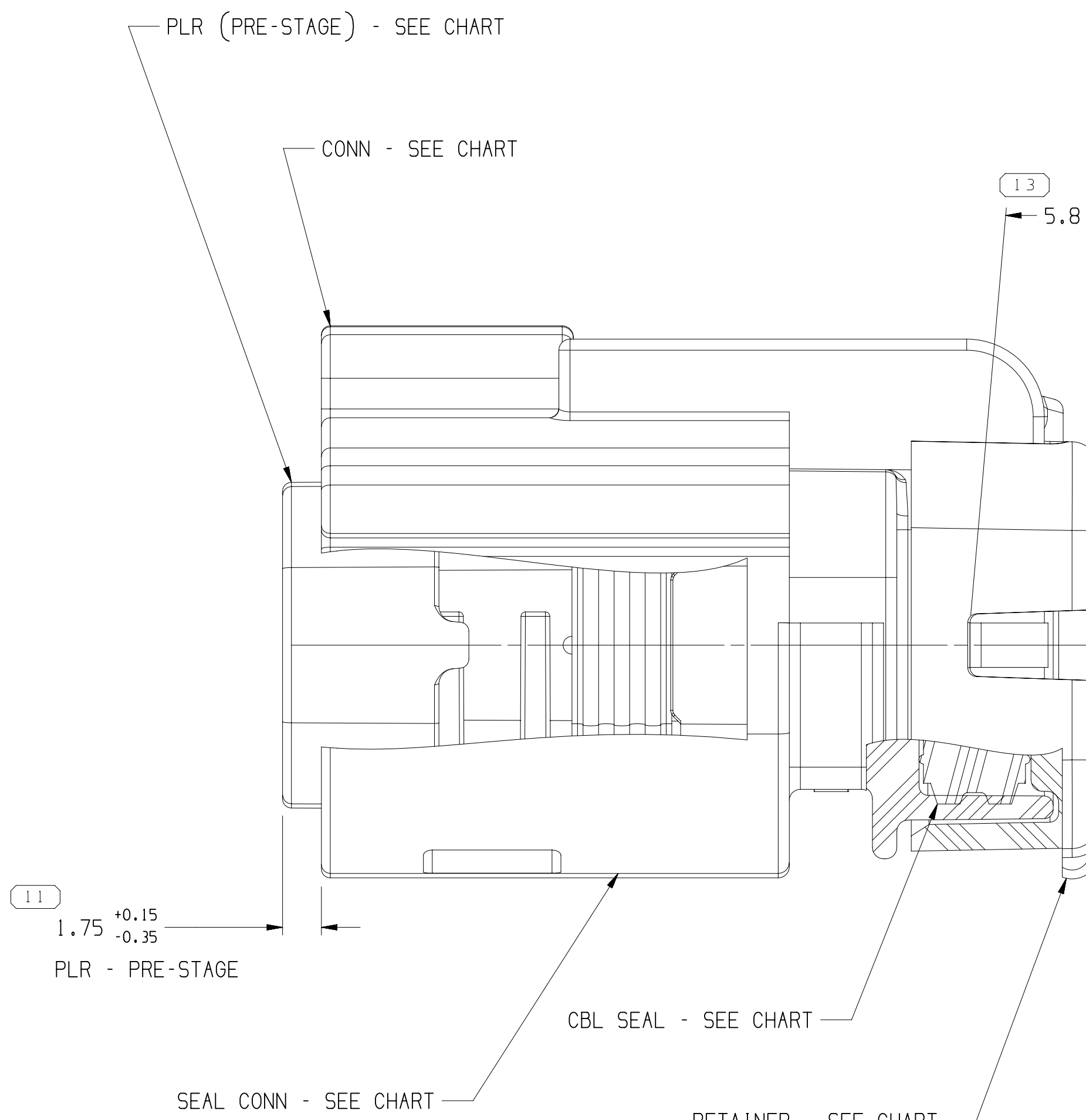
TYPE 106
SAME AS TYPE 101
EXCEPT AS SHOWN



TYPE 101

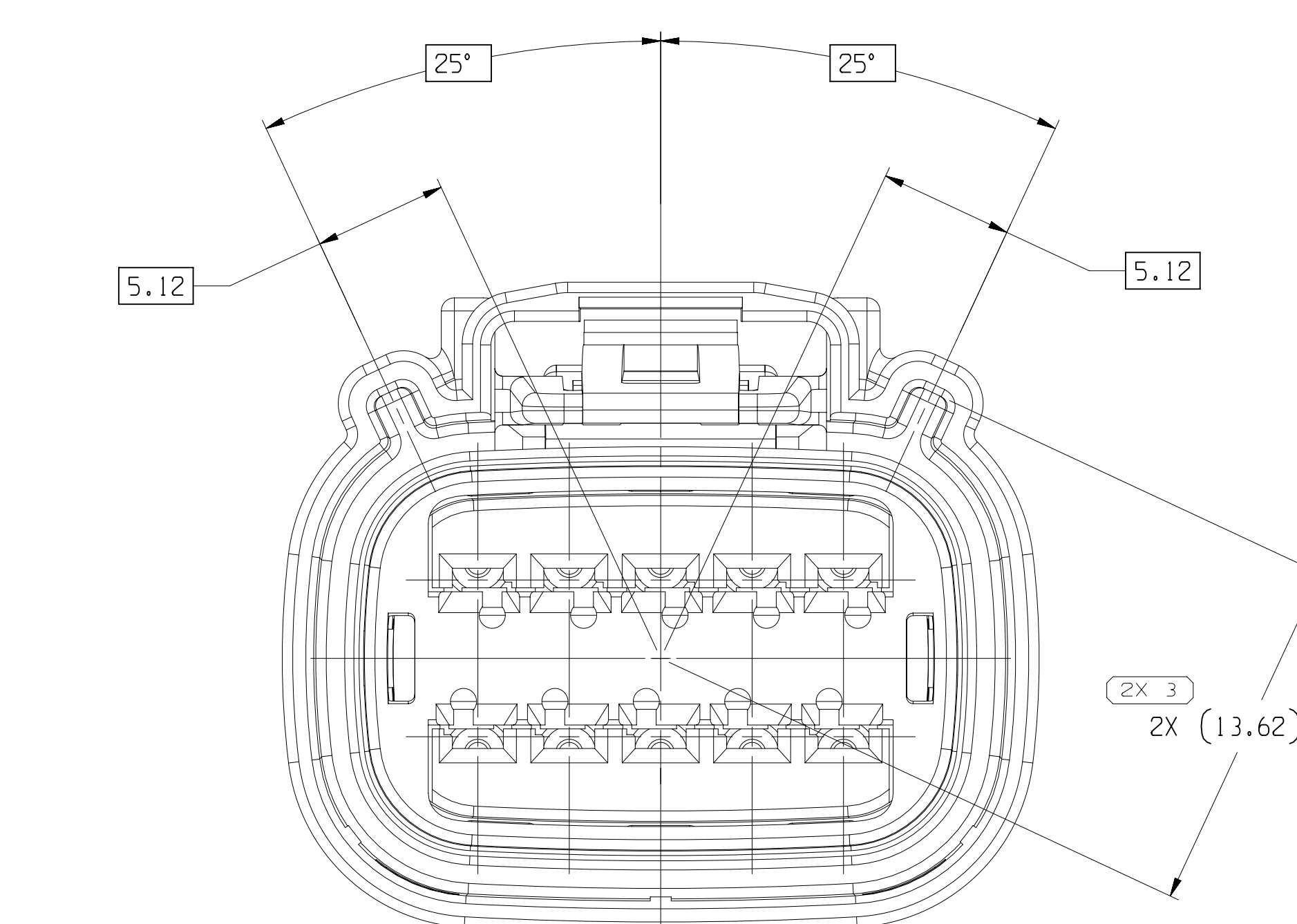


EXPLODED VIEW
SCALE 2:1



NOTES

- UNLESS OTHERWISE SPECIFIED AND/OR INDICATED:
DIMENSIONS ARE TO FACE OF VIEW SHOWN AND AUTOMATICALLY ROUNDED BY COMPUTER FOR INSPECTION (SEE MATH MODEL FOR PRECISE DIMENSIONS). FOR ALL OTHER DIMENSIONS NOT SHOWN BUT REQUIRED FOR TOOL BUILD, SEE MATH MODEL FOR PRECISE TOOL PATH DATA.
- PART IS MANUFACTURED TO GEOMETRIC TOLERANCES. CENTERLINE DIMENSIONS ARE FOR REFERENCE ONLY.
- SEALING CODE 4 - DESIGN WILL MEET REQUIREMENTS OF SAE/USCAR-2 CONNECTOR SYSTEM ENVIRONMENTAL TEST FLOWCHART (PRESSURE/VACUUM AND SUBMERSION).
- THIS PRODUCT IS NOT CATEGORIZED AS AN APPEARANCE ITEM. MINOR IMPERFECTIONS INCLUDING, BUT NOT LIMITED TO, FLOW MARKS, COLOR BLENDISHES, GATE VESTIGES, AND SOFT FLASH THAT DO NOT AFFECT THE FIT, FORM, OR FUNCTION OF THE PART ARE PERMISSIBLE PER EAMP-4-3-05-01-EN.
- FOR APPLICATION DATA SEE THE INDIVIDUAL APPLICATION DRAWINGS.
- ASSEMBLY TO BE USED WITH APPROPRIATE ACTIV HOLDER DESIGN.
- ASSEMBLY TO BE PROCESSED USING ACTIV CONNECTION SYSTEMS BEST PRACTICE METHODS AND/OR CONNECTOR ASSEMBLY INSTRUCTIONS AND APPLICABLE REPAIR PROCEDURES.
- BEFORE TERMINAL ASSEMBLY, VERIFY THAT PLR IS IN THE PRE-STAGE POSITION ON THE CONNECTOR. IF NOT, RETURN PLR TO PRE-STAGE POSITION.
- FOR DIFFERENT PUNCH PATTERN CONFIGURATIONS (IF AVAILABLE) SEE SHEET 2
- FOR ASSEMBLIES WITH CPA SEE DRAWING 15514827



TYPE 104
SAME AS TYPE 101
EXCEPT AS SHOWN

PART NO	REV	N/P	TYPE	CONNECTOR	PLR	SEAL CONN	SEAL CBL	RETAINER	USCAR OPTION	HOLE PUNCH PATTERN FOR OPEN CAVITIES	NO OF CAVITIES PLUGGED
15532129	03	AC	106	15514819	15514895	15514898	15514893	15514888	F	- - - - -	NONE
15532128	03	AC	105	15514818	15514895	15514898	15514893	15514888	E	- - - - -	NONE
15532127	03	AC	104	15514817	15514895	15514898	15514893	15514888	D	- - - - -	NONE
15532126	03	AC	103	15514816	15514895	15514898	15514893	15514888	C	- - - - -	NONE
15532125	03	AC	102	15514815	15514895	15514898	15514893	15514888	B	- - - - -	NONE
15532124	03	AC	101	15514814	15514895	15514898	15514893	15514888	A	- - - - -	NONE

DRAWING NUMBER 15532123			
SIZE A1x3	SCALE 5:1	FRAME NO 2 OF 2	SHEET NO 1 OF 2

FUNCTIONAL PART NUMBER		DO NOT SCALE	
FROM	TO	FROM	TO
>0	>25	>10	>100
>25	>100	>100	>250
>100	>250	>250	>500
TOLERANCE UNLESS OTHERWISE SPECIFIED		TOLERANCE UNLESS OTHERWISE SPECIFIED	
FRACTIONAL DECIMAL (MM)		FRACTIONAL DECIMAL (MM)	
ANGULAR TOLERANCE		ANGULAR TOLERANCE	

THIRD ANGLE PROJECTION		DO NOT SCALE	
USE MATH DATA		USE MATH DATA	

• ACTIV •	
CONNECTION SYSTEMS	
WARREN, IN	
COPYRIGHT 2013 ACTIV. ALL RIGHTS RESERVED.	
THIS DRAWING IS THE PROPERTY OF ACTIV AND CONTAINS ACTIV CONFIDENTIAL INFORMATION. THE REPRODUCTION, DISTRIBUTION AND UTILIZATION OF THIS DOCUMENT OR ITS RELATED CAD DATA, AS WELL AS COMMUNICATION OF ANY CONTENT TO OTHERS, WITHOUT EXPRESS AUTHORIZATION, IS PROHIBITED.	
DR	DATE
APPROV1 JOSE A. RODRIGUEZ	08MY13
APPROV2 JOSE A. RODRIGUEZ	08MY13
APPROV3 ALICIA GUERRERO	09MY13
APPROV4	
SUBSTANCES OF CONCERN AND RECYCLED CONTENT (PULP ACTIV13 10049000)	
PROPERTY SEE CHART	
DRAWING NAME	
TAXI ASM CONN 10 F OCS 1.5 SLD	
DRAWING NUMBER	
15532123	
SIZE	SCALE
A1x3	5:1
FRAME NO	SHEET NO
1 OF 2	1 OF 2
REV	NOT
08	

12235123

Mouser Electronics

Authorized Distributor

Click to View Pricing, Inventory, Delivery & Lifecycle Information:

[Aptiv:](#)
[15532124](#)