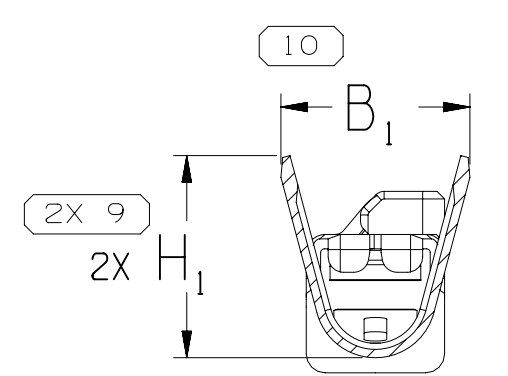
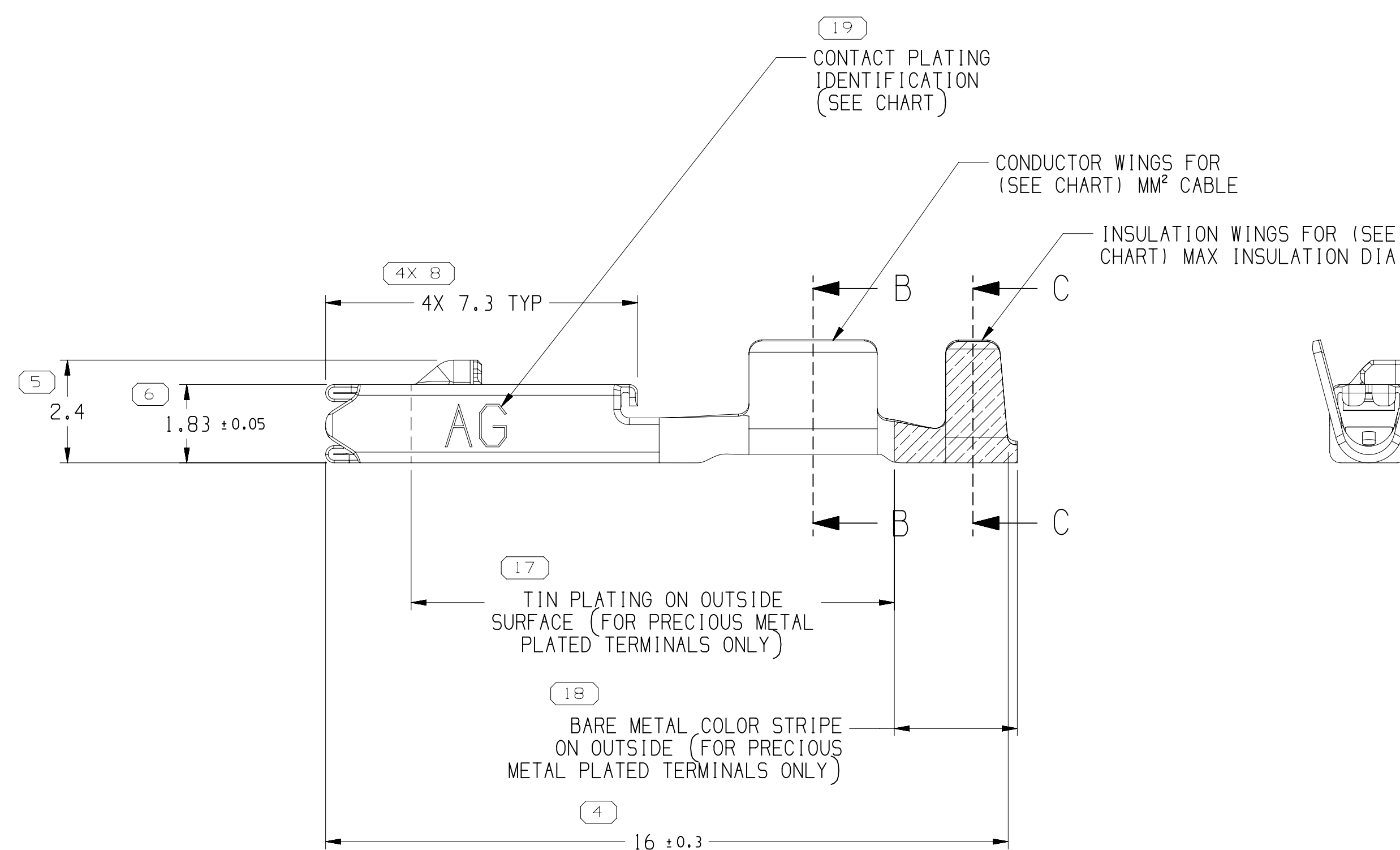
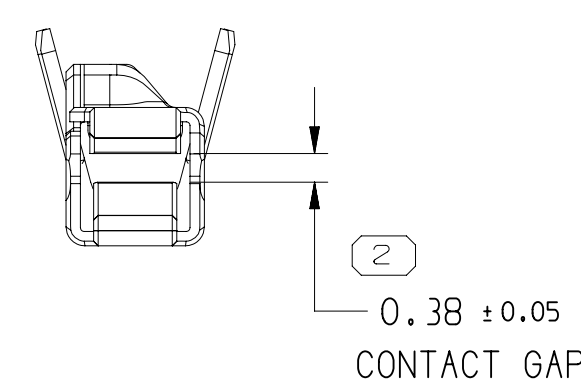
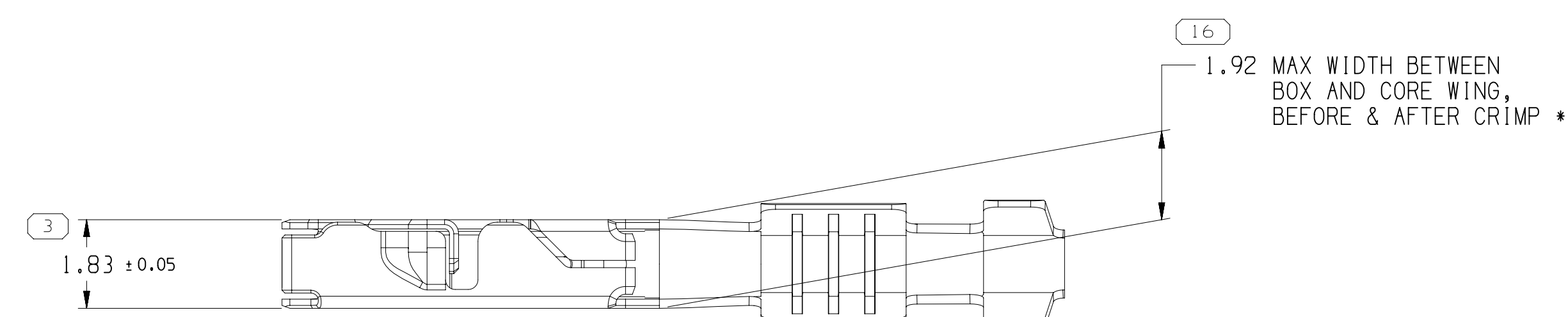
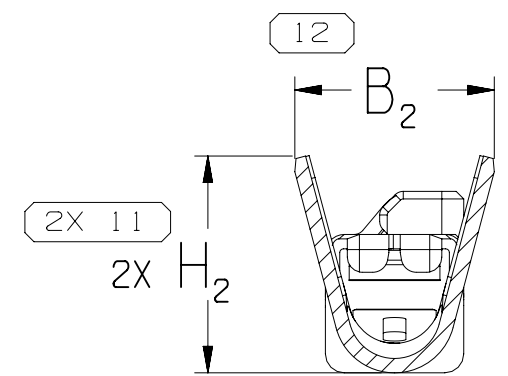


SCALE 10:1



SECTION B-B



SECTION C-C

## NOTES

1. UNLESS OTHERWISE SPECIFIED AND/OR INDICATED:

DIMENSIONS ARE TO FACE OF VIEW SHOWN AND AUTOMATICALLY ROUNDED BY COMPUTER FOR INSPECTION (SEE MATH MODEL FOR PRECISE DIMENSIONS). FOR ALL OTHER DIMENSIONS NOT SHOWN BUT REQUIRED FOR TOOL BUILD, SEE MATH MODEL FOR PRECISE TOOL PATH DATA.

2. RECOMMENDED MATING BLADE THICKNESS  $0.6 \pm 0.03$  MM OR  $0.64 \pm 0.03$  MM  
RECOMMENDED MATING BLADE WIDTH NOT TO EXCEED 1.2 MM  
AND NO LESS THAN 0.61 MM.

3. MAXIMUM CURRENT CAPACITY IS 10 AMPS WITH 0.8 MM<sup>2</sup> COPPER CABLE.


4. CRIMP DIMENSION FROM THE BACK OF THE CORE WING (INCLUDES THE FLARE OUT FROM THE CORE WING) TO THE END OF THE INSULATION WING.

- 2.05 MM MAX WIDTH, 2.1 MM MAX HEIGHT FOR CABLE SIZE UP TO 1.9 MM O.D.  
2.35 MM MAX WIDTH, 2.40 MM MAX HEIGHT FOR CABLE SIZE BETWEEN 1.86 TO 2.25 MM O.D.  
2.67 MM MAX WIDTH, 2.67 MM MAX HEIGHT FOR CABLE SIZE BETWEEN 2.25 TO 2.40 MM O.D.

5. \* DENOTES DIMENSIONS MADE AT CUT-OFF & CRIMP DIE.

6. PLUS ANGLE IS WING BOTTOM SURFACE ROTATED COUNTERCLOCKWISE AGAINST THE BOX BOTTOM SURFACE.



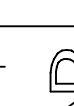
13627887	02	AL	0.19 X 26.78	SILVER PLATED COPPER ALLOY	SILVER	AG	0.8-1.0	17	1.86 ± 2.4	2.5	2.8	2.7	2.8	1.6
13627886	02	AL	0.19 X 26.78	SILVER PLATED COPPER ALLOY	SILVER	AG	0.75-0.8	18	1.7 ± 1.9	2.5	2.5	2.7	2.5	1.5
13627884	02	AL	0.19 X 26.78	SILVER PLATED COPPER ALLOY	SILVER	AG	0.35-0.50	21	1.47 ± 1.9	2	2.4	2.1	2.4	1.4
PART NO	REV	N/P	MAT'L SIZE	MAT'L SPEC	CONTACT PLATING	CONTACT PLATING J.D	SIZE (MM²)	ID	DIA	B <sub>1±0.2</sub>	B <sub>2±0.3</sub>	(H <sub>1</sub> )	(H <sub>2</sub> )	T MAX

SYMBOL DEFINITION		
A DIMENSION WITHOUT AN INSPECTION REPORT SYMBOL  DOES NOT REQUIRE INSPECTION. IT MAY BE CONTROLLED ON THE INDIVIDUAL COMPONENT DRAWING.	TOTAL NO OF INSPECTIONS REQUIRED	22
	LAST NO. USED	19

MISSING SYMBOLS
17

DWG STATUS				ZONE	REVISION HISTORY	AUTH	DR	APV'D 1	APV'D 2
DATE	STG	REV	CHG						
15F007	R	01	-	-	ALL PARTS - RELEASED	400502	MAC	MAC	SCH
12JN07	R	02	-	-	ALL PARTS - MAT'L SPEC WAS M5791C21 AND CONTACT PLATING WAS TIN/SILVER	401643	JS	JS	SCH
24AU07	R	03	-	-	ALL PARTS: REVISED EXTERIOR LEAD-IN	402155	MM	MM	SCH
21SE07	R	04	-	-	ALL PARTS: UPDATED PDM ATTRIBUTES; CORRECTED MATERIAL SPECIFICATION	402423	MM	MM	SCH
17MR08	R	05	-	-	ALL PARTS: REDUCED MATERIAL STOCK WIDTH	404136	MM	MM	SCH
15MY08	R	06	-	-	ALL PARTS: REVISED PROCESS SENSITIVE DIMENSION	404644	MM	MM	SCH
11SE08	R	07	-	-	ALL PARTS: ADDED PLATING INFORMATION AND CONTACT PLATING I.D. COLUMN IN CHART	405961	MM	MM	SCH
13NO08	R	08	-	-	ALL PARTS: REVISED PLATING INFORMATION	406771	MM	MM	SCH
05DE08	R	09	-	-	ALL PARTS: REVISED GRAPHICS	406948	MM	MM	SCH
26JA12	R	10	-	-	ALL PARTS - DRAWING NAME WAS TERM F MICRO HVT 1,2	416835	JEG	JEG	JRV
05FE13	R	11	-	-	ALL PARTS - ADDED OPTIONAL SLOT LABEL	421310	AHG	JVM	MEC
02JUL13	R	12	-	-	ALL PARTS: UPDATED PDM ATTRIBUTES; NO REV UPDATE REQ'D	423154	CM	CM	MEC
24AP14	R	13	-	-	ALL PARTS - REVISED CRIMP DIMENSIONING NOTE	426369	APB	JAA	MEC
12NO18	R	14	-	-	ALL PARTS - UPDATED PDM ATTRIBUTES	441457	LXA	JAA	LB

3		PROCESS SENSITIVE DIMENSION	
DIMENSIONS ENCLOSED IN ( ) INDICATE REFERENCE DIMENSIONS AND NO TOLERANCE LIMITS ARE ESTABLISHED			
DIMENSIONAL RANGE (MM)		CHART D	
FROM	0		
TO	12	>12	
TOLERANCE UNLESS OTHERWISE SPECIFIED			
±0.1		±0.2	
ANGULAR TOLERANCE		±2'	

<p>A PART NUMBER THROUGH A PART NUMBER INDICATES LINE PHYSICAL PARTS ARE NOT AVAILABLE FOR ORDERING.</p> <p>PART NUMBER THAT DOES NOT HAVE A LINE PRESENT INDICATE THAT PHYSICAL PARTS ARE AVAILABLE FOR ORDERING.</p> <p>CONTACT ACTIVS SALES TO ASSURE AVAILABILITY PARTS.</p> <p>UNIT TYPE</p> <p style="text-align: center;"><b>PART DRAWING</b></p>	
<p>STYLE</p> <p>VOLUME (CM)</p>	<p>DISTR CODE</p>  <p>UNLESS OTHERWISE SPECIFIED</p> <p>THIS DOCUMENT IS IN ACCORDANCE WITH ASME Y14.5-1994 REFERENCED BY THE ISO 6002 DIMENSIONING AND TOLERANCING ADDENDUM (2001). SEPARATE PATTERNS OF DIMENSIONS MAY BE OBTAINED WITHOUT REGARDLESS OF DATUM REFERENCES.</p> <p>ALL DIMENSIONS ARE IN MILLIMETERS</p>
<p>THIRD ANGLE PROJECTION</p> 	<p>DO NOT SCALE</p> <p>USE DATA DATA</p>  <p><b>NX</b></p>

<h1 style="margin: 0;">• APTIV •</h1> <p style="margin: 0;">CONNECTION SYSTEMS</p> <p style="margin: 0;">WARREN, OH</p> <p style="margin: 0;">COPYRIGHT 2007 APTIV. ALL RIGHTS RESERVED.</p>									
<p style="margin: 0;">THIS DRAWING IS THE PROPERTY OF APTIV AND APTIV          CONFIDENTIAL INFORMATION. THE REPRODUCTION, DISTRIBUTION AND          UTILIZATION OF THIS DOCUMENT OR ITS RELATED CAD DATA, AS WELL          AS COMMUNICATION OF ANY CONTENT THEREIN, WITHOUT EXPRESS          AUTHORIZATION, IS PROHIBITED.</p>									
								DATE	
DR									
APV01 M. CHRESTAY								15FE07	
APV02 M. CHRESTAY								15FE07	
APV03 S.HSIEH								16FE07	
APV04									
APV05									
<p style="margin: 0;">SUBSTANCES OF CONCERN AND RECYCLED          CONTENT PER APTIV (094900)</p>									
<p style="margin: 0;">MATERIAL          SEE CHART</p>									
<p style="margin: 0;">DRAWING NAME:</p> <p style="margin: 0; text-align: center; font-size: 1.2em;">TAXI TERM F_OCS 1.2</p>									
<p style="margin: 0;">DRAWING NUMBER</p> <p style="margin: 0; text-align: center; font-size: 2em;">13543112</p>									
SIZE		SCALE		FRAME NO		SHEET NO		REV	
A10		10:1		1		3 OF		R 14	

# Mouser Electronics

Authorized Distributor

Click to View Pricing, Inventory, Delivery & Lifecycle Information:

[Aptiv:](#)

[13627887](#)