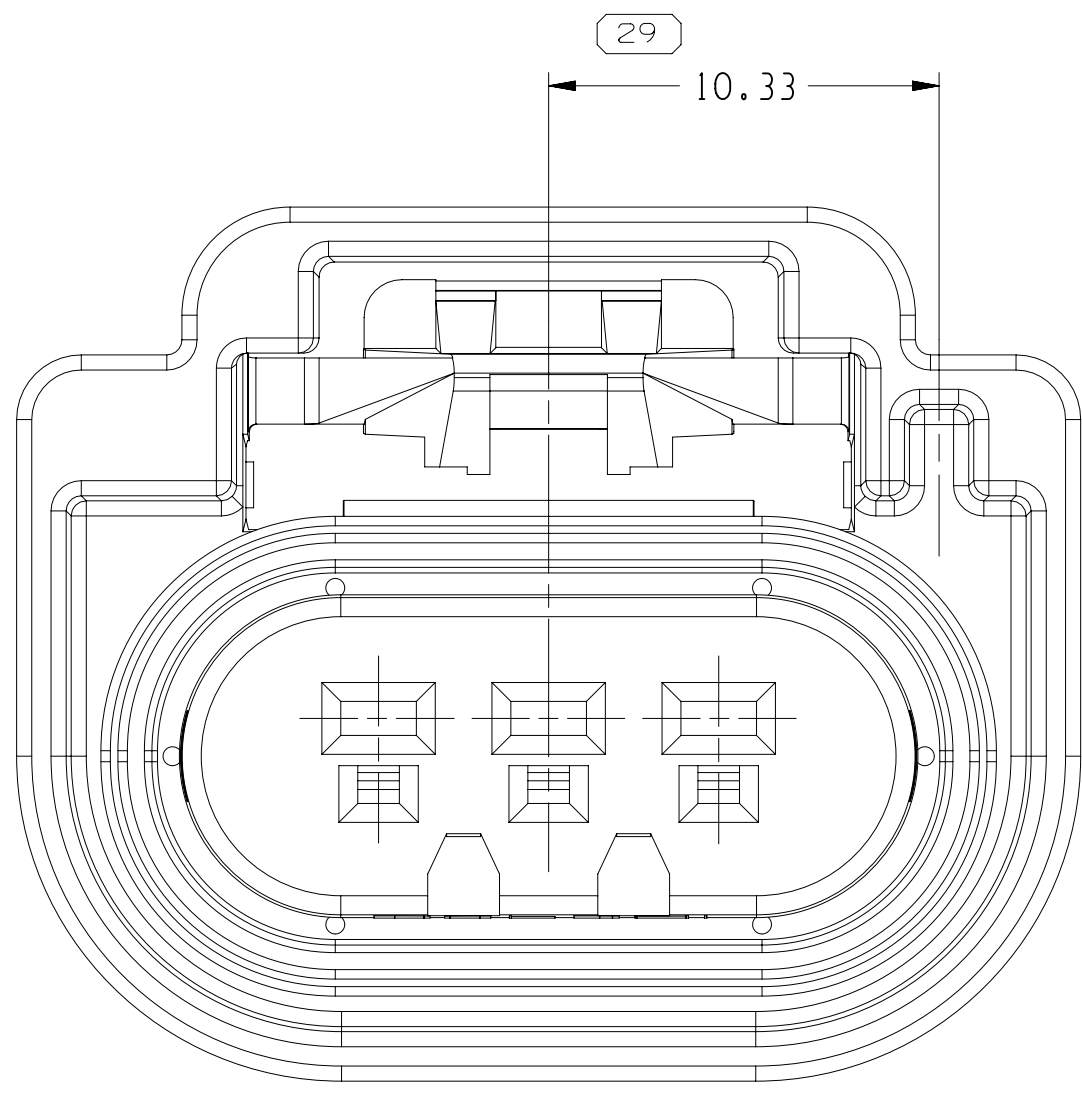
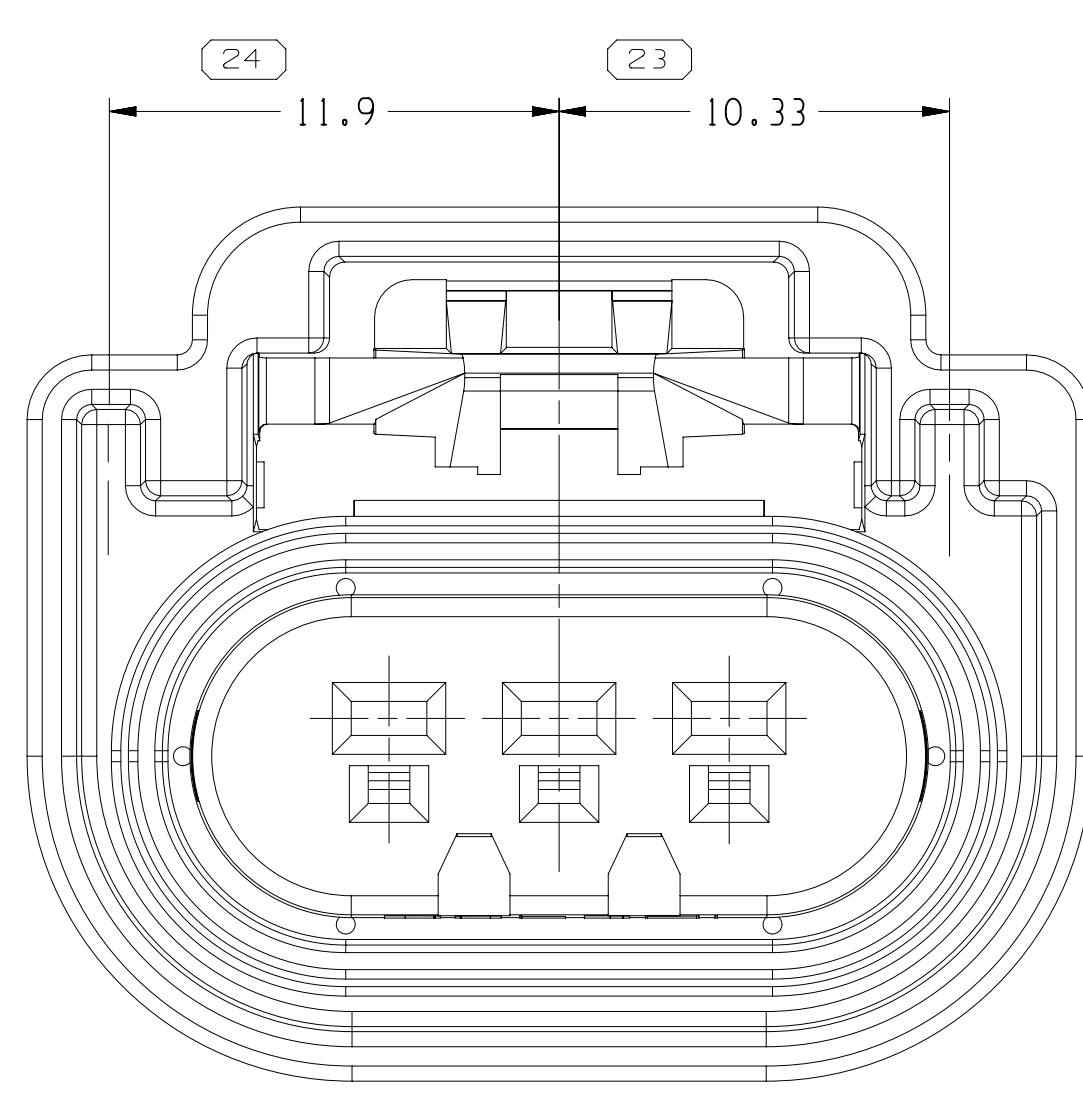


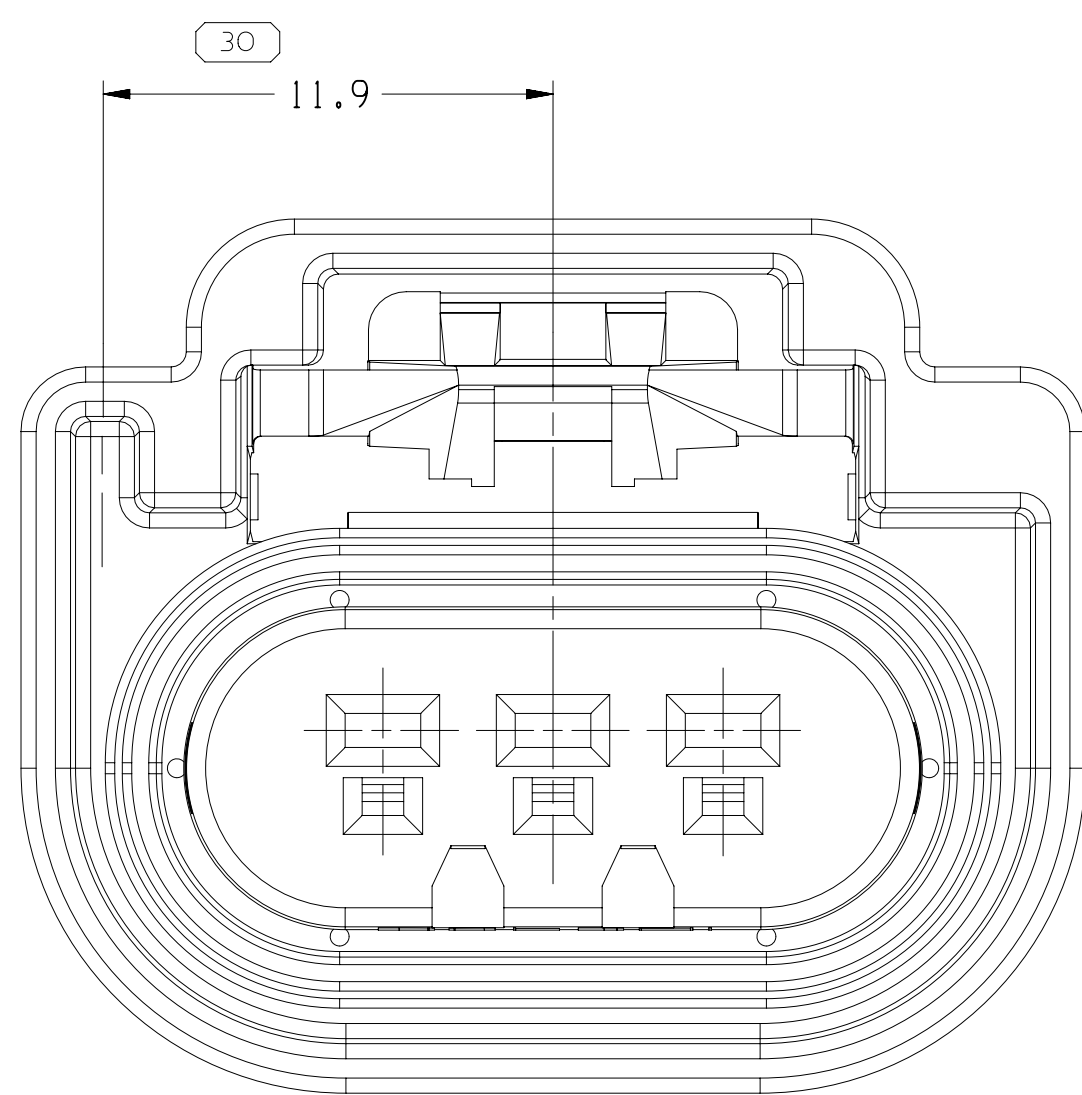
TYPE 110
SAME AS TYPE 101
EXCEPT AS SHOWN



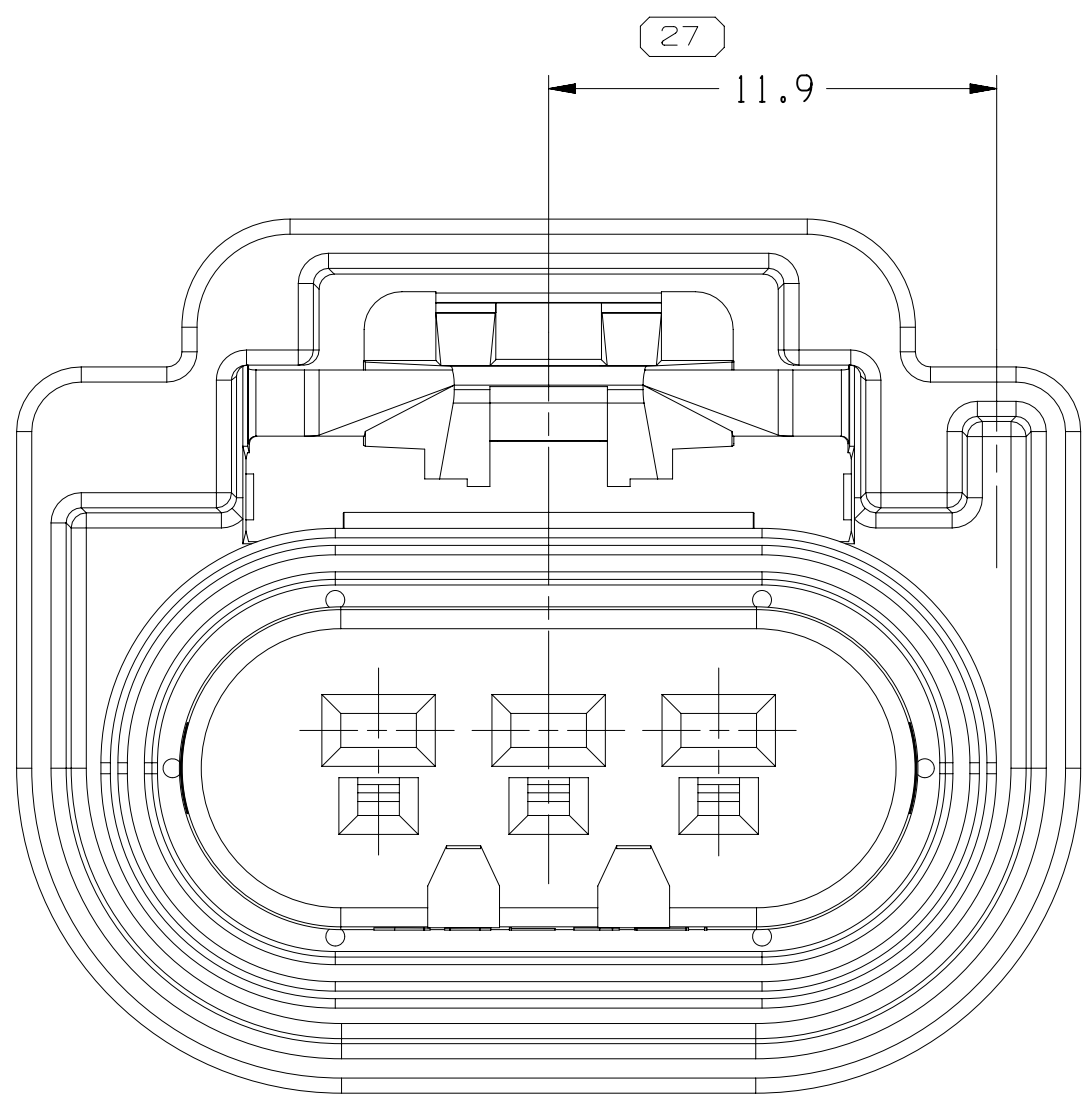
TYPE 107
SAME AS TYPE 102
EXCEPT AS SHOWN



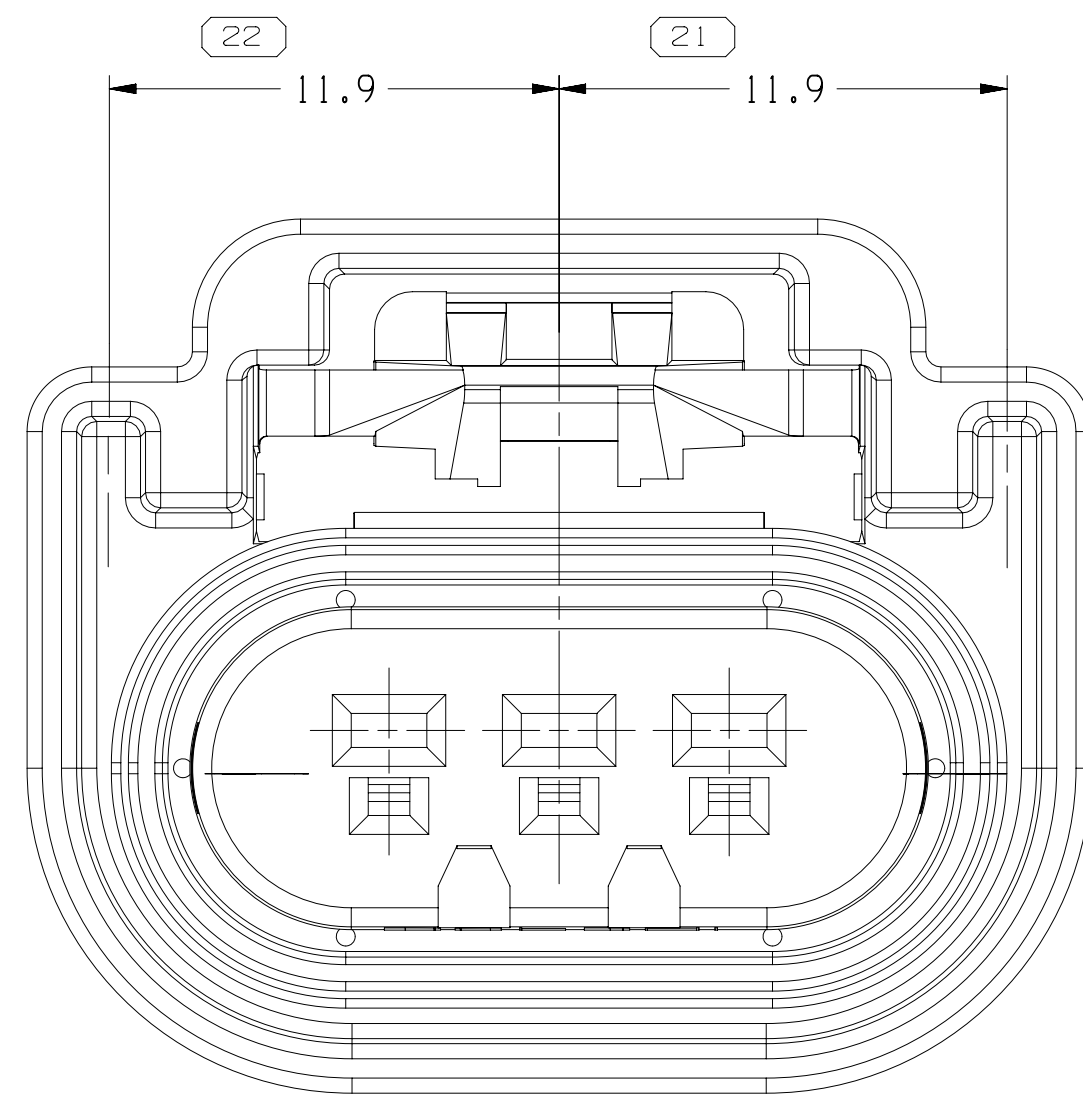
TYPE 104
SAME AS TYPE 102
EXCEPT AS SHOWN



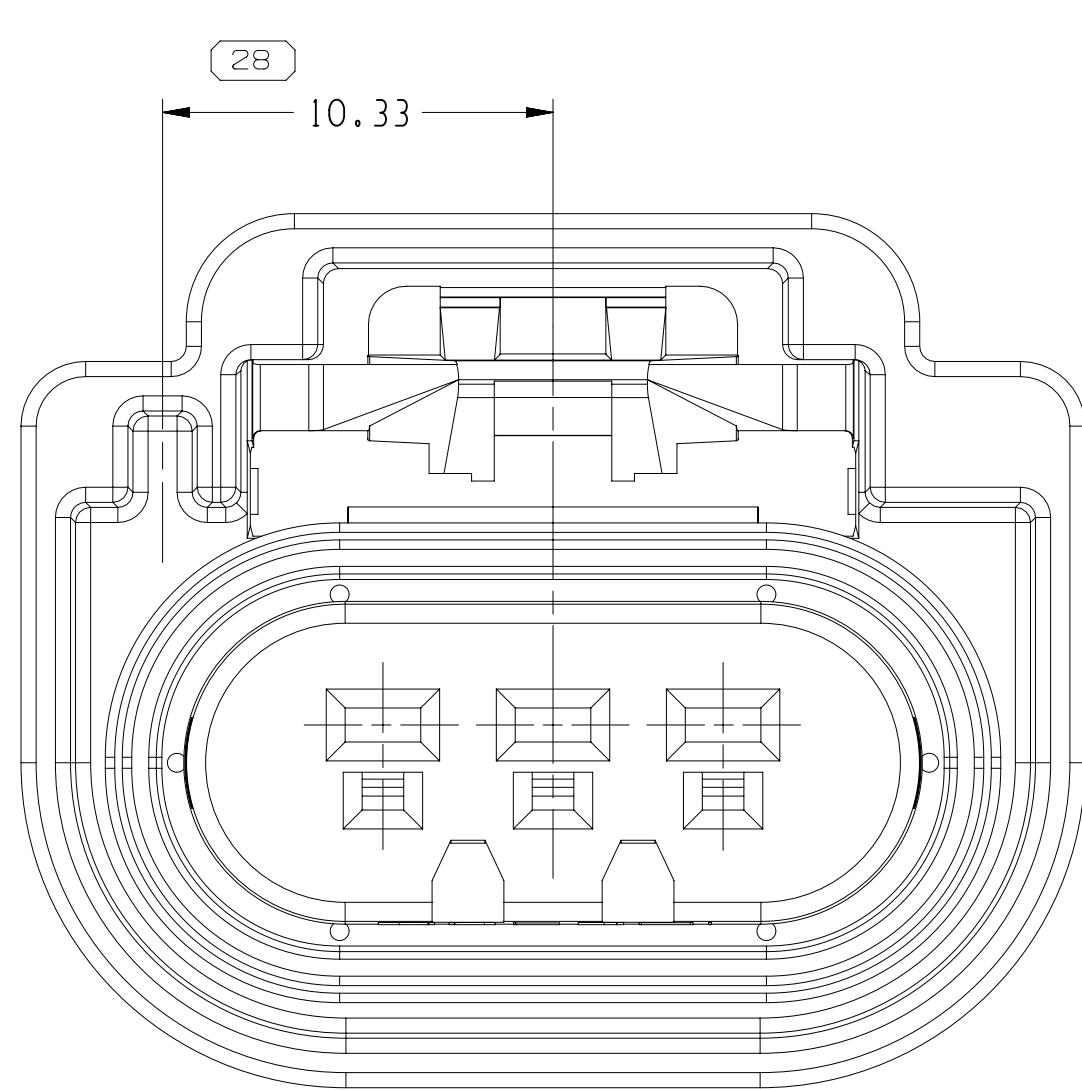
TYPE 109
SAME AS TYPE 102
EXCEPT AS SHOWN



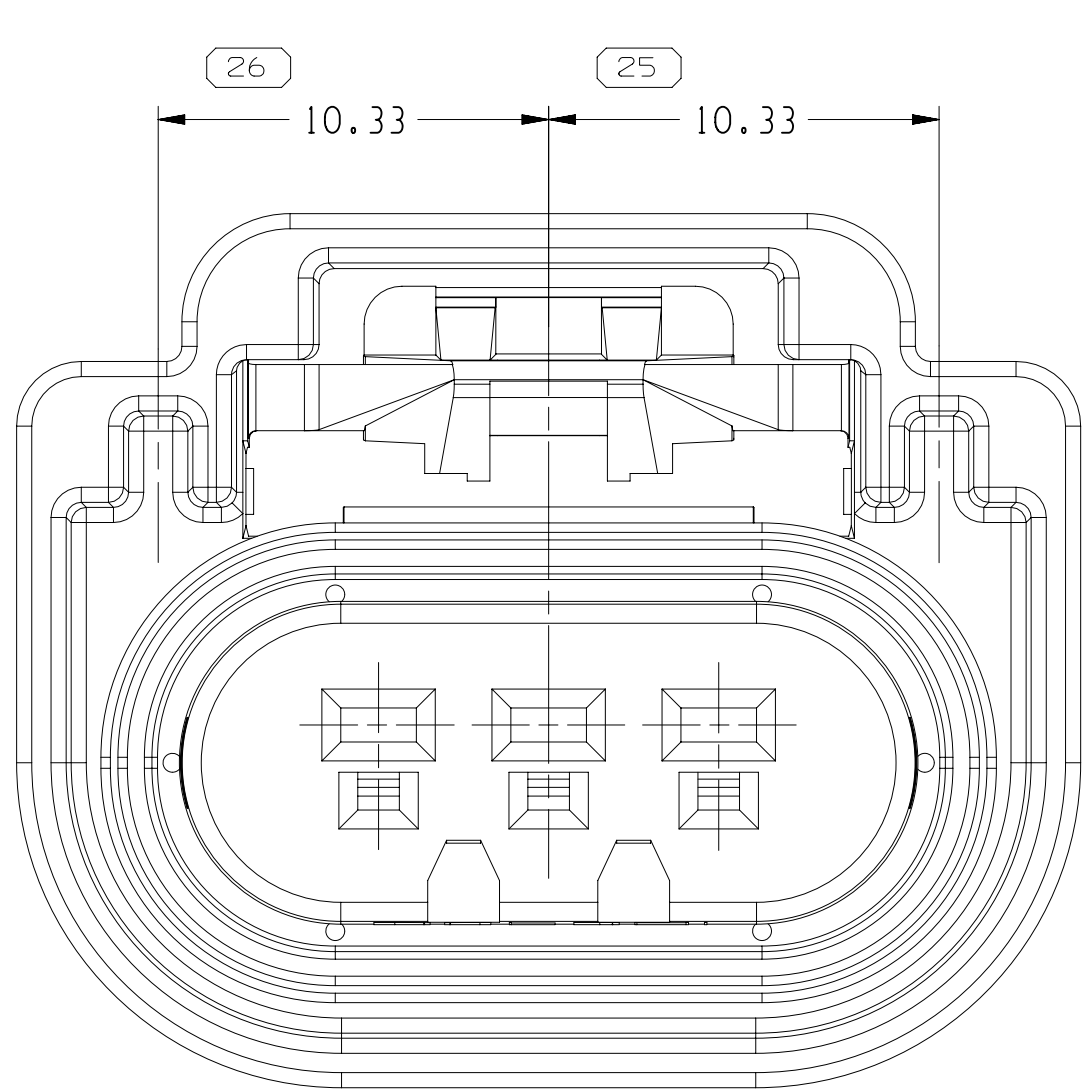
TYPE 106
SAME AS TYPE 102
EXCEPT AS SHOWN



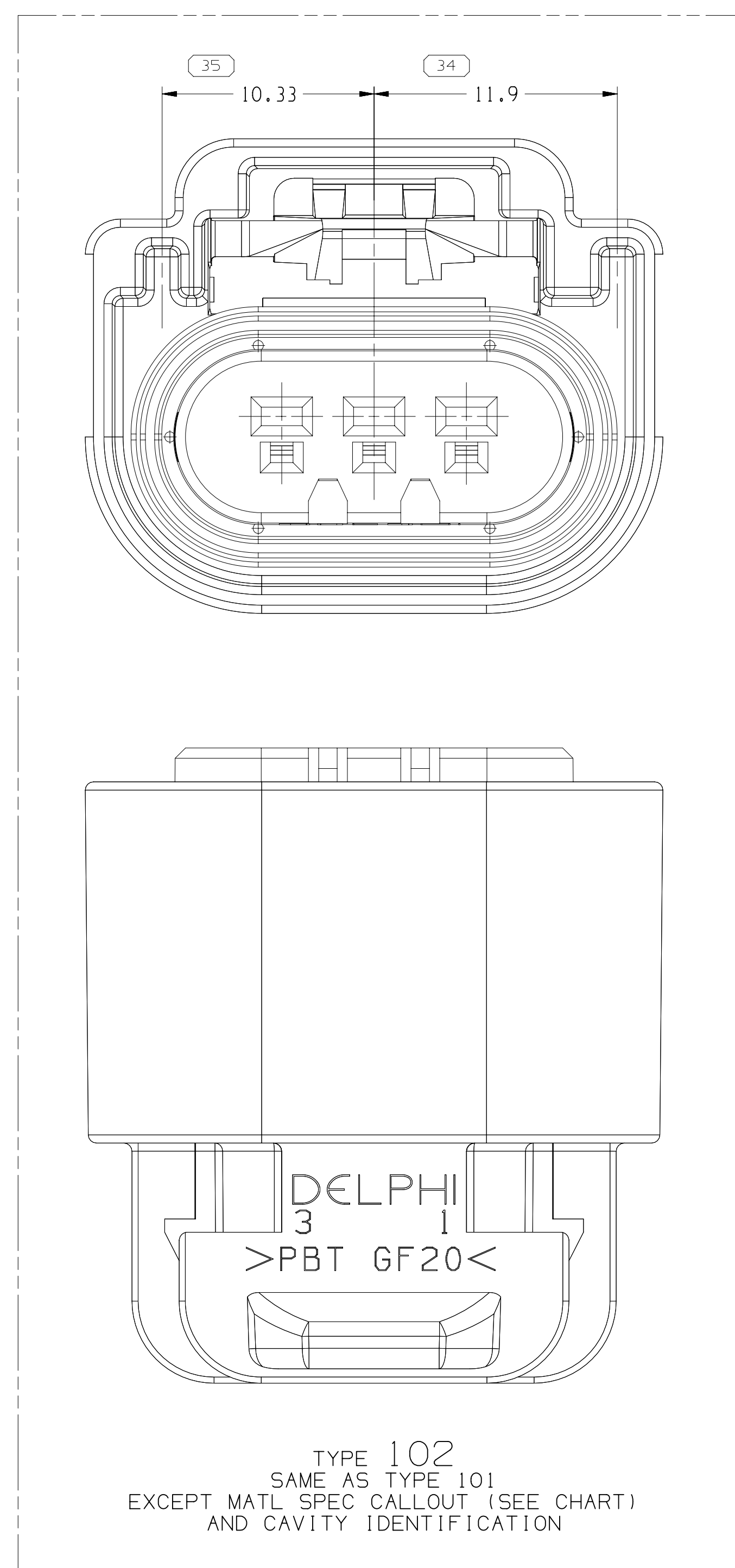
TYPE 103
SAME AS TYPE 102
EXCEPT AS SHOWN



TYPE 108
SAME AS TYPE 102
EXCEPT AS SHOWN

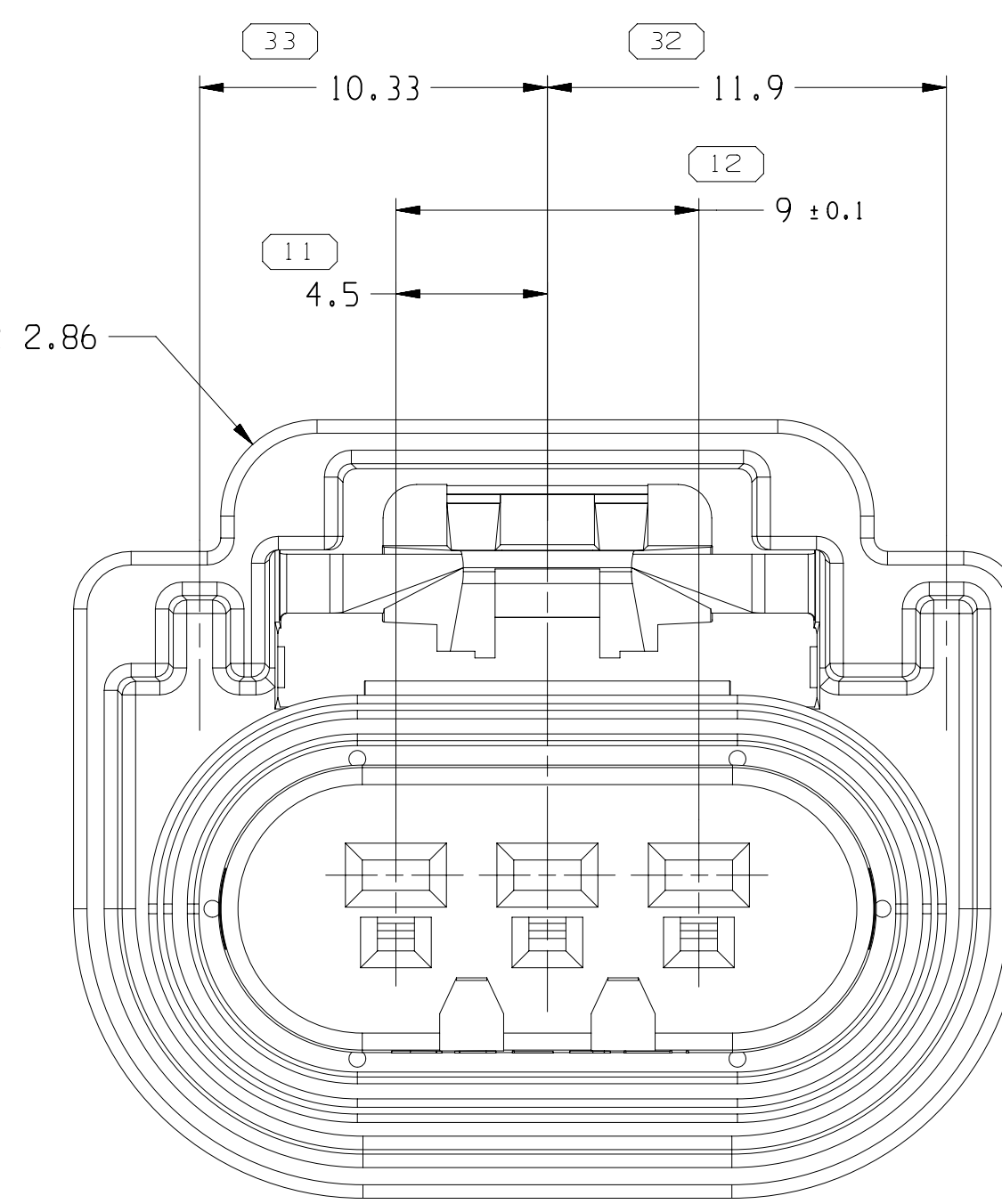
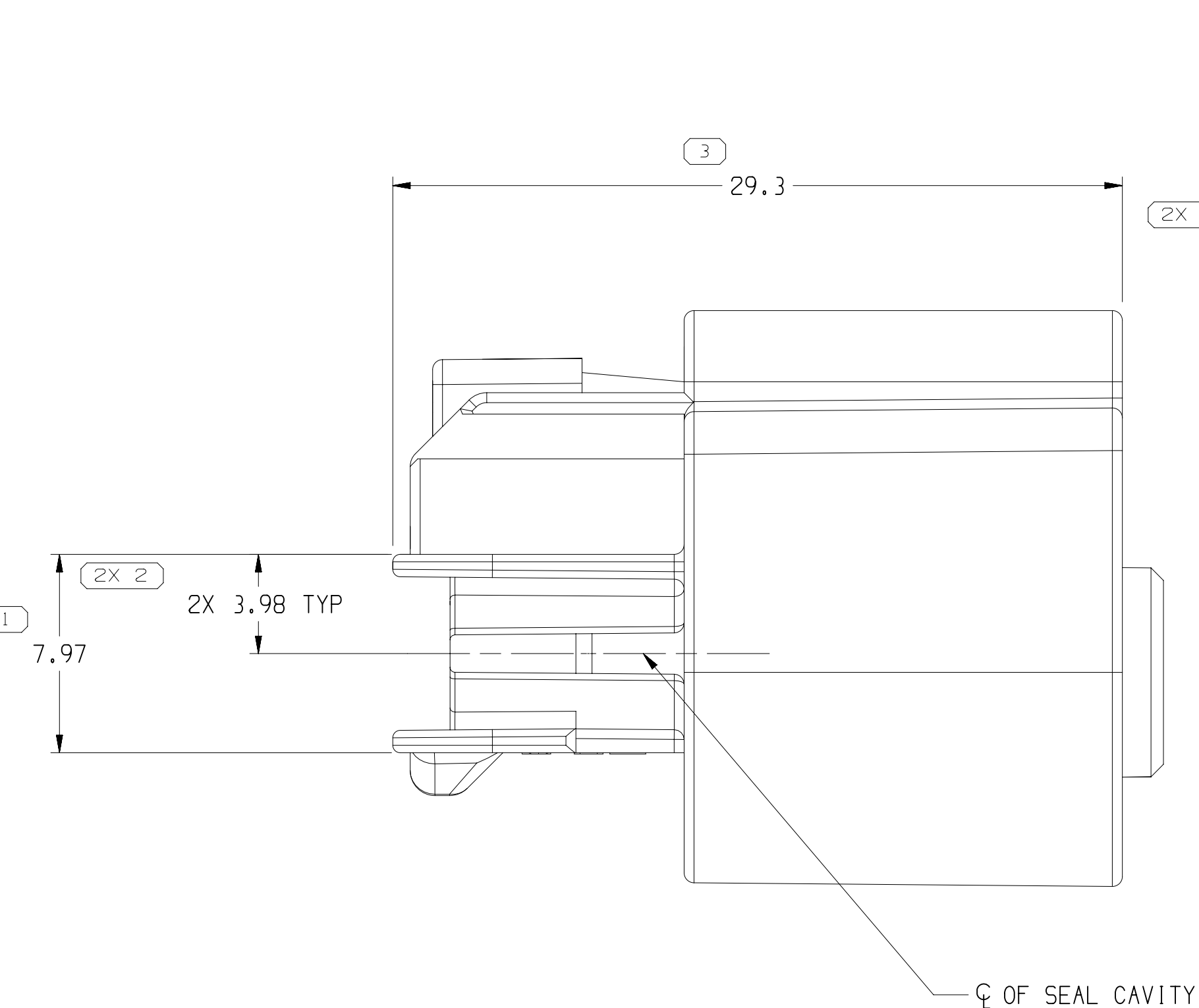
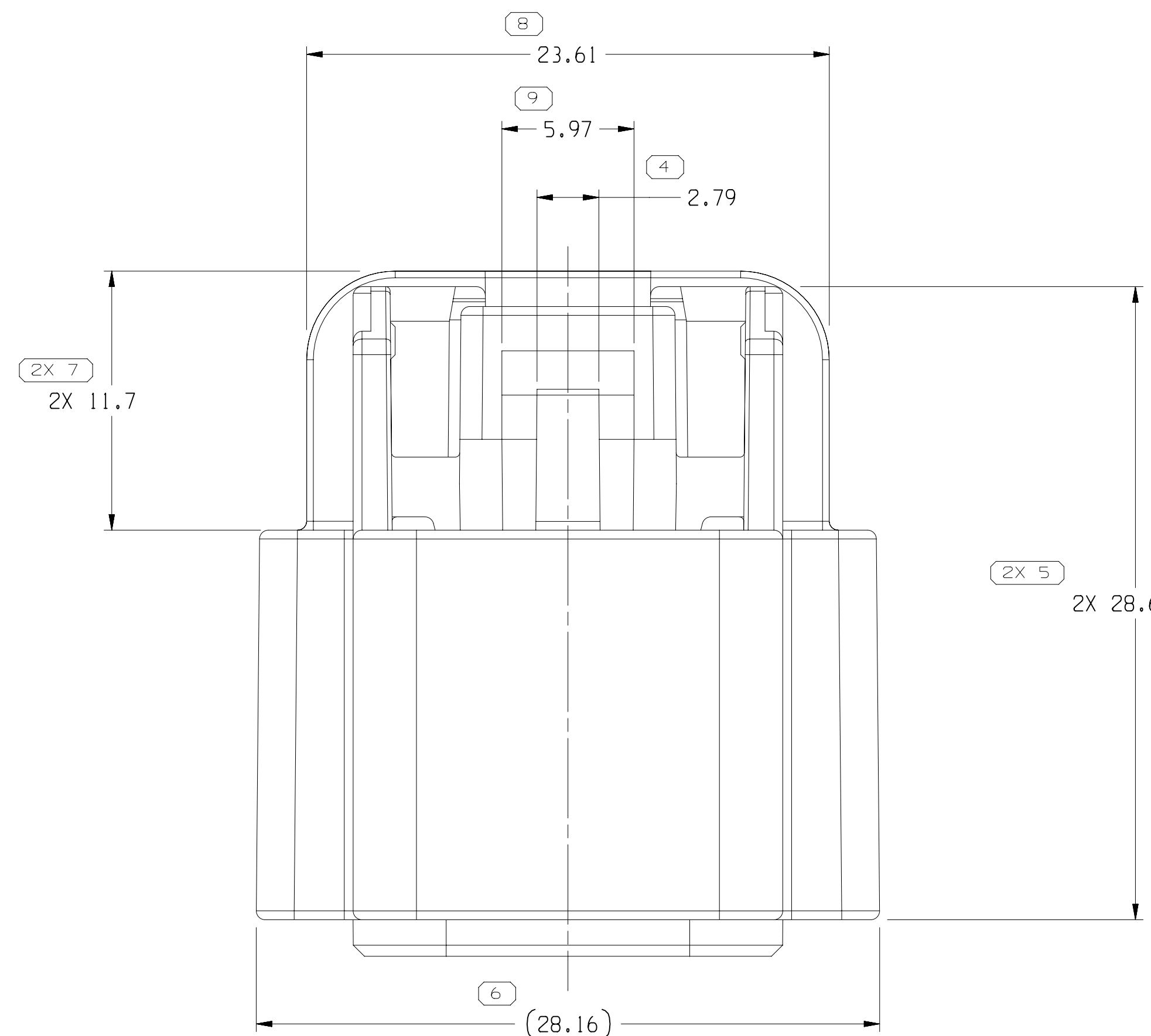


TYPE 105
SAME AS TYPE 102
EXCEPT AS SHOWN

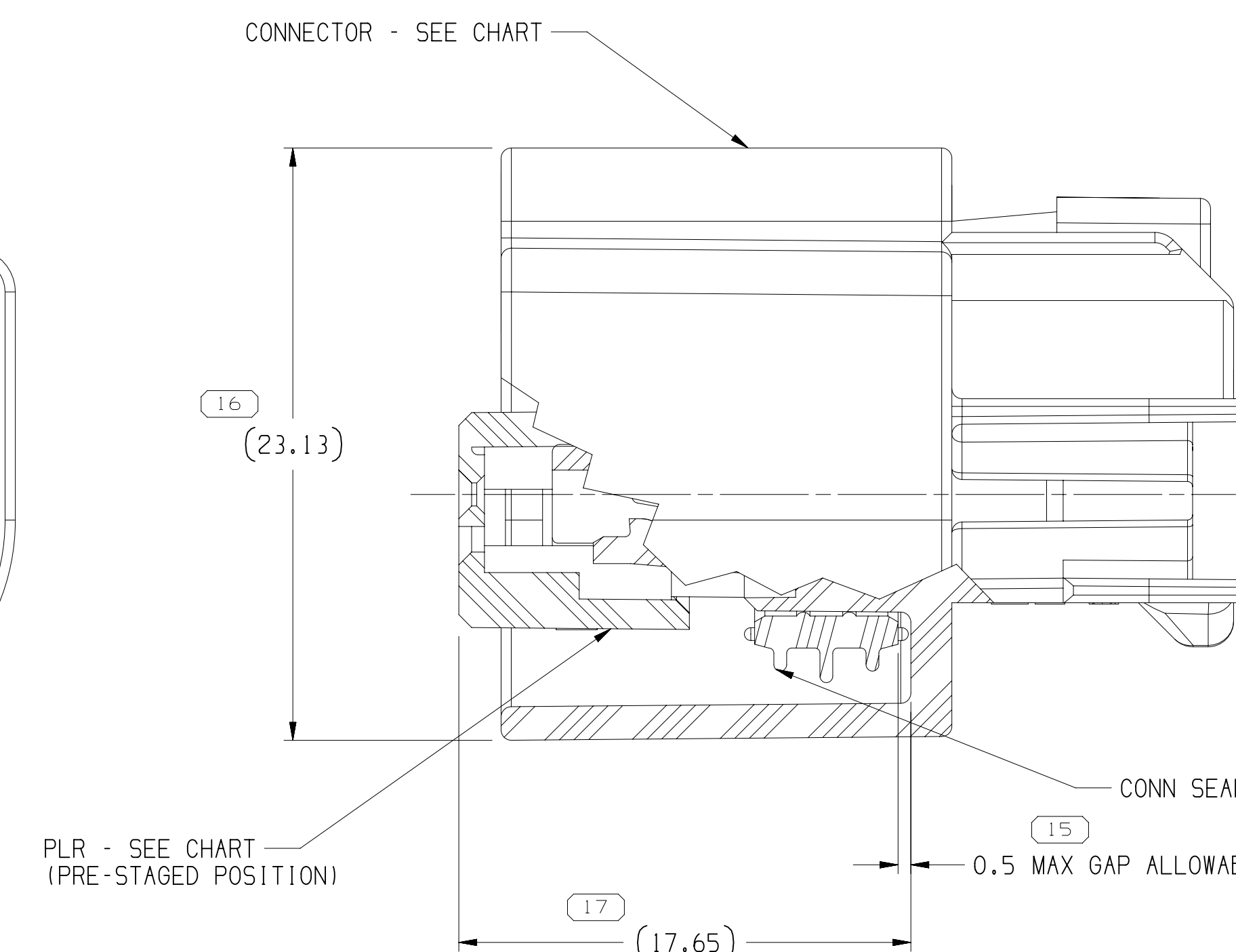
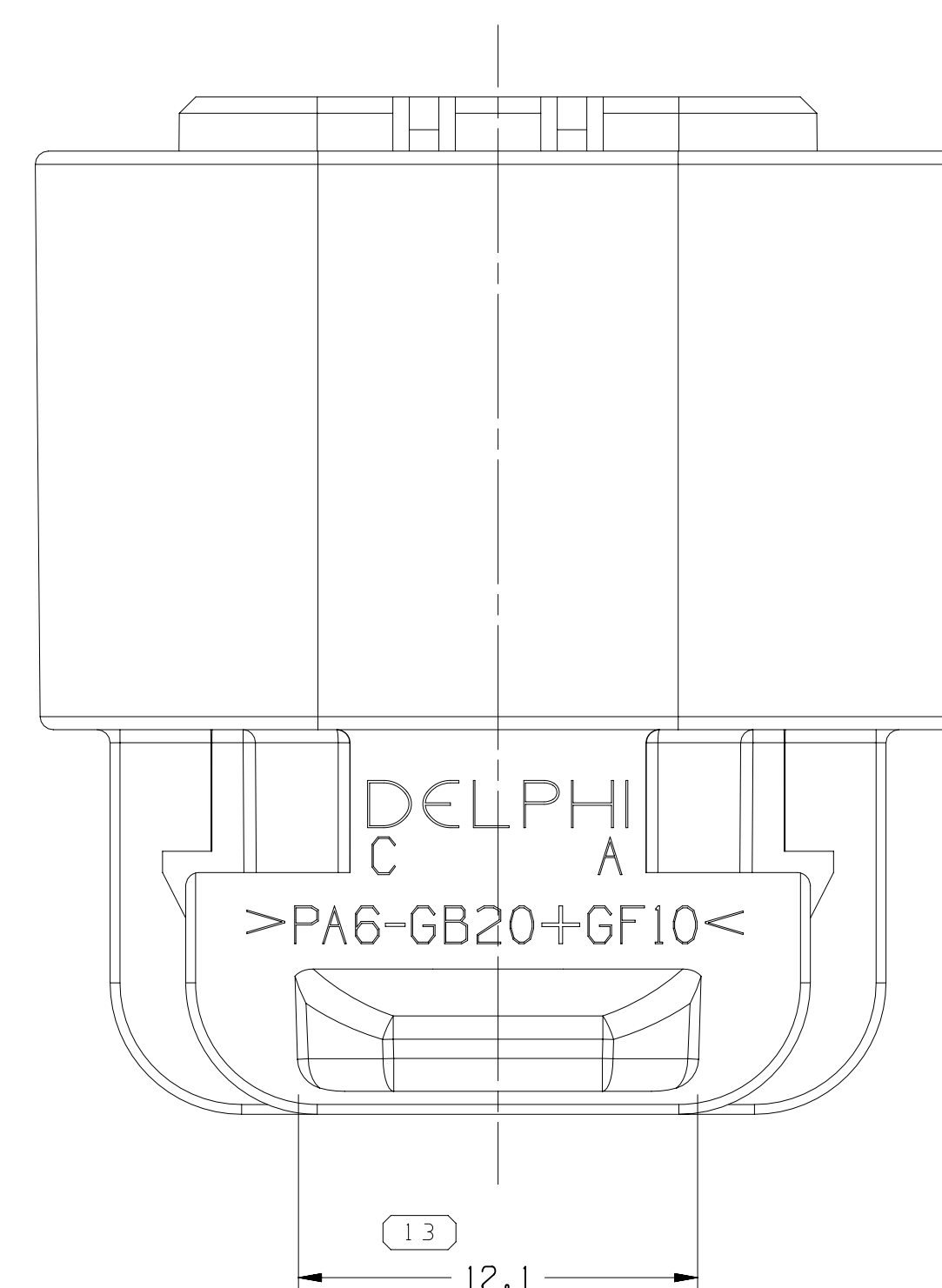


TYPE 102
SAME AS TYPE 101
EXCEPT MATL SPEC CALLOUT (SEE CHART)
AND CAVITY IDENTIFICATION

DRAWING NUMBER									
13511997									
SIZE	SCALE	FRAME NO	SHEET NO	STG	REV	N/P			
A1x3	5:1	2	OF 2	1	OF 3	R 14			



TYPE 101



NOTES

- UNLESS OTHERWISE SPECIFIED AND/OR INDICATED:
DIMENSIONS ARE TO FACE OF VIEW SHOWN AND
AUTOMATICALLY ROUNDED BY COMPUTER FOR INSPECTION
(SEE MATH MODEL FOR PRECISE DIMENSIONS). FOR ALL
OTHER DIMENSIONS NOT SHOWN BUT REQUIRED FOR TOOL
BUILD, SEE MATH MODEL FOR PRECISE TOOL PATH DATA.
- THIS PRODUCT IS NOT CATEGORIZED AS AN APPEARANCE ITEM, MINOR
IMPERFECTIONS INCLUDING, BUT NOT LIMITED TO, FLOW MARKS, COLOR
BLEMISHES, GATE VESTIGES, AND SOFT FLASH THAT DO NOT AFFECT THE
FIT, FORM, OR FUNCTION OF THE PART ARE PERMISSIBLE PER DRNP-4.7-CS-01.
- THIS PART IS NOT CONTROLLED FOR AUTOMATIC FEEDING.
- FOR APPLICATION DATA SEE THE INDIVIDUAL APPLICATION DRAWINGS.
- SEALING CODE TBD
- THIS CONNECTOR MEETS OR EXCEEDS SAE/USCAR-2 REV 4,
TERMINAL DISENGAGE CRITERIA WITH THE APPLICATION
OF A TERMINAL POSITION ASSURANCE (TPA) SECONDARY LOCK.

PART	NO	REV	N/P	RESTRICTED USAGE	REPLACED BY	TYPE	CONNECTOR	MATERIAL	RECYCLING CODE	PLR	CONN SEAL
------	----	-----	-----	------------------	-------------	------	-----------	----------	----------------	-----	-----------

13511997	01	-	-	-	-	-	108	13555983	PLAS PBT GF20	15326810	15326811
13863707	01	-	-	-	-	-	102	13863706	PLAS PBT GF20	15326810	15326811
15355377	02	AL	RESTRICTED	13511995	-	-	110	15355376	PLAS PA6 GB20+GF10 HS	15326810	15326811
13511995	01	AE	-	-	-	-	109	13511994	PLAS PBT GF20	15326810	15326811
13511136	01	AE	-	-	-	-	108	13511130	PLAS PBT GF20	15326810	15326811
13511135	01	AE	-	-	-	-	107	13511129	PLAS PBT GF20	15326810	15326811
13511134	01	AE	-	-	-	-	106	13511128	PLAS PBT GF20	15326810	15326811
13511133	01	AE	-	-	-	-	105	13511127	PLAS PBT GF20	15326810	15326811
13511132	01	AF	-	-	-	-	104	13511126	PLAS PBT GF20	15326810	15326811
13511131	01	AF	-	-	-	-	103	13511125	PLAS PBT GF20	15326810	15326811
13511996	01	AE	-	-	-	-	102	13509896	PLAS PBT GF20	15326810	15326811
15422250	01	AL	RESTRICTED	13511996	-	-	101	15419369	PLAS PA6 GB20+GF10 HS	15326810	15326811

13511997	01	-	-	-	-	-	108	13555983	PLAS PBT GF20	15326810	15326811
13863707	01	-	-	-	-	-	102	13863706	PLAS PBT GF20	15326810	15326811
15355377	02	AL	RESTRICTED	13511995	-	-	110	15355376	PLAS PA6 GB20+GF10 HS	15326810	15326811
13511995	01	AE	-	-	-	-	109	13511994	PLAS PBT GF20	15326810	15326811
13511136	01	AE	-	-	-	-	108	13511130	PLAS PBT GF20	15326810	15326811
13511135	01	AE	-	-	-	-	107	13511129	PLAS PBT GF20	15326810	15326811
13511134	01	AE	-	-	-	-	106	13511128	PLAS PBT GF20	15326810	15326811
13511133	01	AE	-	-	-	-	105	13511127	PLAS PBT GF20	15326810	15326811
13511132	01	AF	-	-	-	-	104	13511126	PLAS PBT GF20	15326810	15326811
13511131	01	AF	-	-	-	-	103	13511125	PLAS PBT GF20	15326810	15326811
13511996	01	AE	-	-	-	-	102	13509896	PLAS PBT GF20	15326810	15326811
15422250	01	AL	RESTRICTED	13511996	-	-	101	15419369	PLAS PA6 GB20+GF10 HS	15326810	15326811

13511997	01	-	-	-	-	-	108	13555983	PLAS PBT GF20	15326810	15326811
13863707	01	-	-	-	-	-	102	13863706	PLAS PBT GF20	15326810	15326811
15355377	02	AL	RESTRICTED	13511995	-	-	110	15355376	PLAS PA6 GB20+GF10 HS	15326810	15326811
13511995	01	AE	-	-	-	-	109	13511994	PLAS PBT GF20	15326810	15326811
13511136	01	AE	-	-	-	-	108	13511130	PLAS PBT GF20	15326810	15326811
13511135	01	AE	-	-	-	-	107	13511129	PLAS PBT GF20	15326810	15326811
13511134	01	AE	-	-	-	-	106	13511128	PLAS PBT GF20	15326810	15326811
13511133	01	AE	-	-	-	-	105	13511127	PLAS PBT GF20	15326810	15326811
13511132	01	AF	-	-	-	-	104	13511126	PLAS PBT GF20	15326810	15326811
13511131	01	AF	-	-	-	-	103	13511125	PLAS PBT GF20	15326810	15326811
13511996	01	AE	-	-	-	-	102	13509896	PLAS PBT GF20	15326810	15326811
15422250	01	AL	RESTRICTED	13511996	-	-	101	15419369	PLAS PA6 GB20+GF10 HS	15326810	15326811

13511997	01	-	-	-	-	-	108	13555983	PLAS PBT GF20	15326810	15326811
13863707	01	-	-	-	-	-	102	13863706	PLAS PBT GF20	15326810	15326811
15355377	02	AL	RESTRICTED	13511995	-	-	110	15355376	PLAS PA6 GB20+GF10 HS	15326810	15326811
13511995	01	AE	-	-	-	-	109	13511994	PLAS PBT GF20	15326810	15326811
13511136	01	AE	-	-	-	-	108	13511130	PLAS PBT GF20	15326810	15326811
13511135	01	AE	-	-	-	-	107	13511129	PLAS PBT GF20	15326810	15326811
13511134	01	AE	-	-	-	-	106	13511128	PLAS PBT GF20	15326810	15326811
13511133	01	AE	-	-	-	-	105	13511127	PLAS PBT GF20	15326810	15326811
13511132	01	AF	-	-	-	-	104	13511126	PLAS PBT GF20	15326810	15326811
13511131	01	AF	-	-	-	-	103	13511125	PLAS PBT GF20	15326810	15326811
13511996	01	AE	-	-	-	-	102	13509896	PLAS PBT GF20	15326810	15326811
15422250	01	AL	RESTRICTED	13511996	-	-	101	15419369	PLAS PA6 GB20+GF10 HS	15326810	15326811

13511997	01	-	-	-	-	-	108	13555983	PLAS PBT GF20	15326810	15326811
13863707	01	-	-	-	-	-	102	13863706	PLAS PBT GF20	15326810	15326811
15355377	02	AL	RESTRICTED	13511995	-	-	110	15355376	PLAS PA6 GB20+GF10 HS	15326810	15326811
13511995	01	AE	-	-	-	-	109	13511994	PLAS PBT GF20	15326810	15326811
13511136	01	AE	-	-	-	-	108	13511130	PLAS PBT GF20	15326810	15326811
13511135	01	AE	-	-	-	-	107	13511129	PLAS PBT GF20	15326810	15326811
13511134	01	AE	-	-	-	-	106	13511128	PLAS PBT GF20	15326810	15326811
13511133	01	AE	-	-	-	-	105	13511127	PLAS PBT GF20	15326810	15326811
13511132	01	AF	-	-	-	-	104	13511126	PLAS PBT GF20	15326810	15326811
13511131	01	AF	-	-	-	-	103	13511125	PLAS PBT GF20	15326810	15326811
13511996	01	AE	-	-	-	-	102	13509896	PLAS PBT GF20	15326810	15326811
15422250	01	AL	RESTRICTED	13511996	-	-	101	15419369	PLAS PA6 GB20+GF10 HS	15326810	15326811

13511997	01	-	-	-	-	-	108	13555983	PLAS PBT GF20	15326810	15326811
13863707	01	-	-	-	-	-	102	13863706	PLAS PBT GF20	15326810	15326811
15355377	02	AL	RESTRICTED	13511995	-	-	110	15355376	PLAS PA6 GB20+GF10 HS	15326810	15326811
13511995	01	AE	-	-	-	-	109	13511994	PLAS PBT GF20	15326810	15326811
13511136	01	AE	-	-	-	-	108	13511130	PLAS PBT GF20	15326810	15326811
13511135	01	AE	-	-	-	-	107	13511129	PLAS PBT GF20	15326810	15326811
13511134	01	AE	-	-	-	-	106	13511128	PLAS PBT GF20	15326810	15326811
13511133	01	AE	-	-	-	-	105	13511127	PLAS PBT GF20	15326810	15326811
13511132	01	AF	-	-	-	-	104	13511126	PLAS PBT GF20	15326810	15326811
13511131	01	AF	-	-	-	-	103	13511125	PLAS PBT GF20	15326810	15326811
13511996	01	AE	-	-	-	-	102	13509896	PLAS PBT GF20	15326810	15326811
15422250	01	AL	RESTRICTED	13511996	-	-	101	15419369	PLAS PA6 GB20+GF10 HS	15326810	15326811

13511997	01	-	-	-	-	-	108	13555983	PLAS PBT GF20	15326810	15326811
13863707	01	-	-	-	-	-	102	13863706	PLAS PBT GF20	15326810	15326811
15355377	02	AL	RESTRICTED	13511995	-	-	110	15355376	PLAS PA6 GB20+GF10 HS	15326810	15326811
13511995	01	AE	-	-	-	-	109	13511994	PLAS PBT GF20	15326810	15326811
13511136	01	AE	-	-	-	-	108	13511130	PLAS PBT GF20	15326810	15326811
13511135	01	AE	-	-	-	-	107	13511129	PLAS PBT GF20	15326810	15326811
13511134	01	AE	-	-	-	-	106	13511128	PLAS PBT GF20	15326810	15326811
13511133	01	AE	-	-	-	-	105	13511127	PLAS PBT GF20	15326810	15326811
13511132	01	AF	-	-	-	-	104	13511126	PLAS PBT GF20	15326810	15326811
13511131	01	AF	-	-	-	-	103	13511125	PLAS PBT GF20	15326810	15326811
13511996	01	AE	-	-	-	-	102	13509896	PLAS PBT GF20	15326810	15326811
15422250	01	AL	RESTRICTED	13511996	-	-	101	15419369	PLAS PA6 GB20+GF10 HS	15326810	15326811

15326811	15326811	15326811	15326811	15326811	15326811
CONN SEAL					

Mouser Electronics

Authorized Distributor

Click to View Pricing, Inventory, Delivery & Lifecycle Information:

[Aptiv:](#)
[13511131](#)