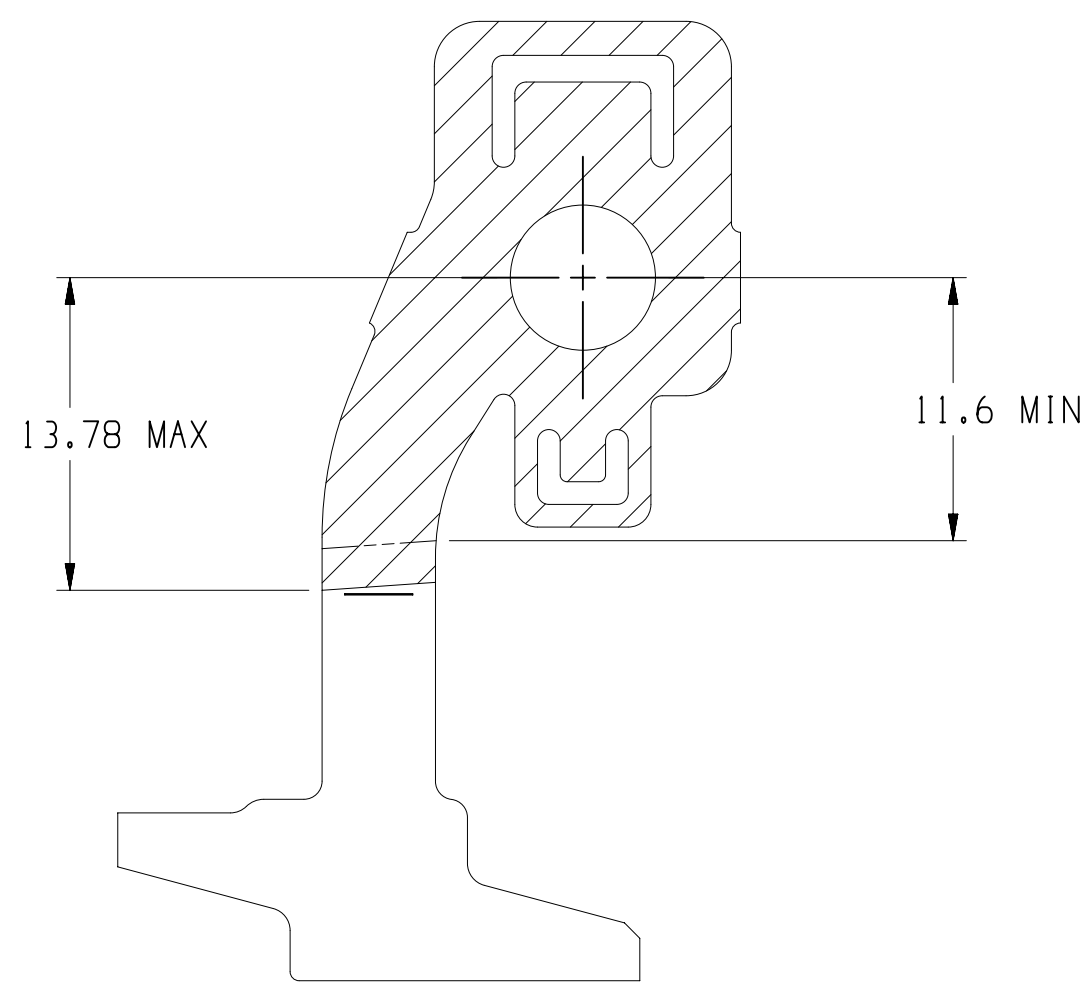
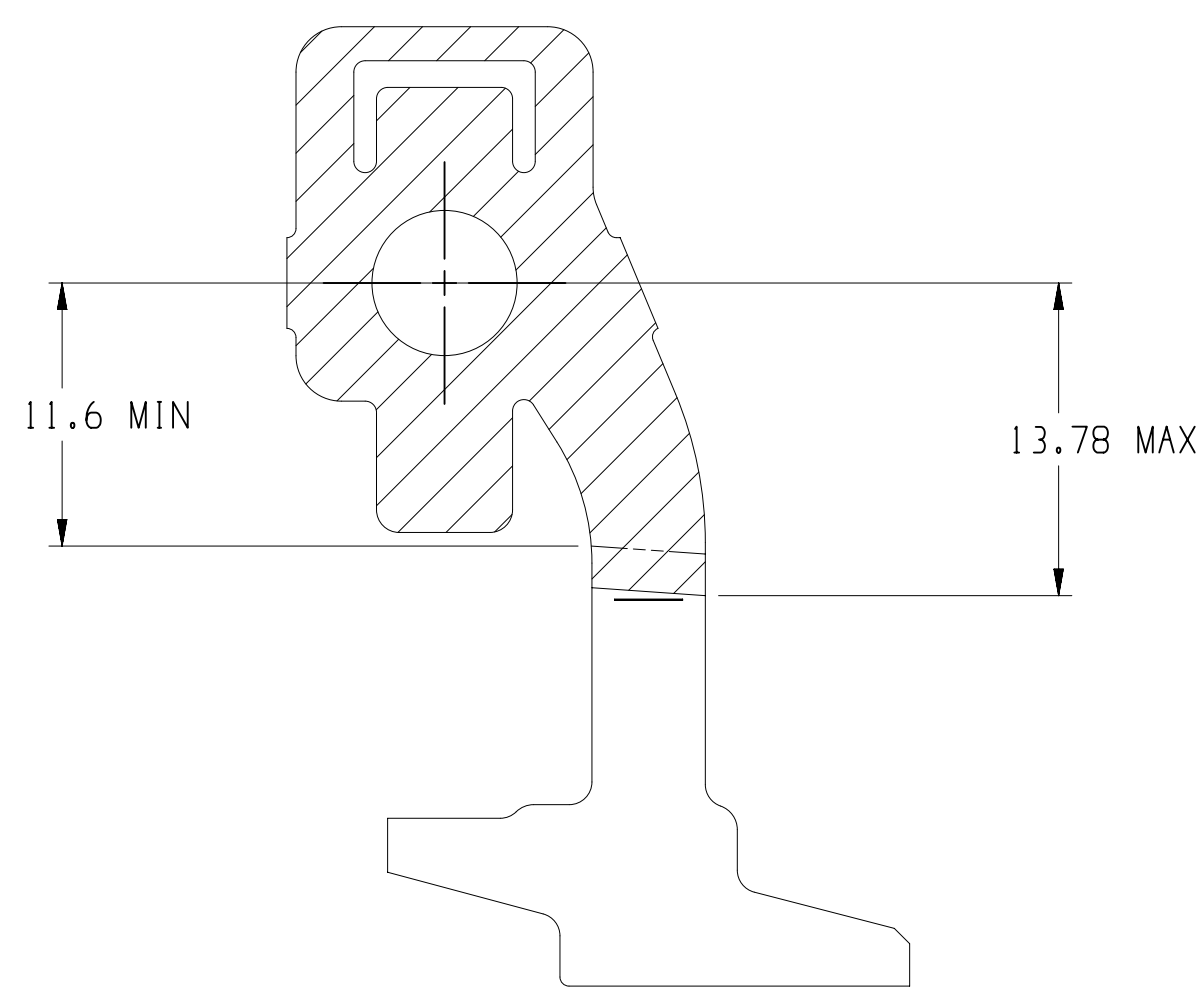


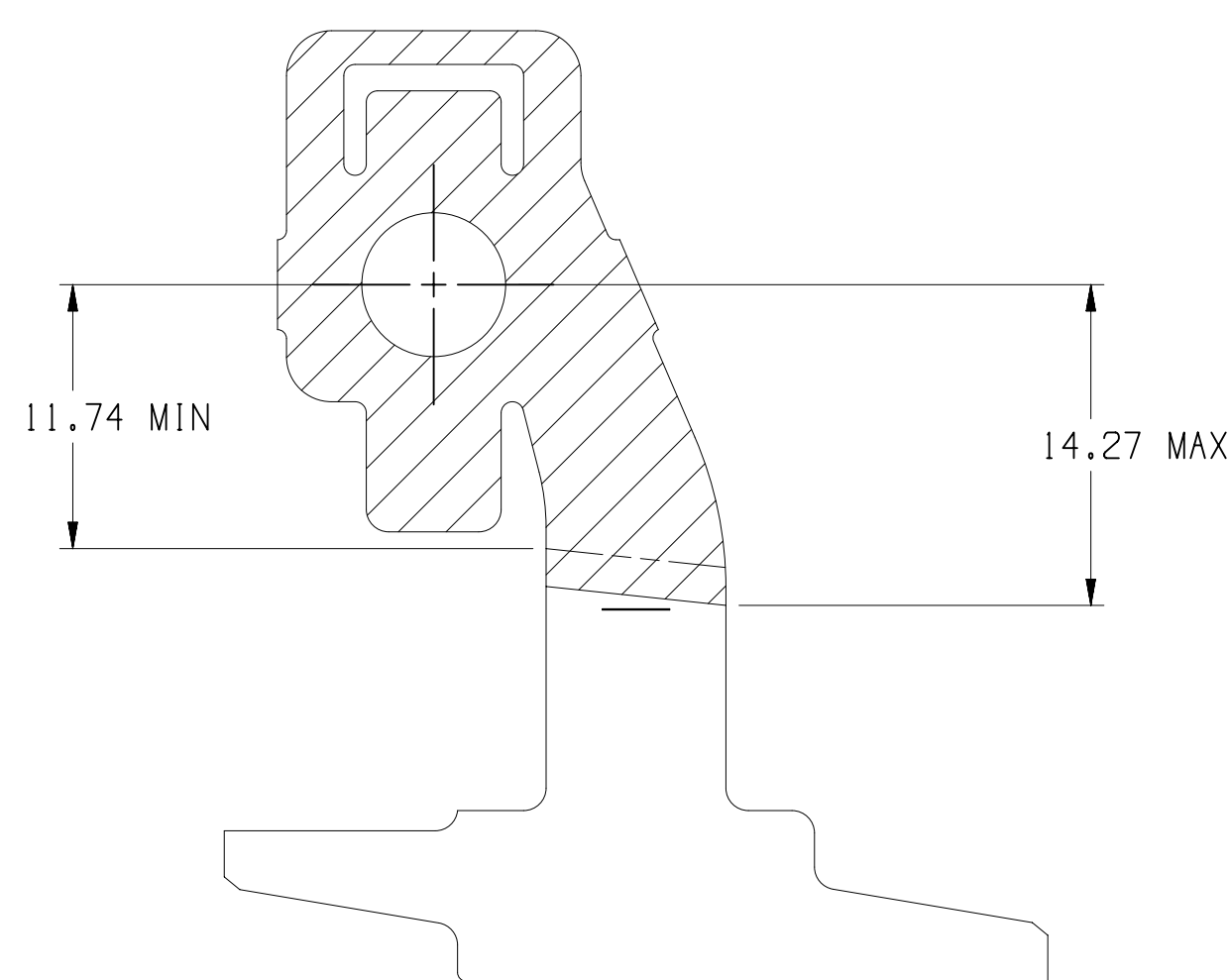
TYPE 1401



TYPE 1402



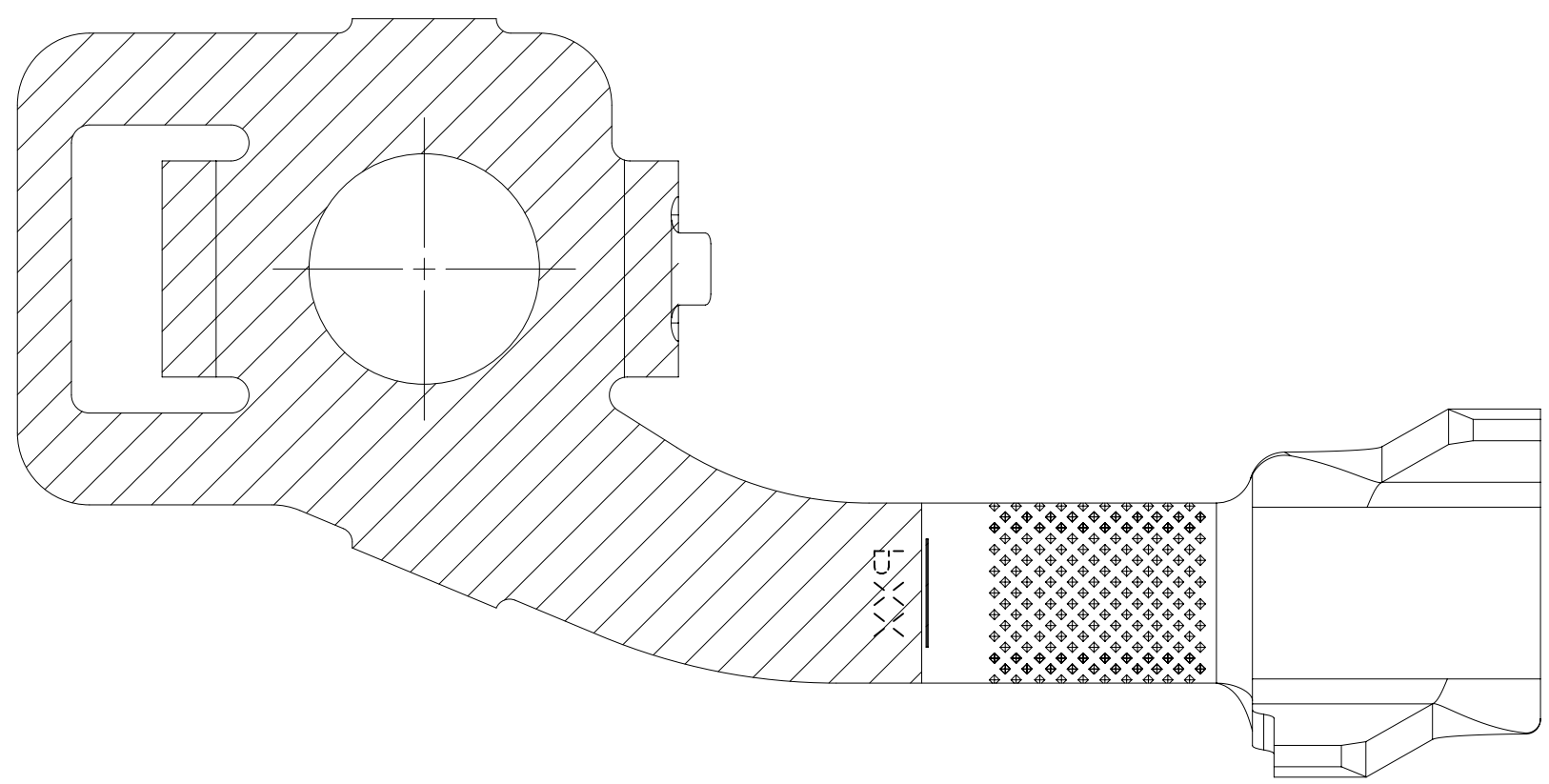
TYPE 1403



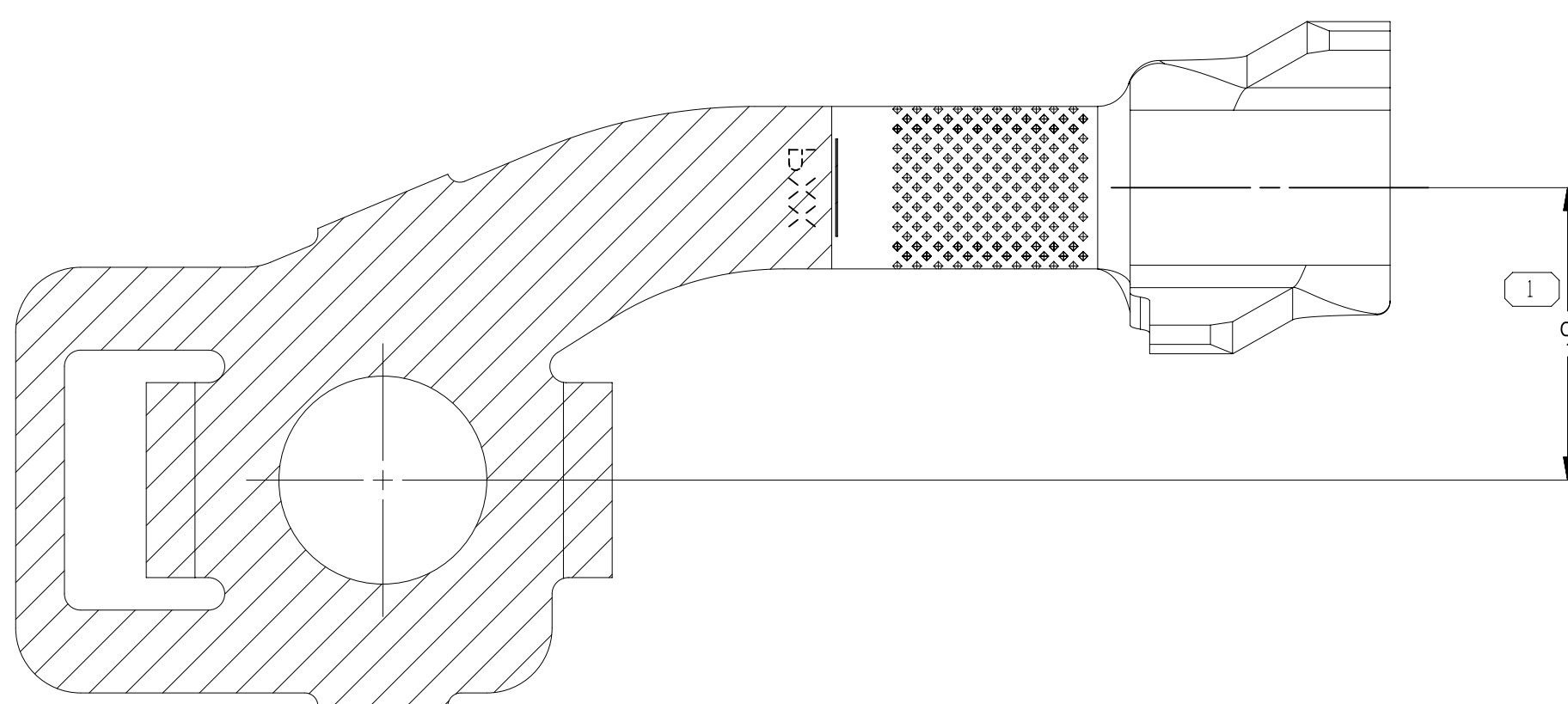
TYPE 1404

OPTIONAL CONSTRUCTION

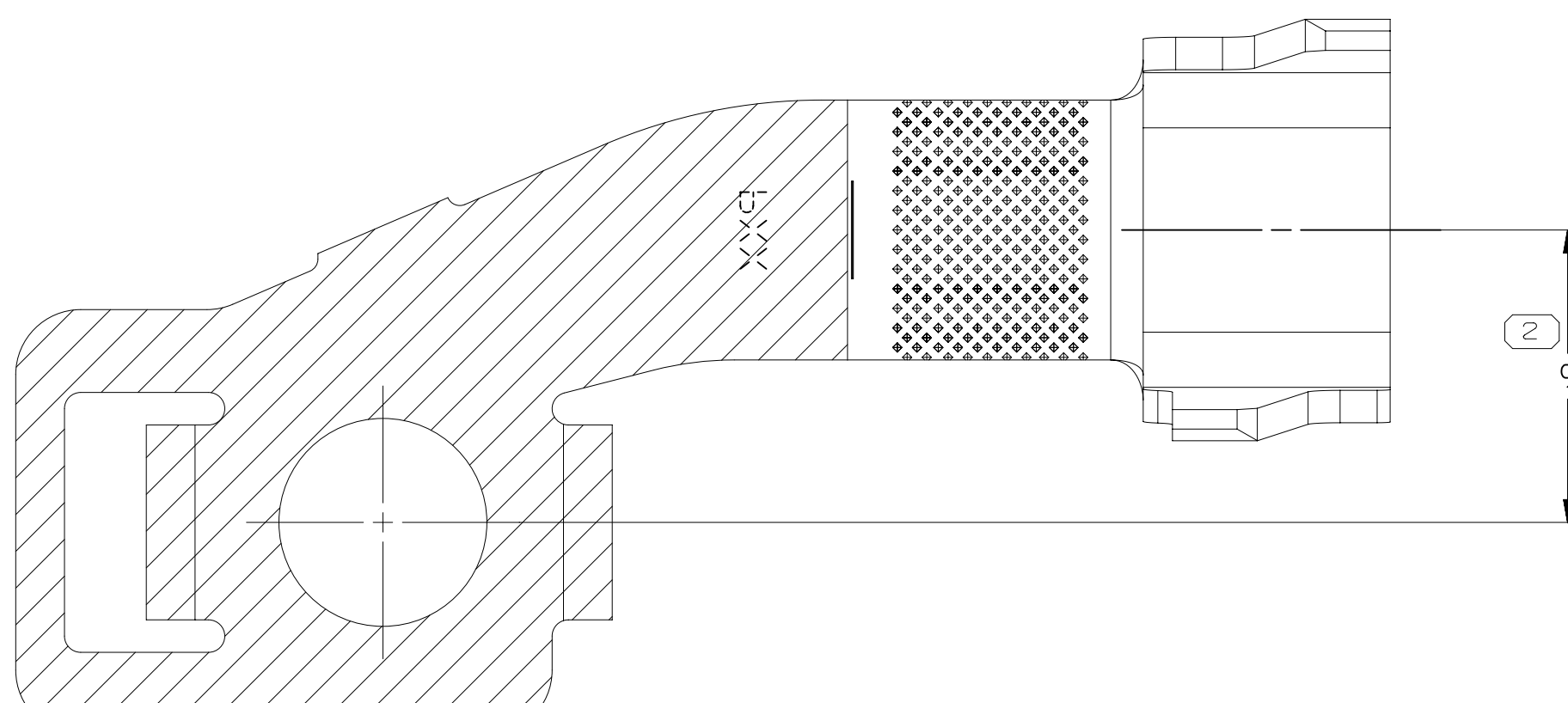
SEE NOTE #14  
SCALE 3:1



TYPE 1402  
SAME AS TYPE 1401  
EXCEPT AS SHOWN



TYPE 1403  
SAME AS TYPE 1402  
EXCEPT AS SHOWN

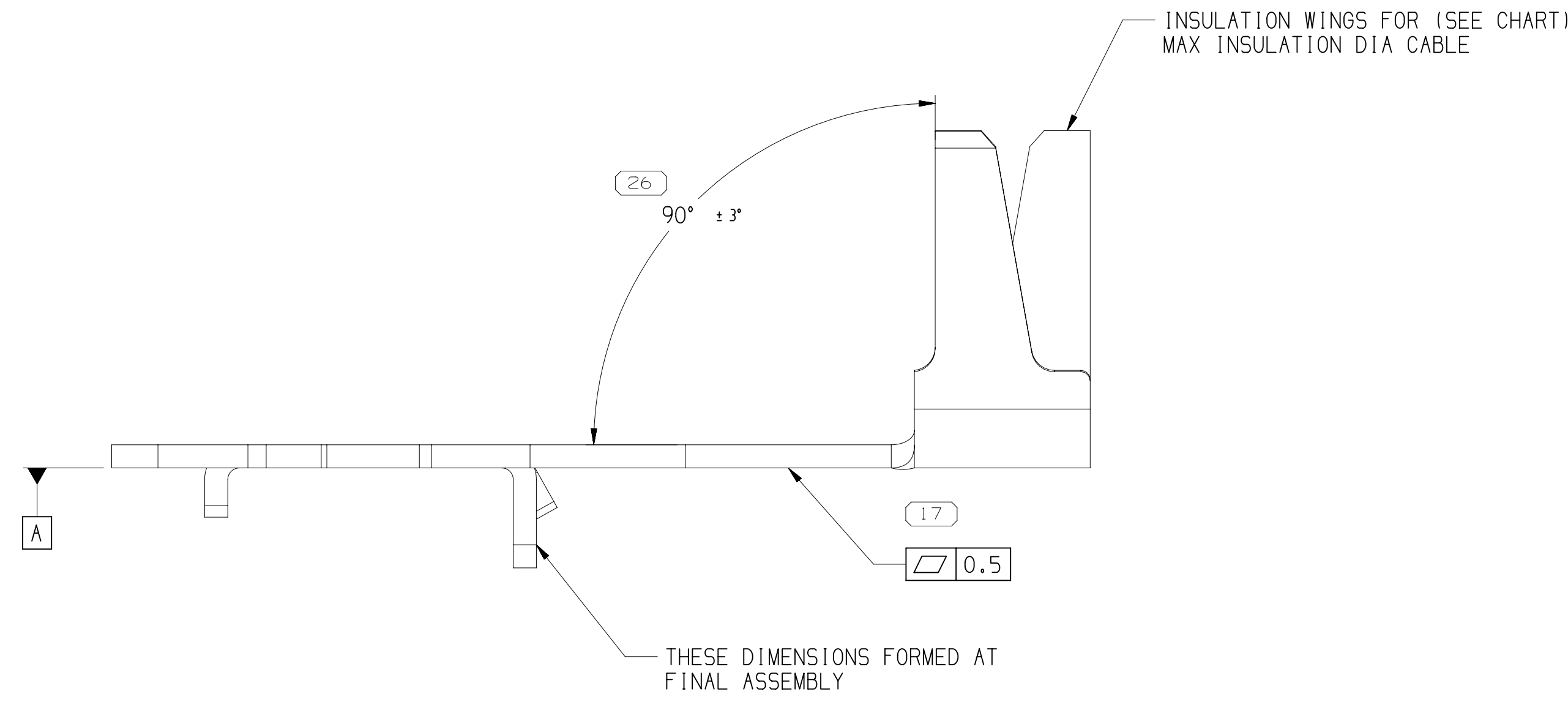
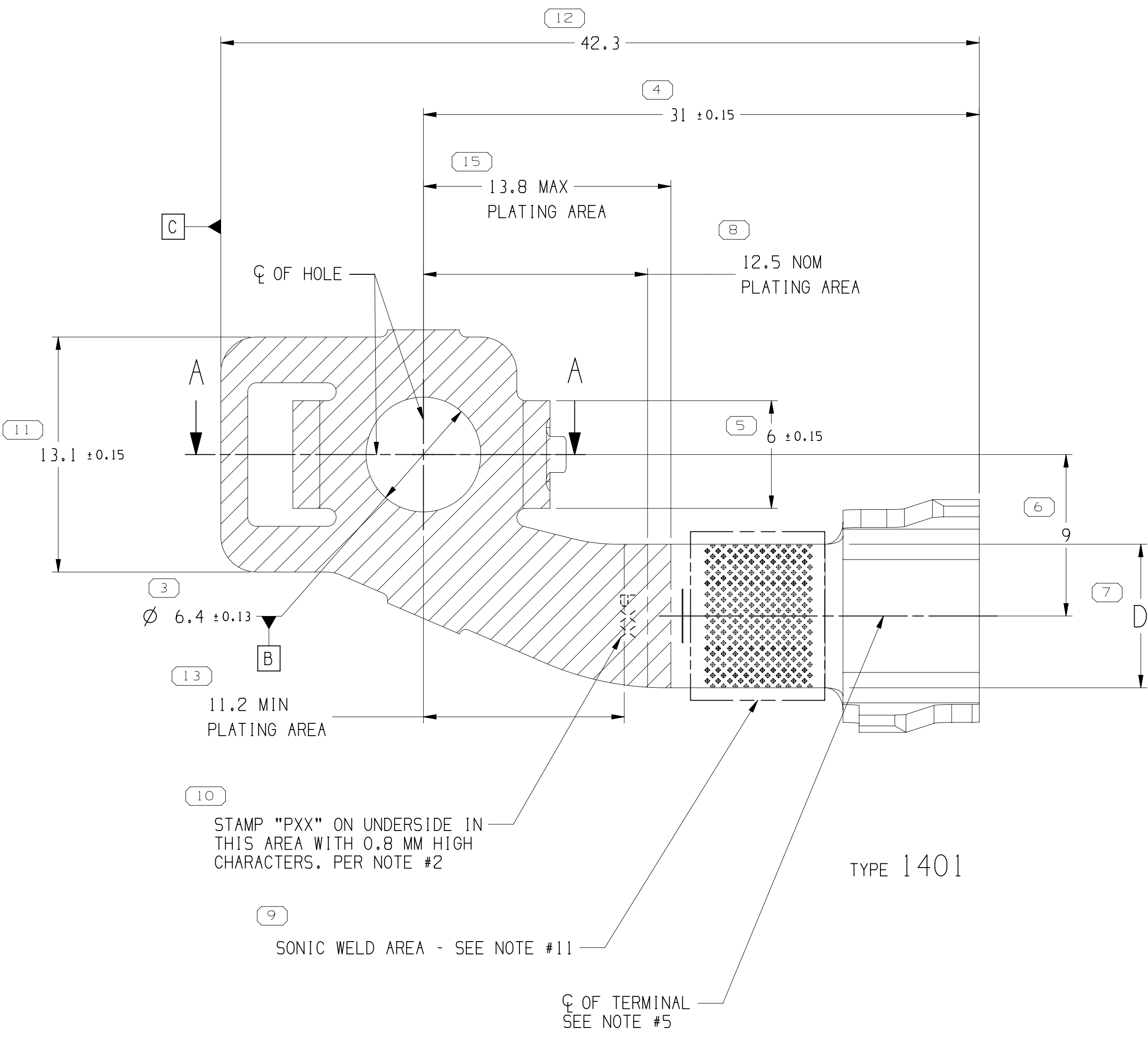
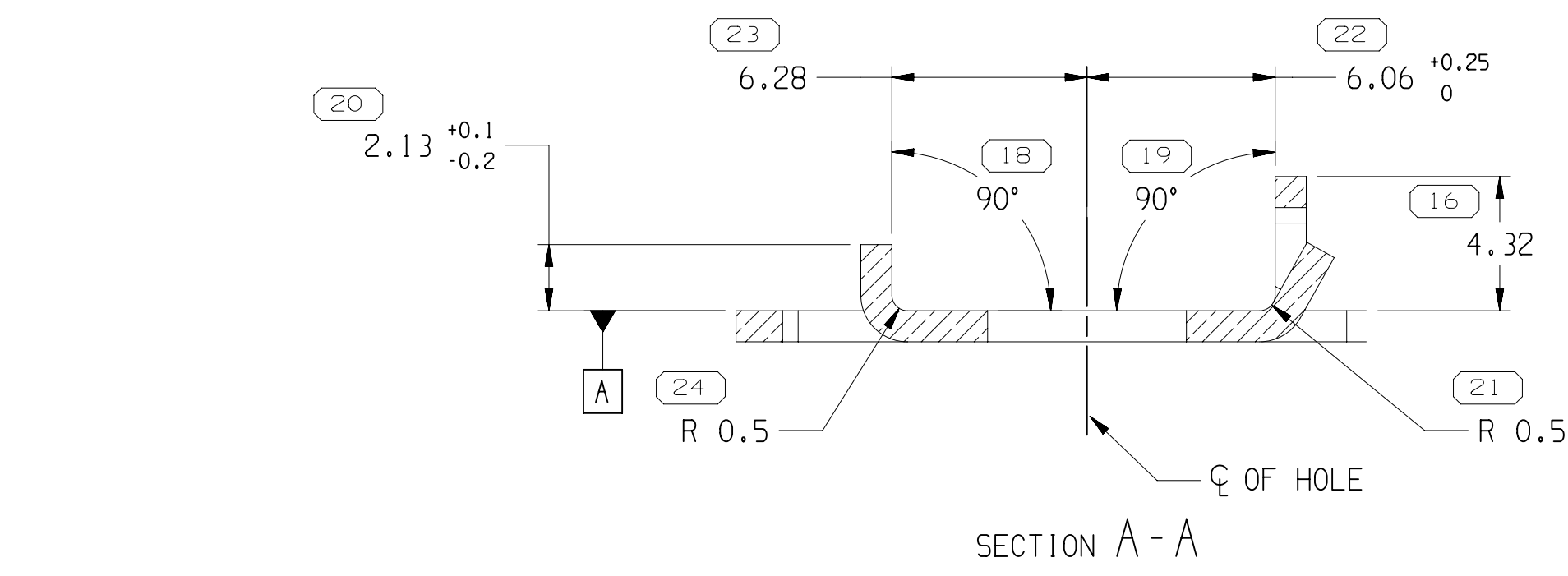


TYPE 1404  
SAME AS TYPE 1403  
EXCEPT AS SHOWN

DRAWING NUMBER	
15485965	
SIZE	SCALE
A1x3	5:1
FRAME NO	SHEET NO
2 OF 2	14 OF 17
REV	INCP
06	-

SEE NOTE #12

PART NO	REV	N/P	TYPE	MAT'L SIZE	MAT'L SPEC	BUNDLE SIZE MM²	NO. OF WIRES (MIN-MAX)	D	F ±0.5
35240168	03	AC	1404	47.18 X 1.0	TIN PLATED COPPER ALLOY	6 - 15.25	1 - 12	8	12.97
35240169	04	AB	1403	47.18 X 1.0	TIN PLATED COPPER ALLOY	0.5 - 6.5	1 - 4	5	10.25
35240170	04	AB	1402	47.18 X 1.0	TIN PLATED COPPER ALLOY	0.5 - 6.5	1 - 8	5	10.25
35240171	03	AC	1401	47.18 X 1.0	TIN PLATED COPPER ALLOY	6 - 15.25	1 - 12	8	12.97
35240171	03	AC	1401	47.18 X 1.0	TIN PLATED COPPER ALLOY	15 - 20	1 - 4	8	12.97



- NOTES
- UNLESS OTHERWISE SPECIFIED AND/OR INDICATED:
    - DIMENSIONS ARE TO FACE OF VIEW SHOWN AND AUTOMATICALLY ROUNDED BY COMPUTER FOR INSPECTION (SEE MATH MODEL FOR PRECISE DIMENSIONS). FOR ALL OTHER DIMENSIONS NOT SHOWN BUT REQUIRED FOR TOOL BUILD, SEE MATH MODEL FOR PRECISE TOOL PATH DATA.
    - "PXX" INDICATES "P" PLUS LAST TWO DIGITS OF MAKE DIE SERIES NUMBER (P01, P02, P03, ETC).
    - 0.4 R PERMISSIBLE ON ALL "SHARP" CORNERS.
    - VISIBLE CRACKS ARE NOT PERMISSIBLE.
    - PART ARE SYMMETRICAL ABOUT CENTERLINE.
    - PART ARE MADE FROM TIN PLATED STOCK.
  - TERMINALS SHALL BE FREE DEBRIS, RESIDUAL ABRASIVE MATERIALS, CORROSION PRODUCTS AND ANY EXTERNAL RESIDUES. NO LUBE EXCESS IS PERMISSIBLE.
  - "+" DENOTES CABLE SIZE OR GAUGE OF SECONDARY LEAD.
  - TERMINAL MUST BE ABLE TO WITHSTAND A TORQUE OF TBD Nm.
  - PARTS MUST BE KEPT THE SONIC WELDING AREA DRY PRIOR TO THE WELDING PROCESS.
  - MINIMUM RETENTION FORCE WITH TOP TERMINAL OF 110N.
  - TERMINALS TO BE LOOSE PIECE
  - OPTIONAL CONSTRUCTION FOR EU ONLY:
    - ALL DIMENSIONS TO BE THE SAME AS PREFERRED CONSTRUCTION EXCEPT PLATING ZONE MEASUREMENT
  - TERMINAL TAB CAN BE PARTIALLY OR FULL PLATED

18	PROCESS SENSITIVE DIMENSION
19	DIMENSIONS ENCLOSED IN ( ) INDICATE REFERENCE DIMENSIONS AND NO TOLERANCE LIMITS ARE ESTABLISHED
20	UNLESS OTHERWISE SPECIFIED
21	FROM
22	TO
23	TOLERANCE UNLESS OTHERWISE SPECIFIED
24	ANGLE AS TOLERANCE

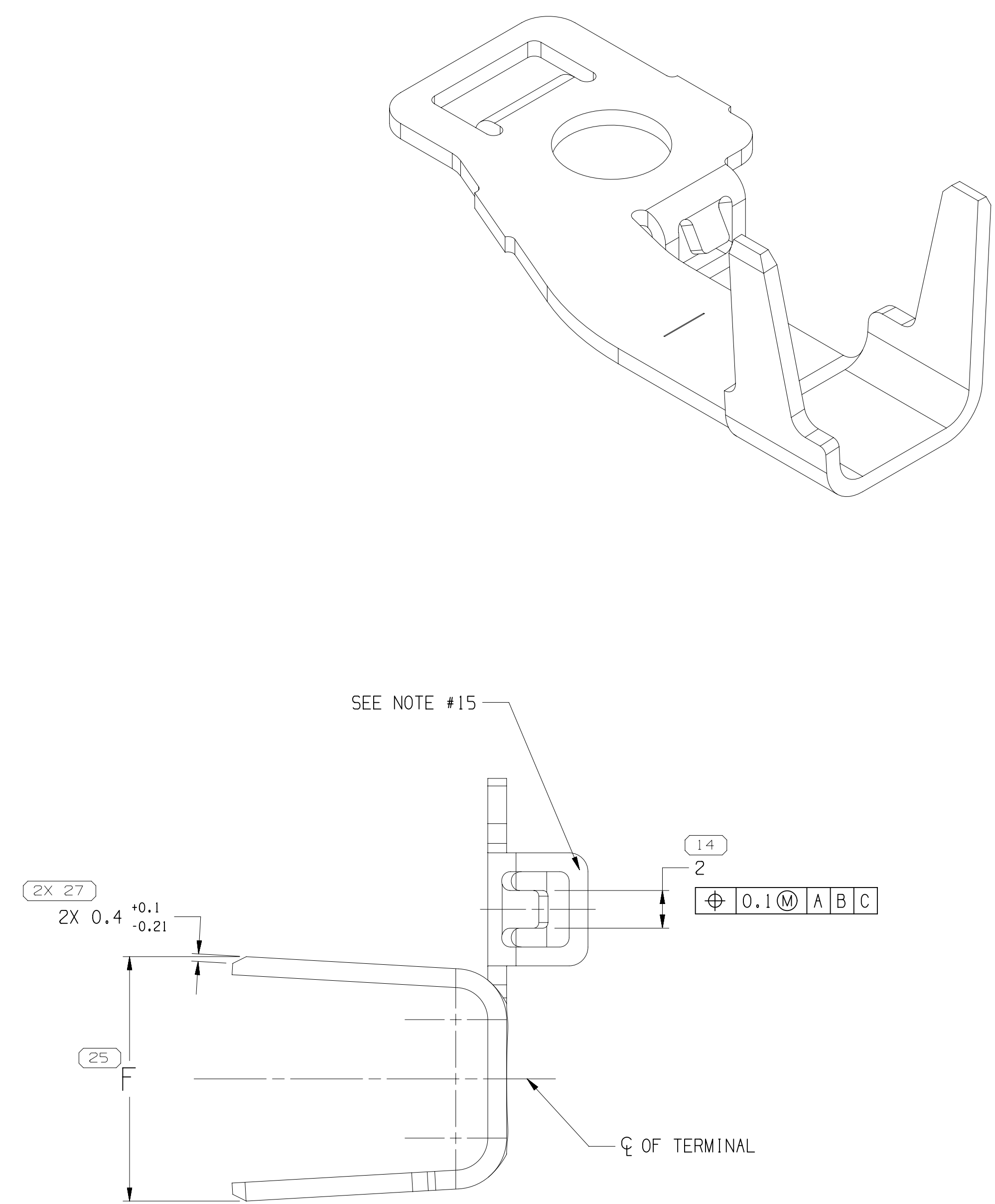
THIRD ANGLE PROJECTION	DO NOT SCALE	USE MATH DATA
------------------------	--------------	---------------

CONNECTION SYSTEMS	
WARREN, IN	
COPYRIGHT 2018 APV, ALL RIGHTS RESERVED.	
THIS DRAWING IS THE PROPERTY OF APV AND CONTAINS APV'S CONFIDENTIAL INFORMATION. THE REPRODUCTION, DISTRIBUTION AND UTILIZATION OF THIS DOCUMENT OR ITS RELATED CAD DATA, AS WELL AS COMMUNICATION OF ANY CONTENT TO OTHERS, WITHOUT EXPRESS AUTHORIZATION, IS PROHIBITED.	
DR	DATE
APV01 ARMANDO HERNANDEZ	250C18
APV02 ARMANDO HERNANDEZ	250C18
APV03 LUIS BERLINO	250C18
APV04	
SUBSTANCES OF CONCERN AND RECYCLED CONTENT (P01, APV11, 10/24/2001)	
REPERY	
SEE CHART	
DRAWING NAME	
TAXI TERM RING SONIC	
DRAWING NUMBER	
15485965	
SIZE	SCALE
A1x3	5:1
FRAME NO	SHEET NO
1 OF 2	14 OF 17
REV	INCP
06	-

SYMBOL DEFINITION	
A DIMENSION WITHOUT AN INSPECTION REPORT SYMBOL DOES NOT REQUIRE INSPECTION. IT MAY BE CONTROLLED ON THE INDIVIDUAL COMPONENT DRAWING.	
TOTAL NO. OF INSPECTIONS REQUIRED	28
LAST NO. USED	27

MISSING SYMBOLS	
NO MISSING SYMBOL NUMBER	

DWG STATUS		ZONE		REVISION HISTORY		AUTH		DR		APV	
250C18	R	01	-	-	35240468-71 - RELEASED PART DRAWING	441115	AHQ	AHQ	LB		
22FE19	R	02	-	-	ALL PARTS - UPDATED PDM ATTRIBUTES	442417	JGO	AGH	AGH		
27JL20	R	03	-	-	4.32 WAS 4.53, [0.3] WAS [0.2], 2.13 ±0.1/0.2 WAS 2.13 ±0.1, 6.36 ±0.25/0 WAS 6.06 ±0.15/0 AND 6.28 ±0.1 WAS 6.06 ±0.15/0	552057	JGO	EVJ	AGH		
09DE20	R	04	-	-	ALL PARTS - [0.5] WAS [0.3], 35240169-70 - REVISED GRAPHICS	553082	JGM	JGM	AGH		
16FE21	R	05	-	-	ALL PARTS - UPDATED PART AVAILABILITY	553580	AHY	AHY	AGH		
05MR21	R	06	-	-	ALL PARTS - UPDATED PDM ATTRIBUTES	553725	LVD	JAA	AGH		



26028421

# Mouser Electronics

Authorized Distributor

Click to View Pricing, Inventory, Delivery & Lifecycle Information:

[Aptiv:](#)

[35240168](#)