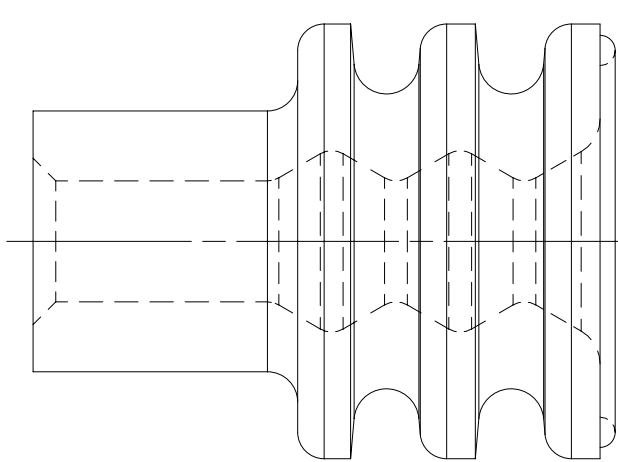
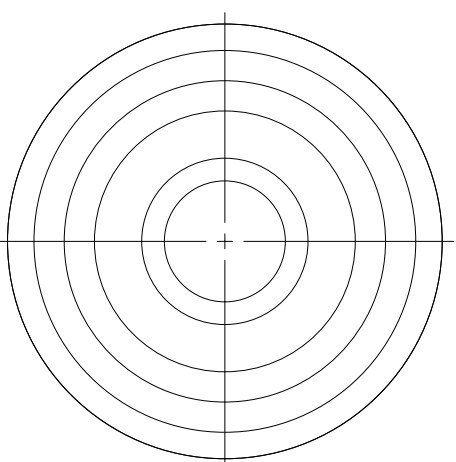
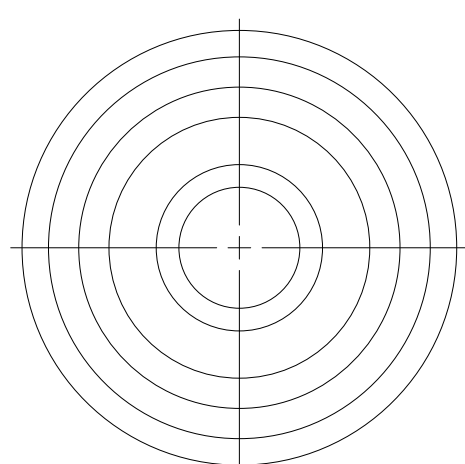
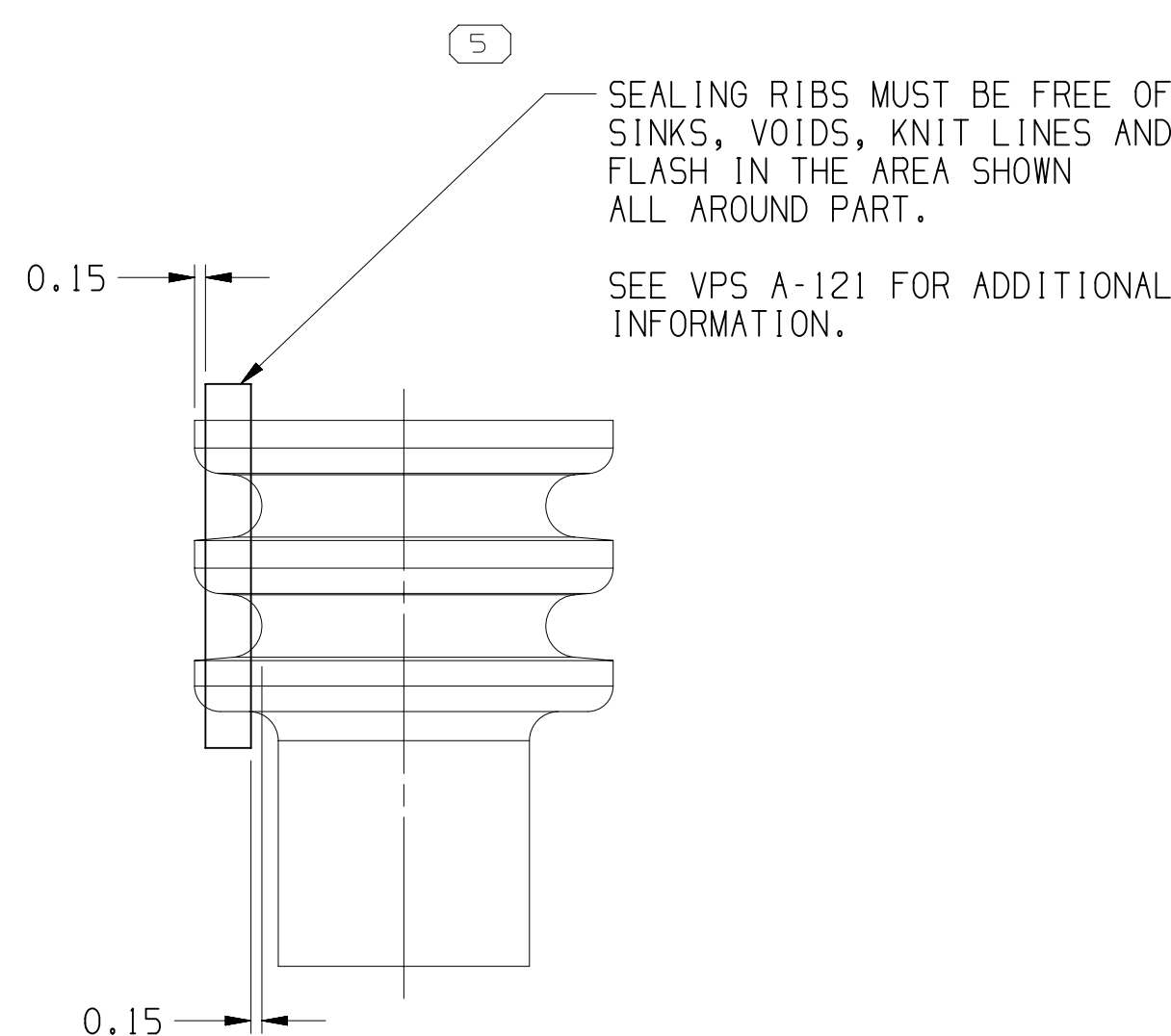


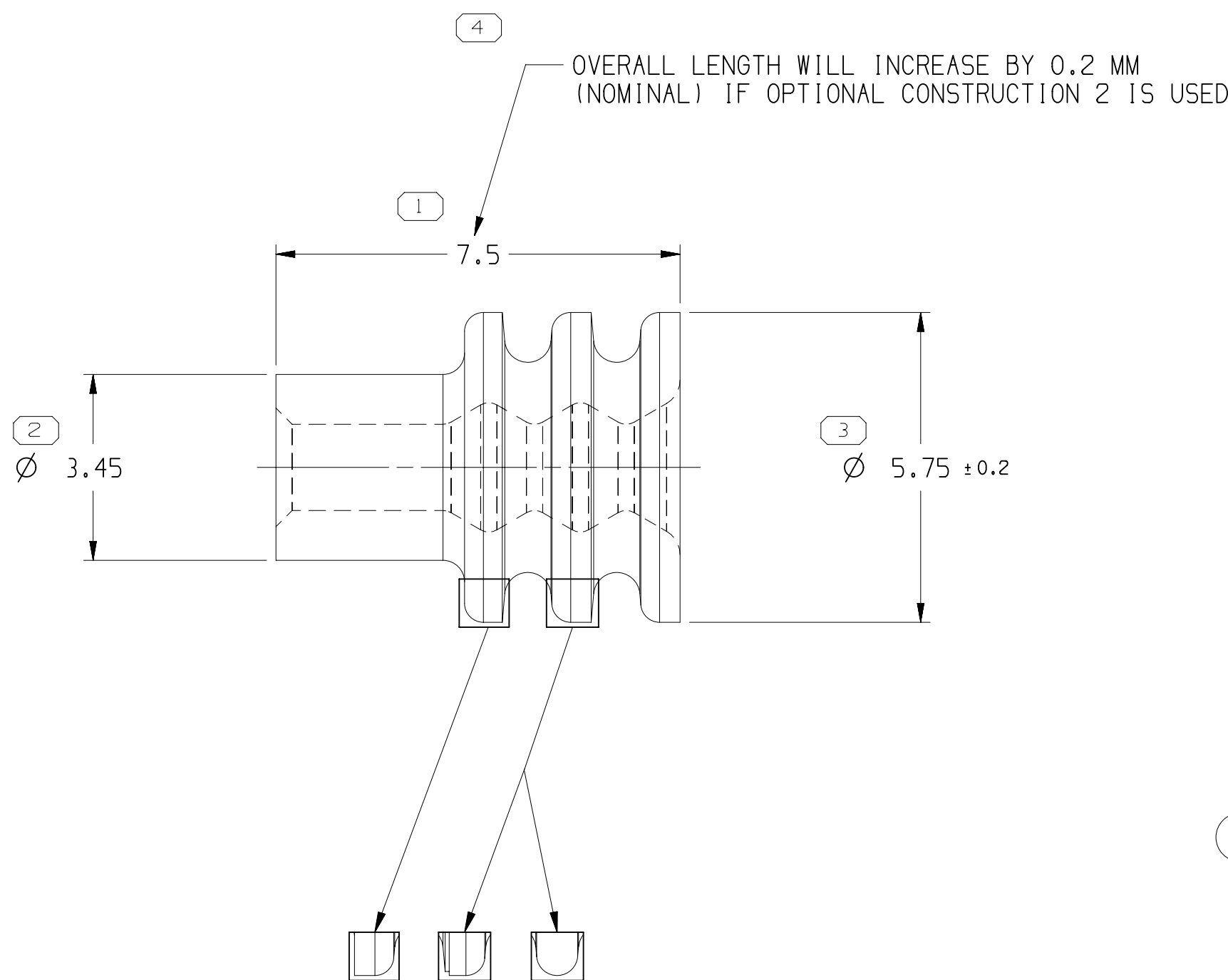
OPTIONAL CONSTRUCTION 1
(ANTI-STICK RING)



OPTIONAL CONSTRUCTION 2
THIS IS THE PREFERRED CONSTRUCTION FOR NEW
TOOL BUILDS
(ANTI-STICK RING)



TYPE 401



SEALING RIBS MAY DIFFER AS SHOWN

PART NO	REV	N/P	CABLE SEAL	MATERIAL SPECIFICATION AND COLOR	TYPE	CABLE O.D. ±0.05 SEE NOTE #6	CAVITY ID	EQUIVALENT CABLE SEAL	NOTES	VOLUME	REPLACED BY	RESTRICTED USAGE
13766444	01	AB		SILICONE METHYL/VINYL GRAY	401	2.15-1.6	5.2	15324979	-	0.099	-	-
13713911	01	AA		SILICONE METHYL/VINYL GREEN	401	2.85-2.03	5.2		SEE NOTE 10	0.092	-	-
15393249	01	AK		FLUOROSILICONE METHYL/VINYL GREEN	401	2.15-1.6	5.2		SEE NOTE 8	0.099	-	-
15324979	01	AK		SILICONE METHYL/VINYL GRAY	401	2.15-1.6	5.2	12186769	-	0.099	-	-
15324976	01	AK		SILICONE METHYL/VINYL WHITE	401	2.15-1.6	5.2	12089678	-	0.099	-	-
15324975	01	AF		SILICONE METHYL/VINYL OCHER	402	1.009-0.995	5.2		SEE NOTE 7	0.109	-	-
15324974	01	AL		SILICONE METHYL/VINYL BLUE	401	1.7-1.29	5.2	12048087	-	0.105	-	-
15324973	01	AL		SILICONE METHYL/VINYL REDDISH BROWN	401	2.85-2.03	5.2	12048086	-	0.092	-	-
12186769	B10	-		SILICONE METHYL/VINYL GRAY	401	2.15-1.6	5.2	15324979	-	0.099	-	-
12129926	B8	-		FLUOROSILICONE METHYL/VINYL ORANGE	401	1.7-1.29	5.2		SEE NOTE 8	0.105	-	-
12110213	B9	-		FLUOROCARBON BLUE	401	2.65-1.85	5.2		-	0.099	-	-
12089678	A12	-		SILICONE METHYL/VINYL WHITE	401	2.15-1.6	5.2	15324976	-	0.099	-	RESTRICTED
12089441	B	-		SILICONE METHYL/VINYL YELLOW	401	2.15-1.6	5.2		-	0.099	-	-
12084193	A9	-		SILICONE METHYL/VINYL TAN	402	1.009-0.995	5.2		SEE NOTE 7	0.109	-	-
12048087	02	AH		SILICONE METHYL/VINYL BLUE	401	1.7-1.29	5.2	15324974	-	0.105	15324974	-
12048086	02	AG		SILICONE METHYL/VINYL REDDISH BROWN	401	2.85-2.03	5.2	15324973	-	0.092	15324973	-

SYMBOL DEFINITION				MISSING SYMBOLS	
A DIMENSION WITHOUT AN INSPECTION REPORT SYMBOL DOES NOT REQUIRE INSPECTION. IT MAY BE CONTROLLED ON THE INDIVIDUAL COMPONENT DRAWING.				NO MISSING SYMBOL NUMBER	
				5	
				5	

DWG STATUS				ZONE		REVISION HISTORY				AUTH		DR		APVD		APVD	
DATE	STG	REV	N/P	CHG													
03DEC99	R	001	-	-			ALL PARTS - REDRAWN TO PD			990009	EOV	CMP	MP				
03DEC99	R	002	-	-			15324973-76 & 15324979 - RELEASED			990005	EOV	CMP	MP				
17MY00	R	003	-	-			15393249 - RELEASED			000005	MAC	MAC	MM				
07NOV00	R	004	-	-			15324973-76 & 15324979 - REVISED			202978	JLZ	EAR	JR				
07NOV00	R	005	-	-			15393249 - REVISED MYLAR & CABLE SEAL ASM COLUMN			204413	EAR	EAR	JR				
19JAO1	R	006	-	-			UPDATED PDM ATTRIBUTES			205150	JLZ	JLZ	JR				
09JAO1	R	007	-	-			15393249 - PM009216 WAS PM002196 AND "G" DIM WAS 5.75 +/- 0.15			205774	MAC	MAC	TP				
29MR01	R	008	-	-			15393249 - MAT'L SPEC WAS PM009216			207669	FMH	FMH	TP				
06NOV01	R	009	-	-			12048086 - UPDATED PDM ATTRIBUTES			215063	MRL	MRL	DLB				
10FEO3	R	10	-	-			15324974 AND 15324976 - UPDATED PDM ATTRIBUTES			236300	BRB	BRB	MLP				
05AP04	R	11	-	-			12052925, 12052924, 15393249, 15324979, 15324976, 15324975, 15324973, 12186769, 12129926, 12110213, 12089678, 12089441, 12084193, 12048087, AND 12048086 - UPDATED MAT'L SPECS, REMOVED MAT'L SPEC NOTES, NOTE 9 WAS 10 AND REMOVED OLD NOTE 9, REMOVED "Ø A" DIM 2 PLCS AND "A" COLUMN FROM CHART, ADDED COLOR COLUM TO CHART			251238	BRB	BRB	MR				
19NOV04	R	12	-	-			REVISED CHART			261378	MLM	MLM	MR				
23FEO5	R	13	-	-			12048086, 12048087, 12084193, 12089678, 12110213, 12186769, 12052924, 12052925, 12124669, 12089442 AND 12186770 ADDED RESTRICTED STATUS; 15324973-4976 AND 15324979 MAT'L SPEC WAS M3466; ADDED NOTES COLUMN TO CHART; NOTE 7 WAS 9, NOTE 8 WAS 7 AND NOTE 9 WAS 8; REMOVED DIM "C" FROM TYPE 402 VIEW			265239	RH	RH	MR				
10JNO5	R	14	-	-			REVISED GRAPHICS			269180	BPS	JVM	MPR				
17FEO6	R	15	-	-			REVISED CHART			277502	MM	MM	MR				
03MR06	R	16	-	-			15324973-76 & 15324979 - MAT'L SPEC WAS M3469			277946	HCG	JVM	MR				
17AUG06	R	17	-	-			15324975 - OBSOLETE			273517	CCV	AUG	MR				
03OC06	R	18	-	-			ALL ACTIVE PARTS - ADDED SEALING RIBS VIEWS, OVERALL LENGTH LABEL, SEALING RIBS LABEL, ANTI-STICK RING OPTIONAL CONSTRUCTION 1 & 2 VIEWS AND DIMS (2 PLCS); 12084193 & 12124669 - REMOVED RESTRICTED, OPTIONAL CONSTRUCTION VIEWS, CONSTRUCTION LINE VIEWS, TYPES 404, 405 & 406 VIEWS AND COLUMNS C, F & G FROM CHART; DIM Ø 3.45 WAS Ø C, DIM Ø 5.75 WAS Ø 2 WAS Ø 6 & DIM 7.5 WAS F, CABLE OD RANGE 1-2 - 1.7 WAS 1-29 - 1.7 AND EQUIVALENT CABLE SEAL COLUMN; 15324973-74, 15324976 & 15324979 - MAT'L SPEC M3469 WAS M3466 & ADDED ALTERNATE MAT'L SPEC M3466XXX			285225	JBD	FRG	MPR				
11OC07	R	19	-	-			ALL ACTIVE PARTS - ADDED NOTE 10, USAGE COLUMN AND CHAMFER TO TYPES 401, REVISED TYPE 403 TO 401			402596	RH	RH	MPR				
30SE08	R	20	-	-			13713910 & 13713911 - RELEASED			406278	RRR	AGN	RRR				
01MY09	R	21	-	-			ALL ACTIVE PARTS - UPDATED MAT'L SPEC TO GENERIC CALLOUT, REMOVED ALTERNATE MAT'L SPEC COLUMN FROM CHART; 12186769 - REMOVED NOTE FROM CHART AND 13713910 & 13713911 - OBSOLETE			407894	RTV	AUG	MPR				
03JUN09	R	22	-	-			13766444 - RELEASED			408127	ECB	AUG	JOS				
24JUL09	R	23	-	-			ALL PARTS - ADDED VOLUME COLUMN AND REMOVED COLOR COLUMN			408462	ECB	AUG	MPR				
30OC09	R	24	-	-			12084193 - UPDATED PDM ATTRIBUTES			409370	JAR	JAR	MPR				
15MY10	R	25	-	-			UPDATED PDM ATTRIBUTES			410847	MAL	MAL	JFB				
15JUN10	R	26	-	-			12052924-25, 12089442, 12124669, 12146011, 12186770 & 13713910 - MOVED TO SHT 6; 12048086-87 & 12089678 - OBSOLETE AND ADDED "REPLACED BY" COLUMN ON CHART			411067	AGM	JAA	MPR				
12JUL11	R	27	-	-			15324973 - UPDATED PDM ATTRIBUTES			413028	AHY	DMC	GEW				
13SE19	R	28	-	-			12089678 - REINSTATED AND ADDED RESTRICTED USAGE COLUMN			444511	JOO	JAA	JAF				
05OC21	R	29	-	-			ALL ACTIVE PARTS - REVISED "TO IMPROVE SEAL" NOTE			555461	GDH	JAA	ACR				

NOTES

- UNLESS OTHERWISE SPECIFIED AND/OR INDICATED:
 - DIMENSIONS ARE TO FACE OF VIEW SHOWN AND AUTOMATICALLY ROUNDED BY COMPUTER FOR INSPECTION (SEE MATH MODEL FOR PRECISE DIMENSIONS). FOR ALL OTHER DIMENSIONS NOT SHOWN BUT REQUIRED FOR TOOL BUILD, SEE MATH MODEL FOR PRECISE TOOL PATH DATA.
 - SEALING RIBS ARE IDENTICAL, EXCEPT AS SHOWN.
 - PARTS NOT MADE ON FLASHLESS MOLDS MUST BE DEFLASHED, WASHED AND DRIED AFTER MOLDING. WASHING SHOULD OCCUR WITHIN 12 HOURS AFTER MOLDING.
 - PARTS ARE TO BE PACKAGED IN SEALED PLASTIC BAGS. GROSS WEIGHT INCLUDING CARTON IS NOT TO EXCEED 34 POUNDS.
 - PARTS MUST BE MADE FROM VIRGIN MATERIAL ONLY.
 - TO IMPROVE SEAL PROCESSING ON SLIPPERY OR SMOOTH CABLE INSULATION, THE APPLICATION ENGINEER MAY SPECIFY THE NEXT SMALLER SEAL SIZE P/N IN PLACE OF THE INDICATED SEAL FOR THE "CABLE O.D." LISTED IN THE CHART.
- DESIGNED FOR 0.8 MM² SOLID CORE DRAIN WIRE Ø 1.002 ±0.007
- PARTS MADE OF FLUOROSILICONE MUST BE POST-CURED FOR 4 HRS AT 400° F.
- THIS PRODUCT IS NOT CATEGORIZED AS AN APPEARANCE ITEM, MINOR IMPERFECTIONS INCLUDING, BUT NOT LIMITED TO, FLOW MARKS, COLOR BLEMMISHES, GATE VESTIGE, AND SOFT FLASH THAT DO NOT AFFECT THE FIT, FORM, OR FUNCTION OF THE PART ARE PERMISSIBLE PER EANP-4-3-CS-01-EN.
- P/N 13713911 MUST BE POST-BAKED FOR 4 HOURS AT 400° F.
- SEE 12010295 SHEET 6 FOR MYLAR ASSEMBLY INFORMATION.

A LINE DRAWN THROUGH A PART NUMBER INDICATES THAT PHYSICAL PARTS ARE NOT AVAILABLE FOR ORDERING.	
PART NUMBERS THAT DO NOT HAVE A LINE PRESENT INDICATE THAT PHYSICAL PARTS ARE AVAILABLE FOR ORDERING.	
CONTACT APTIV SALES TO ASSURE AVAILABILITY OF PARTS.	
DWG TYPE	
PART DRAWING	
STYLE	
VOLUME (CM)	
DISTR CODE	
D	
UNLESS OTHERWISE SPECIFIED	
THIS DOCUMENT IS IN ACCORDANCE WITH ASME Y14.5M-1994 AS MODIFIED BY THE 9M GLOBAL DIMENSIONING AND TOLERANCING ADDENDUM - 1997. ALL GEOMETRIC TOLERANCES AND RELATED DIMING APPLY PER RULE #1 EXCEPT FROM AT WHICH DOES NOT APPLY WHEN RELATIONSHIP BETWEEN FEATURES IS ESTABLISHED BY ORIENTED DIM OR LOCATION TOLERANCES. SEPARATE POSITION CALLOUTS MAY BE OMMITTED SEPARATELY. ALL DIMENSIONS ARE IN MILLIMETERS.	
REFERENCE	
THIRD ANGLE PROJECTION	
DO NOT SCALE	
USE MATH DATA	
NX	

• APTIV •						
CONNECTION SYSTEMS						
WARREN, OH						
COPYRIGHT 1989 APTIV, ALL RIGHTS RESERVED.						
THIS DRAWING IS THE PROPERTY OF APTIV AND CONTAINS APTIV CONFIDENTIAL INFORMATION. THE REPRODUCTION, DISTRIBUTION AND UTILIZATION OF THIS DOCUMENT OR ITS RELATED DATA, AS WELL AS COMMUNICATION OF ANY CONTENT TO OTHERS, WITHOUT EXPRESS AUTHORIZATION, IS PROHIBITED.						
DR	DATE					
APVD1 J. HOUGELMAN	13JAB9					
APVD2 T. MUDREY	26JAB9					
APVD3 A. HERMANN	31JAB9					
APVD4						
APVD5						
SUBSTANCES OF CONCERN AND RECYCLED CONTENT PER APTIV 10949001						
MATERIAL SPEC CHART						
DRAWING NAME						
TAXI SEAL CBL IW M/P						
DRAWING NUMBER						
12010295						
SIZE	SCALE	FRAME NO	SHEET NO	STG	REV	N/P
A0	10:1	1	OF 2	4	OF	R 29

Mouser Electronics

Authorized Distributor

Click to View Pricing, Inventory, Delivery & Lifecycle Information:

[Aptiv:](#)

[12129926](#)