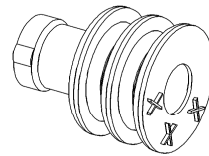
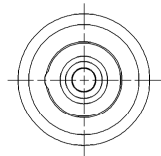
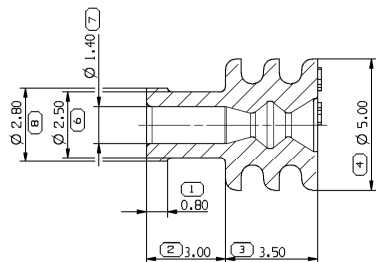


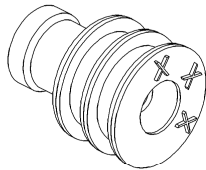
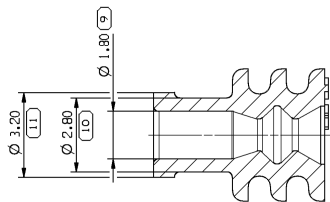
211 M 0007

SCALE 10:1



211 M 0008

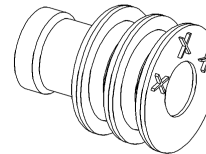
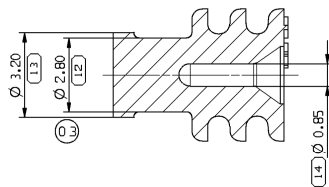
SCALE 10:1



AUTRES COTES IDEM 211 M 0007
OTHER DIMENSIONS AS 211 M 0007

211 M 0012

SCALE 10:1



AUTRES COTES IDEM 211 M 0007
OTHER DIMENSIONS AS 211 M 0007

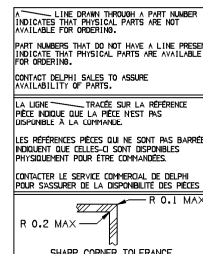
NOTA :
DIAMETRE ISOLANT: POUR INFORMATION,
VOIR TABLEAU Ø DES FILS QUALIFIES SUR LES PLANS DES CONTACTS.
NOTE:
WIRE DIAMETER: FOR INFORMATION
SEE TABLE ON TERMINAL DRAWINGS FOR VALIDATED WIRES

				SANCTION REQUIREMENT
EFFORT D'INSERTION DES BOUCHONS PLUGS INSERTION FORCE				<0U= 15 N
RESISTANCE MAXIMUM DES BOUCHONS A LA PRESSION PLUG MAXIMUM PRESSURE RESISTANCE				>0U= 0.30 BAR
CAHIER DE MISE EN ŒUVRE CONNECTIQUE DES BOUCHONS D'ALVEOLE USER'S MANUAL CAVITIES PLUGS				PU 106

MVL		DELPHI		COULEUR COLOR	TAUX D'HUILE RATE OF OIL	DURETE Shore A: TOUGHNESS Shore A:	PRESSION D'ETANCHEITE SEALING PRESSURE (BAR)	DIAMETRE ISOLANT WIRE DIAMETER (mm)		MASSE WEIGHT (g)
REF.PIECE PART NUM	INDICE REVISION	REF.PIECE PART NUM	INDICE REVISION					MIN	MAX	
211 M 0007	E	10736278	01	JAUNE YELLOW	2% ± 0.10%	54 ± 4	0.3	(1.25)	(1.90)	0.061
211 M 0008	E	10736279	01	VERT GREEN	2% ± 0.10%	54 ± 4	0.3	(1.75)	(3.00)	0.058
211 M 0012	F	10787316	01	BLANC WHITE	2%	51 ± 4	0.3	BOUCHON PLUG		0.075

DWG STATUS				ZONE	REVISION HISTORY		AUTH	DR	AP'D 1	AP'D 2
DATE	STG	REV	N/P		DATE	REV				
30JUL14	R	01	-	-	FILE TRANSLATED FROM MVL SYSTEM. SEE REV "X" FOR PREVIOUS CHANGE				DGL	DGL
30JUL14	R	02	-	-	FILE TRANSLATED FROM MVL SYSTEM. SEE REV "X" FOR PREVIOUS CHANGE				DGL	DGL
20AUG15	R	03	-	-	REPAIR IN MVL. DIMENSION 12 ADDED. STARLIN P/N COLUMN REMOVED			V.RAN	P.MEN	P.MEN

DWG TIP CUSTOMER PART DRAWING	
WEIGHT (LBI) SEE TABLE	DISTR CODE D
VOLUME (LBI) ROUTING	
UNLESS OTHERWISE SPECIFIED	
GENERAL TOLERANCES ACCORDING TO: ±0.1 ±0.2	
GD&T ACCORDING TO:	
REFERENCE MVL DWG 211FT0433	
FIRST ANGLE PROJECTION	
DO NOT SCALE	
USE MATH DATA	



DELPHI DELPHI PACKARD ELECTRICAL/ELECTRONIC ARCHITECTURE WARREN, OH COPYRIGHT 2013 DELPHI CORPORATION AND/OR ITS AFFILIATES. ALL RIGHTS RESERVED. THIS DRAWING IS THE PROPERTY OF DELPHI CORPORATION AND CONTAINS DELPHI CONFIDENTIAL INFORMATION. THE REPRODUCTION, DISTRIBUTION AND UTILIZATION OF THIS DOCUMENT OR ITS RELATED CAD DATA, AS WELL AS COMMUNICATION OF ANY CONTENT TO OTHERS, WITHOUT EXPRESS AUTHORIZATION, IS PROHIBITED. CE PLAN EST LE PROPRIETE DE DELPHI CORPORATION ET CONTIENT DES INFORMATION PROPRIETAIRES (CONFIDENTIAL) ET LA REPRODUCTION, LA DISTRIBUTION ET L'UTILISATION DE CE DOCUMENT OU DE SES DONNEES HYPERMEDIAS CAD, AINS QUE LA COMMUNICATION DE TOUT CONTENU A AUTRUI SANS AUTORISATION EXPRESSE EST INTERDITE.	
DR ISAMBERT	DATE 07MY02
AP'D1 F FAURIE	11MR13
AP'D2 S LACOTE	11MR13
AP'D3 PASCAL MENARD	14MR13
AP'D4	
AP'D5	
SUBSTANCES OF CONERN AND RECYCLED CONTENT PER DELPHI 10949001 MATERIALS PROPERTIES ET CONTENU RECYCLABLE SELON DELPHI 10949001	
DRAWING NAME SICMA 1.5 RANGE 1 & 2 SWS SINGLE WIRE SEAL & PLUG	
DRAWING NUMBER 10858315	
SIZE A1	SCALE 10:1
FRAME NO 1 OF 1	SHEET NO 1 OF 1
STG REV N/P	R 03 -

Mouser Electronics

Authorized Distributor

Click to View Pricing, Inventory, Delivery & Lifecycle Information:

[Aptiv:](#)
[10787316](#)