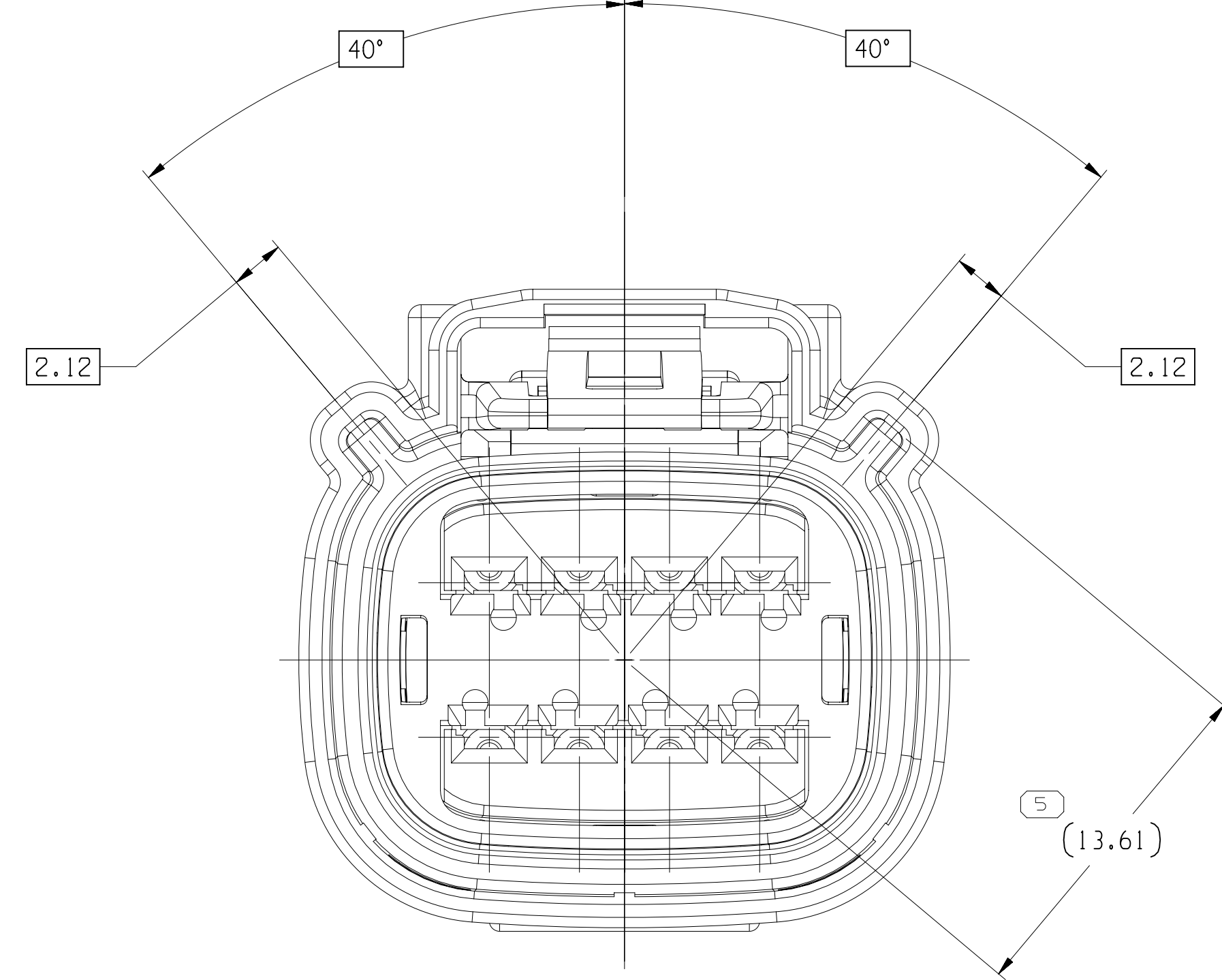
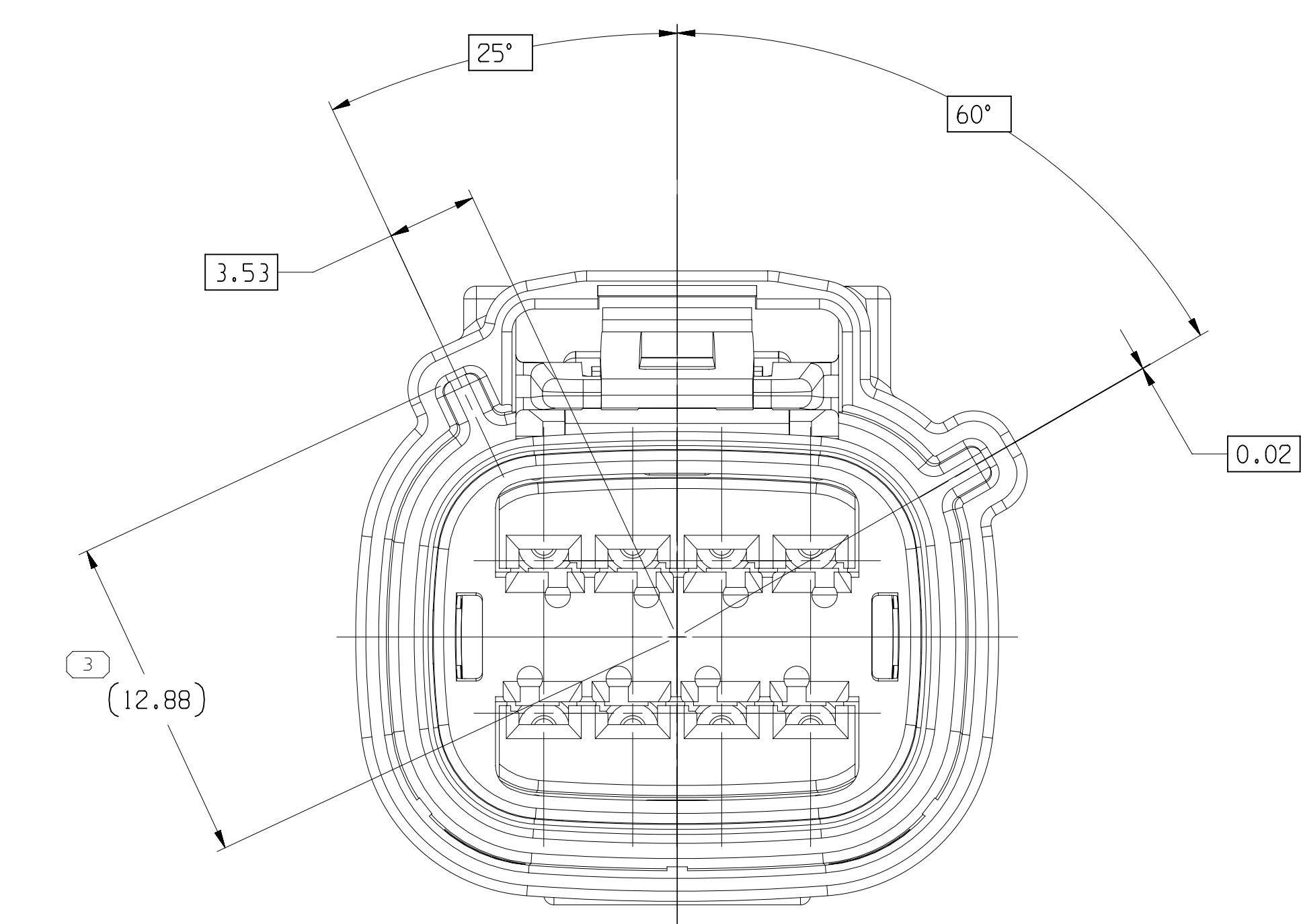
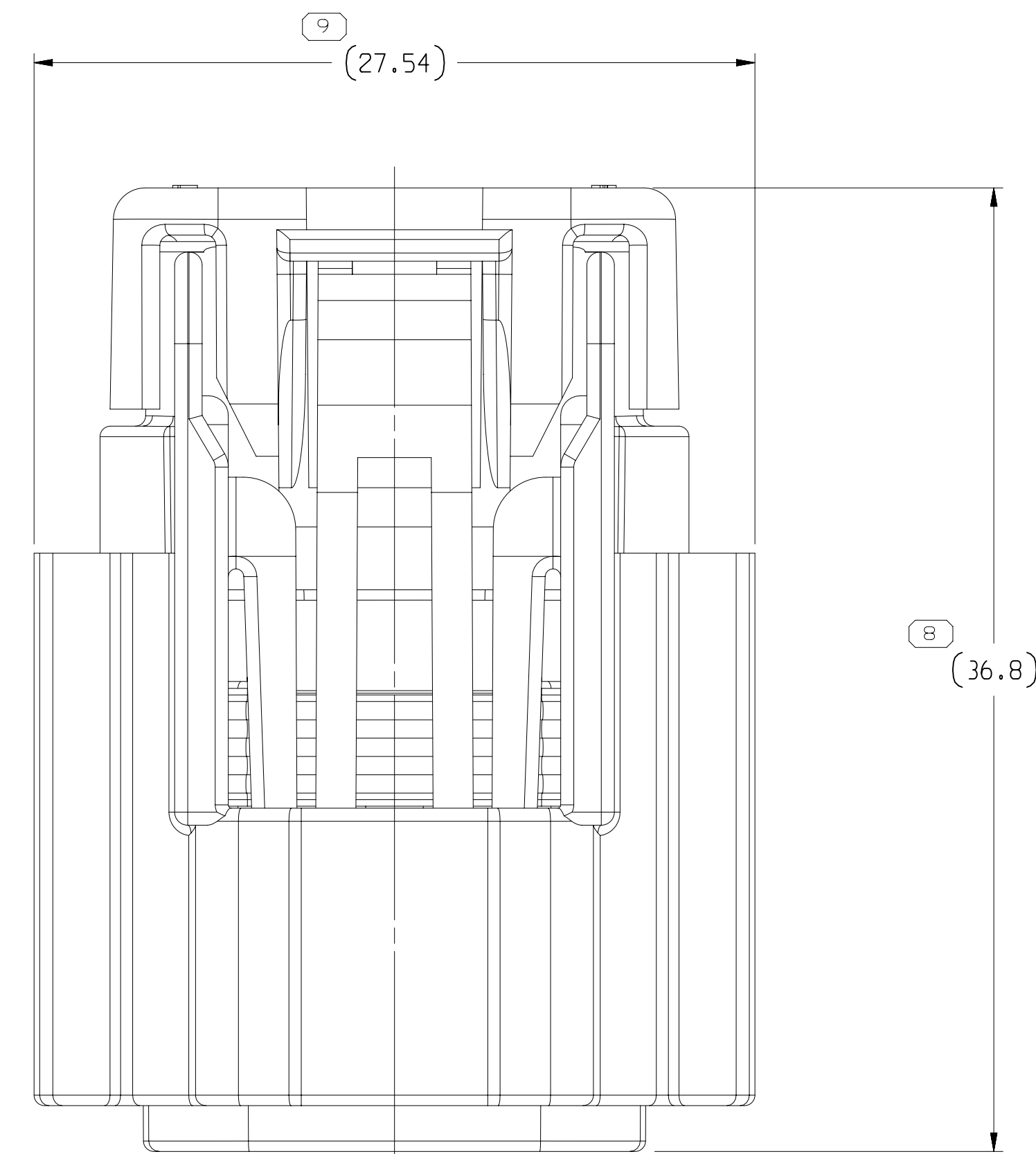


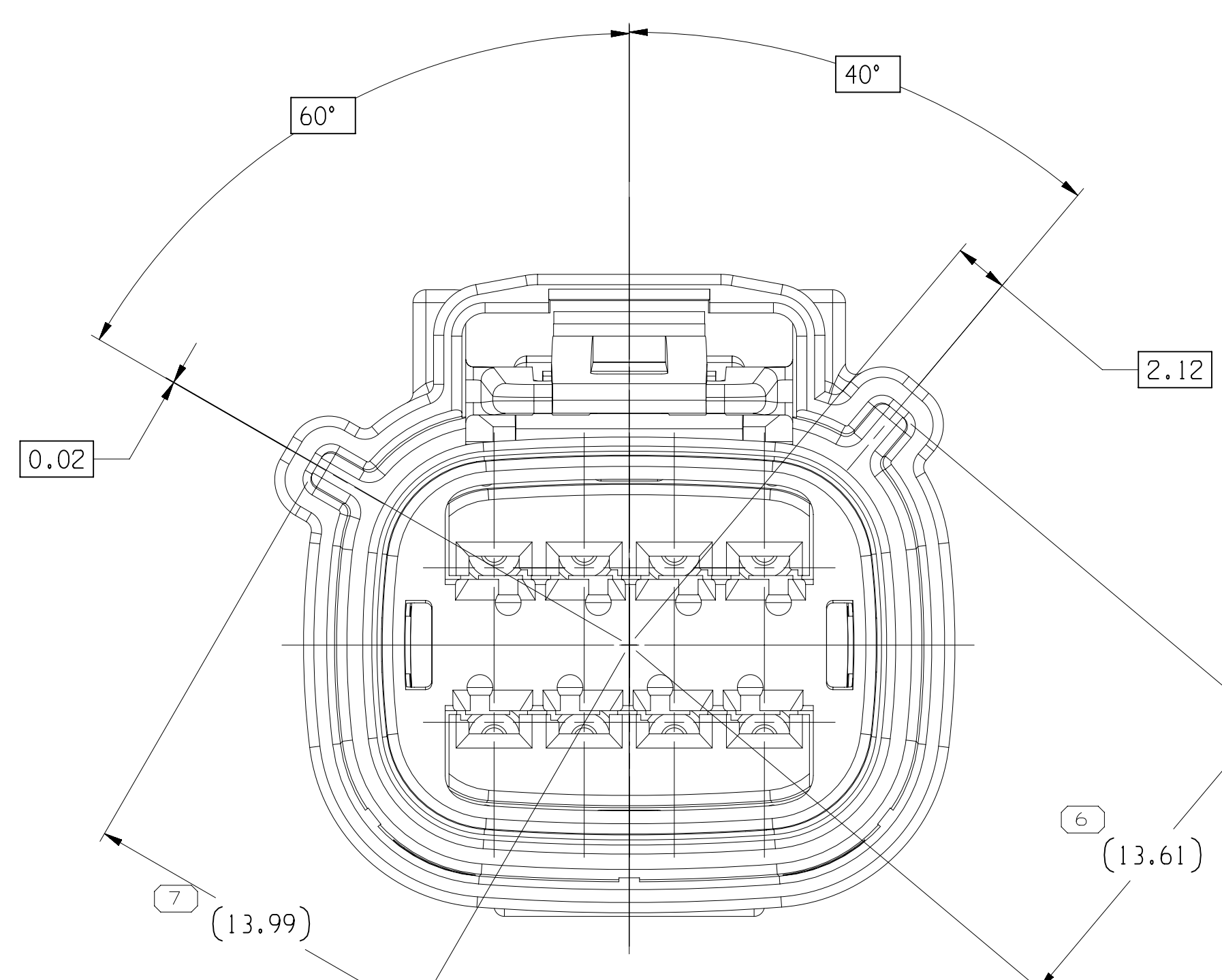
TYPE 102
SAME AS TYPE 101
EXCEPT AS SHOWN



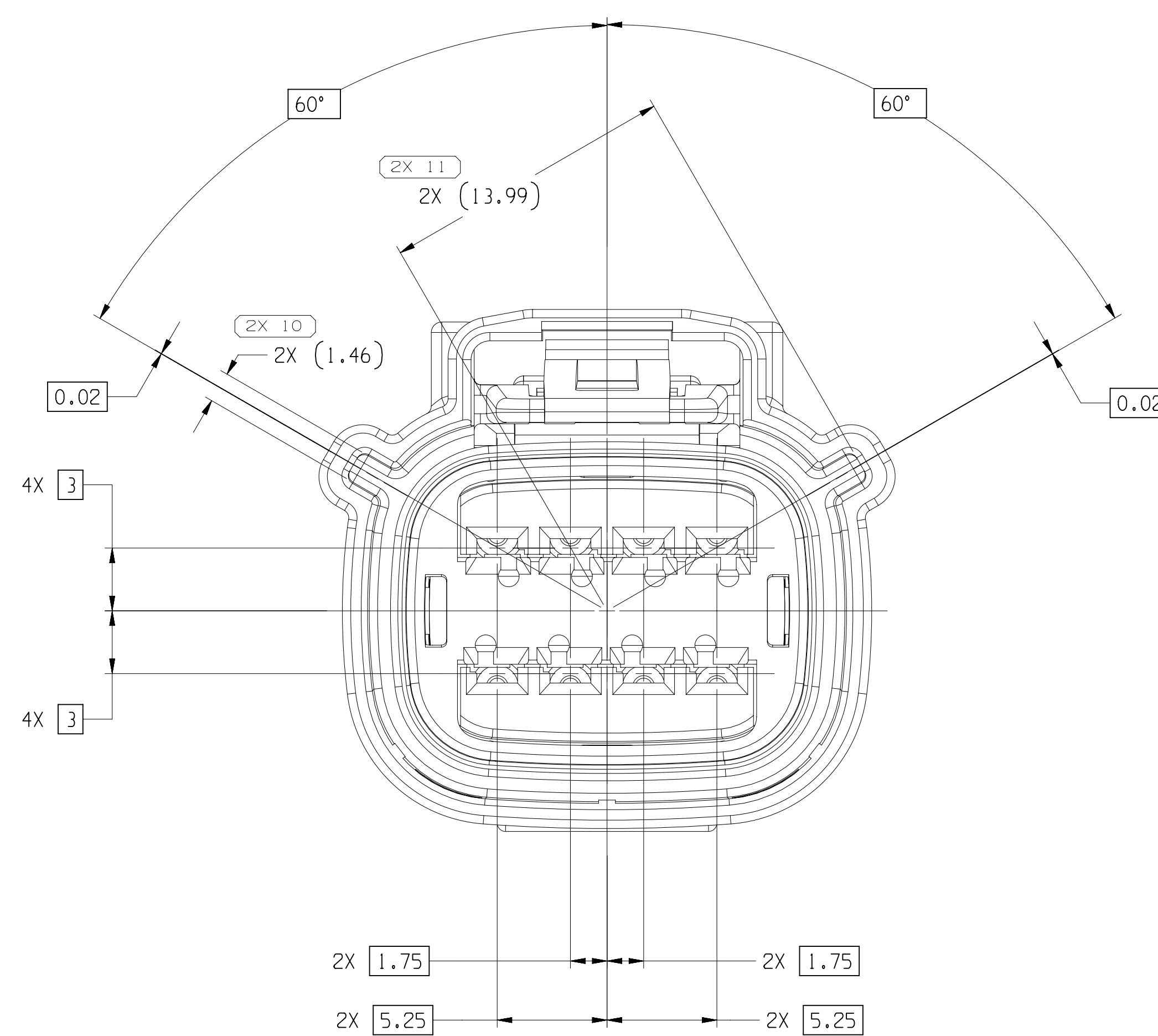
TYPE 105
SAME AS TYPE 101
EXCEPT AS SHOWN



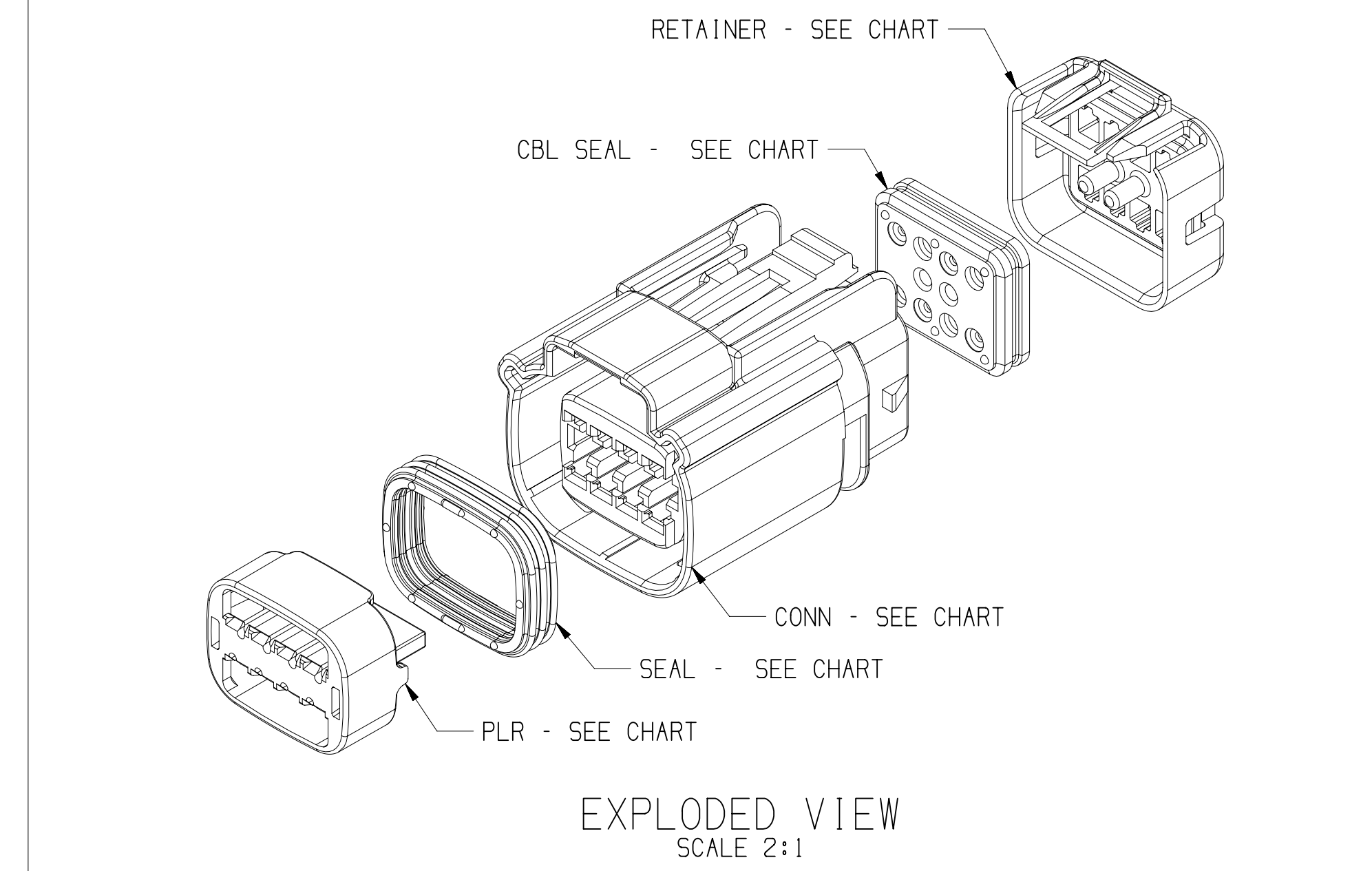
TYPE 103
SAME AS TYPE 101
EXCEPT AS SHOWN



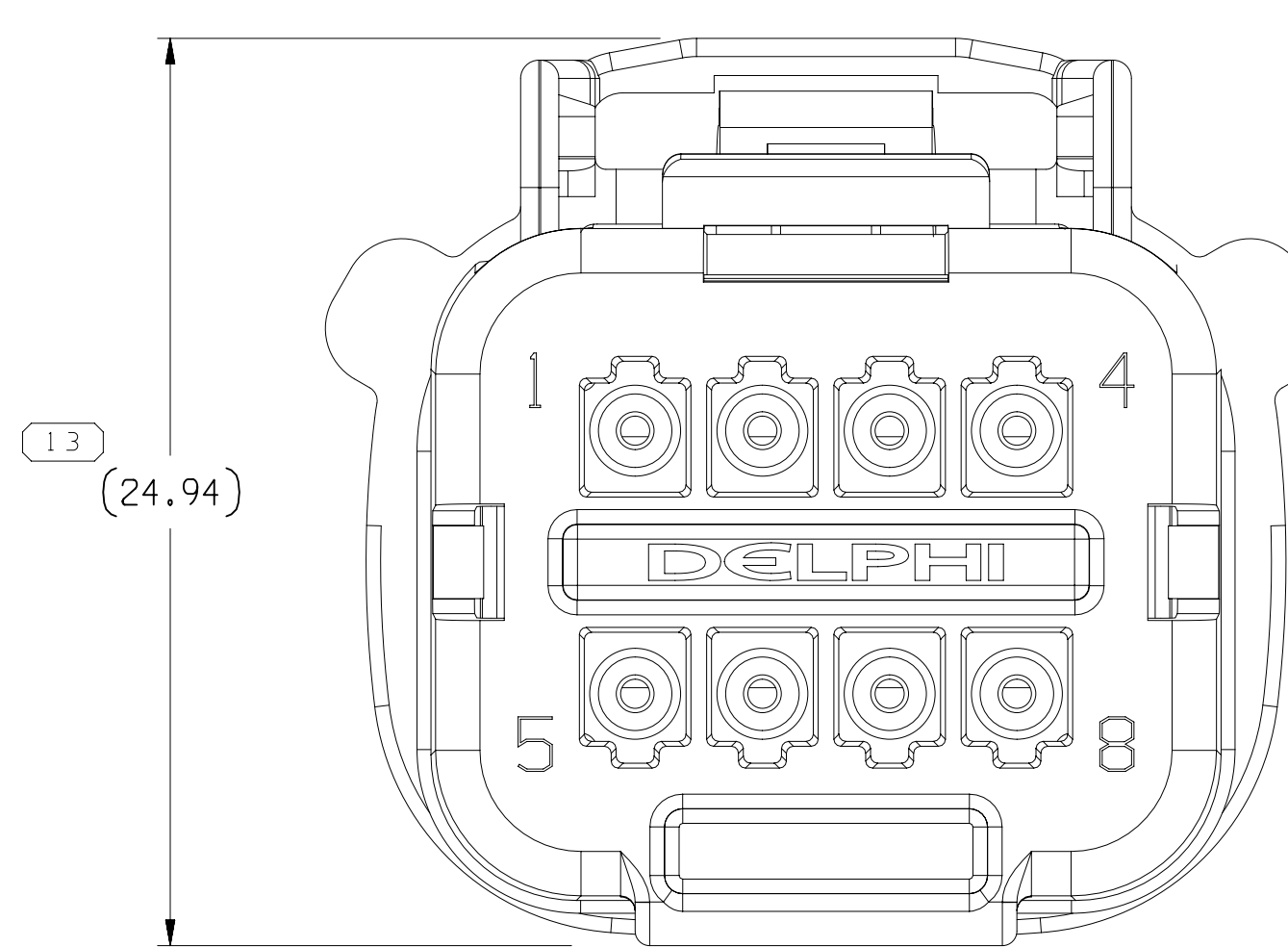
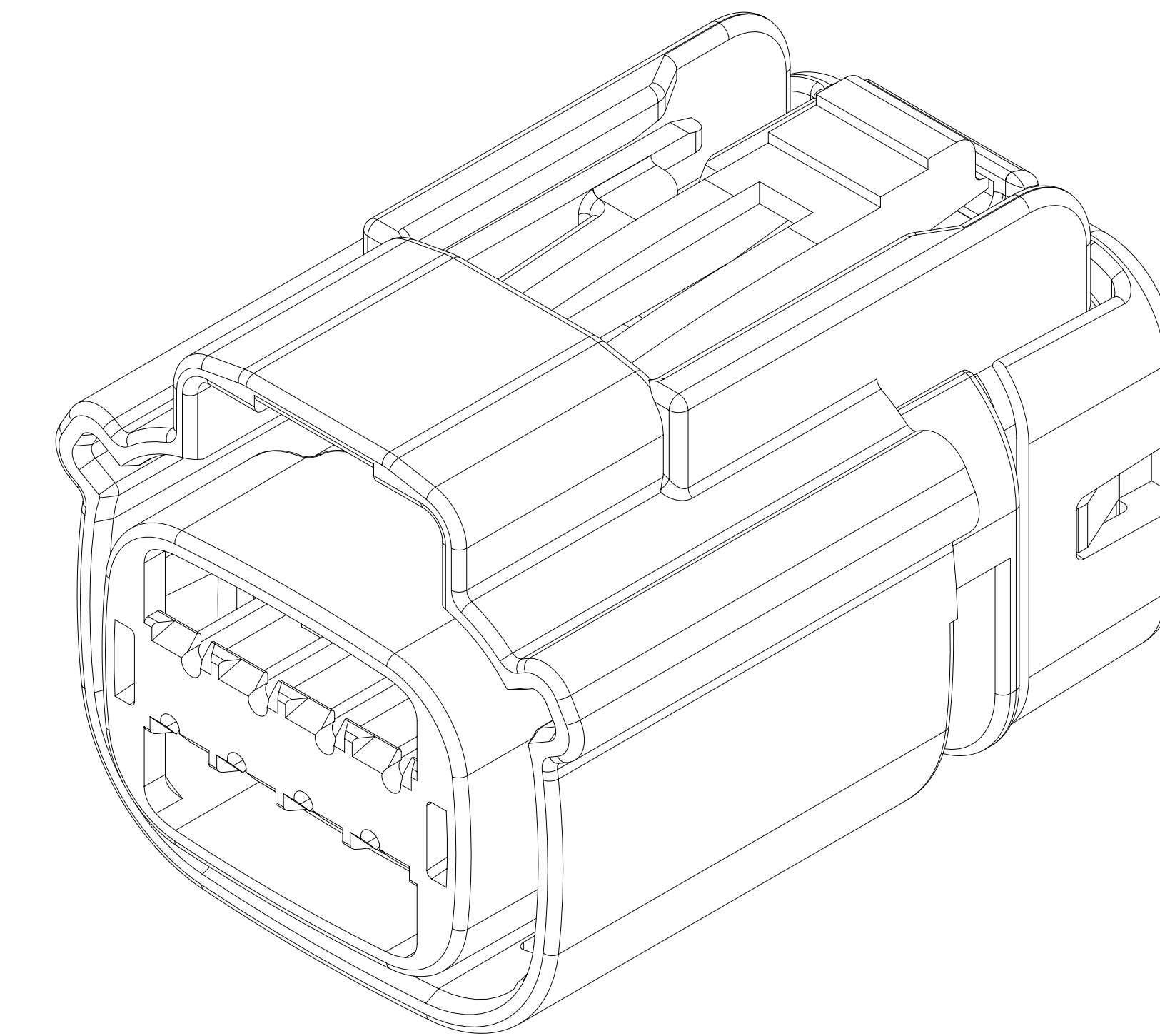
TYPE 106
SAME AS TYPE 101
EXCEPT AS SHOWN



TYPE 101

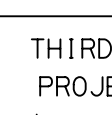


EXPLODED VIEW
SCALE 2:1



NOTES

1. UNLESS OTHERWISE SPECIFIED AND/OR INDICATED:
DIMENSIONS ARE TO FACE OF VIEW SHOWN AND
AUTOMATICALLY ROUNDED BY COMPUTER FOR INSPECTION
[SEE MATH MODEL FOR PRECISE DIMENSIONS], FOR ALL
OTHER DIMENSIONS NOT SHOWN BUT REQUIRED FOR TOOL
BUILD, SEE MATH MODEL FOR PRECISE TOOL PATH DATA.
2. PART IS MANUFACTURED TO GEOMETRIC TOLERANCES. CENTERLINE
DIMENSIONS ARE FOR REFERENCE ONLY.
3. SEALING CODE 4 - DESIGN WILL MEET REQUIREMENTS OF SAE/JSCAR-2
CONNECTOR SYSTEM FOR ENVIRONMENTAL TEST FLUORICART
(PRESSURE/VACUUM AND SUBMERSION).
4. THIS PRODUCT IS NOT CATEGORIZED AS AN APPEARANCE ITEM. MINOR
IMPERFECTIONS INCLUDING, BUT NOT LIMITED TO, FLOW MARKS, COLOR
BLEMISHES, GATE VESTIGE, AND SOFT FLASH THAT DO NOT AFFECT THE
FIT, FORM, OR FUNCTION OF THE PART ARE PERMISSIBLE PER EIA/J-3C.01-EN.
5. FOR APPLICATION DATA SEE THE INDIVIDUAL APPLICATION DRAWINGS.
6. ASSEMBLY TO BE USED WITH APPROPRIATE ACTIV HOLDER DESIGN.
7. ASSEMBLY TO BE PROCESSED USING ACTIV CONNECTION SYSTEMS BEST
PRACTICE METHODS AND/OR CONNECTOR ASSEMBLY INSTRUCTIONS AND APPLICABLE
REPAIR PROCEDURES.
8. BEFORE TERMINAL ASSEMBLY VERIFY THAT PLR IS IN THE PRE-SERVE POSITION
ON THE CONNECTOR. IF NOT, RETURN PLR TO PRE-SERVE POSITION.
9. FOR DIFFERENT PUNCH PATTERN CONFIGURATIONS (IF AVAILABLE) SEE SHEET 2
10. FOR ASSEMBLIES WITH CPA SEE DRAWING 15514673

THE DATE AFTER WHICH THIS NUMBER INDICATES THAT PHYSICAL PARTS ARE NOT AVAILABLE FOR ORDERING.	
THAT NUMBERS THAT DO NOT HAVE A LINE NUMBER INDICATE THAT PHYSICAL PARTS ARE AVAILABLE FOR ORDERING.	
CONTACT AVIS SALES TO ASSESS AVAILABILITY OF PARTS.	
BUY TYPE	PART DRAWING
STYLE	
VOLUME (SHEET)	OTHER CODE <div style="font-size: 2em; text-align: center; margin-top: 10px;">D</div>
UNLESS OTHERWISE SPECIFIED THIS DOCUMENT IS IN ACCORDANCE WITH ASME Y14.4-1994 AS AMENDED BY THE USE OF DIMENSIONAL CHANGES TO DIMENSIONS AND FEATURES. SEPARATE PRACTICES OF DIMENSIONS ARE SHOWN INDEPENDENTLY REGARDLESS OF DATUM ORIENTATIONS.	
ALL DIMENSIONS ARE IN MILLIMETERS	
REFERENCE	
PROCESS SENSITIVE DIMENSION	
DIMENSIONS INDICATED IN () INDICATE THAT PROCESS DIMENSIONS AND TOLERANCES ARE ESTABLISHED	
COORD. SET 70 > 100 > 150 > 200 > 250 > 300 > 400 100 < 150 < 200 < 250 < 300 < 400 DIMENSIONS SPECIFIED IN () ARE IN MILLIMETERS 1 1/4 1 1/2 1 3/4 1 7/8 2 1/8 2 1/4 2 3/8 2 7/8	THIRD ANGLE PROJECTION <div style="text-align: center; margin-top: 10px;">  </div>
DO NOT SCALE USE MATH DATA <div style="text-align: right; font-weight: bold; font-size: 1.2em;"> NOT ALLOWED </div>	

<div style="text-align: center;"> <h1>• A P T I V •</h1> <h2>CONNECTION SYSTEMS</h2> <p>WARREN, OH</p> <p>COPYRIGHT 2013 APTI, ALL RIGHTS RESERVED.</p> <p>THIS DRAWING IS THE PROPERTY OF APTI AND CONTAINS APTI INFORMATION. IT IS TO BE USED FOR THE DESIGN, CONSTRUCTION, AND UTILIZATION OF THIS DOCUMENT OR ITS RELATED DATA ONLY. IT WILL NOT BE COMMERCE OF OR FOR ANY OTHER USE, UNLESS SO EXPRESSLY AUTHORIZED. IT IS PROHIBITED.</p> </div>				
DR			DATE	
APPROV	OWAR ROJAS A.	14MY 13		
APPROV	EDUARDO SENA	14MY 13		
APPROV	ALICIA GUERRERO	14MY 13		
APPROV				
SUBSTANCES OF CONCERN AND RECYCLED CONTENT PER ART 17.1 (2004/90)				
MATERIAL SEE CHART				
DRAWING TITLE <div style="text-align: center;"> <h1>TAXI ASM CONN 8 F DCS 1.5 L5D</h1> </div>				
DRAWING TRAILER <div style="text-align: center;"> <h1>15532402</h1> </div>				
SIDE	SCALE	FRAME	SHEET NO.	TOTAL SHEETS
A1x3	5:1	1 OF 2	1 OF 2	8 OF 8

15532410	Q2	AC	106	15514665	15514685	15514684	15514683	15514678	F
15532409	Q2	AC	105	15514664	15514685	15514684	15514683	15514678	E
15532408	Q2	AC	104	15514663	15514685	15514684	15514683	15514678	D
15532407	Q2	AC	103	15514662	15514685	15514684	15514683	15514678	C
15532406	Q2	AC	102	15514661	15514685	15514684	15514683	15514678	B
15532405	Q2	AC	101	15514659	15514685	15514684	15514683	15514678	A
PART NO	REV	N/P	TYPE	CONNECTOR	PLR	SEAL_CONN	SEAL_CBL	RETAINER	USCAR OPTION

DIMENSIONAL RANGE (MM)										CHART	
FROM	> 0	> 20	> 30	> 70	> 100	> 150	> 200	> 250	> 300		
TO	20	30	70	100	150	200	250	300	400		
TOLERANCE UNLESS OTHERWISE SPECIFIED											
	+0.15	+0.2	+0.3	+0.4	+0.5	+0.6	+0.8	+1	+1.6		
ANGULAR TOLERANCE ±2°											

Mouser Electronics

Authorized Distributor

Click to View Pricing, Inventory, Delivery & Lifecycle Information:

[Aptiv:](#)
[15532405](#)