

DWG STATUS				ZONE	REVISION HISTORY		AUTH	DR	CK	AP/D
DATE	STG	REV	N/P							
25MR03	R	01	--		RELEASED		238454	EVH	AFM	VC

DATEUR EN CREUX  
SUR AUTRE FACE  
DU PORTE-CLIP  
RECESSED DATE  
ON CONNECTOR  
OPPOSITE SIDE

XX = année  
year

Ø 6

MARQUAGE MATIERE  
MATERIAL IDENTIFICATION

REPERE EMPREINTE  
CAVITY NUMBER

INDICE PIECE SUR PAVE AMOVIBLE  
REVISION LEVEL ON REMOVABLE PIECE

J-J  
Echelle : 5  
SCALE : 5

DETAIL C  
C DETAIL  
Echelle : 5  
SCALE : 5

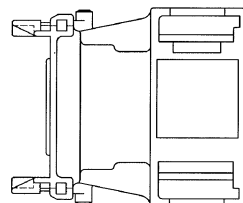
MARQUAGE SIGLE  
ACRONYM MARKING

REPERAGE VOIES  
CONTACT CAVITY NUMBER

H-H

B-B

REPERE index	DESIGNATION designation	QUANTITE quantity	MATIERE material	COULEUR colour
1	PORTE-CLIPS harness connector	1	PBT 15XFV PBT 15XGF	VOIR TABLEAU see table
2	JOINT INTERFACIAL interface seal	2	SILICONE silicone	VERT green
3	GRILLE spacer	2	PBT 15XFV PBT 15XGF	JAUNE yellow
4	GROMMET grommet	2	SILICONE silicone	ROUGE red
5	PLAQUETTE plate	1	PBT 15XFV PBT 15XGF	NOIR black



REPERAGE VOIES  
CONTACT CAVITY NUMBER

H

136.20±0.30

36.65<sup>+0.30</sup><sub>-0.20</sub>  
Pincement maxi admis: 1.2  
Maxi permissible pinching: 1.2

NOTA: -1- PRODUIT IDENTIQUE A REF. : 211 PC 90 2 S x 008  
SAUF MARQUAGE  
product identical to ref: 211 A 90 2 S x 008  
excepted marking

-2- côte M.S.P.  
S.P.C. dimension

-3- ALVEOLE POUR CONTACT CLIP: SICMA 2  
cavity for female terminal contact: sicma 2

ARCHIVE LE 26/12/00			
1. AOUT PINCEMENT PROU ADMIS: 1.2 SUR 36.65 ± 0.30 - 0.20 - DP 25/44 (03/10/00)	NAMELI	26/12/2000	A 00 643
MODIFICATION	NET	DATE	N° Bureau
DESSINE: LE: 26/05/97	VERIFIE: LE: 13/12/00	MATIERE: VOIR TABLEAU	TOLERANCE GENERALE
PAR: F. MENEZ	POIDS:	ETAT: --	10.20 ± 1*
TRAITEMENT:	SURFACE:	REQUISITE:	ECHELLE: 2 / 1
Ce document est la propriété de FRAMATONE CONNECTORS CONNECTRAL. Il ne peut être reproduit ou communiqué sans autorisation.			
FRAMATONE CONNECTORS CONNECTRAL Rue des Quatre Filles - DP 25 28231 EPERNON cedex FRANCE			
PORTE-CLIPS 90 VOIES 1.5 x 0.8 ETANCHE VERSION ANONYME - FICHE TECHNIQUE 90 WAYS 1.5 x 0.8 SEALED CONNECTOR ANONYMOUS VERSION - TECHNICAL SHEET			
A1	211 FT 0280		

#### NOTES

- REF FCI P/N 211PC902S0009
- DELPHI PACKARD ELECTRIC SYSTEMS IS NOT RESPONSIBLE FOR DESIGN CONTROL OF PURCHASED "OFF SHELF" COMPONENTS.

PART DRAWING	
STYLE	N/A
VOLUME (CH)	DISTR CODE
N/A	D
ROUTING	6901
REFERENCE	
DO NOT SCALE	
CAD	SE
BOUND	BOUND

DELPHI	
DELPHI PACKARD ELECTRIC SYSTEMS WARREN, OH	
DATE	
DR	
APR01: Vazquez, Eduardo	25MR03
APR02: Flores, Adrian	26MR03
APR03: Cabral, Veronica	27MR03
APR04:	
SUBSTANCES OF CONCERN AND RECYCLED CONTENT PER DELPHI - A 10349001	
MATERIAL	
N/A	
DRAWING NAME	
CONN	
DRAWING NUMBER	
10776517	
SIZE	SCALE
A0	NONE
FRAME NO	SHEET NO
1 OF 1	1 OF 1
SYG	REV
R	01
N/P	--

# Mouser Electronics

Authorized Distributor

Click to View Pricing, Inventory, Delivery & Lifecycle Information:

[Aptiv:](#)  
[10776517](#)