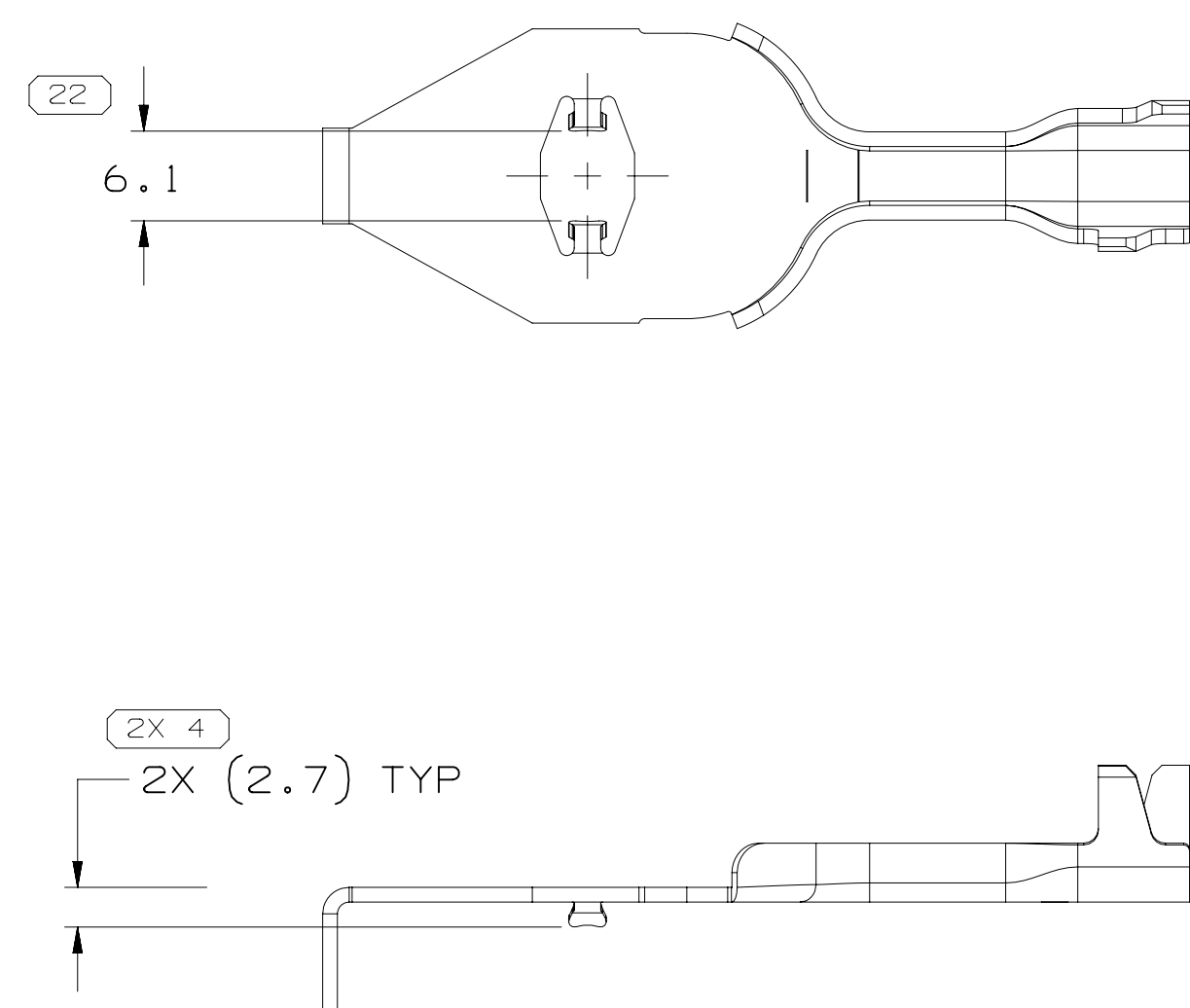
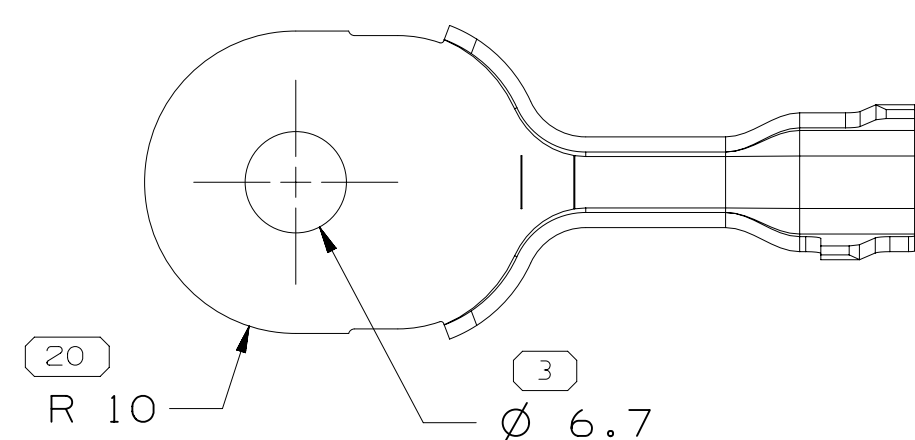


TYPE 102
SAME AS TYPE 101
EXCEPT AS SHOWN

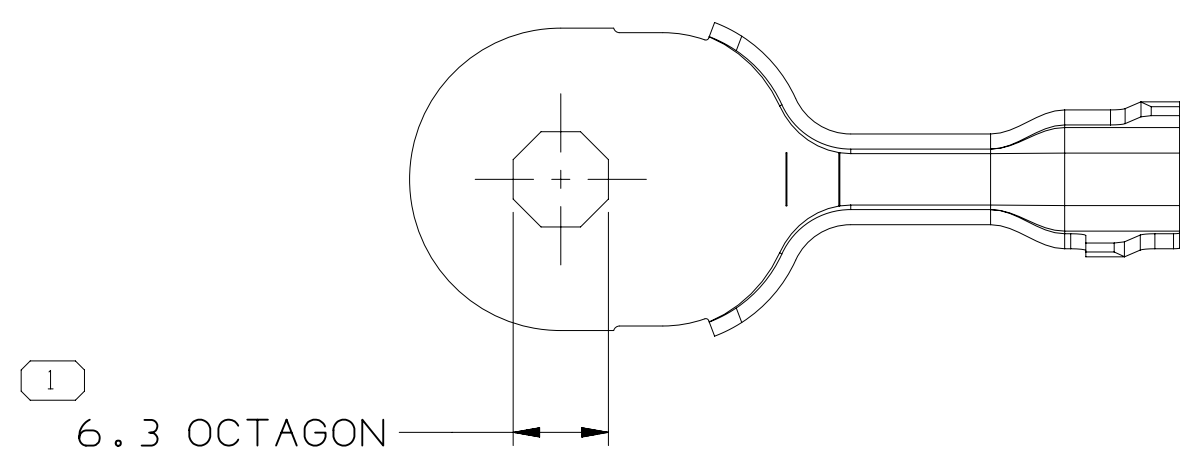
TYPE 107
SAME AS TYPE 106
EXCEPT AS SHOWN



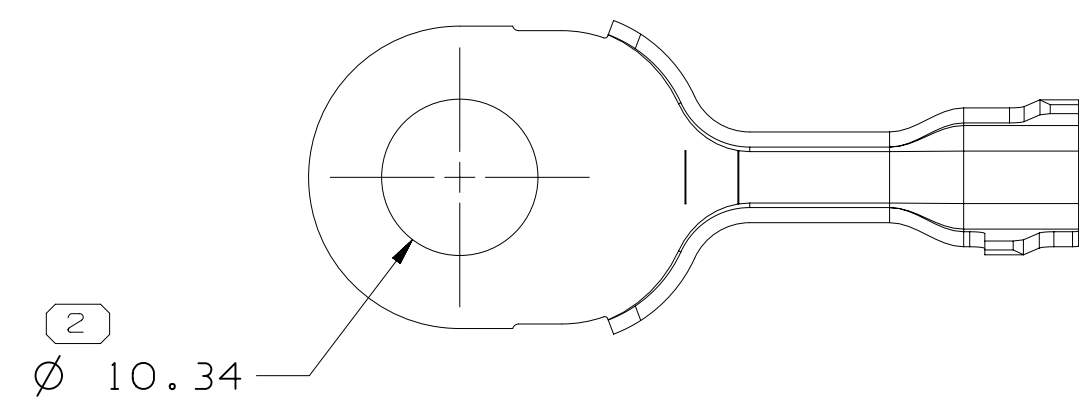
TYPE 103
SAME AS TYPE 101
EXCEPT AS SHOWN



TYPE 104
SAME AS TYPE 101
EXCEPT AS SHOWN



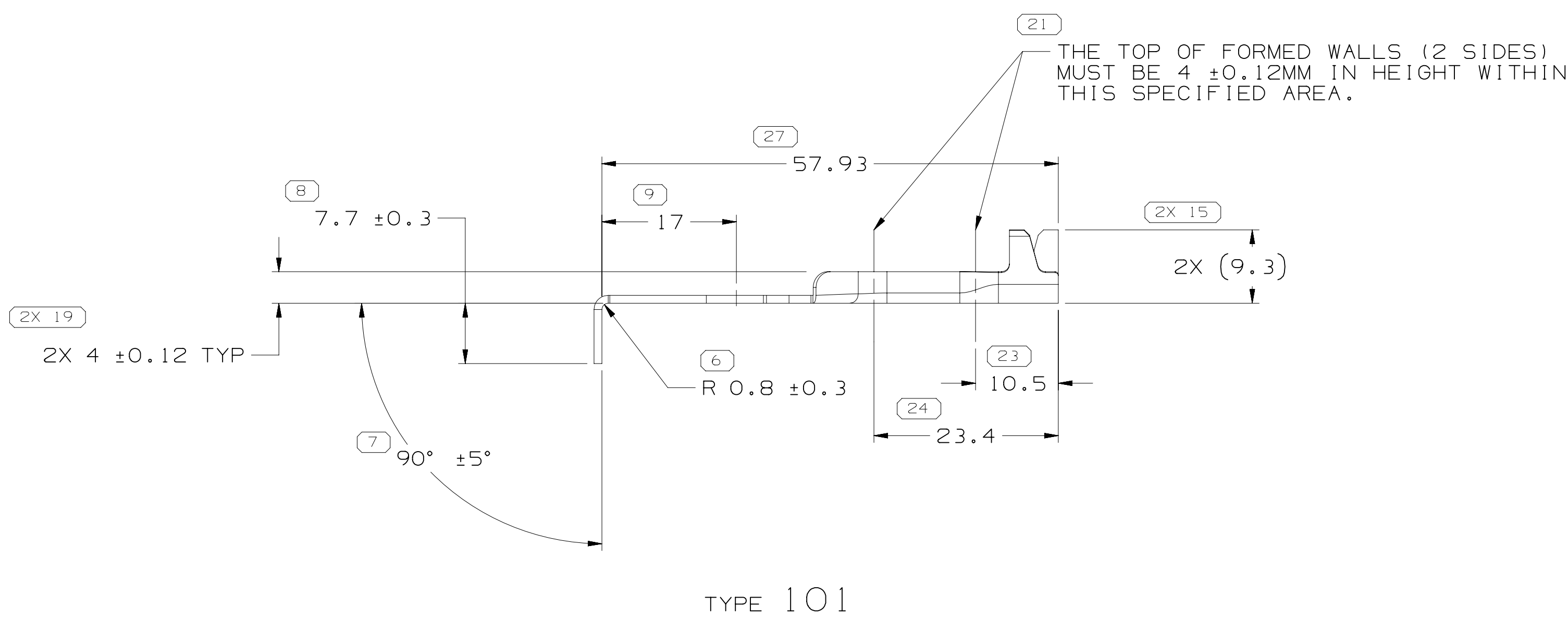
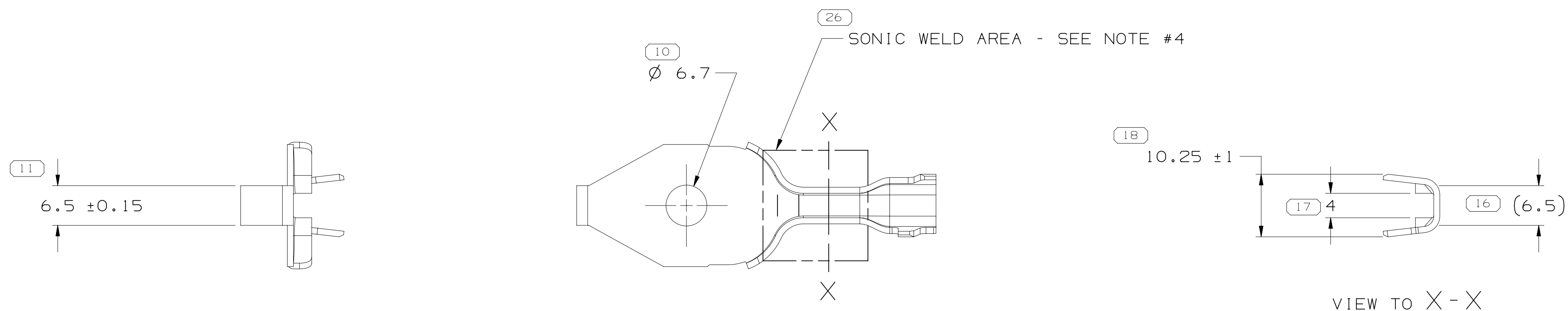
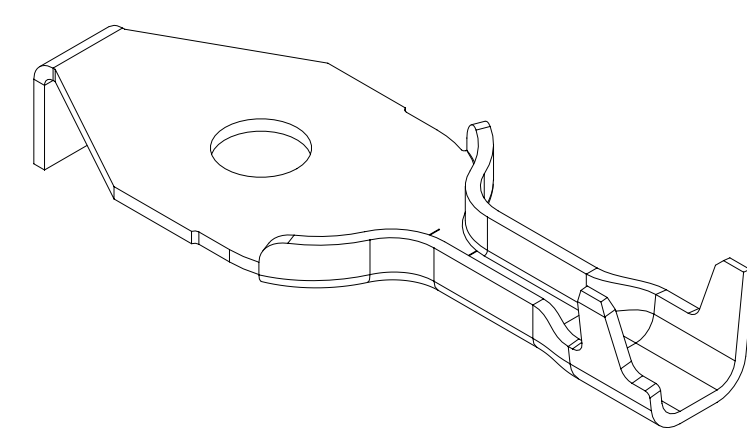
TYPE 105
SAME AS TYPE 104
EXCEPT AS SHOWN



TYPE 106
SAME AS TYPE 104
EXCEPT AS SHOWN

33270287	01	AA	1.0 X 55	COPPER ALLOY	105	YES	2.5-6.5	1-8	SEE NOTE 6	1	
13918209	01	AD	1.0 X 55	COPPER ALLOY	107	NO	2.5-6.5	1-8	-	-	
15485964	02	AL	1.0 X 55	COPPER ALLOY	106	NO	2.5-6.5	1-8	-	-	
15485962	02	AL	1.0 X 55	COPPER ALLOY	105	YES	2.5-6.5	1-8	-	1	
15485960	02	AL	1.0 X 55	COPPER ALLOY	104	NO	2.5-6.5	1-8	-	-	
15476583	03	AJ	1.0 X 70	COPPER ALLOY	103	YES	2.5-6.5	1-8	-	-	
15482714	03	AJ	1.0 X 70	COPPER ALLOY	102	YES	2.5-6.5	1-8	-	1	
15482716	03	AJ	1.0 X 70	COPPER ALLOY	101	YES	2.5-6.5	1-8	-	-	
PART	NO	REV	N/P	MAT'L SIZE	MATERIAL SPECIFICATION	TYPE	ANTI-ROTATION	BUNDLE SIZE MM²	NO. OF WIRES MIN-MAX	RESTRICTED USAGE	PROCESS NOTE

SYMBOL DEFINITION			
A DIMENSION WITHOUT AN INSPECTION REPORT SYMBOL () DOES NOT REQUIRE INSPECTION. IT MAY BE CONTROLLED ON THE INDIVIDUAL COMPONENT DRAWING.	TOTAL NO OF INSPECTIONS REQUIRED	27	
	LAST NO. USED	27	



NOTES

1. UNLESS OTHERWISE SPECIFIED AND/OR INDICATED:


DIMENSIONS ARE TO FACE OF VIEW SHOWN AND AUTOMATICALLY ROUNDED BY COMPUTER FOR INSPECTION (SEE MATH MODEL FOR PRECISE DIMENSIONS). FOR ALL OTHER DIMENSIONS NOT SHOWN BUT REQUIRED FOR TOOL BUILD, SEE MATH MODEL FOR PRECISE TOOL PATH DATA.
2. TERMINAL MUST BE MADE USING FIN-LUBE 0177 STAMPING LUBE OIL. ANY OTHER LUBRICANT MUST BE APPROVED BY PRODUCT ENGINEERING.
3. TERMINALS ARE TO BE SINGULATED FROM CARRIER AND PLACED IN CLEAN CLOSED PLASTIC BAG PRIOR TO STORAGE AND SHIPMENT.
4. SONIC WELD AREA AS DEFINED ON DRAWING MUST BE KEPT FREE OF TIN PLATING OR OTHER COATING/PLATING.
5. PARTS MUST BE KEPT THE SONIC WELDING AREA DRY PRIOR TO THE WELDING PROCESS.
6. PARTS RESTRICTED FOR USE IN LEAR ONLY.
REFER TO CHART FOR SPECIFIC RESTRICTED PART NUMBERS.

PROCESS NOTE

1. PARTS SHALL BE FREE OF DEBRIS; RESIDUAL ABRASIVE MATERIALS; CORROSION PRODUCTS; OIL/LUBRICANT AND ANY EXTERNAL RESIDUE.

18		PROCESS SENSITIVE DIMENSION	
DIMENSIONS ENCLOSED IN () INDICATE REFERENCE DIMENSIONS AND NO TOLERANCE LIMITS ARE ESTABLISHED			
DIMENSIONAL RANGE (MM)		CHART D	
FROM	0		
TO	12	>12	
TOLERANCE UNLESS OTHERWISE SPECIFIED			
	±0.1	±0.2	
ANGULAR TOLERANCE ±2°			

DATE	DWG STATUS				ZONE	REVISION HISTORY	AUTH	DR	APV01	APV03
	DATE	STG	REV	N/P						
01DEC93	R	01	-	-		SHEET 1 PART DRAWING CREATED AND RELEASED	248906	JEB	JEB	RAP
13JAO04	R	02	-	-		15482716-RELEASED; 15482714-RELEASED; 15485960-RELEASED; 15485962-RELEASED; 15485964-RELEASED; ALL PARTS-REVISED NOTE 2; ALL PARTS-DIM 9 WAS 16 80.3; DIM (25) WAS 25 80.15	253040	ADK	END	M
16MR04	R	03	-	-		ALL PARTS - ADDED NOTE & DIMS 3 PLCS; 2X (19,3) WAS 2X (8.15), 2X (4) TYP WAS 2X 4 TYP & 2X (12.7) TYP WAS 2X 2.1 TYP; REVISED NOTE #2; MATL SPEC WAS M5302XX - C102	252912	MAC	MAC	RAP
07AP04	R	04	-	-		ALL PARTS - 10.25 +/-1 WAS 10.25 AND (6.5) WAS 6.5	253575	EES	EES	RAP
26MY04	R	05	-	-		ALL PARTS - ADDED "NO. OF WIRES" COLUMN TO CHART & ADDED BUNDLE SIZES 154765B3, 15482714, 15482716 - REVISED MATERIAL SPECS	255191	EES	EES	RAP
29JN04	R	06	-	-		154765B3, 15482714, 15482716 - 17 WAS 12; 7.7 80.3 WAS 12.7 80.3	256415	ADK	ADK	RAP
08JUL09	R	07	-	-		UPDATED PDM ATTRIBUTES	408338	RGC	MMC	RGC
24MR10	R	08	-	-		ALL PARTS - 4 +/-0.12MM WAS 4 +/-0.08MM	410395	JAR	JAR	RGD
08AP10	R	09	-	-		ALL PARTS - SH 1 OF 4 WAS SH 1 OF 2	410278	ARC	ARC	DGR
15MY10	R	10	-	-		SHT 1 OF 6 WAS SHT 1 OF 4 ; ALL PARTS - ADDED "RESTRICTED USAGE" & "REPLACED BY" COLUMNS	410844	MAL	MAL	RAP
25FEL11	R	11	-	-		ALL PARTS - UPDATED PDM ATTRIBUTES	413473	AHY	JVM	RGD
17OC11	R	12	-	-		ALL PARTS - REMOVED "RESTRICTED USAGE" AND "REPLACED BY" FROM CHART	415770	AHY	JVM	LRS
25NO11	R	13	-	-		13918209 - RELEASED	416217	CBG	CBG	ACT
16DE11	R	14	-	-		ALL PARTS - RELOCATED SYMBOL CHART	416497	CBG	CBG	ACT
29AU12	R	15	-	-		15485962 - CORRECTED ANTI-ROTATION COLUMN TO "NO" INSTEAD OF "YES"	419450	LRS	RGC	LRS
05AU15	R	16	-	-		ALL PARTS - ADDED PROCESS NOTES 4 & 6 AND SONIC WELD AREA LABEL; 33270287 - RELEASED AND ADDED NOTE OF CLEANNES	430391	NRM	JVM	ERG
07SE15	R	17	-	-		ALL PARTS - REVISED SHALL BE FREE OF DEBRIS NOTE; 33270287 - ADDED RESTRICTED USAGE COLUMN	430477	ABH	JVM	ERG
07OC15	R	18	-	-		13918209, 15485964, 15485960, 15482714, 15482716 - PROCEDURE NOTE NON APPLICABLE; 154765B3 - OBSOLETE	430973	ERG	VMR	ERG
22NO17	R	19	-	-		SHT 1 OF 12 WAS SHT 1 OF 7	438258	ASL	JVM	LRS
25OC18	R	20	-	-		"SHT 1 OF 14" WAS "SHT 1 OF 12"	441115	AHG	AHG	LB

<p>1. LINE DRAWING THROUGH A PART NUMBER 2. PART NUMBER. PHYSICAL PARTS ARE NOT AVAILABLE FOR ORDERING.</p> <p>CONTACT PARTS THAT DO NOT HAVE A LINE DRAWING INDICATE THAT PHYSICAL PARTS ARE AVAILABLE FOR ORDERING.</p> <p>CONTACT ACTIVE SALES TO ASSURE AVAILABILITY OF PARTS.</p> <p>PMI TYPE</p> <p>PART DRAWING</p> <p>STYLE</p> <p>VOLUME (CM³)</p> <p>DISTR CODE</p> <p>D</p> <p>UNLESS OTHERWISE SPECIFIED</p> <p>THIS DOCUMENT IS IN ACCORDANCE WITH ASME Y14.5-1994 FOR DIMENSIONING AND TOLERANCING PRACTICES AND TOLERANCING DATABOOK - 1997. ALL GEOMETRIC TOLERANCES ARE LOCATED UNDER THE SURFACE FINISH SYMBOL. ALL DIMENSIONS ARE UNLESS NOTED OTHERWISE. DIMENSIONS IN PARENTHESES ARE FOR INFORMATION ONLY. DIMENSIONS IN PARENTHESES SEPARATE POSITION CALCULATIONS MAY BE OBTAINED SEPARATELY. DIMENSIONS OF DATA INFORMATION.</p> <p>ALL DIMENSIONS ARE IN MILLIMETERS</p> <p>REFERENCE</p> <p>THIRD ANGLE PROJECTION</p> <p>DO NOT SCALE</p> <p>USE MATH DATA</p> <p> NX</p>	
---	--

• APTIV •

CONNECTION SYSTEMS

WARRREN, OH

COPYRIGHT 2013 APTIV. ALL RIGHTS RESERVED.

THIS DRAWING IS THE PROPERTY OF APTIV AND CONTAINS APTIV
CONFIDENTIAL INFORMATION FOR THE CONSTRUCTION, DISTRIBUTION AND
UTILIZATION OF THIS DOCUMENT OR ITS RELATED CAD DATA, AS WELL
AS COMMUNICATION OF ANY CONTINUE TO SHIP, WITHOUT EXPRESS
AUTHORIZATION, IS PROHIBITED.

DATE		
DR		
APV001 J. SANKTON	01DE03	B
APV02 SANKTON	01DE03	
APV03 R. PUHL	02DE03	
APV04		
APV05		

SUBSTANCES OF REGENERATION AND RECYCLED
CONTENT PER APTIV (049490)

MATERIAL SEE CHART

DRAWING NAME:

TAXI TERM
RING SONIC

DRAWING NUMBER

15485965

SIZE	SCALE	FRAME NO	SHEET NO	SHEET TOTAL	REV	DATE	BY	APP
A0	2:1	1 OF 1	1 OF 7	7	0			

A

Mouser Electronics

Authorized Distributor

Click to View Pricing, Inventory, Delivery & Lifecycle Information:

[Aptiv:](#)
[15485964](#)