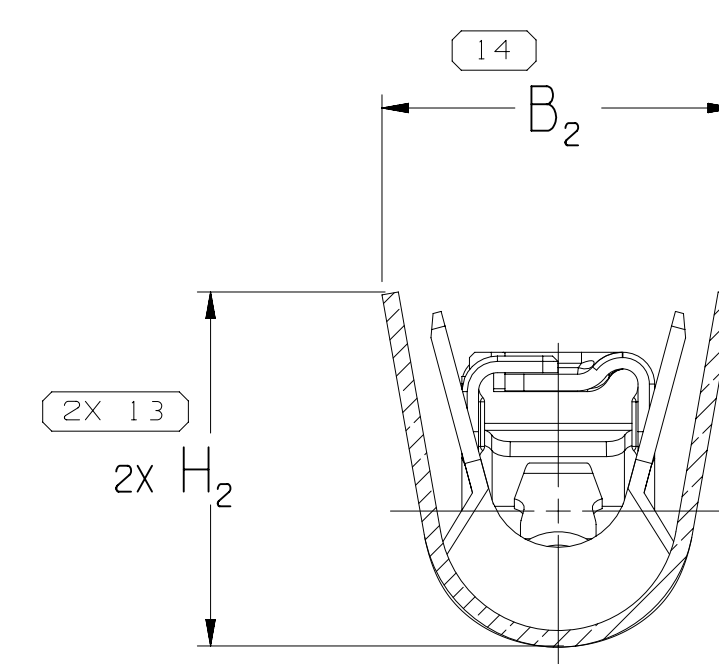
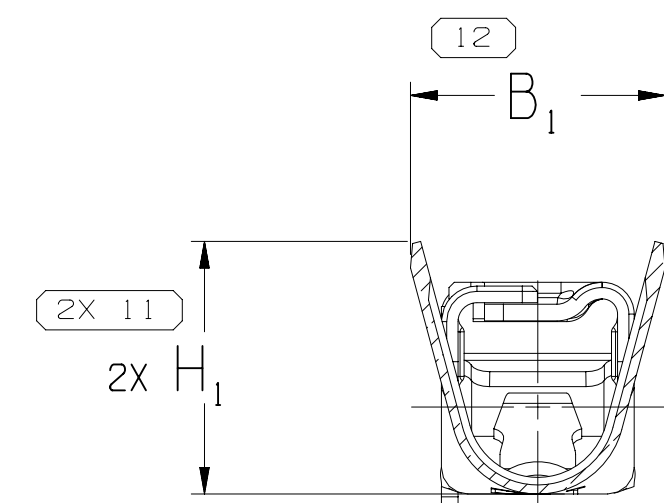
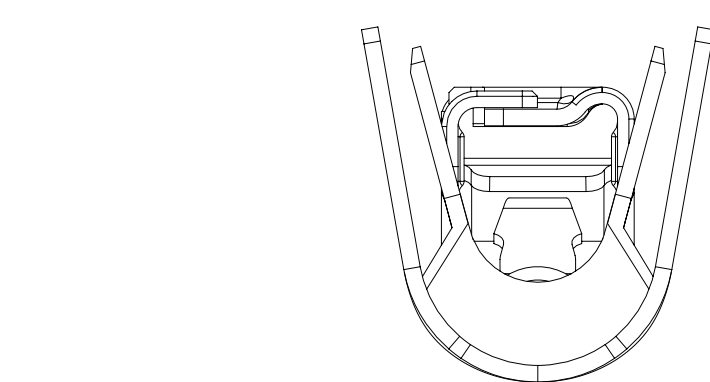
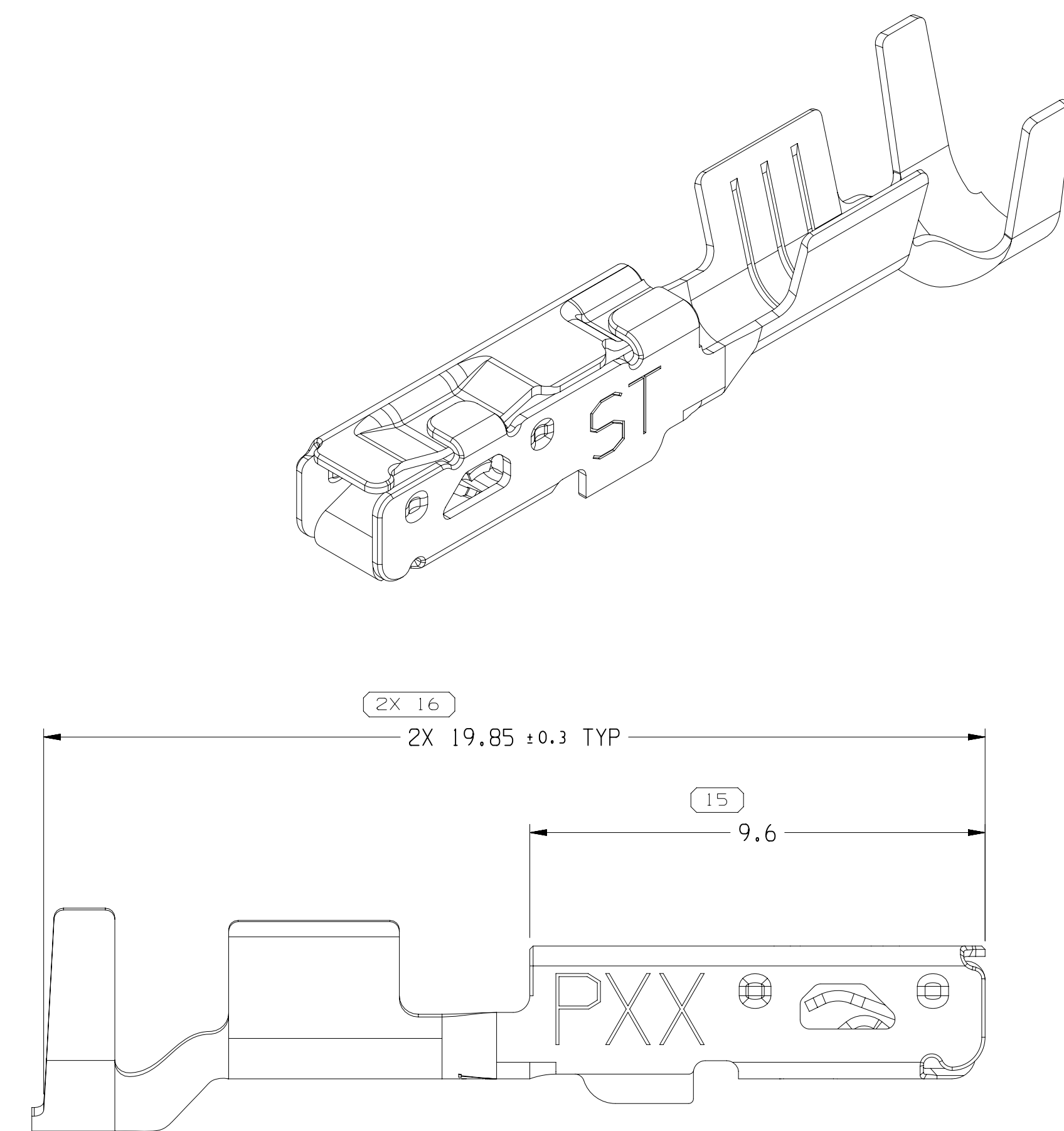
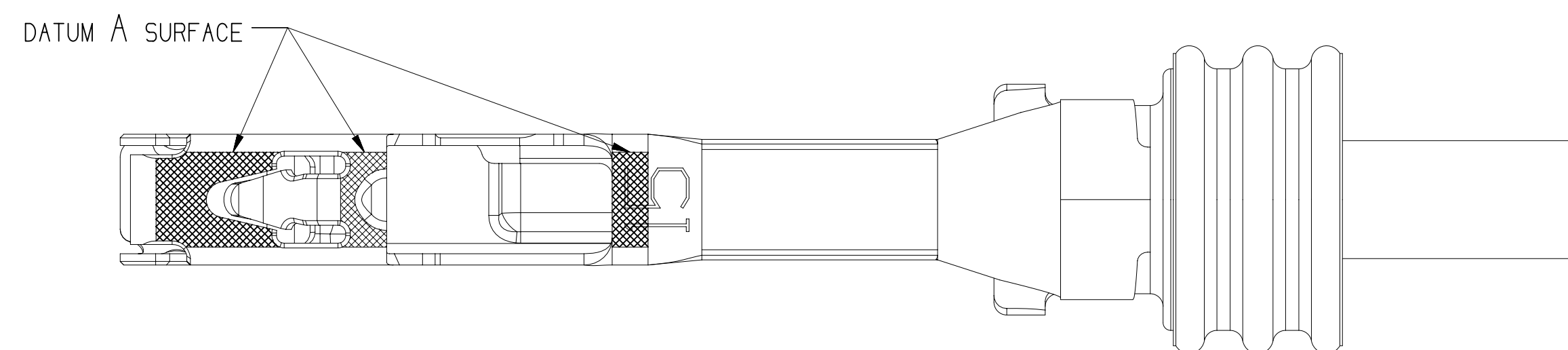
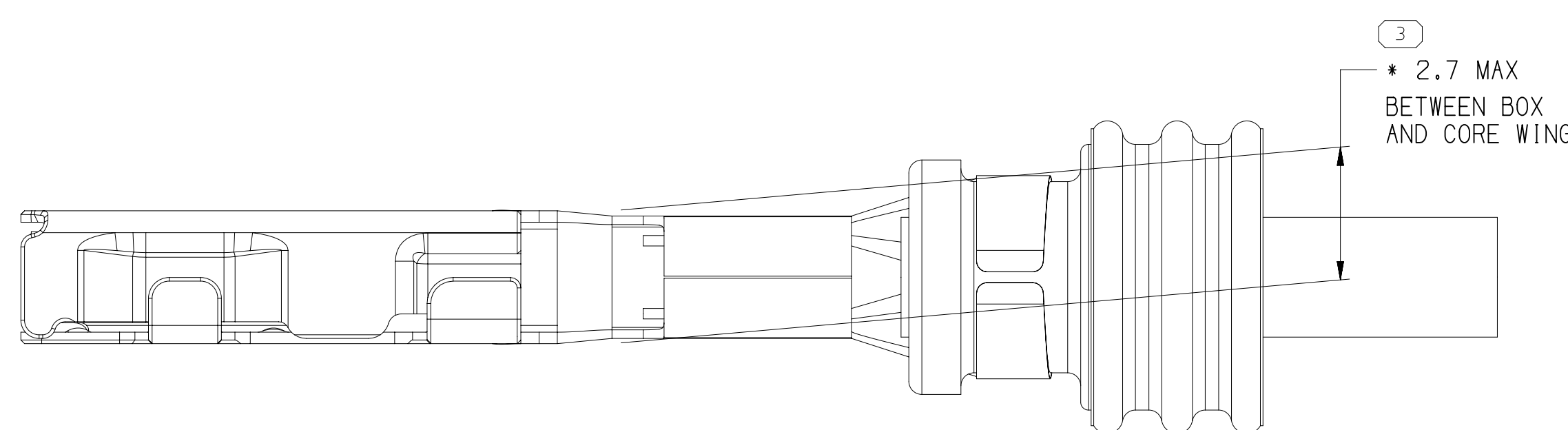


MISSING SYMBOLS
NO MISSING SYMBOL NUMBER

[illegible]

SECTION C-C



35464844	01	-	TIN PLATED COPPER ALLOY			ST	0.22 X 27.5	35464846	01	AA	35464844	NYE 7696	22	0.35	1.2 - 1.7	1.95	4.2	1.8	4.1	13834630					
35464843	01	-	TIN PLATED COPPER ALLOY			ST	0.22 X 27.5	35464845	01	AA	35464845	NYE 7696	22	0.35	1.2 - 1.7	1.95	4.4	1.8	4.4	13834623					
35318915	01	AC	TIN PLATED COPPER ALLOY			ST	0.22 X 27.5	35319761	01	AD	35318915	NYE 7696	21	0.5	1.4 - 1.9	2.1	4.2	2.1	4.1	13834630					
35318914	01	AC	TIN PLATED COPPER ALLOY			ST	0.22 X 27.5	35319760	01	AD	35318914	NYE 7696	21	0.5	1.4 - 1.9	2.1	4.4	2.1	4.4	13834623					
35318912	01	AC	TIN PLATED COPPER ALLOY			ST	0.22 X 27.5	35319759	01	AD	35318912	NYE 7696	17	0.75 - 1.0	1.7 - 2.34	2.6	4.5	2.7	4.5	13834623					
35318909	01	AC	TIN PLATED COPPER ALLOY			ST	0.22 X 27.5	35319758	01	AD	35318909	NYE 7696	15	1.25 - 1.5	1.8 - 2.4	3.4	4.65	3.4	4.7	13834614					
PART NO	REV	N/P	MATERIAL DESCRIPTION	CONTACT AREA PLATING TYPE (SEE NOTE #5)	CRIMP AREA PLATING TYPE (SEE NOTE #5)	CONTACT PLATING I.D.	MATERIAL SIZE	PART NO	REV	N/P	MATERIAL DESCRIPTION	GREASE MAT'L DESCRIPTION	CABLE I.D.	CABLE SIZE (mm <sup>2</sup> )	CABLE DIAMETER	B <sub>1</sub> ±0.15	B <sub>2</sub> ±0.25	(H <sub>1</sub> )	(H <sub>2</sub> )	TYPICAL CABLE SEAL					
UNGREASED							GREASED																		
														CABLE											

9. TYPICAL CABLE SEAL PART NUMBER IS A REFERENCE FOR AN APTIV CABLE SEAL THAT ACCEPTS CABLE SIZES SIMILAR TO THE CORRESPONDING TERMINAL AND MATES TO THE SAME CONNECTOR CAVITY. CABLE DIAMETER RANGE OF DESIRED APPLICATION NEEDS TO BE WITHIN ALLOWABLE RANGE SHOWN ON CABLE SEAL DRAWING.

<h1 style="text-align: center;">• APTIV •</h1> <p style="text-align: center;">CONNECTION SYSTEMS</p> <p style="text-align: center;">WARREN, OH</p> <p style="text-align: center;">COPYRIGHT 1919 APTIV. ALL RIGHTS RESERVED.</p> <p style="text-align: center;">THIS DRAWING IS THE PROPERTY OF APTIV AND CONTAINS APTIV CONFIDENTIAL INFORMATION. THE REPRODUCTION, DISTRIBUTION AND UTILIZATION OF THIS DOCUMENT OR ITS RELATED CAD DATA, AS WELL AS COMMUNICATION OF ANY CONTENT TO OTHERS, WITHOUT EXPRESS AUTHORIZATION, IS PROHIBITED.</p>									
								DATE	
DR									
APV01	LUIS VILLARREAL							04MR19	
APV02	ROBERT B SNADER							09MR19	
APV03	ROBERT B SNADER							08MR19	
APV04									
APV05									
SUBSTANCES OF CONCERN AND RECYCLED CONTENT PER APTIV 10949081									
MATERIAL SEE CHART									
DRAWING NAME:									
TAXI TERM F OCS 1.5 SEALED									
DRAWING NUMBER									
13887280									
SIZE	SCALE	FRAME	SHEET NO	STO	REV	NO			
A0	1:1	1 OF 1	4 OF						

# Mouser Electronics

Authorized Distributor

Click to View Pricing, Inventory, Delivery & Lifecycle Information:

[Aptiv:](#)  
[35319759](#)