

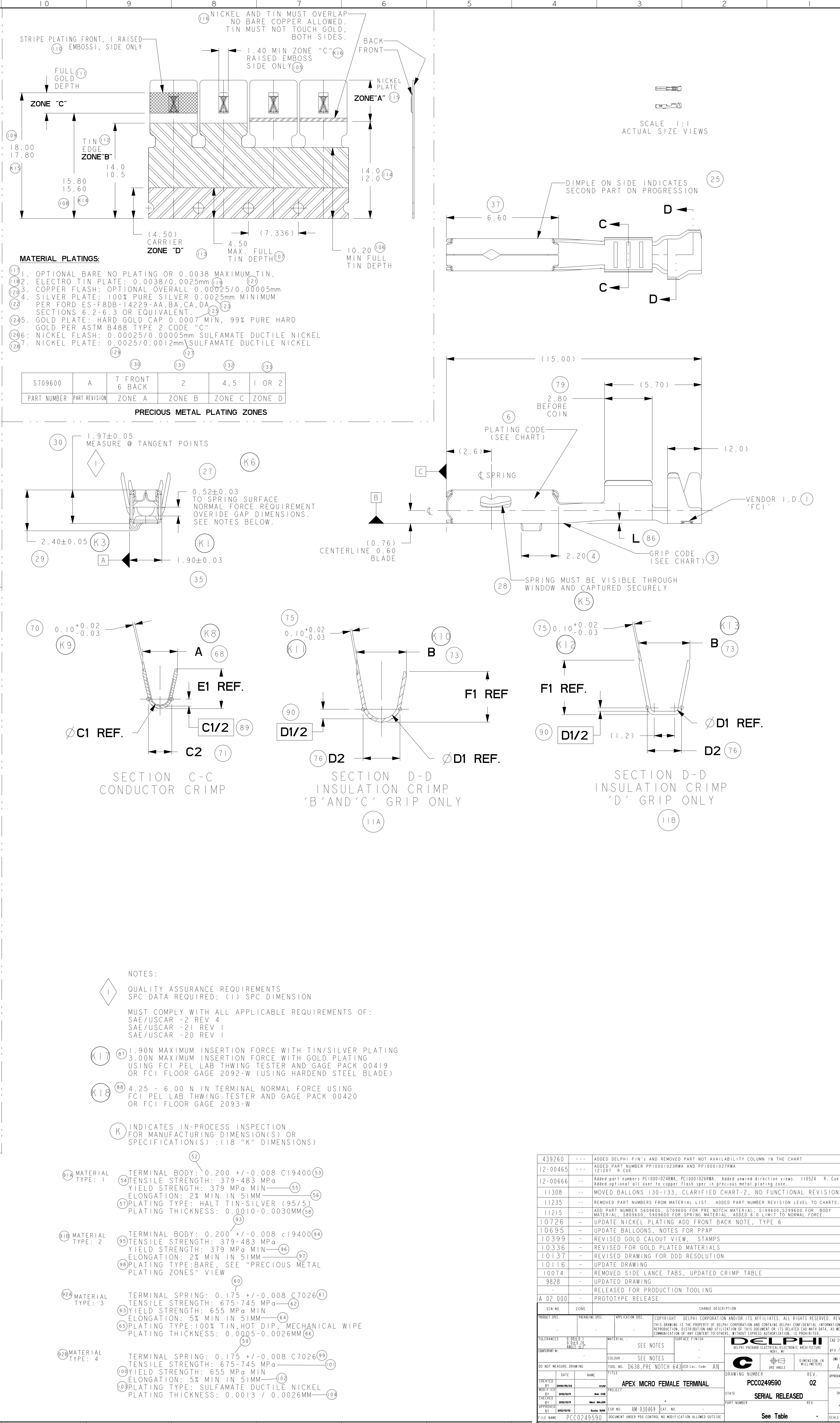
TABLE 2- TERMINAL GRIP DIMENSIONS

GRIP CODE	A +/-0.3	B ±0.4	C1 REF	C2 +/-0.20	D1 REF	D2 +/-0.30	E1 REF	F1 REF	L +/-0.10	E +/-0.03	F +/-0.02	G +/-0.03	J +/-0.05	K +/-0.02	N +/-0.03	P +/-0.05	R +/-0.03	S +/-0.05	T +/-0.05	U +/-0.05
B	1.8	2.5	0.80	1.22	1.6	2.04	2.1	2.6	0.20	1.40	0.38	0.10	2.00	0.63	0.36	0.94	1.80	0.91	-	-
C	2.0	2.8	1.00	1.43	1.8	2.23	2.6	3.0	0.20	1.75	0.50	0.12	2.40	0.86	0.38	1.05	1.95	1.05	-	-
D	2.5	3.0	1.30	1.74	0.4	2.10	3.3	3.0	0.30	1.95	0.60	0.15	2.80	0.90	0.16	2.00	2.00	0.60	1.20	0.80

CRIMP TOOL DIMENSIONS (FOR REFERENCE ONLY)

GRIP CODE	A +/-0.3	B ±0.4	C1 REF	C2 +/-0.20	D1 REF	D2 +/-0.30	E1 REF	F1 REF	L +/-0.10	E +/-0.03	F +/-0.02	G +/-0.03	J +/-0.05	K +/-0.02	N +/-0.03	P +/-0.05	R +/-0.03	S +/-0.05	T +/-0.05	U +/-0.05
B	1.8	2.5	0.80	1.22	1.6	2.04	2.1	2.6	0.20	1.40	0.38	0.10	2.00	0.63	0.36	0.94	1.80	0.91	-	-
C	2.0	2.8	1.00	1.43	1.8	2.23	2.6	3.0	0.20	1.75	0.50	0.12	2.40	0.86	0.38	1.05	1.95	1.05	-	-
D	2.5	3.0	1.30	1.74	0.4	2.10	3.3	3.0	0.30	1.95	0.60	0.15	2.80	0.90	0.16	2.00	2.00	0.60	1.20	0.80

MVL PART NUMBER	MVL PART REVISION	DELPHI PART NUMBER	DELPHI PART REVISION	N/P	GRIP CODE	PLATING TYPE	PLATING CODE	BODY MATERIAL TYPE	SPRING MATERIAL TYPE
PP10001023	A	13889401	01	AB	B	TIN-SILVER	TS	1	3
PP10001023RWA	A	33510993	01	AB	B	TIN-SILVER	TS	1	3
PP10001024	A	33510994	01	AB	C	TIN-SILVER	TS	1	3
PP10001024RWA	A	33510995	01	AB	C	TIN-SILVER	TS	1	1
PPT000L025		33510996	01	AA	D	TIN-SILVER	TS	1	3
PP10001026	A	13889400	01	AB	B	GOLD	GS	2	4
PP10001026RWA	A	33510997	01	AB	B	GOLD	GS	2	4
PPT000L027	A	33510998	01	AB	C	GOLD	GS	2	4
PP10001027RWA	A	33510999	01	AB	C	GOLD	GS	2	4
PPT000L028		33511000	01	AA	D	GOLD	GS	2	4



Mouser Electronics

Authorized Distributor

Click to View Pricing, Inventory, Delivery & Lifecycle Information:

[Aptiv:](#)
[33510994](#)