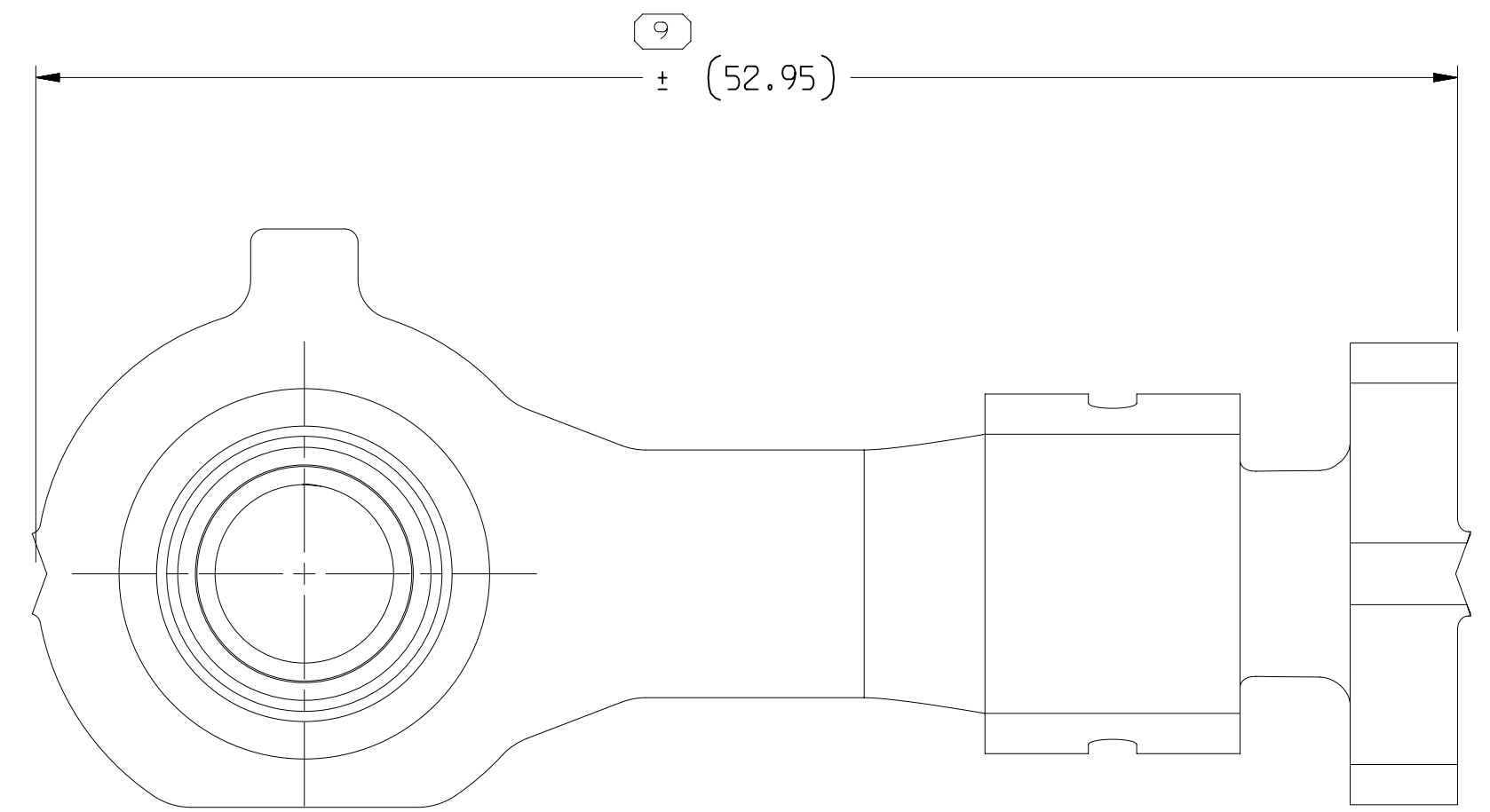
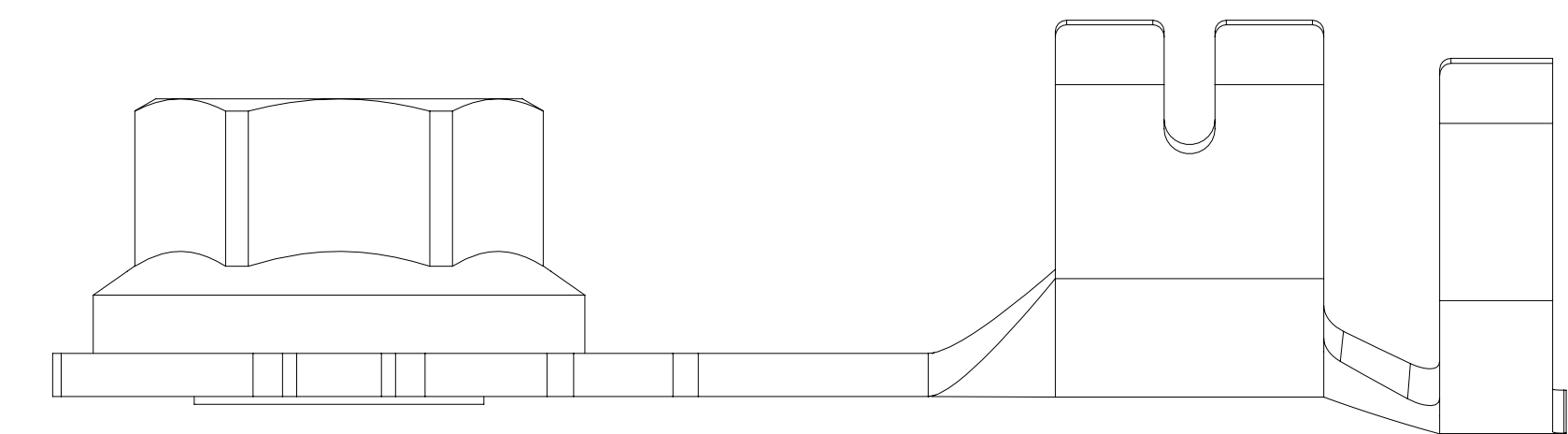
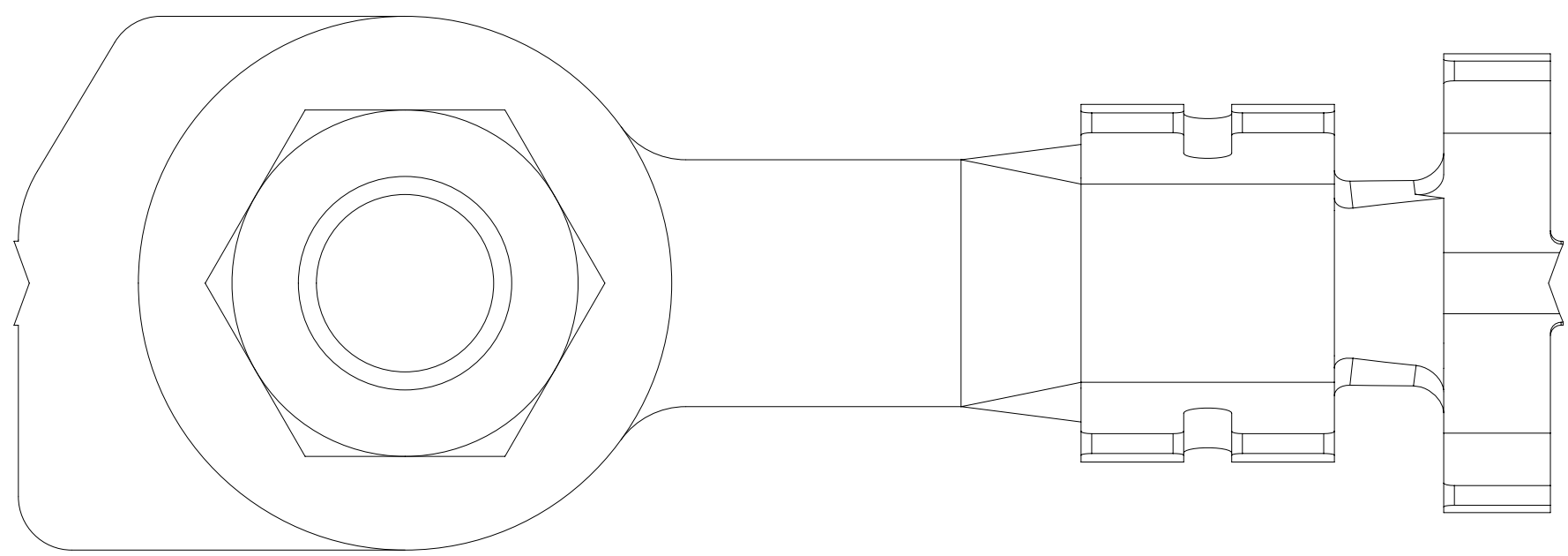
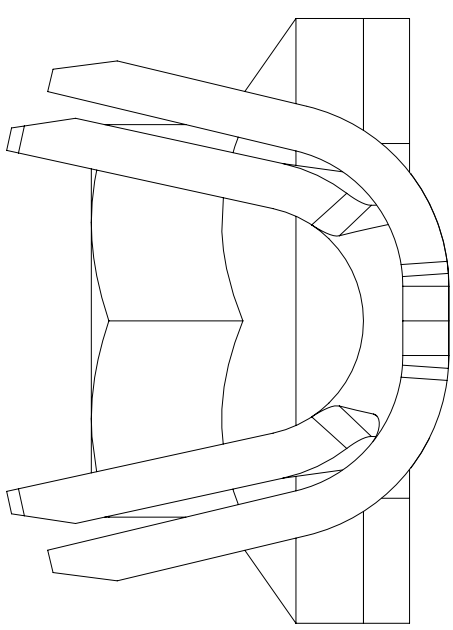
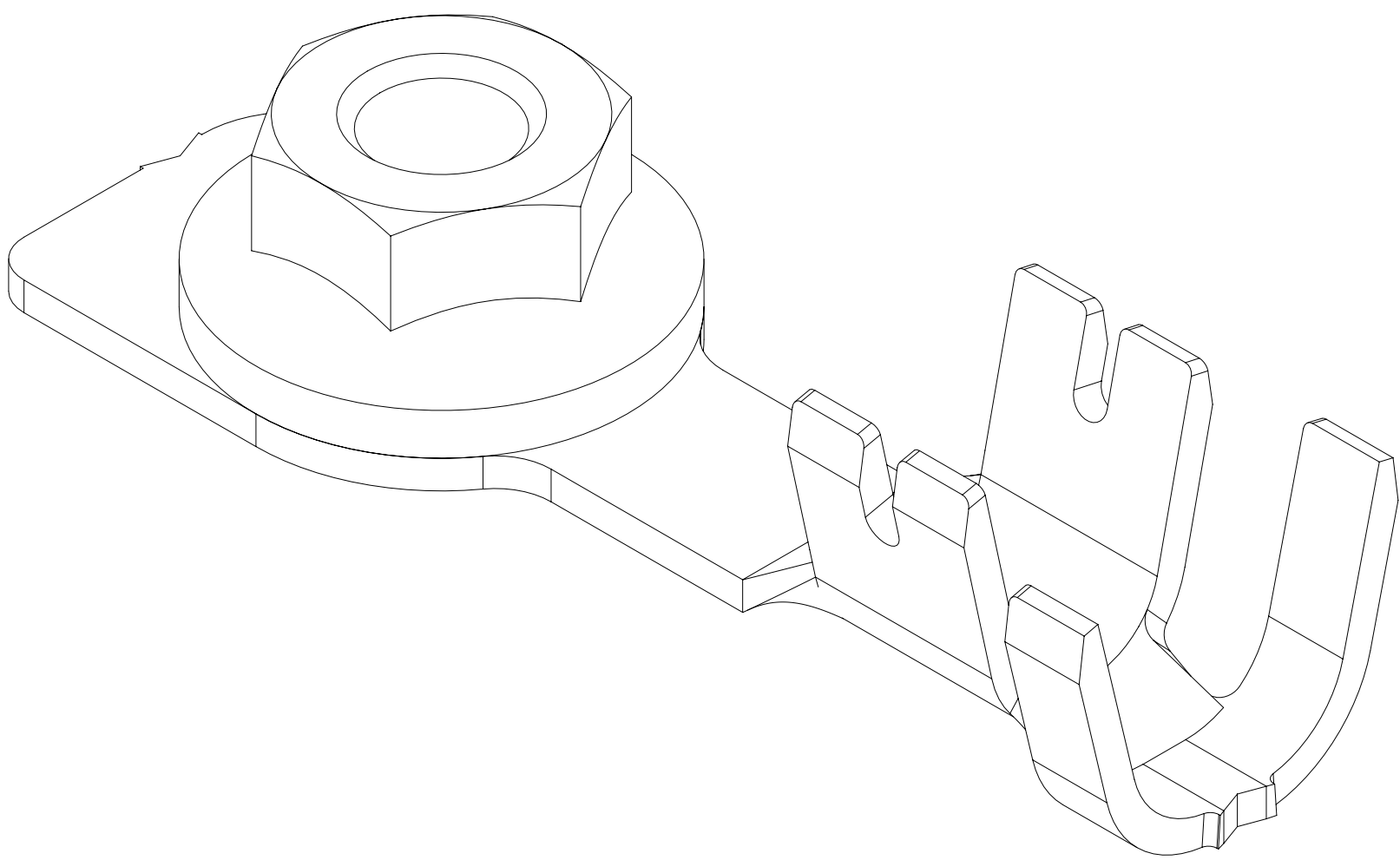
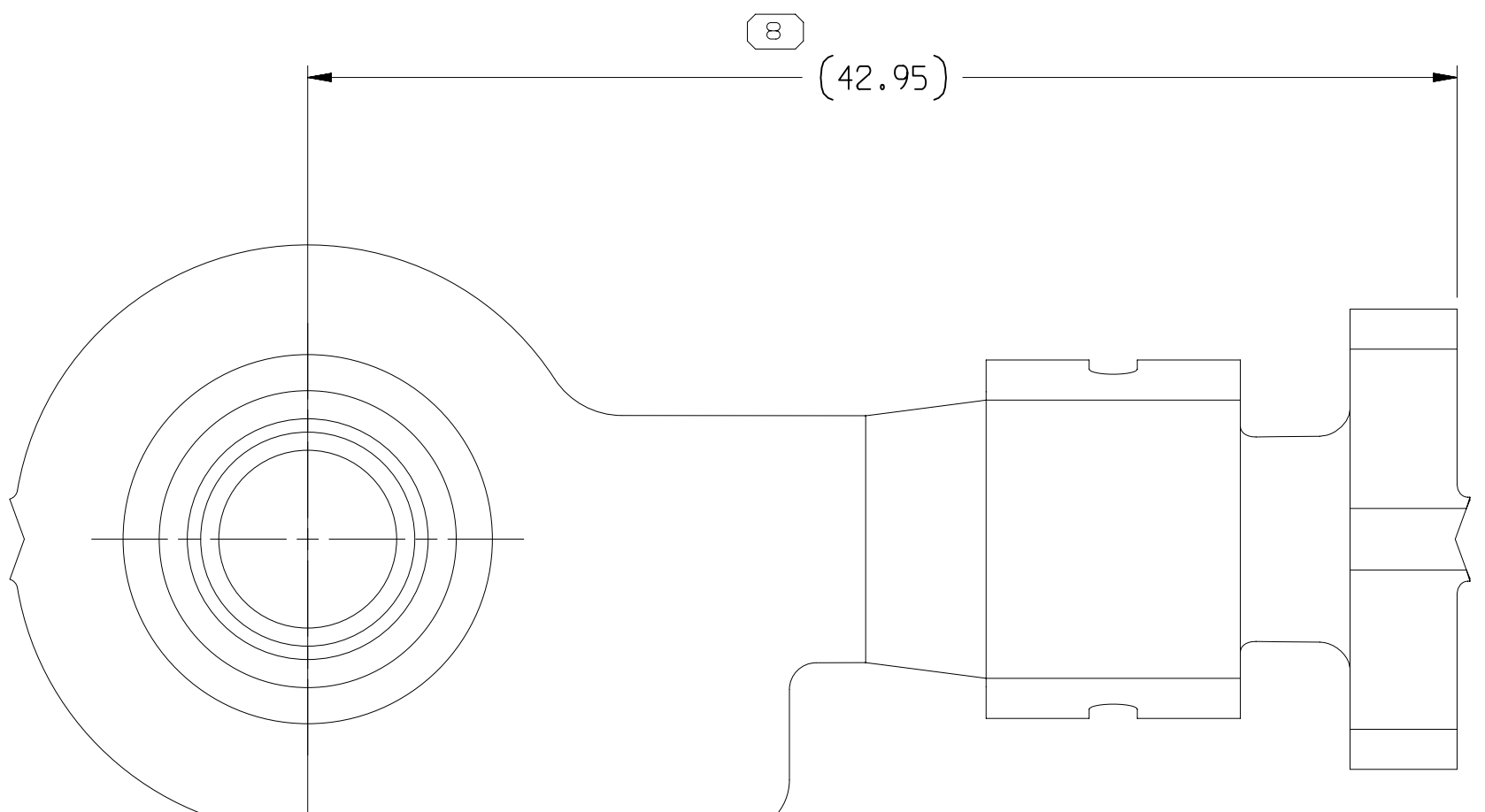


SYMBOL DEFINITION				MISSING SYMBOLS	
A DIMENSION WITHOUT AN INSPECTION REPORT SYMBOL DOES NOT REQUIRE INSPECTION. IT MAY BE CONTROLLED ON THE INDIVIDUAL COMPONENT DRAWING.				TOTAL NO OF INSPECTIONS REQUIRED	9
				LAST NO. USED	9

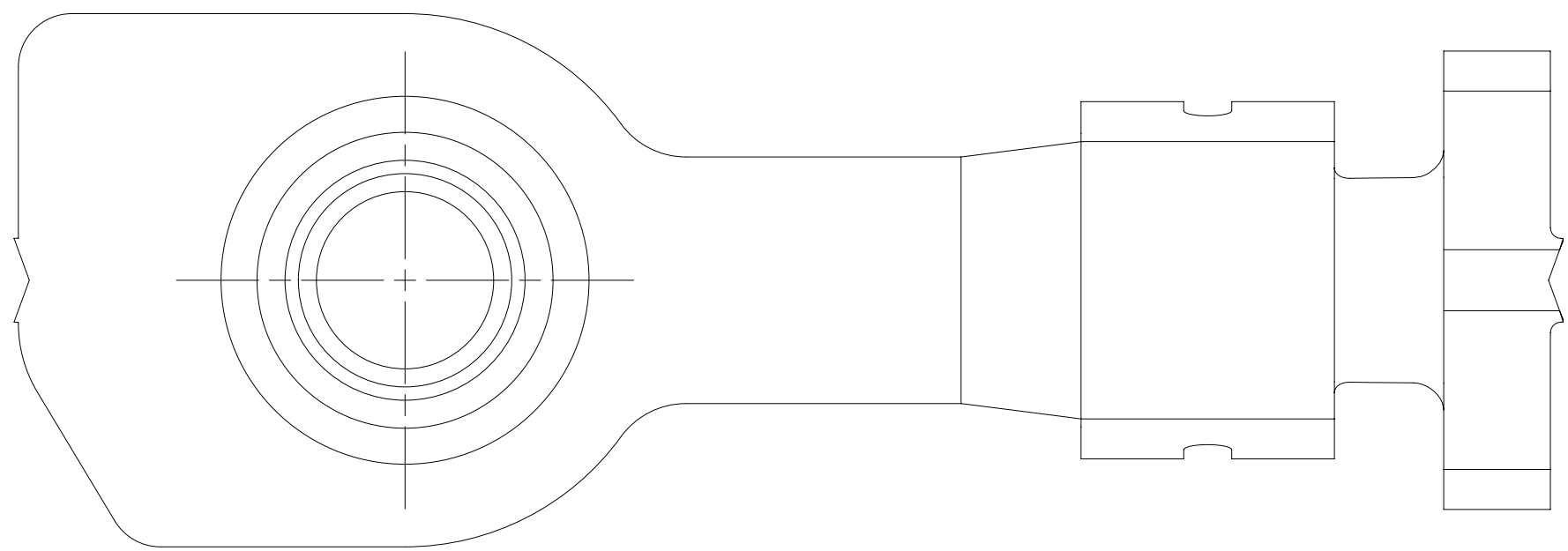
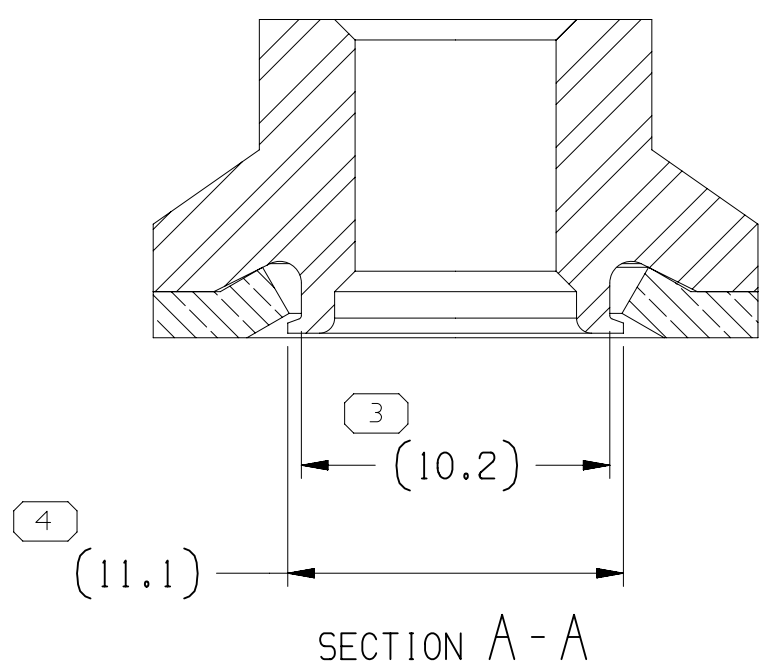
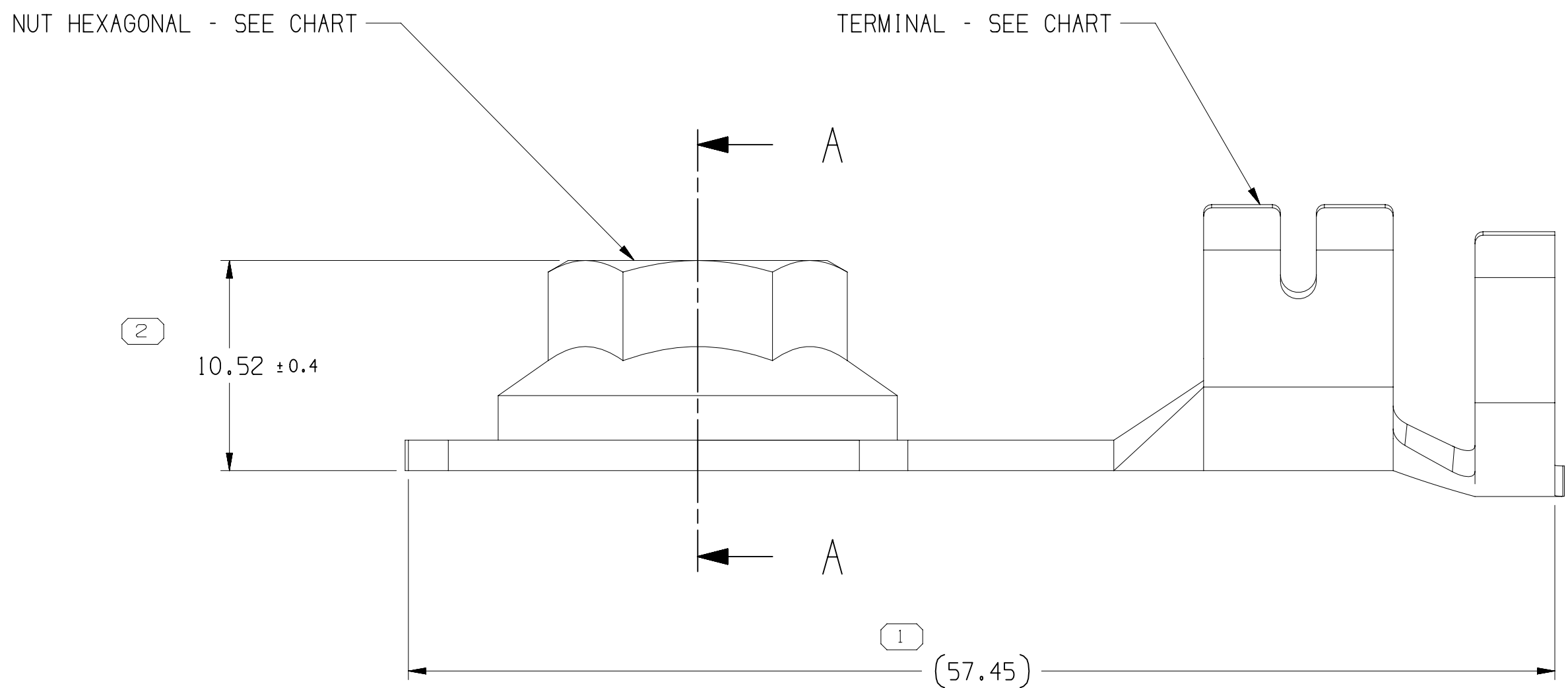
DWG STATUS					ZONE	REVISION HISTORY	AUTH	DR	APVD/APVD	
DATE	STG	REV	N/P	CHG					1	2
07NO13	R	01	-	-		ALL PARTS - RELEASED PART DRAWING	424425	JLP	JAA	LRS
20AUI14	R	02	-	-		33109723-25 - NUT WAS "PEM YSN-40299-21" AND ADDED DIMS (2 PLCS), (57,45) WAS (53,7) AND ADDED NEW TOLERANCE CHART & STOCK THICKNESS INFO ON NOTE & 33183551 - RELEASED	427027	ABH	JVM	ERG
30SE14	R	03	-	-		33109723-25 - ADDED "REPLACED BY" COLUMN: 33109725 - NUT WAS 33182028; 33183551 - TERMINAL WAS 33109725 AND 33194394-96 - RELEASED	427665	NRM	JVM	ERG
16DE14	R	04	-	-		33183551, 33194394-96 - REVISED GRAPHICS; 33109723-25 - INACTIVE	428415	ORA	JVM	ERG
22DE14	R	05	-	-		ALL ACTIVE PARTS - PSD WAS DIM 4, DIM 10.52±0.4 WAS (9), DIM (11,1) WAS 10.8 & ADDED PULL OUT AND TORQUE NOTES; 33194394-96 - UPDATED PART AVAILABILITY	428526	ERG	VMR	ERG
26OC15	R	06	-	-		ADDED "SHT 1 OF 2"	431044	JTV	JTV	ERG
02DE15	R	07	-	-		ADDED "SHT 1 OF 4"	431272	JTV	JTV	ERG
09SE16	R	08	-	-		"SHT 1 OF 5" WAS "SHT 1 OF 4"	434041	ABH	JVM	ERG
14FE22	R	09	-	-		"SHT 1 OF 6" WAS "SHT 1 OF 5"	556094	GLG	JAA	AG



TYPE 103
SAME AS TYPE 101
EXCEPT AS SHOWN



TYPE 102
SAME AS TYPE 101
EXCEPT AS SHOWN



TYPE 101

NOTES

- UNLESS OTHERWISE SPECIFIED AND/OR INDICATED:
DIMENSIONS ARE TO FACE OF VIEW SHOWN AND AUTOMATICALLY ROUNDED BY COMPUTER FOR INSPECTION (SEE MATH MODEL FOR PRECISE DIMENSIONS). FOR ALL OTHER DIMENSIONS NOT SHOWN BUT REQUIRED FOR TOOL BUILD, SEE MATH MODEL FOR PRECISE TOOL PATH DATA.
- FOR TERMINALS WITH STOCK THICKNESS OF 1.3MM OR GREATER AND TOOLING PRODUCED AFTER 01AUI14 REFER TO ADDITIONAL TOLERANCE CHART.
- HEX NUT MUST WITHSTAND A MINIMUM PUSH OUT FORCE OF 110N.
- HEX NUT MUST FREELY ROTATE WHEN A MIN TORQUE VALUE OF 2NM IS APPLIED.

33194396	02	-	103	33109721	33194397	-	33183551	01	AB
33194395	02	-	102	33109720	33182028	-	-	-	-
33194394	02	-	101	33109719	33182028	-	-	-	-
33109725	02	AB	103	33109721	33194397	33194396	-	-	-
33109724	02	AB	102	33109720	33182028	33194395	-	-	-
33109723	02	AB	101	33109719	33182028	33194394	-	-	-
PART	NO	REV	N/P	TYPE	TERMINAL	NUT	REPLACED BY	10° ±5° PART NO	REV N/P

TOLERANCE CHART FOR TERMINALS WITH A STOCK THICKNESS OF 1.3MM OR GREATER AND TOOLING PRODUCED AFTER 01AUI14			
DIMENSIONAL RANGE (MM)			
FROM	TO	BLANKED DIMS	ANGULAR
0	12	>12	
TOLERANCE UNLESS OTHERWISE SPECIFIED			
±0.15	±0.3	±0.4	±2°
STAMPING DIE DIMS			
FROM	TO	ANGULAR	
0	2	>10	
TOLERANCE UNLESS OTHERWISE SPECIFIED			
±0.15	±0.3	±0.4	±4°
POST PROCESSED DIMS			
FROM	TO	ANGULAR	
0	2	>10	
TOLERANCE UNLESS OTHERWISE SPECIFIED			
±0.15	±0.3	±0.4	±7°

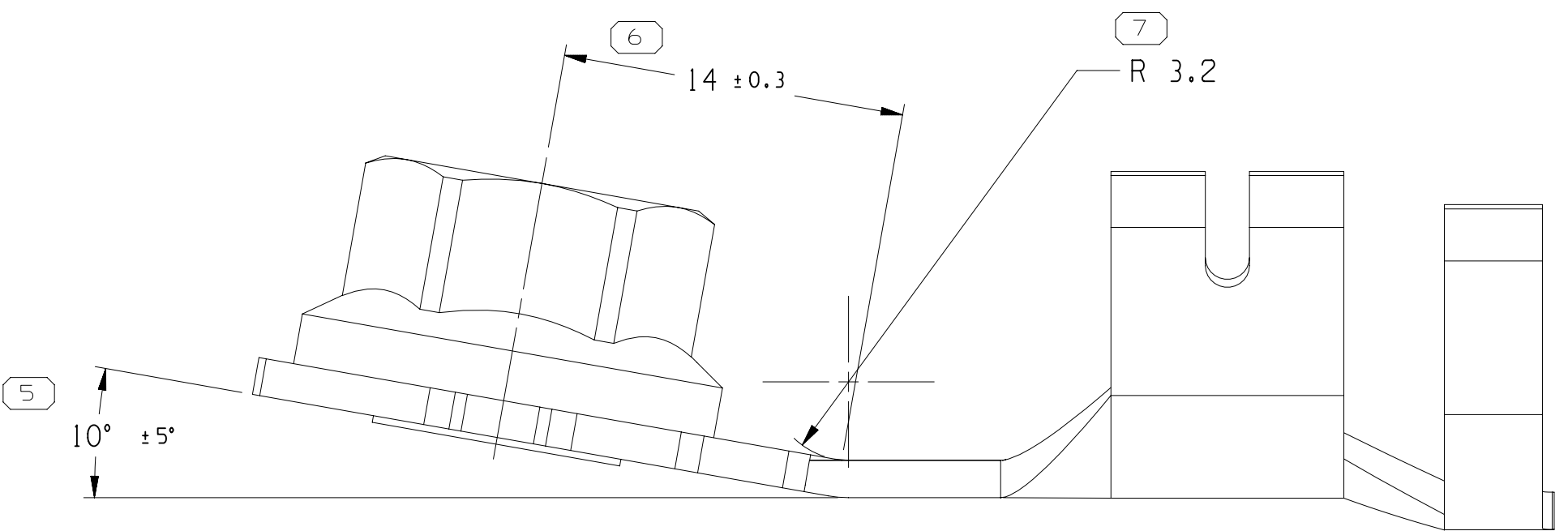
DIMENSIONS ENCLOSED IN () INDICATE REFERENCE DIMENSIONS AND NO TOLERANCE LIMITS ARE ESTABLISHED			
DIMENSIONAL RANGE (MM)			
FROM	TO	CHART	
0	12	>12	
TOLERANCE UNLESS OTHERWISE SPECIFIED			
±0.1	±0.2	±0.4	±2°
ANGULAR TOLERANCE ±2°			

A - LINE DRAWN THROUGH A PART NUMBER INDICATES THAT PHYSICAL PARTS ARE NOT AVAILABLE FOR ORDERING.			
PART NUMBERS THAT DO NOT HAVE A LINE PRESENT INDICATE THAT PHYSICAL PARTS ARE AVAILABLE FOR ORDERING.			
CONTACT APTIV SALES TO ASSURE AVAILABILITY OF PARTS.			
DWS TYPE			
PART DRAWING			
STYLE			
VOLUME (CM)			
DISTR CODE			
UNLESS OTHERWISE SPECIFIED			
THIS DOCUMENT IS IN ACCORDANCE WITH ASME Y14.5M-1994 AS MODIFIED BY THE 2003 GLOBAL DIMENSIONS AND TOLERANCING ADDENDUM-2003. SEPARATE PATTERNING OF FEATURES MAY BE ORDERED SEPARATELY REGARDLESS OF DATUM REFERENCES.			
ALL DIMENSIONS ARE IN MILLIMETERS			
REFERENCE			

THIRD ANGLE PROJECTION			
DO NOT SCALE			
USE MATH DATA			

• APTIV •			
CONNECTION SYSTEMS			
WARREN, OH			
COPYRIGHT 2013 APTIV. ALL RIGHTS RESERVED.			
THIS DRAWING IS THE PROPERTY OF APTIV AND CONTAINS APTIV CONFIDENTIAL INFORMATION. THE REPRODUCTION, DISTRIBUTION AND UTILIZATION OF THIS DOCUMENT OR ITS RELATED CAD DATA, AS WELL AS COMMUNICATION OF ANY CONTENT TO OTHERS, WITHOUT EXPRESS AUTHORIZATION, IS PROHIBITED.			
DR		DATE	
APVD1	JOSE L. PUENTE	07NO13	
APVD2	J. S. ALVARADO	07NO13	
APVD3	LUIS SALINAS	07NO13	
APVD4			
APVD5			
SUBSTANCES OF CONCERN AND RECYCLED CONTENT PER APTIV 10949001			
MATERIAL SEE CHART			
DRAWING NAME			
TAXI ASM TERM RING HEX NUT SN			
DRAWING NUMBER			
33128259			
SIZE	SCALE	FRAME NO	SHEET NO
A0	4:1	1 OF 1	1 OF 6
STG	REV	N/P	
0			09

BEND ANGLE VIEW (SEE CHART)



Mouser Electronics

Authorized Distributor

Click to View Pricing, Inventory, Delivery & Lifecycle Information:

[Aptiv:](#)

[33194396](#)