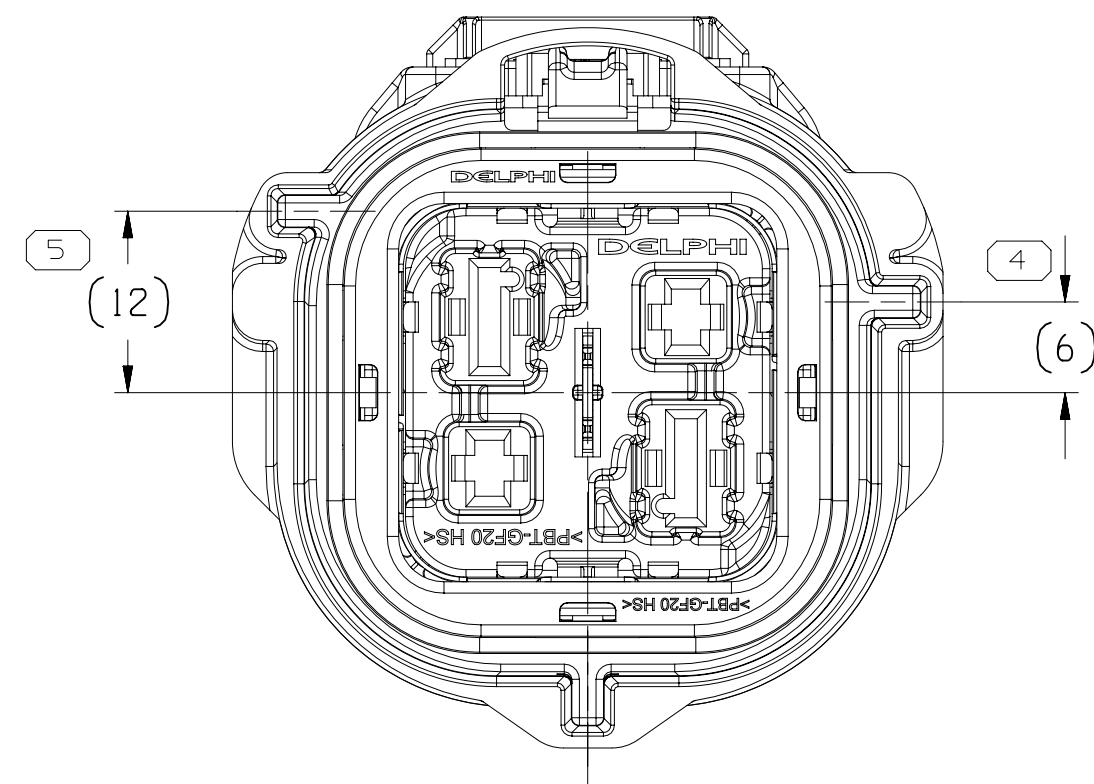
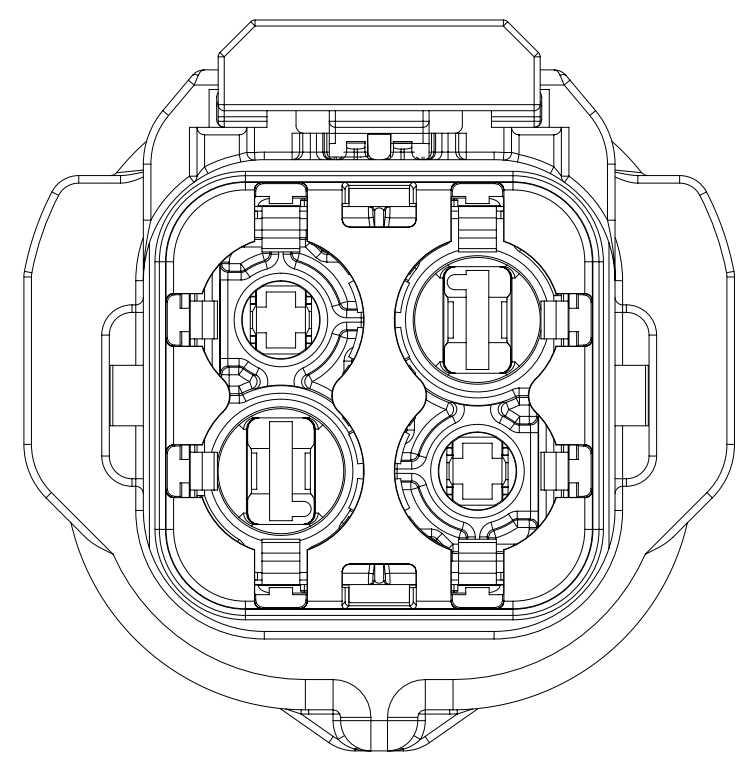
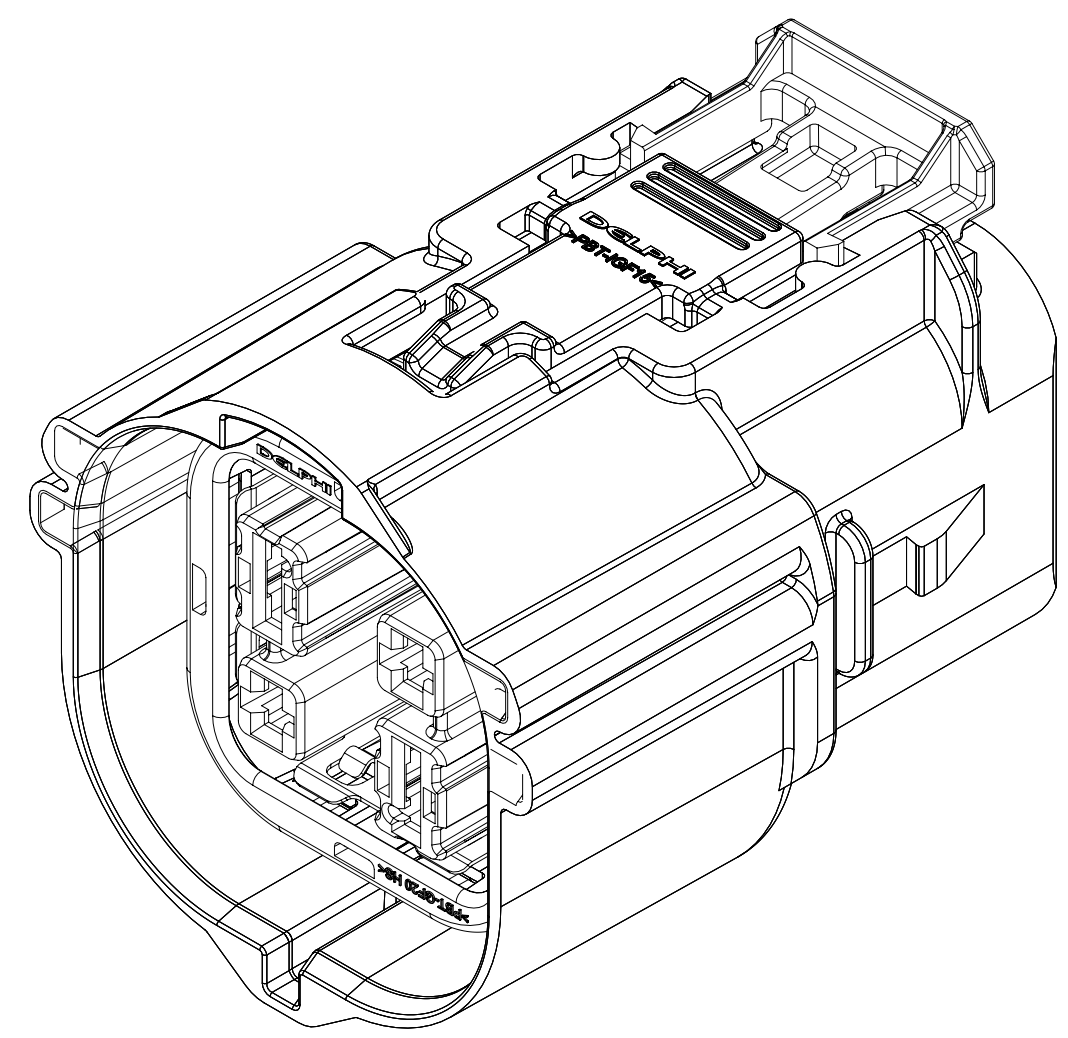
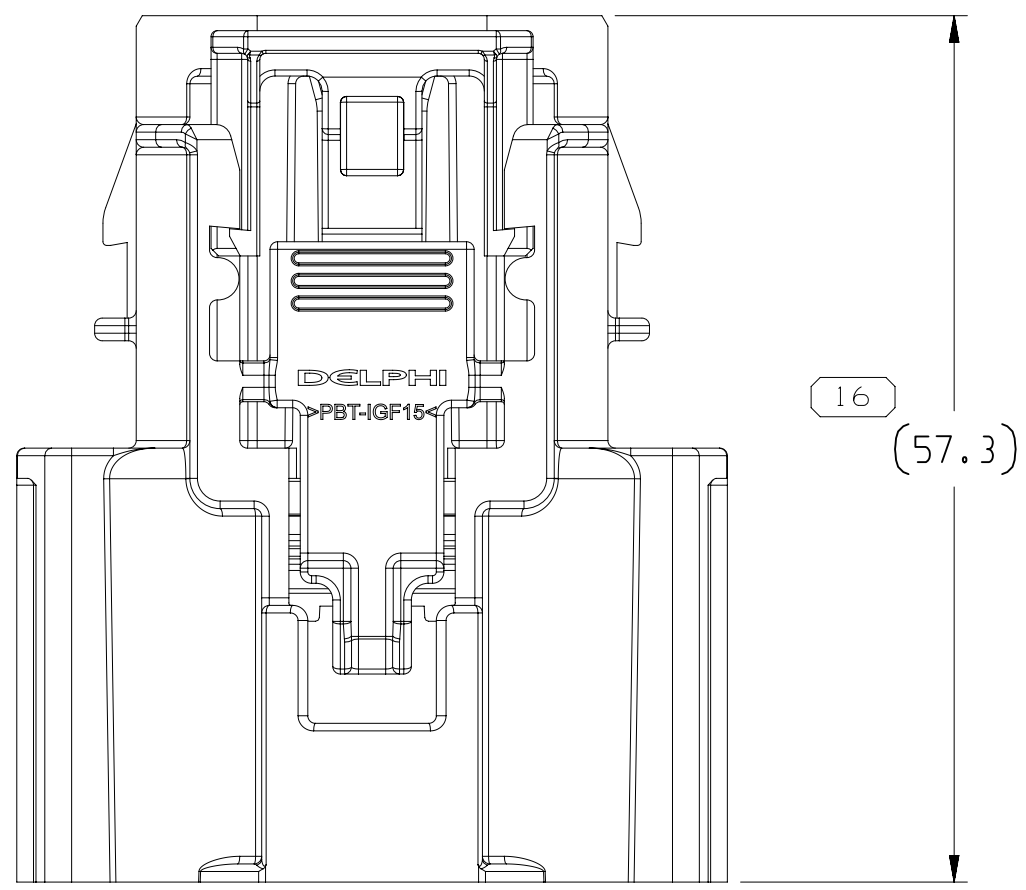
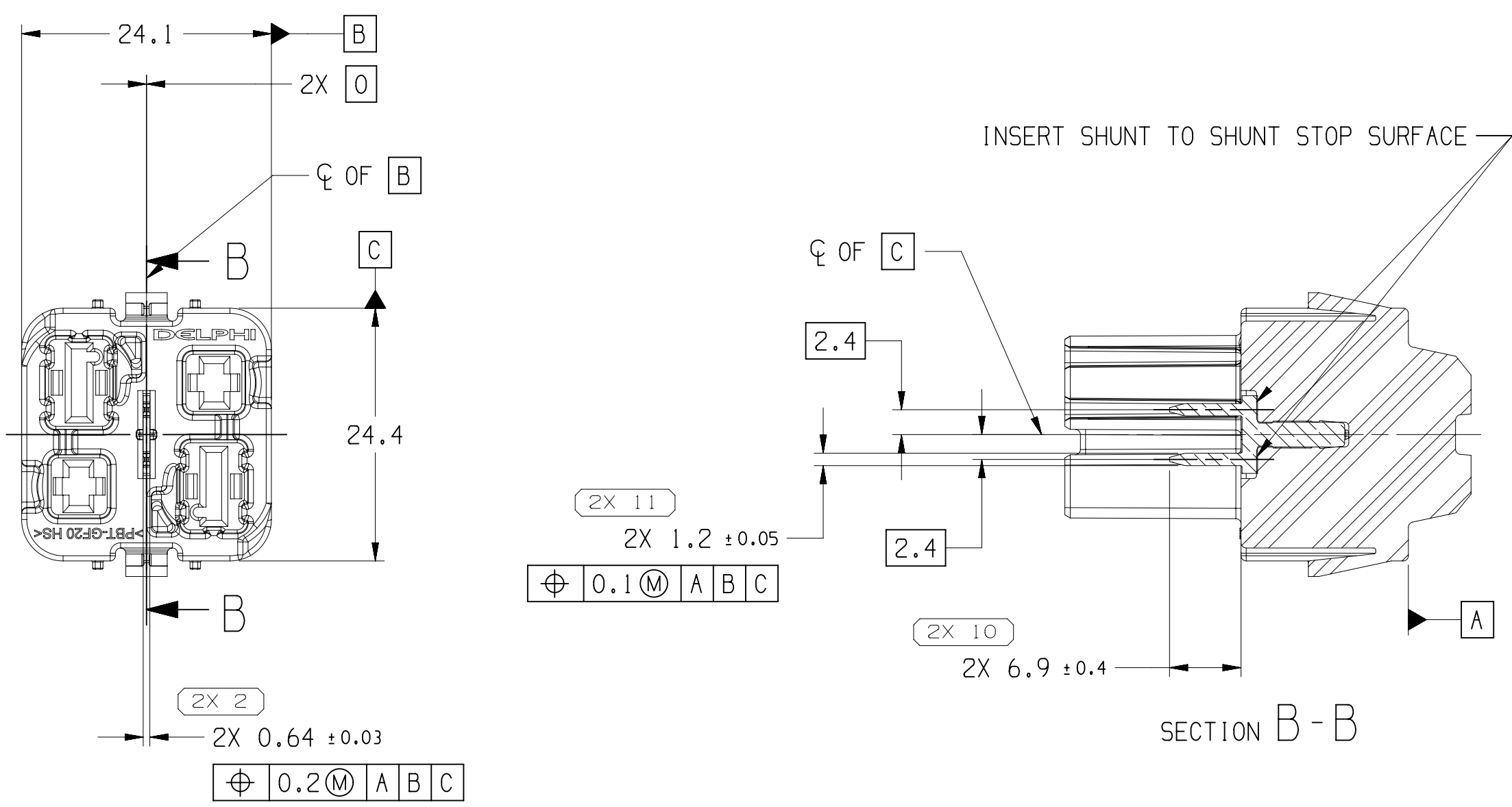
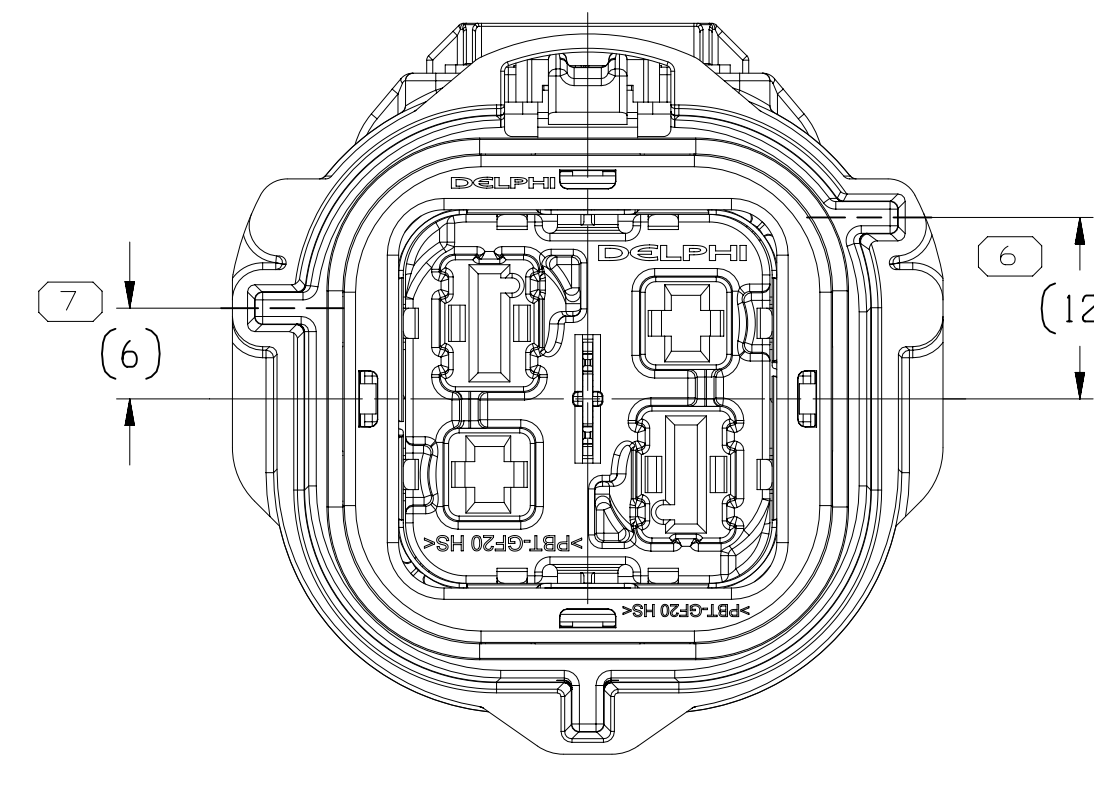


ADDITIONAL ASSEMBLY INFORMATION

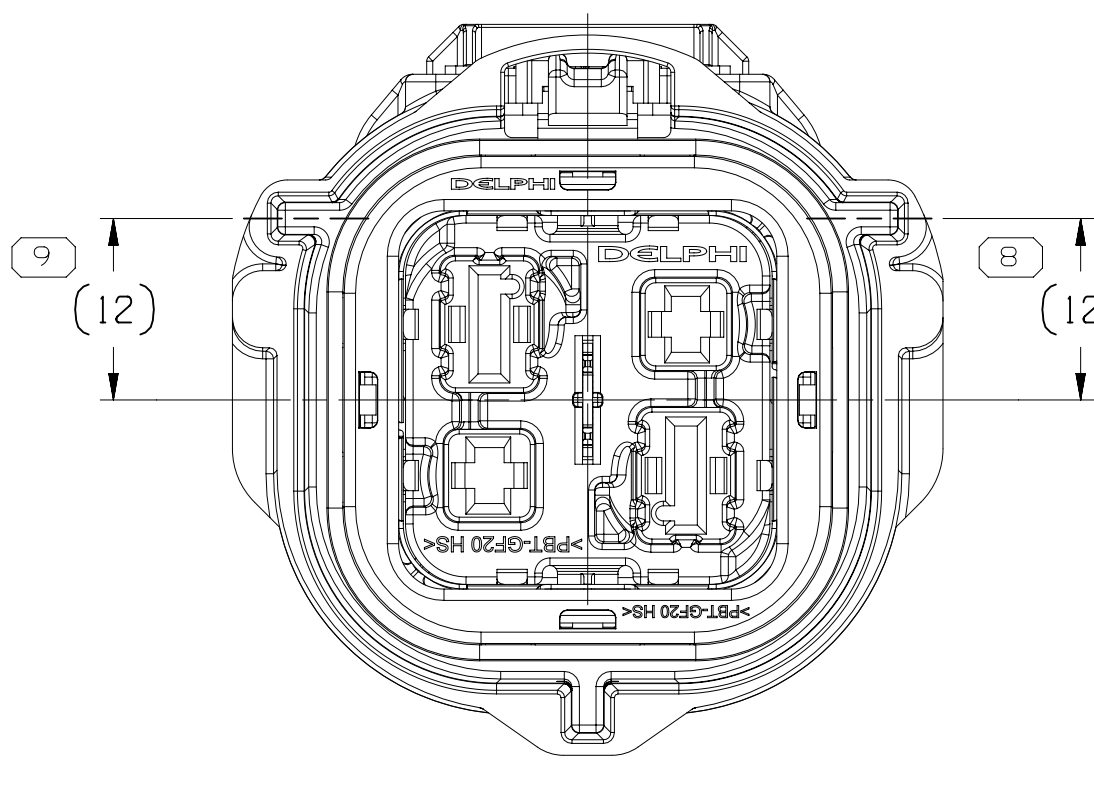
INNER CONNECTOR AND SHUNT SHALL BE ASSEMBLED AS INDICED BEFORE INSERTION INTO OUTER HOUSING ASSEMBLY.



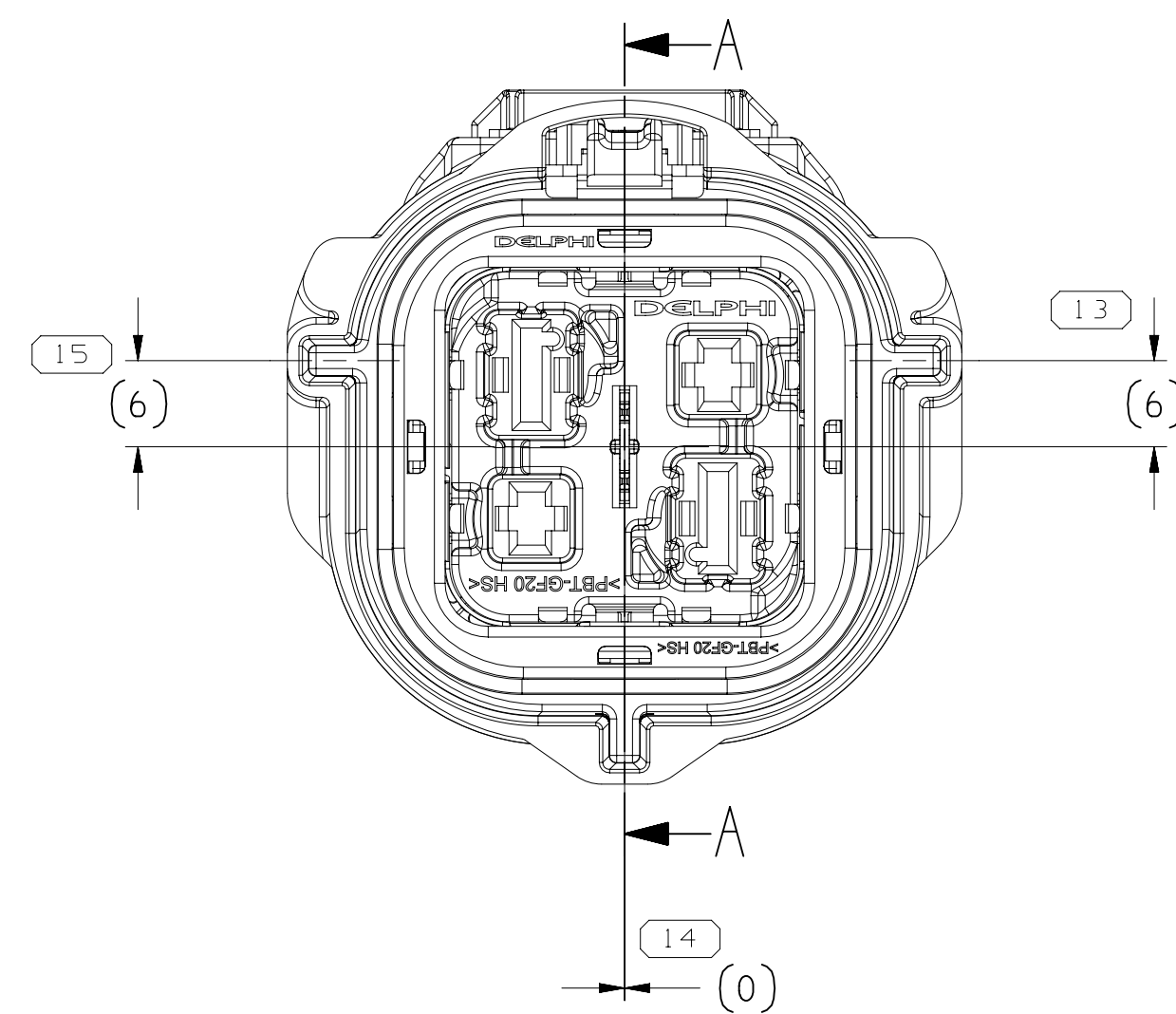
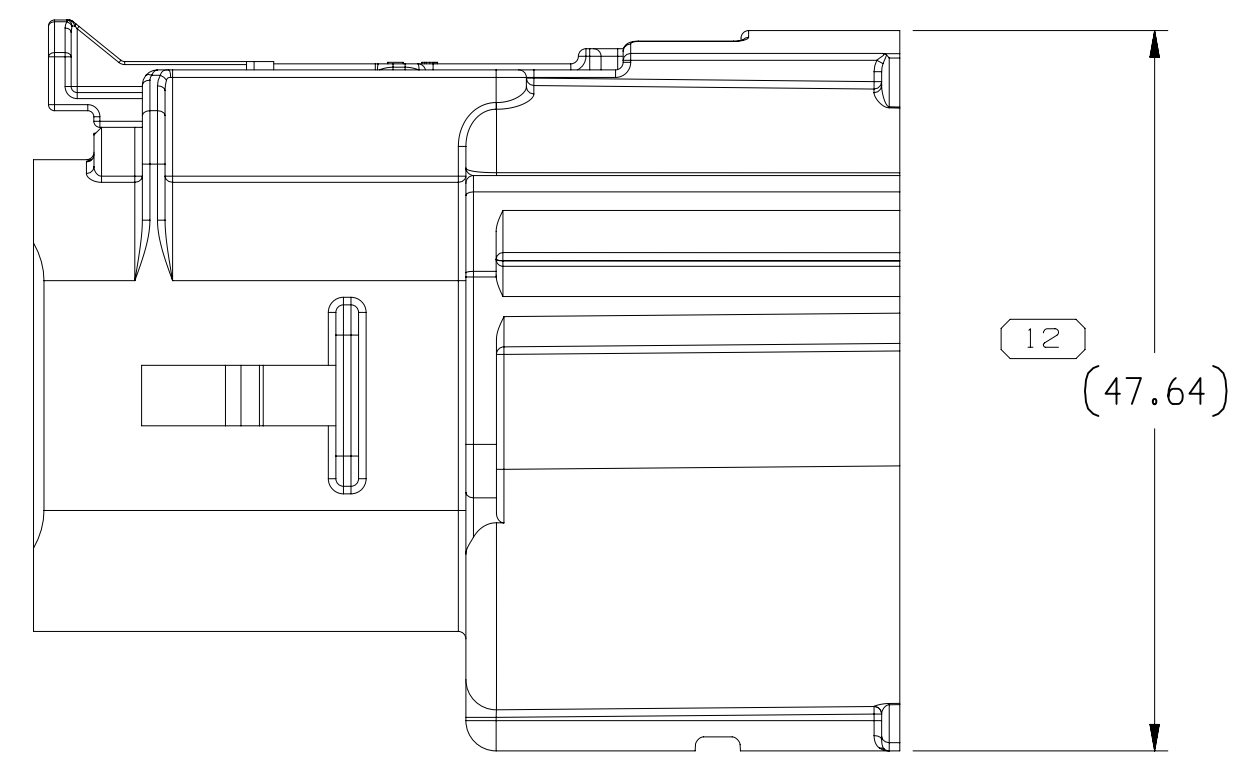
TYPE 102
SAME AS TYPE 101
EXCEPT AS SHOWN



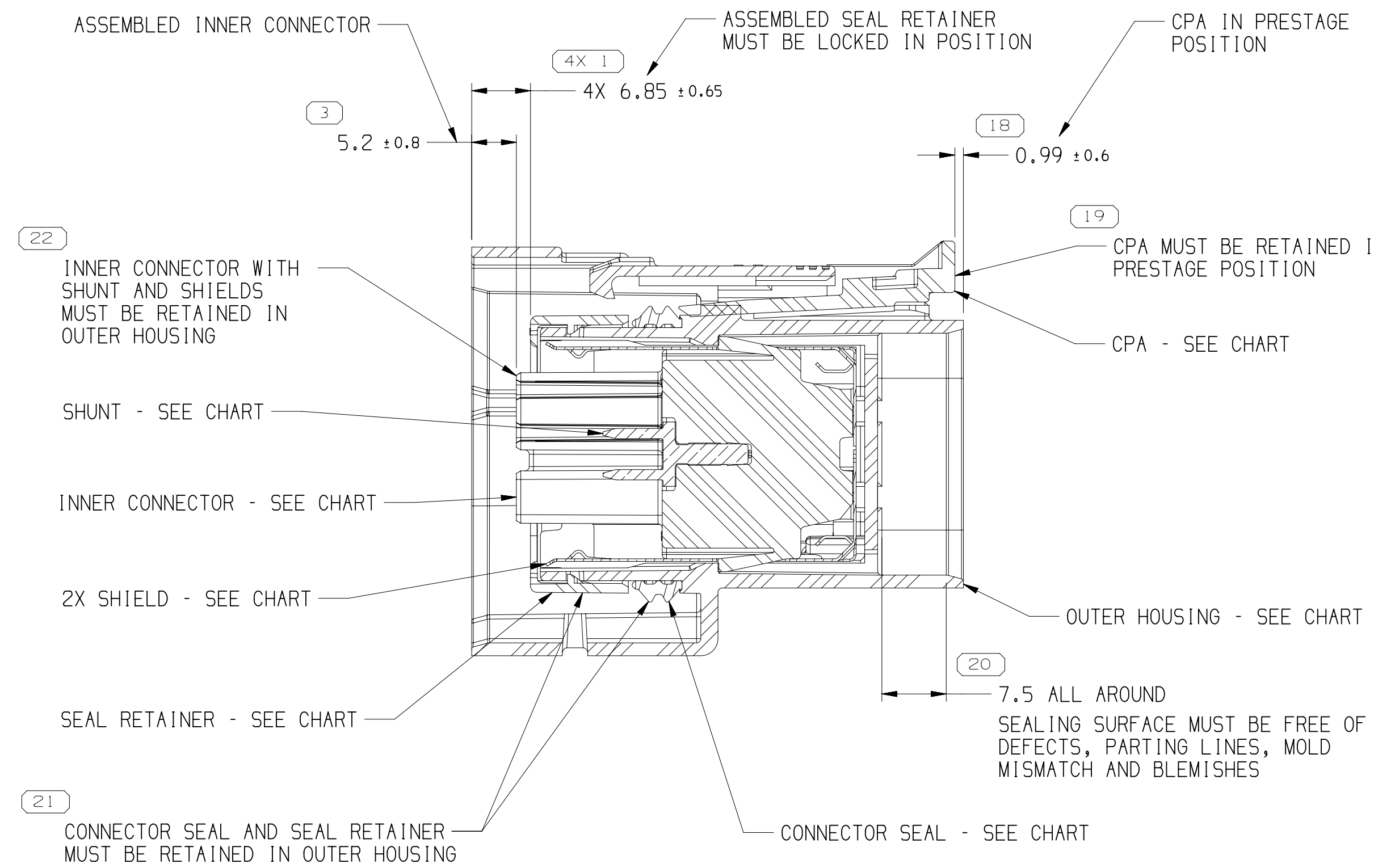
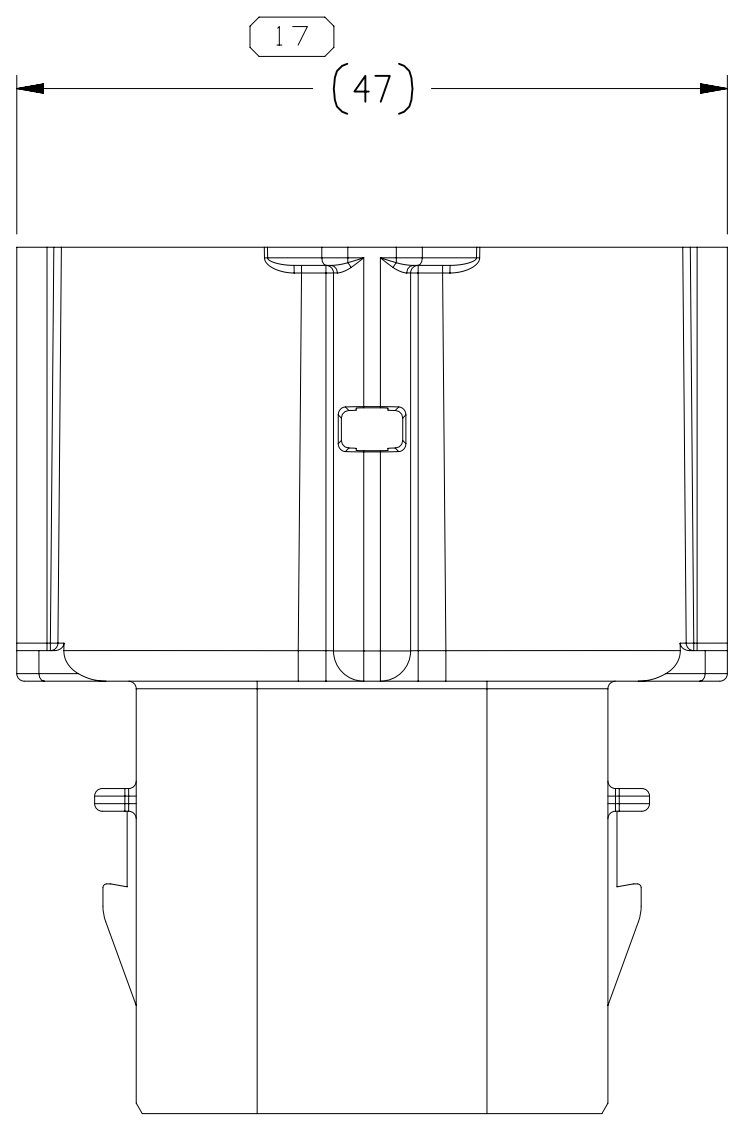
TYPE 103
SAME AS TYPE 101
EXCEPT AS SHOWN



TYPE 104
SAME AS TYPE 101
EXCEPT AS SHOWN



TYPE 101



SECTION A-A

NOTES

- UNLESS OTHERWISE SPECIFIED AND/OR INDICATED:
DIMENSIONS ARE TO FACE OF VIEW SHOWN AND AUTOMATICALLY ROUNDED BY COMPUTER FOR INSPECTION (SEE MATH MODEL FOR PRECISE DIMENSIONS). FOR ALL OTHER DIMENSIONS NOT SHOWN BUT REQUIRED FOR TOOL BUILD, SEE MATH MODEL FOR PRECISE TOOL PATH DATA.
- CONNECTOR DESIGNS PROVIDE THE FOLLOWING MINIMUM CREEPAGE DISTANCES WHEN MATED, AS ASSESSED PER 1EC60664 WITH POLLUTION DEGREE 2 OR 3:
- CAVITIES 1 TO SHIELD OR 2 TO SHIELD : 6.5 mm
- CAVITIES 1 TO 2 : 13.0 mm
- FOR APPLICATION DATA SEE THE INDIVIDUAL APPLICATION DRAWINGS.
- ALL LISTED ASSEMBLIES VALIDATED TO SAE/USCAR-2 R6: 2013-02; SAE/USCAR-37: 2008-08 AUG 2008 (T3, V1, 53)
- FEMALE MTS 0.64 RETENTION FORCE WITH PRIMARY LOCK ONLY IS $\leq 30N$
- PARTS MUST BE FREE OF DUST, DIRT, CARDBOARD FIBER, LOOSE METAL SLIVERS, OR ANY PARTICULATE THAT MAY CAUSE FIT OR FUNCTION CONCERNS.
- PARTS MUST BE PACKAGED IN COMPARTMENTAL CONTAINERS OR TRAYS, ENCLOSED IN CLEAN POLYETHYLENE BAGS.
- ELECTRIC VEHICLE CHARGING AND OTHER HIGH DUTY CYCLE APPLICATIONS CARRYING $> 25A$ REQUIRE THE FOLLOWING:
- MIN 5.0 MM² COPPER CONDUCTORS
- TERMINAL TO CONDUCTOR INTERFACE RESISTANCES ≤ 0.2 MILLIOHMS.
- SOLDERED CRIMPS ARE RECOMMENDED
- TERMINAL TEMPERATURES NEED TO BE MEASURED IN THE VEHICLE APPLICATION TO INSURE T-RISE OVER AMBIENT IS $< 35^{\circ}C$ AT MAXIMUM CONTINUOUS CURRENT.

DRAWING NUMBER									
33300639									
SIZE	SCALE	FRAME NO	SHEET NO	TOTAL SHEETS	REV	INCP			
A1x3	2:1	2 OF 2	1 OF 1	1	09	-			

PART NO	REV	N/P	TYPE	OUTER HOUSING	INNER CONNECTOR	CONNECTOR SEAL	SEAL RETAINER	SHIELD (2-RED'D)	SHUNT	CPA
35050050	01	AH	104	35012463	35056172	35134402	33299862	33318422	33299844	33125204
35050049	01	AH	103	35012462	35056172	35134402	33299862	33318422	33299844	33125204
33300635	01	AH	102	33300626	35056172	35134402	33299862	33318422	33299844	33125204
33300634	01	AH	101	33299843	35056172	35134402	33299862	33318422	33299844	33125204

DIMENSIONAL RANGE (MM)		LIMITS ARE ESTABLISHED								CHART	
FROM	> 0	> 20	> 30	> 70	> 100	> 150	> 200	> 250	> 300		
TO	20	30	70	100	150	200	250	300	400		
TOLERANCE UNLESS OTHERWISE SPECIFIED											
FRACTIONAL DECIMAL ANGULAR											
		±0.15	±0.2	±0.3	±0.4	±0.5	±0.6	±0.8	±1	±1.6	±2

Mouser Electronics

Authorized Distributor

Click to View Pricing, Inventory, Delivery & Lifecycle Information:

[Aptiv:](#)
[33300634](#)