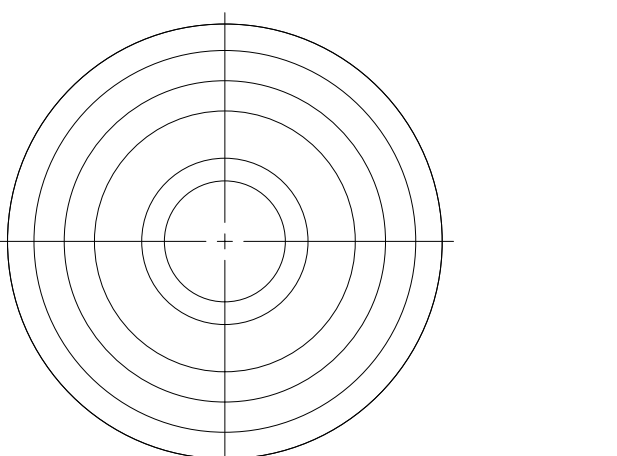
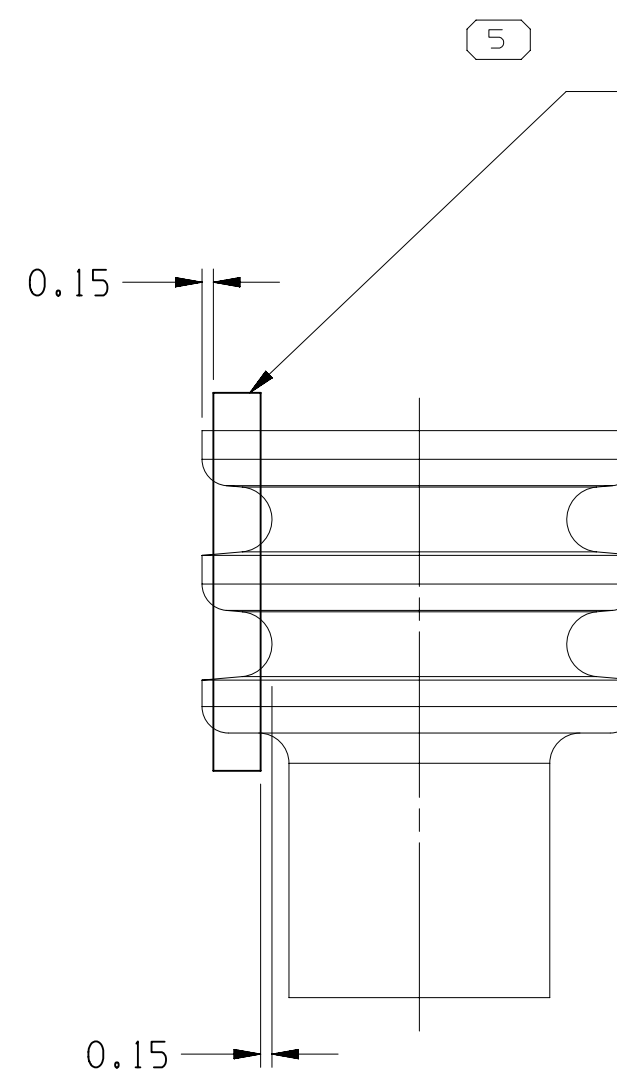
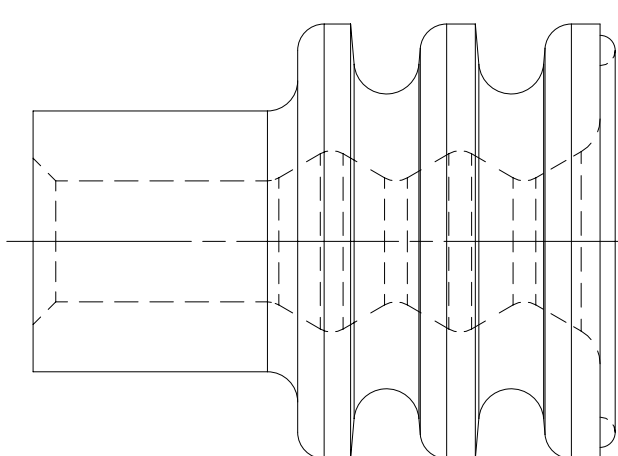


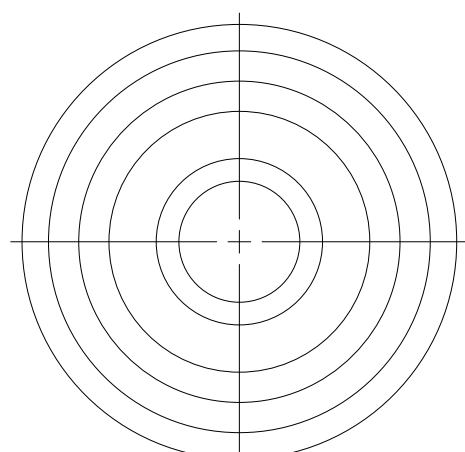
OPTIONAL CONSTRUCTION 1
(ANTI-STICK RING)



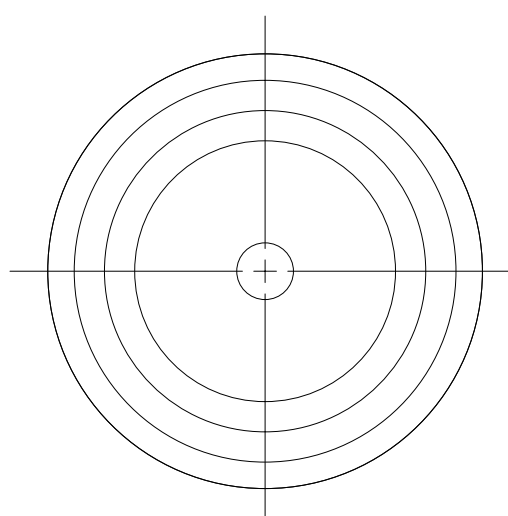
OPTIONAL CONSTRUCTION 2
THIS IS THE PREFERRED CONSTRUCTION FOR NEW
TOOL BUILDS
(ANTI-STICK RING)



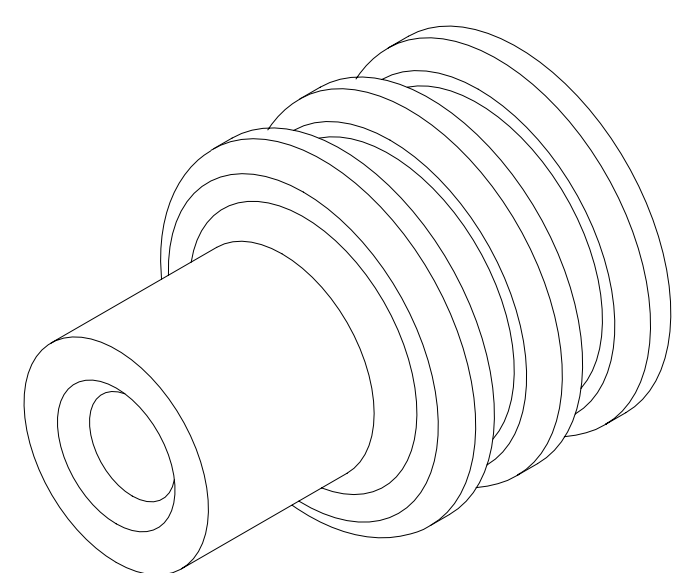
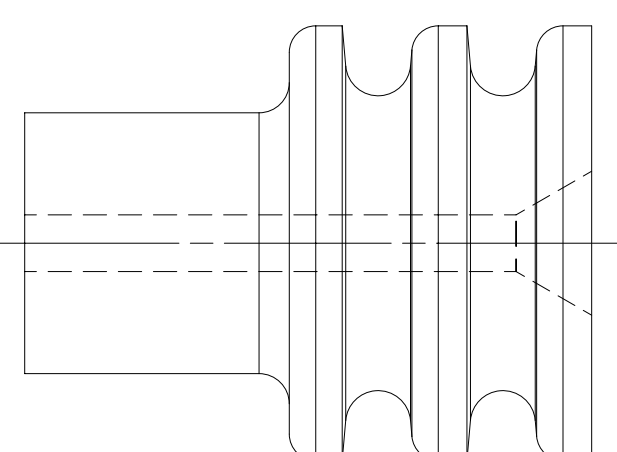
SEALING RIBS MUST BE FREE OF SINKS, VOIDS, KNIT LINES AND FLASH IN THE AREA SHOWN ALL AROUND PART.
SEE VPS A-121 FOR ADDITIONAL INFORMATION.



TYPE 401



TYPE 402
SAME AS TYPE 401
EXCEPT AS SHOWN



SYMBOL DEFINITION				MISSING SYMBOLS	
A DIMENSION WITHOUT AN INSPECTION REPORT SYMBOL DOES NOT REQUIRE INSPECTION. IT MAY BE CONTROLLED ON THE INDIVIDUAL COMPONENT DRAWING.	TOTAL NO OF INSPECTIONS REQUIRED		5	NO MISSING SYMBOL NUMBER	
	LAST NO. USED		5		

MISSING SYMBOLS		DWG STATUS				ZONE	REVISION HISTORY				AUTH	DR	APVD	APVD
NO MISSING SYMBOL NUMBER		DATE	STG	REV	N/P	CHG								
		03DEC99	R	001	-	-		ALL PARTS - REDRAWN TO PD		990009	EOV	COMP	RH	M
		03DEC99	R	002	-	-		15324973-76 & 15324979 - RELEASED		990005	EOV	COMP	RH	M
		17MY00	R	003	-	-		15393249 - RELEASED		000005	MAC	MAC	MM	
		07NOV00	R	004	-	-		15324973-76 & 15324979 - REVISED		202978	JLZ	EAR	JR	
		07NOV00	R	005	-	-		15393249 - REVISED MYLAR & CABLE SEAL ASM COLUMN		204413	EAR	EAR	JR	
		19JAO1	R	006	-	-		UPDATED PDM ATTRIBUTES		205150	JLZ	JLZ	JR	
		09JAO1	R	007	-	-		15393249 - PM009216 WAS PM002196 AND "S" DIM WAS 5.75 +/- 0.15		205774	MAC	MAC	TP	
		29MR01	R	008	-	-		15393249 - MAT'L SPEC WAS PM009216		207669	FMH	FMH	TP	
		06NOV01	R	009	-	-		12048086 - UPDATED PDM ATTRIBUTES		215063	MRL	MRL	DLB	
		10FEO3	R	10	-	-		15324974 & 15324976 - UPDATED PDM ATTRIBUTES		213630	BRB	BRB	MLP	
		05AP04	R	11	-	-		12052925,12052924,15393249,15324979,15324976,15324975,15324973,12186769,12124966,12110213,12089678,12089441,12084193,12048087 AND 12048086 - UPDATED MAT'L SPECS, REMOVED MAT'L SPEC NOTES, NOTE 9 WAS 10 AND REMOVED OLD NOTE 9, REMOVED "Ø" AT DIM PLCS AND "X" COLUMN FROM CHART,ADDED COLOR COLUMN TO CHART		251238	BRB	BRB	MR	
		19NOV04	R	12	-	-		REVISED CHART		261378	MLM	MLM	MR	
		23FEO5	R	13	-	-		12048086,12048087,12084193,12089678,12110213,12186769,12052924,12052925,12124669,12089442 AND 12186770 - ADDED RESTRICTED STATUS: 15324973-4976 AND 15324979 MAT'L SPEC WAS M3466; ADDED NOTES COLUMN TO CHART; NOTE 7 WAS 9, NOTE 8 WAS 7 AND NOTE 9 WAS 8; REMOVED DIM "C" FROM TYPE 402 VIEW		265239	RH	RH	MR	K
		10JNO5	R	14	-	-		REVISED GRAPHICS		269180	GPS	JVM	MPR	
		17FEO6	R	15	-	-		REVISED CHART		277502	MM	MM	MR	
		03MR06	R	16	-	-		15324973-76 & 15324979 - MAT'L SPEC WAS M3469		277946	HCG	JVM	MR	
		17AUG06	R	17	-	-		15324975 - OBSOLETE		273517	CCV	AUG	MR	
		03OCT06	R	18	-	-		ALL ACTIVE PARTS - ADDED SEALING RIBS VIEWS, OVERALL LENGTH LABEL, SEALING RIBS LABEL, ANTI-STICK RING OPTICAL CONSTRUCTION 1 & 2 VIEWS AND DIMS (2 PLCS1; 12084193 & 12124669 - REMOVED RESTRICTED, OPTICAL CONSTRUCTION VIEWS, CONSTRUCTION LINE VIEWS, TYPES 404, 405 & 406 VIEWS AND COLUMNS C,F & G FROM CHART; DIM Ø 3.45 WAS Ø C, DIM Ø 5.75 Ø 0.2 WAS Ø B & DIM 7.5 WAS F, CABLE OD RANGE 1-2 = 1.7 WAS 1-29 = 1.7 AND EQUIVALENT CABLE SEAL COLUMN; 15324973-74, 15324976 & 15324979 MAT'L SPEC M3469 WAS M3466 & ADDED ALTERNATE MAT'L SPEC M3466XXX		285225	JBD	FRG	MPR	J
		11OCT07	R	19	-	-		ALL ACTIVE PARTS - ADDED NOTE 10, USAGE COLUMN AND CHAMFER TO TYPES 401, REVISED TYPE 403 TO 401		402596	RH	RH	MPR	
		30SEP08	R	20	-	-		13713910 & 13713911 - RELEASED		406278	RRR	AGN	RRR	
		01MY09	R	21	-	-		ALL ACTIVE PARTS - UPDATED MAT'L SPEC TO GENERIC CALLOUT, REMOVED ALTERNATE MAT'L SPEC COLUMN FROM CHART; 12186769 - REMOVED NOTE FROM CHART AND 13713910 & 13713911 - OBSOLETE		407894	RTV	AUG	MPR	
		03JUN09	R	22	-	-		13766444 - RELEASED		408127	ECB	AUG	JGS	
		24JUL09	R	23	-	-		ALL PARTS - ADDED VOLUME COLUMN AND REMOVED COLOR COLUMN		408462	ECB	AUG	MPR	S
		30OCT09	R	24	-	-		12084193 - UPDATED PDM ATTRIBUTES		409370	JAR	JAR	JFB	
		15MY10	R	25	-	-		UPDATED PDM ATTRIBUTES		410847	MAL	MAL	JFB	
		15JUN10	R	26	-	-		12052924-25, 12089442, 12124669, 12146011, 12186770 & 13713910 - MOVED TO SHT 6; 12048086-87 & 12089678 - OBSOLETE AND ADDED "REPLACED BY" COLUMN ON CHART		411067	AGM	JAA	MPR	
		12JAN11	R	27	-	-		15324973 - UPDATED PDM ATTRIBUTES		413028	AYH	DMC	GEW	
		13SEP19	R	28	-	-		12089678 - REINSTATED AND ADDED RESTRICTED USAGE COLUMN		444511	J00	JAA	JAF	
		05OCT21	R	29	-	-		ALL ACTIVE PARTS - REVISED "TO IMPROVE SEAL" NOTE		555461	GDH	JAA	ACR	

NOTES

- UNLESS OTHERWISE SPECIFIED AND/OR INDICATED:
DIMENSIONS ARE TO FACE OF VIEW SHOWN AND AUTOMATICALLY ROUNDED BY COMPUTER FOR INSPECTION (SEE MATH MODEL FOR PRECISE DIMENSIONS). FOR ALL OTHER DIMENSIONS NOT SHOWN BUT REQUIRED FOR TOOL BUILD, SEE MATH MODEL FOR PRECISE TOOL PATH DATA.
- SEALING RIBS ARE IDENTICAL, EXCEPT AS SHOWN.
- PARTS NOT MADE ON FLASHLESS MOLDS MUST BE DEFLASHED, WASHED AND DRIED AFTER MOLDING. WASHING SHOULD OCCUR WITHIN 12 HOURS AFTER MOLDING.
- PARTS ARE TO BE PACKAGED IN SEALED PLASTIC BAGS. GROSS WEIGHT INCLUDING CARTON IS NOT TO EXCEED 34 POUNDS.
- PARTS MUST BE MADE FROM VIRGIN MATERIAL ONLY.
- TO IMPROVE SEAL PROCESSING ON SLIPPERY OR SMOOTH CABLE INSULATION, THE APPLICATION ENGINEER MAY SPECIFY THE NEXT SMALLER SEAL SIZE P/N IN PLACE OF THE INDICATED SEAL FOR THE "CABLE O.D." LISTED IN THE CHART.
- DESIGNED FOR 0.8 MM² SOLID CORE DRAIN WIRE Ø 1.002 ±0.007
- PARTS MADE OF FLUOROSILICONE MUST BE POST-CURED FOR 4 HRS AT 400° F.
- THIS PRODUCT IS NOT CATEGORIZED AS AN APPEARANCE ITEM, MINOR IMPERFECTIONS INCLUDING, BUT NOT LIMITED TO, FLOW MARKS, COLOR BLENDISHES, GATE VESTIGE, AND SOFT FLASH THAT DO NOT AFFECT THE FIT, FORM, OR FUNCTION OF THE PART ARE PERMISSIBLE PER EANP-4-3-CS-01-EN.
- P/N 13713911 MUST BE POST-BAKED FOR 4 HOURS AT 400° F.
- SEE 12010295 SHEET 6 FOR MYLAR ASSEMBLY INFORMATION.

PART NO	REV	N/P	CABLE SEAL	MATERIAL SPECIFICATION AND COLOR	TYPE	CABLE O.D. ±0.05 SEE NOTE #6	CAVITY ID	EQUIVALENT CABLE SEAL	NOTES	VOLUME	REPLACED BY	RESTRICTED USAGE
13766444	01	AB	-	SILICONE METHYL/VINYL GRAY	401	2.15-1.6	5.2	15324979	-	0.099	-	-
13713911	01	AA	-	SILICONE METHYL/VINYL GREEN	401	2.85-2.03	5.2	-	SEE NOTE 10	0.092	-	-
15393249	01	AK	-	FLUOROSILICONE METHYL/VINYL GREEN	401	2.15-1.6	5.2	-	SEE NOTE 8	0.099	-	-
15324979	01	AK	-	SILICONE METHYL/VINYL GRAY	401	2.15-1.6	5.2	12186769	-	0.099	-	-
15324976	01	AK	-	SILICONE METHYL/VINYL WHITE	401	2.15-1.6	5.2	12089678	-	0.099	-	-
15324975	01	AF	-	SILICONE METHYL/VINYL OCHER	402	1.009-0.995	5.2	-	SEE NOTE 7	0.109	-	-
15324974	01	AL	-	SILICONE METHYL/VINYL BLUE	401	1.7-1.29	5.2	12048087	-	0.105	-	-
15324973	01	AL	-	SILICONE METHYL/VINYL REDDISH BROWN	401	2.85-2.03	5.2	12048086	-	0.092	-	-
12186769	B10	-	-	SILICONE METHYL/VINYL GRAY	401	2.15-1.6	5.2	15324979	-	0.099	-	-
12129926	B8	-	-	FLUOROSILICONE METHYL/VINYL ORANGE	401	1.7-1.29	5.2	-	SEE NOTE 8	0.105	-	-
12110213	B9	-	-	FLUOROCARBON BLUE	401	2.65-1.85	5.2	-	-	0.099	-	-
12089678	A12	-	-	SILICONE METHYL/VINYL WHITE	401	2.15-1.6	5.2	15324976	-	0.099	-	RESTRICTED
12089441	B	-	-	SILICONE METHYL/VINYL YELLOW	401	2.15-1.6	5.2	-	-	0.099	-	-
12084193	A9	-	-	SILICONE METHYL/VINYL TAN	402	1.009-0.995	5.2	-	SEE NOTE 7	0.109	-	-
12048087	O2	AH	-	SILICONE METHYL/VINYL BLUE	401	1.7-1.29	5.2	15324974	-	0.105	15324974	-
12048086	O2	AG	-	SILICONE METHYL/VINYL REDDISH BROWN	401	2.85-2.03	5.2	15324973	-	0.092	15324973	-

		3		PROCESS SENSITIVE DIMENSION	
				DIMENSIONS ENCLOSED IN () INDICATE REFERENCE DIMENSIONS AND NO TOLERANCE LIMITS ARE ESTABLISHED	
DIMENSIONAL RANGE (MM)				CHART E	
FROM	TO	FROM	TO	FROM	TO
0	20	20	30	30	40
20	30	30	40	40	50
30	40	40	50	50	60
40	50	50	60	60	70
50	60	60	70	70	80
60	70	70	80	80	90
70	80	80	90	90	100
80	90	90	100	100	110
90	100	100	110	110	120
100	110	110	120	120	130
110	120	120	130	130	140
120	130	130	140	140	150
130	140	140	150	150	160
140	150	150	160	160	170
150	160	160	170	170	180
160	170	170	180	180	190
170	180	180	190	190	200
180	190	190	200	200	210
190	200	200	210	210	220
200	210	210	220	220	230
210	220	220	230	230	240
220	230	230	240	240	250
230	240	240	250	250	260
240	250	250	260	260	270
250	260	260	270	270	280
260	270	270	280	280	290
270	280	280	290	290	300
280	290	290	300	300	310
290	300	300	310	310	320
300	310	310	320	320	330
310	320	320	330	330	340
320	330	330	340	340	350
330	340	340	350	350	360
340	350	350	360	360	370
350	360	360	370	370	380
360	370	370	380	380	390
370	380	380	390	390	400
380	390	390	400	400	410
390	400	400	410	410	420
400	410	410	420	420	430
410	420	420	430	430	440
420	430	430	440	440	450
430	440	440	450	450	460
440	450	450	460	460	470
450	460	460	470	470	480
460	470	470	480	480	490
470	480	480	490	490	500
480	490	490	500	500	510
490	500	500	510	510	520
500	510	510	520	520	530
510	520	520	530	530	540
520	530	530	540	540	550
530	540	540	550	550	560
540	550	550	560	560	570
550	560	560	570	570	580
560	570	570	580	580	590
570	580	580	590	590	600
580	590	590	600	600	610
590	600	600	610	610	620
600	610	610	620	620	630
610	620	620	630	630	640
620	630	630	640	640	650
630	640	640	650	650	660
640	650	650	660	660	670
650	660	660	670	670	680
660	670	670	680	680	690
670	680	680	690	690	700
680	690	690	700	700	710
690	700	700	710	710	720
700	710	710	720	720	730
710	720	720	730	730	740
720	730	730	740	740	750
730	740	740	750	750	760
740	750	750	760	760	770
750	760	760	770	770	780
760	770	770	780	780	790
770	780	780	790	790	800
780	790	790	800	800	810
790	800	800	810	810	820
800	810	810	820	820	830
810	820	820	830	830	840
820	830	830	840	840	850
830	840	840	850	850	860
840	850	850	860	860	870
850	860	860	870	870	880
860	870	870	880	880	890
870	880	880	890	890	900
880	890	890	900	900	910
890	900	900	910	910	920
900	910	910	920	920	930
910	920	920	930	930	940
920	930	930	940	940	950
930	940	940	950	950	960
940	950	950	960	960	970
950	960	960	970	970	980
960	970	970	980	980	990
970	980	980	990	990	1000
980	990	990	1000	1000	1010
990	1000	1000	1010	1010	1020
1000	1010	1010	1020	1020	1030
1010	1020	1020	1030	1030	1040
1020	1030	1030	1040	1040	1050
1030	1040	1040	1050	1050	1060
1040	1050	1050	1060	1060	1070
1050	1060	1060	1070	1070	1080
1060	1070	1070	1080	1080	1090
1070	1080	1080	1090	1090	1100
1080	1090	1090	1100	1100	1110
1090	1100	1100	1110	1110	1120
1100	1110	1110	1120	1120	1130
1110	1120	1120	1130	1130	1140
1120	1130	1130	1140	1140	1150
1130	1140	1140	1150	1150	1160
1140	1150	1150	1160	1160	1170
1150	1160	1160	1170	1170	1180
1160	1170	1170	1180	1180	1190
1170	1180	1180	1190	1190	1200
1180	1190	1190	1200	1200	1210
1190	1200	1200	1210	1210	1220
1200	1210	1210	1220	1220	1230
1210	1220	1220	1230	1230	1240
1220	1230	1230	1240	1240	1250
1230	1240	1240	1250	1250	1260
1240	1250	1250	1260	1260	1270
1250	1260	1260	1270	1270	1280
1260	1270	1270	1280	1280	1290
1270	1280	1280	1290	1290	1300
1280	1290	1290	1300	1300	1310
1290	1300	1300	1310	1310	1320
1300	1310	1310	1320	1320	1330
1310	1320	1320	1330	1330	1340
1320	1330	1330	1340	1340	1350
1330	1340	1340	1350	1350	1360
1340	1350	1350	1360	1360	1370
1350	1360	1360	1370	1370	1380
1360	1370	1370	1380	1380	1390
1370	1380	1380	1390	1390	1400
1380	1390	1390	1400	1400	1410
1390	1400	1400	1410	1410	1420
1400	1410	1410	1420	1420	1430
1410	1420	1420	1430	1430	1440
1420	1430	1430	1440	1440	1450
1430	1440	1440	1450	1450	1460
1440	1450	1450	1460	1460	1470
1450	1460	1460	1470	1470	1480
1460	1470	1470	1480	1480	1490
1470	1480	1480	1490	1490	1500
1480	1490	1490	1500	1500	1510
1490	1500	1500	1510	1510	1520
1500	1510	1510	1520	1520	1530
1510	1520	1520	1530	1530	1540
1520	1530	1530	1540	1540	1550
1530	1540	1540	1550	1550	1560
1540	1550	1550	1560	1560	1570
1550	1560	1560	1570	1570	1580
1560	1570	1570	1580	1580	1590
1570	1580	1580	1590	1590	1600
1580	1590	1590	1600	1600	1610
1590	1600	1600	1610	1610	1620
1600	1610	1610	1620	1620	1630
1610	1620	1620	1630	1630	1640
1620	1630	1630	1640	1640	1650
1630	1640	1640	1650	1650	1660
1640	1650	1650	1660	1660	1670
1650	1660	1660	1670	1670	1680
1660	1670	1670	1680	1680	1690
1670	1680	1680	1690	1690	1700
1680	1690	1690	1700	1700	1710
1690	1700	1700	1710	1710	1720
1700	1710	1710	1720	1720	1730
1710	1720	1720	1730	1730	1740
1720	1730	1730	1740	1740	1750
1730	1740	1740	1750	1750	1760
1740	1750	1750	1760	1760	1770
1750	1760	1760	1770	1770	1780
1760	1770	1770	1780	1780	1790
1770	1780	1780	1790	1790	1800
1780	1790	1790	1800	1800	1810
1790	1800	1800	1810	1810	1820
1800	1810	1810	1820	1820	1830
1810	1820	1820	1830	1830	1840
1820	1830	1830	1840	1840	1850
1830	1840	1840	1850	1850	1860
1840	1850	1850	1860	1860	1870
1850	1860	1860	1870	1870	1880
1860	1870	1870	1880	1880	1890
1870	1880	1880	1890	1890	1900
1880	1890	1890	1900	1900	1910
1890	1900	1900	1910	1910	1920
1900	1910	1910	1920	1920	1930
1910	1920	1920	1930	1930	1940
1920	1930	1930	1940	1940	1950
1930	1940	1940	1950	1950	1960
1940	1950	1950	1960	1960	1970
1950	1960	1960	1970	1970	1980
1960	1970	1970	1980	1980	1990
1970	1980	1980	1990	1990	2000
1980	1990	1990	2000	2000	2010
1990	2000	2000	2010	2010	2020
2000	2010	2010	2020	2020	2030
2010	2020	2020	2030	2030	2040
2020	2030	2030	2040	2040	2050
2030	2040	2040	2050	2050	2060
2040	2050	2050	2060	2060	2070
2050	2060	2060	2070	2070	2080
2060	2070	2070	2080	2080	2090
2070	2080	2080	2090	2090	2100
2080	2090	2090	2100	2100	2110
2090	2100	2100	2110	2110	2120
2100	2110	2110	2120	2120	2130
2110	2120	2120	2130	2130	2140
2120	2130	2130	2140	2140	2150
2130	2140	2140	2150	2150	2160
2140	2150	2150	2160	2160	2170
2150	2160	2160	2170	2170	2180
2160	2170	2170	2180	2180	2190
2170	2180	2180	2190	2190	2200
2180	2190	2190	2200	2200	2210
2190	2200	2200	2210	2210	2220
2200	2210	2210	2220	2220	2230
2210	2220	2220	2230	2230	2240
2220	2230	2230			

Mouser Electronics

Authorized Distributor

Click to View Pricing, Inventory, Delivery & Lifecycle Information:

[Aptiv:](#)

[15393249](#)