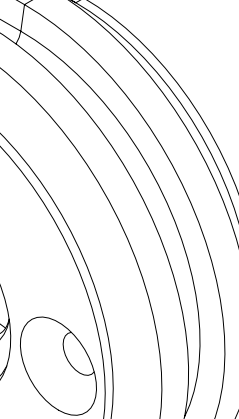
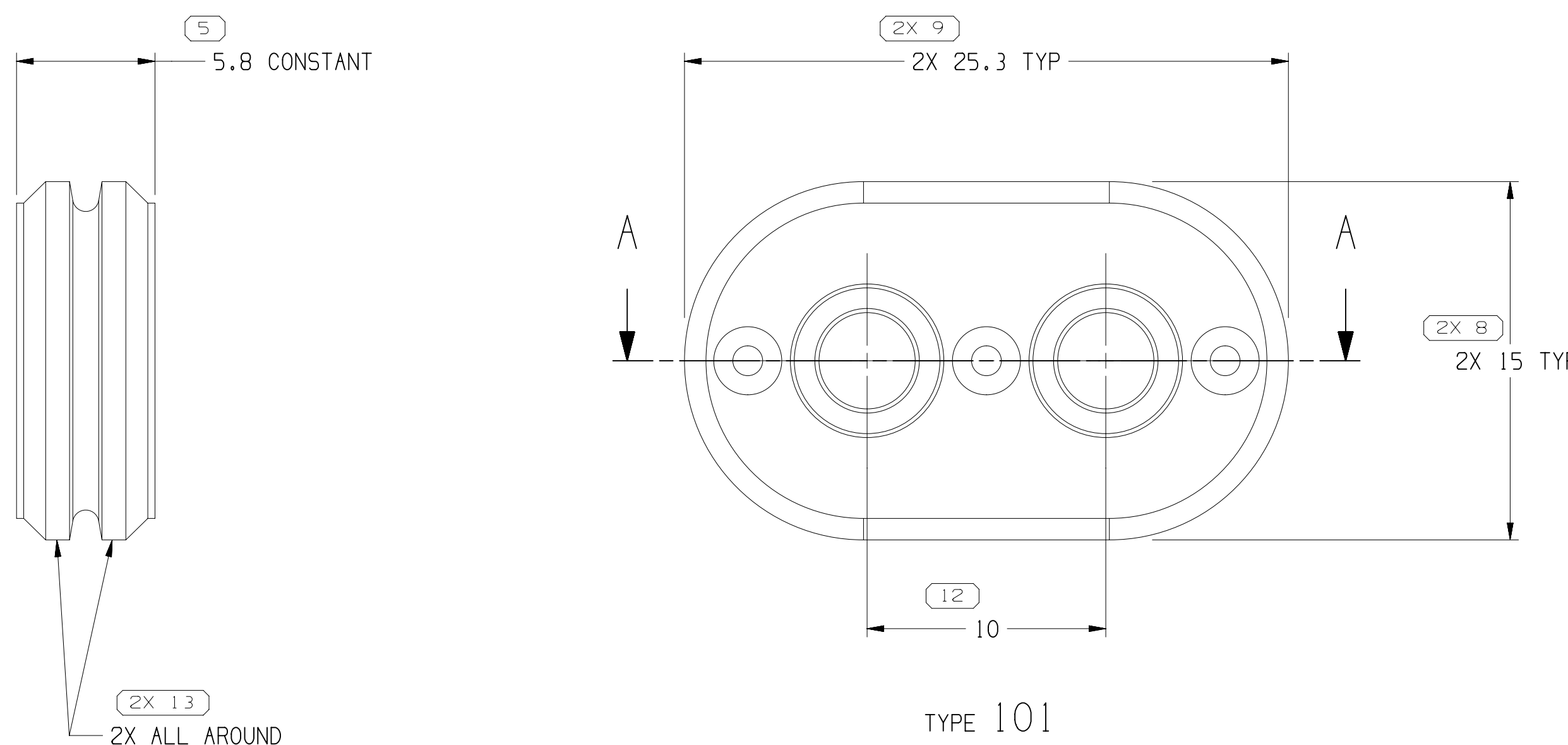
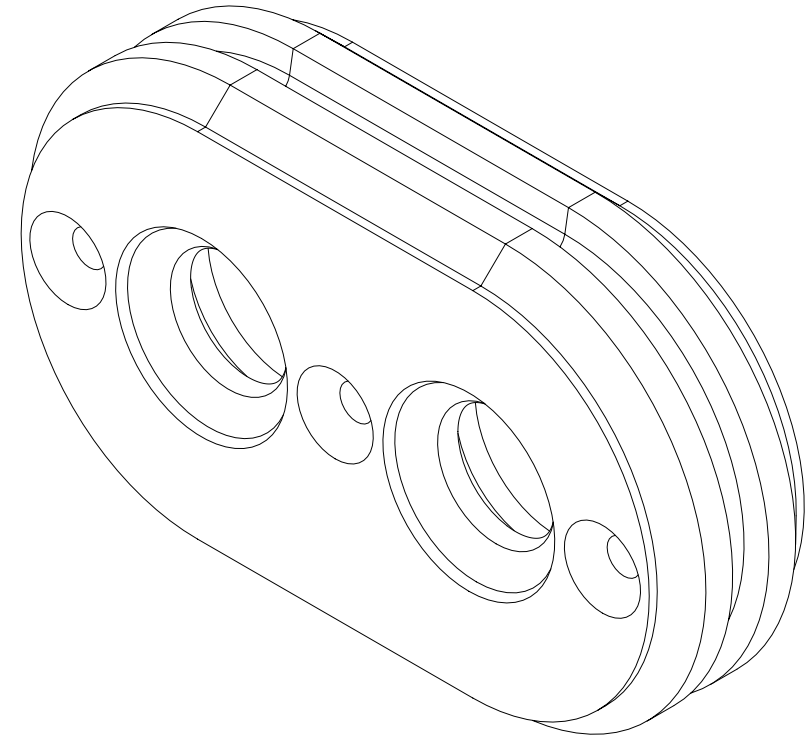
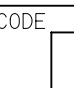


MISSING SYMBOLS		DWG STATUS				ZONE	REVISION HISTORY		AUTH	DR	APPROVED 1 2	
10		DATE	REV	N/P	CHG							
	02JN10	R	01	-	-	ALL PARTS-CREATED PART DRAWING	410951	LLJ	LLJ	NL		
	22JL10	R	02	-	-	UPDATED PDM ATTRIBUTES	411376	LLJ	LLJ	NL	M	
	23MY11	R	03	-	-	ADDED TYPES 104-106 & DIMS 16-21.	414306	LLJ	LLJ	NL		
	25JN12	R	04	-	-	ALL PARTS- ADDED APPLICABLE SECONDARY LOCK TO CHART.	418535	LLJ	LLJ	NL		
	05DE12	R	05	-	-	15513451- 15513452, 15513453 & 15513454 - RELEASED AS INACTIVE	420314	JOR	JRW	JOR		
	19MR13	R	06	-	-	13897943, 13897973, 13897974 & 15513454 - JACKETED CABLE TYPE "WAS "SAE"	421779	JOR	AMS	JOR		
	02AU13	R	07	-	-	15513451-54 - UPDATED PART AVAILABILITY	423447	JOR	AMS	JOR		
	08JL15	R	08	-	-	13824774-76 & 13897973 - ADDED REPLACED BY COLUMN. 13824775-76 & 13897973 OBSOLETE AND 13824774 - RESTRICTED	427663	JVR	JVM	YVH	L	
	20JL15	R	09	-	-	13897943, 13897974 & 15513451-54 - ADDED MUST BE MEASURED NOTE	430019	ABH	JVM	YVH		
	11DE18	R	10	-	-	ALL ACTIVE PARTS - REMOVED ISO/SAE DESIGNATION FROM "CABLE SIZE" CHART COLUMN	441757	JLL	JAA	TAV		
	03AU20	R	11	-	-	15513451 - CABLE OD RANGE 6.1-5.4 WAS 5.66-5.4	552136	CSD	CSD	MNC		
	19MY22	R	12	-	-	15513452 - CABLE OD RANGE 5.4-4.73 WAS 4.93-4.73; 15513453 - CABLE OD RANGE 4.9-4.17 WAS 4.37-4.17; ALL ACTIVE PARTS - REMOVE SHIELDED, JACKETED CABLE SIZE & APPLICABLE SECONDARY LOCK OR EQUIVALENT COLUMN	557459	ESG	JAA	TAG	K	
09MR23	R	13	-	-	35759272 - RELEASED	559826	JGO	GLG	LAA			



- NOTES
1. UNLESS OTHERWISE SPECIFIED AND/OR INDICATED:

DIMENSIONS ARE TO FACE OF VIEW SHOWN AND
AUTOMATICALLY ROUNDED BY COMPUTER FOR INSPECTION
(SEE MATH MODEL FOR PRECISE DIMENSIONS). FOR ALL
OTHER DIMENSIONS NOT SHOWN BUT REQUIRED FOR TOOL
BUILD, SEE MATH MODEL FOR PRECISE TOOL PATH DATA.
 2. PARTS SHOWN ON THIS DRAWING ACCEPT ASSEMBLIES SHOWN
ON TAXI 13830164.
 3. WHEN INSTALLING COMPONENT ON WIRE, DOW 550 PROCESSING AGENT
MAY BE APPLIED TO THE OD OF THE WIRE TO REDUCE SEAL TO WIRE
SLIDING FORCES.
 4. SILICONE SEALING SURFACES MUST BE FREE OF DEFECTS, PARTING
LINES, MOLD MISMATCH AND KNIT LINES, ETC.
 5. THIS PRODUCT IS NOT CATEGORIZED AS AN APPEARANCE ITEM, MINOR
IMPERFECTIONS INCLUDING, BUT NOT LIMITED TO, FLOW MARKS, COLOR
BLEMISHES, GATE VESTIGE, AND SOFT FLASH THAT DO NOT AFFECT THE
FIT, FORM, OR FUNCTION OF THE PART ARE PERMISSIBLE PER DPNP-4.7-CS-01.
 6. PART(S) RESTRICTED FOR USE IN YAZAKI NORTH AMERICA;
TESLA MOTORS; MULTIPLE; W242.
REFER TO CHART FOR SPECIFIC RESTRICTED PART NUMBERS.

<p>A LINE DRAWING THROUGH A PART NUMBER INDICATES THAT PHYSICAL PARTS ARE NOT AVAILABLE FOR ORDERING.</p> <p>PART NUMBERS THAT DO NOT HAVE A LINE PRESENT INDICATE THAT PHYSICAL PARTS ARE AVAILABLE FOR ORDERING.</p> <p>CONTACT APPLIED SALES TO ASSURE AVAILABILITY OF PARTS.</p>	
<p>DWG TYPE</p> <p style="text-align: center;">PART DRAWING</p>	
<p>STYLE</p>	
<p>VOLUME (CM)</p>	<p>DISTR CODE</p> <div style="text-align: center;">  </div>
<p>UNLESS OTHERWISE SPECIFIED</p> <p>THIS DOCUMENT IS IN ACCORDANCE WITH ASME Y14.5M-1994 DIMENSIONS BY THE FOLLOWING DIMENSIONING AND TOLERANCING ADDENDUM (2001). SEPARATE PATTERNS OF FEATURES MAY BE GAUGED SEPARATELY REGARDLESS OF DATUM REFERENCES.</p>	
<p>ALL DIMENSIONS ARE IN MILLIMETERS</p>	
<p>REFERENCE</p>	

• APTIV •

CONNECTION SYSTEMS

WARREN, OH

COPYRIGHT 2010 APTIV, ALL RIGHTS RESERVED.

THIS DRAWING IS THE PROPERTY OF APTIV AND CONTAINS APTIV CONFIDENTIAL INFORMATION. THE REPRODUCTION, DISTRIBUTION AND UTILIZATION OF THIS DOCUMENT OR ITS RELATED CAD DATA, AS WELL AS COMMUNICATION OF ANY CONTENT TO OTHERS, WITHOUT EXPRESS AUTHORIZATION, IS PROHIBITED.

		DATE
DR		
APV01	L. JONES	02JUN10
APV02	L. JONES	02JUN10
APV03	N. LIPTAK	02JUN10
APV04		
APV05		

SUBSTANCES OF CONCERN AND RECYCLED
CONTENT PER APTIV 10949001

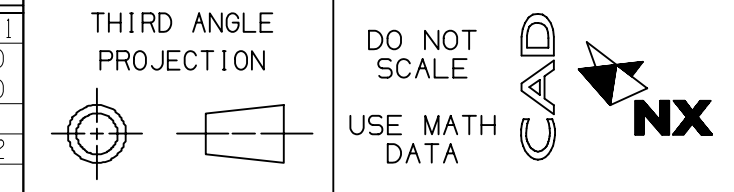
**MATERIAL
SEE CHART**

DRAWING NAME: TAXI SEAL CBL/CONN

DRAWING NUMBER: 13830145

SIZE	SCALE	FRAME NO	SHEET NO	STG	REV	N/A
A	5:1	1 OF 1	1 OF 1	R	13	-
2				1		

	5	PROCESS SENSITIVE DIMENSION																																																					
DIMENSIONS ENCLOSED IN () INDICATE REFERENCE DIMENSIONS AND NO TOLERANCE LIMITS ARE ESTABLISHED																																																							
<table style="width: 100%; border-collapse: collapse;"> <tr> <th colspan="2" style="text-align: left;">DIMENSIONAL RANGE (MM)</th> <th colspan="6" style="text-align: right;">CHART E</th> </tr> <tr> <th style="text-align: left;">FROM</th> <th style="text-align: left;">TO</th> <th style="text-align: center;">> 0</th> <th style="text-align: center;">> 10</th> <th style="text-align: center;">> 30</th> <th style="text-align: center;">> 70</th> <th style="text-align: center;">> 150</th> <th style="text-align: center;">> 250</th> <th style="text-align: center;">> 300</th> </tr> <tr> <td></td> <td></td> <td style="text-align: center;">0</td> <td style="text-align: center;">10</td> <td style="text-align: center;">30</td> <td style="text-align: center;">70</td> <td style="text-align: center;">150</td> <td style="text-align: center;">250</td> <td style="text-align: center;">300</td> </tr> <tr> <td colspan="2"></td> <td colspan="7" style="text-align: center;">TOLERANCE UNLESS OTHERWISE SPECIFIED</td> </tr> <tr> <td></td> <td></td> <td style="text-align: center;">±0.15</td> <td style="text-align: center;">±0.2</td> <td style="text-align: center;">±0.3</td> <td style="text-align: center;">±0.4</td> <td style="text-align: center;">±0.5</td> <td style="text-align: center;">±0.6</td> <td style="text-align: center;">±1</td> </tr> <tr> <td colspan="9" style="text-align: center;">ANGULAR TOLERANCE .12°</td> </tr> </table>			DIMENSIONAL RANGE (MM)		CHART E						FROM	TO	> 0	> 10	> 30	> 70	> 150	> 250	> 300			0	10	30	70	150	250	300			TOLERANCE UNLESS OTHERWISE SPECIFIED									±0.15	±0.2	±0.3	±0.4	±0.5	±0.6	±1	ANGULAR TOLERANCE .12°								
DIMENSIONAL RANGE (MM)		CHART E																																																					
FROM	TO	> 0	> 10	> 30	> 70	> 150	> 250	> 300																																															
		0	10	30	70	150	250	300																																															
		TOLERANCE UNLESS OTHERWISE SPECIFIED																																																					
		±0.15	±0.2	±0.3	±0.4	±0.5	±0.6	±1																																															
ANGULAR TOLERANCE .12°																																																							



Mouser Electronics

Authorized Distributor

Click to View Pricing, Inventory, Delivery & Lifecycle Information:

[Aptiv:](#)

[15513452](#)