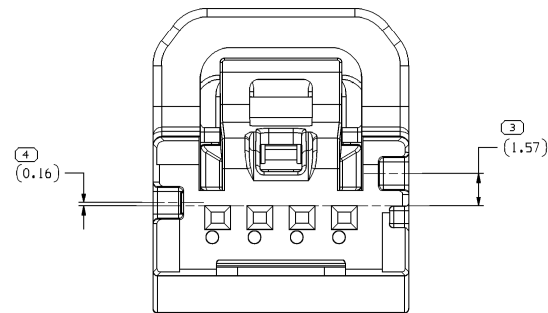
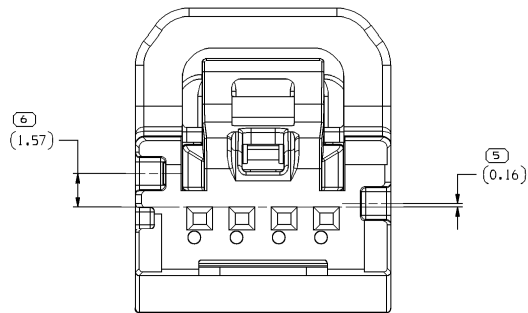


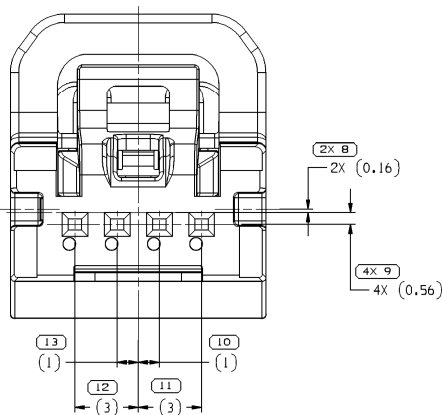
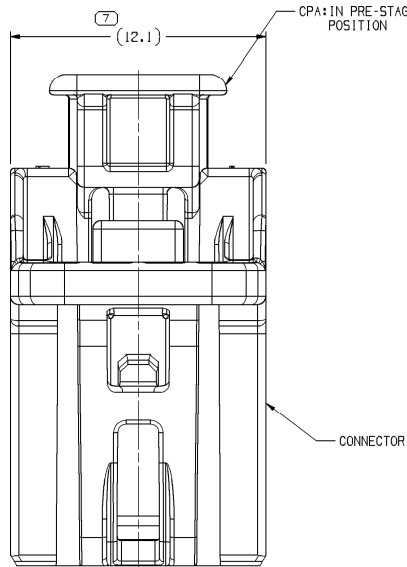
TYPE 102
SAME AS TYPE 101
EXCEPT AS SHOWN



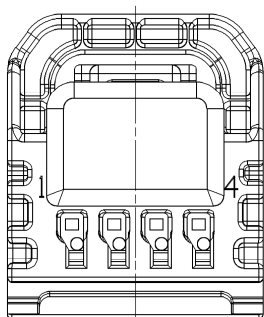
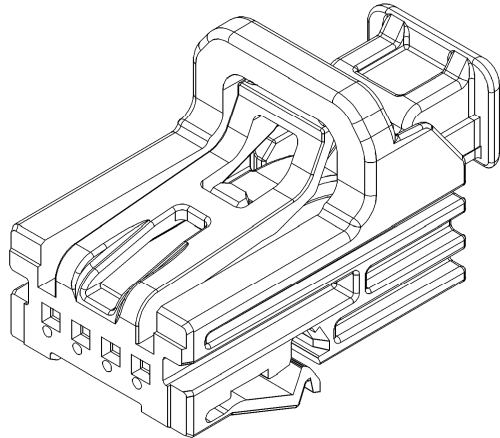
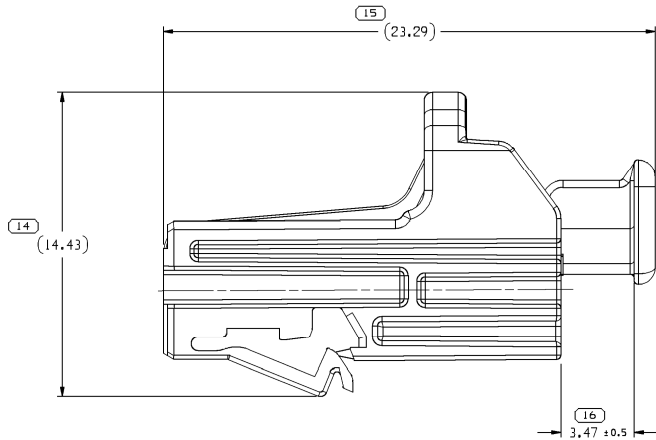
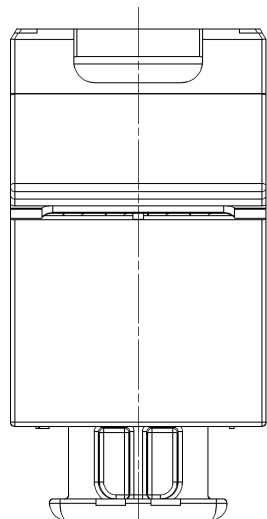
TYPE 103
SAME AS TYPE 101
EXCEPT AS SHOWN



TYPE 104
SAME AS TYPE 101
EXCEPT AS SHOWN



TYPE 101



SYMBOL DEFINITION
A DIMENSION WITHOUT AN INSPECTION REPORT SYMBOL
DOES NOT REQUIRE INSPECTION. IT MAY BE
CONTROLLED ON THE INDIVIDUAL COMPONENT DRAWING.

TOTAL NO OF INSPECTIONS REQUIRED	20
LAST NO. USED	16

MISSING SYMBOLS	NO MISSING SYMBOL NUMBER

DWG STATUS					ZONE	REVISION HISTORY	AUTH	DR	APR	APV	2
DATE	STG	REV	N/P	CHG							
18SE15	U	01	-	-		WAS PE313782	430642	MB	MB	JDD	
14OC15	R	02	-	-		UPDATED PDM ATTRIBUTES, DIM 7 WAS 12.63, DIM 14 WAS 11.23, DIM 15 WAS 20.38	431093	JHG	JHG	JDD	
24MR16	R	03	-	-		CONNECTORS REVISED TO REV 03	432277	MB	MB	JDD	
10AU16	R	04	-	-		ALL PARTS - CPA WAS 332B3037, DIM #7 WAS 12.25, DIM #14 WAS 12.23 & DIM 15 WAS 20.61, ADDED DIM (1) PLOI & PSD AND UPDATED CONNECTOR TO LATEST: 332B3024 - UPDATED PART AVAILABILITY	433911	DCM	DCM	MAA	
12JUN17	R	05	-	-		ALL PARTS - REVISION 03AA WAS 04 FOR AUTH NUMBER 433911	436841	NKS	NKS	EH	
16AU17	R	06	-	-		ALL PARTS - REVISED GRAPHICS	437478	NKS	NKS	EH	
06OC17	R	07	-	-		ALL PARTS - UPDATED PDM ATTRIBUTES	437951	NKS	NKS	EH	
26FE18	R	08	-	-		ALL PARTS - PROCESS SENSITIVE DIMENSION WAS #16 AND ADDED "CP POSITION" NOTE	439114	SM	SM	EH	
20AP18	R	09	-	-		ALL PARTS - UPDATED PART AVAILABILITY	439592	NKS	NKS	EH	
22JUN18	R	10	-	-		ALL PARTS - REVISED NOTE #03	440066	NKS	NKS	EG	

NOTES

- UNLESS OTHERWISE SPECIFIED AND/OR INDICATED:
DIMENSIONS ARE TO FACE OF VIEW SHOWN AND
AUTOMATICALLY ROUNDED BY COMPUTER FOR INSPECTION
(SEE MATH MODEL FOR PRECISE DIMENSIONS). FOR ALL
OTHER DIMENSIONS NOT SHOWN BUT REQUIRED FOR TOOL
BUILD, SEE MATH MODEL FOR PRECISE TOOL PATH DATA.
- WHEN PARTS ARE SHIPPED THEY MUST BE PACKED IN PLASTIC BAGS
OR SHIPPING CONTAINERS MUST BE LINED WITH PLASTIC LINERS.
BAGS OR LINERS MUST BE SEALED TO AVOID FOREIGN MATTER.
- SEALING CODE 1 - DESIGN WILL MEET REQUIREMENTS OF SAE/USCAR-6
UNSEALED CONNECTOR SYSTEM ENVIRONMENTAL TEST
FLOWCHART
- THIS PART IS NOT CONTROLLED FOR AUTOMATIC FEEDING.
- FOR APPLICATION DATA SEE THE INDIVIDUAL APPLICATION DRAWINGS.

332B3028	04	AD	104	332B3021	33380638
332B3026	04	AD	103	332B3020	33380638
332B3025	04	AD	102	332B3019	33380638
332B3024	04	AD	101	332B3017	33380638
PART NO	REV	N/P	TYPE	CONN	CPA

DIMENSIONAL RANGE (MM)										CHART	
FROM	> 0	> 20	> 30	> 70	> 100	> 150	> 200	> 250	> 300		
TO	20	30	70	100	150	200	250	300	400		
TOLERANCE UNLESS OTHERWISE SPECIFIED											
	±0.15	±0.2	±0.3	±0.4	±0.5	±0.6	±0.8	±1	±1.5		
ANGULARITY TOLERANCE											

Mouser Electronics

Authorized Distributor

Click to View Pricing, Inventory, Delivery & Lifecycle Information:

[Aptiv:](#)

[33283028](#)