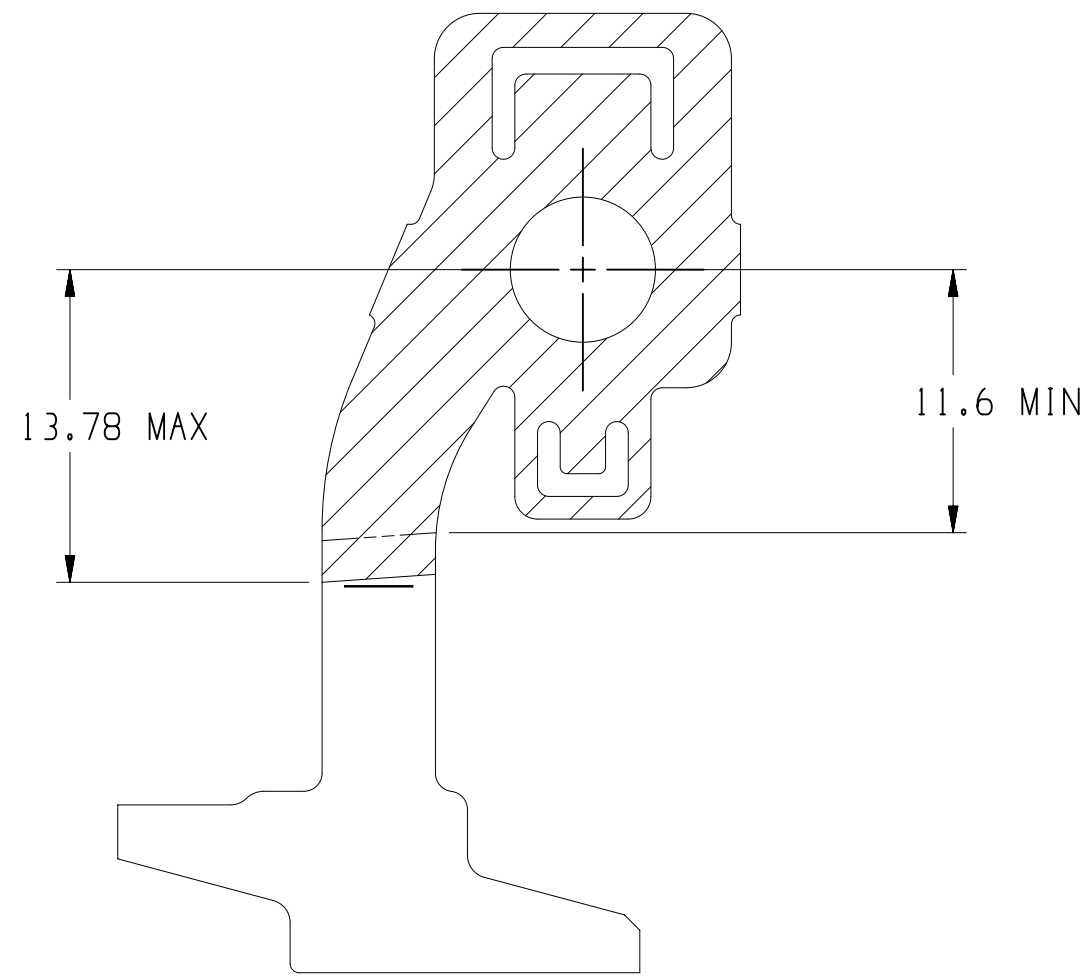
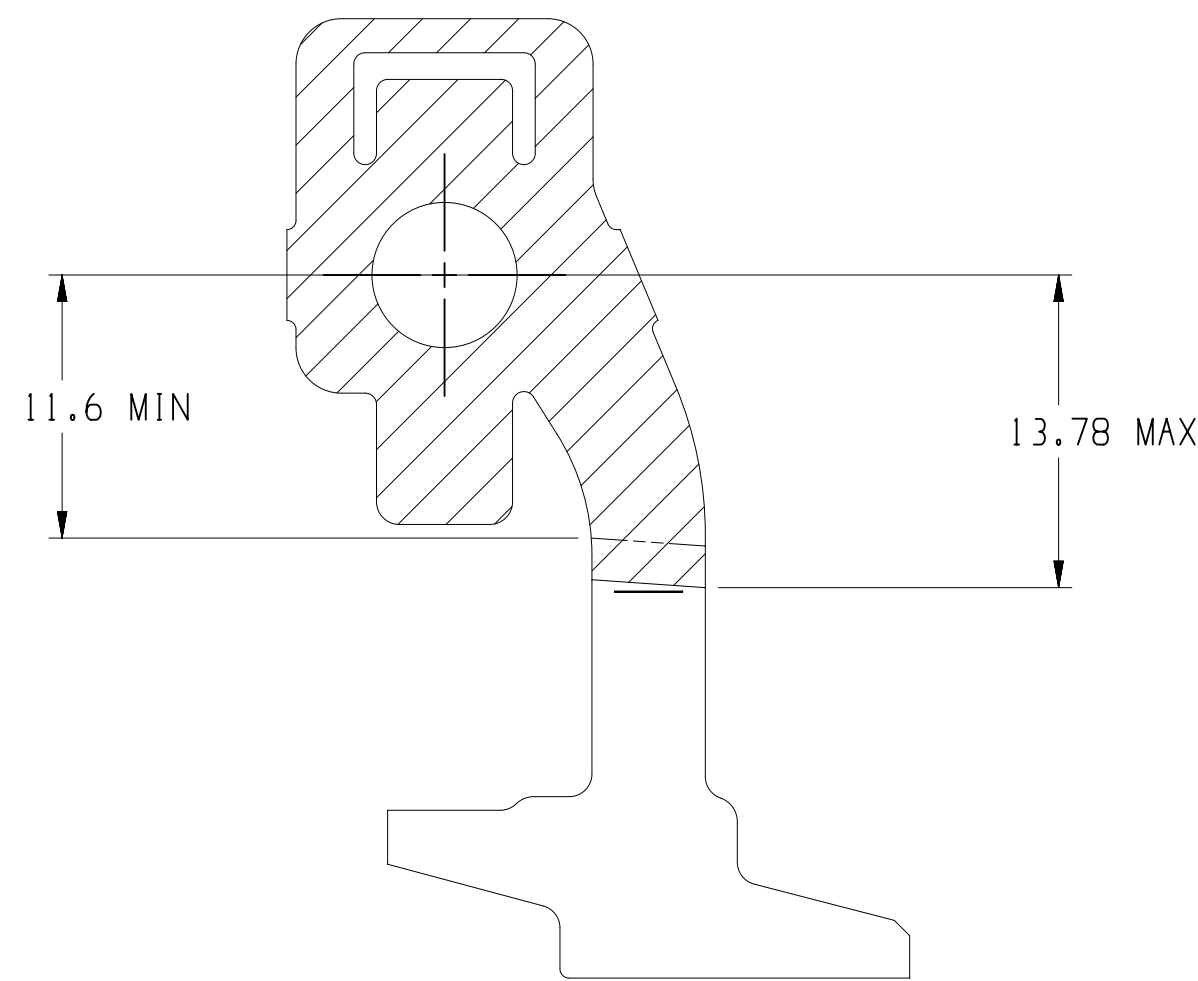


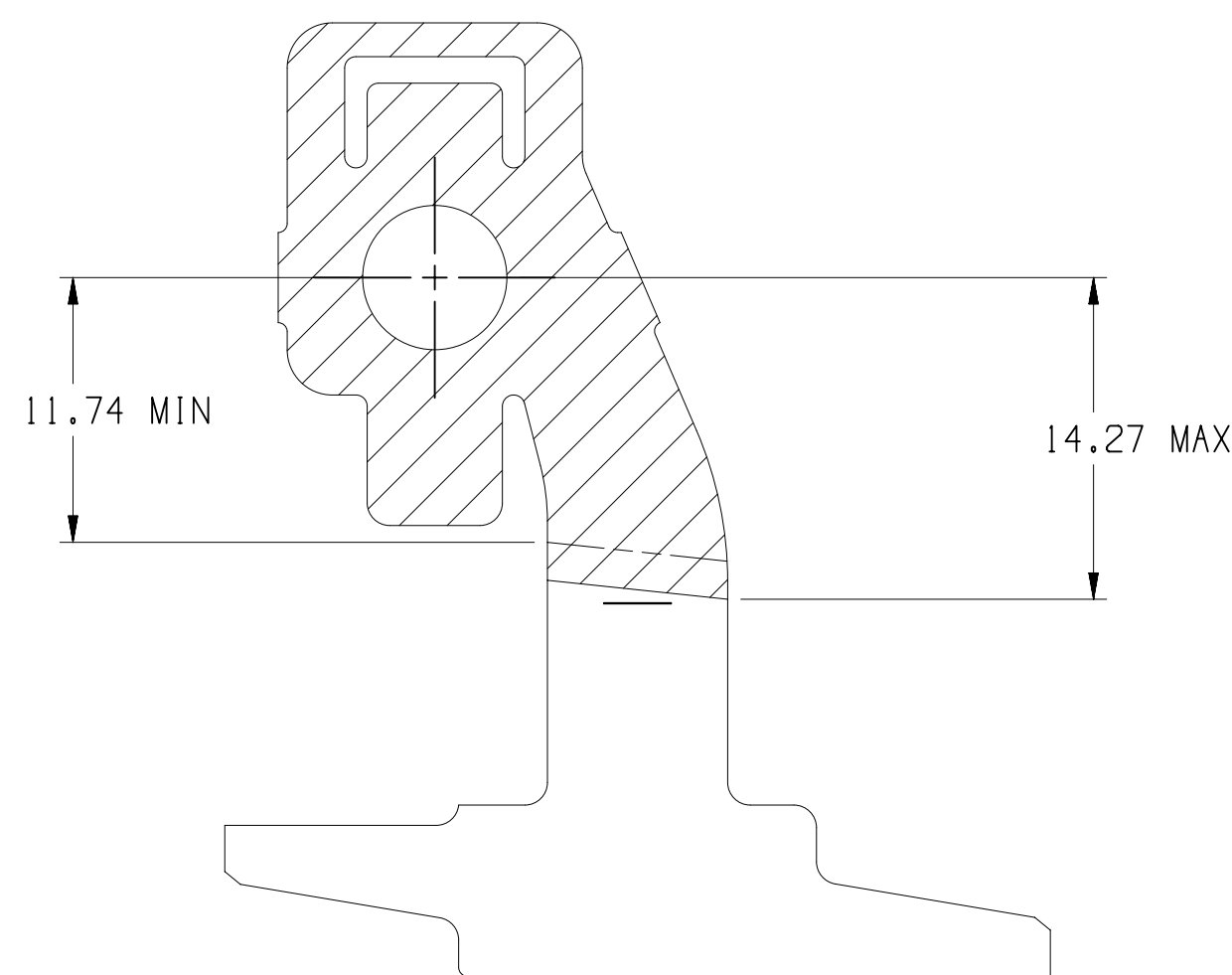
TYPE 1401



TYPE 1402



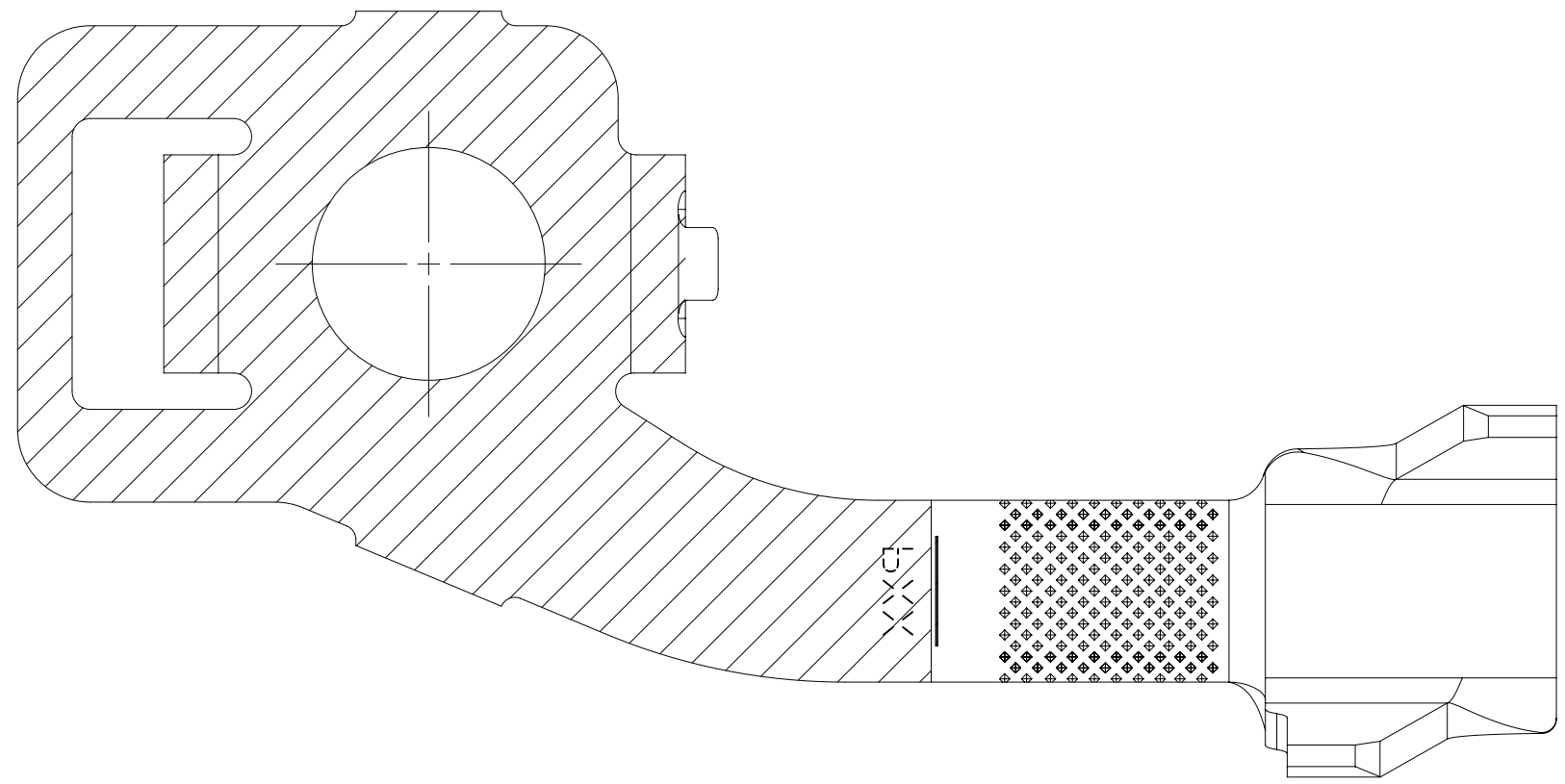
TYPE 1403



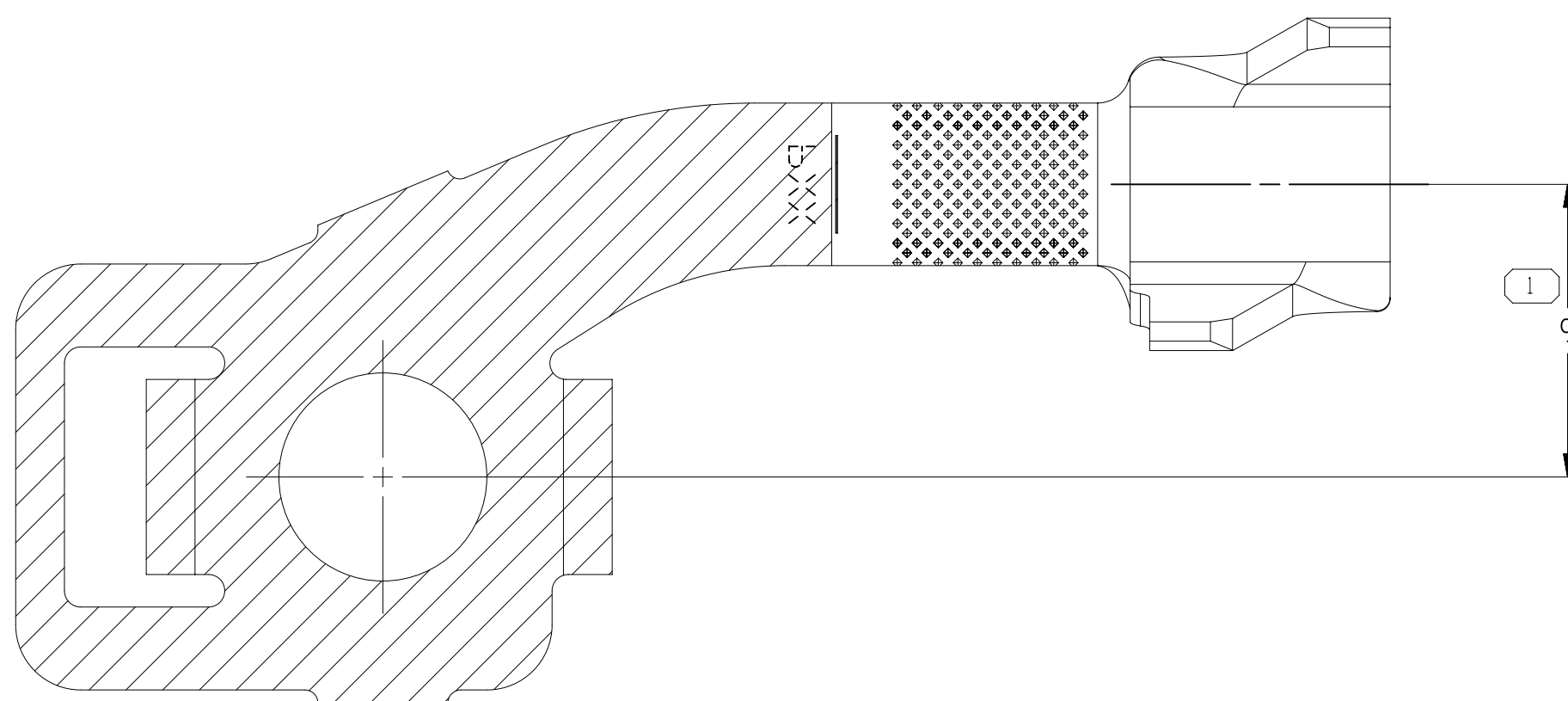
TYPE 1404

OPTIONAL CONSTRUCTION

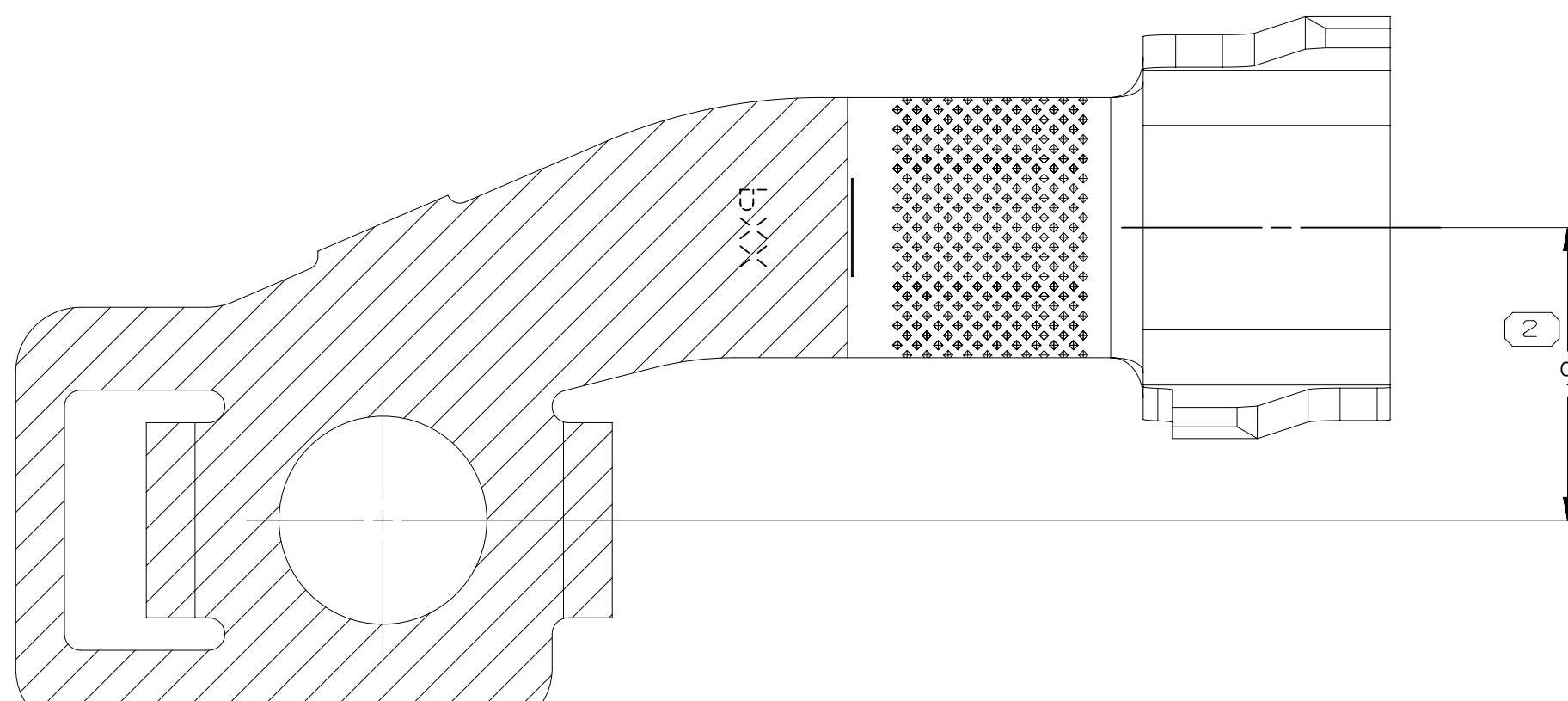
SEE NOTE #14
SCALE 3:1



TYPE 1402
SAME AS TYPE 1401
EXCEPT AS SHOWN



TYPE 1403
SAME AS TYPE 1402
EXCEPT AS SHOWN

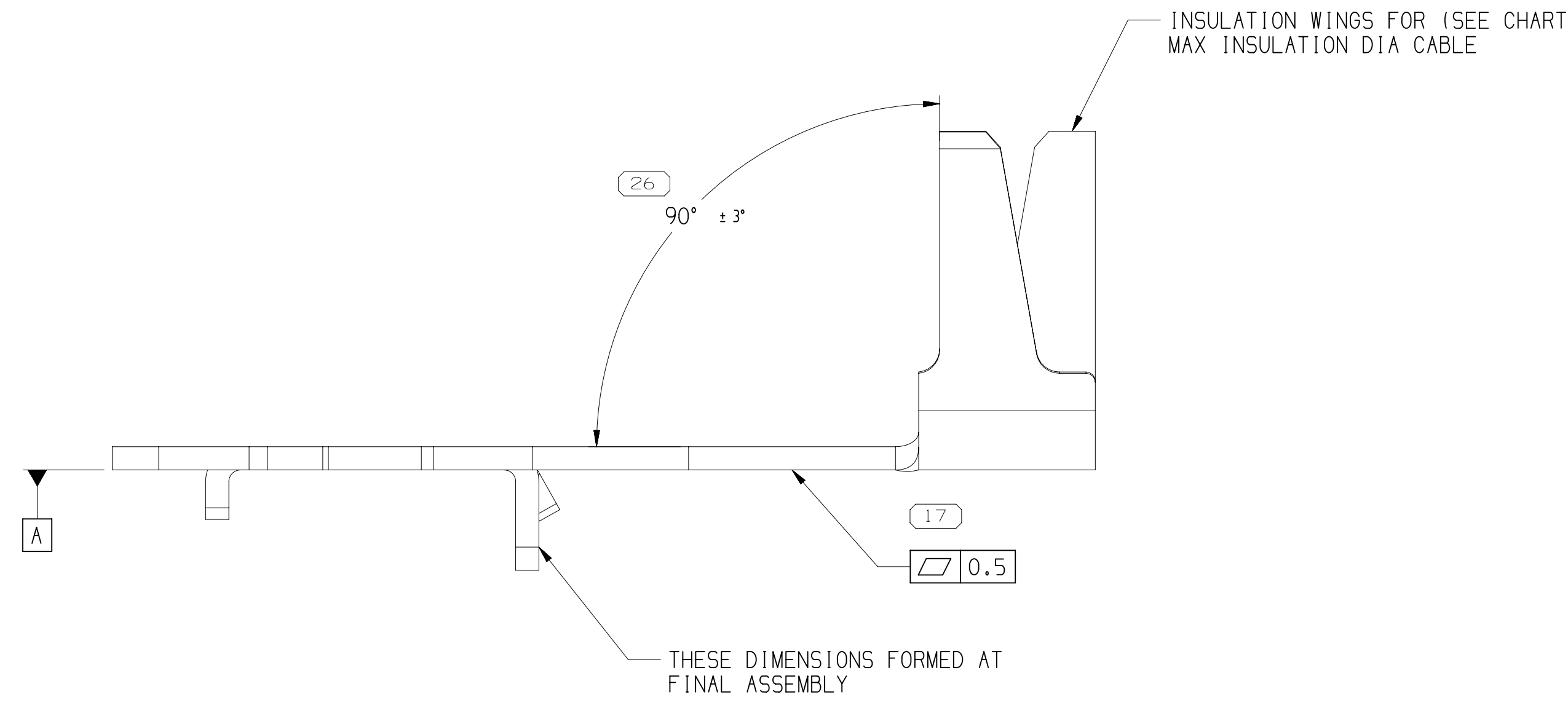
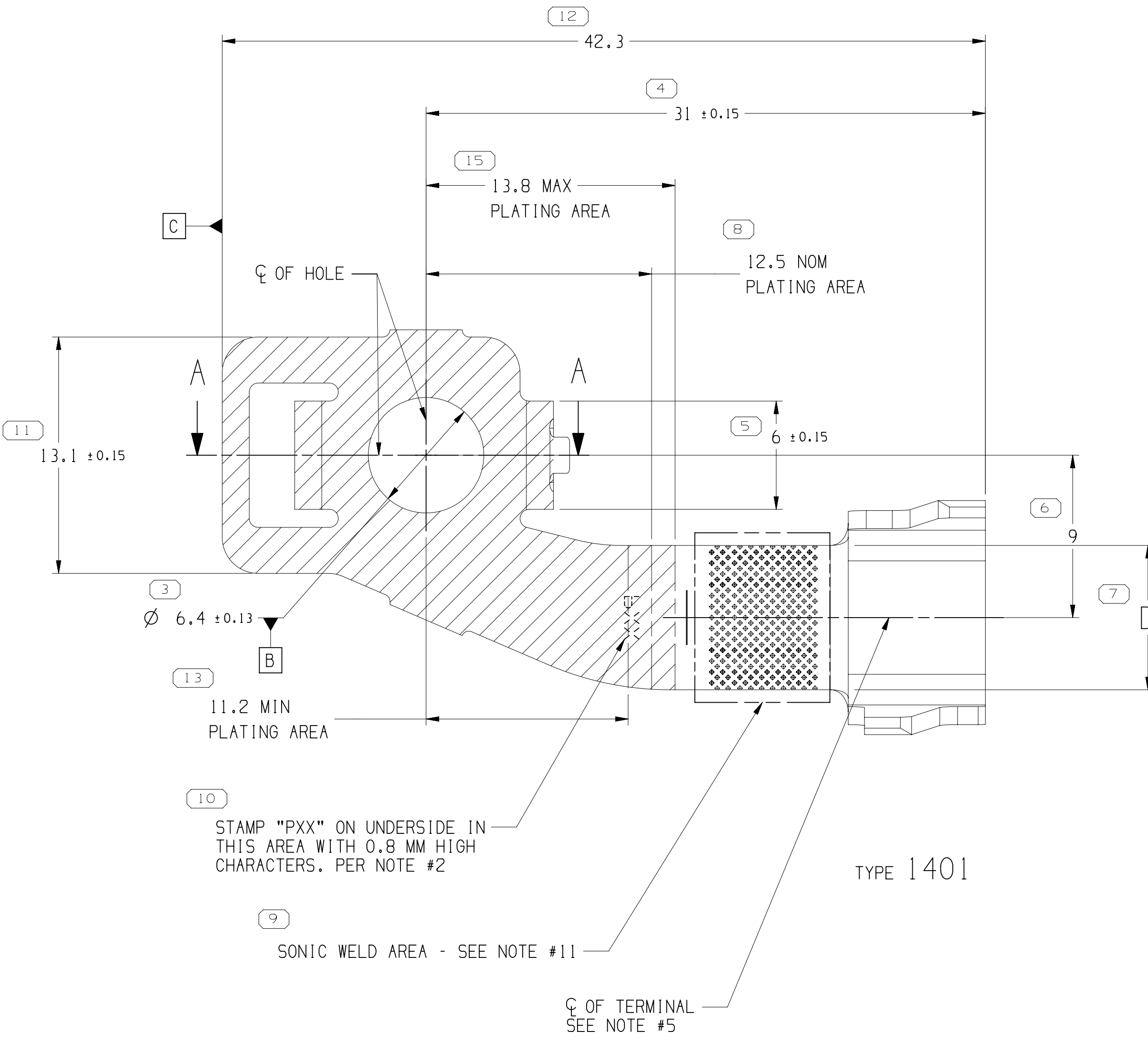
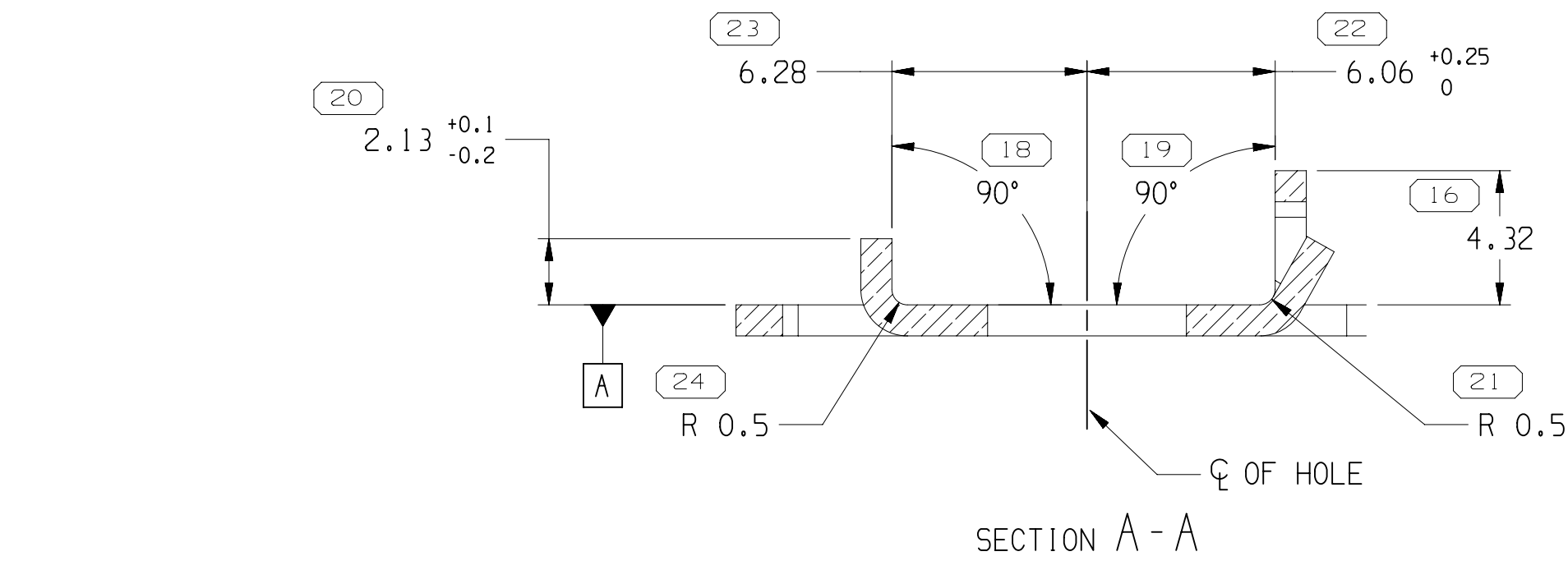


TYPE 1404
SAME AS TYPE 1403
EXCEPT AS SHOWN

DRAWING NUMBER 15485965									
SIZE A1x3	SCALE 5:1	FRAME NO 2 OF 2	SHEET NO 14 OF 14	REV R 06	INCP -				

SEE NOTE #12

PART NO	REV	N/P	TYPE	MAT'L SIZE	MAT'L SPEC	BUNDLE SIZE MM²	NO. OF WIRES (MIN-MAX)	D	F ±0.5
35240168	03	AC	1404	47.18 X 1.0	TIN PLATED COPPER ALLOY	6 - 15.25	1 - 12	8	12.97
35240169	04	AB	1403	47.18 X 1.0	TIN PLATED COPPER ALLOY	15 - 20	1 - 4	5	10.25
35240170	04	AB	1402	47.18 X 1.0	TIN PLATED COPPER ALLOY	0.5 - 6.5	1 - 8	5	10.25
35240171	03	AC	1401	47.18 X 1.0	TIN PLATED COPPER ALLOY	6 - 15.25	1 - 12	8	12.97
						15 - 20	1 - 4		



- NOTES
- UNLESS OTHERWISE SPECIFIED AND/OR INDICATED:
 - DIMENSIONS ARE TO FACE OF VIEW SHOWN AND AUTOMATICALLY ROUNDED BY COMPUTER FOR INSPECTION (SEE MATH MODEL FOR PRECISE DIMENSIONS). FOR ALL OTHER DIMENSIONS NOT SHOWN BUT REQUIRED FOR TOOL BUILD, SEE MATH MODEL FOR PRECISE TOOL PATH DATA.
 - "PXX" INDICATES "P" PLUS LAST TWO DIGITS OF MAKE DIE SERIES NUMBER P01, P02, P03, ETC1.
 - 0.4 R PERMISSIBLE ON ALL "SHARP" CORNERS.
 - VISIBLE CRACKS ARE NOT PERMISSIBLE.
 - PART ARE SYMMETRICAL ABOUT CENTERLINE.
 - PART ARE MADE FROM TIN PLATED STOCK.
 - TERMINALS SHALL BE FREE DEBRIS, RESIDUAL ABRASIVE MATERIALS, CORROSION PRODUCTS AND ANY EXTERNAL RESIDUES. NO LUBE EXCESS IS PERMISSIBLE.
 - "*+" DENOTES CABLE SIZE OR GAUGE OF SECONDARY LEAD.
 - TERMINAL MUST BE ABLE TO WITHSTAND A TORQUE OF TBD Nm.
 - PARTS MUST BE KEPT THE SONIC WELDING AREA DRY PRIOR TO THE WELDING PROCESS.
 - MINIMUM WELD AREA AS DEFINED ON DRAWING MUST BE KEPT FREE OF TIN PLATING OR OTHER COATING/PLATING.
 - MINIMUM RETENTION FORCE WITH TOP TERMINAL OF 110N.
 - TERMINALS TO BE LOOSE PIECE
 - OPTIONAL CONSTRUCTION FOR EU ONLY. ALL DIMENSIONS TO BE THE SAME AS PREFERRED CONSTRUCTION EXCEPT PLATING ZONE MEASUREMENT
 - TERMINAL TAB CAN BE PARTIALLY OR FULL PLATED

18	PROCESS SENSITIVE DIMENSION	19	10	11	12	13	14	15	16	17	18	19	20	21	22	23	24	25	26	27	28	29	30	31	32	33	34	35	36	37	38	39	40	41	42	43	44	45	46	47	48	49	50	51	52	53	54	55	56	57	58	59	60	61	62	63	64	65	66	67	68	69	70	71	72	73	74	75	76	77	78	79	80	81	82	83	84	85	86	87	88	89	90	91	92	93	94	95	96	97	98	99	100
----	-----------------------------	----	----	----	----	----	----	----	----	----	----	----	----	----	----	----	----	----	----	----	----	----	----	----	----	----	----	----	----	----	----	----	----	----	----	----	----	----	----	----	----	----	----	----	----	----	----	----	----	----	----	----	----	----	----	----	----	----	----	----	----	----	----	----	----	----	----	----	----	----	----	----	----	----	----	----	----	----	----	----	----	----	----	----	----	----	----	----	----	----	----	----	-----

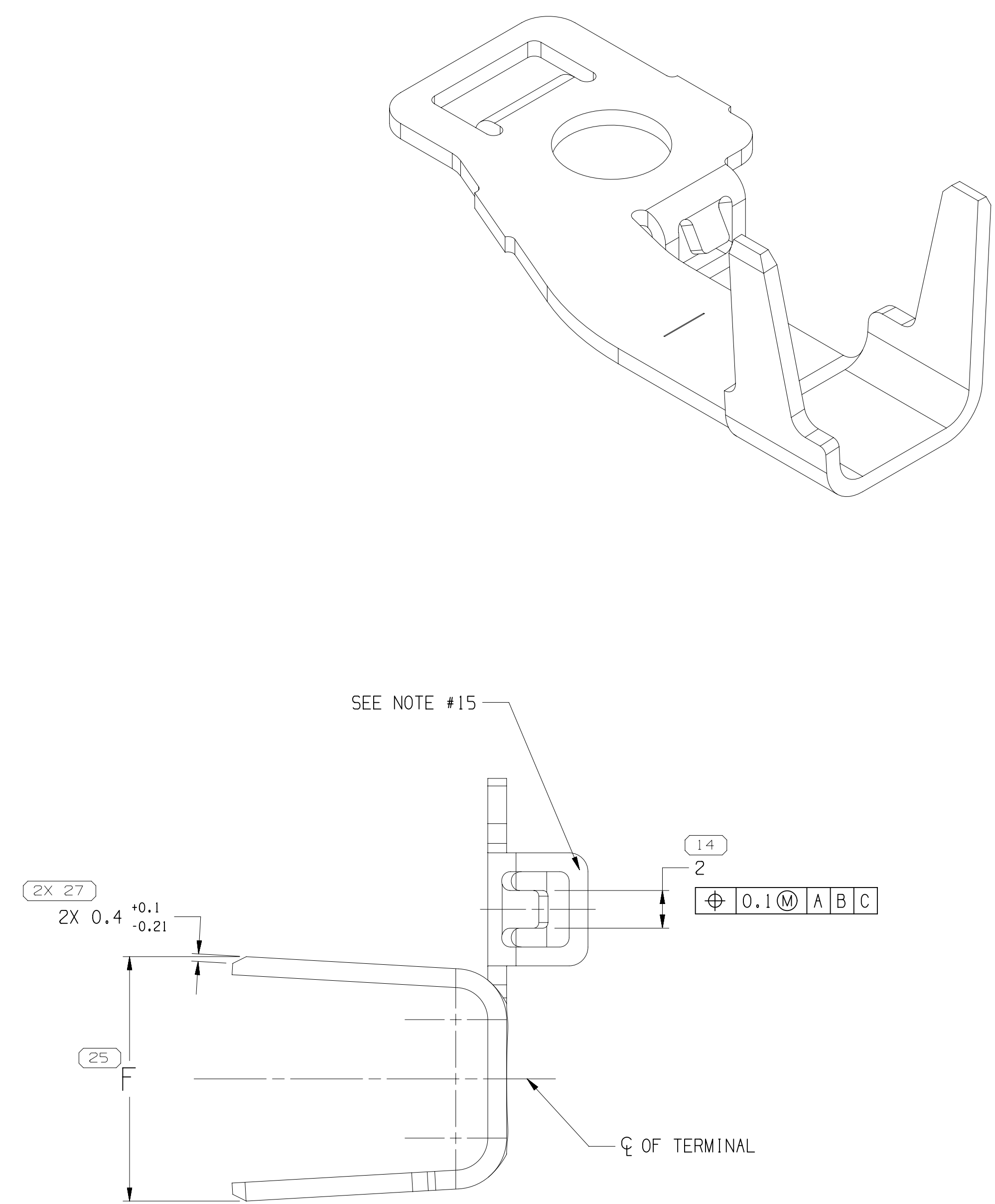
THIRD ANGLE PROJECTION	DO NOT SCALE	USE MATH DATA	18	19	20	21	22	23	24	25	26	27	28	29	30	31	32	33	34	35	36	37	38	39	40	41	42	43	44	45	46	47	48	49	50	51	52	53	54	55	56	57	58	59	60	61	62	63	64	65	66	67	68	69	70	71	72	73	74	75	76	77	78	79	80	81	82	83	84	85	86	87	88	89	90	91	92	93	94	95	96	97	98	99	100
------------------------	--------------	---------------	----	----	----	----	----	----	----	----	----	----	----	----	----	----	----	----	----	----	----	----	----	----	----	----	----	----	----	----	----	----	----	----	----	----	----	----	----	----	----	----	----	----	----	----	----	----	----	----	----	----	----	----	----	----	----	----	----	----	----	----	----	----	----	----	----	----	----	----	----	----	----	----	----	----	----	----	----	----	----	----	----	----	-----

CONNECTION SYSTEMS		WARREN, IN		COPYRIGHT 2018 APV, ALL RIGHTS RESERVED.	
THIS DRAWING IS THE PROPERTY OF APV AND CONTAINS APV'S CONFIDENTIAL INFORMATION. THE REPRODUCTION, DISTRIBUTION AND UTILIZATION OF THIS DOCUMENT OR ITS RELATED CAD DATA, AS WELL AS COMMUNICATION BY ANY MEANS TO THIRD PARTIES, WITHOUT EXPRESS AUTHORIZATION, IS PROHIBITED.		SUBSTANCES OF CONCERN AND RECYCLED CONTENT: P01, APV11, 10049001		REPERY: SEE CHART	
DRAWING NAME		TAXI TERM RING SONIC		DRAWING NUMBER	
15485965		SIZE		SCALE	
A1x3		5:1		FRAME NO	
2 OF 2		14 OF 14		SHEET NO	
R 06		REV		NOT	

A DIMENSION WITHOUT AN INSPECTION REPORT SYMBOL DOES NOT REQUIRE INSPECTION. IT MAY BE CONTROLLED ON THE INDIVIDUAL COMPONENT DRAWING.		TOTAL NO. OF INSPECTIONS REQUIRED		28	
LAST NO. USED		27			

NO MISSING SYMBOL NUMBER					
--------------------------	--	--	--	--	--

DATE	STO	REV	N/P	CHK	ZONE	REVISION HISTORY	AUTH	DR	APR	APR	2
250C18	R	01	-	-	-	35240468-71 - RELEASED PART DRAWING	441115	AHQ	AHQ	LB	
22FE19	R	02	-	-	-	ALL PARTS - UPDATED PDM ATTRIBUTES	442417	JGO	AGH	AGH	
27JL20	R	03	-	-	-	4.32 WAS 4.53, [0.3] WAS [0.2], 2.13 ±0.1/0.2 WAS 2.13 ±0.1, 6.36 ±0.25/0 WAS 6.06 ±0.15/0 AND 6.28 ±0.1 WAS 6.06 ±0.15/0	552057	JGO	EVJ	AGH	
09DE20	R	04	-	-	-	ALL PARTS - [0.5] WAS [0.3], 35240169-70 - REVISED GRAPHICS	553082	JGM	JGM	AGH	
16FE21	R	05	-	-	-	ALL PARTS - UPDATED PART AVAILABILITY	553580	AHY	AHY	AGH	
05MR21	R	06	-	-	-	ALL PARTS - UPDATED PDM ATTRIBUTES	553725	LVD	JAN	AGH	



26028421

Mouser Electronics

Authorized Distributor

Click to View Pricing, Inventory, Delivery & Lifecycle Information:

[Aptiv:](#)
[35240169](#)