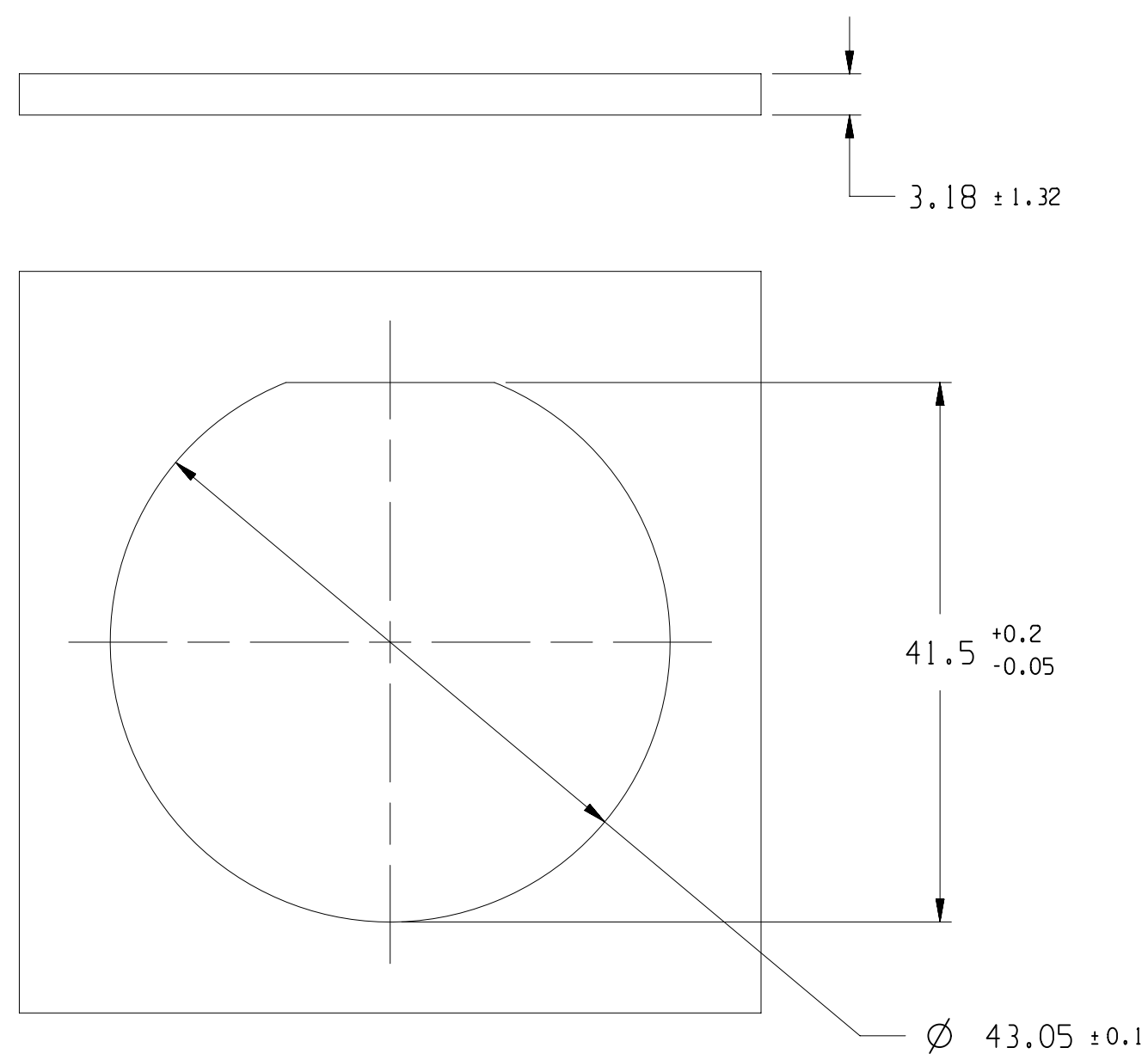
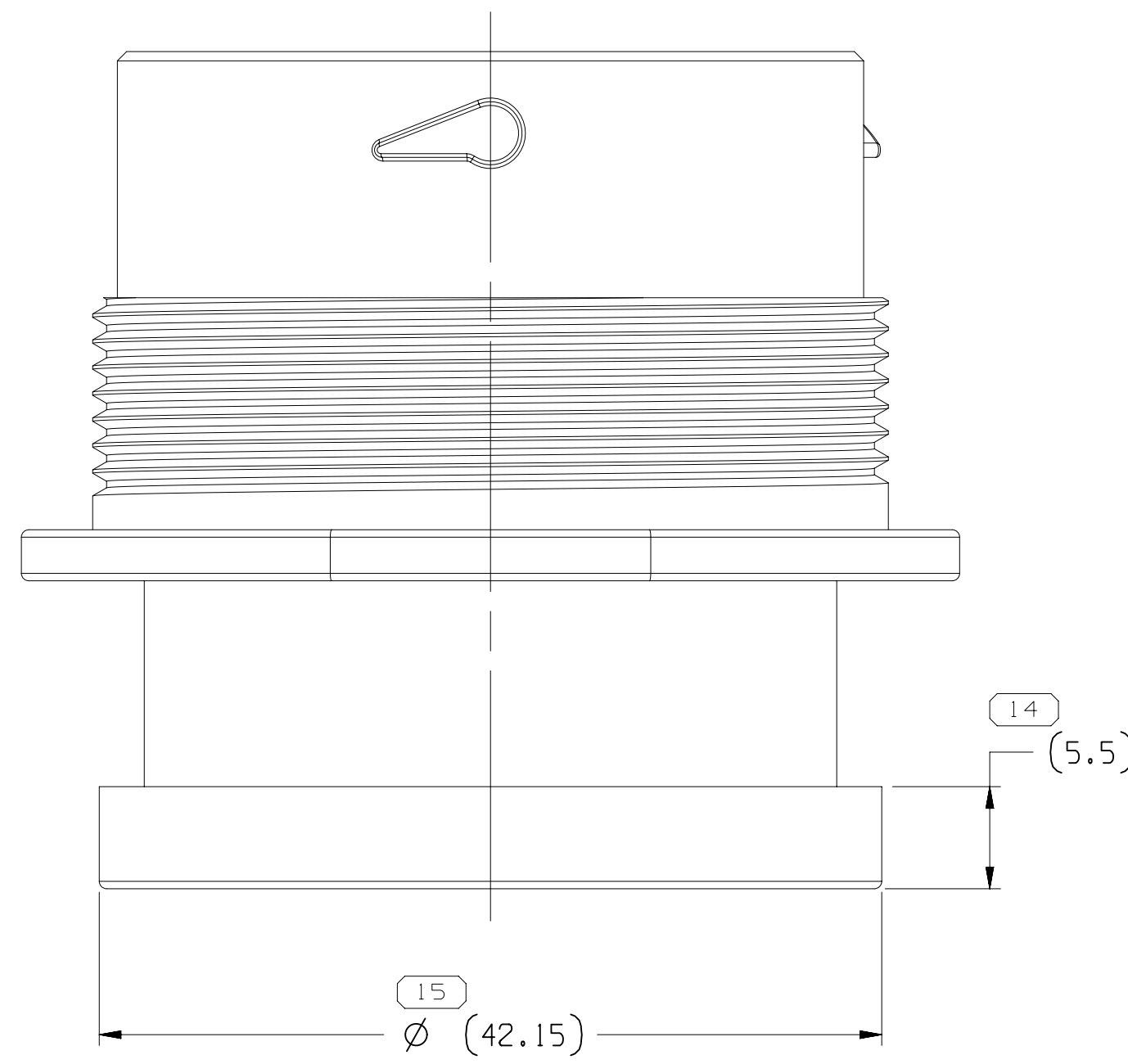
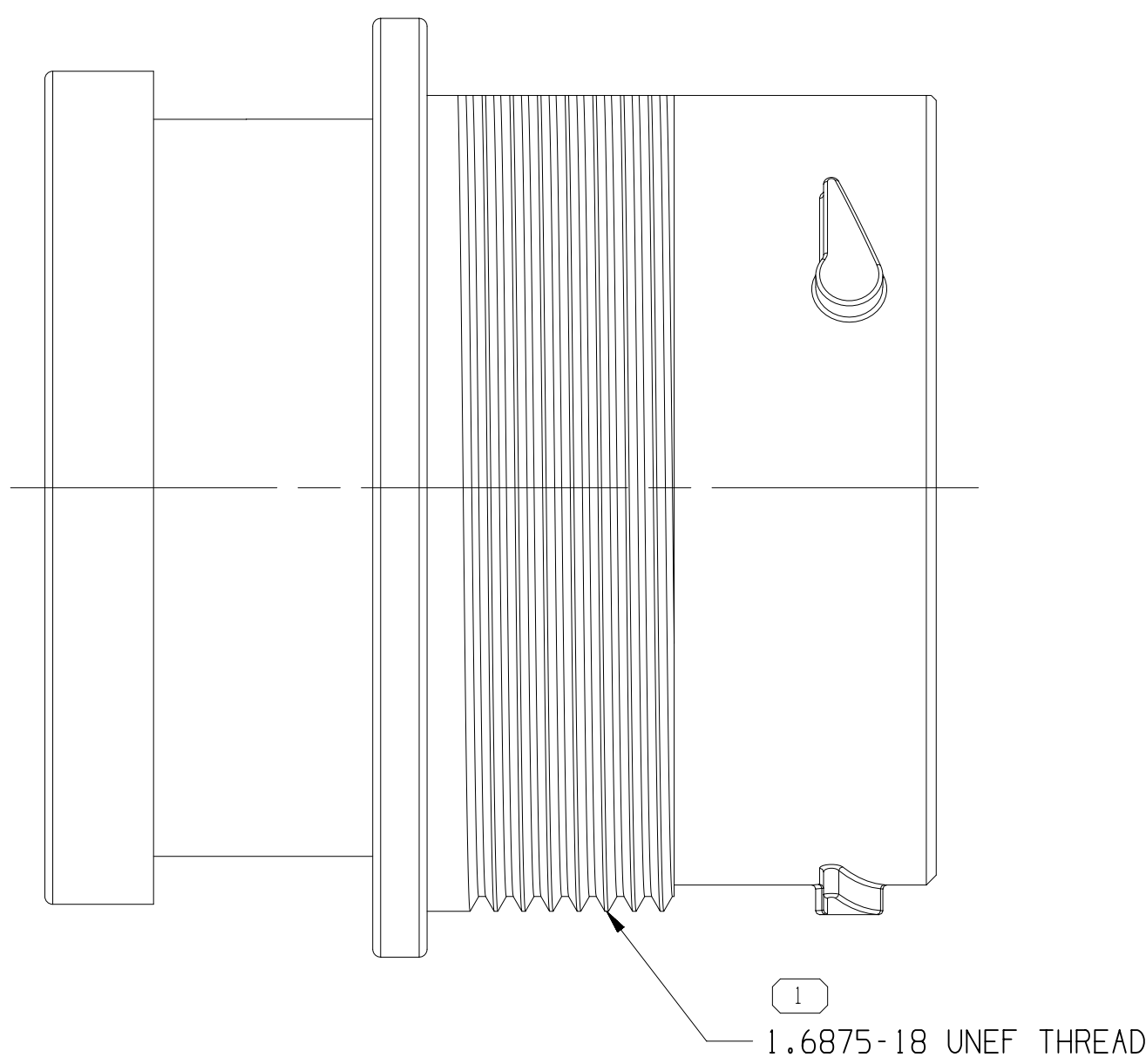
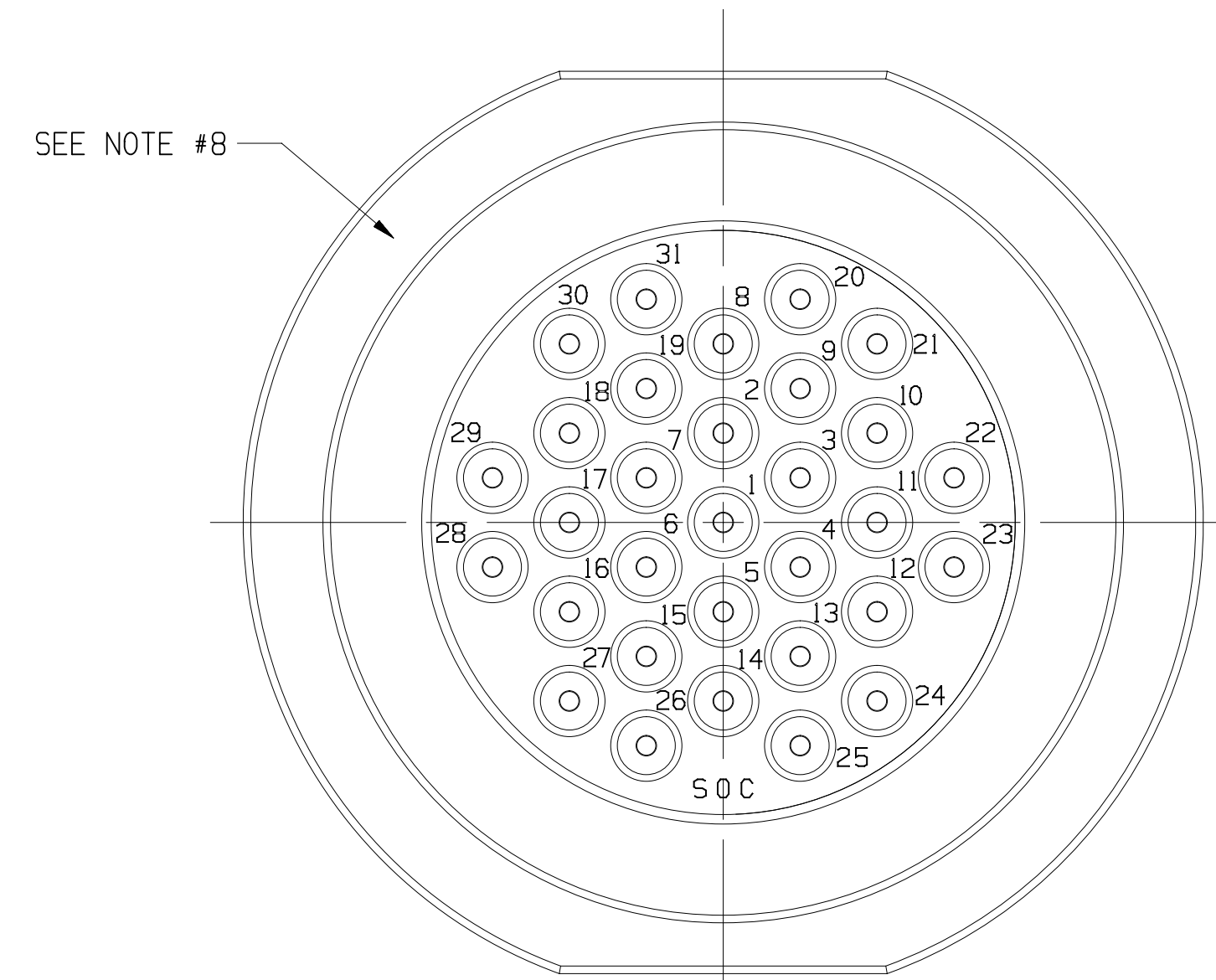
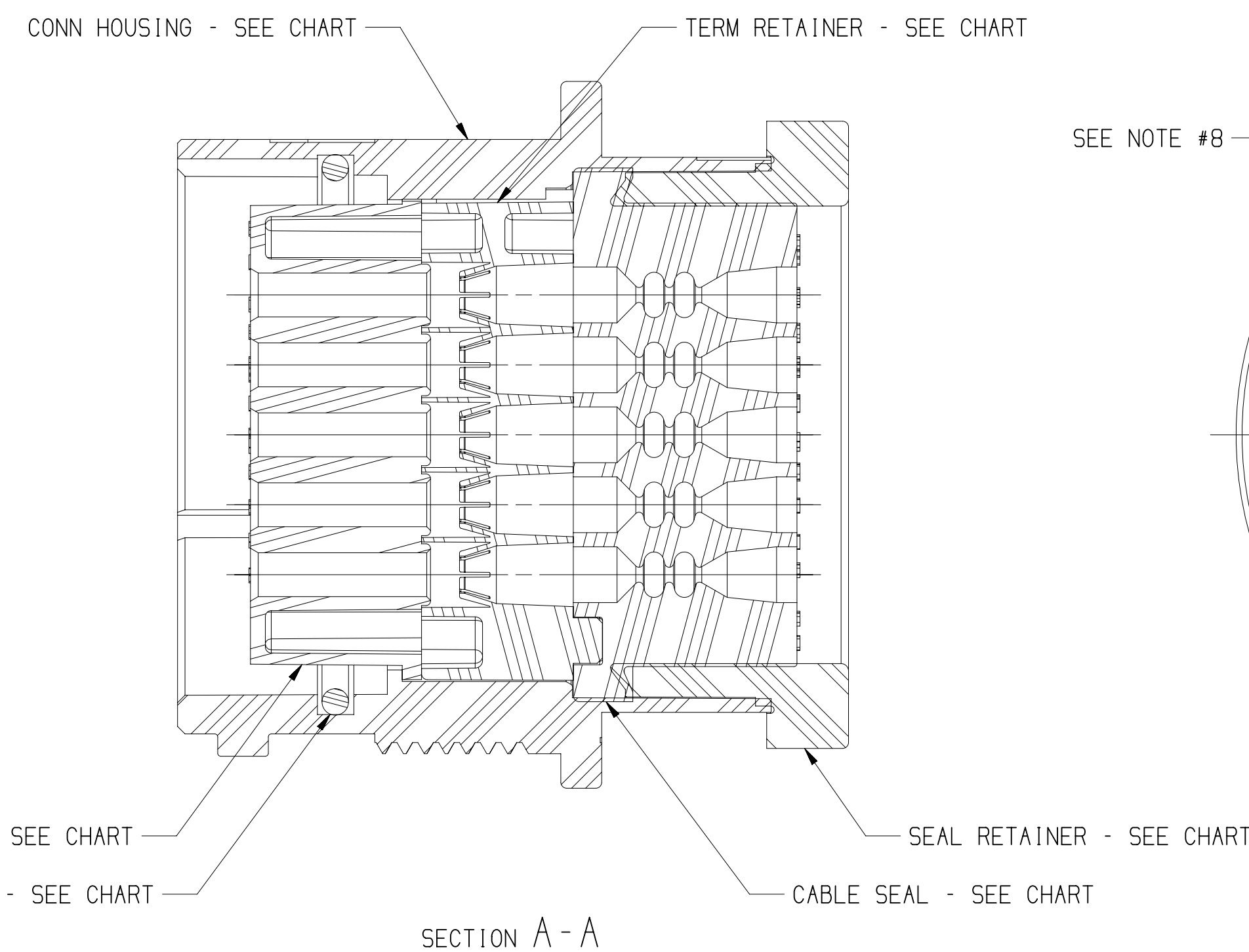
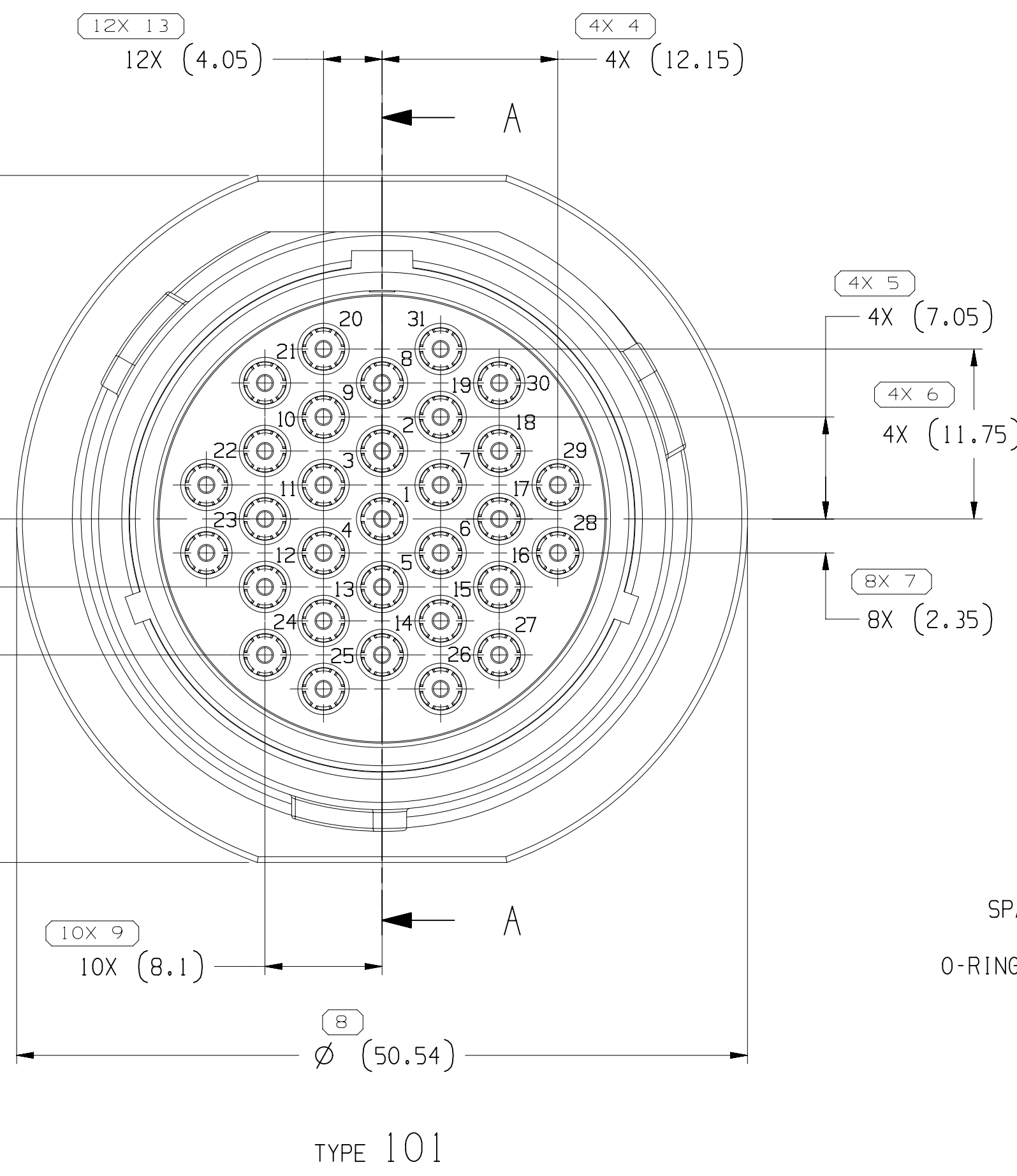
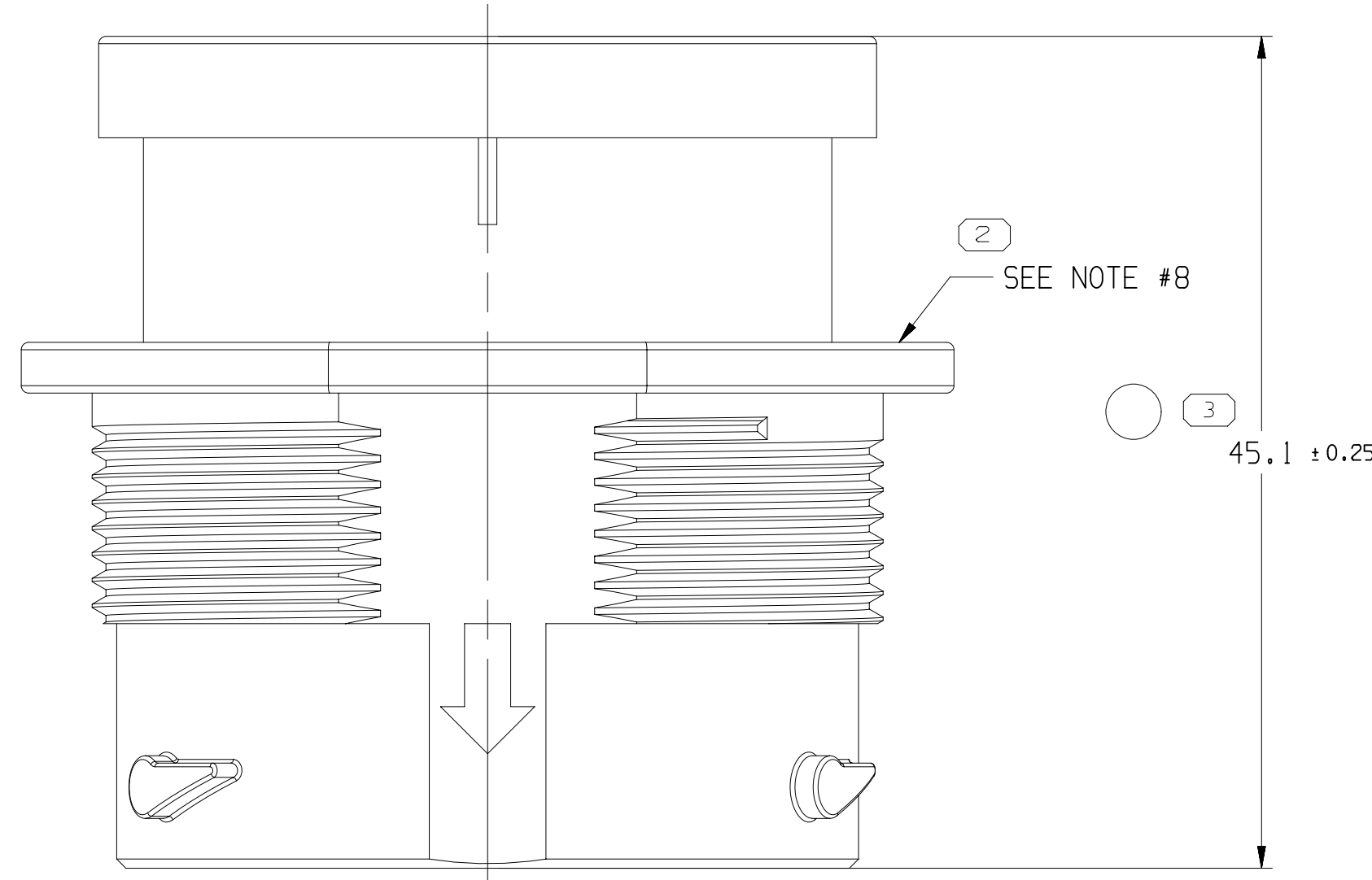


MISSING SYMBOLS		DWG STATUS				ZONE	REVISION HISTORY				AUTH	DR	APPROVALS	
		DATE	STG	REV	N/P		CHG	1	2					
NO MISSING SYMBOL NUMBER		06JAN13	R	01	-	-	ALL PARTS - RELEASED				422795	MUM	MUM	GER
		07AUI13	R	02	-	-	ALL PARTS - 45.4 +0.25/-0.3 WAS 45.4 +0.2/-0.3, ADDED "MATING PART NUMBER" COLUMN AND REVISED RETENTION FORCE NOTE				423506	ORA	JVM	GER M
		01OIC13	R	03	-	-	15544348-49 - SPACER WAS 13697458; 15544350 - SPACER WAS 13667936; 15544351 - TERM RETAINER WAS 13667902 AND SPACER WAS 13697113				424010	IMF	JAA	GER
		24JA17	R	04	-	-	ALL PARTS ADDED "THIS PART ACCEPTS NUT P/N" NOTE				435503	GDIH	JVM	VHG
		26N019	R	05	-	-	ALL PARTS - 45.1 ± 0.25 WAS 45.4 +0.25/-0.3				550539	JGM	JGM	ERG



NOTES

1. UNLESS OTHERWISE SPECIFIED AND/OR INDICATED:

DIMENSIONS ARE TO FACE OF VIEW SHOWN AND AUTOMATICALLY ROUNDED BY COMPUTER FOR INSPECTION (SEE MATH MODEL FOR PRECISE DIMENSIONS). FOR ALL OTHER DIMENSIONS NOT SHOWN BUT REQUIRED FOR TOOL BUILD, SEE MATH MODEL FOR PRECISE TOOL PATH DATA.
2. THIS PRODUCT IS NOT CATEGORIZED AS AN APPEARANCE ITEM, MINOR IMPERFECTIONS INCLUDING, BUT NOT LIMITED TO, FLOW MARKS, COLOR BLENDING, GATE VESTIGES, AND SOFT FLASH THAT DO NOT AFFECT THE FIT, FORM, OR FUNCTION OF THE PART ARE PERMISSIBLE PER DPNP-4.7-CS-01.
3. THIS PART IS NOT CONTROLLED FOR AUTOMATIC FEEDING.
4. CAVITIES TO ACCEPT THE FOLLOWING TERMINALS OR EQUIVALENT:

HES 1.6 - 13663718
HES 2.4 - 13783291
5. FOR APPLICATION DATA SEE THE INDIVIDUAL APPLICATION DRAWINGS.
6. SEAL RETAINER PULL RETENTION FORCE MUST EXCEED 880 N.
7. SHIPPING CAN 13752446 OR EQUIVALENT CAN BE ADDED AFTER HARNESS BUILT TO PROTECT PINS & PROTECT AGAINST CONTAMINATION.
8. DELPHI ASSEMBLY PART NUMBER, AND JULIAN DATE OF MANUFACTURE TO BE LAZER ETCHED ON HOUSING SURFACE SHOWN. CHARACTER HEIGHT TO BE 2MM MINIMUM.
9. ASSEMBLY NUT TORQUE TO ATTACH ASSEMBLY TO MOUNTING HOLE TO BE 3 NM \pm 0.5 NM.
10. THIS PART ACCEPTS THE FOLLOWING COMPONENTS OR EQUIVALENT:

• APTIV •

CONNECTION SYSTEMS

WARREN, OH

COPYRIGHT 2013 APTIV. ALL RIGHTS RESERVED.

THIS DRAWING IS THE PROPERTY OF APTIV AND CONTAINS APTIV
CONFIDENTIAL INFORMATION. THE REPRODUCTION, DISTRIBUTION AND
UTILIZATION OF THIS DOCUMENT OR ITS RELATED OR MATH DATA, AS WELL
AS COMMUNICATION OF ANY CONTENT TO OTHERS, WITHOUT EXPRESS
AUTHORIZATION, IS PROHIBITED.

						DATE				
DR										
APVD1 M. MELLOTT						06.JUN.13				
APVD2 M. MELLOTT						06.JUN.13				
APVD3 G. ROBISON						06.JUN.13				
APVD4										
APVD5										
SUBSTANCES OF CONCERN AND RECYCLED CONTENT INFORMATION [0.94900]										
MATERIAL SEE CHART										
DRAWING NAME: TAXI ASM CONN. F HES 1.6 2.4 5LD MODULAR										
DRAWING NUMBER: 15544347										
SIZES A0		SCALE 3:1		FRAME 1 OF 1		SHEET NO 1 OF 1		STD R 05		REV N/P
2		1		1		1		1		-

er: hz145c
ent: 15544347-CUSQ1-501/05
Date: 11-Dec-19 Time: 17:48:01

Mouser Electronics

Authorized Distributor

Click to View Pricing, Inventory, Delivery & Lifecycle Information:

[Aptiv:](#)
[15544348](#)