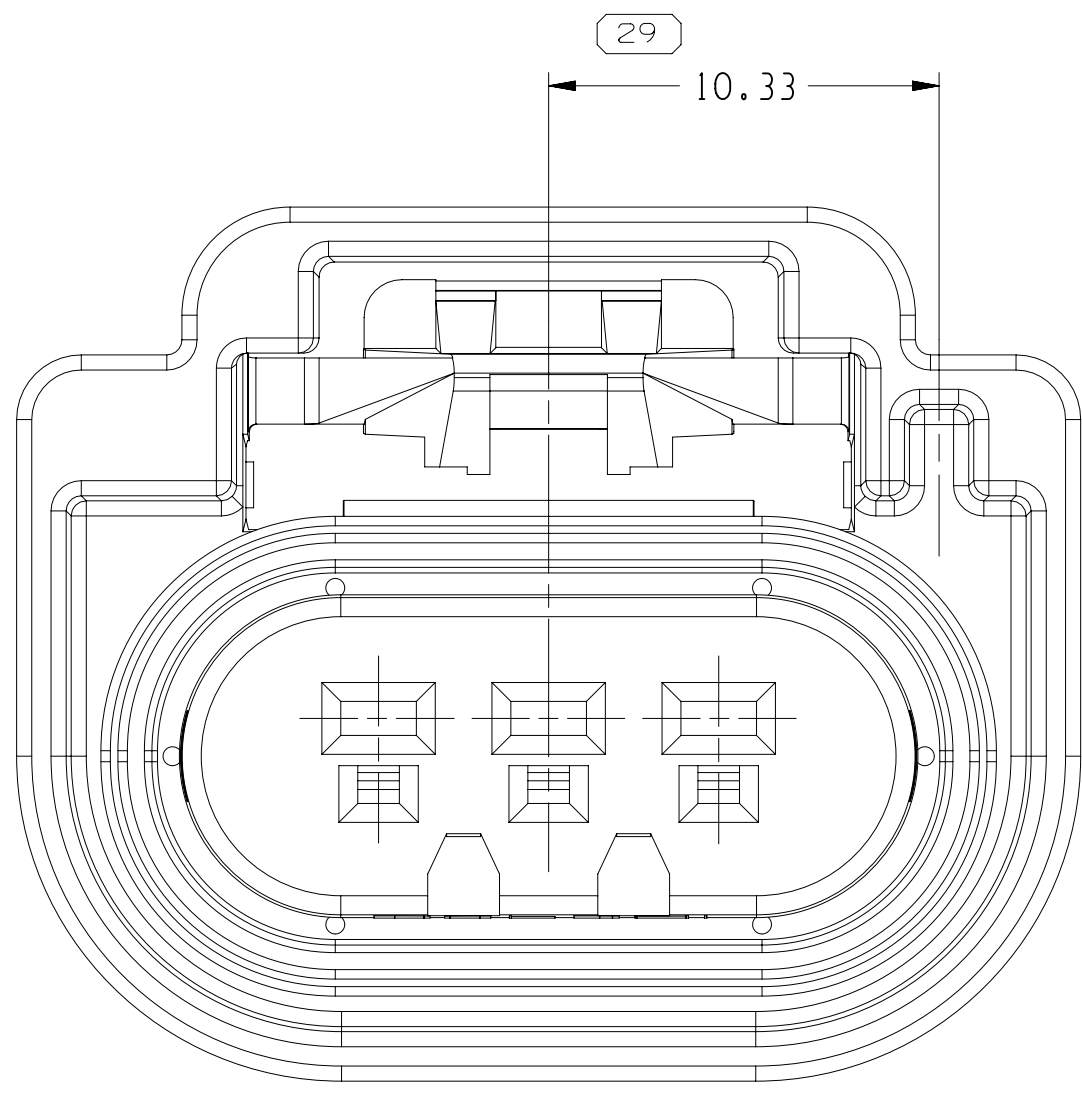
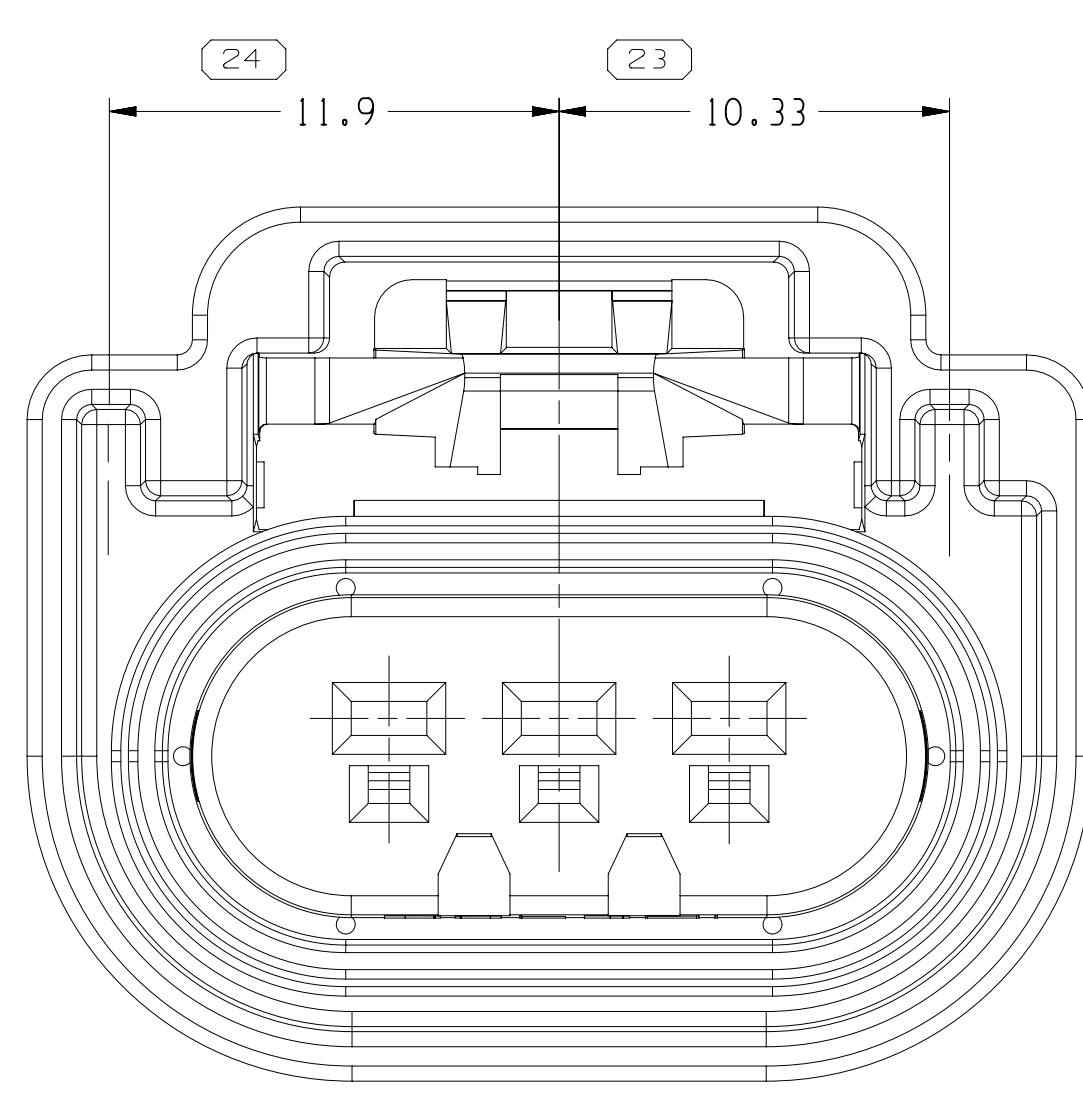


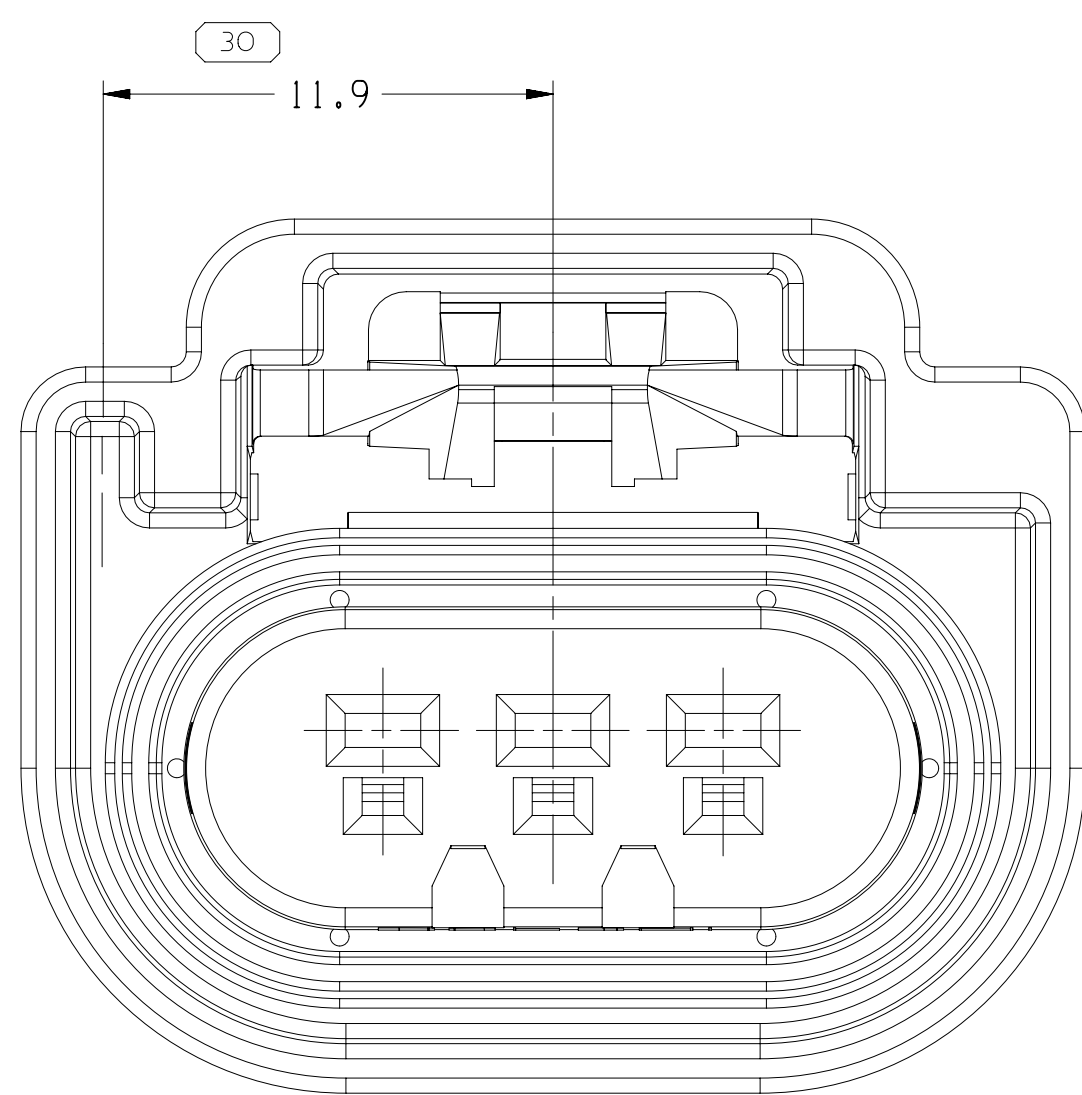
TYPE 110
SAME AS TYPE 101
EXCEPT AS SHOWN



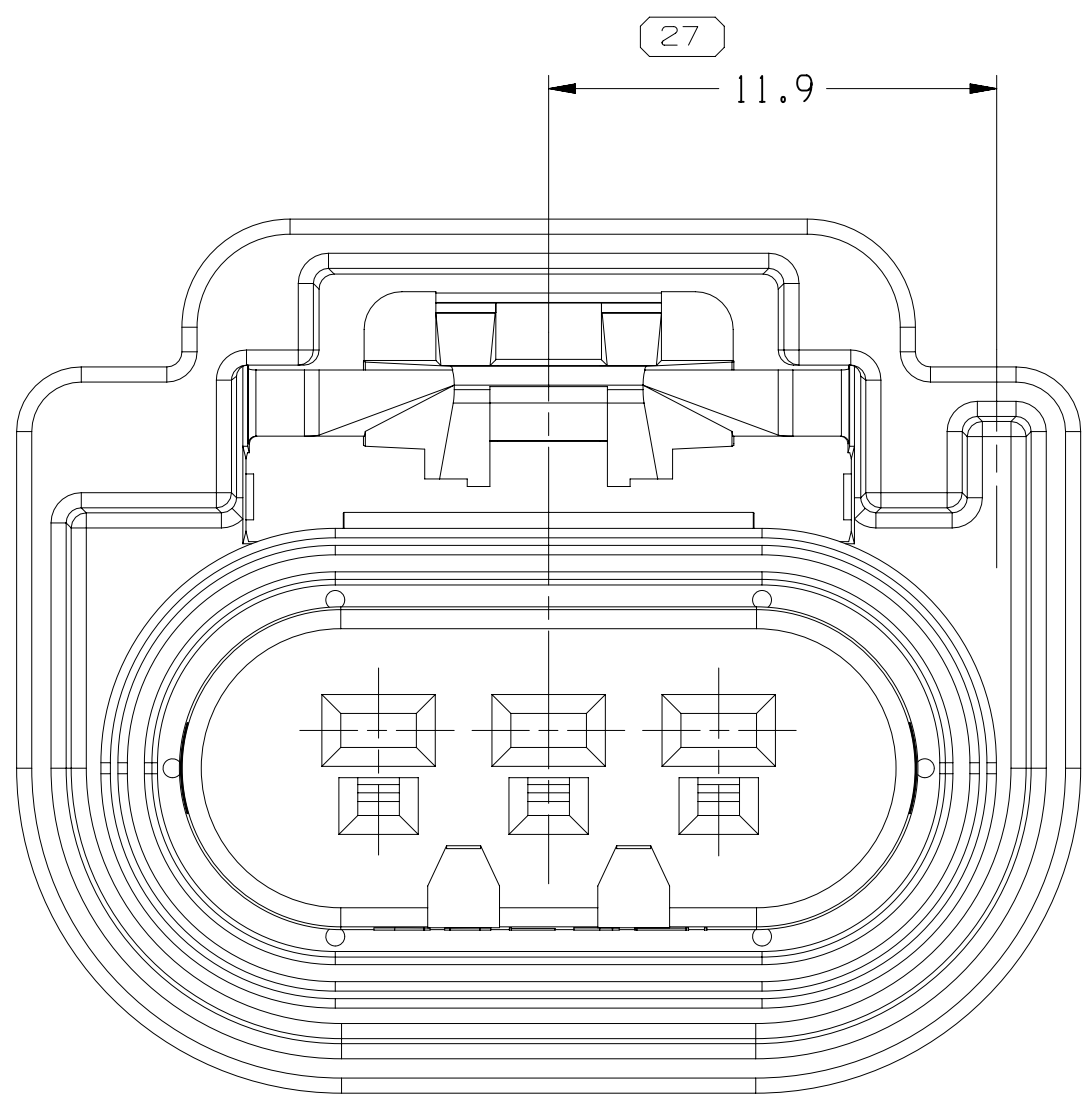
TYPE 107
SAME AS TYPE 102
EXCEPT AS SHOWN



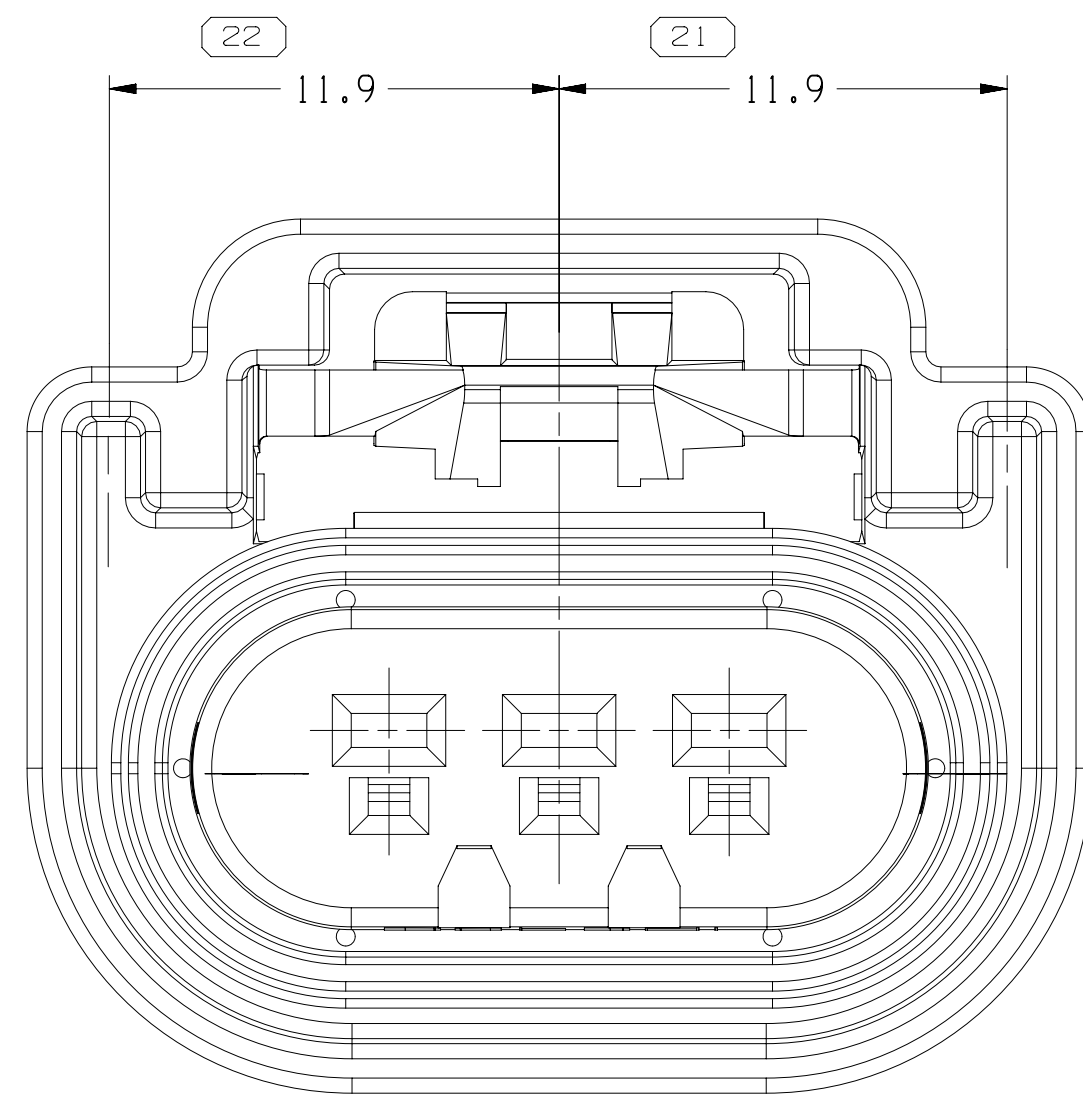
TYPE 104
SAME AS TYPE 102
EXCEPT AS SHOWN



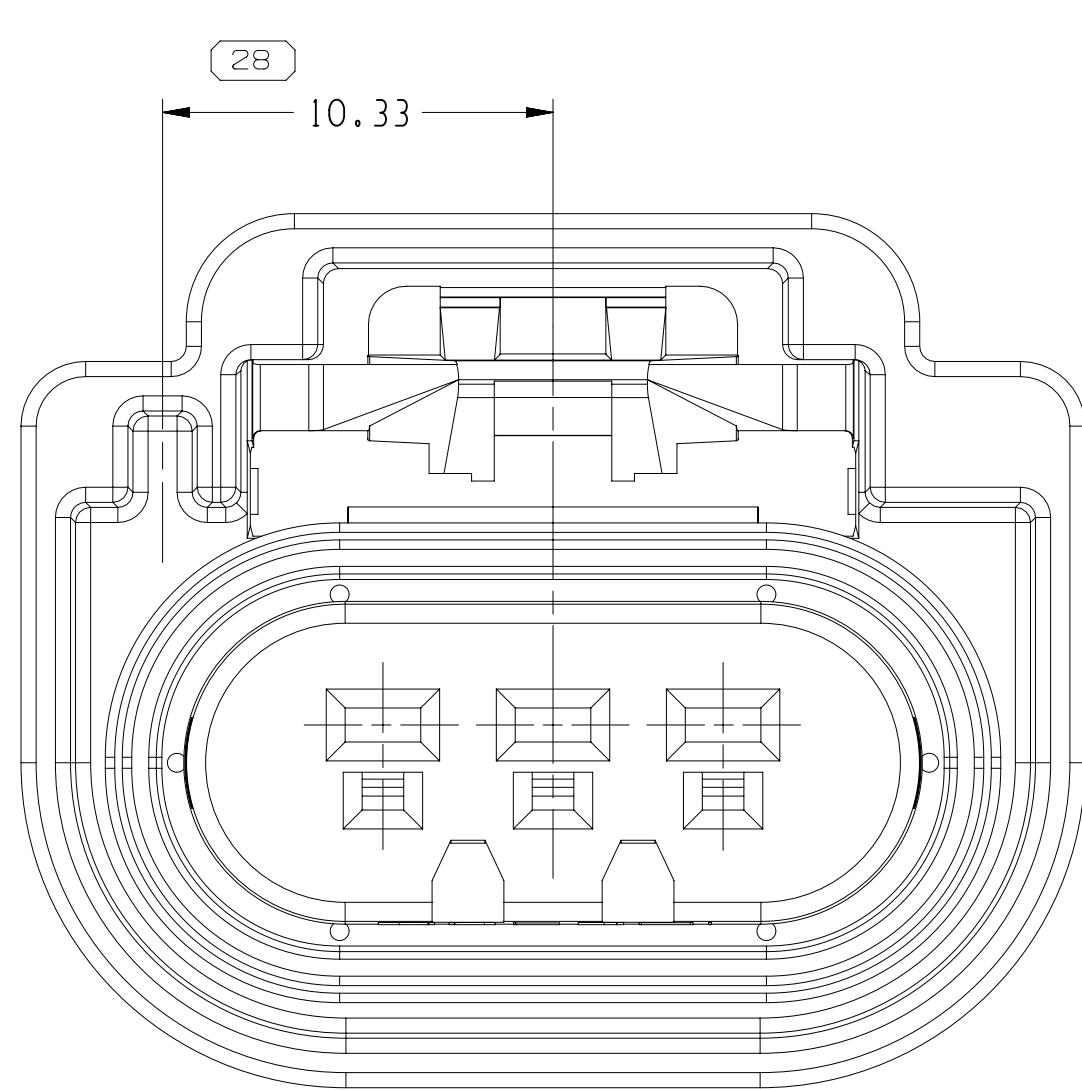
TYPE 109
SAME AS TYPE 102
EXCEPT AS SHOWN



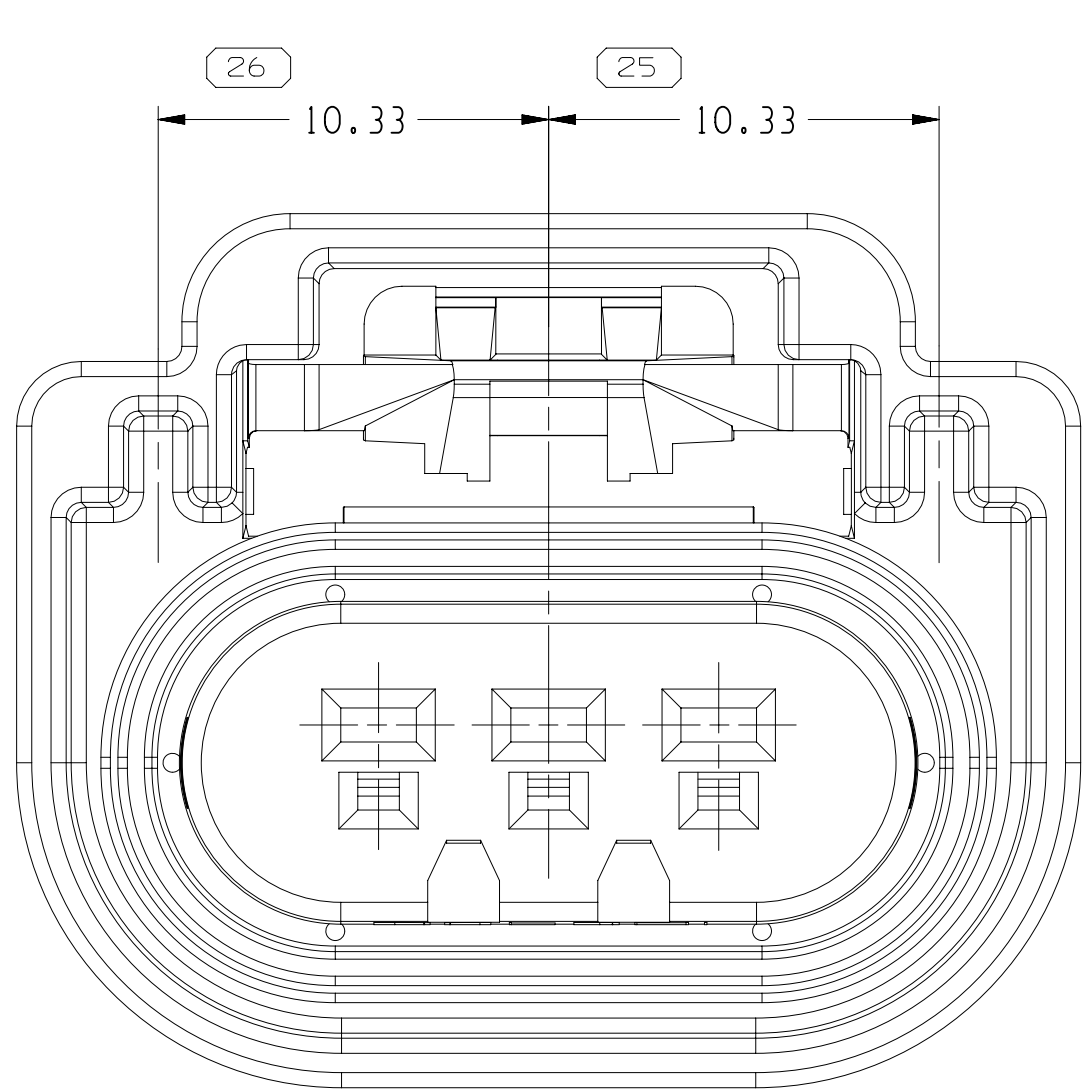
TYPE 106
SAME AS TYPE 102
EXCEPT AS SHOWN



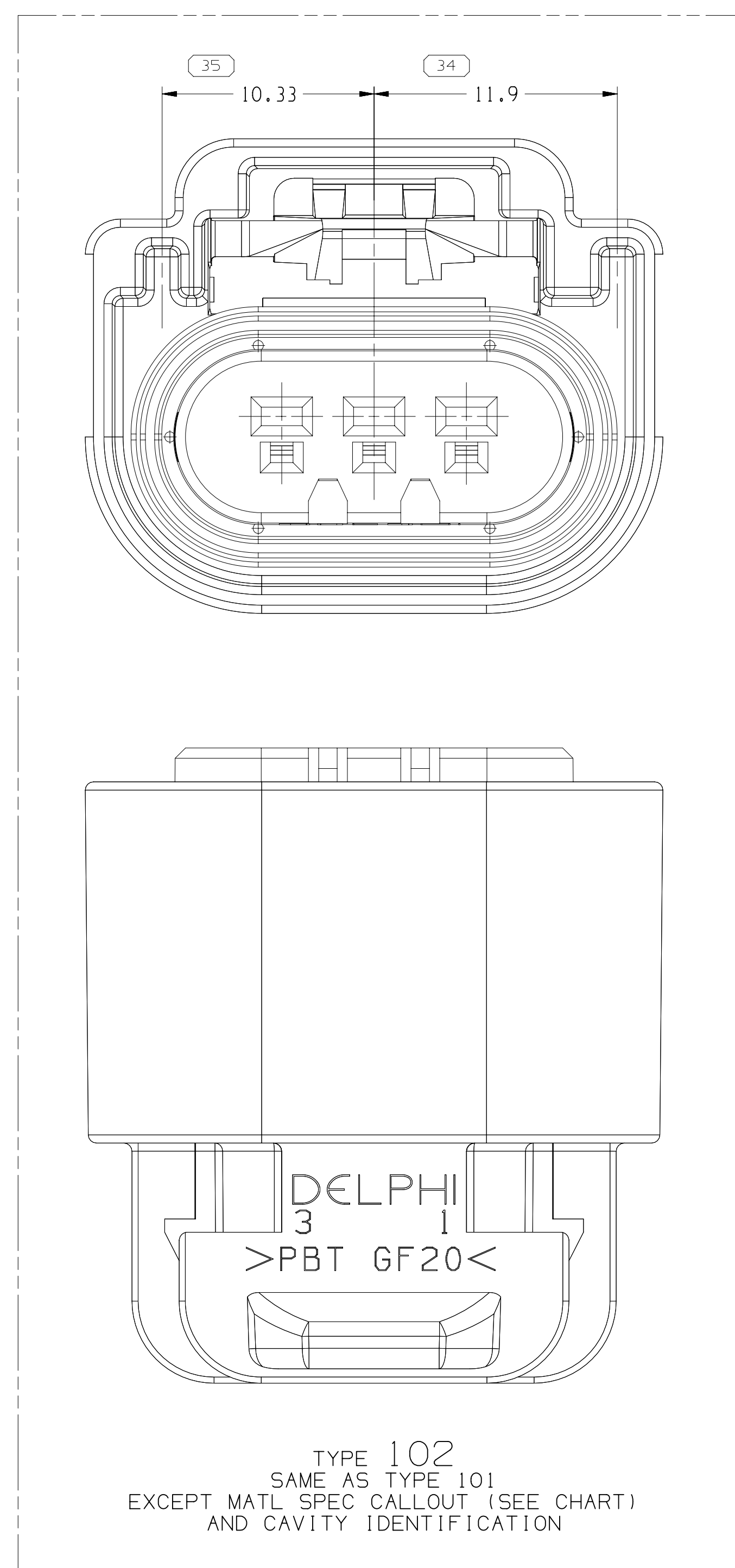
TYPE 103
SAME AS TYPE 102
EXCEPT AS SHOWN



TYPE 108
SAME AS TYPE 102
EXCEPT AS SHOWN

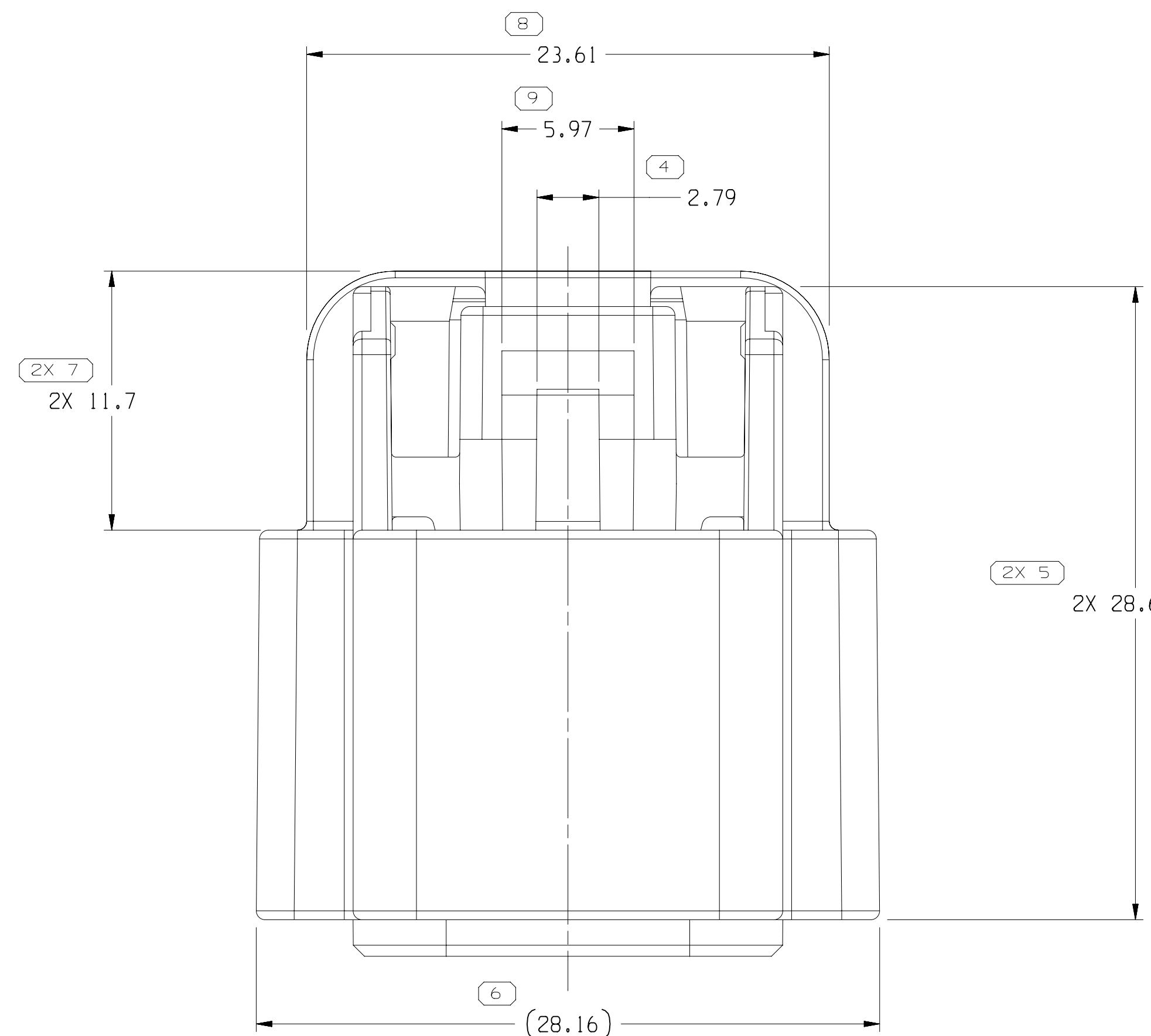


TYPE 105
SAME AS TYPE 102
EXCEPT AS SHOWN

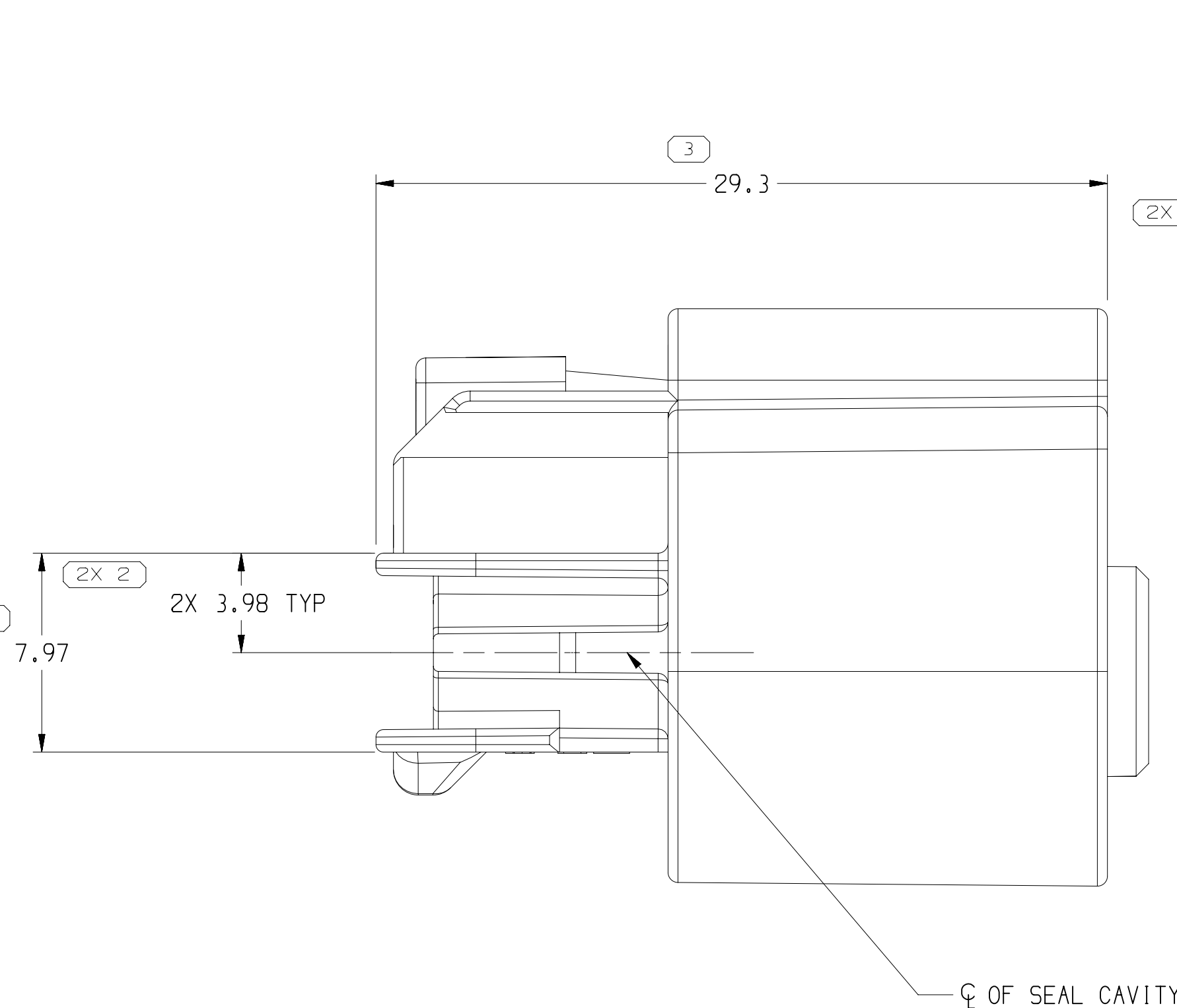


TYPE 102
SAME AS TYPE 101
EXCEPT MATL SPEC CALLOUT (SEE CHART)
AND CAVITY IDENTIFICATION

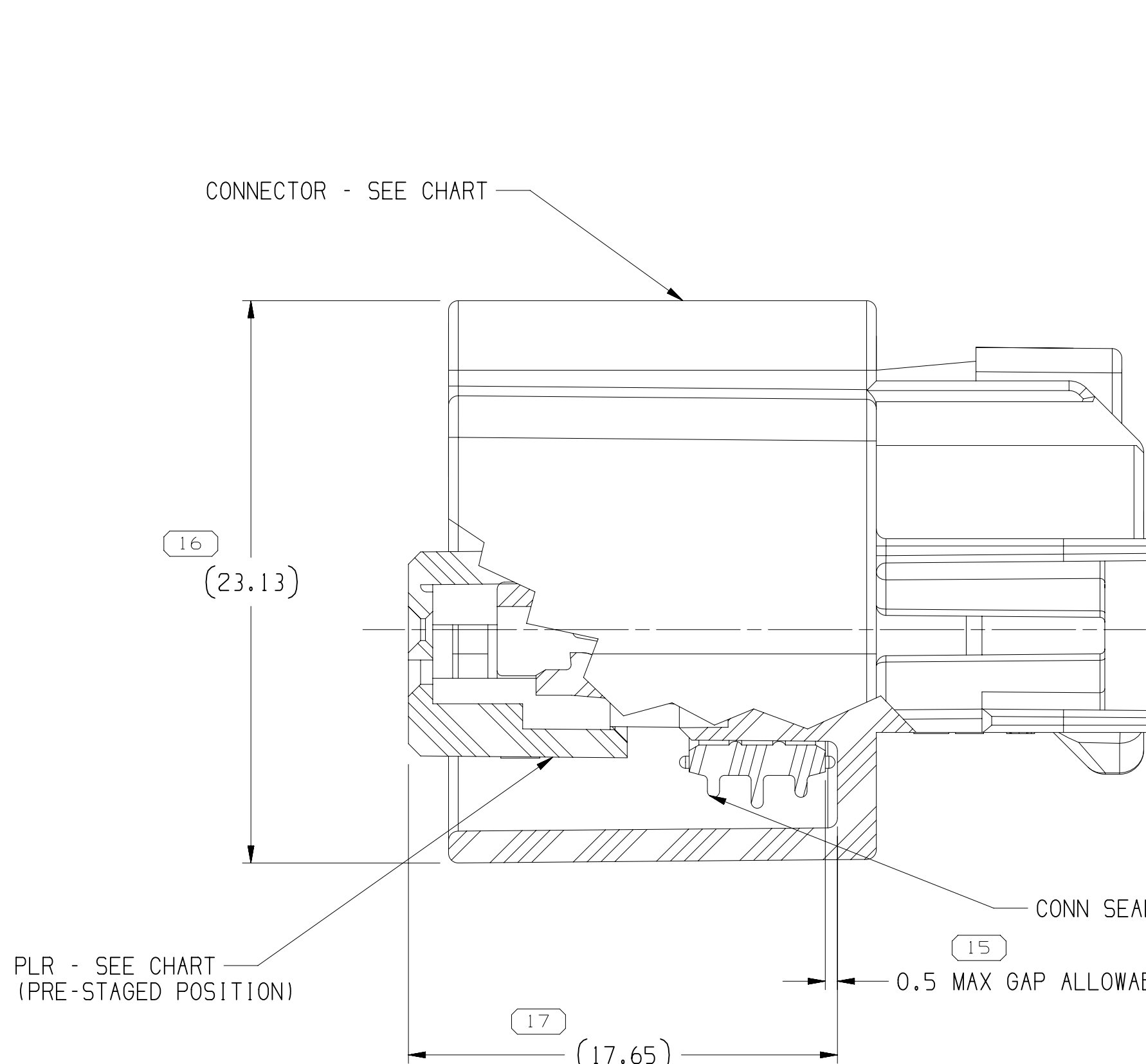
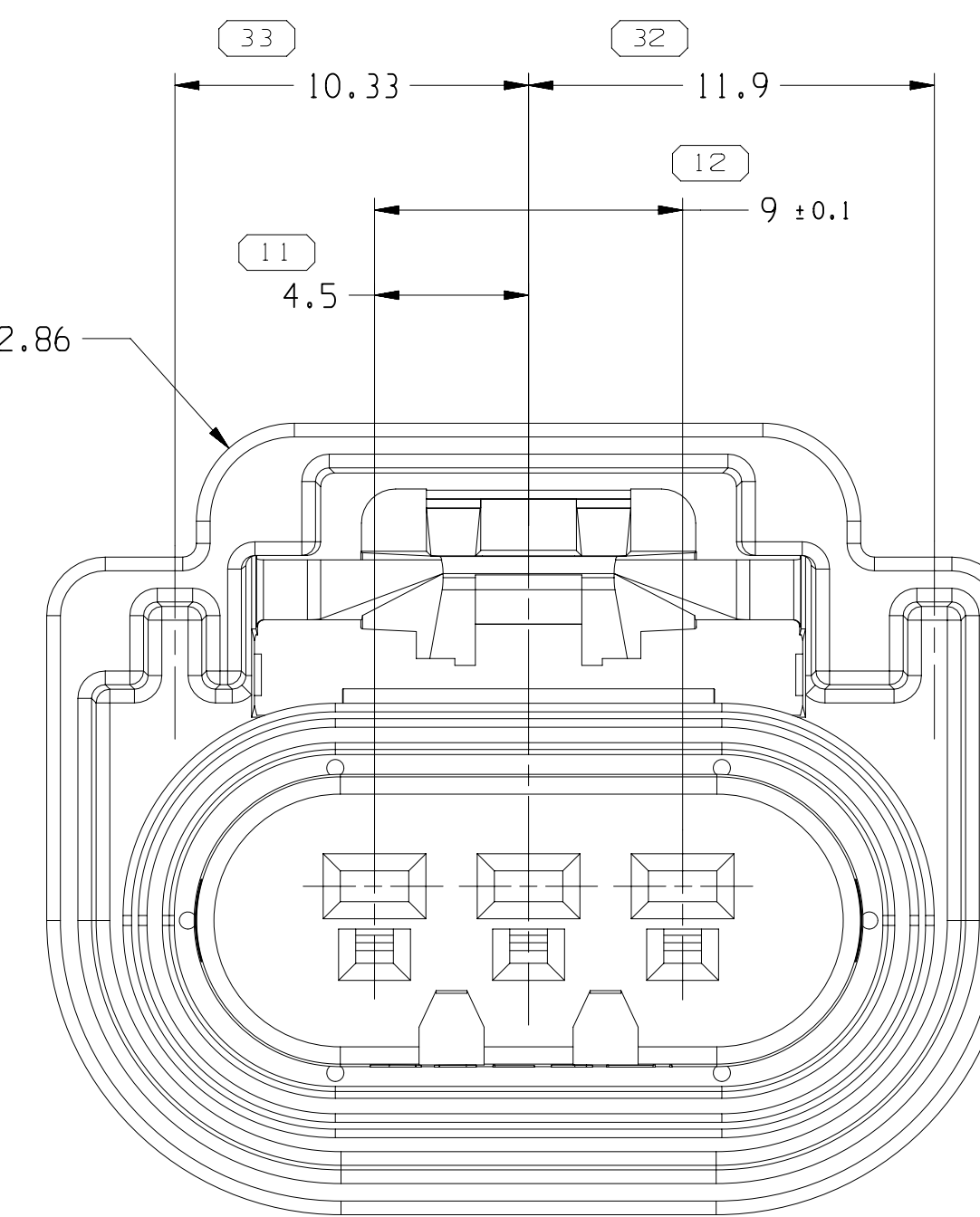
| | | | |
|----------------|-------|----------|----------|
| DRAWING NUMBER | | 13511997 | |
| SIZE | SCALE | FRAME NO | SHEET NO |
| A1x3 | 5:1 | 2 OF 2 | 1 OF 3 |



TYPE 101

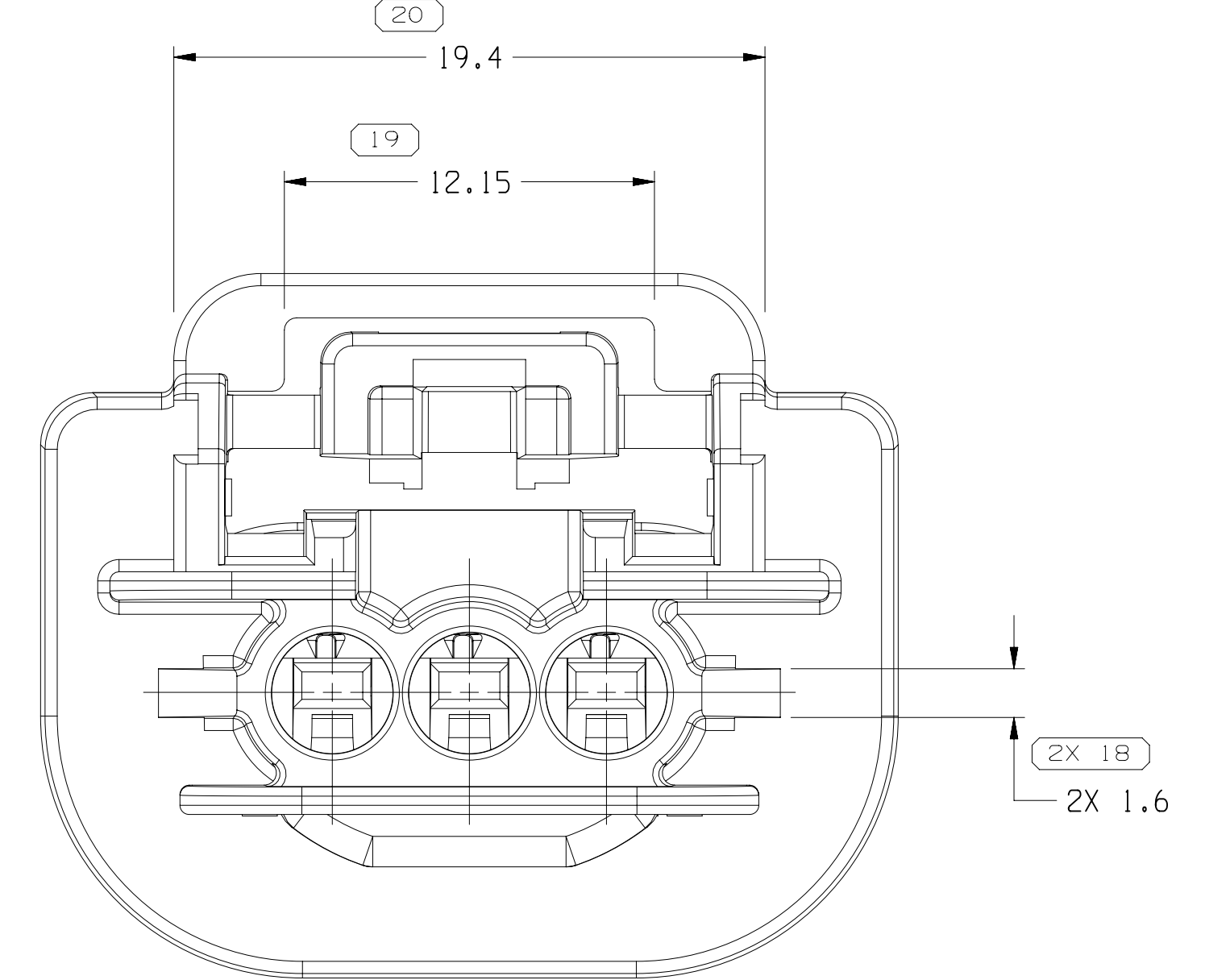


Q OF SEAL CAVITY



PLR - SEE CHART
(PRE-STAGED POSITION)

CONN SEAL - SEE CHART



NOTES

- UNLESS OTHERWISE SPECIFIED AND/OR INDICATED:
DIMENSIONS ARE TO FACE OF VIEW SHOWN AND
AUTOMATICALLY ROUNDED BY COMPUTER FOR INSPECTION
(SEE MATH MODEL FOR PRECISE DIMENSIONS). FOR ALL
OTHER DIMENSIONS NOT SHOWN BUT REQUIRED FOR TOOL
BUILD, SEE MATH MODEL FOR PRECISE TOOL PATH DATA.
- THIS PRODUCT IS NOT CATEGORIZED AS AN APPEARANCE ITEM, MINOR
IMPERFECTIONS INCLUDING, BUT NOT LIMITED TO, FLOW MARKS, COLOR
BLEMISHES, GATE VESTIGES, AND SOFT FLASH THAT DO NOT AFFECT THE
FIT, FORM, OR FUNCTION OF THE PART ARE PERMISSIBLE PER DRNP-4.7-CS-01.
- THIS PART IS NOT CONTROLLED FOR AUTOMATIC FEEDING.
- FOR APPLICATION DATA SEE THE INDIVIDUAL APPLICATION DRAWINGS.
- SEALING CODE TBD
- THIS CONNECTOR MEETS OR EXCEEDS SAE/USCAR-2 REV 4,
TERMINAL DISENGAGE CRITERIA WITH THE APPLICATION
OF A TERMINAL POSITION ASSURANCE (TPA) SECONDARY LOCK.

| PART | NO | REV | N/P | RESTRICTED USAGE | REPLACED BY | TYPE | CONNECTOR | MATERIAL | RECYCLING CODE | PLR | CONN SEAL |
|----------|----|-----|------------|------------------|-------------|----------|-----------|----------|-----------------------|----------|-----------|
| 13863706 | 01 | - | - | - | - | - | 108 | 13955983 | PLAS PBT GF20 | 15326810 | 15326811 |
| 13863707 | 01 | - | - | - | - | - | 102 | 13863706 | PLAS PBT GF20 | 15326810 | 15326811 |
| 15355377 | 02 | AL | RESTRICTED | 13511995 | 110 | 15355376 | 110 | 15355376 | PLAS PA6 GB20+GF10 HS | 15326810 | 15326811 |
| 13511995 | 01 | AE | - | - | - | - | 109 | 13511994 | PLAS PBT GF20 | 15326810 | 15326811 |
| 13511136 | 01 | AE | - | - | - | - | 108 | 13511130 | PLAS PBT GF20 | 15326810 | 15326811 |
| 13511135 | 01 | AE | - | - | - | - | 107 | 13511129 | PLAS PBT GF20 | 15326810 | 15326811 |
| 13511134 | 01 | AE | - | - | - | - | 106 | 13511128 | PLAS PBT GF20 | 15326810 | 15326811 |
| 13511133 | 01 | AE | - | - | - | - | 105 | 13511127 | PLAS PBT GF20 | 15326810 | 15326811 |
| 13511132 | 01 | AF | - | - | - | - | 104 | 13511126 | PLAS PBT GF20 | 15326810 | 15326811 |
| 13511131 | 01 | AF | - | - | - | - | 103 | 13511125 | PLAS PBT GF20 | 15326810 | 15326811 |
| 13511996 | 01 | AE | - | - | - | - | 102 | 13509896 | PLAS PBT GF20 | 15326810 | 15326811 |
| 15422250 | 01 | AL | RESTRICTED | 13511996 | 101 | 15419369 | 101 | 15419369 | PLAS PA6 GB20+GF10 HS | 15326810 | 15326811 |

CONNECTOR

MATERIAL

RECYCLING CODE

PLR

CONN SEAL

| PART | NO | REV | N/P | RESTRICTED USAGE | REPLACED BY | TYPE | CONNECTOR | MATERIAL | RECYCLING CODE | PLR | CONN SEAL |
|----------|----|-----|------------|------------------|-------------|----------|-----------|----------|-----------------------|----------|-----------|
| 13863706 | 01 | - | - | - | - | - | 108 | 13955983 | PLAS PBT GF20 | 15326810 | 15326811 |
| 13863707 | 01 | - | - | - | - | - | 102 | 13863706 | PLAS PBT GF20 | 15326810 | 15326811 |
| 15355377 | 02 | AL | RESTRICTED | 13511995 | 110 | 15355376 | 110 | 15355376 | PLAS PA6 GB20+GF10 HS | 15326810 | 15326811 |
| 13511995 | 01 | AE | - | - | - | - | 109 | 13511994 | PLAS PBT GF20 | 15326810 | 15326811 |
| 13511136 | 01 | AE | - | - | - | - | 108 | 13511130 | PLAS PBT GF20 | 15326810 | 15326811 |
| 13511135 | 01 | AE | - | - | - | - | 107 | 13511129 | PLAS PBT GF20 | 15326810 | 15326811 |
| 13511134 | 01 | AE | - | - | - | - | 106 | 13511128 | PLAS PBT GF20 | 15326810 | 15326811 |
| 13511133 | 01 | AE | - | - | - | - | 105 | 13511127 | PLAS PBT GF20 | 15326810 | 15326811 |
| 13511132 | 01 | AF | - | - | - | - | 104 | 13511126 | PLAS PBT GF20 | 15326810 | 15326811 |
| 13511131 | 01 | AF | - | - | - | - | 103 | 13511125 | PLAS PBT GF20 | 15326810 | 15326811 |
| 13511996 | 01 | AE | - | - | - | - | 102 | 13509896 | PLAS PBT GF20 | 15326810 | 15326811 |
| 15422250 | 01 | AL | RESTRICTED | 13511996 | 101 | 15419369 | 101 | 15419369 | PLAS PA6 GB20+GF10 HS | 15326810 | 15326811 |

CONNECTOR

MATERIAL

RECYCLING CODE

PLR

CONN SEAL

| PART | NO | REV | N/P | RESTRICTED USAGE | REPLACED BY | TYPE | CONNECTOR | MATERIAL | RECYCLING CODE | PLR | CONN SEAL |
|----------|----|-----|------------|------------------|-------------|----------|-----------|----------|-----------------------|----------|-----------|
| 13863706 | 01 | - | - | - | - | - | 108 | 13955983 | PLAS PBT GF20 | 15326810 | 15326811 |
| 13863707 | 01 | - | - | - | - | - | 102 | 13863706 | PLAS PBT GF20 | 15326810 | 15326811 |
| 15355377 | 02 | AL | RESTRICTED | 13511995 | 110 | 15355376 | 110 | 15355376 | PLAS PA6 GB20+GF10 HS | 15326810 | 15326811 |
| 13511995 | 01 | AE | - | - | - | - | 109 | 13511994 | PLAS PBT GF20 | 15326810 | 15326811 |
| 13511136 | 01 | AE | - | - | - | - | 108 | 13511130 | PLAS PBT GF20 | 15326810 | 15326811 |
| 13511135 | 01 | AE | - | - | - | - | 107 | 13511129 | PLAS PBT GF20 | 15326810 | 15326811 |
| 13511134 | 01 | AE | - | - | - | - | 106 | 13511128 | PLAS PBT GF20 | 15326810 | 15326811 |
| 13511133 | 01 | AE | - | - | - | - | 105 | 13511127 | PLAS PBT GF20 | 15326810 | 15326811 |
| 13511132 | 01 | AF | - | - | - | - | 104 | 13511126 | PLAS PBT GF20 | 15326810 | 15326811 |
| 13511131 | 01 | AF | - | - | - | - | 103 | 13511125 | PLAS PBT GF20 | 15326810 | 15326811 |
| 13511996 | 01 | AE | - | - | - | - | 102 | 13509896 | PLAS PBT GF20 | 15326810 | 15326811 |
| 15422250 | 01 | AL | RESTRICTED | 13511996 | 101 | 15419369 | 101 | 15419369 | PLAS PA6 GB20+GF10 HS | 15326810 | 15326811 |

CONNECTOR

MATERIAL

RECYCLING CODE

PLR

CONN SEAL

| PART | NO | REV | N/P | RESTRICTED USAGE | REPLACED BY | TYPE | CONNECTOR | MATERIAL | RECYCLING CODE | PLR | CONN SEAL |
|----------|----|-----|------------|------------------|-------------|----------|-----------|----------|-----------------------|----------|-----------|
| 13863706 | 01 | - | - | - | - | - | 108 | 13955983 | PLAS PBT GF20 | 15326810 | 15326811 |
| 13863707 | 01 | - | - | - | - | - | 102 | 13863706 | PLAS PBT GF20 | 15326810 | 15326811 |
| 15355377 | 02 | AL | RESTRICTED | 13511995 | 110 | 15355376 | 110 | 15355376 | PLAS PA6 GB20+GF10 HS | 15326810 | 15326811 |
| 13511995 | 01 | AE | - | - | - | - | 109 | 13511994 | PLAS PBT GF20 | 15326810 | 15326811 |
| 13511136 | 01 | AE | - | - | - | - | 108 | 13511130 | PLAS PBT GF20 | 15326810 | 15326811 |
| 13511135 | 01 | AE | - | - | - | - | 107 | 13511129 | PLAS PBT GF20 | 15326810 | 15326811 |
| 13511134 | 01 | AE | - | - | - | - | 106 | 13511128 | PLAS PBT GF20 | 15326810 | 15326811 |
| 13511133 | 01 | AE | - | - | - | - | 105 | 13511127 | PLAS PBT GF20 | 15326810 | 15326811 |
| 13511132 | 01 | AF | - | - | - | - | 104 | 13511126 | PLAS PBT GF20 | 15326810 | 15326811 |
| 13511131 | 01 | AF | - | - | - | - | 103 | 13511125 | PLAS PBT GF20 | 15326810 | 15326811 |
| 13511996 | 01 | AE | - | - | - | - | 102 | 13509896 | PLAS PBT GF20 | 15326810 | 15326811 |
| 15422250 | 01 | AL | RESTRICTED | 13511996 | 101 | 15419369 | 101 | 15419369 | PLAS PA6 GB20+GF10 HS | 15326810 | 15326811 |

CONNECTOR

MATERIAL

RECYCLING CODE

PLR

CONN SEAL

| PART | NO | REV | N/P | RESTRICTED USAGE | REPLACED BY | TYPE | CONNECTOR | MATERIAL | RECYCLING CODE | PLR | CONN SEAL |
|----------|----|-----|------------|------------------|-------------|----------|-----------|----------|-----------------------|----------|-----------|
| 13863706 | 01 | - | - | - | - | - | 108 | 13955983 | PLAS PBT GF20 | 15326810 | 15326811 |
| 13863707 | 01 | - | - | - | - | - | 102 | 13863706 | PLAS PBT GF20 | 15326810 | 15326811 |
| 15355377 | 02 | AL | RESTRICTED | 13511995 | 110 | 15355376 | 110 | 15355376 | PLAS PA6 GB20+GF10 HS | 15326810 | 15326811 |
| 13511995 | 01 | AE | - | - | - | - | 109 | 13511994 | PLAS PBT GF20 | 15326810 | 15326811 |
| 13511136 | 01 | AE | - | - | - | - | 108 | 13511130 | PLAS PBT GF20 | 15326810 | 15326811 |
| 13511135 | 01 | AE | - | - | - | - | 107 | 13511129 | PLAS PBT GF20 | 15326810 | 15326811 |
| 13511134 | 01 | AE | - | - | - | - | 106 | 13511128 | PLAS PBT GF20 | 15326810 | 15326811 |
| 13511133 | 01 | AE | - | - | - | - | 105 | 13511127 | PLAS PBT GF20 | 15326810 | 15326811 |
| 13511132 | 01 | AF | - | - | - | - | 104 | 13511126 | PLAS PBT GF20 | 15326810 | 15326811 |
| 13511131 | 01 | AF | - | - | - | - | 103 | 13511125 | PLAS PBT GF20 | 15326810 | 15326811 |
| 13511996 | 01 | AE | - | - | - | - | 102 | 13509896 | PLAS PBT GF20 | 15326810 | 15326811 |
| 15422250 | 01 | AL | RESTRICTED | 13511996 | 101 | 15419369 | 101 | 15419369 | PLAS PA6 GB20+GF10 HS | 15326810 | 15326811 |

CONNECTOR

MATERIAL

RECYCLING CODE

PLR

CONN SEAL

| PART | NO | REV | N/P | RESTRICTED USAGE | REPLACED BY | TYPE | CONNECTOR | MATERIAL | RECYCLING CODE | PLR | CONN SEAL |
|----------|----|-----|------------|------------------|-------------|----------|-----------|----------|-----------------------|----------|-----------|
| 13863706 | 01 | - | - | - | - | - | 108 | 13955983 | PLAS PBT GF20 | 15326810 | 15326811 |
| 13863707 | 01 | - | - | - | - | - | 102 | 13863706 | PLAS PBT GF20 | 15326810 | 15326811 |
| 15355377 | 02 | AL | RESTRICTED | 13511995 | 110 | 15355376 | 110 | 15355376 | PLAS PA6 GB20+GF10 HS | 15326810 | 15326811 |
| 13511995 | 01 | AE | - | - | - | - | 109 | 13511994 | PLAS PBT GF20 | 15326810 | 15326811 |
| 13511136 | 01 | AE | - | - | - | - | 108 | 13511130 | PLAS PBT GF20 | 15326810 | 15326811 |
| 13511135 | 01 | AE | - | - | - | - | 107 | 13511129 | PLAS PBT GF20 | 15326810 | 15326811 |
| 13511134 | 01 | AE | - | - | - | - | 106 | 13511128 | PLAS PBT GF20 | 15326810 | 15326811 |
| 13511133 | 01 | AE | - | - | - | - | 105 | 13511127 | PLAS PBT GF20 | 15326810 | 15326811 |
| 13511132 | 01 | AF | - | - | - | - | 104 | 13511126 | PLAS PBT GF20 | 15326810 | 15326811 |
| 13511131 | 01 | AF | - | - | - | - | 103 | 13511125 | PLAS PBT GF20 | 15326810 | 15326811 |
| 13511996 | 01 | AE | - | - | - | - | 102 | 13509896 | PLAS PBT GF20 | 15326810 | 15326811 |
| 15422250 | 01 | AL | RESTRICTED | 13511996 | 101 | 15419369 | 101 | 15419369 | PLAS PA6 GB20+GF10 HS | 15326810 | 15326811 |

CONNECTOR

MATERIAL

RECYCLING CODE

PLR

CONN SEAL

| PART | NO | REV | N/P | RESTRICTED USAGE | REPLACED BY | TYPE | CONNECTOR | MATERIAL | RECYCLING CODE | PLR | CONN SEAL |
|----------|----|-----|-----|------------------|-------------|------|-----------|----------|----------------|----------|-----------|
| 13863706 | 01 | - | - | - | - | - | 108 | 13955983 | PLAS PBT GF20 | 15326810 | 15326811 |
| 13863707 | 01 | - | - | - | - | - | 102 | 13863706 | PLAS PBT GF20 | 15326810 | 15326811 |

Mouser Electronics

Authorized Distributor

Click to View Pricing, Inventory, Delivery & Lifecycle Information:

[Aptiv:](#)
[15422250](#)