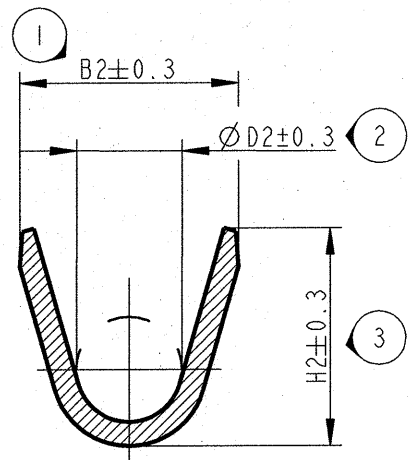
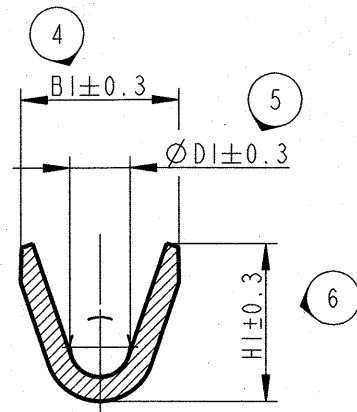


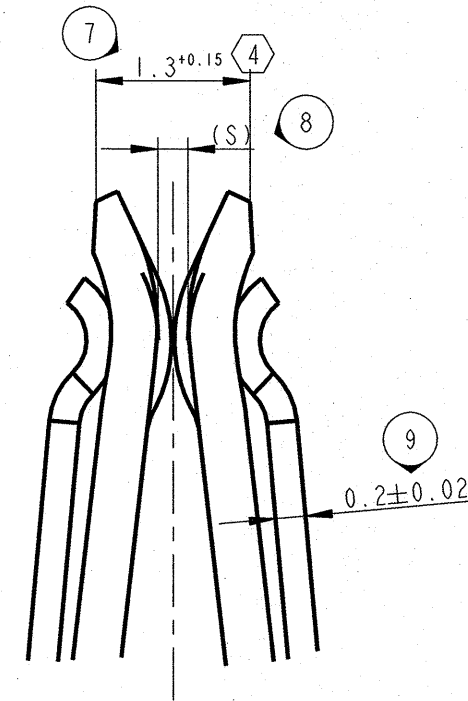
A-A
10:1



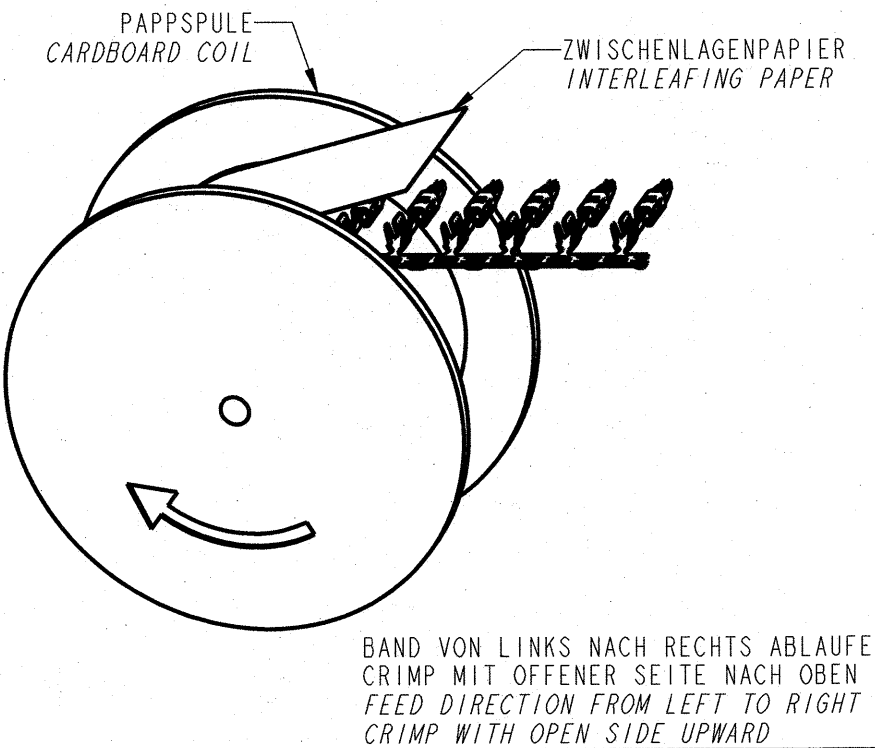
B-B
10:1



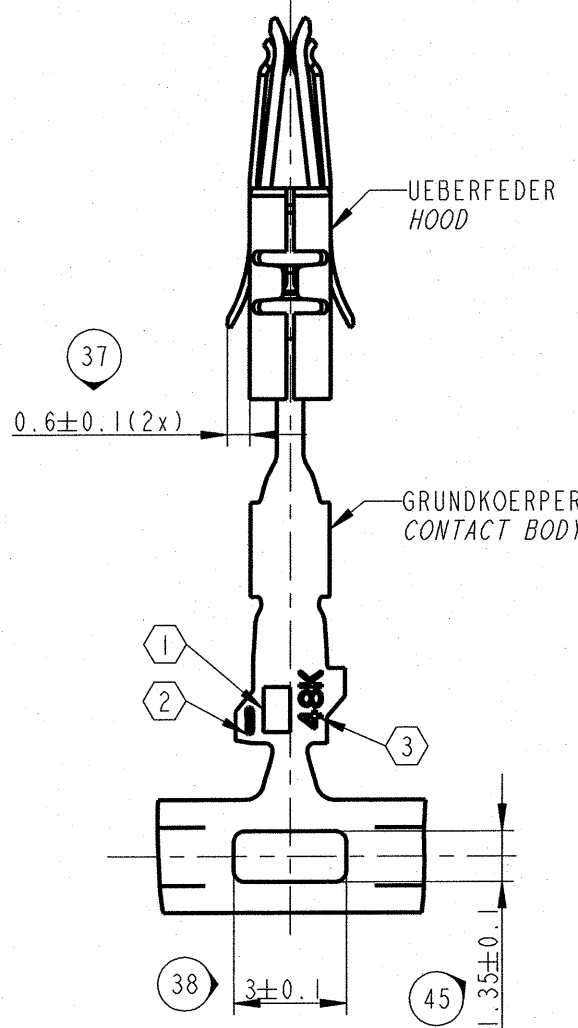
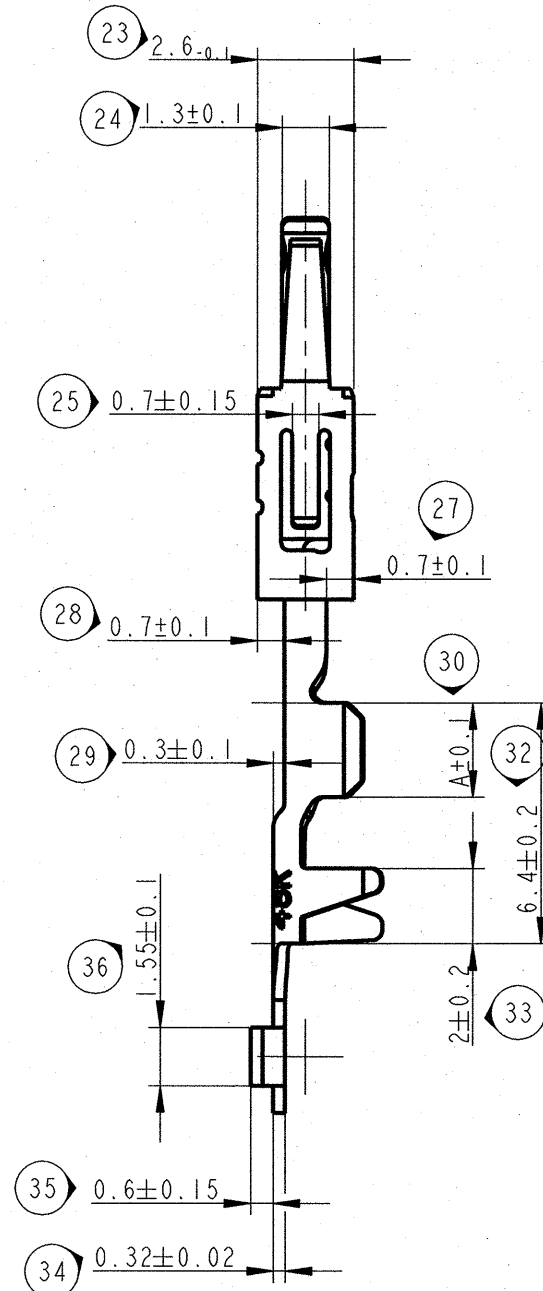
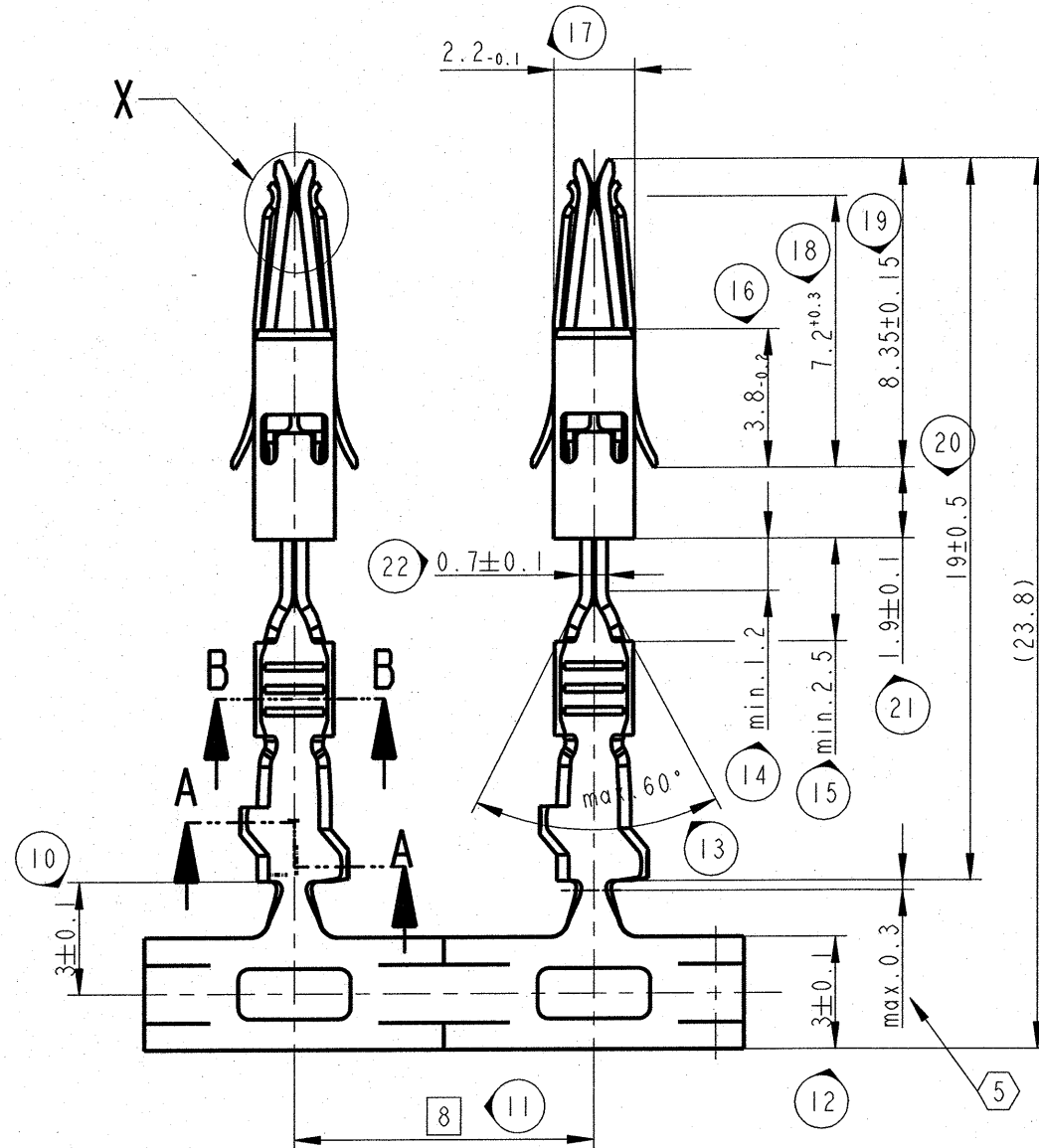
X
20:1



LIEFERZUSTAND NICHT MASSSTAEBLICH
DELIVERY CONDITION (DO NOT SCALE)

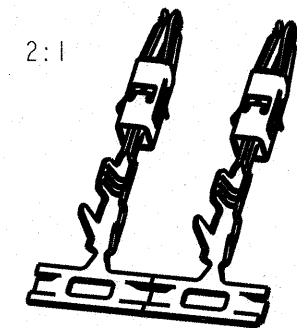


BAND VON LINKS NACH RECHTS ABFLAUEND
CRIMP MIT OFFENER SEITE NACH OBEN
FEED DIRECTION FROM LEFT TO RIGHT
CRIMP WITH OPEN SIDE UPWARD

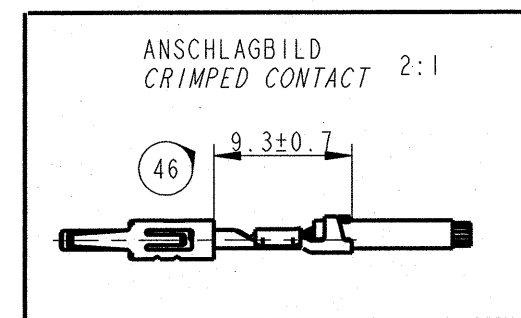


BEMERKUNGEN / NOTES

- ① MVL-FIRMENZEICHEN / MVL-SUPPLIER CODE
 - ② TEILE CODE / PART-CODE
 - ③ WOCHE UND JAHR DER HERSTELLUNG
WEEK AND YEAR OF PRODUCTION
 - ④ MASS OHNE LUFTSPALT GEMESSEN
DIMENSION MEASURE WITHOUT GAP
 - ⑤ MASS GILT NUR FUER KABELKONFEKTIONAER
DIMENSION ONLY FOR HARNESSMAKER
- ABWEICHUNGEN VON DER BILDLICHEN DARSTELLUNG
IM BEREICH DER UEBERFEDER ZULAESSIG
DEVIATIONS FROM THE FIGURATIVE REPRESENTATION
ARE PERMISSIBLE IN THE RANGE OF HOOD
- SPULEN HORIZONTAL TRANSPORTIEREN UND LAGERN!
HALTESTREIFEN UNTEN!
REELS TRANSPORTED AND STORED HORIZONTAL!
RETAINING STRIP DOWN!
- FUER FLACHSTECKER / FOR MALE TERMINAL:
0.6±0.07 x 1.6±0.1 // 0.8±0.03 x 1.6±0.2
MIT OBERFLAECHE / WITH FINISH
1-3µm Sn // MIN.0.8 µm Au AUFION 1.3-2µm Ni
ZUGEOERIGE KAMMER / REFERENCE CAVITY:
9 000 03 00 (PIN 0.6mm) // 9 000 19 00 (PIN 0.8mm)
FUEER LEITUNGEN / FOR CABLE: FLRY DIN 72551-6
- AENDERUNGEN, DIE DEM TECHNISCHEN FORTSCHRITT DIENEN.
BEHALTEN WIR UNS VOR ! / CHANGES BASED ON TECHNICAL
PROGRESS ARE IN THE DECISION OF THE MANUFACTURER !**



F888000	33504757	1.5 x 0.8	>1.0-1.5	3K	1.27µm Au	CuSn4 R540	X10CrNi18-8 NACH/ ACC. DIN EN 10151	0.3 ^{+0.25}	3.0	1.4	3.1	3.7	2.4	3.8	3.0
6 000 13 44	33504754	1.5 x 0.6		3E	1.27µm Au	CuSn4 R540		0.2 ^{+0.25}							
F788000	33504756	1.5 x 0.8		3H	0.8µm Au	CuSn4 R540		0.3 ^{+0.25}							
6 000 05 44	33504753	1.5 x 0.6		3D	0.8µm Au	CuSn4 R540		0.2 ^{+0.25}							
F688000	33511725	1.5 x 0.8		3T	1-3µm FEUERVERZINNT 1-3µm HOT TIN DIP	CuFe2P R470		0.2 ^{+0.25}							
6 000 05 41	10769219	1.5 x 0.6		3L		CuFe2P R470		0 ^{+0.1}							
F588000	33504752	1.5 x 0.8	0.5-1.0	2K	1.27µm Au	CuSn4 R540		0.3 ^{+0.25}	2.5	1.2	2.7	3.2	1.8	3.4	3.0
6 000 13 34	33504750	1.5 x 0.6		2E	1.27µm Au	CuSn4 R540		0.2 ^{+0.25}							
F488000	33504751	1.5 x 0.8		2H	0.8µm Au	CuSn4 R540		0.3 ^{+0.25}							
6 000 05 34	10751587	1.5 x 0.6		2D	0.8µm Au	CuSn4 R540		0.2 ^{+0.25}							
F388000	33511724	1.5 x 0.8		2T	1-3µm FEUERVERZINNT 1-3µm HOT TIN DIP	CuFe2P R470		0.2 ^{+0.25}							
6 000 05 31	15380673	1.5 x 0.6		2L		CuFe2P R470		0 ^{+0.1}							
F288000	33504749	1.5 x 0.8	>0.20-0.35	1K	1.27µm Au	CuSn4 R540	0.3 ^{+0.25}	2.1	0.8	2.1	2.9	1.4	2.9	2.5	
6 000 13 14	33504747	1.5 x 0.6		1E	1.27µm Au	CuSn4 R540	0.2 ^{+0.25}								
F188000	33504748	1.5 x 0.8		1H	0.8µm Au	CuSn4 R540	0.3 ^{+0.25}								
6 000 05 14	10751588	1.5 x 0.6		1D	0.8µm Au	CuSn4 R540	0.2 ^{+0.25}								
F088000	33511723	1.5 x 0.8		1T	1-3µm FEUERVERZINNT 1-3µm HOT TIN DIP	CuFe2P R470	0.2 ^{+0.25}								
6 000 05 11	10763182	1.5 x 0.6		1L		CuFe2P R470	0 ^{+0.1}								
MVL TEILE-NR. MVL PART NO.	DELPHI TEILE-NR. DELPHI PART NO.	ZUGEH.PIN FOR PIN	CRIMP- GROESSE CRIMP SIZE (mm ²)	TEILE CODE PART CODE	OBERFLAECHE SURFACE FINISH	GRUNDKOEPPER CONTACT BODY	UEBERFEDER HOOD	(S)	B1	D1	H1	B2	D2	H2	A
MATERIAL								MASSE / DIMENSIONS							



14-10262	17.11.14	H	ACII	DELPHI P/N ADDED	Weiss	Mueller	Urnstein
055/08	07.02.08	G05	-	NEUE VARIANTEN HINZU			
327/06	09.05.06	F04	-	UEBERARBEITUNG / PRO-E DATEI			
ECN-NO. ECN NUMBER	DATE / DD / MM / YY DATUM	REVISION INDEX	POSITION POSITION	CHANGE DESCRIPTION ÄNDERUNG	DRAWN BY GEZ.	CHK. BY GEPR.	APPR. BY GEW.
PRODUCT SPEC. PRODUCT SPECIFIK.	PACKAGING SPEC. VERPACKUNGSS SPECIFIK.	APPLICATION SPEC. ANWENDUNGS SPECIFIK.	COPYRIGHT DELPHI CORPORATION AND/OR ITS AFFILIATES. ALL RIGHTS RESERVED. REVISED THIS DRAWING IS THE PROPERTY OF DELPHI CORPORATION. THE REPRODUCTION, DISTRIBUTION AND UTILIZATION OF THIS DOCUMENT OR ITS RELATED CAD DATA, AS WELL AS COMMUNICATION OF ANY CONTENT TO OTHERS, WITHOUT EXPRESS AUTHORIZATION IS PROHIBITED.				
TOLERANCES DIN ISO 2768-TH TOLERANZEN DIN ISO 1101 MASSE <0.5 : ±0.05	MATERIAL : -- MATERIAL : --	SURFACE FINISH OBERFLAECHE	DELPHI				
COUNTERPART NO. GEGENSTUECK NR.	COLOUR : -- FARBE : --	TOOL NO. WERKZEUG NR.	ECO Loc. Code STANDORT CODE	ISO PROJECTION ISO PROJEKTION	DIMENSION IN MILLIMETERS BEMASSUNG IN MILLIMETERN	DRG SIZE FORMAT	CAD SYSTEM
DO NOT SCALE DRAWING ZEICHNUNG NICHT VERMESSEN	DATE DATUM	NAME NAME	FLACHKONTAKT DCS2-1.5 NORMALE ANWENDUNG FEMALE CONTACT DCS2-1.5 NORMAL APPLICATION				
DRAWN BY GEZ.	09.05.06	Sf. Mueller	6 000 05 11				
CHECKED BY GEPR.	09.05.06	S. WEISS	60000511C_G05				
APPROVED BY GEW.	09.05.06	M. HOPF	FILE NAME DATUM NAME				

Mouser Electronics

Authorized Distributor

Click to View Pricing, Inventory, Delivery & Lifecycle Information:

[Aptiv:](#)
[15380673](#)