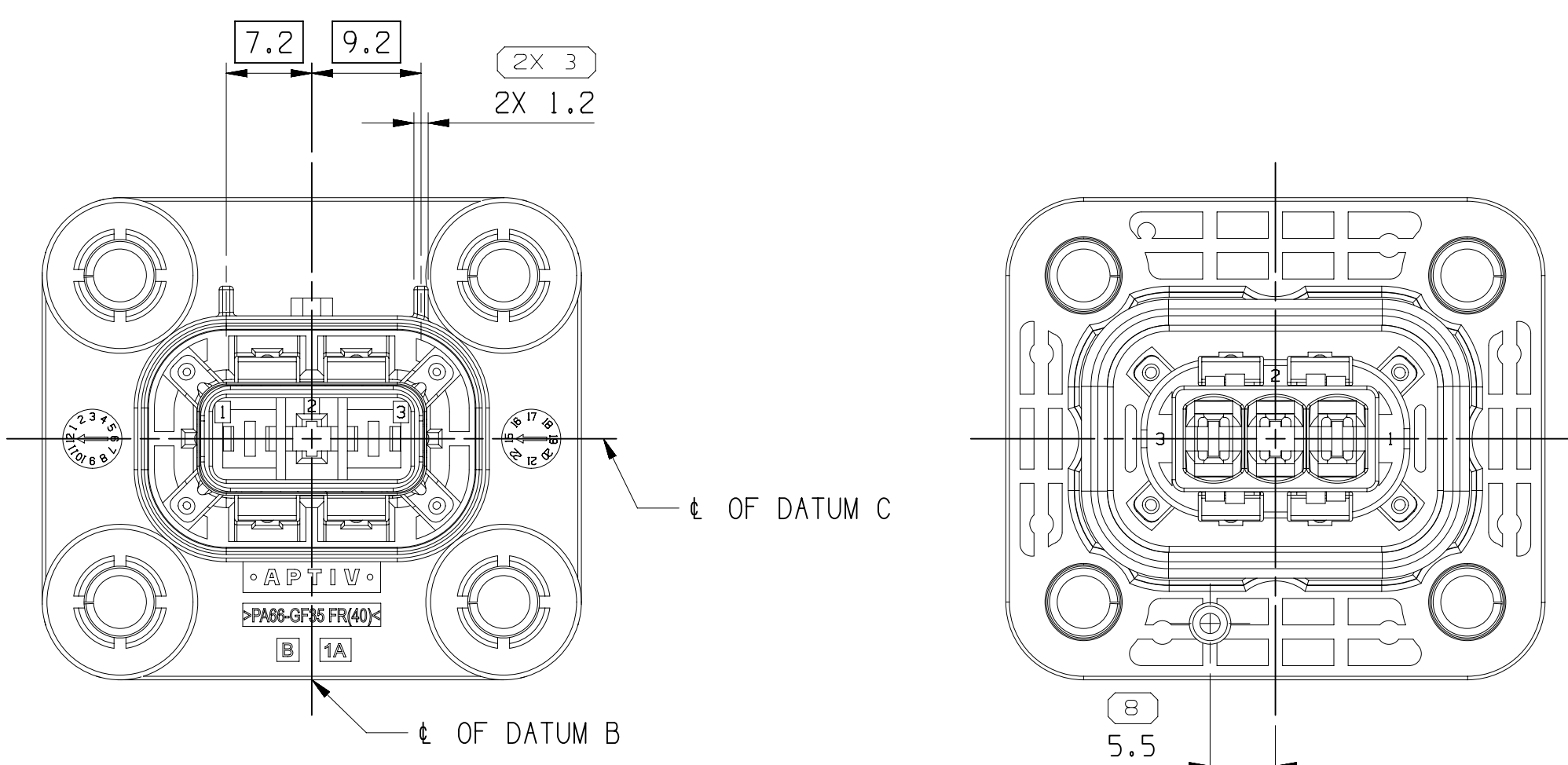
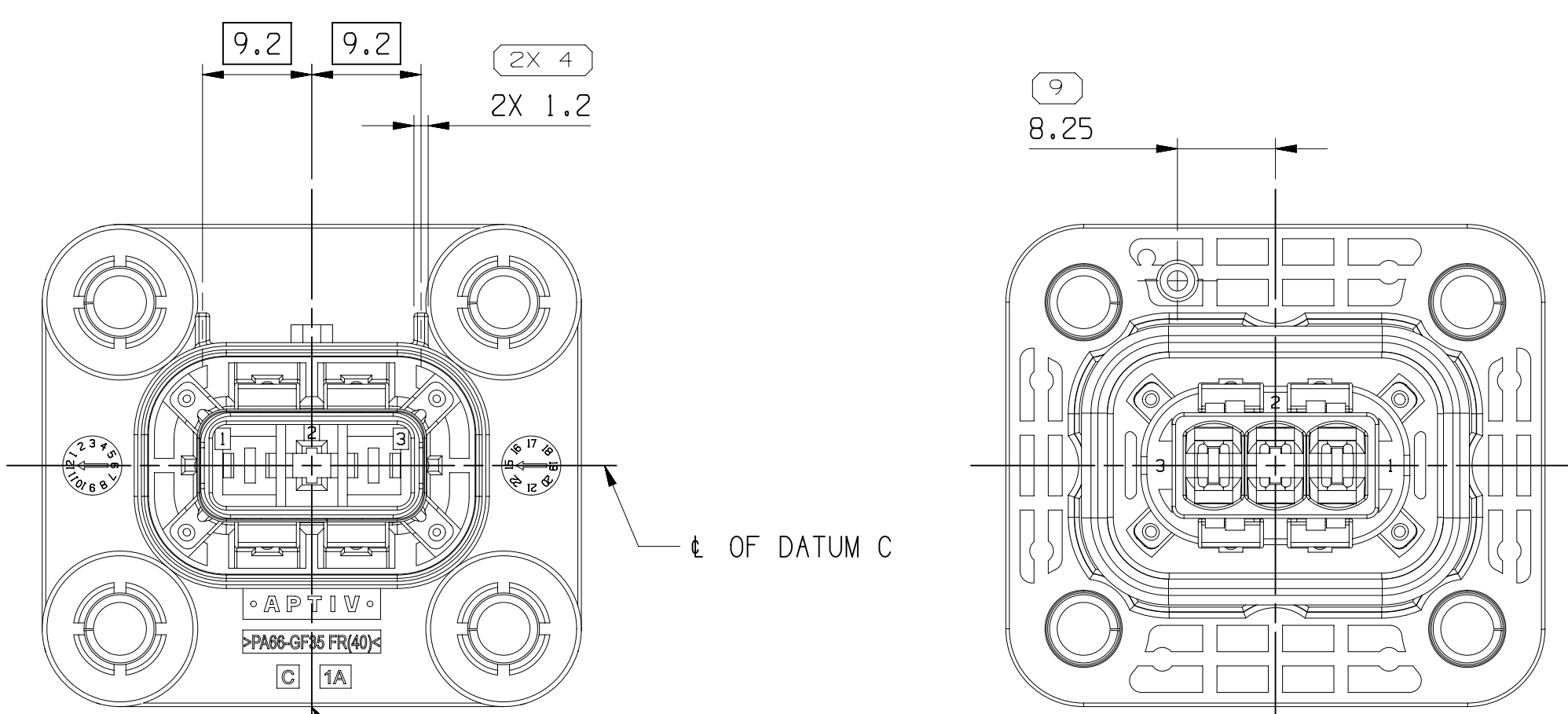


CODINGS INFORMATION

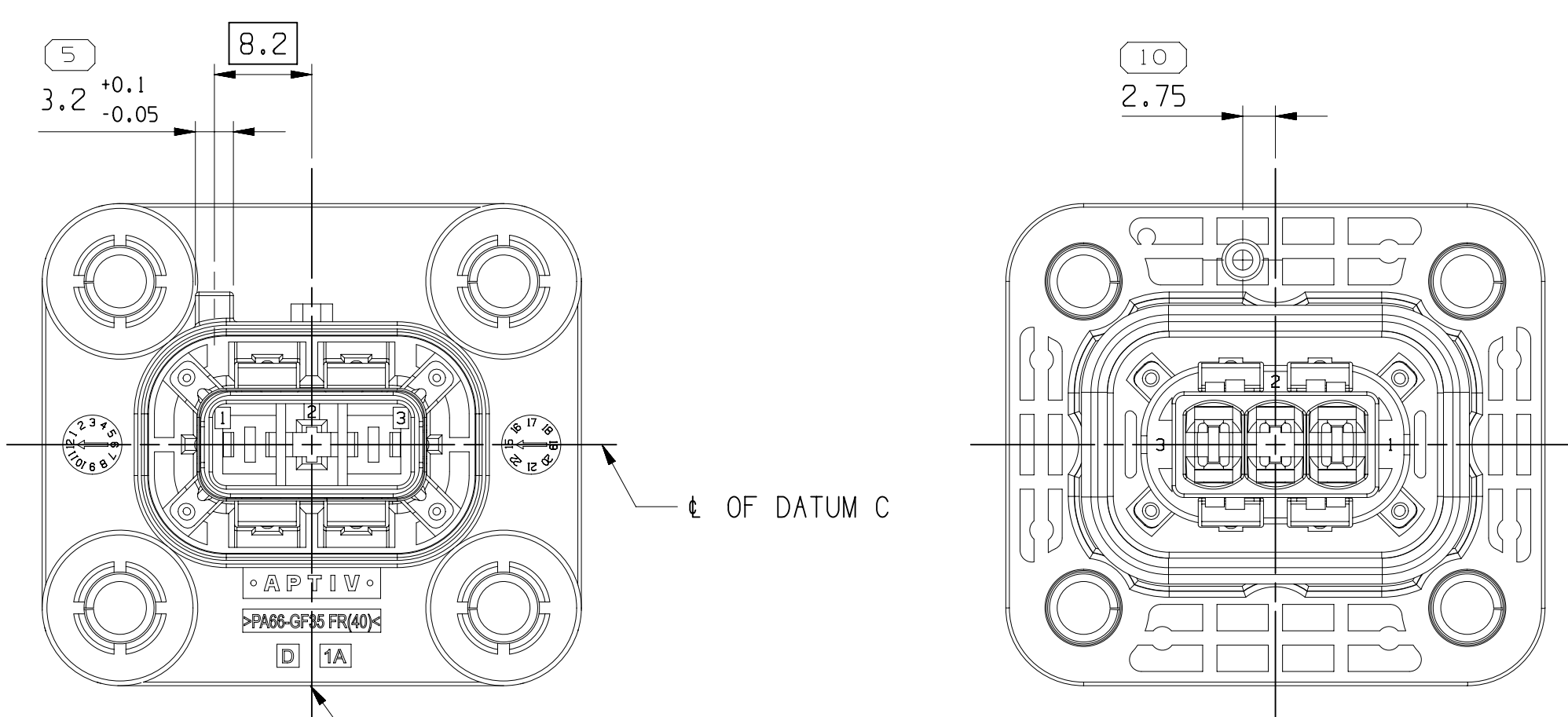
CODE A - (35149842)



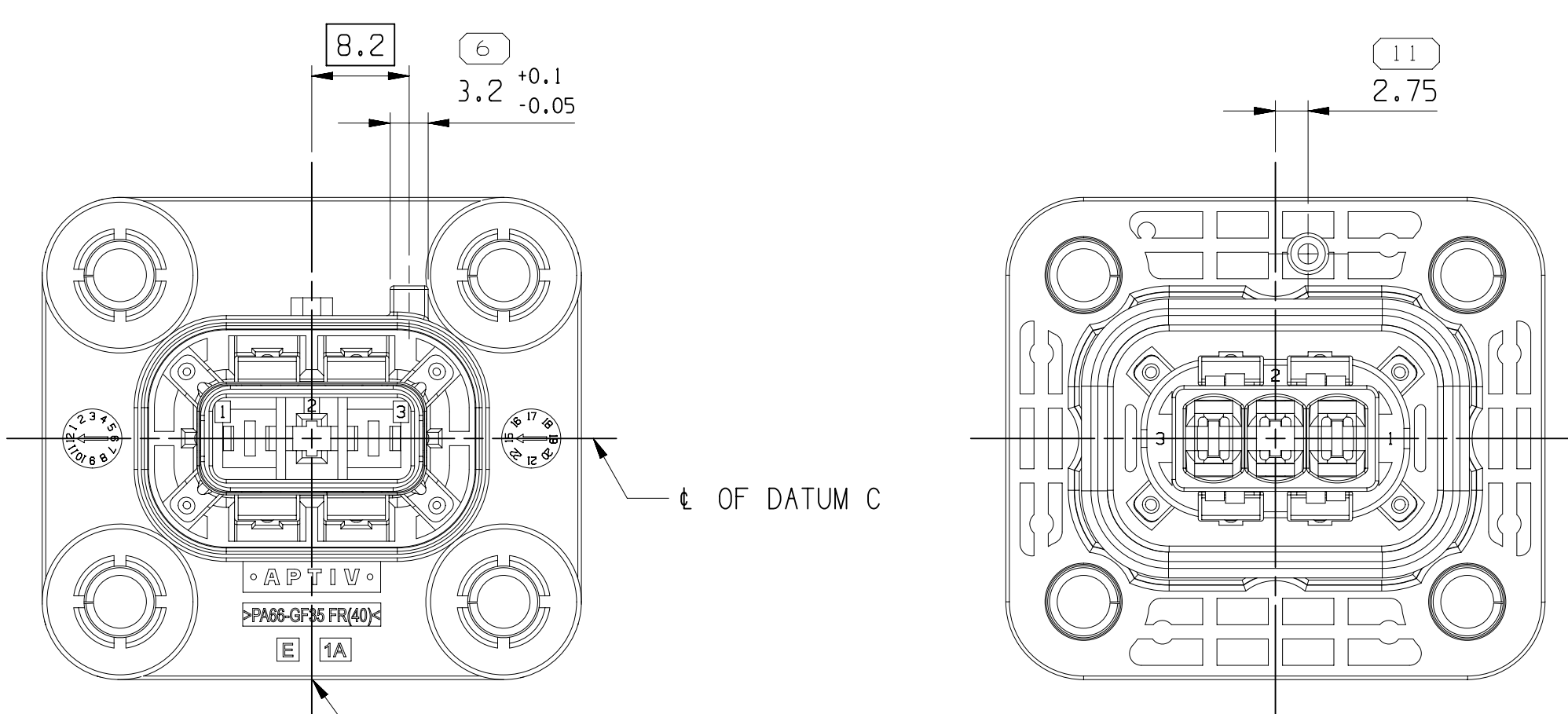
CODE B IS SAME AS CODE A EXCEPT AS SHOWN - (35149843)



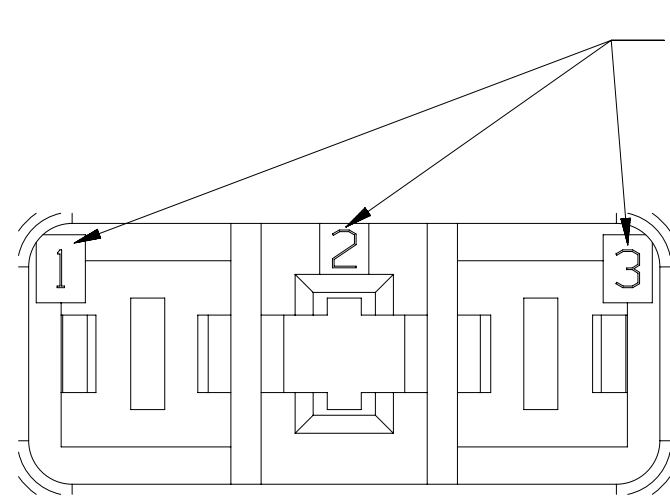
CODE C IS SAME AS CODE A EXCEPT AS SHOWN - (35149844)



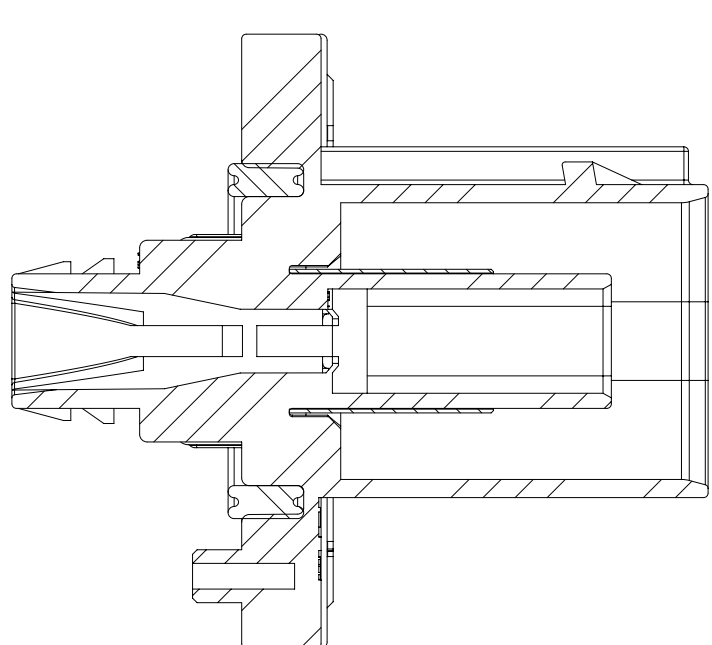
CODE D IS SAME AS CODE A EXCEPT AS SHOWN - (35149845)



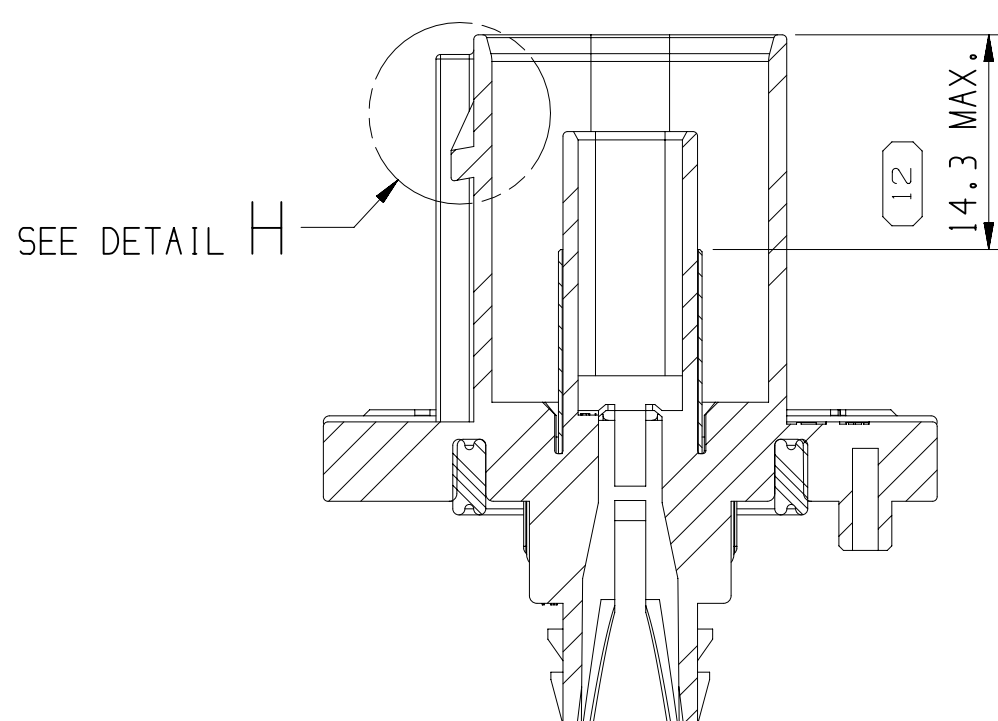
CODE E IS SAME AS CODE A EXCEPT AS SHOWN - (35149846)



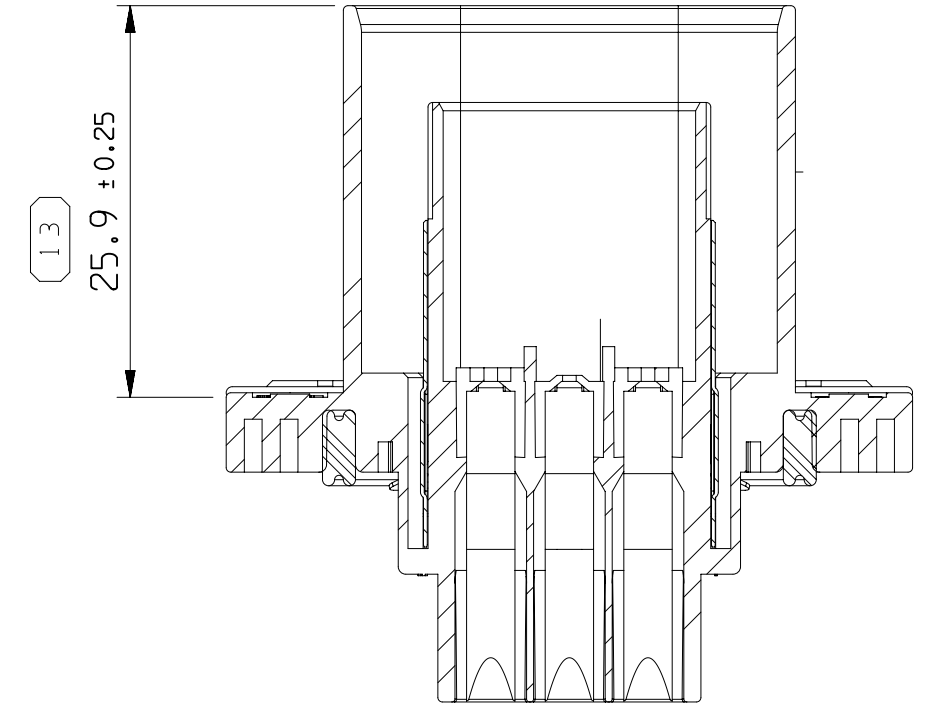
DETAIL E
SCALE 5:1



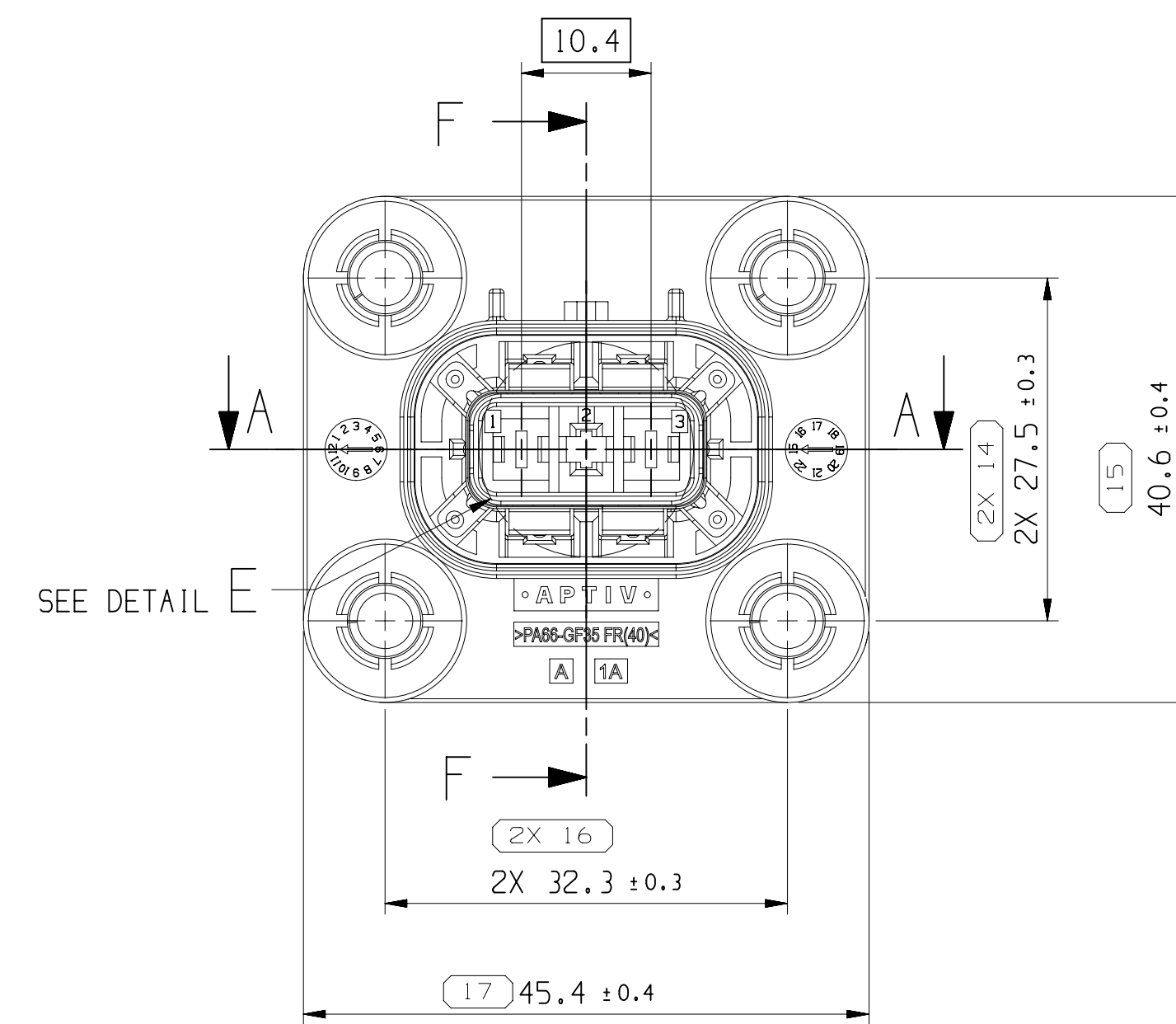
SECTION F-F



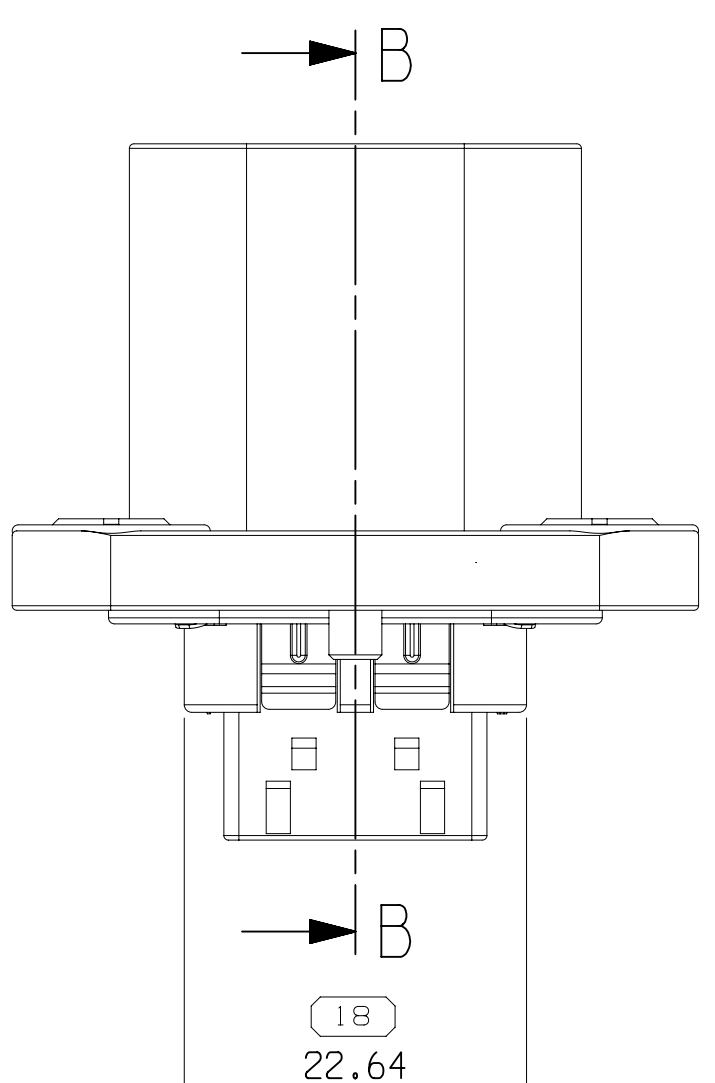
SECTION B-B



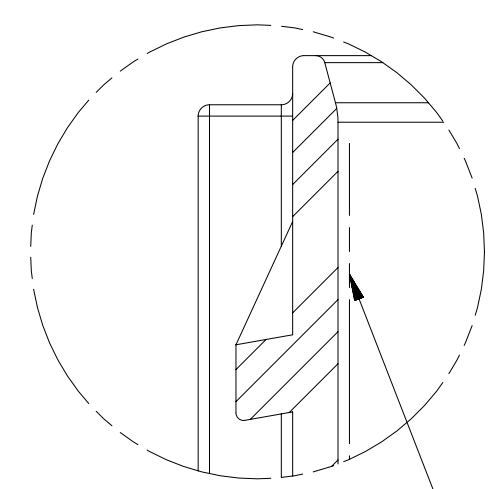
SECTION A-A



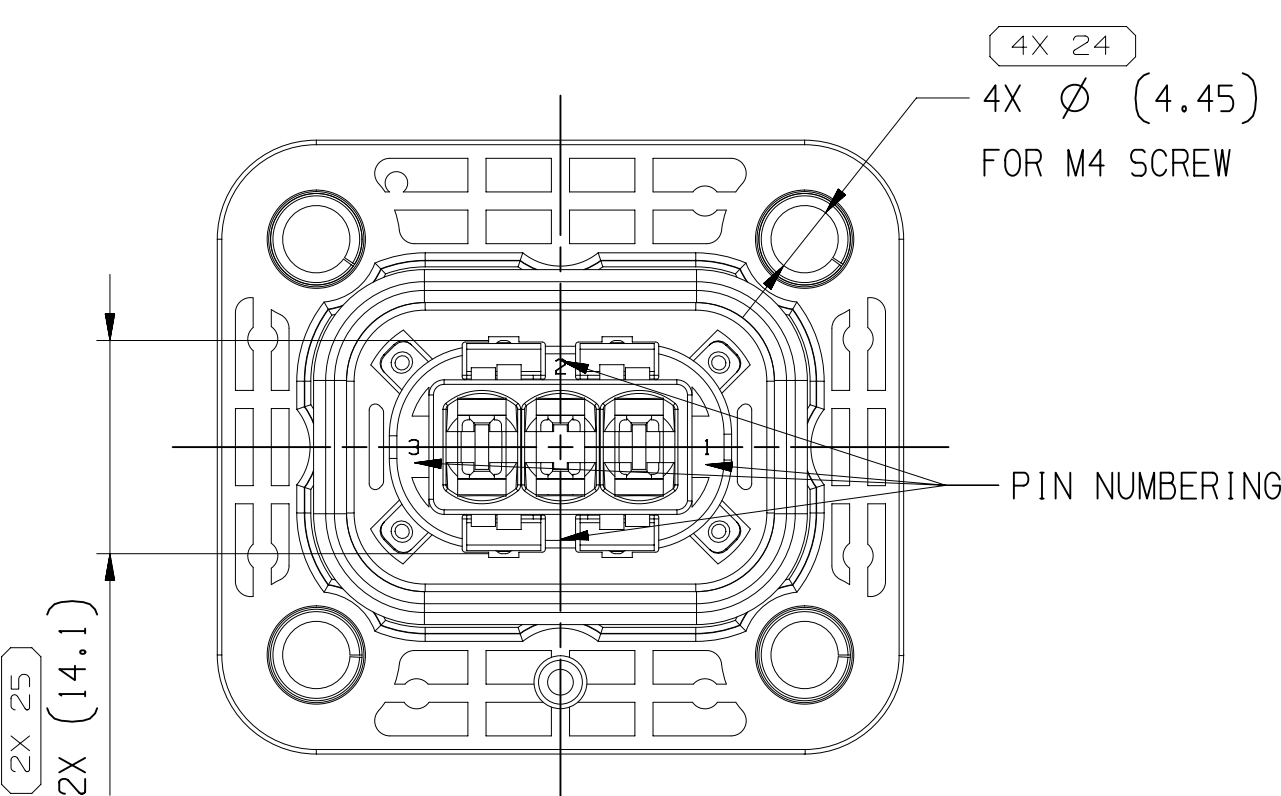
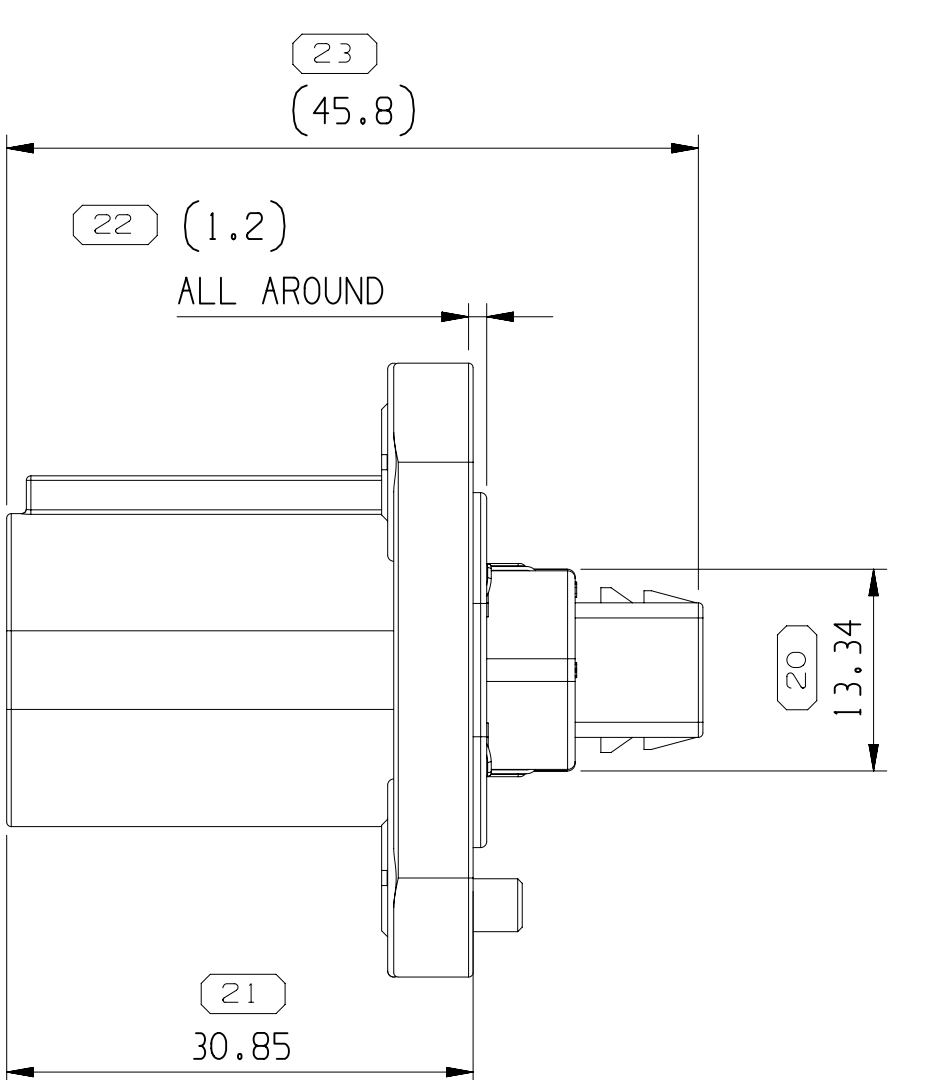
SEE DETAIL E



SECTION B-B



DETAIL H
SCALE 5:1



23
(45.8)

22
(1.2)

ALL AROUND

12.34

21

30.85

15

4X 4
(4.45)

FOR M4 SCREW

PIN NUMBERING

22
(14.1)

2X

15

40.6 ±0.4

2X 27.5 ±0.3

2X 16

2X 32.3 ±0.3

17 45.4 ±0.4

10.4

1.2

12.34

21

30.85

15

4X 4
(4.45)

FOR M4 SCREW

PIN NUMBERING

22
(14.1)

2X

15

40.6 ±0.4

2X 27.5 ±0.3

2X 16

2X 32.3 ±0.3

17 45.4 ±0.4

10.4

1.2

12.34

21

30.85

15

4X 4
(4.45)

FOR M4 SCREW

PIN NUMBERING

22
(14.1)

2X

15

40.6 ±0.4

2X 27.5 ±0.3

2X 16

2X 32.3 ±0.3

17 45.4 ±0.4

10.4

1.2

12.34

21

30.85

15

4X 4
(4.45)

FOR M4 SCREW

PIN NUMBERING

22
(14.1)

2X

15

40.6 ±0.4

2X 27.5 ±0.3

2X 16

2X 32.3 ±0.3

17 45.4 ±0.4

10.4

1.2

12.34

21

30.85

15

4X 4
(4.45)

FOR M4 SCREW

PIN NUMBERING

22
(14.1)

2X

15

40.6 ±0.4

2X 27.5 ±0.3

2X 16

2X 32.3 ±0.3

17 45.4 ±0.4

10.4

1.2

12.34

21

30.85

15

4X 4
(4.45)

FOR M4 SCREW

PIN NUMBERING

22
(14.1)

2X

15

40.6 ±0.4

2X 27.5 ±0.3

2X 16

2X 32.3 ±0.3

17 45.4 ±0.4

10.4

1.2

12.34

21

30.85

15

4X 4
(4.45)

FOR M4 SCREW

PIN NUMBERING

22
(14.1)

2X

15

40.6 ±0.4

2X 27.5 ±0.3

2X 16

2X 32.3 ±0.3

17 45.4 ±0.4

10.4

1.2

12.34

21

30.85

15

4X 4
(4.45)

FOR M4 SCREW

PIN NUMBERING

22
(14.1)

2X

15

40.6 ±0.4

2X 27.5 ±0.3

2X 16

2X 32.3 ±0.3

17 45.4 ±0.4

10.4

1.2

12.34

21

30.85

15

4X 4
(4.45)

FOR M4 SCREW

PIN NUMBERING

22
(14.1)

2X

15

40.6 ±0.4

2X 27.5 ±0.3

2X 16

2X 32.3 ±0.3

17 45.4 ±0.4

10.4

1.2

12.34

21

30.85

15

4X 4
(4.45)

FOR M4 SCREW

PIN NUMBERING

22
(14.1)

2X

15

40.6 ±0.4

2X 27.5 ±0.3

2X 16

2X 32.3 ±0.3

17 45.4 ±0.4

10.4

1.2

12.34

21

30.85

15

4X 4
(4.45)

FOR M4 SCREW

PIN NUMBERING

22
(14.1)

2X

15

40.6 ±0.4

2X 27.5 ±0.3

2X 16

2X 32.3 ±0.3

17 45.4 ±0.4

10.4

1.2

12.34

21

30.85

15

4X 4
(4.45)

FOR M4 SCREW

PIN NUMBERING

22
(14.1)

2X

15

40.6 ±0.4

2X 27.5 ±0.3

2X 16

2X 32.3 ±0.3

17 45.4 ±0.4

10.4

1.2

12.34

21

30.85

15

4X 4
(4.45)

FOR M4 SCREW

PIN NUMBERING

22
(14.1)

2X

15

40.6 ±0.4

2X 27.5 ±0.3

2X 16

2X 32.3 ±0.3

17 45.4 ±0.4

10.4

1.2

12.34

21

30.85

15

4X 4
(4.45)

FOR M4 SCREW

PIN NUMBERING

22
(14.1)

2X

15

40.6 ±0.4

2X 27.5 ±0.3

2X 16

2X 32.3 ±0.3

17 45.4 ±0.4

10.4

1.2

12.34

21

30.85

15

4X 4
(4.45)

FOR M4 SCREW

PIN NUMBERING

22
(14.1)

2X

15

40.6 ±0.4

2X 27.5 ±0.3

2X 16

2X 32.3 ±0.3

17 45.4 ±0.4

10.4

1.2

12.34

21

30.85

15

4X 4
(4.45)

FOR M4 SCREW

PIN NUMBERING

22
(14.1)

Mouser Electronics

Authorized Distributor

Click to View Pricing, Inventory, Delivery & Lifecycle Information:

[Aptiv:](#)

[35149842](#)