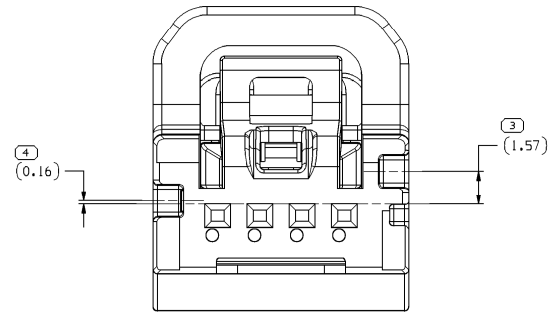
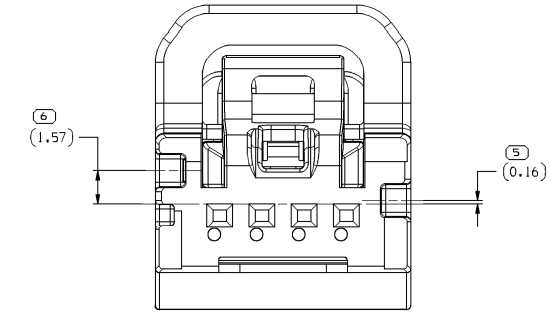


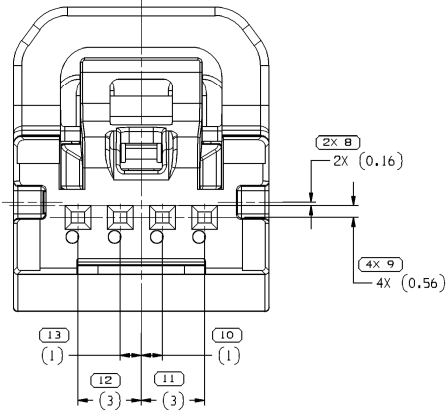
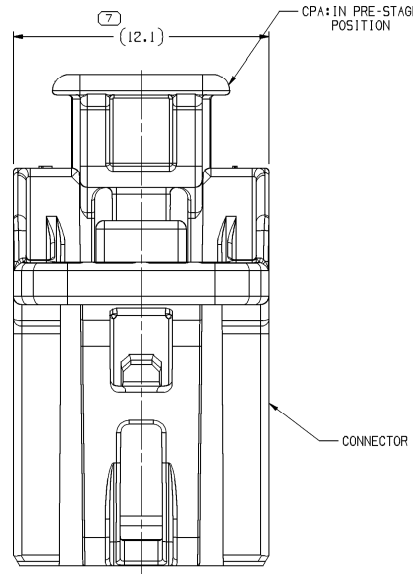
TYPE 102
SAME AS TYPE 101
EXCEPT AS SHOWN



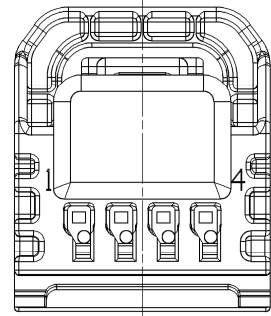
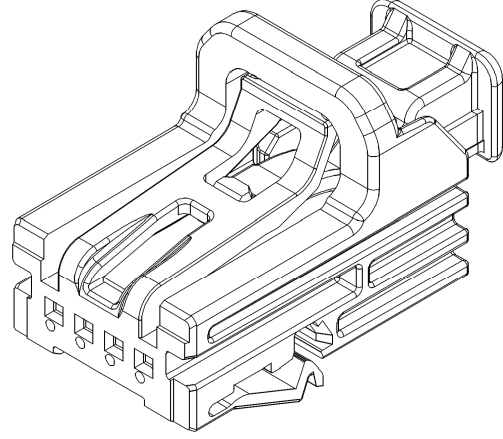
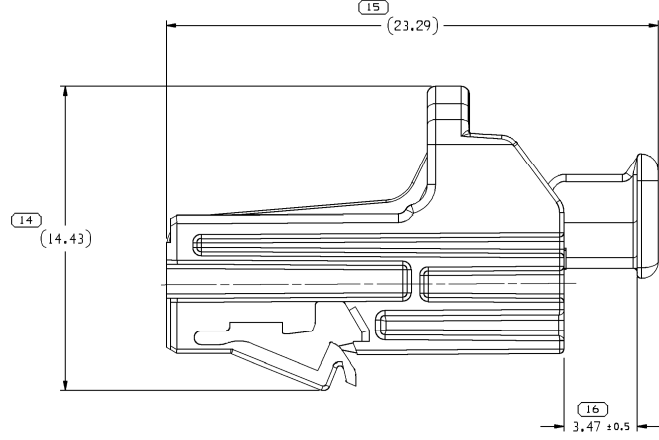
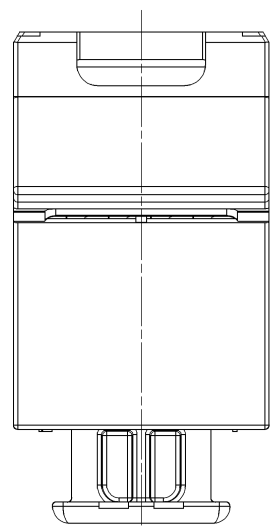
TYPE 103
SAME AS TYPE 101
EXCEPT AS SHOWN



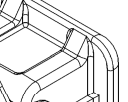
TYPE 104
SAME AS TYPE 101
EXCEPT AS SHOWN



TYPE 101



SYMBOL DEFINITION		
A DIMENSION WITHOUT AN INSPECTION REPORT SYMBOL DOES NOT REQUIRE INSPECTION. IT MAY BE CONTROLLED ON THE INDIVIDUAL COMPONENT DRAWING.		
TOTAL NO OF INSPECTIONS REQUIRED	20	
LAST NO. USED	16	

MISSING SYMBOLS		DWG STATUS				ZONE	REVISION HISTORY			AUTH	DR	APV	APV2
NO MISSING SYMBOL NUMBER		DATE	STG	REV	N/P		CHG						
	18SE15	U	01	-	-	-	WAS PE313782			430642	MB	MB	JDD
	14OC15	R	02	-	-	-	UPDATED PDM ATTRIBUTES, DIM 7 WAS 12.63, DIM 14 WAS 11.23, DIM 15 WAS 20.38			431093	JHG	JHG	JDD
	24MR16	R	03	-	-	-	CONNECTORS REVISED TO REV 03			432277	MB	MB	JDD
	10AU16	R	04	-	-	-	ALL PARTS - CPA WAS 332B3037, DIM #7 WAS 12.25, DIM #14 WAS 12.23 & DIM 15 WAS 20.61, ADDED DIM (1) PLOI & PSD AND UPDATED CONNECTOR TO LATEST: 332B3024 - UPDATED PART AVAILABILITY			433911	DCM	DCM	MAA
	12JUN17	R	05	-	-	-	ALL PARTS - REVISION 03AA WAS 04 FOR AUTH NUMBER 433911			436841	NKS	NKS	EH
	16AU17	R	06	-	-	-	ALL PARTS - REVISED GRAPHICS			437478	NKS	NKS	EH
	06OC17	R	07	-	-	-	ALL PARTS - UPDATED PDM ATTRIBUTES			437951	NKS	NKS	EH
	26FE18	R	08	-	-	-	ALL PARTS - PROCESS SENSITIVE DIMENSION WAS #16 AND ADDED "CPA POSITION" NOTE			439114	SM	SM	EH
	20AP18	R	09	-	-	-	ALL PARTS - UPDATED PART AVAILABILITY			439592	NKS	NKS	EH
	22JUN18	R	10	-	-	-	ALL PARTS - REVISED NOTE #03			440066	NKS	NKS	EG

NOTES

- UNLESS OTHERWISE SPECIFIED AND/OR INDICATED: DIMENSIONS ARE TO FACE OF VIEW SHOWN AND AUTOMATICALLY ROUNDED BY COMPUTER FOR INSPECTION (SEE MATH MODEL FOR PRECISE DIMENSIONS). FOR ALL OTHER DIMENSIONS NOT SHOWN BUT REQUIRED FOR TOOL BUILD, SEE MATH MODEL FOR PRECISE TOOL PATH DATA.
- WHEN PARTS ARE SHIPPED THEY MUST BE PACKED IN PLASTIC BAGS OR SHIPPING CONTAINERS MUST BE LINED WITH PLASTIC LINERS. BAGS OR LINERS MUST BE SEALED TO AVOID FOREIGN MATTER.
- SEALING CODE 1 - DESIGN WILL MEET REQUIREMENTS OF SAE/USCAR-6 UNSEALED CONNECTOR SYSTEM ENVIRONMENTAL TEST FLOWCHART
- THIS PART IS NOT CONTROLLED FOR AUTOMATIC FEEDING.
- FOR APPLICATION DATA SEE THE INDIVIDUAL APPLICATION DRAWINGS.

332B3028	04	AD	104	332B3021	33380638
332B3026	04	AD	103	332B3020	33380638
332B3025	04	AD	102	332B3019	33380638
332B3024	04	AD	101	332B3017	33380638
PART NO	REV	N/P	TYPE	CONN	CPA

DIMENSIONAL RANGE (MM)		TOLERANCE	
FROM	TO	±	±
0	25	0.13	0.13
25	50	0.13	0.13
50	75	0.13	0.13
75	100	0.13	0.13
100	125	0.13	0.13
125	150	0.13	0.13
150	175	0.13	0.13
175	200	0.13	0.13
200	225	0.13	0.13
225	250	0.13	0.13
250	275	0.13	0.13
275	300	0.13	0.13
300	325	0.13	0.13
325	350	0.13	0.13
350	375	0.13	0.13
375	400	0.13	0.13

DELPHI PACKARD ELECTRICAL/ELECTRONIC ARCHITECTURE

WARRREN, OH

COPYRIGHT ©2015 DELPHI CORPORATION AND/OR ITS AFFILIATES. ALL RIGHTS RESERVED.

THIS DRAWING IS THE PROPERTY OF DELPHI CORPORATION AND CONTAINS DELPHI CONFIDENTIAL INFORMATION. THE REPRODUCTION, DISTRIBUTION AND UTILIZATION OF THIS DOCUMENT OR ITS RELATED CAD DATA, AS WELL AS COMMUNICATION OF ANY CONTENT TO OTHERS, WITHOUT EXPRESS AUTHORIZATION, IS PROHIBITED.

DATE

OR

APV01 M. BASHKIN 18SE15

APV02 M. BASHKIN 18SE15

APV03 J. DAUGHERTY 18SE15

APV04

APV05

SUBSTANCES OF CONCERN AND RECYCLED CONTENT PER DELPHI (1044900)

MATERIAL SEE DRAWING

DRAWING NAME

TAXI ASM CONN 4 F CTS 050

DRAWING NUMBER

33283023

SIZE A0

SCALE 10:1

FRAME NO 1 OF 1

SHEET NO 1 OF 1

STG REV N/P

R 10 -

Mouser Electronics

Authorized Distributor

Click to View Pricing, Inventory, Delivery & Lifecycle Information:

[Aptiv:](#)

[33283026](#)