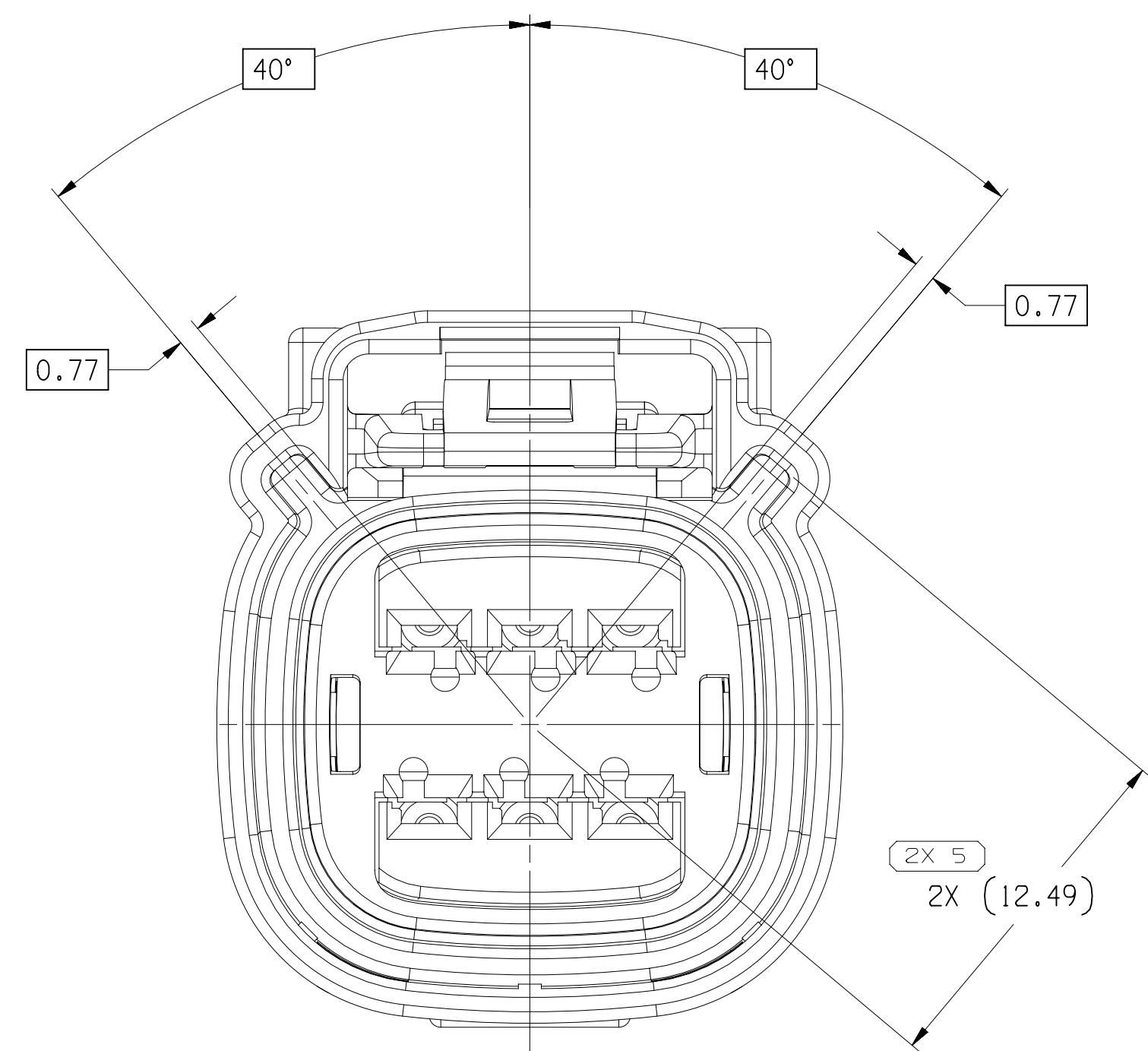
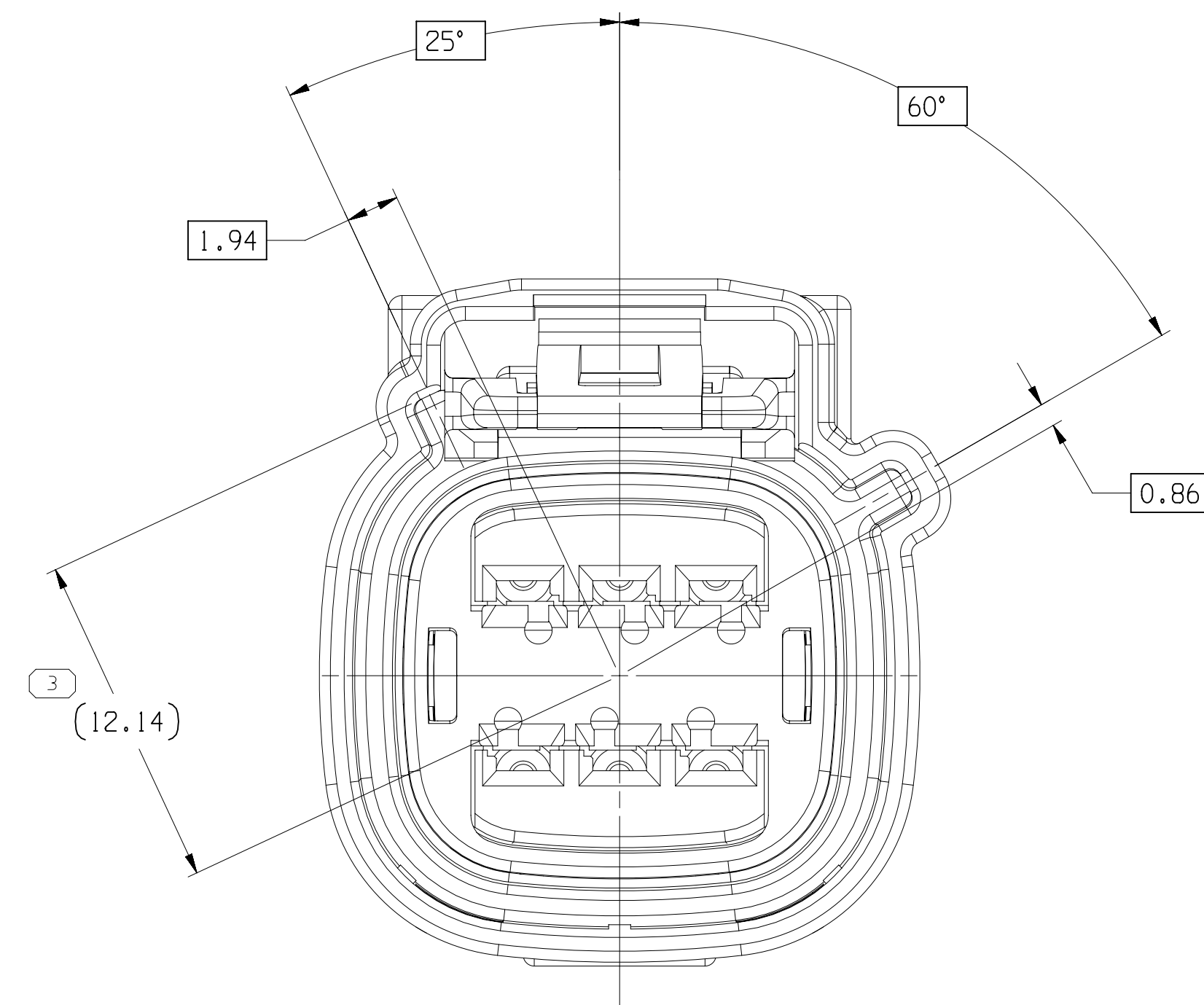
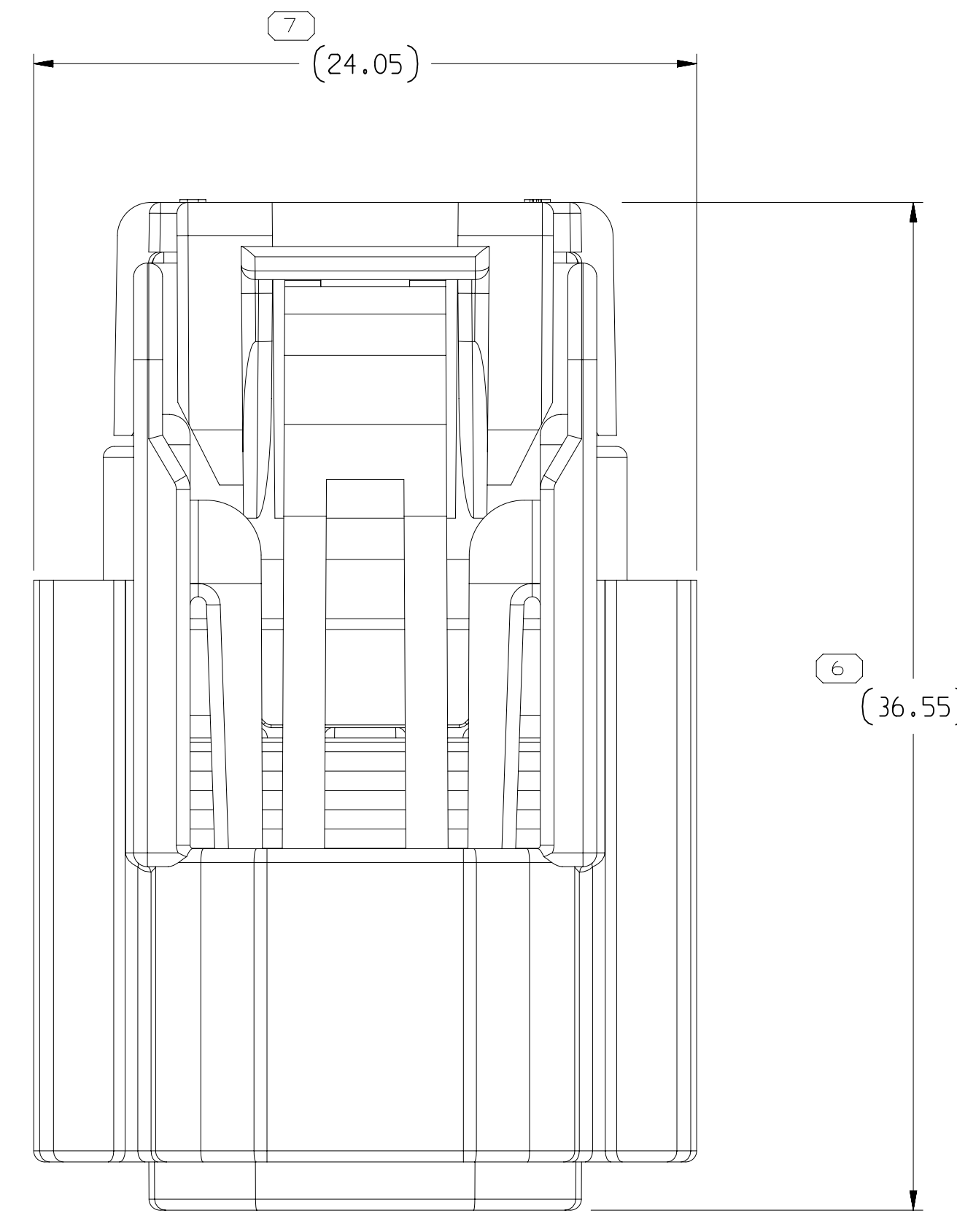


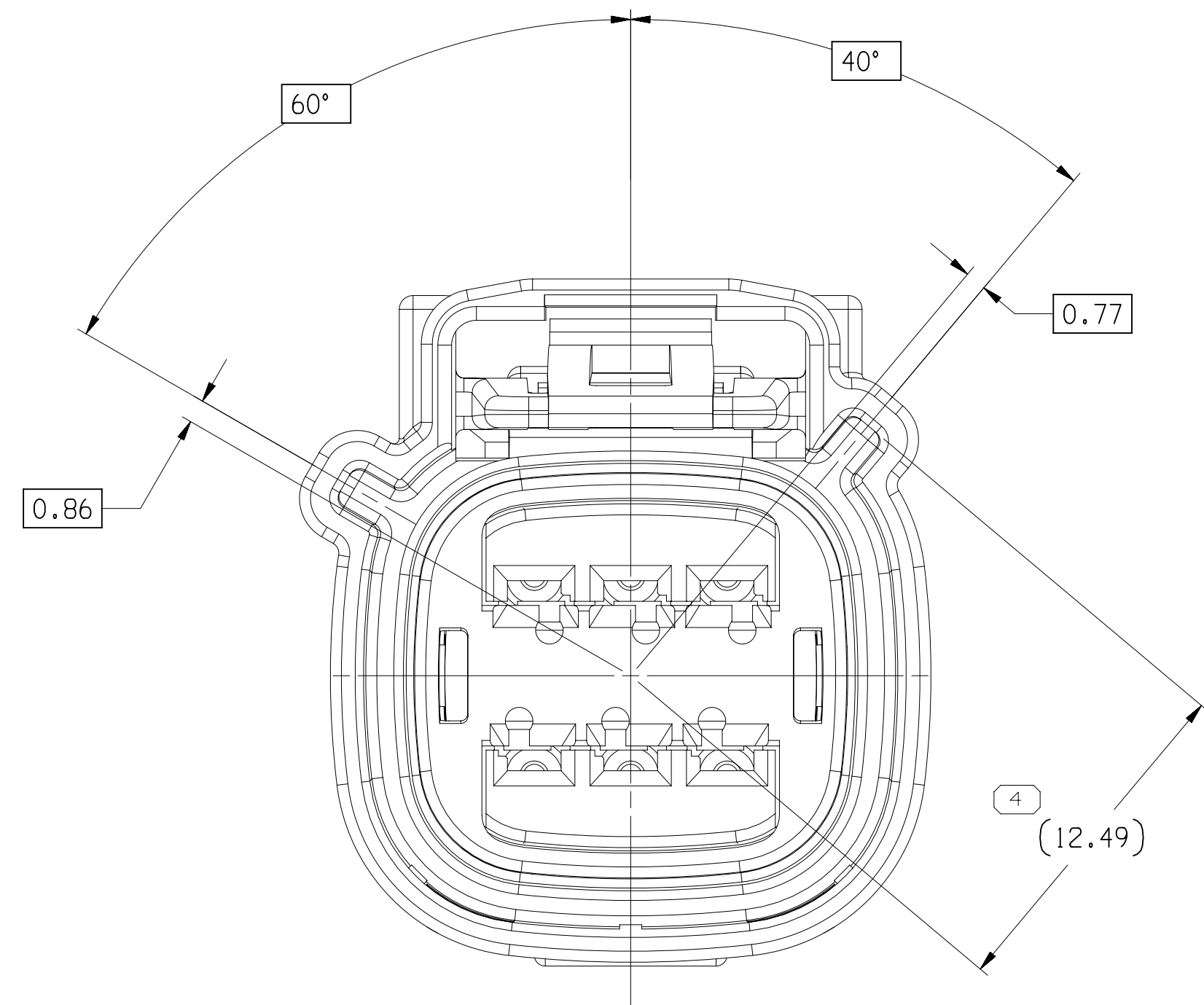
TYPE 102
SAME AS TYPE 101
EXCEPT AS SHOWN



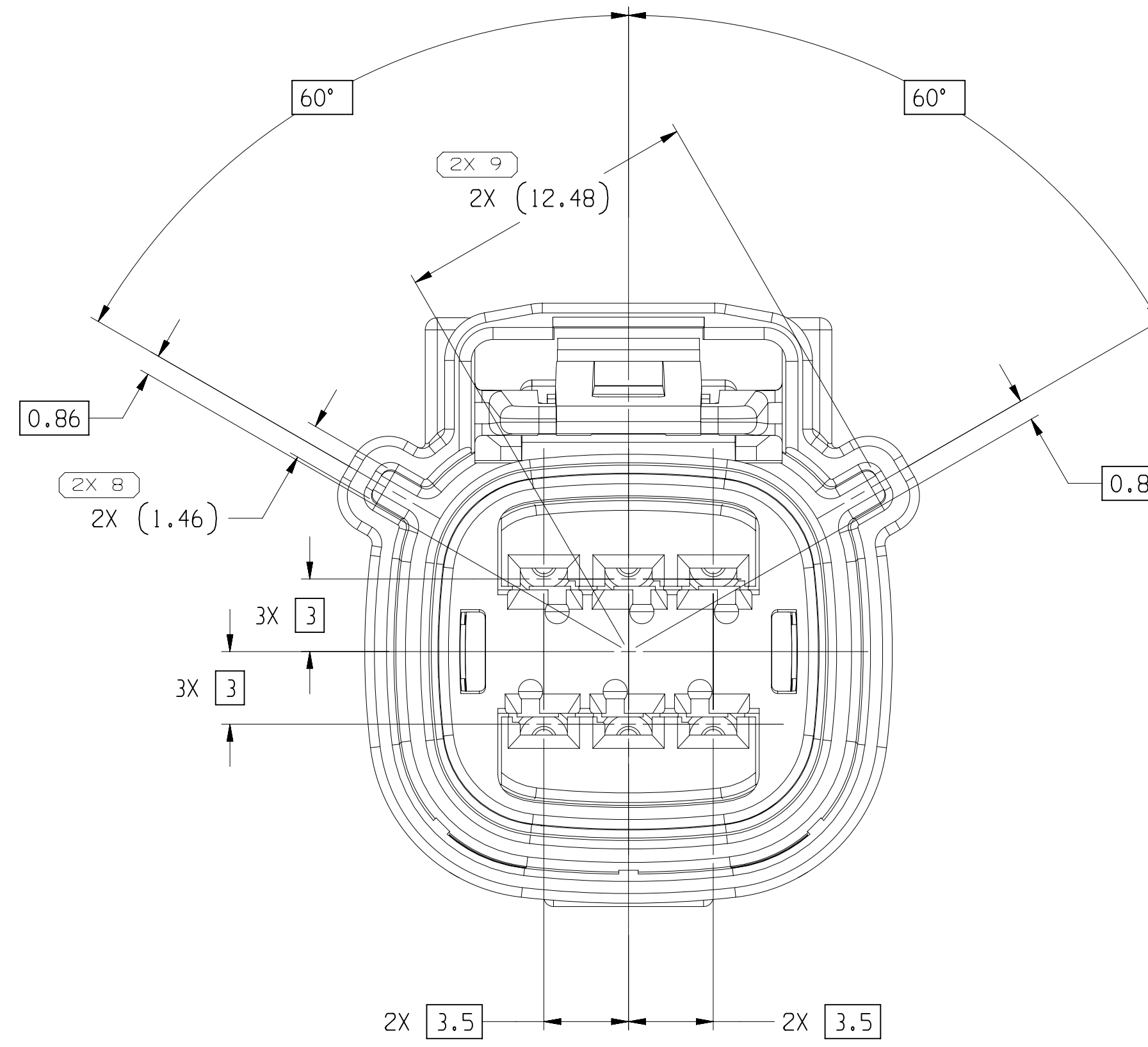
TYPE 105
SAME AS TYPE 101
EXCEPT AS SHOWN



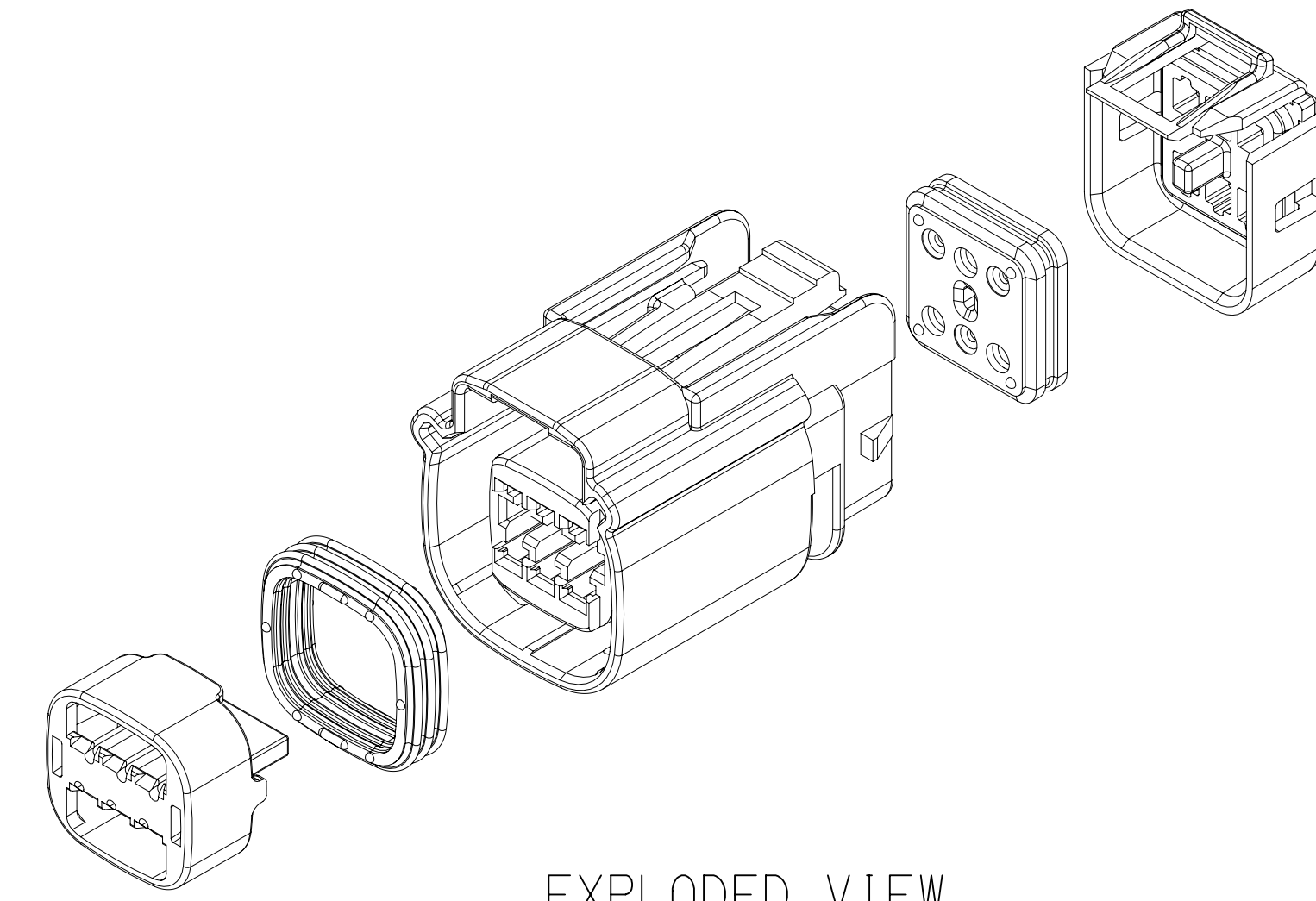
TYPE 103
SAME AS TYPE 101
EXCEPT AS SHOWN



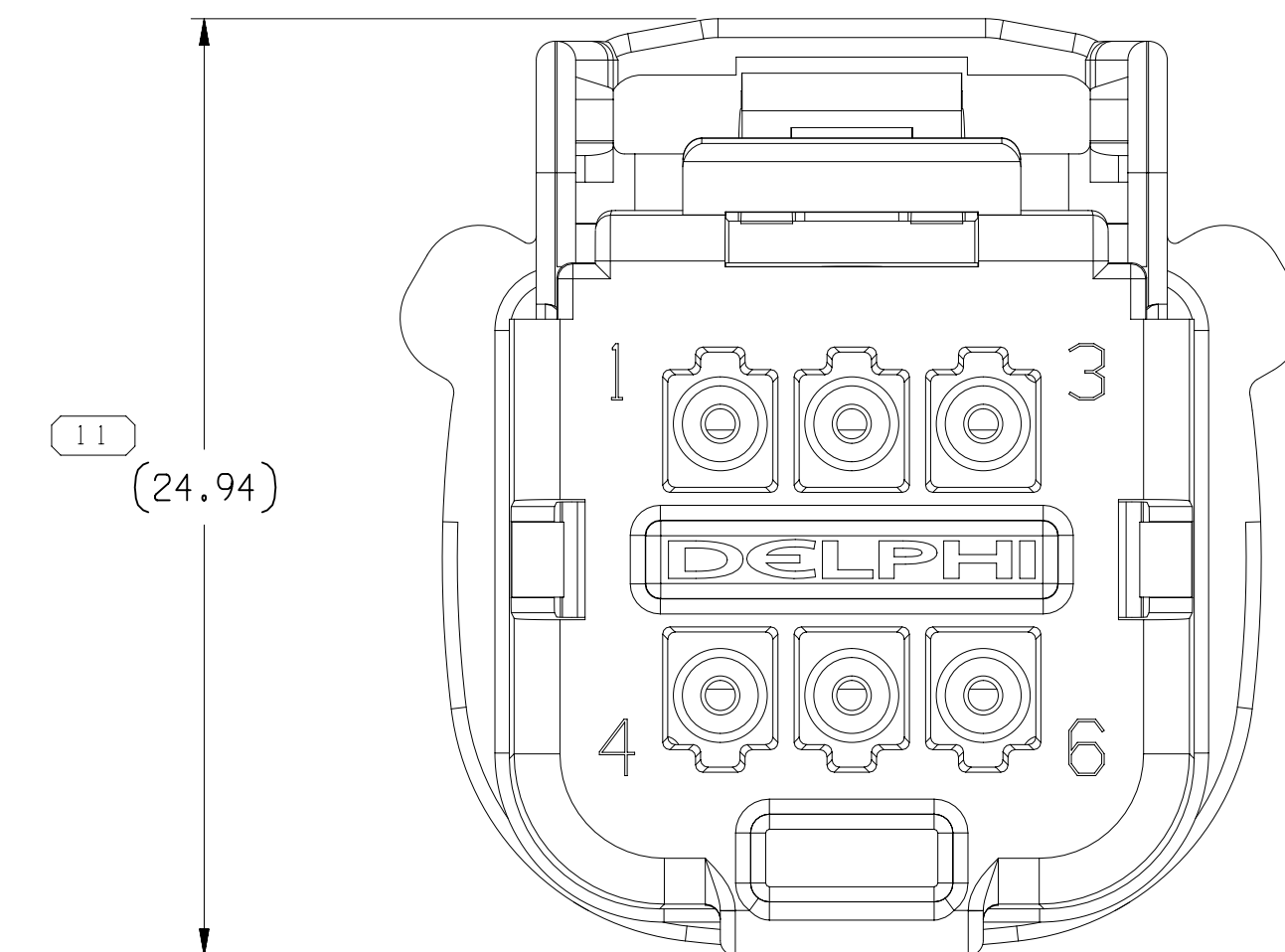
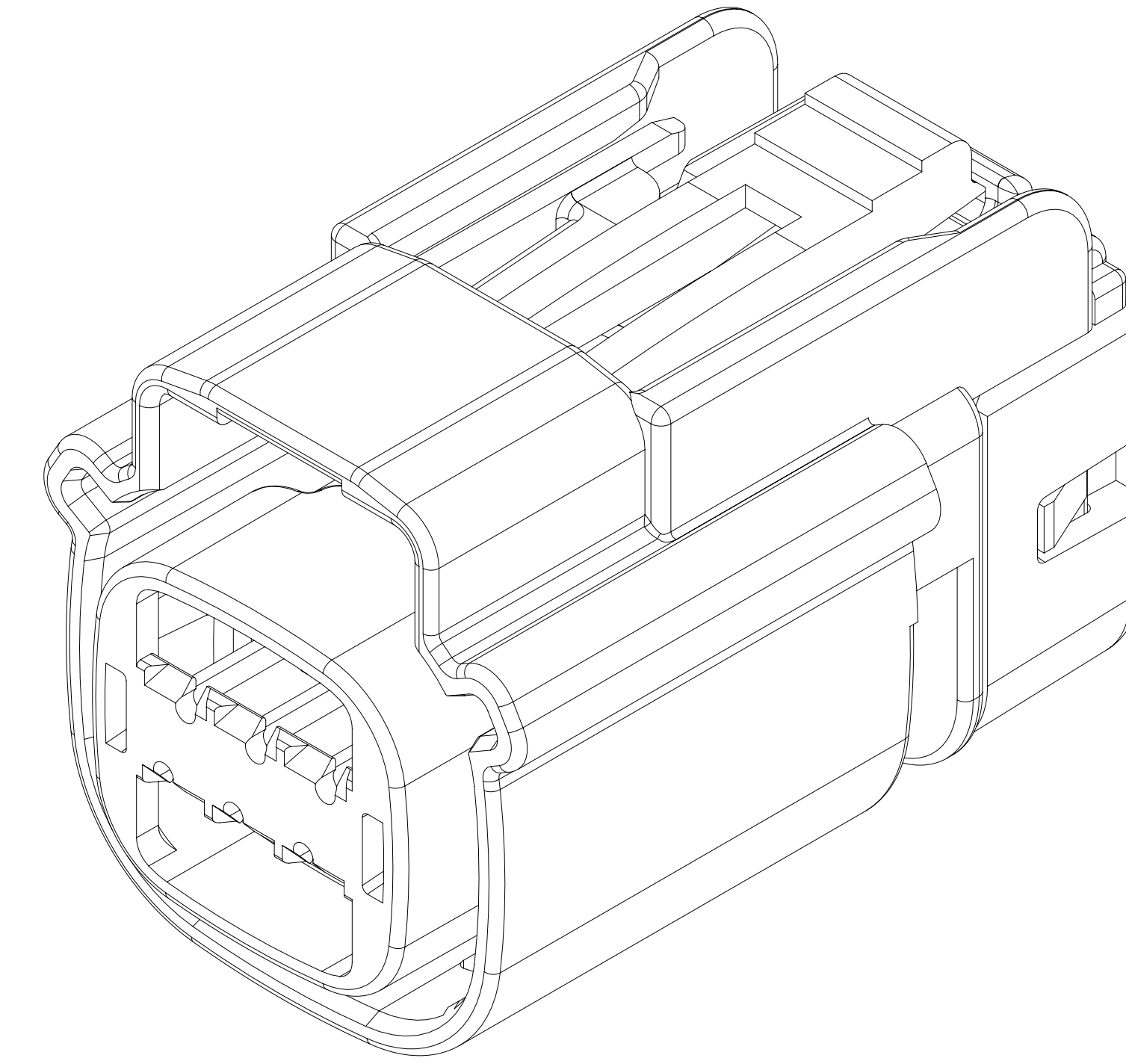
TYPE 106
SAME AS TYPE 101
EXCEPT AS SHOWN



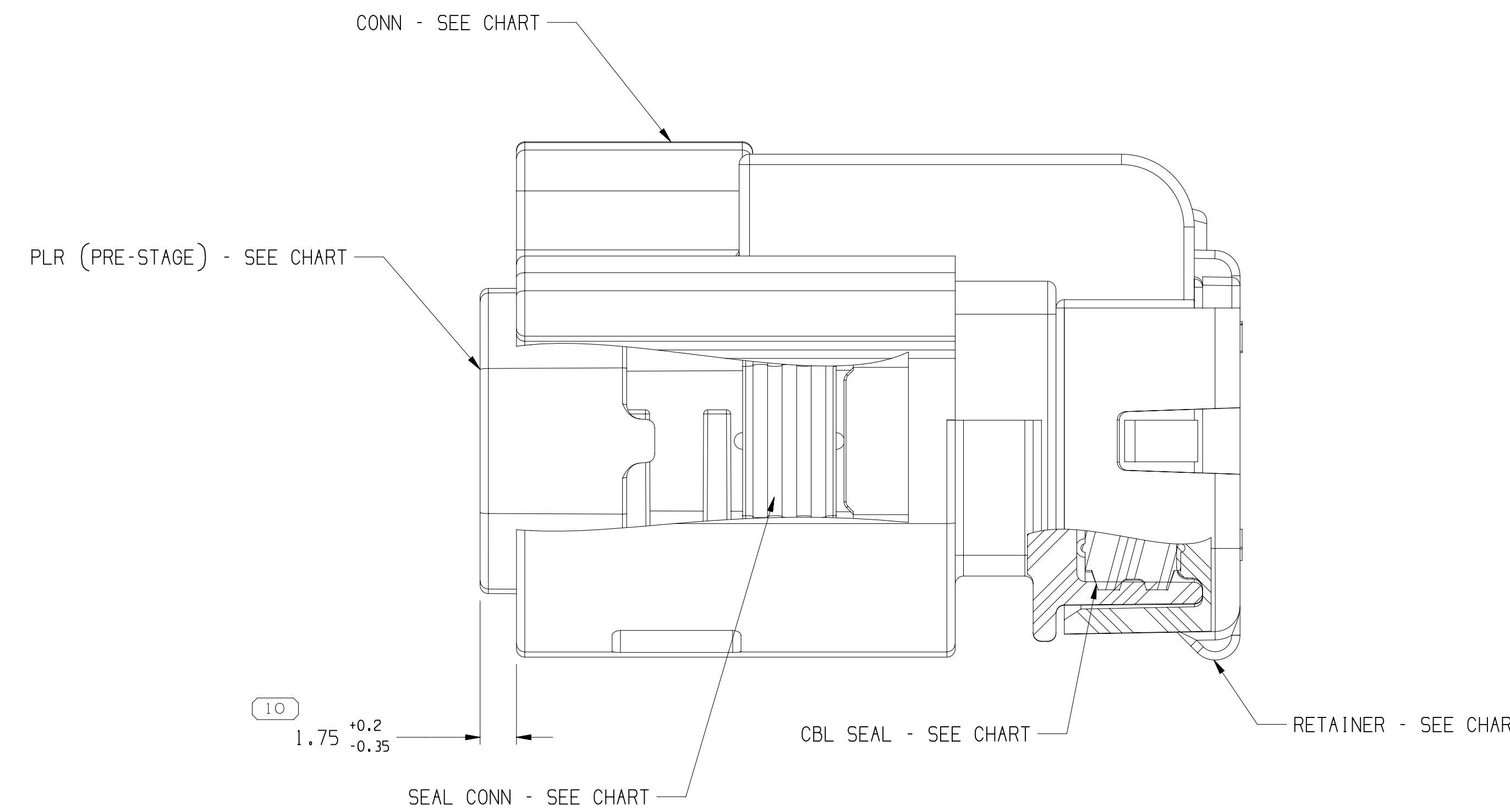
TYPE 101



EXPLODED VIEW
SCALE 2:1



11 (24.94)



NOTES

- UNLESS OTHERWISE SPECIFIED AND/OR INDICATED:
DIMENSIONS ARE TO FACE OF VIEW SHOWN AND AUTOMATICALLY ROUNDED BY COMPUTER FOR INSPECTION (SEE MATH MODEL FOR PRECISE DIMENSIONS). FOR ALL OTHER DIMENSIONS NOT SHOWN BUT REQUIRED FOR TOOL BUILD, SEE MATH MODEL FOR PRECISE TOOL PATH DATA.
DIMENSIONS ARE FOR REFERENCE ONLY.
- PART IS MANUFACTURED TO GEOMETRIC TOLERANCES, CENTERLINE DIMENSIONS ARE FOR REFERENCE ONLY.
- SEALING CODE 4 - DESIGN WILL MEET REQUIREMENTS OF SAE/USCAR-2 CONNECTOR SYSTEM ENVIRONMENTAL TEST FLOWCHART (PRESSURE/VACUUM AND SUBMERSION).
- THIS PRODUCT IS NOT CATEGORIZED AS AN APPEARANCE ITEM. MINOR IMPERFECTIONS INCLUDING, BUT NOT LIMITED TO, FLOW MARKS, COLOR BLEMISHES, GATE VESTIGE, AND SOFT FLASH THAT DO NOT AFFECT THE FIT, FORM, OR FUNCTION OF THE PART ARE PERMISSIBLE PER EAMP-4-3-CS-01-EN.
- FOR APPLICATION DATA SEE THE INDIVIDUAL APPLICATION DRAWINGS.
- ASSEMBLY TO BE USED WITH APPROPRIATE ACTIV HOLDER DESIGN.
- ASSEMBLY TO BE PROCESSED USING ACTIV CONNECTION SYSTEMS BEST PRACTICE METHODS AND/OR CONNECTOR ASSEMBLY INSTRUCTIONS AND APPLICABLE REPAIR PROCEDURES.
- BEFORE TERMINAL ASSEMBLY: VERIFY THAT PLR IS IN THE PRE-STAGE POSITION ON THE CONNECTOR. IF NOT: RETURN PLR TO PRE-STAGE POSITION.
- FOR DIFFERENT PUNCH PATTERN CONFIGURATIONS (IF AVAILABLE) SEE SHEET 2
- FOR ASSEMBLIES WITH CPA SEE DRAWING 15513510.

PART NO	REV	N/P	TYPE	CONNECTOR	PLR	SEAL CONN	SEAL CBL	RETAINER	USCAR OPTION
15532394	02	AE	106	15513502	15513516	15513518	15513515	15513512	F
15532393	02	AE	105	15513501	15513516	15513518	15513515	15513512	E
15532392	02	AE	104	15513500	15513516	15513518	15513515	15513512	D
15532391	02	AE	103	15513499	15513516	15513518	15513515	15513512	C
15532390	02	AE	102	15513498	15513516	15513518	15513515	15513512	B
15532389	02	AE	101	15513497	15513516	15513518	15513515	15513512	A

UNIFUNCTIONAL PART NUMBER	SCALE	FRAME NO	SHEET NO	TOTAL SHEETS	REV	N/P	TYPE	CONNECTOR	PLR	SEAL CONN	SEAL CBL	RETAINER	USCAR OPTION
15532382	5:1	2	OF 2	1	OF 1	R	08						

DATE	STG	REV	N/P	CHK	ZONE	REVISION HISTORY	AUTH	DR	APPROV	1	2
13MY13	R	01	-	-	-	ALL PARTS - RELEASED CONN. PLR, SEAL CONN. SEAL CBL & RETAINER TO LATEST REVISION: 15532389 - 2X (12.48) WAS 2X (12.64); 15532390 - 1 (12.14) WAS (12.31); 15532392 - 2X (12.14) WAS 2X (12.31); 15532393 - 2X (12.49) WAS 2X (12.66); 15532394 - (12.49) WAS (12.66)	432699	APB	JVM	AG	
28JN17	R	03	-	-	-	ALL PARTS - ADDED "ASSEMBLY" NOTES (3 PLCS) AND UPDATED "APPEARANCE" NOTE	437088	JVM	JVM	DXL	
12FE18	R	04	-	-	-	ALL PARTS - UPDATED RETAINER TO LATEST REVISION	438952	DAV	JVM	ACV	
04MY18	R	05	-	-	-	ALL PARTS - 1.75 +0.2/-0.35 WAS 1.75 & PSD WAS DIM # 101; 15532389 - UPDATED PART AVAILABILITY	439664	LVD	JVM	ACV	
05JL18	R	06	-	-	-	15532390 - UPDATED CONN TO LATEST REV; ALL PARTS - 3X [3] WAS 2X [3]	440305	COO	COO	ACV	
21AU18	R	07	-	-	-	35247624 - RELEASED	440668	GDH	JVM	VRG	
23MY19	R	08	-	-	-	35247624 - MOVED TO SHT 2; ALL PARTS - ADDED "PUNCH PATTERN CONF10" AND "ASSEMBLY WITH CPA" NOTES	443347	JOO	DSP	DSP	

CONNECTION SYSTEMS	
WARRIN, IN DATE	
COPYRIGHT 2013 ACTIV. ALL RIGHTS RESERVED.	
THIS DRAWING IS THE PROPERTY OF ACTIV AND CONTAINS ACTIV CONFIDENTIAL INFORMATION. THE REPRODUCTION, DISTRIBUTION AND UTILIZATION OF THIS DOCUMENT OR ITS RELATED CAD DATA, AS WELL AS COMMUNICATION BY ANY MEANS TO OTHERS, WITHOUT EXPRESS AUTHORIZATION, IS PROHIBITED.	
DR	DATE
APPROV: ALAIN PREVOST	13MY13
APPROV: JAVILLAMIL	13MY13
APPROV: ALICIA GUERRERO	13MY13
APPROV:	
SUBSTANCES OF CONCERN AND RECYCLED CONTENT: PUL (1049000)	
PROPERTY: SEE CHART	
DRAWING NAME: TAXI ASM CONN 6 F CCS 1.5 SLD	
DRAWING NUMBER: 15532382	
SIZE: A1x3	SCALE: 5:1
FRAME NO: 1	SHEET NO: 1
TOTAL SHEETS: 1	REV: 08

12235382

Mouser Electronics

Authorized Distributor

Click to View Pricing, Inventory, Delivery & Lifecycle Information:

[Aptiv:](#)
[15532389](#)