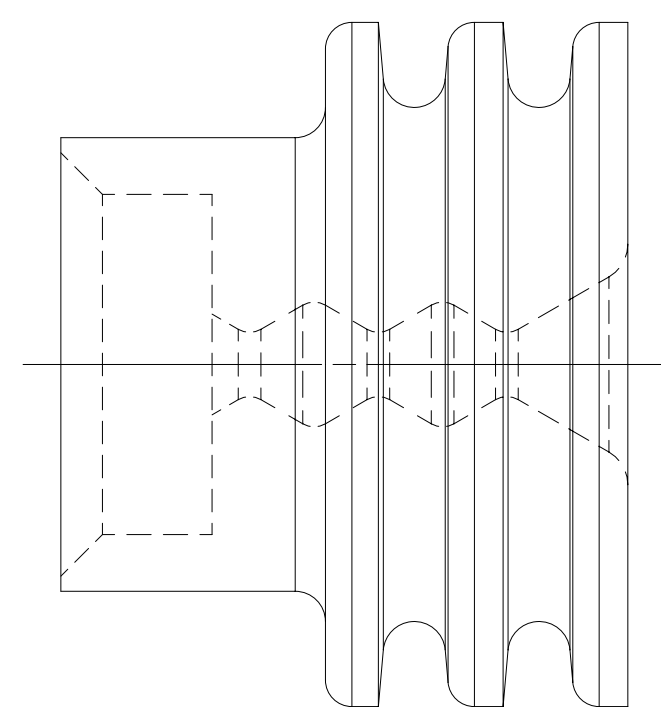


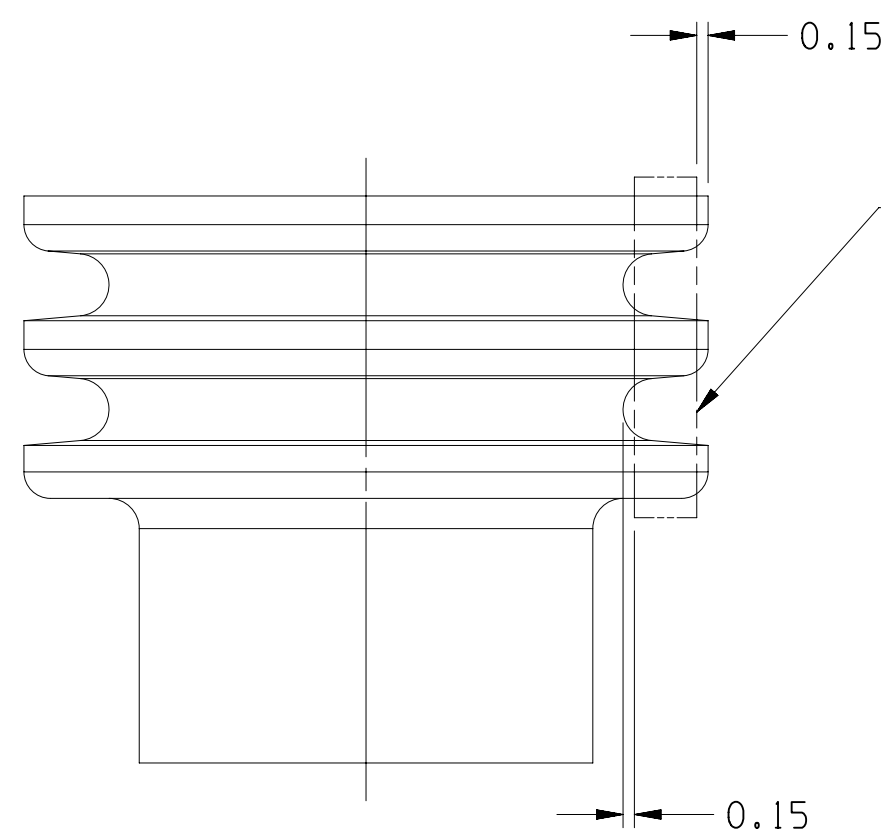
OPTIONAL CONSTRUCTION 1  
(ANTI-STICK RING)



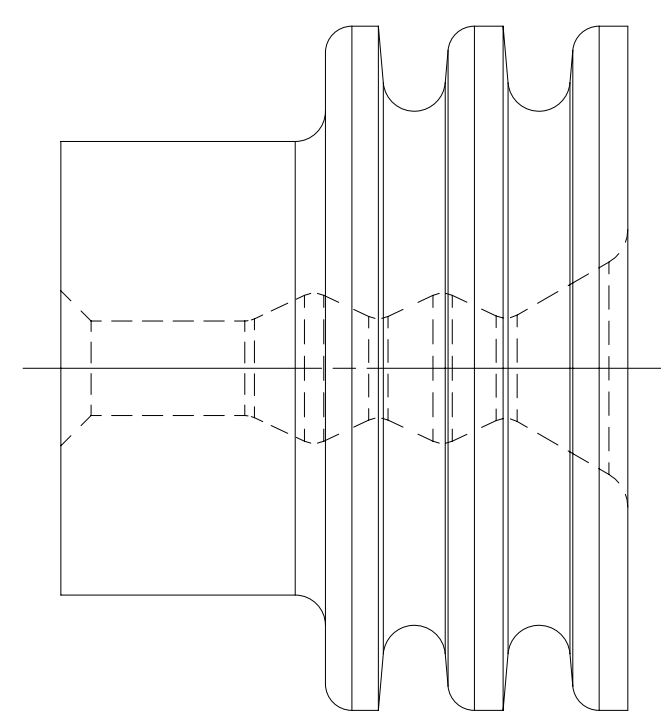
OPTIONAL CONSTRUCTION 2  
THIS IS THE PREFERRED CONSTRUCTION FOR NEW  
TOOL BUILDS  
(ANTI-STICK RING)



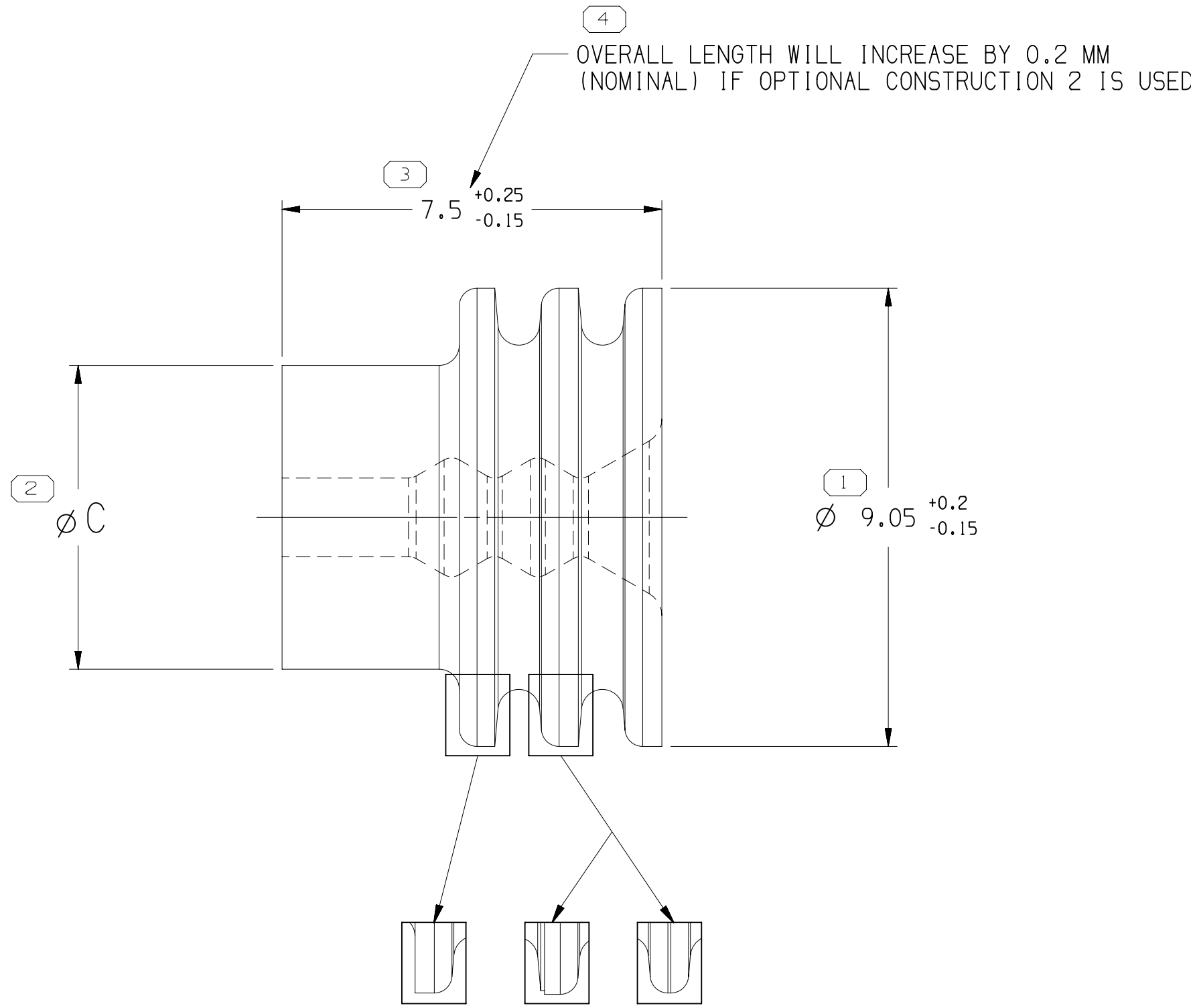
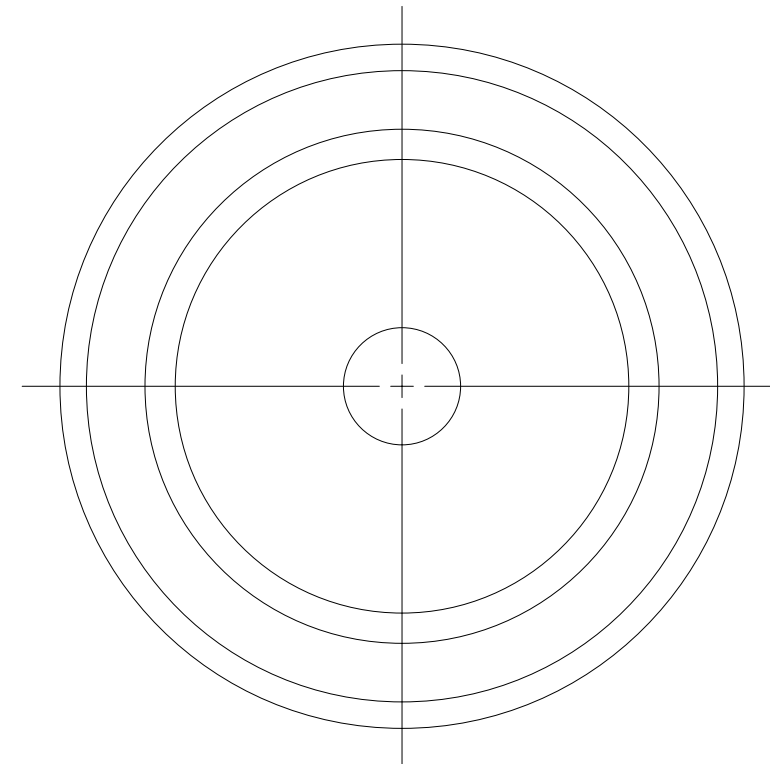
TYPE 202  
SAME AS TYPE 201  
EXCEPT AS SHOWN



SEALING RIBS MUST BE FREE OF  
SINKS, VOIDS, KNIT LINES AND  
FLASH IN THE AREA SHOWN  
ALL AROUND PART.  
SEE VPS A-121 FOR ADDITIONAL  
INFORMATION.



TYPE 203  
SAME AS TYPE 201  
EXCEPT AS SHOWN

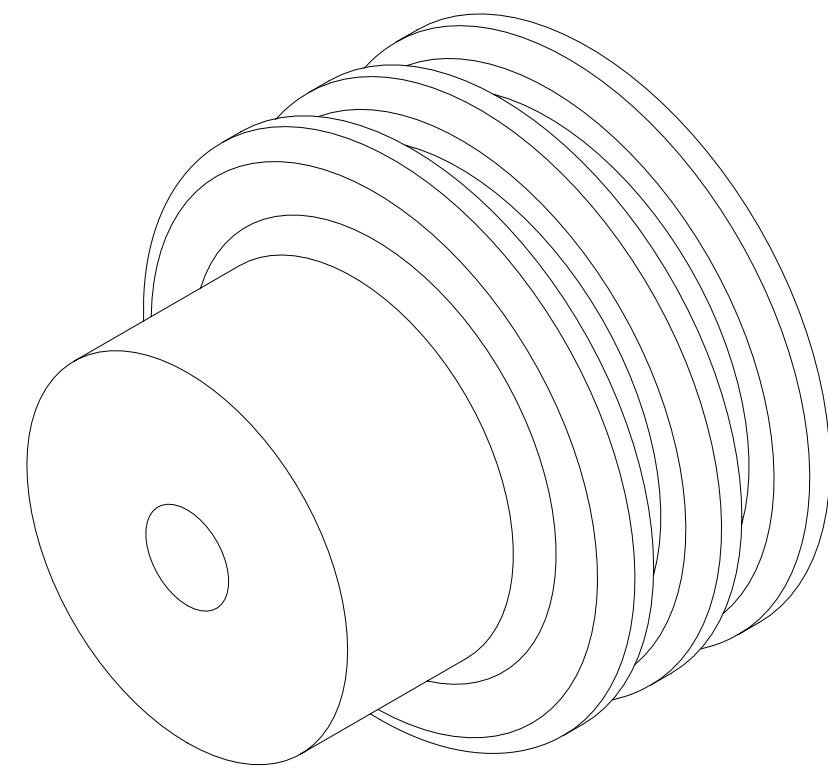


SEALING RIBS MAY DIFFER AS SHOWN

TYPE 201

PART NO	REV	N/P	MATERIAL SPECIFICATION AND COLOR	TYPE	CABLE O.D. ±0.05 SEE NOTE #4	CAVITY ID	EQUIVALENT CABLE SEAL	VOLUME	REPLACED BY
15324992	02	AA	SILICONE METHYL/VINYL RED-BROWN	203	1.7-1.29	6	8.5	-	0.299
15324991	01	AG	SILICONE METHYL/VINYL YELLOW	203	2.15-1.6	6	8.5	12052930	0.292
15324990	01	AG	SILICONE METHYL/VINYL PURPLE	201	4.5-3.61	6	8.5	12048443	0.235
15324989	01	AG	SILICONE METHYL/VINYL RED	201	3.76-2.81	6	8.5	12048442	0.264
15324988	01	AG	SILICONE METHYL/VINYL WHITE	201	2.85-2.01	6	8.5	12048441	0.287
15324987	01	AG	SILICONE METHYL/VINYL ORANGE	201	5.16-4.4	6.5	8.5	12034170	0.223
12162067	A9	-	SILICONE METHYL/VINYL PINK	203	1.7-1.29	6	8.5	-	0.299
*12110210	B4	-	SILICONE METHYL/VINYL GREEN	202	2.12-1.67	6.5	8.5	-	0.267
12034170	B7	-	SILICONE METHYL/VINYL ORANGE	201	5.16-4.4	6.5	8.5	15324987	0.223
12052930	05	AF	SILICONE METHYL/VINYL YELLOW	203	2.15-1.6	6	8.5	15324991	0.292
12048312	A3	-	SILICONE METHYL/VINYL BLUE	201	4.21-3.5	6.5	8.5	-	0.257
12048443	03	AE	SILICONE METHYL/VINYL PURPLE	201	4.5-3.61	6	8.5	15324990	0.235
12048442	03	AE	SILICONE METHYL/VINYL RED	201	3.76-2.81	6	8.5	15324989	0.264
12048441	03	AE	SILICONE METHYL/VINYL WHITE	201	2.85-2.01	6	8.5	15324988	0.287

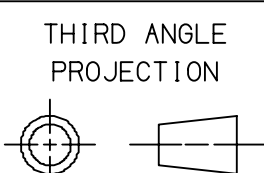
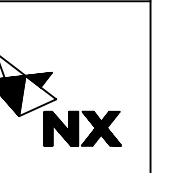
SYMBOL DEFINITION			MISSING SYMBOLS	
A DIMENSION WITHOUT AN INSPECTION REPORT SYMBOL DOES NOT REQUIRE INSPECTION. IT MAY BE CONTROLLED ON THE INDIVIDUAL COMPONENT DRAWING.	TOTAL NO OF INSPECTIONS REQUIRED	5	NO MISSING SYMBOL NUMBER	
	LAST NO. USED	5		



#### NOTES

- UNLESS OTHERWISE SPECIFIED AND/OR INDICATED:  
DIMENSIONS ARE TO FACE OF VIEW SHOWN AND  
AUTOMATICALLY ROUNDED BY COMPUTER FOR INSPECTION.  
(SEE MATH MODEL FOR PRECISE DIMENSIONS.) FOR ALL  
OTHER DIMENSIONS NOT SHOWN BUT REQUIRED FOR TOOL  
BUILD, SEE MATH MODEL FOR PRECISE TOOL PATH DATA.
- PARTS ARE TO BE PACKAGED IN SEALED PLASTIC BAGS. GROSS  
WEIGHT INCLUDING CARTON IS NOT TO EXCEED 34 POUNDS.
- DESIGNED AS A PUSH ON SEAL. SEAL SLIDES OVER INSULATION  
WINGS. A TERMINAL CANNOT BE CRIMPED OVER THIS SEAL.
- TO IMPROVE SEAL PROCESSING ON SLIPPERY OR SMOOTH CABLE  
INSULATION, THE APPLICATION ENGINEER MAY SPECIFY THE  
NEXT SMALLER SEAL SIZE P.N. IN PLACE OF THE INDICATED  
SEAL FOR THE "CABLE O.D." LISTED IN THE CHART.
- 12110210 CAN BE REPLACED BY ANY SEAL  
ON THIS PAGE IN CONJUNCTION WITH 12124471 OR 12124598  
TERMINAL DEPENDING ON CABLE OD.
- THIS PRODUCT IS NOT CATEGORIZED AS AN APPEARANCE ITEM. MINOR  
IMPERFECTIONS INCLUDING, BUT NOT LIMITED TO, FLOW MARKS, COLOR  
BLEMISHES, GATE VESTIGE, AND SOFT FLASH THAT DO NOT AFFECT THE  
FIT, FORM, OR FUNCTION OF THE PART ARE PERMISSIBLE PER EANP\_4-3-CS-01.EN.
- SEE 12010295 SHEET 6 FOR MYLAR ASSEMBLY INFORMATION.
- CORPORATE BRAND TO BE APPLIED TO PRODUCT DESIGN PER  
THE LATEST REVISION OF ESD S1085201.

DWG STATUS				REVISION HISTORY		AUTH		DR		APVD	
DATE	STG	REV	N/P	CHG	ZONE						
30NOV99	R	001	-	-		ALL PARTS - REDRAWN TO PD: 15324987-92	990005	JLZ	GMC	RH	
07NOV00	R	002	-	-		15324987-92 - REVISED	202978	JLZ	EAR	JR	
15MR04	R	03	-	-		12052930, 12048441, 12048442 & 12048443 PER NIN EWD BBLTS: ALL PARTS - UPDATED MATERIAL SPECS	251701	RH	RH	MR	
17NOV04	-	04	-	-	-	12048441 THRU 12048443 & 12052930 - REVISED DRAWING CHART	261371	JS	JS	MR	
01FEO5	R	05	-	-		REVISED TOLERANCE	263812	MM	MM	MR	
09MR06	R	06	-	-		15324987-92 - UPDATED POM ATTRIBUTES	276506	JBD	AUG	JES	
26MY06	R	07	-	-		REMOVED TYPES 204, 205 & 206 AND OPTIONAL CONSTRUCTION VIEWS: ALL ACTIVE PARTS - 7.5 +0.25/-0.15 WAS 7.5 ±0.15, 9.05 +0.2/-0.15 WAS 9.05 ±0.15; 12048433, 12052452-53, 12052931, 12065703, 12162068, 12048441-43, 12052930, 12034170 & 12162067 - RESTRICTED; 15324987-90 & 15324991-92 - WERE TYPE 204 & 206, UPDATED MAT'L SPEC AND ADDED ALTERNATE MAT'L SPEC	281070	JPH	JVM	MPR	
17AUG06	R	08	-	-		15324992 - OBSOLETE	283517	CCV	AUG	MR	
03OCT06	R	09	-	-		ALL ACTIVE PARTS - ADDED SEALING RIBS LABEL, OVERALL LENGTH LABEL, SEALING RIBS VIEWS & NOTE, ANTI-STICK RING OPTIONAL CONSTRUCTION VIEWS AND DIMS (2 PLCS): 12162067-68 - WERE RESTRICTED	285210	JBD	FRG	MPR	
24JUL09	R	10	-	-		ALL PARTS - ADDED VOLUME COLUMN AND UPDATED MATERIAL CALLOUTS	408462	ECB	AUG	MPR	
15JUN10	R	11	-	-		12048433, 12052452-53, 12052931, 12065703, 12124843 & 12162068 - MOVED TO SHT 6; 12048441-43 & 12052930 - OBSOLETE AND ADDED "REPLACED BY" COLUMN ON CHART	411067	AGM	JAA	MPR	
20SEP18	R	12	-	-		15324992 - REINSTATED ADDING ANTI-STICK RING AND UPDATED MAT'L CALLOUT	441097	LVD	JAA	VRG	
08AUG19	R	13	-	-		12162067 - OBSOLETE AND ADDED "REPLACED BY" INFO	444186	DAV	EVV	CFH	
05OCT21	R	14	-	-		ALL ACTIVE PARTS - REVISED "TO IMPROVE SEAL" NOTE	555461	GDH	JAA	ACR	

LINE DRAWING THROUGH A PART NUMBER INDICATES THAT PHYSICAL PARTS ARE NOT AVAILABLE FOR ORDERING.			
PART NUMBERS THAT DO NOT HAVE A LINE PRESENT INDICATE THAT PHYSICAL PARTS ARE AVAILABLE FOR ORDERING.			
CONTACT APPLIC SLES TO ASSURE AVAILABILITY OF PARTS.			
ONE TIME		PART DRAWING	
TITLE			
VOLUME (CMPI)	DISTR CODE		
SEE CHART			
UNLESS OTHERWISE SPECIFIED			
THIS DOCUMENT IS IN ACCORDANCE WITH ASME Y14.5M-1994 AS WELL AS THE ISO 8015 DRAWING CONVENTIONS TERMINATING ADDENDUM 2001. SEPARATE PATTERNS OF FEATURES MAY BE GAGED SEPARATELY REGARDLESS OF DATUM REFERENCES.			
ALL DIMENSIONS ARE IN MILLIMETERS			
REFERENCE			
THIRD ANGLE PROJECTION	DO NOT SCALE		
USE MATH DATA			
</			

# Mouser Electronics

Authorized Distributor

Click to View Pricing, Inventory, Delivery & Lifecycle Information:

[Aptiv:](#)

[15324990](#)