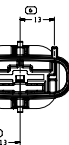
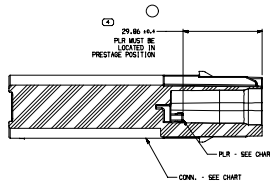
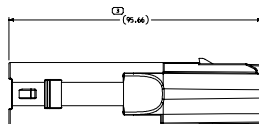




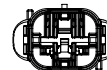
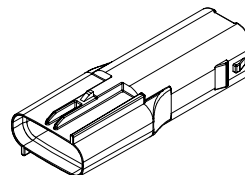
TYPE 102
SAME AS TYPE 101
EXCEPT AS SHOWN




TYPE 101



SECTION A - A



OPTIONAL DIRECTION FOR CPA INSERTION OF OR 18

SYMBOL DEFINITION		
 A DIMENSION WITHOUT AN INSPECTION REPORT SYMBOL DOES NOT REQUIRE INSPECTION. IT MAY BE CONTROLLED ON THE INDIVIDUAL COMPONENT DRAWING.	TOTAL NO OF INSPECTIONS REQUIRED	8
	LAST NO. USED	8

S	DATE	TIME	DEV	TYPE	CHK	ZONE	REVISION HISTORY	AUTH	BY	APPV
21	ANU 8	01	-	-	-	-	5192003 - BAA RE37735, REVISED AND RELEASED PART DRAWING 5192024 - BAA RE37735, REVISED AND RELEASED PART DRAWING	646173	DG	SDS
100C19	R 02	-	-	-	-	-	All parts - UPDATED PER DCM TO LATEST REVISION, ADDED "ADDITIONAL CHECK AND COMPONENTS" NOTE, RELOCATED DIM #4 (25.0 IN. 4.0) AND PCD	645204	JL	AAJ
25H020	R 02	AA	-	-	-	-	REVISED NO PART AVAILABLE.	645990	TS	TS
10B020	R 02	AB	-	-	-	-	ADDED OPTIONAL DIRECTION FOR CPA AND DELETED REFERENCE MARK #1 WITH DIM#4 NO DIMENSION, A.P.A. & DIM#4	646185	TS	BA

- ## NOTES

1. UNLESS OTHERWISE SPECIFIED AND/OR INDICATED

DIMENSIONS ARE TO FACE OF VIEW SHOWN AND AUTOMATICALLY ROUNDED BY COMPUTER FOR INSPECTION (SEE MATH MODEL FOR PRECISE DIMENSIONS). FOR ALL OTHER DIMENSIONS NOT SHOWN BUT REQUIRED FOR TOOL BUILD, SEE MATH MODEL FOR PRECISE TOOL PATH DATA.

2. THIS PRODUCT IS NOT CATEGORIZED AS AN APPEARANCE ITEM. MINOR IMPERFECTIONS INCLUDING, BUT NOT LIMITED TO, FLOW MARKS, COLOR BLEMISHES, GATE VESTIGES, AND SOFT FLUSH THAT DO NOT AFFECT THE FIT, FORM, OR FUNCTION OF THE PART ARE PERMISSIBLE PER EIAF-4-3.CS.D1.D
3. THIS PART IS NOT CONTROLLED FOR AUTOMATIC FEEDING.
4. FOR APPLICATION DATA SEE THE INDIVIDUAL APPLICATION DRAWINGS.
5. FOR ASSEMBLY MANUAL REFER TO P/N 35243957
6. FOR ADDITIONAL CABLE AND COMPONENTS INFORMATION SEE SHT 2

35191204	Q2	-	102	35191206	35191209
35191203	Q2	-	101	35191205	35191209
PART NO	REV	N/P	TYPE	CONN	PLR

1. DRAWING AND PART NUMBER ARE NOT AVAILABLE FOR QUOTATION. PART NUMBER TWO TO SIX AND A-1 ARE AVAILABLE FOR QUOTATION. DRAWING NUMBER ARE AVAILABLE FOR QUOTATION. QUOTATION OFFER SHALL BE MADE IMMEDIATELY OF DATE.	
Q&A TOOL PART DRAWING	
STYLE	VALUE (10%)
DATE	DATE
UNLESS OTHERWISE SPECIFIED THIS DRAWING IS IN ACCORDANCE WITH ASME Y14.5-2003 AND Y14.5-2003-2009. ALL DIMENSIONS SHOWN ON THIS DRAWING ARE IN INCHES UNLESS OTHERWISE SPECIFIED.	

•APTIV•

CONNECTION SYSTEMS

Meeting, Dining,
CONVENTION SESS. OFFICE, ALL ROOMS REQUIRED.

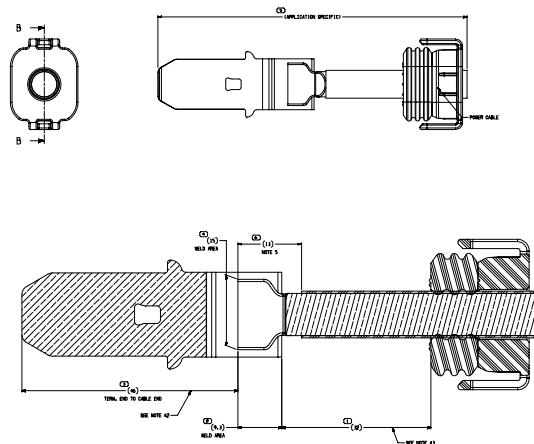
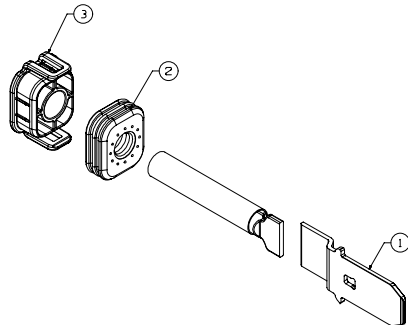
THIS ROOM IS THE PROPERTY OF THE CITY AND COUNCIL OFFICE
AND IS NOT TO BE USED FOR ANY OTHER PURPOSES. THE
UTILIZATION OF THIS ROOM IS AT THE REQUESTER'S RISK, AS
IT IS CONSIDERED TO BE SUBJECT TO OTHER, FUTURE
APPROPRIATION, IN PROGRESS.

ON	DATE
MR. S. SUBRAMANIAN	21.11.19
MRS. S. SUBRAMANIAN	21.11.19
MR. DARTEN AGUILAR	21.11.19
MR. S.	
MR. S.	

SUBSTANCES OF CONCERN AND RECOMMENDATIONS
CONTAINED HEREIN ARE FOR INFORMATION ONLY.

REMARKS:
SEE COMPONENT DRAWINGS

<div style="border: 1px solid black; padding: 2px; display: inline-block;">4</div> PROCESS SELECTIVE SIMONSON		ALL SIMONSON ARE IN ALL-ITEMS REFERENCE																					
SIMONSONS EXCLUDED TO () INDICATE REFERENCE SIMONSONS AND NO TOLERANCE LENGTH ARE EXCLUDED		THIRD-ABLE PROJECTION																					
<table border="1"> <thead> <tr> <th>THIRD-ABLE</th> <th>SCALE</th> <th>USE</th> <th>DO NOT SCALE</th> </tr> </thead> <tbody> <tr> <td>FROM</td> <td>TO</td> <td>TO</td> <td>TO</td> </tr> <tr> <td>10</td> <td>20</td> <td>30</td> <td>40</td> </tr> <tr> <td>50</td> <td>60</td> <td>70</td> <td>80</td> </tr> <tr> <td>90</td> <td>100</td> <td>110</td> <td>120</td> </tr> </tbody> </table>		THIRD-ABLE	SCALE	USE	DO NOT SCALE	FROM	TO	TO	TO	10	20	30	40	50	60	70	80	90	100	110	120	DO NOT SCALE USE MATH	
THIRD-ABLE	SCALE	USE	DO NOT SCALE																				
FROM	TO	TO	TO																				
10	20	30	40																				
50	60	70	80																				
90	100	110	120																				



SECTION B-B SCALE 5:1

ITEM #	DESCRIPTION	PART NUMBER	QTY	MSPEC	QTY	MSPEC	PART NUMBER	QTY	MSPEC	PART NUMBER	QTY	MSPEC	PART NUMBER	QTY	MSPEC
3	SEAL RETAINER	35191215	1		35191214	1	35191213	1	35191214	1	35191214	1	35191214	1	
2	CABLE SEAL	35191212	1	W7401MAX	35191211	1	W7401MAX	1	W7401LAX	35191211	1	W7401LAX	1	W7401LAX	1
1	M TERM	35228535	1		35228535	1	35228535	1	35228535	1	35228535	1	35228535	1	
SET IDENTIFIER		MISC COMPONENT FOR 35mm		MISC COMPONENT FOR 35mm		MISC COMPONENT FOR 16mm		MISC COMPONENT FOR 25mm		MISC COMPONENT FOR 35mm					
CABLE DIAMETER		9.4-10.4		7.9-8.7		6.4-7.2		7.9-8.7		8-8.4					
SUB-DESCRIPTION & TYPE		XPLO M7401 (TYPE 103)		XPLO M7401 (TYPE 102)		XPLO M7401 (TYPE 101)		XPLO M7401 (TYPE 101)		THIS RACKER (SEE DRAWING W/PHI 1400) (TYPE 101)					

35228535
APR 10 2010 10:10:10 AM

GENERAL INFORMATION		TOTAL NO. OF INSPECTIONS REQUIRED	
NAME OF INSPECTOR	DATE	NO. OF INSPECTIONS	DATE
NAME OF INSPECTOR	DATE	NO. OF INSPECTIONS	DATE

GENERAL INFORMATION		TOTAL NO. OF INSPECTIONS REQUIRED	
NAME OF INSPECTOR	DATE	NO. OF INSPECTIONS	DATE
NAME OF INSPECTOR	DATE	NO. OF INSPECTIONS	DATE

ADDITIONAL ASSEMBLY INFORMATION

REFER TO REVISIONS, SUPPLEMENTARY DRAWINGS FOR RECOMMENDED CABLE BOND INSTRUCTIONS.

NOTES

1. CABLE ASSEMBLY MUST BE VALIDATED TO CUSTOMER REQUIREMENTS FOR APPLICATION.
2. WIRE CABLE MUST NOT BE FURTHER THAN THE AREA DESIGNATED FOR WELD PURPOSES.
3. DIM IS FOR REFERENCE TO INSURE TERMINAL DIMENSIONS TO THE PRIMARY LOCK BEFORE CABLE SEAL AND STRAIN RELIEF ARE INSTALLED.
4. FOR APPLICATION DATA SEE THE INDIVIDUAL APPLICATION DRAWINGS.
5. DIM IS FOR REFERENCE. INSURE SUPPLIER SHALL EXTEND THE DIMENSION WITH BEARING SURFACE. IT SHOULD NOT LEAD TO LOOSE AND SLACKY DIMS.

APPROVED FOR ASSEMBLY

DATE: 10/10/2010

BY: [Signature]

APPROVED FOR ASSEMBLY

DATE: 10/10/2010

BY: [Signature]

32SS8232

Mouser Electronics

Authorized Distributor

Click to View Pricing, Inventory, Delivery & Lifecycle Information:

[Aptiv:](#)
[35191203](#)