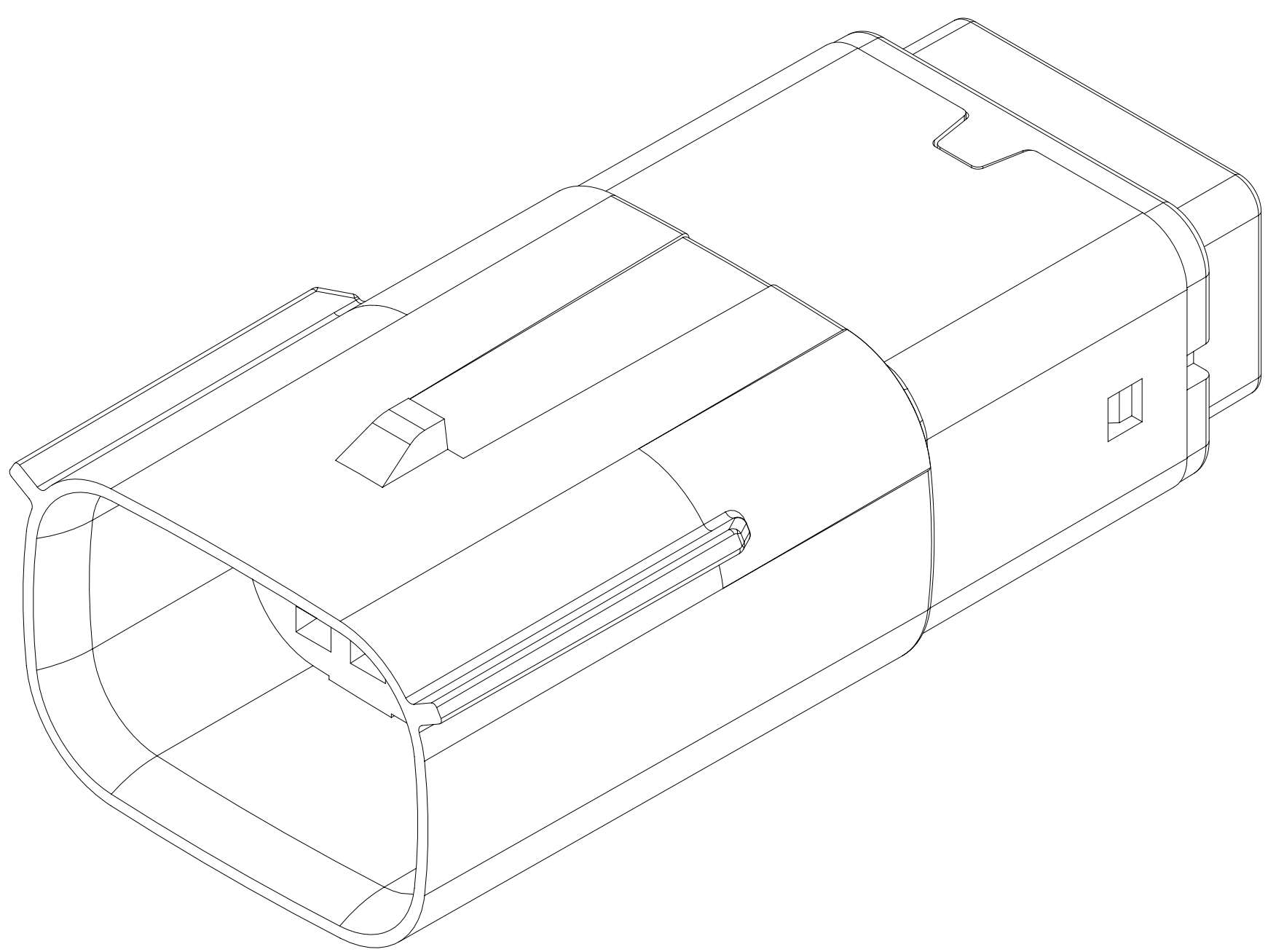
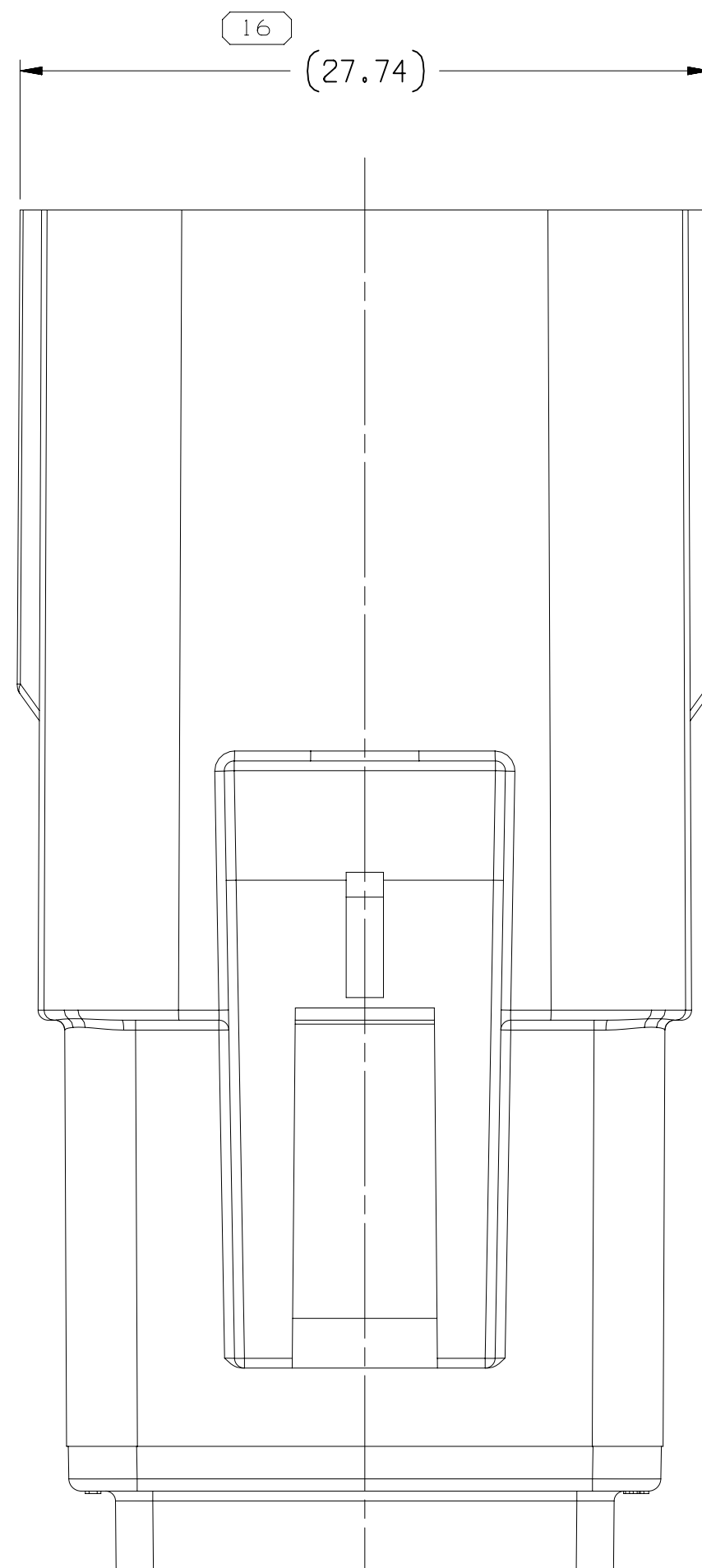
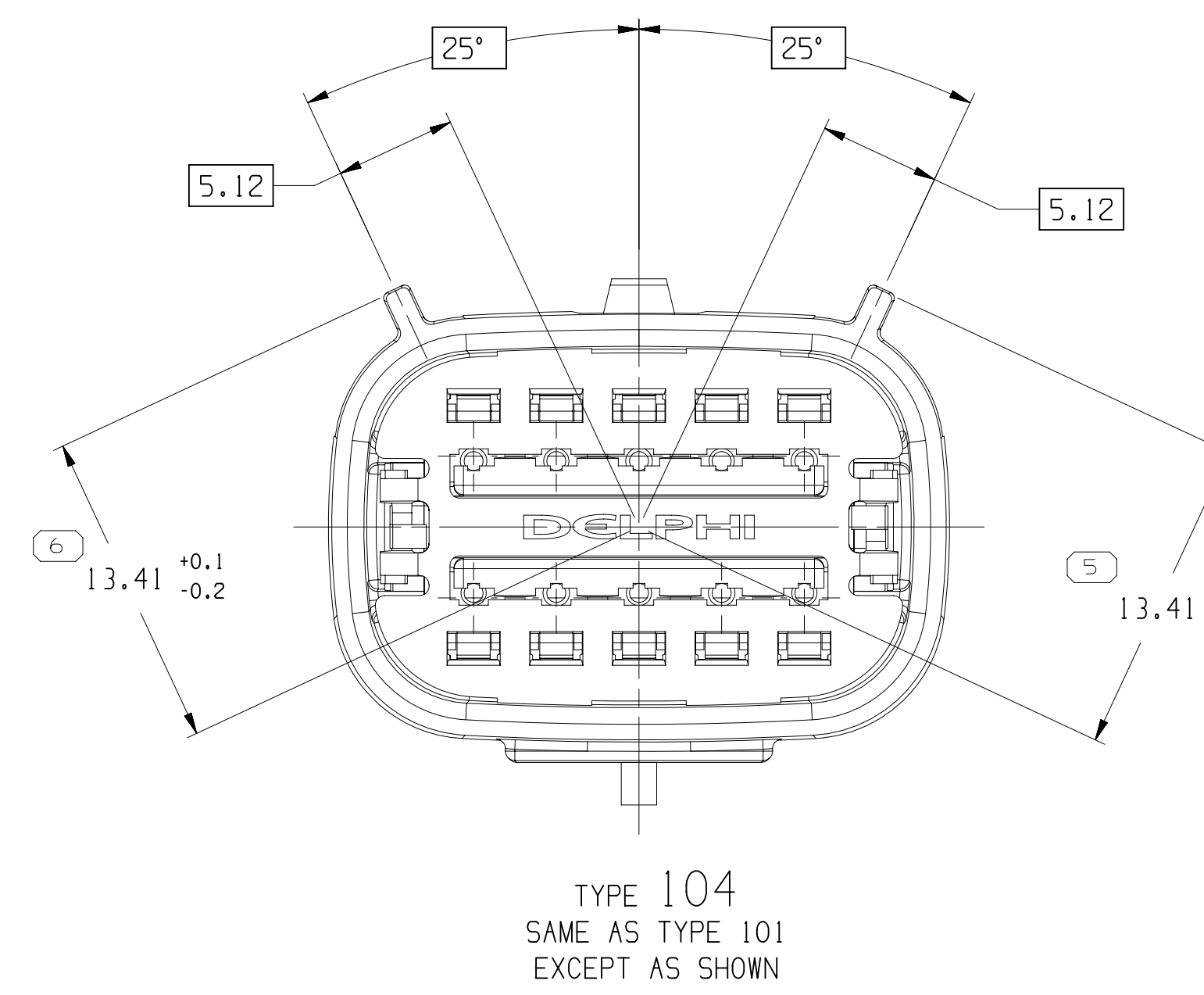
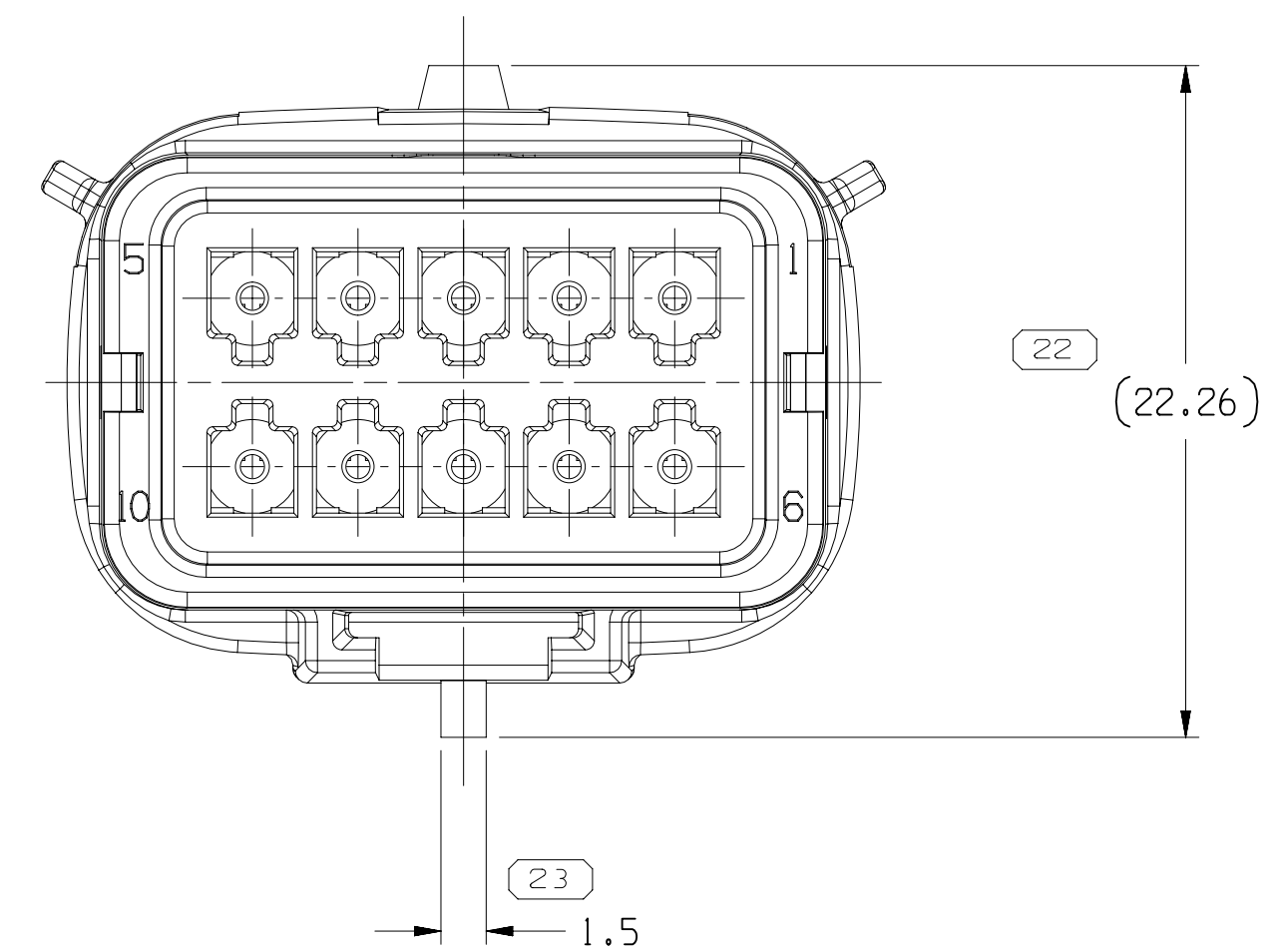
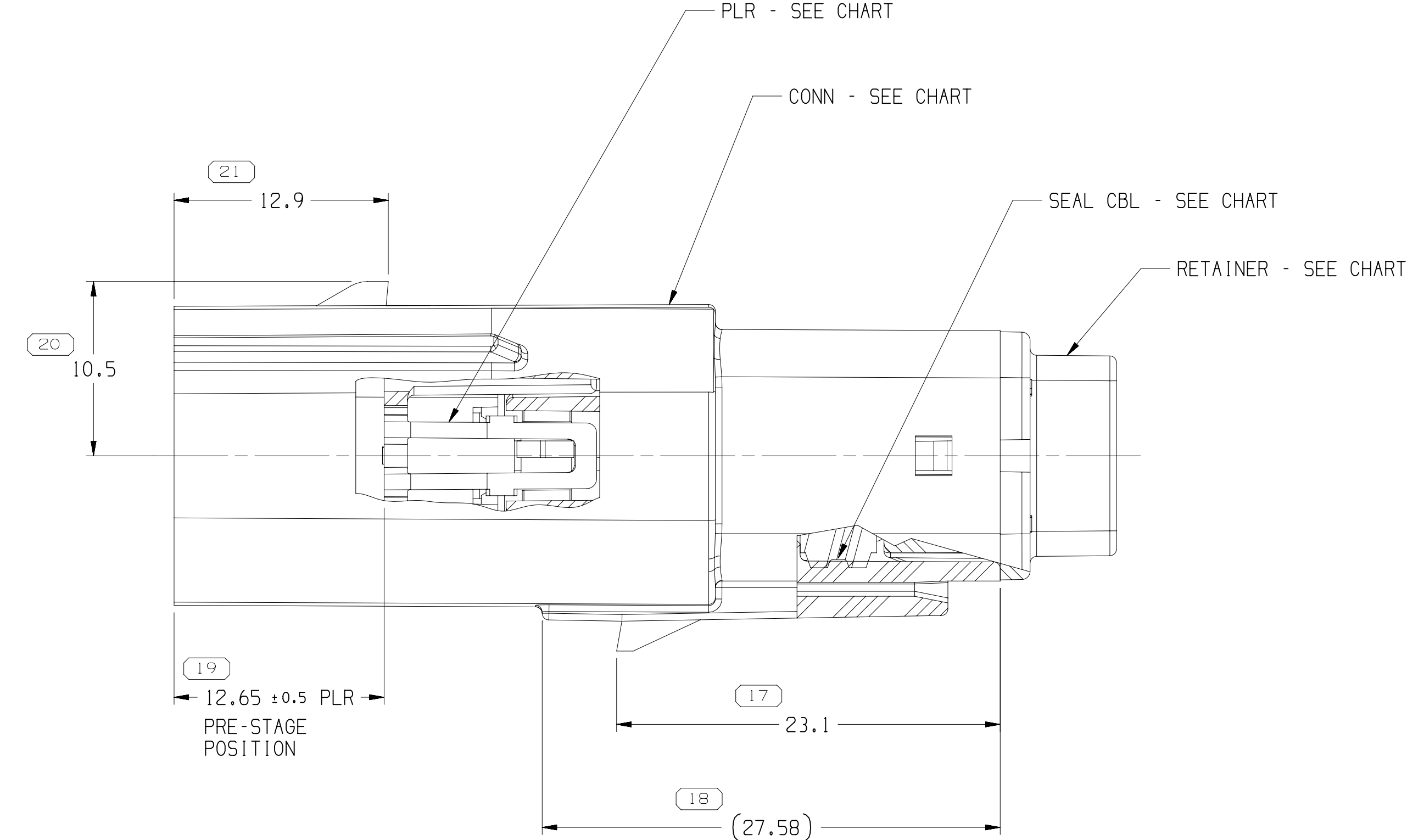
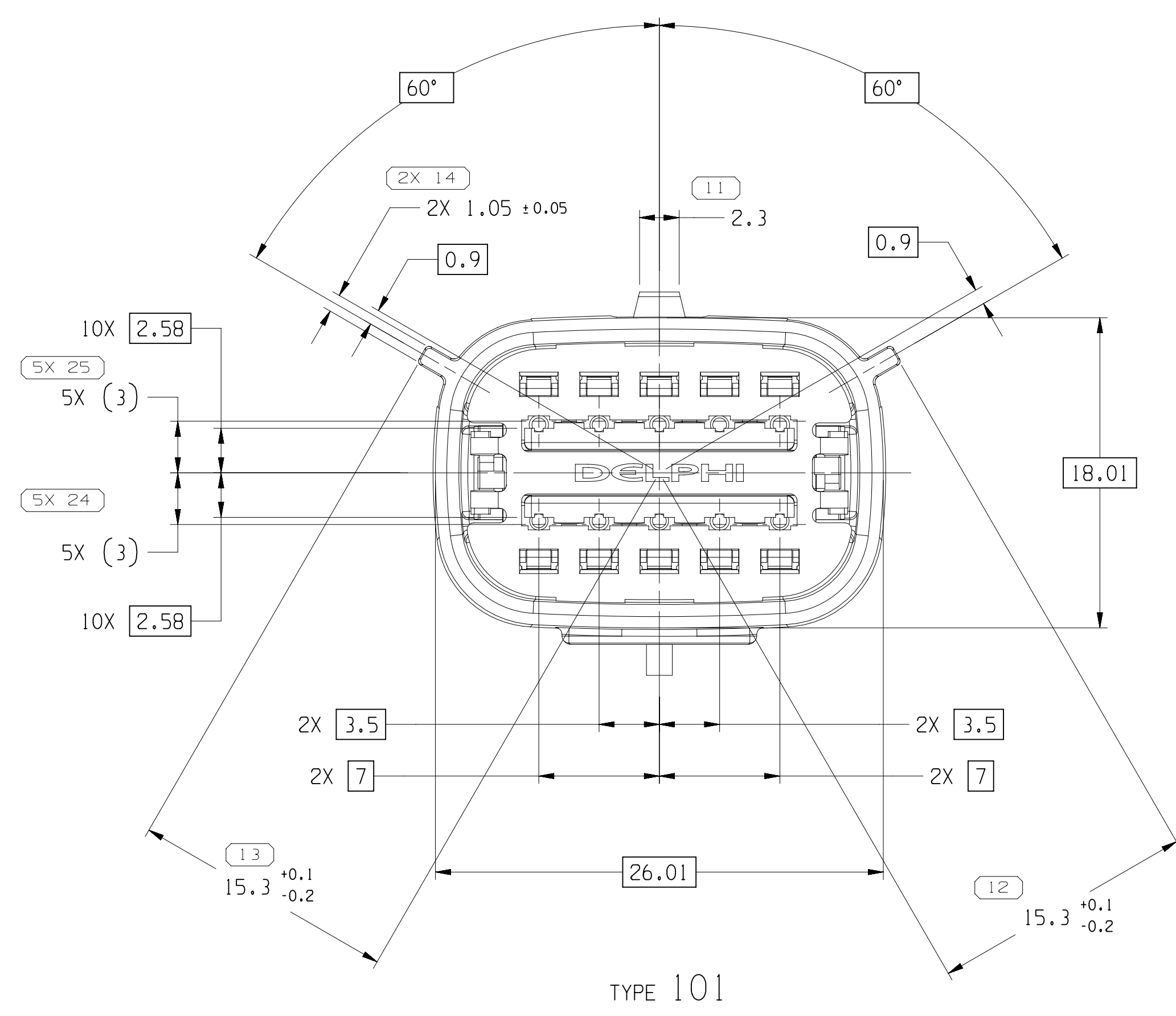
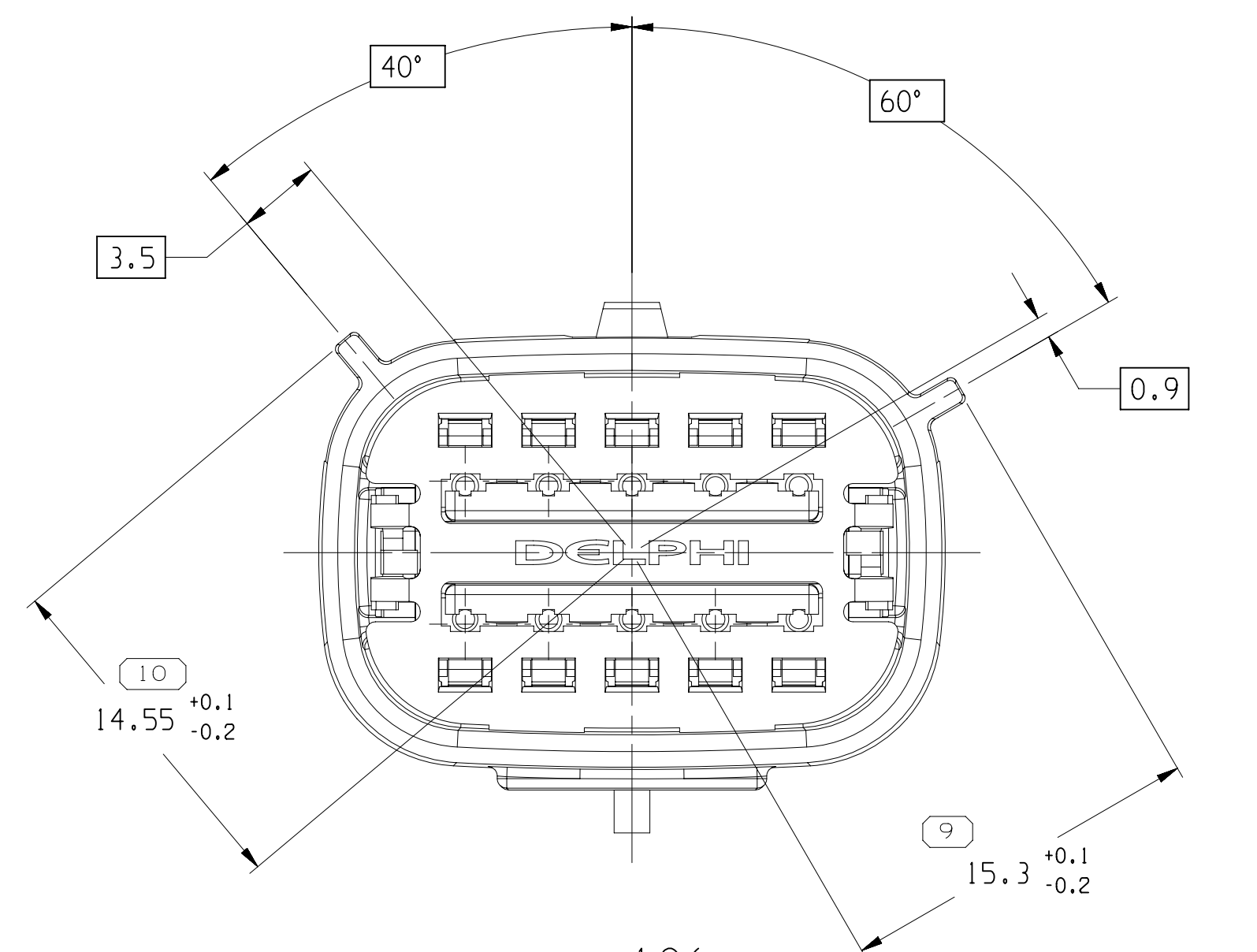


SYMBOL DEFINITION		
A DIMENSION WITHOUT AN INSPECTION REPORT SYMBOL <input type="checkbox"/> DOES NOT REQUIRE INSPECTION. IT MAY BE CONTROLLED ON THE INDIVIDUAL COMPONENT DRAWING.	TOTAL NO OF INSPECTIONS REQUIRED	34
	LAST NO. USED	25



QW 574505				REVISION HISTORY		AUTH	DR	APV
10A13.1	QW	REV	ZONE					
10A13.1	QW	REV 00		15514007 = WAS PE240496 REV'D & RELEASED; 15514008 = WAS PE240493 REV'D & RELEASED; 15514009 = WAS PE240497 REV'D & RELEASED; 15514010 = WAS PE240495 REV'D & RELEASED; 15514011 = WAS PE240496 REV'D & RELEASED; 15514012 = WAS PE240497 REV'D & RELEASED	421258	MAB	GGI	
08AP13.1	QW	02	-	ALL PARTS - 23.1 = WAS 19.95, (27.56) WAS (24.42) AND (22.26) WAS (21.91)	422029	JOM	JGM	AS
08AP13.1	QW	03	-	ALL PARTS - REVISED GRAPHICS	422030	JOM	JGM	AS
03NOV13.1	QW	04	-	ALL PARTS - UPDATED CONNECTION, PLR AND RETAINER	424464	CER	GGI	
05DEC13.1	QW	05	-	ALL PARTS - ADDED "ACCEPTED CABLE O.D." NOTE	424877	GGI	GGI	
19FEB14.1	QW	06	-	ALL PARTS - 12.45 & 0.5 WAS 13.2 AND UPDATED RETAINER	425643	AGC	AGC	
17OC14.1	QW	07	-	ALL PARTS - UPDATED CONNECTION, PLR, RETAINER AND RELATED DIM	427915	DRA	JGM	AS
28NOV15.1	QW	08	-	ALL PARTS - UPDATED PART AVAILABILITY	431286	CER	DAT	
18FEB15.1	QW	09	-	ALL PARTS - UPDATED RETAINER TO THE LATEST REV	431413	MHY	AGV	
23FEB16.1	QW	10	-	15514008-12 - UPDATED PART AVAILABILITY	432086	NHN	JVM	GDL
15AUG17.1	QW	11	-	ALL PARTS - REMOVED ASSEMBLY ACCEPTED CABLE O.D. NOTE AND 15514007 - REVISION DATA WAS 07 FOR AUTH NUMBER 431413	437396	SLG	SLG	GDL
25AUG18.1	QW	12	-	ADDED "SHT 1 OF 2"	438745	AHG	AGV	
25AUG19.1	QW	13	-	ALL PARTS - ADDED "PUNCH PARTS CONFIGURATIONS", "ASSEMBLIES WITH 1MM CLIP SLOT" & "RETAINER REMOVAL FORCE" NOTES	443309	JLL	AGV	ACV



15514812	07	AC	106	15514805	15514896	15514830	15514892	F
15514811	07	AC	105	15514804	15514896	15514830	15514892	E
15514810	07	AC	104	15514803	15514896	15514830	15514892	D
15514809	07	AC	103	15514802	15514896	15514830	15514892	C
15514808	07	AC	102	15514801	15514896	15514830	15514892	B
15514807	06	AC	101	15514800	15514896	15514830	15514892	A
PART NO	REV	N/P	TYPE	CONNECTOR	PLR	RETAINER	SEAL CBL	USCAR OPTION

- NOTES
1. UNLESS OTHERWISE SPECIFIED AND/OR INDICATED:  
DIMENSIONS ARE TO FACE OF VIEW SHOWN AND  
AUTOMATICALLY ROUNDED BY COMPUTER FOR INSPECTION  
(SEE MATH MODEL FOR PRECISE TOOL PATH DATA FOR ALL  
OTHER DIMENSIONS NOT SHOWN BUT REQUIRED FOR TOOL  
BUILD, SEE MATH MODEL FOR PRECISE TOOL PATH DATA.
  2. THIS PRODUCT IS NOT CATEGORIZED AS AN APPEARANCE ITEM, MINOR  
IMPERFECTIONS INCLUDING, BUT NOT LIMITED TO, FLOW MARKS, COLOR  
BLEMISHES, GATE VESICLE, AND SOFT FLASH THAT DO NOT AFFECT THE  
FIT, FORM, OR FUNCTION OF THE PART ARE PERMISSIBLE PER ENP.4-3.CS.01.EN.
  3. FOR APPLICATION DATA SEE THE INDIVIDUAL APPLICATION DRAWINGS.
  4. SEALING CODE 4 - DESIGN WILL MEET REQUIREMENTS OF SAE/USCAR-2  
CONNECTOR SYSTEM ENVIRONMENTAL TEST FLOWCHART  
(PRESSURE/VACUUM AND SUBMERSION).
  5. FOR DIFFERENT PUNCH PATTERN CONFIGURATIONS (IF AVAILABLE) SEE SHEET 2
  6. FOR ASSEMBLIES WITH ILMV CLIP SLOT SEE DRAWING 35117335
  7. MINIMUM RETAINER REMOVAL FORCE: 78N.

LINE DRAWN THRUOUT PART NUMBER INDICATES PHYSICAL PARTS ARE NOT AVAILABLE FOR ORDERING.	
PART NUMBERS THAT DO NOT HAVE A LINE PRESENT INDICATE THAT PHYSICAL PARTS ARE AVAILABLE FOR ORDERING.	
CONTACT RETLEY SALES TO ASSURE AVAILABILITY	
PART TYPE	
PART DRAWING	
STYLE	
VOLUME (SHEET)	DIST# CODE
UNLESS OTHERWISE SPECIFIED	
THIS DOCUMENT IS IN ACCORDANCE WITH ASME Y14.9M-1994 AS REVISED BY THE 1995 EDITION. DIMENSIONING AND TOLERANCING ARE GOVERNED BY Z39.2-1993. SEPARATE DETERMINATION OF TOLERANCE MAP ALLOWED SEPARATELY. REPRODUCERS OF DATA REPRODUCED.	
ALL DIMENSIONS ARE IN MILLIMETERS	
REFERENCE	
THIRD ANGLE PROJECTION	DO NOT SCALE USE MATH DATA

<div style="text-align: center;"> <b>•APTIV•</b>            CONNECTION SYSTEMS            WAREHOUSE            COPYRIGHT 2013 APTIV AUTOMOTIVE, ALL RIGHTS RESERVED.         </div>							
THIS DRAWING IS THE PROPERTY OF APTIV AND CONTAINS APTIV TRADE SECRETS, KNOWLEDGE, AND INFORMATION. UNAUTHORIZED REPRODUCTION, COPIING, OR DISSEMINATION OF THIS DOCUMENT OR ITS RELATES MAY VIOLATE U.S. AS WELL AS COMMERCIAL AND INDUSTRIAL PROPERTY LAWS OF OTHER COUNTRIES. REPRODUCTION IS PROHIBITED.							
DATE				DATE			
DR				DATE			
APPROVED	MICHEL BERNAL			10/1/13			
APPROVED	MICHEL BERNAL			11/11/13			
APPROVED	GERARDO GOMEZ, I.			18/11/13			
SUBSTANCES OF CONSERVATION AND RECYCLED CONTENT FOR APTIV (D940401)							
MATERIALS <b>SEE CHART</b>							
DRAWING NAME: TAXI ASM CONN 10 M CCS 1.5 SLD							
DRAWING NUMBER: <div style="font-size: 2em; text-align: center;">15514813</div>							
SIZE	SCALE	1	2	3	4	5	6
A1 x 3	4:1	1	1/2	1	1/2	2	1/3

# Mouser Electronics

Authorized Distributor

Click to View Pricing, Inventory, Delivery & Lifecycle Information:

[Aptiv:](#)  
[15514808](#)