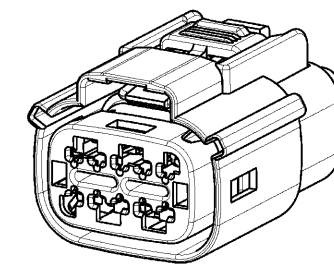
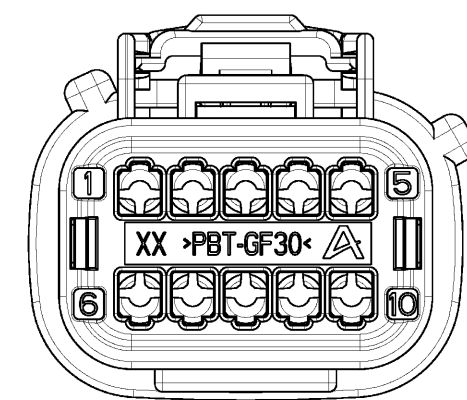


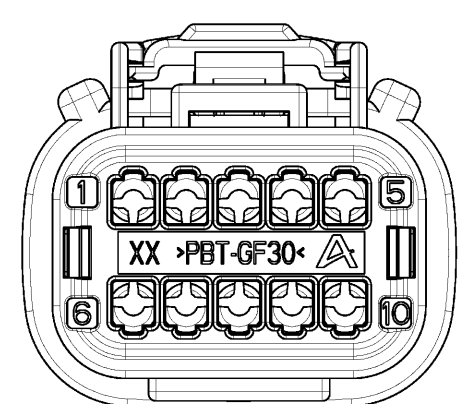
EUR 621 112 129 PMS



Technical drawing of the rear view of the device. It shows a rectangular base with rounded corners and a central rectangular area containing eight circular components arranged in two rows of four. The overall width is dimensioned as (28,71) and the overall height as (24,74). The drawing is a line art representation with no shading.



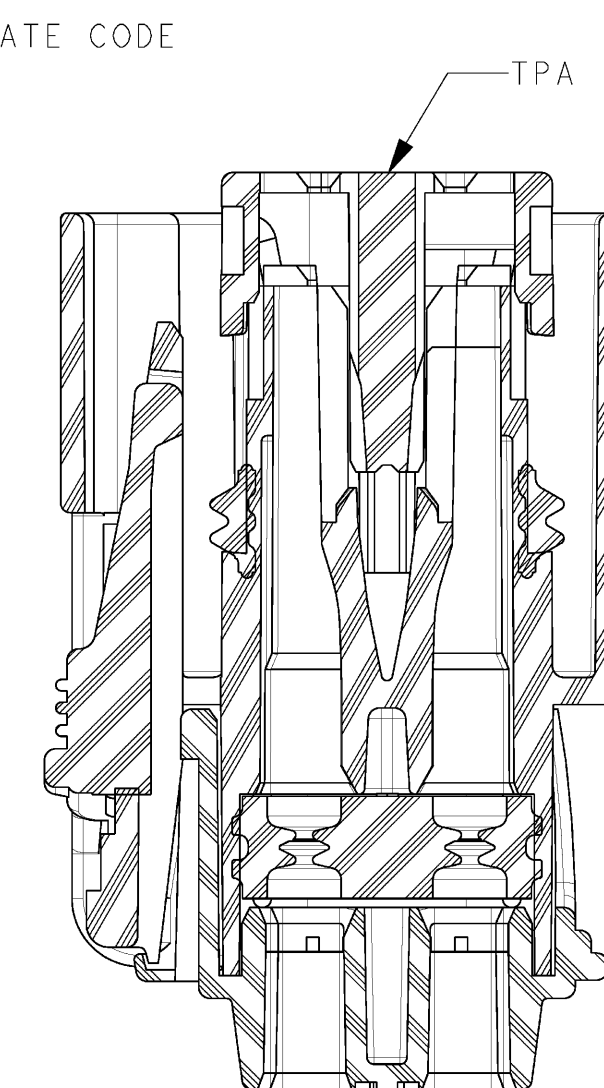
OPTION-B



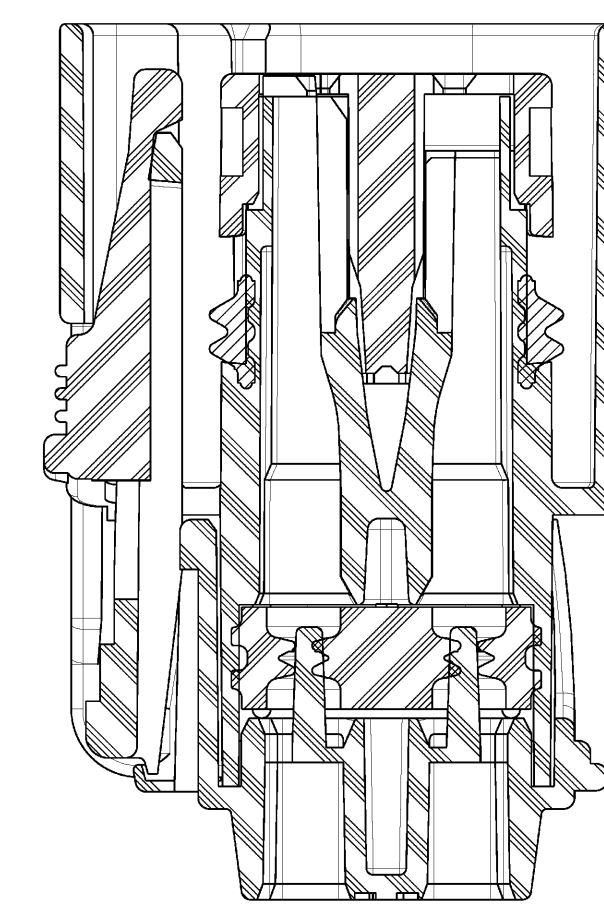
OPTION-D

Technical drawing of the rear view of the seat assembly. The drawing shows the rear of the seat with a central backrest and two side supports. Dimensions are indicated with arrows and text:

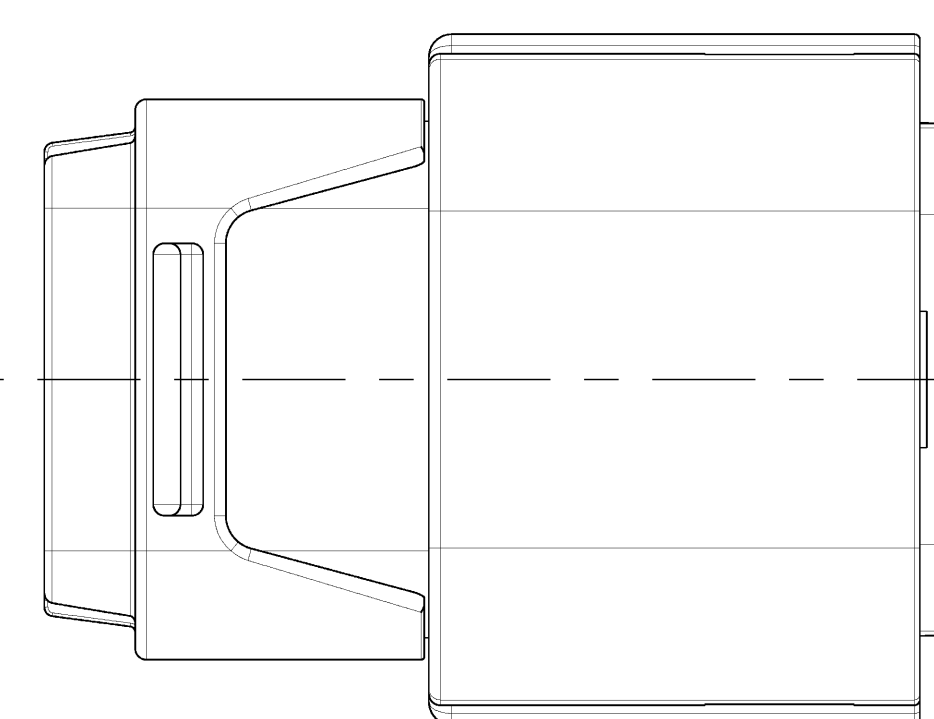
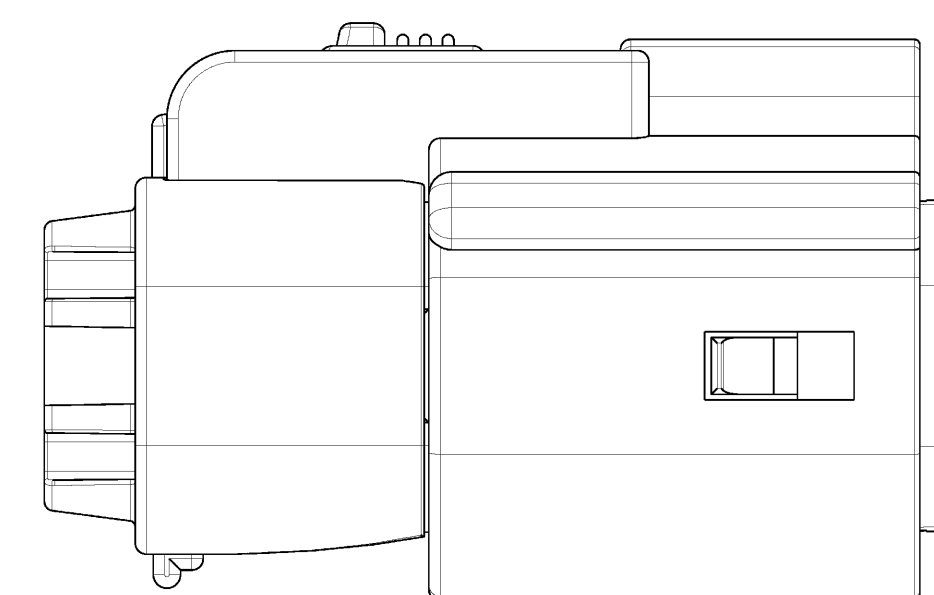
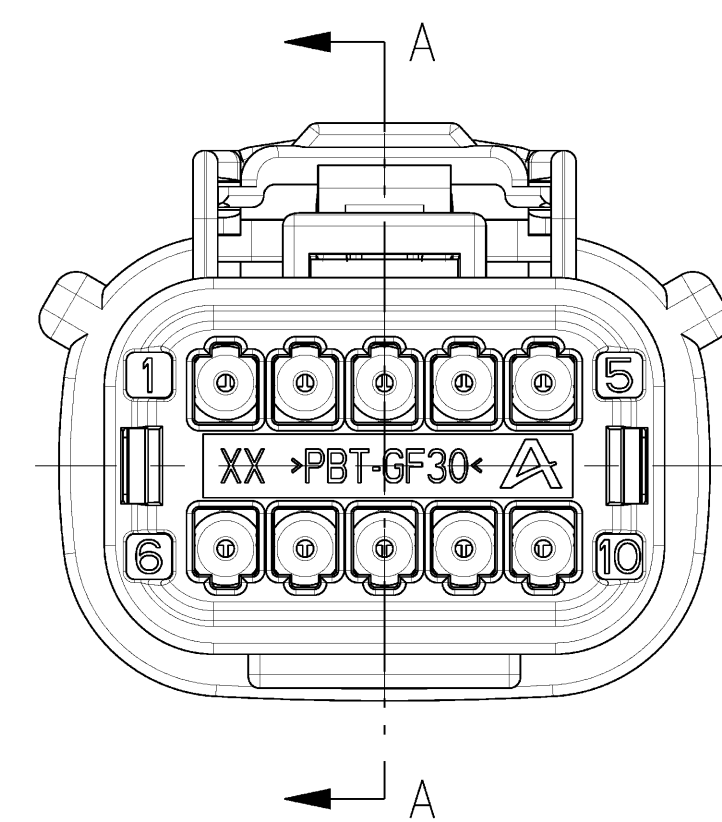
- Overall width: 40.40" (10.25 / 0.35)
- Overall height: (38.60)
- Assembly point: ASSEMBLY POINT (indicated by a dashed line and an arrow pointing to the top of the seat backrest).



SECTION A - A
CPA & TPA IN PRE-
ASSEMBLY POSITION



SECTION A-A
CPA & TPA IN FINAL
ASSEMBLY POSITION



- 1) MAXIMUM TEMPERATURE CLASS:
CLASS 3 (125°C)
- 2) TEST METHOD PER:
SAE/USCAR-2 REV-4
SAE/USCAR-20 REV-2
- 3) CONNECTOR MAY BE USED WITH THE FOLLOWING RANGE
OF WIRE SIZES/TYPES:
- SIZE 22 GAGE - 16 GAGE - 1.50mm MIN O.D. TO 2.41mm MAX O.D.
- TYPE TXL (ML123-A /MS-8288)
- CONTACT MVL ENGINEERING REGARDING USE OF OTHER WIRE
TYPES AND/OR SIZES
- 4) CONNECTOR MAY BE USED WITH THE FOLLOWING TERMINALS:
- MVL APEX150 WITH WIRE SIZES DEFINED IN NOTE 3
- SEE MVL DRAWING J54009 FOR SPECIFIC PART NUMBERS
AND CRIMPING REQUIREMENTS
- CONTACT MVL ENGINEERING REGARDING USE OF COMPATIBLE
NON MVL TERMINALS
- 5) ANNUAL QUALITY REQUIREMENTS:
IT IS PERMISSIBLE TO PERFORM CONTINUOUS CONFORMANCE
TESTING ON MVL SPECIFICATION #AQA-001 INSTEAD OF ANNUAL LAYOUT
AND ANNUAL PV REQUIREMENTS OF QS-9000 SECTION 2 AND
SAE/USCAR-20 REV-4
- 6) INTERFACE REQUIREMENTS:
MVL WITH MVL CONNECTORS AS SPECIFIED IN CHART AND
WITH DEVICES THAT CONFORM TO USCAR ISO-S-010-2-Z01

COMMON PART NUMBER CHART ONE EACH INCLUDED IN ASSEMBLY					
ITEM	PART NUMBERS		DESCRIPTION	MATERIAL	COLOR
	MVL	APTIV			
2	54241068		TPA FEWALE	PBT GF30	NATURAL
5	54241067		RING SEAL	SILICONE	BURNT ORANGE
6	54241068		WAL SEAL	SILICONE	LIGHT BLUE



APPROVAL LEVEL

—

SHEET

1

of

1

SCALE 3:1

Mouser Electronics

Authorized Distributor

Click to View Pricing, Inventory, Delivery & Lifecycle Information:

[Aptiv:](#)
[13737245](#)