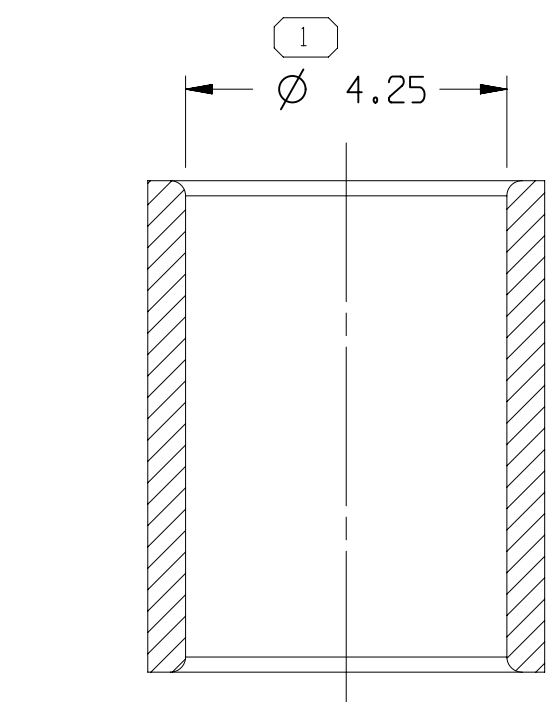
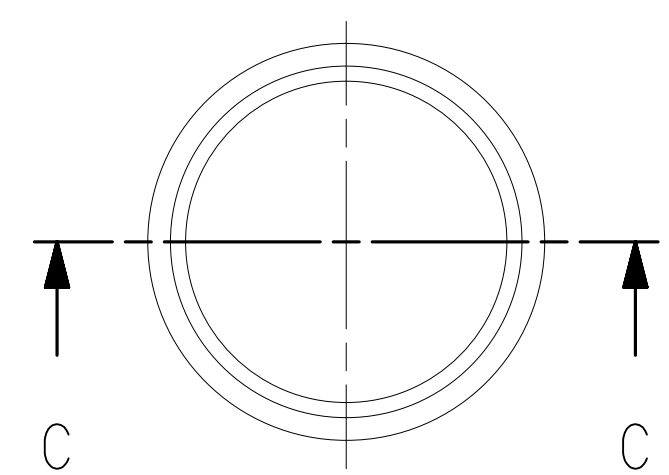
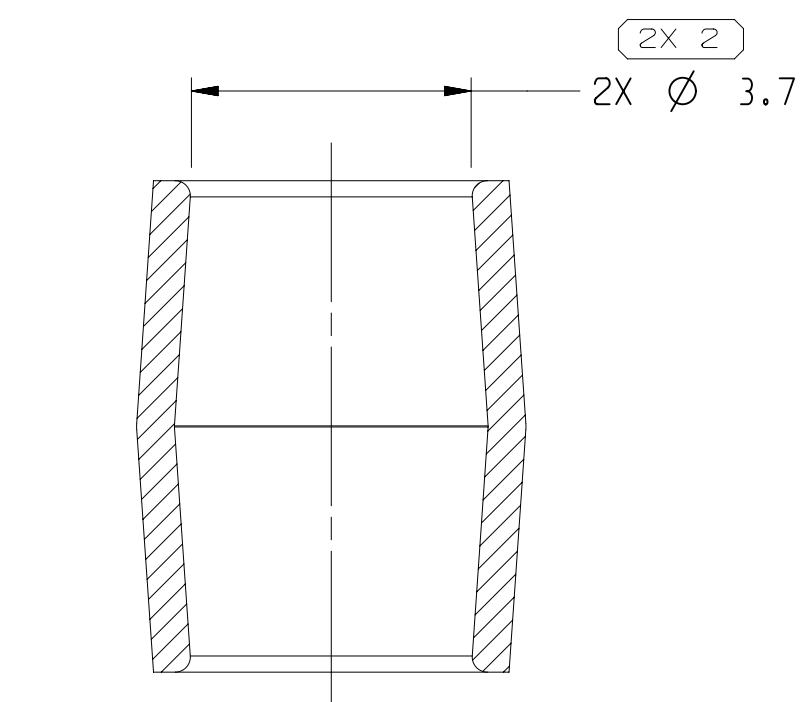
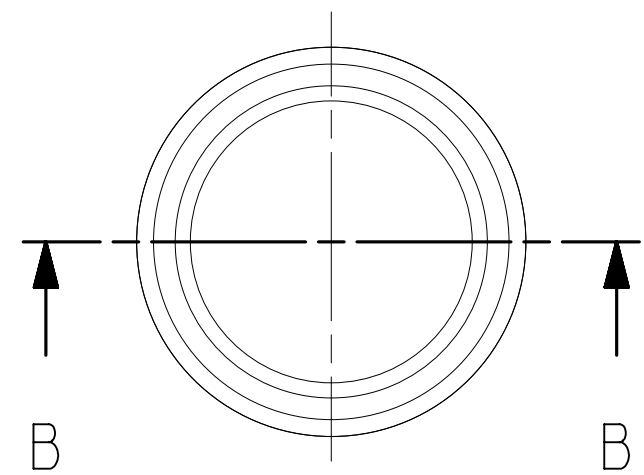


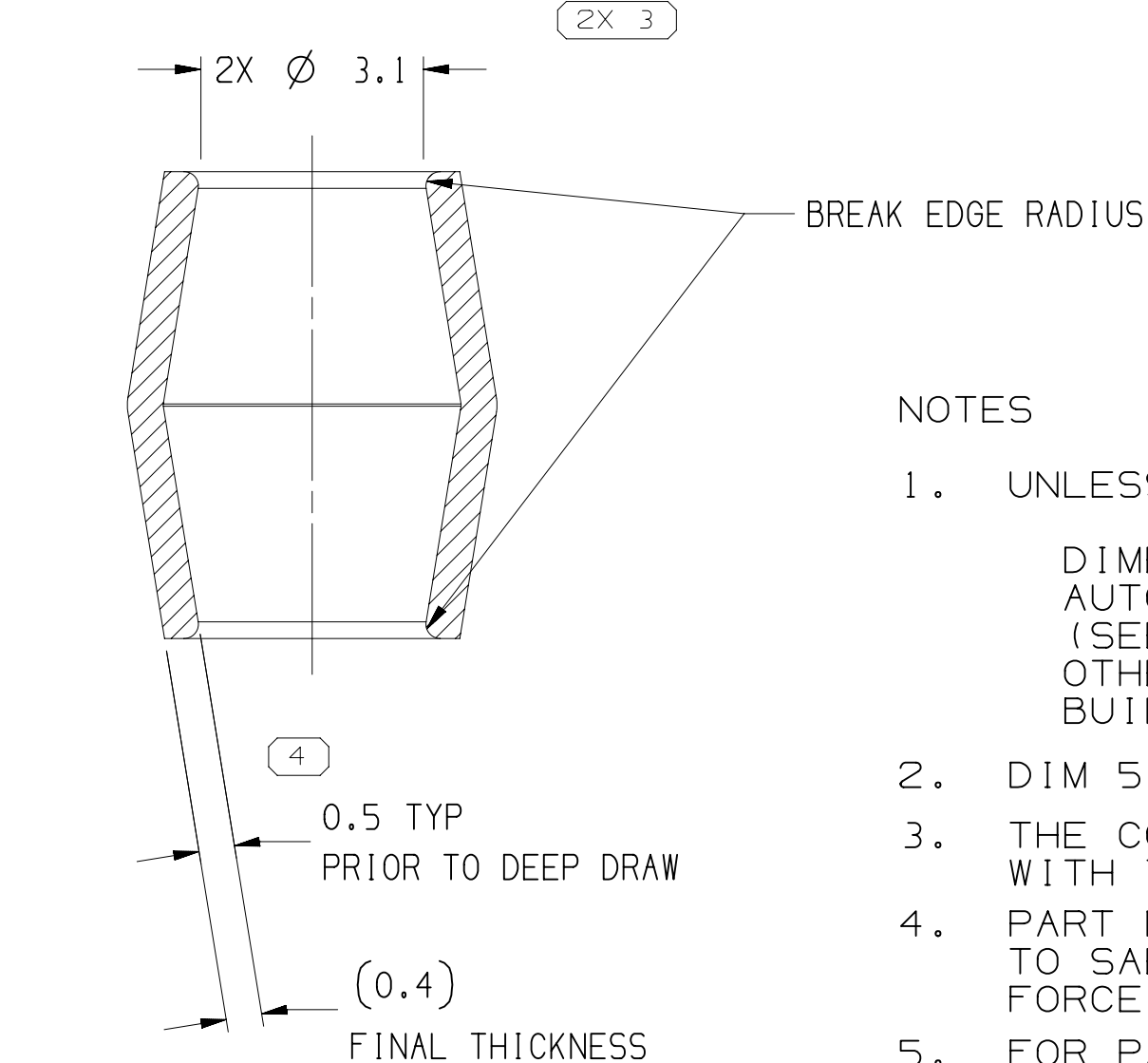
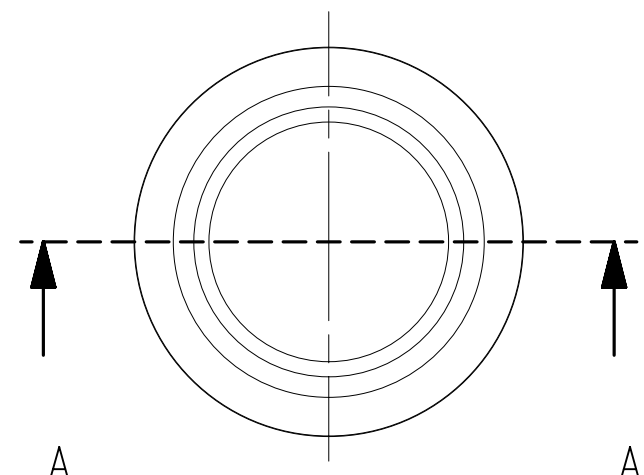
SECTION D - D
TYPE 104
SAME AS TYPE 103
EXCEPT AS SHOWN



SECTION C - C
TYPE 103
SAME AS TYPE 101
EXCEPT AS SHOWN




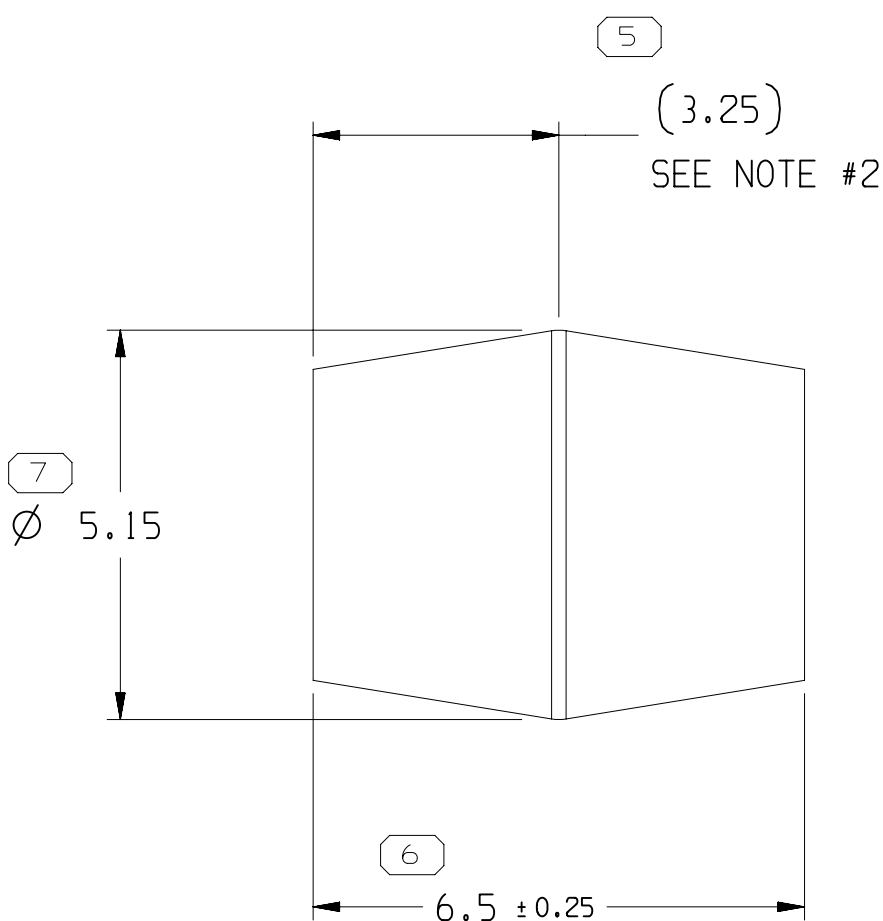
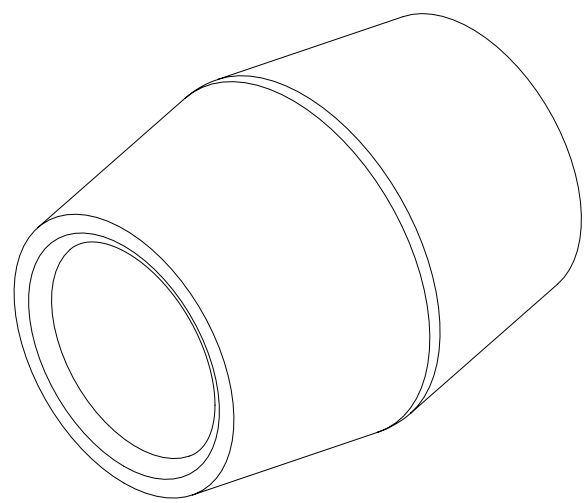
SECTION B - B
TYPE 102
SAME AS TYPE 101
EXCEPT AS SHOWN



SECTION A - A
TYPE 101

33292550	01	AC	104	3.9 - 4.3	10 GA.
13737700	02	AF	103	3.84 - 4.09	10 GA.
13737699	02	AE	102	3.30 - 3.46	12 GA.
13737698	02	AF	101	2.57 - 2.87	14 GA.
PART NO	REV	N/P	TYPE	PRIMARY CONDUCTOR INSULATION DIAMETER	SHIELDED, JACKETED CABLE SIZE

SYMBOL DEFINITION			MISSING SYMBOLS	
A DIMENSION WITHOUT AN INSPECTION REPORT SYMBOL  DOES NOT REQUIRE INSPECTION. IT MAY BE CONTROLLED ON THE INDIVIDUAL COMPONENT DRAWING.	TOTAL NO OF INSPECTIONS REQUIRED	11	NO MISSING SYMBOL NUMBER	
	LAST NO. USED	9		



NOTES

- UNLESS OTHERWISE SPECIFIED AND/OR INDICATED:
DIMENSIONS ARE TO FACE OF VIEW SHOWN AND AUTOMATICALLY ROUNDED BY COMPUTER FOR INSPECTION (SEE MATH MODEL FOR PRECISE DIMENSIONS). FOR ALL OTHER DIMENSIONS NOT SHOWN BUT REQUIRED FOR TOOL BUILD, SEE MATH MODEL FOR PRECISE TOOL PATH DATA.
- DIM 5 IS THE POINT OF MEASUREMENT FOR DIM 7
- THE COMPONENTS ON THIS TAXI ARE USED IN CONJUNCTION WITH THE COMPONENTS ON TAXI 13737701.
- PART MECHANICAL AND ENVIRONMENTAL IS DESIGN TO CONFORM TO SAE/USCAR-37 (AUG 2008): CRIMP SHIELDED CABLE RETENTION FORCE IS 175N MIN.
- FOR PART 33292550 PROCESS SENSITIVE DIMENSION IS DIM #9.

PLATING NOTE

OVERPLATE: MATTE TIN PLATE
99.9% 0.00008 INCHES MIN PER ASTM B545

SEE NOTE #5	
7	PROCESS SENSITIVE DIMENSION
DIMENSIONS ENCLOSED IN () INDICATE REFERENCE DIMENSIONS AND NO TOLERANCE LIMITS ARE ESTABLISHED	
DIMENSIONAL RANGE (MM)	CHART D
FROM 0 TO 12	> 12
TOLERANCE UNLESS OTHERWISE SPECIFIED	
+0.1	+0.2
ANGULAR TOLERANCE	+2°

A LINE DRAWN THROUGH A PART NUMBER INDICATES THAT PHYSICAL PARTS ARE NOT AVAILABLE FOR ORDERING.	
PART NUMBERS THAT DO NOT HAVE A LINE PRESENT INDICATE THAT PHYSICAL PARTS ARE AVAILABLE FOR ORDERING.	
CONTACT APTIV SALES TO ASSURE AVAILABILITY OF PARTS.	
DWG TYPE	PART DRAWING
STYLE	
VOLUME (CM³)	DISTR CODE
UNLESS OTHERWISE SPECIFIED THIS DOCUMENT IS IN ACCORDANCE WITH ASME Y14.5M-1994 AS AMENDED BY THE GM GLOBAL DIMENSIONING AND TOLERANCING ADDENDUM-2001. SEPARATE PATTERNS OF FEATURES MAY BE GAGED SEPARATELY REGARDLESS OF DATUM REFERENCES.	
ALL DIMENSIONS ARE IN MILLIMETERS	
REFERENCE	
THIRD ANGLE PROJECTION	DO NOT SCALE
USE MATH DATA	

• APTIV • DELPHI PACKARD ELECTRICAL/ELECTRONIC ARCHITECTURE WARREN, OH COPYRIGHT 2008 DELPHI CORPORATION AND/OR ITS AFFILIATES. ALL RIGHTS RESERVED. THIS DRAWING IS THE PROPERTY OF DELPHI CORPORATION AND CONTAINS DELPHI CONFIDENTIAL INFORMATION. THE REPRODUCTION, DISTRIBUTION AND UTILIZATION OF THIS DOCUMENT OR ITS RELATED CAD MATH DATA, AS WELL AS COMMUNICATION OF ANY CONTENT TO OTHERS, WITHOUT EXPRESS AUTHORIZATION, IS PROHIBITED.	
DR	DATE
APVD1 L. JONES	240C08
APVD2 L. JONES	240C08
APVD3 JOE GLADD	310C08
APVD4	
APVD5	
SUBSTANCES OF CONCERN AND RECYCLED CONTENT PER APTIV 10949001	
MATERIAL CDA 110 STOCK TEMPER IS ANNEALED PRIOR TO DEEP DRAWN SEE PLATING NOTE	
DRAWING NAME TAXI SLEV BUSHING ID= OD=	
DRAWING NUMBER 13737697	
SIZE A1	SCALE 10:1
FRAME NO 1 OF 1	SHEET NO 1 OF 1
STG R	REV 11
N/P -	

DWG STATUS					ZONE	REVISION HISTORY		AUTH	DR	APVD 1	APVD 2
DATE	STG	REV	N/P	CHG	-	CREATED PART DRAWING 13737698 WAS PE184446 & RELEASED AT REVISION 02 13737699 WAS PE184447 & RELEASED AT REVISION 02 13737700 WAS PE184545 & RELEASED AT REVISION 02		406568	LLJ	LLJ	RL
14AU09	R	03	-	-		ALL PARTS - DIM 5 WAS 3.25±0.25		408645	LLJ	LLJ	RL
080C09	R	04	-	-		CBL RANGE FOR 13737698 WAS 2.71-287. CBL RANGE FOR 13737700 WAS 3.91-4.07. DIM 1 WAS (4.15) -PRINT MATCH PART ADDED NOTES TO DIM 4 & 5. ADDED NOTES 2 & 3.		409171	LLJ	LLJ	TG
04DE09	R	05	-	-		REVISED PLATING NOTE - MATTE TIN PLATING WAS 0.0008 MICROINCHES.		409601	LLJ	LLJ	JN
30MR10	R	06	-	-		ALL PARTS - ADDED SAE NOTE		410346	HRS	HRS	WTM
08JN10	R	07	-	-		ALL PARTS - REVISED PLATING NOTE, THK CALLOUT WAS 0.00008 MICROINCHES		410972	AJP	JAA	JN
09NO15	R	08	-	-		33292550 - RELEASED		430970	AHG	AHG	BT
18JL16	R	09	-	-		33292550 - ADDED PROCESS SENSITIVE DIMENSION NOTE AND UPADTED PART AVAILABILITY		433704	AGC	JVM	BT
09FE18	R	10	-	-		ALL PARTS - UPDATED "USED IN CONJUNCTION" NOTE		439000	DAV	JVM	BT
020C19	R	11	-	-		33292550 - 3.9-4.3 WAS 5.4-6.0 ON INSULATION DIAMETER COLUMN		550102	GLG	GLG	BT

Mouser Electronics

Authorized Distributor

Click to View Pricing, Inventory, Delivery & Lifecycle Information:

[Aptiv:](#)
[13737699](#)