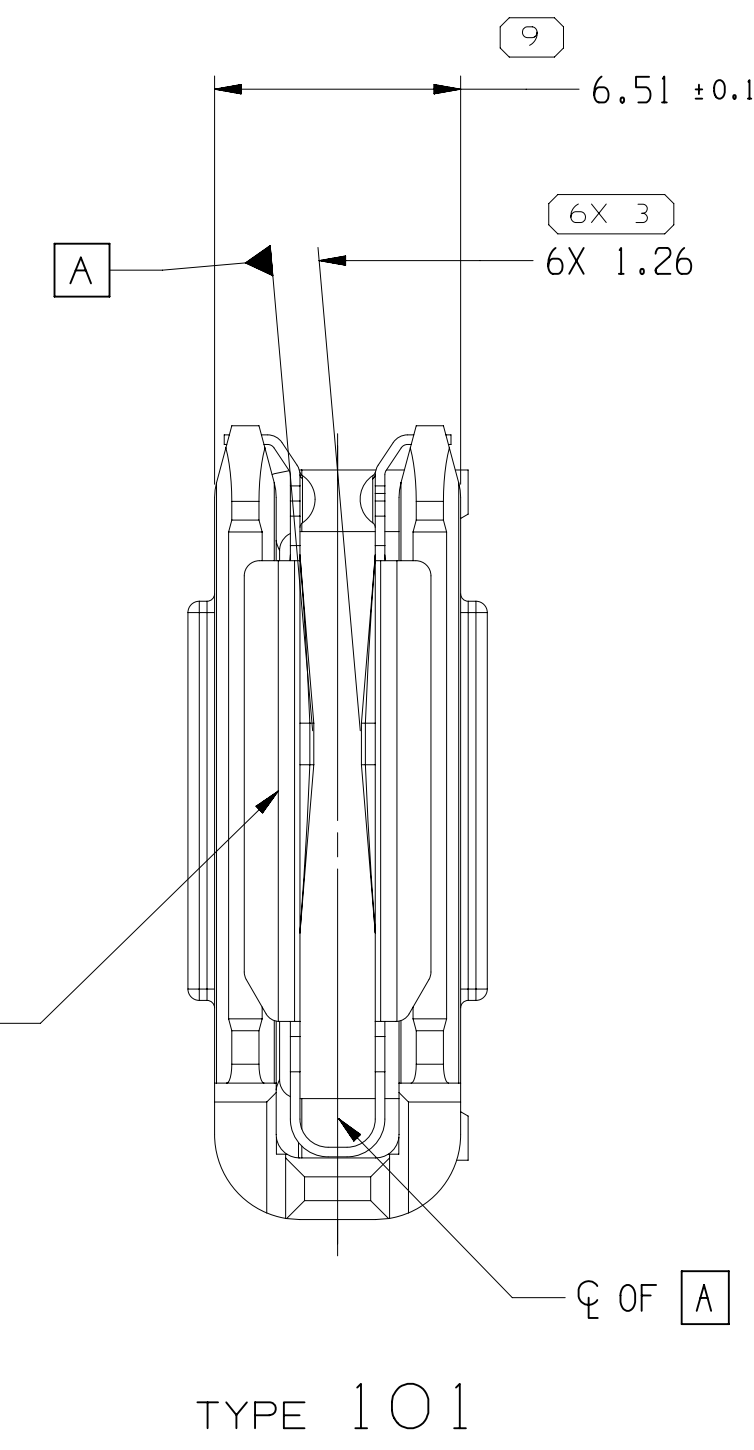
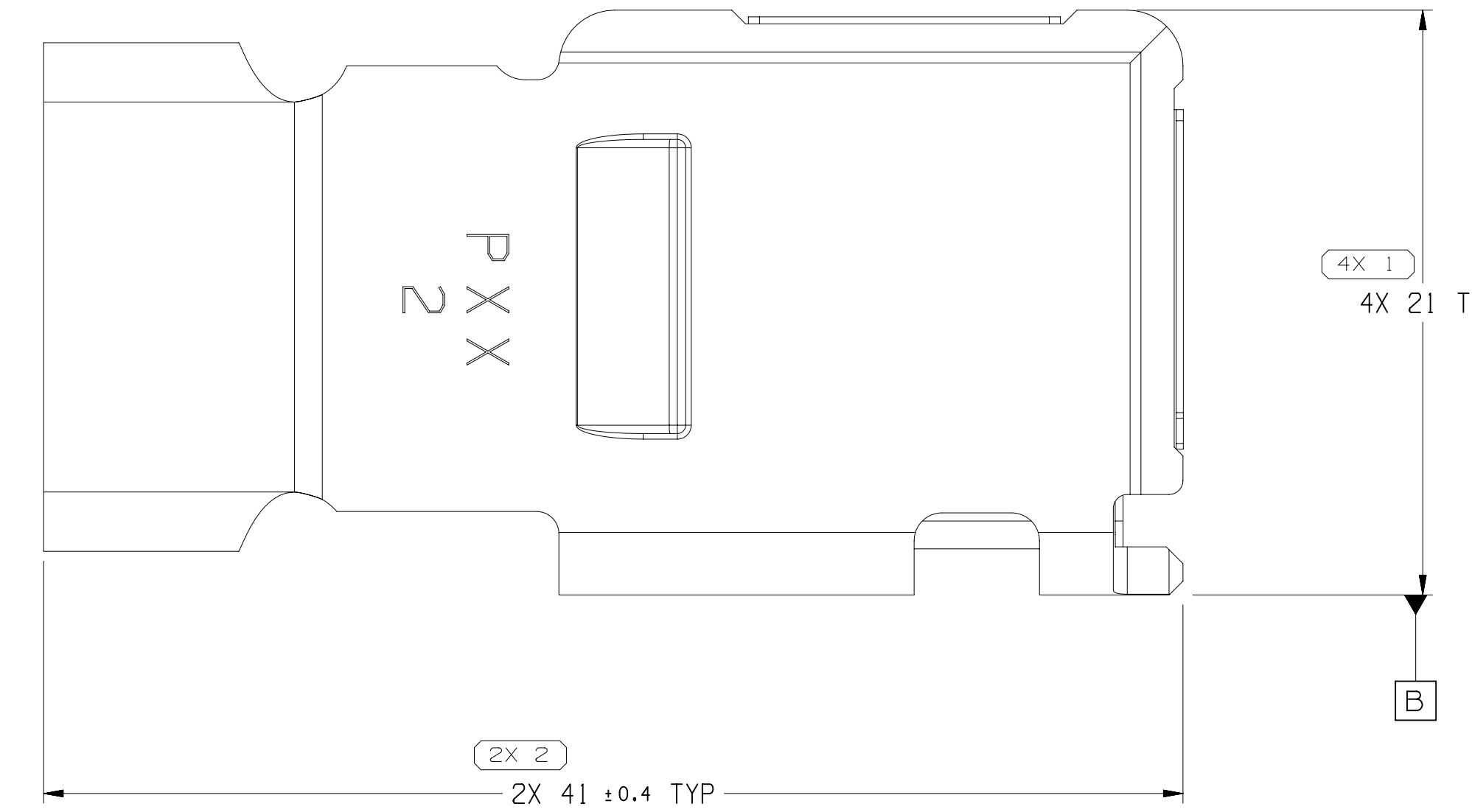
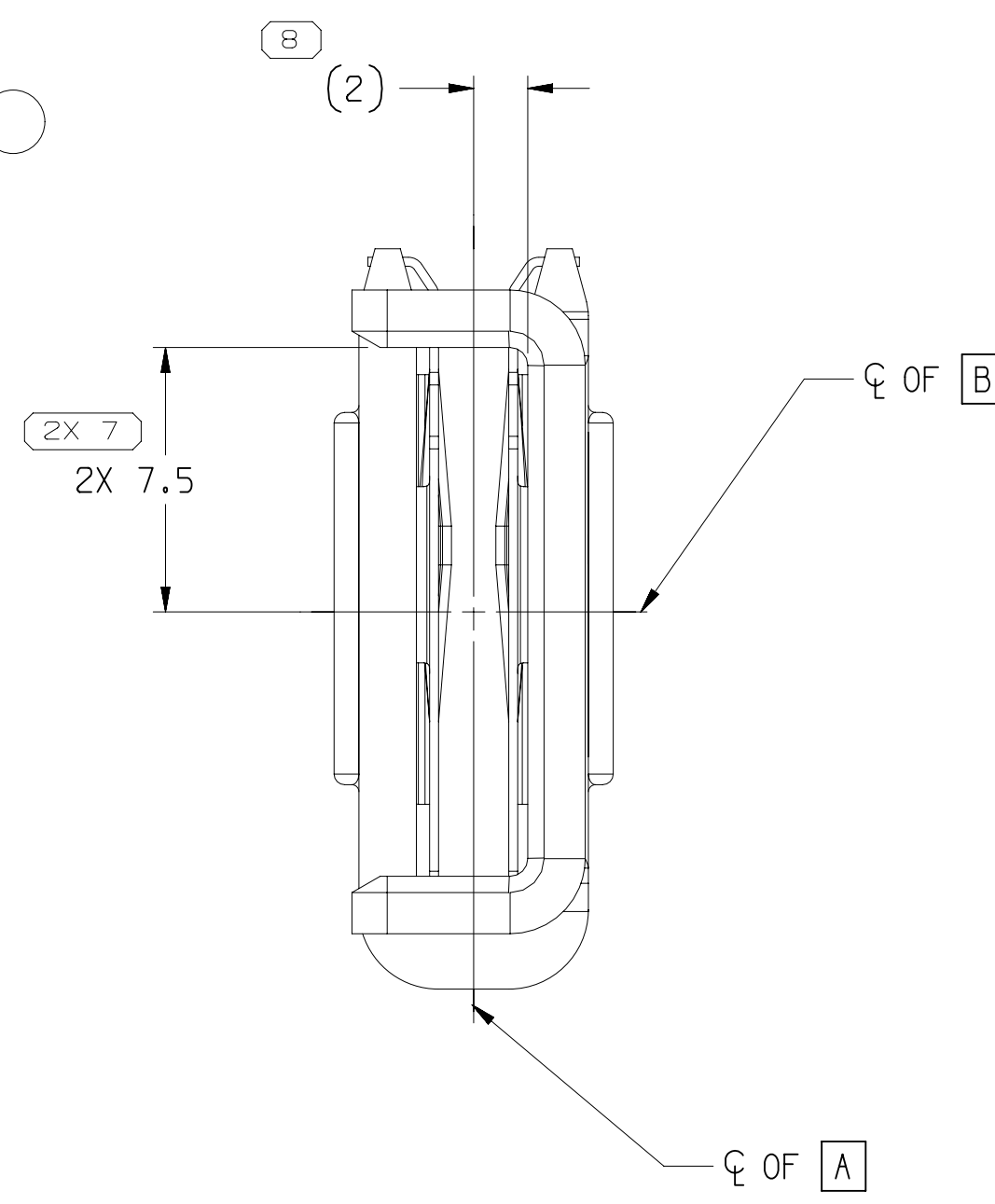
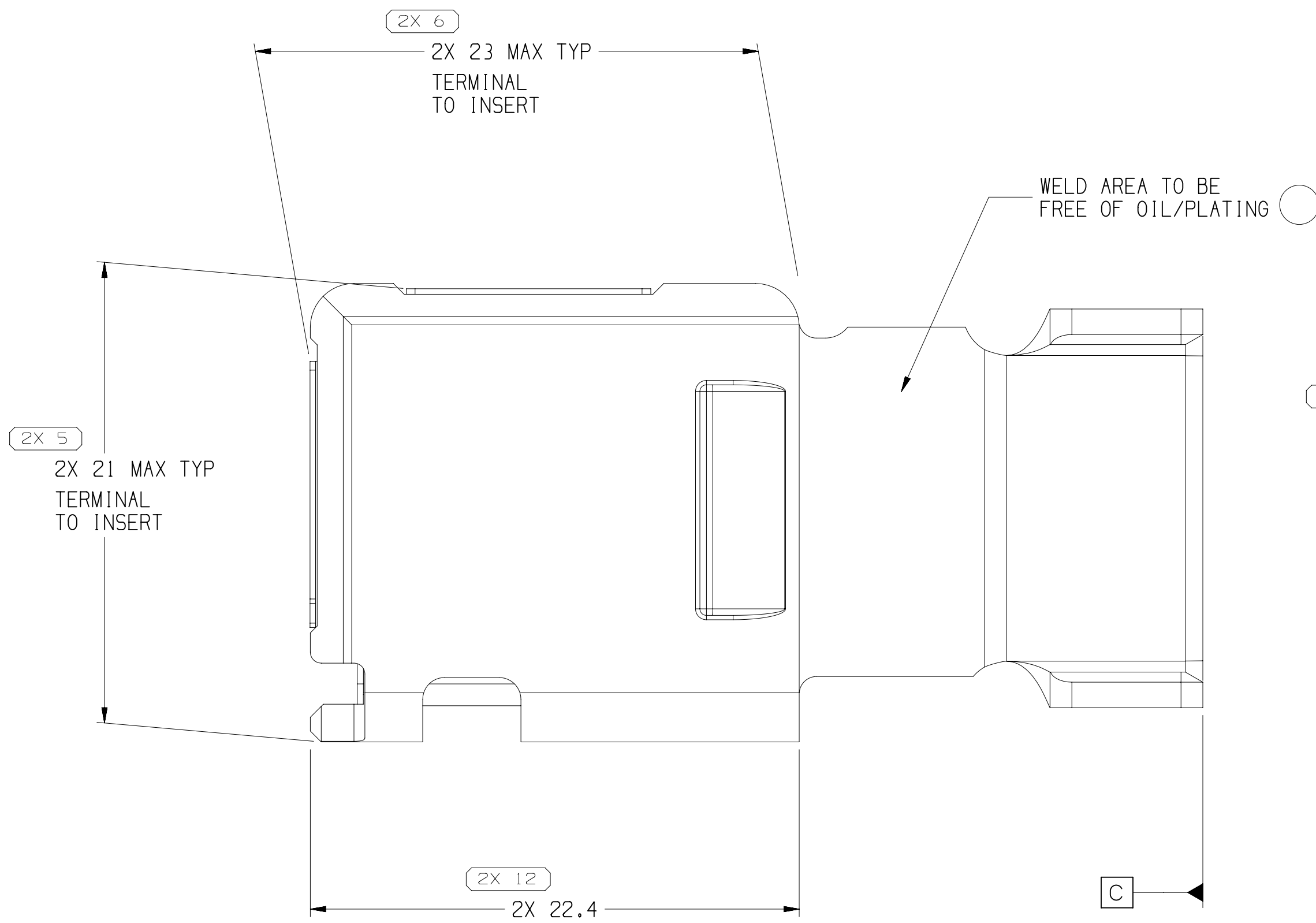


TYPE 102
SAME AS TYPE 101
EXCEPT AS SHOWN



TYPE 101



NOTES

1. UNLESS OTHERWISE SPECIFIED AND/OR INDICATED:

DIMENSIONS ARE TO FACE OF VIEW SHOWN AND AUTOMATICALLY ROUNDED BY COMPUTER FOR INSPECTION (SEE MATH MODEL FOR PRECISE DIMENSIONS). FOR ALL OTHER DIMENSIONS NOT SHOWN BUT REQUIRED FOR TOOL BUILD, SEE MATH MODEL FOR PRECISE TOOL PATH DATA.

2. REFERENCE MATING COMPONENTS OR EQUIVALENT:

TERMINALS IN TAXIS 13784967 AND 13523159

3. DO NOT PROBE, TEST OR OTHERWISE CONTACT THE INTERIOR REGION (THE SPRING OR ANY MOVING PART) OF THIS TERMINAL. SEVERE DAMAGE CAN OCCUR, COMPROMISING THE PERFORMANCE OF THE ELECTRICAL INTERFACE.

4. THESE TERMINAL WILL BE RECEIVED AS LOOSE PCS.

5. TERMINAL MUST BE MADE USING FIN-LUBE 0177 STAMPING LUBE OIL. ANY OTHER LUBRICANT MUST BE APPROVED BY PRODUCT ENGINEERING.

6. COMPONENTS MUST BE PACKAGED IN A SEALED BAG. THE WEIGHT FOR EACH SEALED BAG AND SHIPPING BOX SHALL NOT EXCEED 41bs.(11.8kg) AND 301bs.(113kg) RESPECTIVELY.

7. TERMINALS SHOULD BE PLACED IN A CLEAN CARDBOARD CONTAINER LINED WITH A POLYETHYLENE BAG. BAGS SHALL BE CLOSED DURING STORAGE AND SHIPMENT WITH DESICCANT ENCLOSED.

8. PROCESS SENSITIVE DIMENSION FOR TYPE 101 IS DIM #3
PROCESS SENSITIVE DIMENSION FOR TYPE 102 IS DIM #13

LINE DRAW THROUGH A PART NUMBER	
EXCLUDES THAT PHYSICAL PARTS ARE NOT AVAILABLE FOR ORDERING.	
PART NUMBER THAT DO NOT HAVE A LINE PRESENT INDICATE THAT PHYSICAL PARTS ARE AVAILABLE FOR ORDERING.	
CONTACT APPLICABLE SALES TO ASSURE AVAILABILITY OF PARTS.	
PART TYPE	
PART DRAWING	
STYLE	DATE
VOLUME (GMT)	DISTR CODE
ID	
UNLESS OTHERWISE SPECIFIED	
THIS DOCUMENT IS IN ACCORDANCE WITH ASME Y14.5M (2018) ALL DIMENSIONS ARE TO FACE UNLESS OTHERWISE SPECIFIED AND UNLESS OTHERWISE SPECIFIED, DIMENSIONS ARE TO FACE UNLESS OTHERWISE SPECIFIED.	
UNLESS OTHERWISE SPECIFIED	
ALL DIMENSIONS ARE IN MILLIMETERS	
THIRD ANGLE PROJECTION	
DO NOT SCALE	
USE MATH DATA	
NX	

CONNECTION SYSTEMS	
WARREN, IL	
COPYRIGHT 2010 APPLICABLE. ALL RIGHTS RESERVED.	
THIS DRAWING IS THE PROPERTY OF APPLICABLE AND CONTAINS APPLICABLE CONFIDENTIAL INFORMATION. THE REPRODUCTION, DISTRIBUTION AND UTILIZATION OF THIS DOCUMENT OR ITS RELATED CAD DATA, AS WELL AS COMMUNICATION OF ANY CONTENT TO OTHERS, WITHOUT EXPRESS AUTHORIZATION, IS PROHIBITED.	
DR	DATE
APPROV: RAFAEL CASTRO	11JAI0
APPROV: RAFAEL CASTRO	11JAI0
APPROV: RAFAEL CASTRO	11JAI0
APPROV:	
SUBSTANCES OF CONCERN AND RECYCLED CONTENT	
SEE DRAWING	
DRAWING NAME	
TAXI ASM TERM F PWR	
PACK 2000 AG SEALED	
DRAWING NUMBER	
13784939	
SIZE	SCALE
A1x3	5:1
SHEET NO 1 OF 2	
REV 12	

DRAWING NUMBER	
13784939	
SIZE	SCALE
A1x3	5:1
SHEET NO 1 OF 2	
REV 12	

13815981	05	AB	102	13795295	13520913	25 - 50	2	6.6 - 15.1	IN-LINE
13801592	08	AB	101	13795295	15496201	25 - 50	2	6.6 - 15.1	RIGHT ANGLE
PART NO	REV	N/P	TYPE	TERM	TERM INSERT	SIZE (MM)	ID	DIAMETER	CONNECTOR MATE DIRECTION
13				12				CABLE	

SYMBOL DEFINITION			MISSING SYMBOLS	
A DIMENSION WITHOUT AN INSPECTION REPORT SYMBOL DOES NOT REQUIRE INSPECTION. IT MAY BE CONTROLLED ON THE INDIVIDUAL COMPONENT DRAWING.	TOTAL NO. OF INSPECTIONS REQUIRED	32	NO MISSING SYMBOL NUMBER	
	LAST NO. USED	13		

DWG STATUS			ZONE		REVISION HISTORY		AUTH		DR		APPROV	
DATE	STO	REV	N/P	CHK								
11JAI0	R	01	-	-		13801592 - RELEASED			409784	RCH	DSE	RCH
18JAI0	R	02	-	-		13801592 - CLARIFIED TERMINAL TO CABLE CLEARANCE DIM, ADDED STATUS COL & CABLE SUBHEADER TO CHART. TERM INSERT WAS 13795295. *CONNECTOR MATE DIRECTION WAS IN-LINE AND DIAM WAS 8-15.4						
01MR10	R	03	-	-		13801592 - REVISED GRAPHICS			410144	RCH	RCH	RCH
01MR10	R	04	-	-		13801592 - REVISED GRAPHICS			410154	RCH	RCH	RCH
23JAI0	R	05	-	-		13801592 - REVISED GRAPHICS			411167	RCH	RCH	RCH
28JAI0	R	06	-	-		ALL PARTS - ADDED DIM 5X 1.26 AFTER WELDING			411200	RCH	RCH	RCH
08SE10	R	07	-	-		13801592 - CORRECTED REV TO 03						
15JAI1	R	08	-	-		ALL PARTS - REMOVED CARRIER STRIP NOTE AND ADDED LOOSE PCS NOTE, VANISHING OIL NOTE & PACKAGE NOTE			415140	JAR	JAR	ACM
05DE11	R	09	-	-		ALL PARTS - ADDED CARRIER STRIP VIEW, REMOVED LOOSE PCS & PACKAGE NOTES AND UPDATED LUBRICANT USE NOTE			416361	JCF	JAA	ACM
28JAI13	R	10	-	-		ALL PARTS-REMOVED CARRIER STRIP NOTE AND ADDED LOOSE PCS NOTE, VANISHING OIL NOTE & PACKAGE NOTE. DIM 4X 21 TYP WAS 4X 20.8) TYP. ADDED DIMENSIONS 6.51 ±0.1, 7.52, 2X 1.96 AND 2X 22.4 AND ON WELDED VIEW DIMS 18 & 2			423133	ACM	RCH	ACM
19JAI17	R	11	-	-		ALL PARTS - ADDED NOTE #8 & TO 13815981			437016	JVM	JVM	DAB
17AJA20	R	12	-	-		DIM (1) PLCI AND 13801592 - 5X 1.26 WAS 5X 1.26						
						ALL PARTS - ADDED *WELD AREA TO BE FREE OF OIL/PLATING* LABEL			552166	LGD	AHY	ERM

33648731

Mouser Electronics

Authorized Distributor

Click to View Pricing, Inventory, Delivery & Lifecycle Information:

[Aptiv:](#)

[13801592](#)