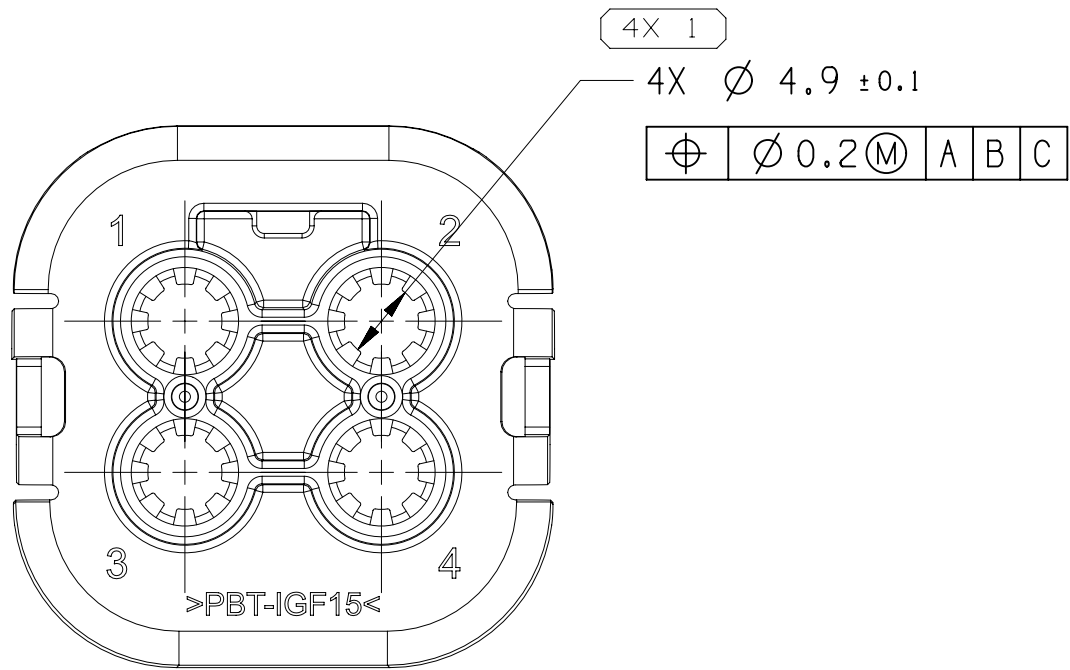


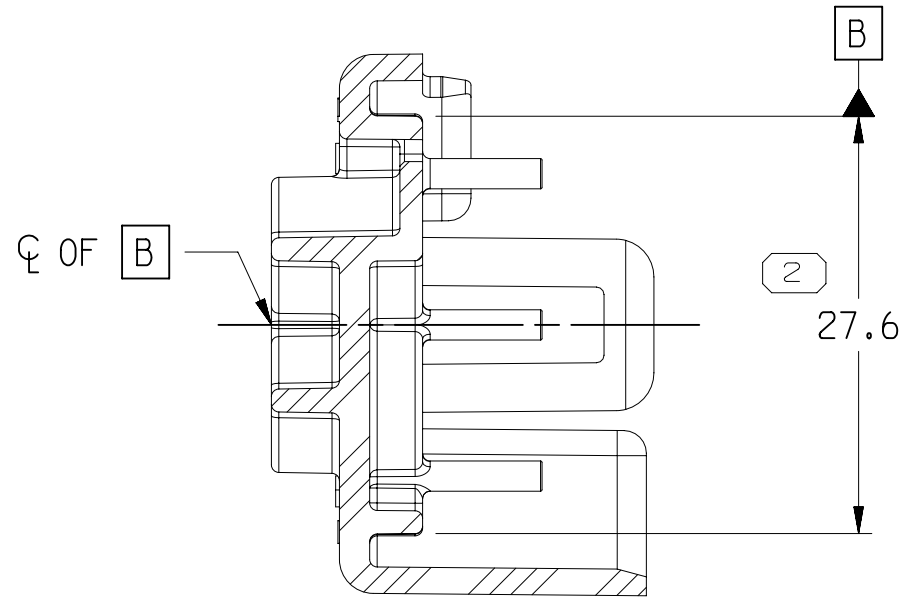
SYMBOL DEFINITION		
A DIMENSION WITHOUT AN INSPECTION REPORT SYMBOL DOES NOT REQUIRE INSPECTION. IT MAY BE CONTROLLED ON THE INDIVIDUAL COMPONENT DRAWING.	TOTAL NO OF INSPECTIONS REQUIRED	49
	LAST NO. USED	17

MISSING SYMBOLS	
NO MISSING SYMBOL NUMBER	

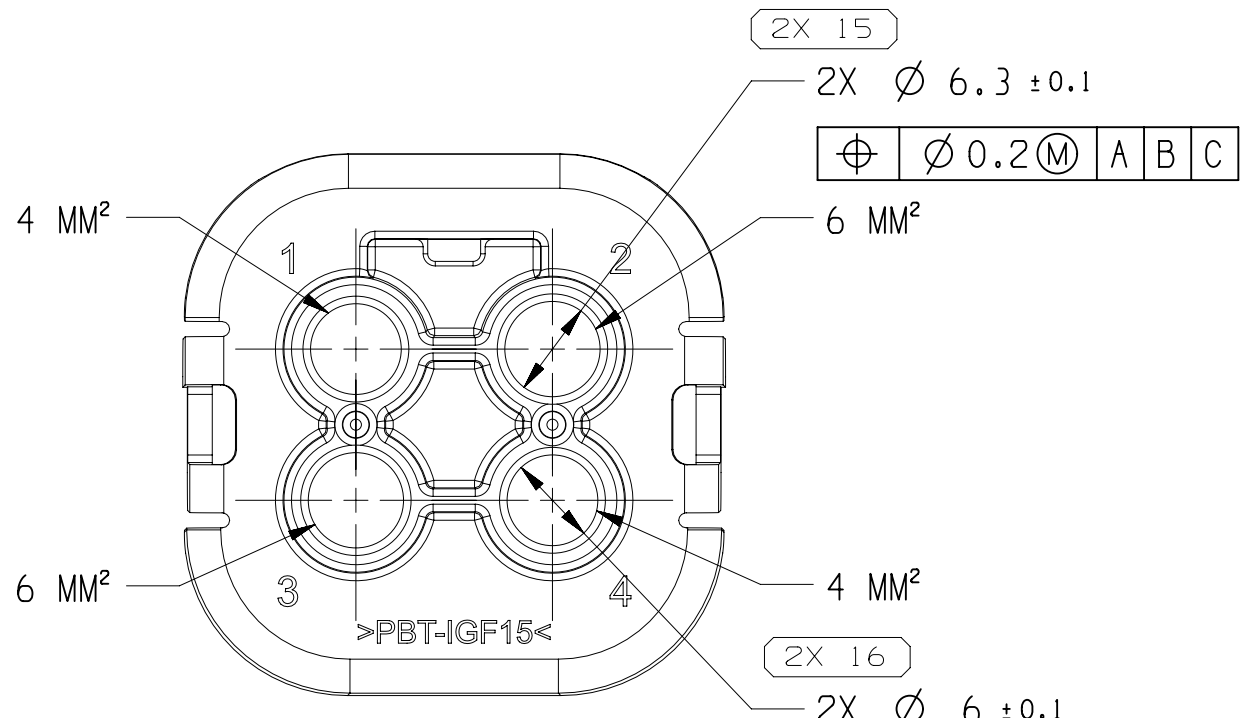
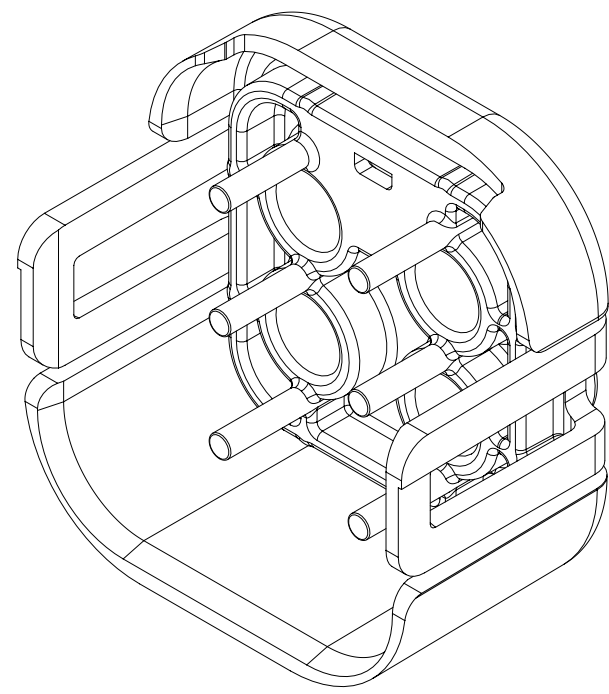
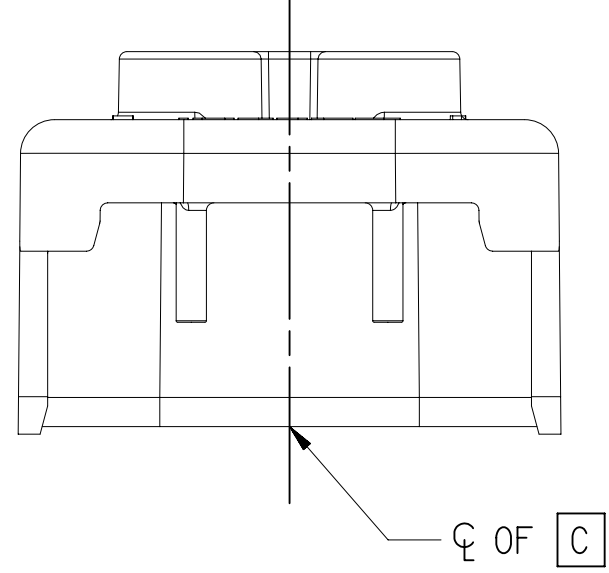
DATE		STG	REV	N/P	CHG	ZONE	REVISION HISTORY		AUTH	DR	APVD	APVD
19JL17		R	01	-	-		ALL PARTS: RELEASED PART DRAWING		436440	ES	ES	TM
07MY18		R	02	-	-		35072738 - ADDED GD&T POSITION CONTROL ON DIM #13; 35072739 - ADDED GD&T POSITION CONTROL ON DIM #11; ALL PARTS - ADDED BASIC DIMS (7 PLCS), 32 WAS 32.4 AND (35.83) WAS 35.7		439754	CGD	CGD	TM
09OC18		R	03	-	-		ALL PARTS - ADDED PACKAGING NOTE AND UPDATED PART AVAILABILITY		441208	LVD	JAA	TM
06MY21		R	04	-	-		35506594 - RELEASED		552986	JGM	JGM	SBA
16AU21		R	05	-	-		35506594 - UPDATED CABLE SEAL ON CHART		554959	GDH	JAA	SBA
24NO22		R	06	-	-		35724336 - RELEASED		559047	AGC	AGC	LAR



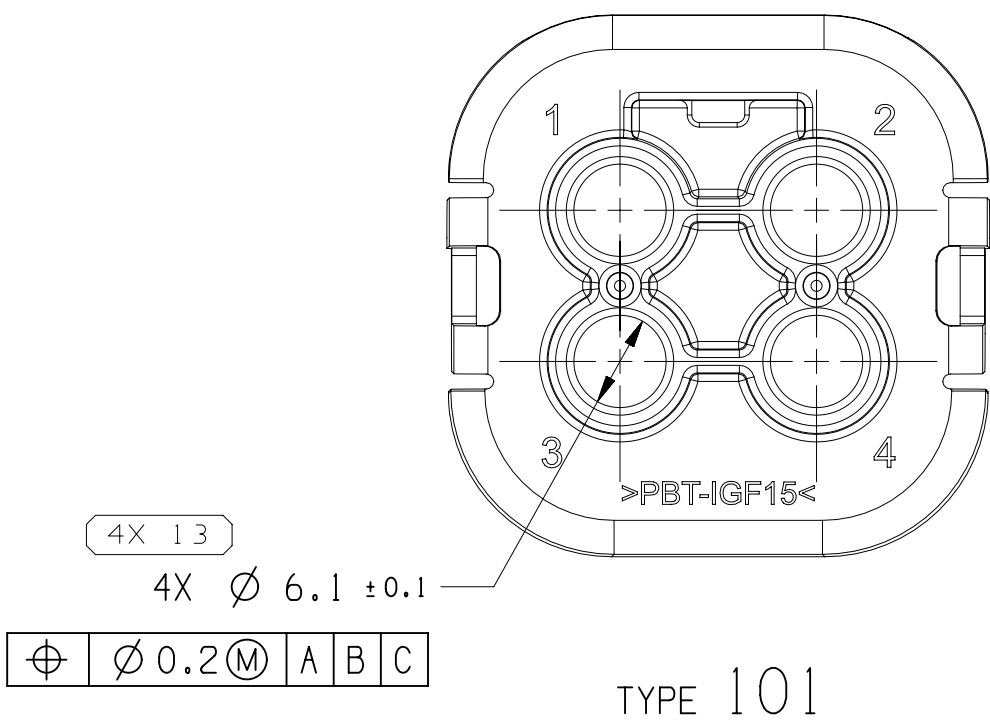
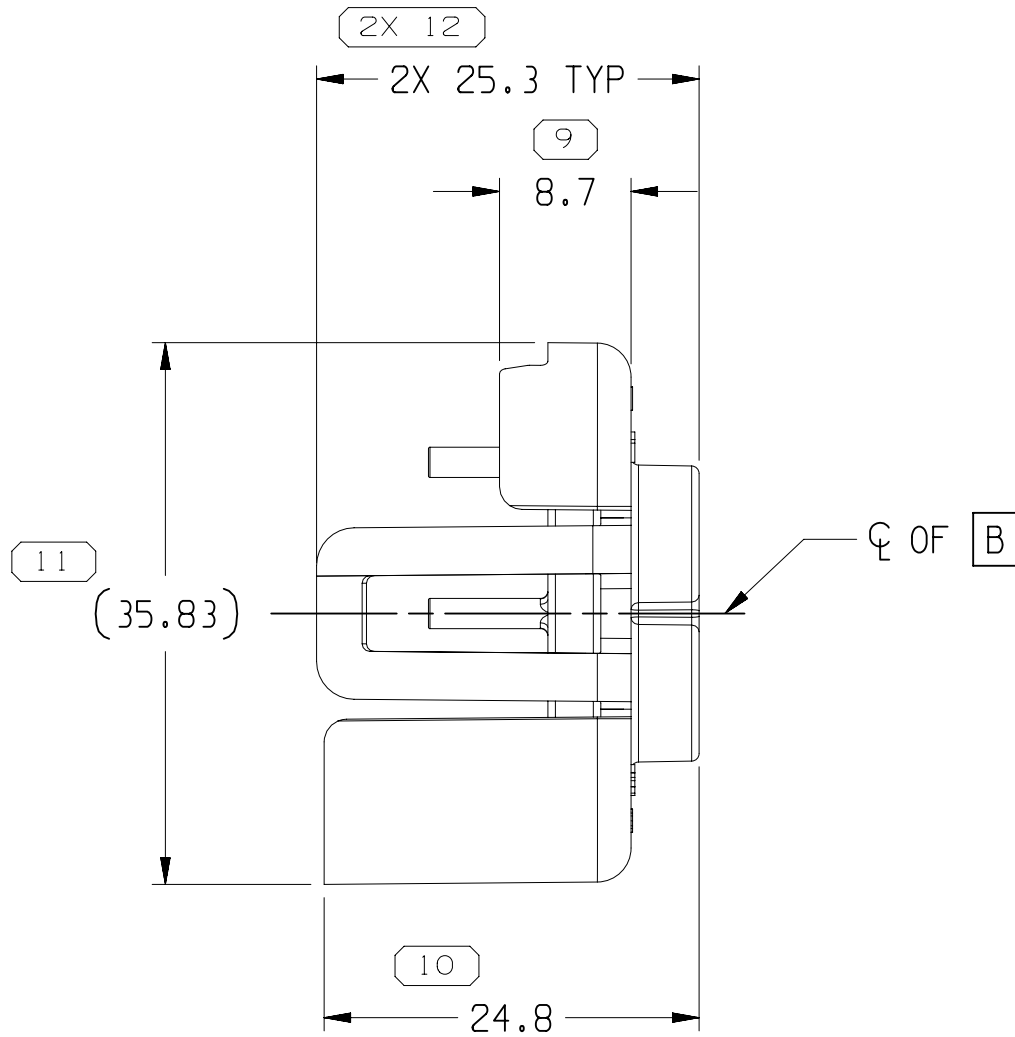
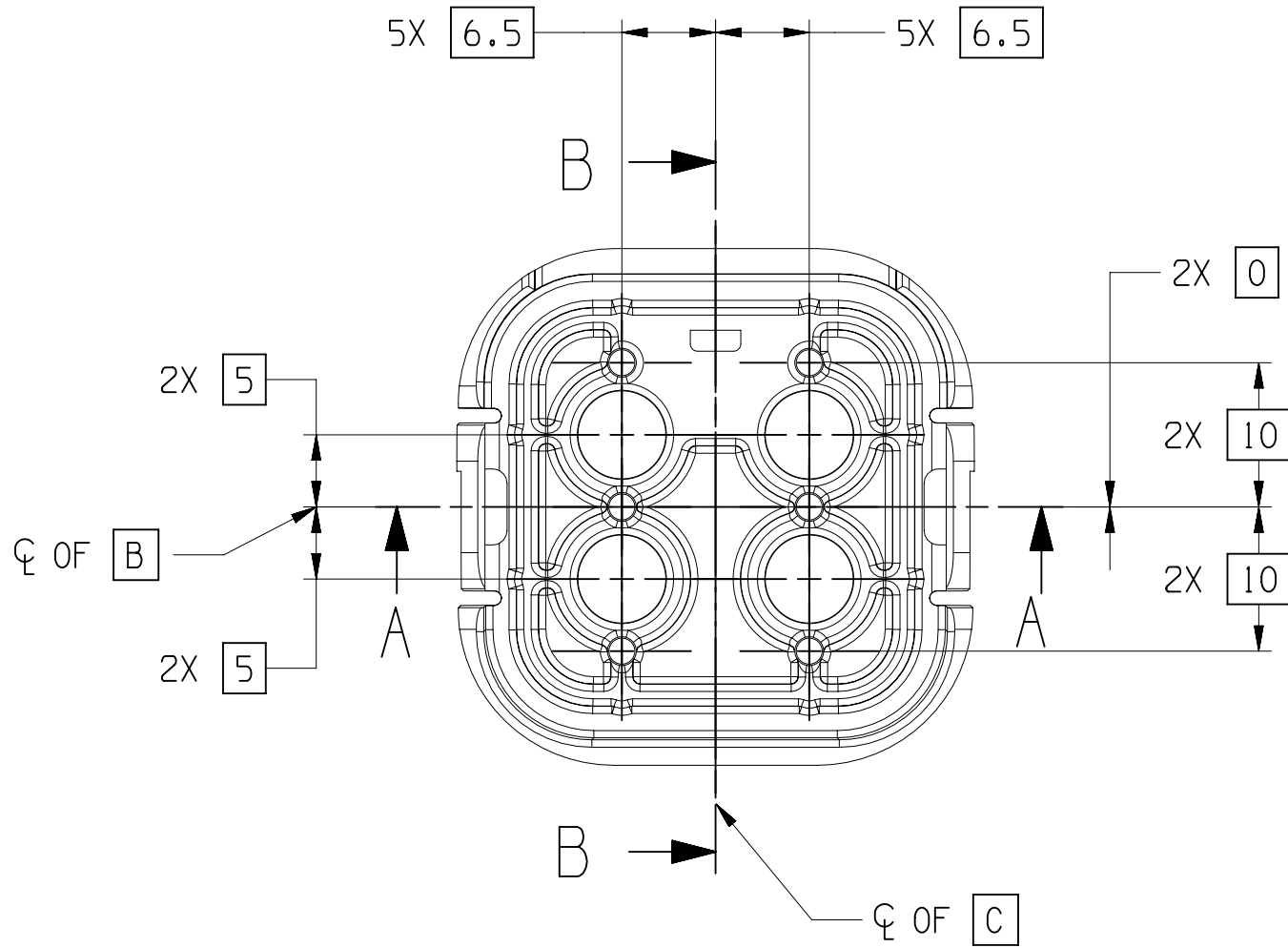
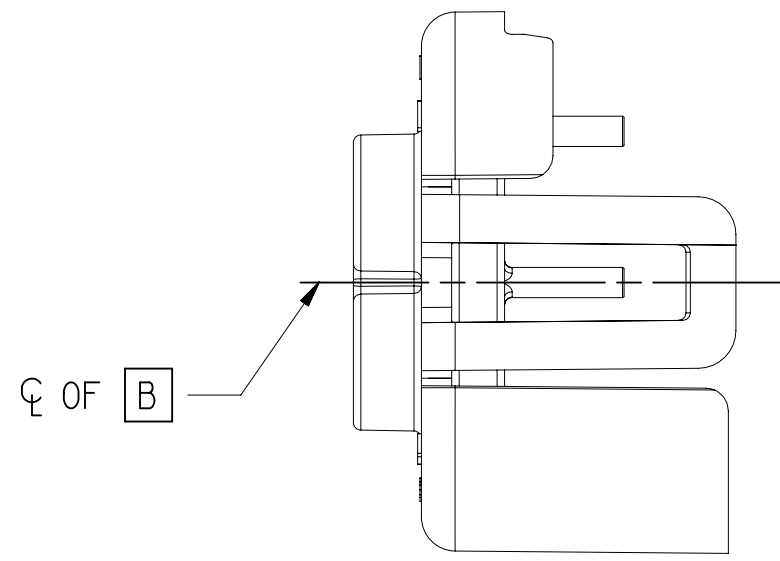
TYPE 102
SAME AS TYPE 101
EXCEPT AS SHOWN



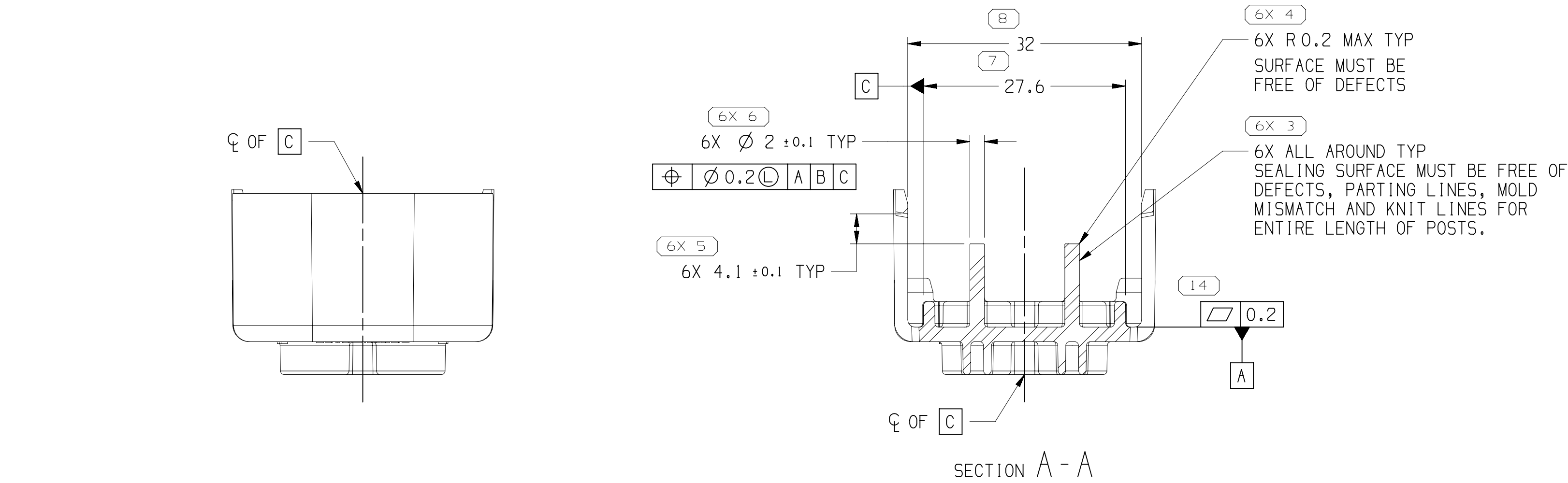
SECTION B - B



TYPE 103
SAME AS TYPE 101
EXCEPT AS SHOWN



TYPE 101



NOTES

- UNLESS OTHERWISE SPECIFIED AND/OR INDICATED:

DIMENSIONS ARE TO FACE OF VIEW SHOWN AND AUTOMATICALLY ROUNDED BY COMPUTER FOR INSPECTION (SEE MATH MODEL FOR PRECISE DIMENSIONS). FOR ALL OTHER DIMENSIONS NOT SHOWN BUT REQUIRED FOR TOOL BUILD, SEE MATH MODEL FOR PRECISE TOOL PATH DATA.

- THIS PRODUCT IS NOT CATEGORIZED AS AN APPEARANCE ITEM, MINOR IMPERFECTIONS INCLUDING, BUT NOT LIMITED TO, FLOW MARKS, COLOR BLEMMISHES, GATE VESTIGE, AND SOFT FLASH THAT DO NOT AFFECT THE FIT, FORM, OR FUNCTION OF THE PART ARE PERMISSIBLE PER EAMP.4-3.CS.01-EN.
- CORPORATE BRAND TO BE APPLIED TO PRODUCT DESIGN PER THE LATEST REVISION OF ESD 51085201.
- PARTS MUST BE PACKAGED IN COMPARTMENTAL CONTAINERS OR TRAYS, ENCLOSED IN CLEAN POLYETHYLENE BAGS.

PART NO	REV	N/P	TYPE	MATERIAL SPECIFICATION AND COLOR	VOLUME (CM ³)	SIZE (MM ²)	O.D.	APPLICABLE CABLE SEAL
35724336	01	-	104	POYESTER COMPOUND RED	5.942	6	5.5 - 6.1	35072735
35506594	01	AA	103	POLYESTER COMPOUND BLACK	6.001	6	5.5 - 6.1	35072735
35072739	02	AA	102	POLYESTER COMPOUND ORANGE	6.239	3	4.3 - 4.7	35072736
35072738	02	AA	101	POLYESTER COMPOUND GREEN	6.022	5	5.5 - 5.9	35072735

DIMENSIONAL RANGE (MM)		CHART	
FROM	TO	20	400
0	20	20	20
20	30	30	30
30	40	40	40
40	50	50	50
50	60	60	60
60	70	70	70
70	80	80	80
80	90	90	90
90	100	100	100
100	150	150	150
150	200	200	200
200	250	250	250
250	300	300	300
300	400	400	400
TOLERANCE (UNLESS OTHERWISE SPECIFIED)		CHART	
[+0.15] [+0.2] [+0.3] [+0.4] [+0.5] [+0.6] [+0.8] [+1] [+1.2]		1	
ANGULAR TOLERANCE		±2°	

A	
INDICATES THAT PHYSICAL PARTS ARE NOT AVAILABLE FOR ORDERING.	
PART NUMBERS THAT DO NOT HAVE A LINE PRESENT INDICATE THAT PHYSICAL PARTS ARE AVAILABLE FOR ORDERING.	
CONTACT APTIV SALES TO ASSURE AVAILABILITY OF PARTS.	
DWS TYPE	
PART DRAWING	
STYLE	
VOLUME (CM ³)	
SEE CHART	
DISTR CODE	
D	
UNLESS OTHERWISE SPECIFIED	
THIS DOCUMENT IS IN ACCORDANCE WITH ASME Y14.5M-1994 AS MODIFIED BY THE 2018 GLOBAL DIMENSIONS AND TOLERANCING ADDENDUM-2018. SEPARATE PATTERNING OF FEATURES MAY BE ISSUED SEPARATELY REGARDLESS OF DATUM REFERENCES.	
ALL DIMENSIONS ARE IN MILLIMETERS	
REFERENCE	
THIRD ANGLE PROJECTION	
DO NOT SCALE	
USE MATH DATA	

• APTIV •	
CONNECTION SYSTEMS	
WARREN, OH	
COPYRIGHT 2017 APTIV. ALL RIGHTS RESERVED.	
THIS DRAWING IS THE PROPERTY OF APTIV AND CONTAINS APTIV CONFIDENTIAL INFORMATION. THE REPRODUCTION, DISTRIBUTION AND UTILIZATION OF THIS DOCUMENT OR ITS RELATED CAD DATA, AS WELL AS COMMUNICATION OF ANY CONTENT TO OTHERS, WITHOUT EXPRESS AUTHORIZATION, IS PROHIBITED.	
DWS TYPE	
PART DRAWING	
STYLE	
VOLUME (CM ³)	
SEE CHART	
DISTR CODE	
D	
UNLESS OTHERWISE SPECIFIED	
THIS DOCUMENT IS IN ACCORDANCE WITH ASME Y14.5M-1994 AS MODIFIED BY THE 2018 GLOBAL DIMENSIONS AND TOLERANCING ADDENDUM-2018. SEPARATE PATTERNING OF FEATURES MAY BE ISSUED SEPARATELY REGARDLESS OF DATUM REFERENCES.	
ALL DIMENSIONS ARE IN MILLIMETERS	
REFERENCE	
THIRD ANGLE PROJECTION	
DO NOT SCALE	
USE MATH DATA	

Mouser Electronics

Authorized Distributor

Click to View Pricing, Inventory, Delivery & Lifecycle Information:

[Aptiv:](#)

[35072739](#)