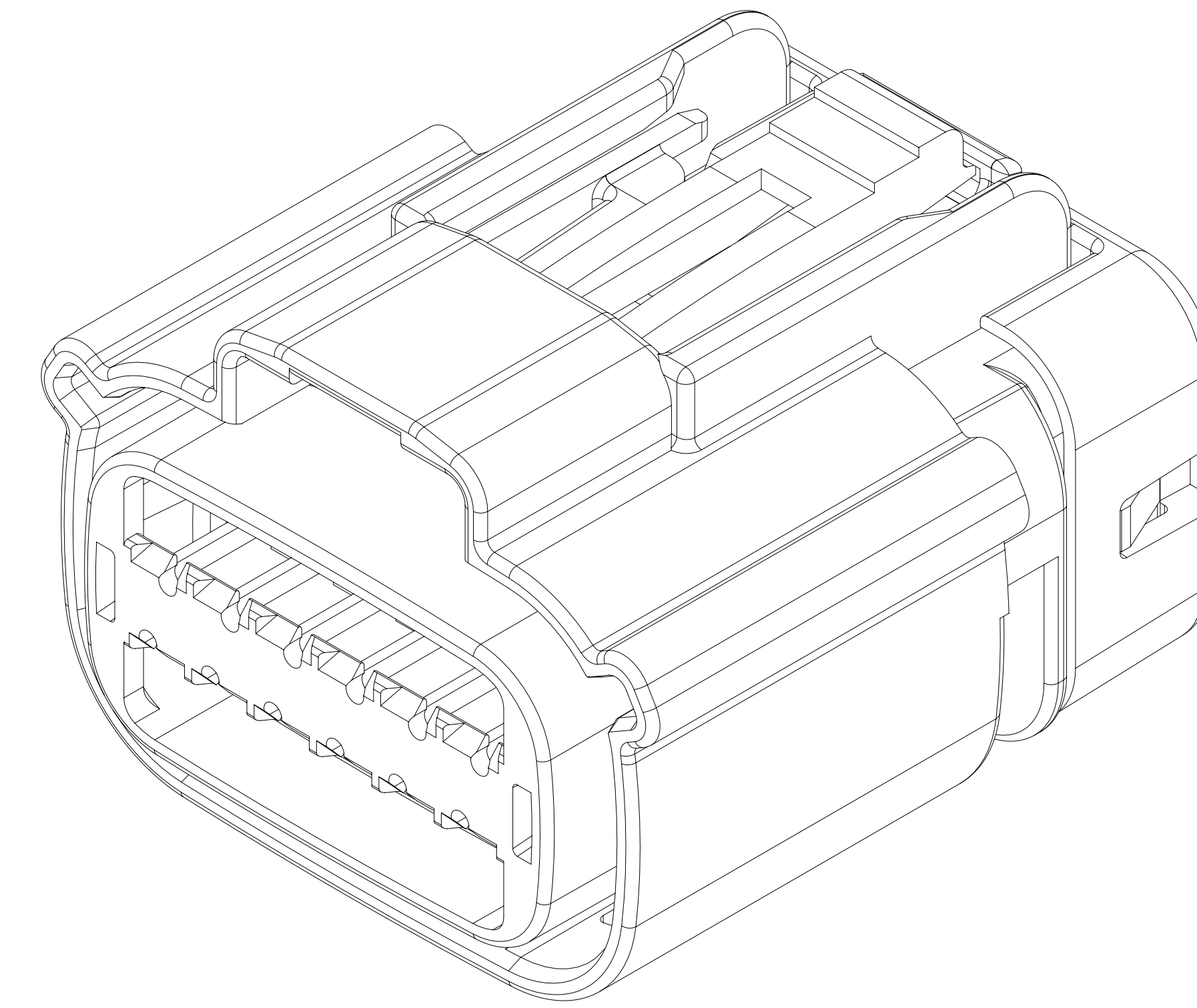
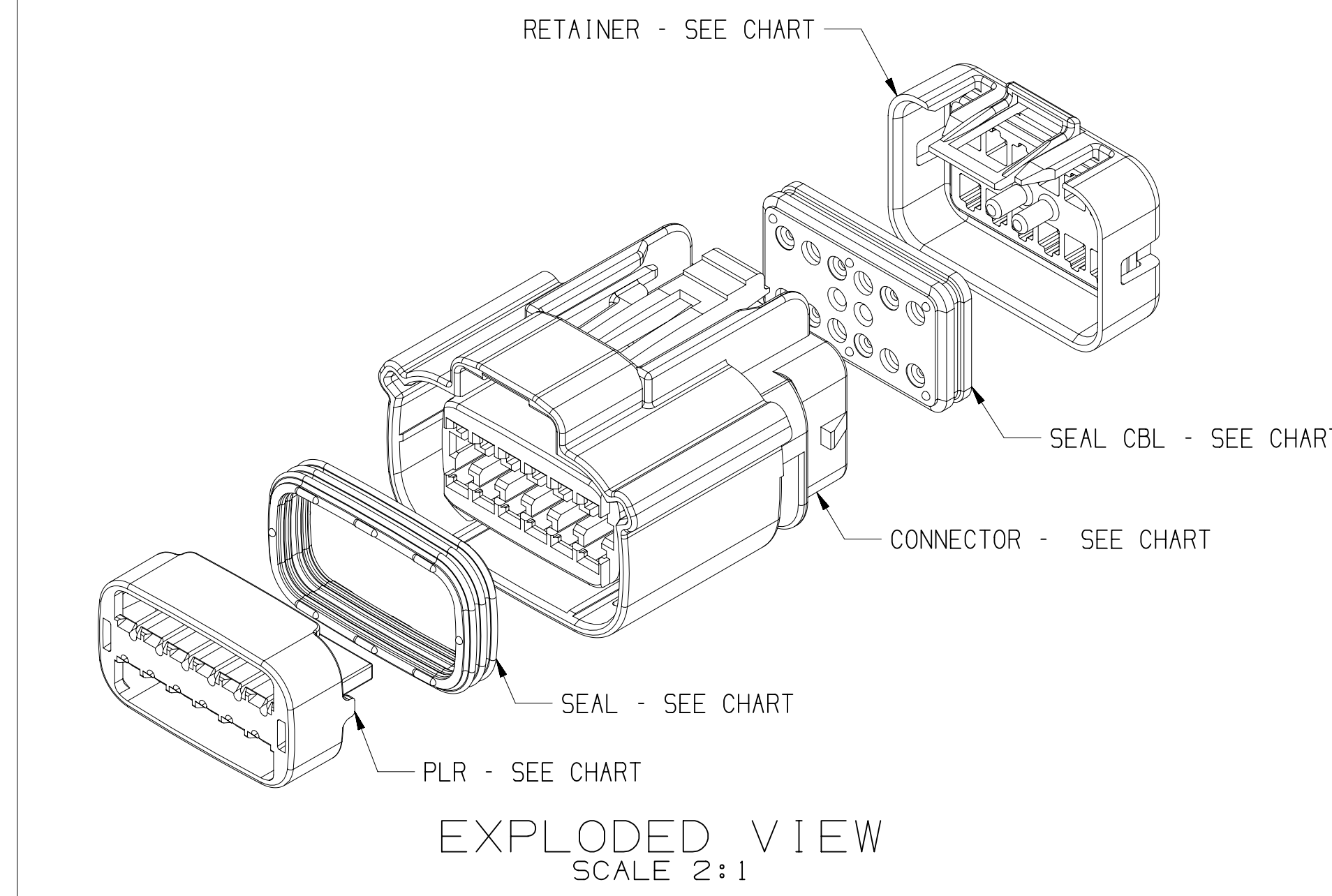


TYPE 102
SAME AS TYPE 101
EXCEPT AS SHOWN

TYPE 105
SAME AS TYPE 101
EXCEPT AS SHOWN

6 (36.8



DWS STATUS					ZONE	REVISION HISTORY	AUTH	DR	APPROVED	DATE
DATE	STO	REV	NUM	CHK						
30MY13	R	01	-	-	ALL PARTS - RELEASED PART DRAWING	422649	AVJ	JTM	AWM	
31AP16	R	03	-	-	ALL PARTS - UPDATED CONN. PLR., SEAL CONN. SEAL & RETAINER TO LATEST REVISION	426269	ABH	DGL	ABH	
05MY16	R	03	-	-	ALL PARTS - CORRECTED CBL SEAL 15521155 INSTEAD OF 15521555	432974	ABH	DGL	ABH	
21JL16	R	04	-	-	ALL PARTS - PSD WAS 10 AND ADDED DIMW10	437374	EVV	EVV	EVV	
26OC16	R	05	-	-	ALL PARTS - RELOCATED DIMW10 AND DIMW10 IS 1.75 +0.15	437427	KYT	DAT	DAT	
21F17	R	06	-	-	15521309 - UPDATED PART AVAILABILITY: ALL PARTS - ADDED ASSEMBLY REQUIREMENT NOTES	435803	NRM	DGL	NRM	
19OC17	R	07	-	-	ALL PARTS - ADDED "SHIT 1 OF 2"	438050	IMF	IMF	IMF	
19JN19	R	08	-	-	ALL PARTS - ADDED "DIFFERENT PUNCH PATTERN CON. DURATIONS" & "ASSEMBLY WITH CPA" NOTES	443337	JLL	DSP	DSP	

TYPE 103
SAME AS TYPE 101
EXCEPT AS SHOWN

TYPE 106
SAME AS TYPE 101
EXCEPT AS SHOWN

TYPE 101

11 (24.9)

- NOTES
1. UNLESS OTHERWISE SPECIFIED AND/OR INDICATED:
 - DIMENSIONS ARE TO FACE OF VIEW SHOWN AND AUTOMATICALLY ROUNDED BY COMPUTER FOR INSPECTION (SEE MATH MODEL FOR PRECISE DIMENSIONS), FOR ALL OTHER DIMENSIONS NOT SHOWN BUT NOT SPECIFIED, THE TOOL BUILD, SEE MATH MODEL FOR PRECISE TOOL PATH DATA.
 2. PART IS MANUFACTURED TO GEOMETRIC TOLERANCES, CENTERLINE DIMENSIONS ARE FOR REFERENCE ONLY.
 3. SEALING CODE 4 - DESIGN WILL MEET REQUIREMENTS OF SAE/USCAR-2 CONNECTOR SYSTEM ENVIRONMENTAL TEST FLOWCHART (PRESSURE,VACUUM AND SUBMERSION).
 4. THIS PRODUCT IS NOT CATEGORIZED AS AN APPEARANCE ITEM, MINOR IMPERFECTIONS INCLUDING, BUT NOT LIMITED TO, FLOW MARKS, COLOR BLEMSHES, DATE VESTIGES, AND SCOT FLASH THAT DO NOT AFFECT THE FIT, FORM, OR FUNCTION OF THE PART ARE PERMISSIBLE PER EAP-4-1.CS.01-EN
 5. FOR APPLICATION DATA SEE THE INDIVIDUAL APPLICATION DRAWINGS.
 6. ASSEMBLY TO BE USED WITH APPROPRIATE ACTIV HOLDER DESIGN.
 7. ASSEMBLY TO BE PROCESSED USING ACTIV CONNECTOR SYSTEMS BEST PRACTICE METHODS AND/OR CONNECTOR ASSEMBLY INSTRUCTIONS AND APPLICABLE REPAIR PROCEDURES.
 8. BEFORE TERMINAL ASSEMBLY: VERIFY THAT PLR IS IN THE PRE-STAGE POSITION ON THE CONNECTOR, IF NOT: RETURN PLR TO PRE-STAGE POSITION.
 9. FOR DIFFERENT PUNCH PATTERNS (IF AVAILABLE) SEE SHEET 2
 10. FOR ASSEMBLIES WITH CPA SEE DRAWING 15514632

155321.43	03	AC	106	15514618	15514640	13968655	15521155	15514637	F
155321.42	03	AC	105	15514615	15514640	13968655	15521155	15514637	E
155321.41	03	AC	104	15514613	15514640	13968655	15521155	15514637	D
155321.40	03	AC	103	15514610	15514640	13968655	15521155	15514637	C
155321.39	03	AC	102	15514608	15514640	13968655	15521155	15514637	B
155321.38	03	AC	101	15514606	15514640	13968655	15521155	15514637	A
PART NO	REV	N/P	TYPE	CONNECTOR	PLR	SEAL CONN	SEAL CBL	RETAINER	USCAR

DIMENSIONAL RANGE (MM)		CHART	
FROM	TO		
> 0	> 20	> 30	> 100
> 20	> 30	> 100	> 150
> 30	> 100	> 150	> 200
> 100	> 150	> 200	> 250
> 150	> 200	> 250	> 300
> 200	> 250	> 300	> 400

TOLERANCE UNLESS OTHERWISE SPECIFIED

±0.15	±0.2	±0.3	±0.4	±0.5	±0.6	±0.8	±1	±1.6
-------	------	------	------	------	------	------	----	------

ANGULAR TOLERANCE ±2°

[illegible]

Mouser Electronics

Authorized Distributor

Click to View Pricing, Inventory, Delivery & Lifecycle Information:

[Aptiv:](#)
[15532138](#)