

# SHIELDPACK™

## HV RCS890 SB RV 2 WAY



ShieldPack™ HV RCS890 SB RV  
2W 90°

### BENEFITS

- Ultra compact design for applications with space constraints
- Panel mount to device with face seal to module
- Header is sealed in both mated and unmated position

### FEATURES

- Two-stage disconnect for safe unmating
- Easier mating with Slider Mating Assist System on harness connector
- Bundle shielding with external braid
- HVIL shunted in harness connector



### AVAILABLE CONFIGURATIONS

Connector Type	Wire-to-device
Cable Exit Orientation	90°
Cable Range (mm²)	16 - 70 (power) 0.35 - 1.0 (HVIL)
Terminal Type	8 mm round contact system
# of Power Terminals	2
Shielding	Bundle
HVIL	Shunt on female
Assembly Assurance	CPA
Number of Indexes	2



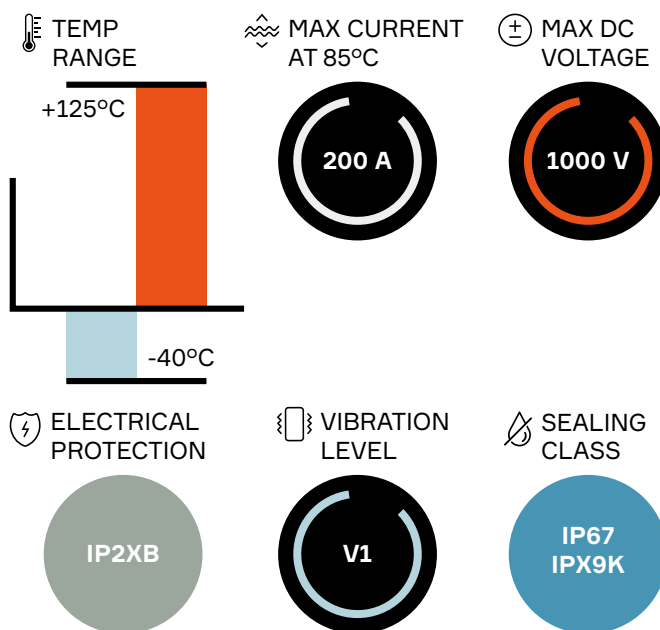
### APPLICATIONS

AC / DC inverter, DC / DC converter, HV battery,  
Power electric box, HV PDU

See back page for representative part numbers and packaging dimensions.



### TECHNICAL CHARACTERISTICS



### About Aptiv

Aptiv is a global technology company that develops safer, greener and more connected solutions enabling the future of mobility.

Visit [aptiv.com](https://aptiv.com)



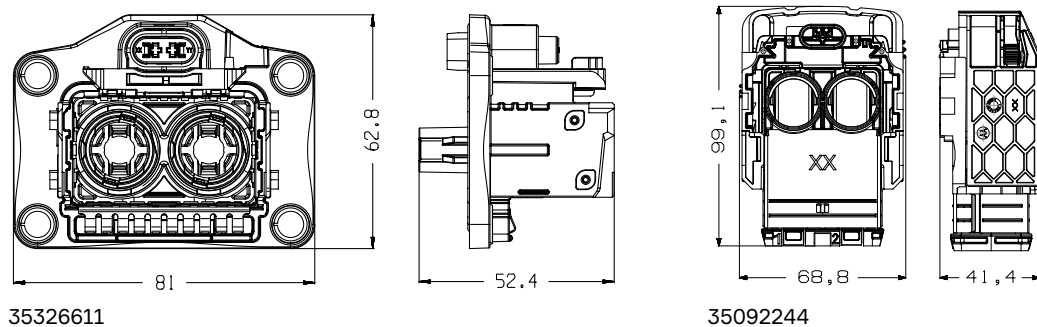
• **APTIV** •

Index	Header connector	Mating connector	BOM
1	35326611	35092244	1
2	35326613	35092239	

## ASSOCIATED PARTS

Part number	Description	BOM
<b>Header</b>		
10811962	DCS2 1.5 female terminal gold-plated 0.5 - 1.0 mm <sup>2</sup>	2
15441379	DCS/DSQ 1.5 red single wire seal 0.35 - 0.5 mm <sup>2</sup>	2
15441380	DCS/DSQ 1.5 grey single wire seal 0.75 - 1.0 mm <sup>2</sup>	
35304635	RCS 800 male bus bar terminal silver version polarized pin	2
<b>Mating Connector</b>		
33308229	RCS 890 female terminal silver version 16 - 25 mm <sup>2</sup>	2
33502217	RCS 890 female terminal silver version 35 - 50 mm <sup>2</sup>	
35225104	RCS 890 female terminal silver version 70 mm <sup>2</sup>	
33521619	RCS 890 single wire seal & retainer (plug) 16 - 25 mm <sup>2</sup>	2
33511753	RCS 890 2-way female single wire seal & retainer (plug) 35 - 40 mm <sup>2</sup>	
33511754	RCS 890 2-way female single wire seal & retainer (plug) 50 mm <sup>2</sup>	
35199856	RCS 890 2-way female single wire seal & retainer (plug) 70 mm <sup>2</sup>	
35091447	RCS 890 2-way half clamp	2

## DIMENSION MEASUREMENT SAMPLE



Part numbers, specifications, dimensions and performance data in this document are for general references only and are subject to change without notice. To verify product information, please contact an Aptiv representative.

# Mouser Electronics

Authorized Distributor

Click to View Pricing, Inventory, Delivery & Lifecycle Information:

[Aptiv:](#)

[35326611](#) [35092244](#)