

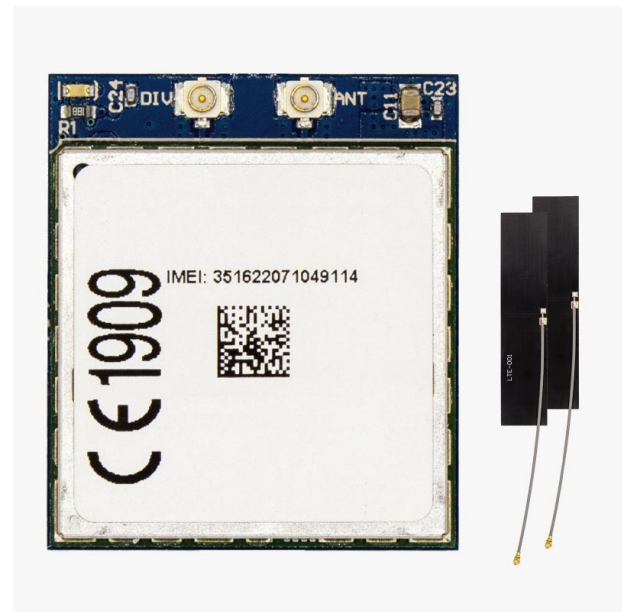
# 4G NTRIP Master

Includes:

- 4G+3G+2G radio module including NTRIP software (XBee socket compatible)
- 2 4G+3G+2G antennas with integrated cable



More info about the product!



4G NTRIP Master has several different configurations to provide you with flexibility:

SKU	Variation Name
AS-XBEE-4G-EU-UFL-00	Europe
AS-XBEE-4G-NA-UFL-00	North America

Get a discounted bulk price on this product for orders of 50 units or more. Contact us at [info@ardusimple.com](mailto:info@ardusimple.com) to get a quote.

## Description

The ArduSimple 4G NTRIP Master enables your RTK receiver to connect autonomously to internet, from any area with cellphone coverage, and by using a SIM card. No programming is required to use this product.

You can use this product as:

- NTRIP Client (to get corrections from your preferred correction service)
- NTRIP Server (to send your base corrections to a NTRIP caster like RTK2go.com)
- TCP socket client (to send position or any other message to your server)
- PointPerfect Client

Just introduce your SIM card, configure the device following our [User Guide](#), and let the 4G NTRIP Master do the rest. If you find the hookup guide too complex just add to the shopping cart our [Configuration Service](#) if you want to receive it already pre-configured.

Good to know:

- Default configuration is at 115'200bps
- Compatible with simpleRTK2B Pro, simpleRTK3B and simpleRTK2B SBC.
- Compatible with u-blox Thingstream PointPerfect augmentation service.
- If you want to use it with simpleRTK2B Budget, you will need a [Shield for Second XBee socket \(High Power\)](#).
- This product is not compatible with simpleRTK2B Lite
- You will need a SIM card with internet access capabilities to use this product. MicroSIM form factor.

## Specifications

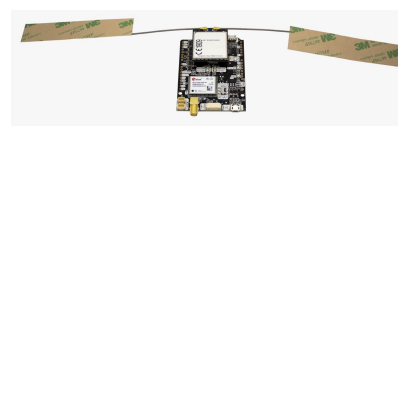
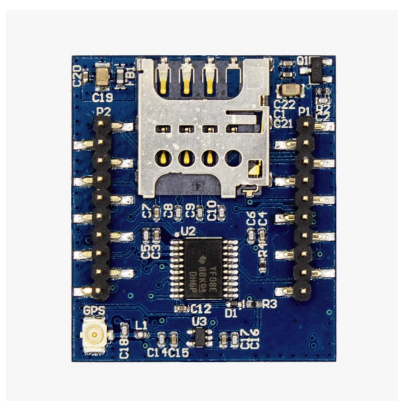
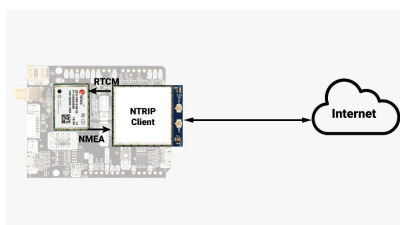
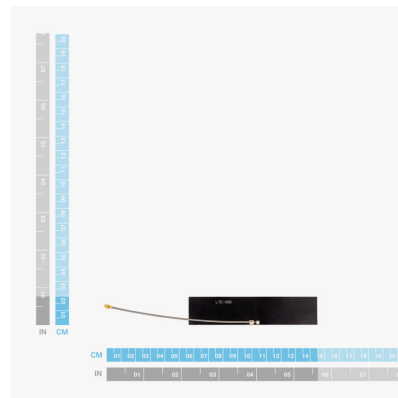
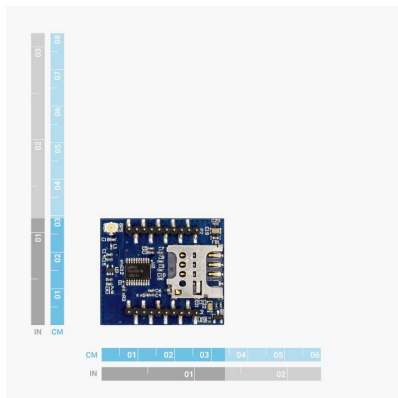
### Interfaces

- UART
- RS232 ([requires accessory](#))

### 4G NTRIP Master features

- LTE FDD Cat.4 with dual antenna for Rx Diversity and MIMO
- Compatible with 2G, 3G and 4G networks
- Integrated SIM holder: MicroSIM
- Antenna type: external passive
- Antenna connector (modem side): uFL / IPEX
- Frequency (Europe variant):
  - For Europe, but also Middle East & Asia, compatible with:
  - 4G Bands (MHz): B1(2100), B3(1800), B7(2600), B8(900), B20(800)
  - 3G Bands (MHz): B2(2100), B8(900)
  - 2G Bands (MHz): B3(1800), B8(900)
- Frequency (North America variant):
  - For USA\* & Canada, compatible with 4G and 3G networks.
  - 4G Bands (MHz): B2(1900), B4(1700), B5(850), B12/B13 (700)
  - 3G Bands (MHz): B2(1900), B5(850)
  - \* Only compatible with AT&T, T-Mobile and virtual operators working on these networks. Not compatible by default with Verizon SIM cards, contact us in this case.
- Operating temperature Range: -40 to +85degC
- Documentation: RED, RoHS, FCC, IC, PTCRB

## Image Gallery



## Pinout

TOP VIEW

Description	Name	#	#	Name	Description
3.3-3.6V with up to 2A peak	VCC	1	20	ON/OFF	Connect to GND for always ON
Data out VCC level	TX	2	19		
Data in VCC level	RX	3	18		
Must connect to GND	GND	4	17		
Leave open for always ON	RESET	5	16	RTS	Feature disabled
5V to enable USB	V_USB	6	15	GND	Must connect to GND
	USB+	7	14	VREF	Must connect to VCC
	USB-	8	13	LED	1.8V output same as onboard LED
Feature disabled	DTR	9	12	CTS	Feature disabled
Must connect to GND	GND	10	11	GND	Must connect to GND



## Documentation

User Guide	<a href="https://www.ardusimple.com/4g-ntrip-client-hookup-guide/">https://www.ardusimple.com/4g-ntrip-client-hookup-guide/</a>
PCB Integration Guide	<a href="https://www.ardusimple.com/pcb-integration-guides/">https://www.ardusimple.com/pcb-integration-guides/</a>
Footprint	<a href="https://www.snapeda.com/search/?q=ardusimple">https://www.snapeda.com/search/?q=ardusimple</a>
Download CAD models	<a href="https://www.ardusimple.com/wp-content/uploads/3D_CAD/AS-XBEE-4G-EU-UFL-00-R01.STEP">https://www.ardusimple.com/wp-content/uploads/3D_CAD/AS-XBEE-4G-EU-UFL-00-R01.STEP</a> <a href="https://www.ardusimple.com/wp-content/uploads/3D_CAD/AS-XBEE-4G-EU-UFL-00-R01.STEP">https://www.ardusimple.com/wp-content/uploads/3D_CAD/AS-XBEE-4G-EU-UFL-00-R01.STEP</a>

4G NTRIP Master includes free basic technical support. Contact [info@ardusimple.com](mailto:info@ardusimple.com) for more information.

Data and descriptions in this document are subject to change without notice. Product photos and pictures are for illustration purposes only and may differ from the real product appearance.

# Mouser Electronics

Authorized Distributor

Click to View Pricing, Inventory, Delivery & Lifecycle Information:

[ArduSimple:](#)

[AS-XBEE-4G-NA-UFL-00](#) [AS-XBEE-4G-EU-UFL-00](#)